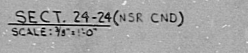
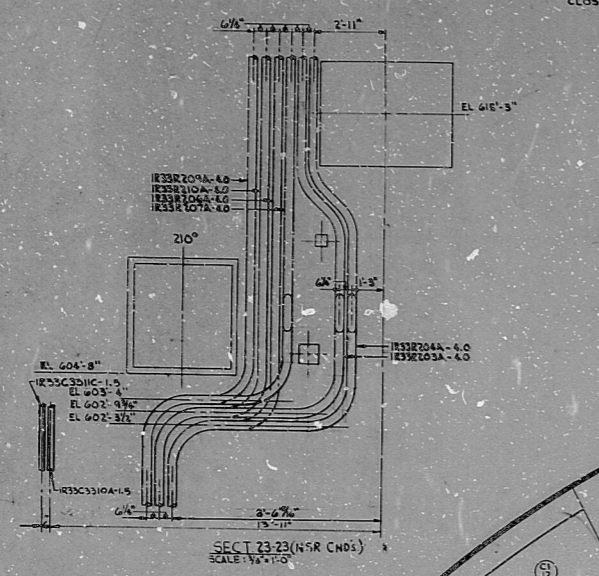
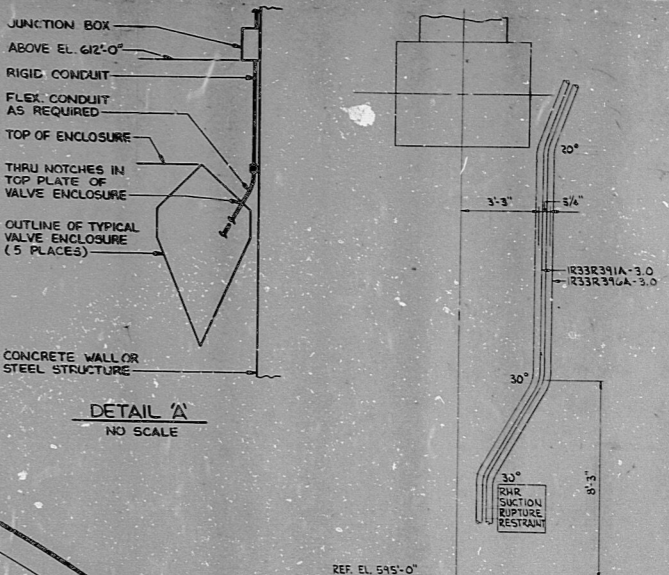


○ TYPICAL CONDUIT INSTALLATION FOR VALVE SOLENOID & LIMIT SWITCHES.

○ SOLENOID  
○ OPEN LIMIT SW.  
○ CLOSED LIMIT SW.

CONDUIT - 75 (UNLESS OTHERWISE NOTED ON CHART)

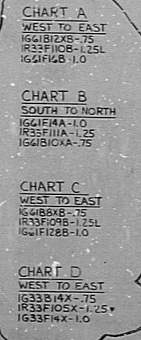
VALVE MPL No.	BOX No.	SOLENOID No. CNG. No.	LIMIT SWITCH No. CND. No. (OPEN) COND. No. (CLOSE)
IC41-FOOB	1B-1-2527		IC41-FOOB IC41C9A



MATCH LINE SEE DWG. D-215-424

MATCH LINE SEE DWG. D-215-222

REVISIONS	DATE	BY	DESCRIPTION
1			REVISED AS INDICATED
2			REVISED AS PER EON #4214-28-106 AT COORDS. E3, F4, G3, G4 (AS INDICATED) 3 PLACES
3			ADDED DETAIL 'A' REMOVED HOLD & REVISED AS INDICATED 2 PLACES
4			REVISED AS INDICATED 4 PLACES
5			REVISED AS INDICATED 2 PLACES
6			REVISED AS INDICATED 10 PLACES
7			REVISED AS INDICATED 2 PLACES
8			REVISED AS INDICATED 1 PLACE
9			REVISED AS INDICATED 4 PLACES
10			REVISED AS INDICATED 4 PLACES
11			REVISED AS INDICATED 4 PLACES



- NOTES:
1. FOR LEGEND, NOTES, REFERENCES, AND STANDARD DETAILS, SEE DWG. D-215-301.
  2. CONDUITS CONTINUED UP, SEE DWG. D-215-312.
  3. CONDUITS CONTINUED DOWN, SEE DWG. D-215-312.
  4. THIS DRAWING TO BE WORKED IN CONJUNCTION WITH THE FOLLOWING SUPPORT DRAWINGS:
    - SS-215-322, SHEET C5
    - SS-215-322, SHEET C6
    - SS-215-322, SHEET C7
    - SS-215-322, SHEET C8
    - SS-215-322, SHEET C9
    - SS-215-322, SHEET C10
    - SS-215-322, SHEET C11
    - SS-215-322, SHEET C12
    - SS-215-322, SHEET C13
    - SS-215-322, SHEET C14
    - SS-215-322, SHEET C15
  5. ALL CONDUIT ENTERING PULL, SPLICE, TERMINAL, AND JUNCTION BOXES OUTSIDE DRYWELL ON THIS DRAWING TO HAVE SEALING GASKETS INSTALLED TO PREVENT WATER ENTRY DURING POOL SWELL.

NUCLEAR SAFETY RELATED

CONSTRUCTION	2-33	1/1
LIMITED CONSTRUCTION: AS NOTED		
PRELIMINARY NOT FOR CONSTRUCTION		
BIDDING PURPOSES		
DATE	RELEASED FOR	ENGR.
THE CLEVELAND ELECTRIC ILLUMINATING COMPANY		
PERRY NUCLEAR POWER PLANT UNIT 1		
ELECTRICAL		
CONDUIT LAYOUT		
REACTOR BUILDING - WEST - EL. 699'-0"		
GILBERT ASSOCIATES, INC.		
ENGINEERS AND CONSULTANTS		
DESIGNED	BY	DATE
CHECKED	BY	DATE
APPROVED	BY	DATE
SCALE	1/8" = 1'-0"	
NO.	04 4549	D-215-322 L
DATE	11-11-59	DRAWING NUMBER
REV		

POOR ORIGINAL

CND LYTRZB WEST EL 599-9

RIDS

8112030428

