

14 13 12 11 10 9 8 7 6 5 4 3 2 1

CHART B

FORM DET. LOC. OR CR.	CKT. NO. POSITION A	CKT. NO. POSITION B	CKT. NO. POSITION C	CKT. NO. POSITION D
08-17	IC5IR795D	IC5IR639B	IC5IR827D	IC5IR876B
08-25	IC5IR543A	IC5IR729C	IC5IR873A	IC5IR789C
08-33	IC5IR781D	IC5IR645B	IC5IR833D	IC5IR755B
08-41	IC5IR827A	IC5IR715C	IC5IR881A	IC5IR707C
08-49	IC5IR181D	IC5IR631B	IC5IR818D	IC5IR850D
16-09	IC5IR618B	IC5IR807C	IC5IR827B	IC5IR671B
16-17	IC5IR699C	IC5IR523A	IC5IR749C	IC5IR597A
16-25	IC5IR625B	IC5IR810C	IC5IR653B	IC5IR841D
16-33	IC5IR705C	IC5IR851A	IC5IR757C	IC5IR603A
16-41	IC5IR635B	IC5IR801D	IC5IR661B	IC5IR849D
16-49	IC5IR630C	IC5IR831A	IC5IR783C	IC5IR811A
24-09	IC5IR527A	IC5IR733C	IC5IR577A	IC5IR703C
24-17	IC5IR785D	IC5IR649B	IC5IR837D	IC5IR617B
24-25	IC5IR631A	IC5IR717C	IC5IR685A	IC5IR717C
24-33	IC5IR791C	IC5IR635B	IC5IR823D	IC5IR685B
24-41	IC5IR539A	IC5IR725C	IC5IR831D	IC5IR807C
24-49	IC5IR717C	IC5IR625B	IC5IR810C	IC5IR759C
24-57	IC5IR826A	IC5IR717C	IC5IR879A	IC5IR759C
32-09	IC5IR629B	IC5IR817D	IC5IR657B	IC5IR845D
32-17	IC5IR709C	IC5IR552A	IC5IR741C	IC5IR677A
32-25	IC5IR617C	IC5IR805D	IC5IR665B	IC5IR883D
32-33	IC5IR631C	IC5IR829A	IC5IR747C	IC5IR875A
32-41	IC5IR625B	IC5IR810C	IC5IR651B	IC5IR837D
32-49	IC5IR703C	IC5IR849A	IC5IR759C	IC5IR607A
32-57	IC5IR618B	IC5IR791D	IC5IR659B	IC5IR847D
40-07	IC5IR825A	IC5IR721C	IC5IR589A	IC5IR877C
40-15	IC5IR810C	IC5IR829A	IC5IR747C	IC5IR883D
40-23	IC5IR845A	IC5IR717C	IC5IR831A	IC5IR875A
40-31	IC5IR789D	IC5IR647B	IC5IR835D	IC5IR807B
40-39	IC5IR829A	IC5IR715C	IC5IR833A	IC5IR709C
40-47	IC5IR789D	IC5IR635B	IC5IR821D	IC5IR891B
40-55	IC5IR537A	IC5IR733C	IC5IR807A	IC5IR753C
40-63	IC5IR701C	IC5IR825A	IC5IR647B	IC5IR887D
40-71	IC5IR621B	IC5IR818D	IC5IR655B	IC5IR843D
40-79	IC5IR701C	IC5IR859A	IC5IR789C	IC5IR605A
40-87	IC5IR618B	IC5IR805D	IC5IR665B	IC5IR881D
40-95	IC5IR699C	IC5IR807A	IC5IR745C	IC5IR893A
40-103	IC5IR539A	IC5IR717C	IC5IR831A	IC5IR713C
40-111	IC5IR795D	IC5IR625B	IC5IR823D	IC5IR685B
40-119	IC5IR647A	IC5IR727C	IC5IR871A	IC5IR787C

FOR TYPICAL CONDUIT CONNECTION: SEE SECTION 11-11

CHART C

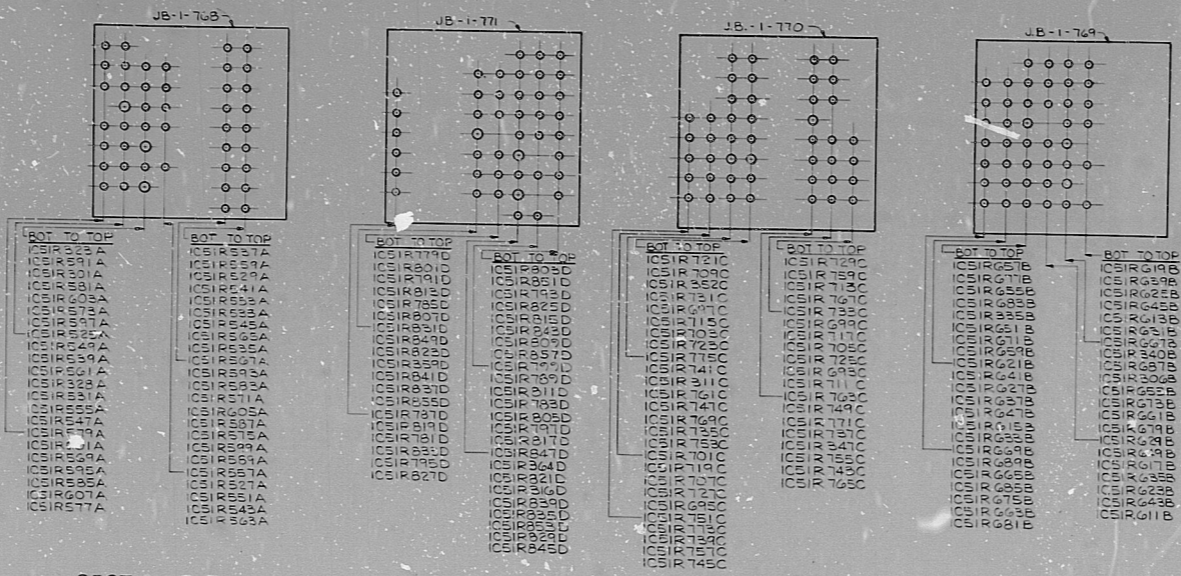
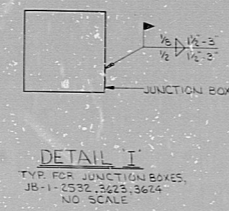
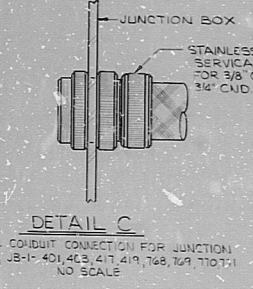
FORM DET. LOC. OR CR.	CIRCUIT NUMBER
16-15	IC5IR335B
16-23	IC5IR222A
24-29	IC5IR359D
24-37	IC5IR347C
32-29	IC5IR328A
32-37	IC5IR305C
40-13	IC5IR350C
40-21	IC5IR362D

FOR TYPICAL CONDUIT CONNECTION: SEE SECTION 10-10

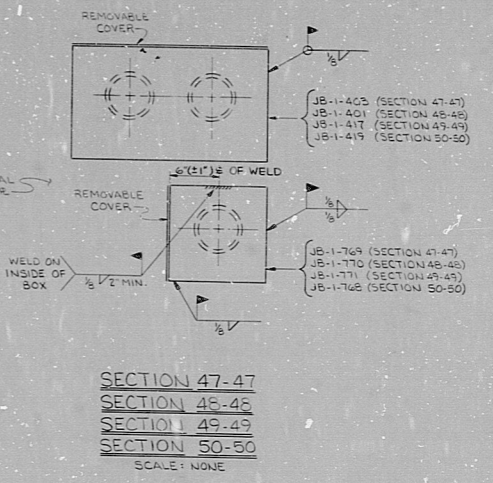
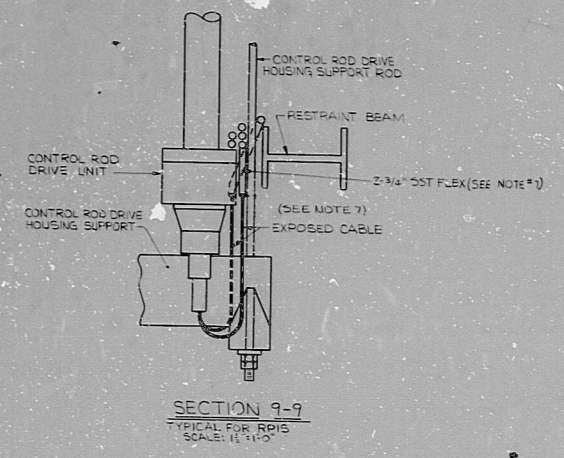
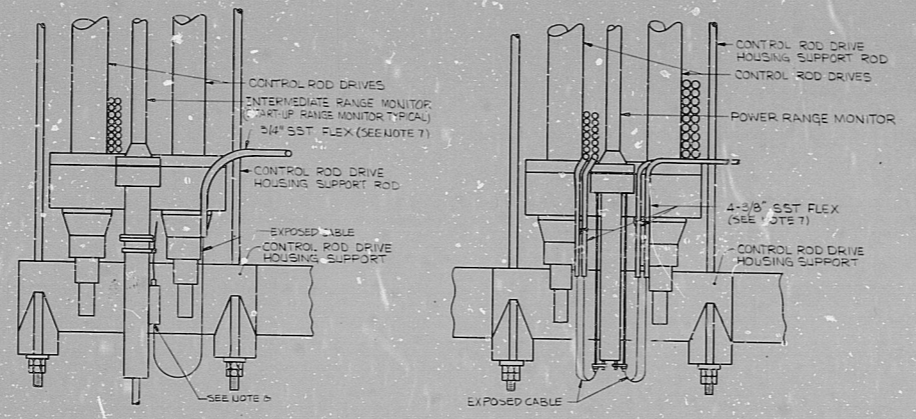
CHART D

FORM DET. LOC. OR CR.	CIRCUIT NUMBER
12-21	IC5IR302B
16-45	IC5IR301A
40-21	IC5IR311C
40-45	IC5IR316D

FOR TYPICAL CONDUIT CONNECTION: SEE SECTION 10-10



SECTION 5-5 TYPICAL FOR IRMS/IRMS SCALE: 1/4"=1'-0"
SECTION 6-6 TYPICAL FOR IRMS/IRMS SCALE: 1/4"=1'-0"
SECTION 7-7 TYPICAL FOR IRMS/IRMS SCALE: 1/4"=1'-0"
SECTION 8-8 TYPICAL FOR IRMS/IRMS SCALE: 1/4"=1'-0"



NOTES: 1. FOR NOTES AND REFERENCES, SEE DRAWING D-215-313.

NUCLEAR SAFETY RELATED

REVISIONS

NO.	DATE	ISSUE	CHG.	APPROVALS

TERA APERTURE CARD

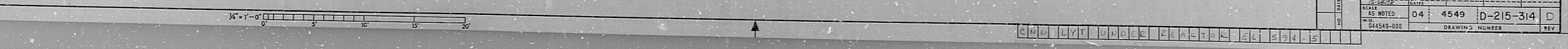
CONSTRUCTION: LIMITED CONSTRUCTION: AS NOTED
 PRELIMINARY: NOT FOR CONSTRUCTION BIDDING PURPOSES

DATE: _____ RELEASED FOR: _____ ENGR: _____

THE CLEVELAND ELECTRIC ILLUMINATING COMPANY
 PERRY NUCLEAR POWER PLANT UNIT 1

ELECTRICAL
 CONDUIT LAYOUT - UNDER REACTOR
 PRESSURE VESSEL EL. 694'-5-3/16" - SECTIONS AND DETAILS

DESIGNED BY: _____ CHECKED BY: _____
 DRAWING NO. 04 4549 D-215-314 D
 SCALE: AS NOTED
 REV: _____



RIDS

8112030425

