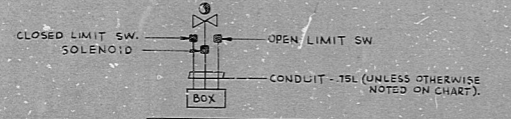
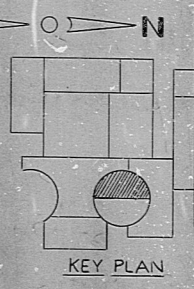
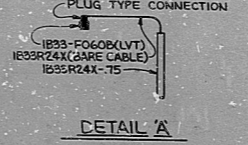
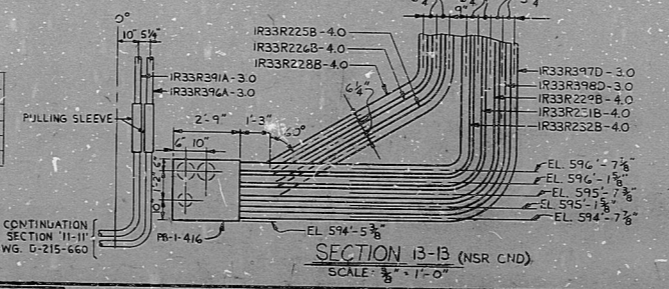


TYPICAL CONDUIT INSTALLATION FOR VALVE SOLENOID & LIMIT SWITCHES



VALVE MPL N°	BOX N°	SOLENOID N°	LIMIT SWITCH N°
		CND. N°	CND. N° (OPEN) CND. N° (CLOSE)
IP43-FU75	JB-1-WIT	IP43-FD26	IP43-NO16
		IP43-C40X	IP43-C40X



NUCLEAR SAFETY RELATED

REVISIONS	
32/1/78	CONSTRUCTION 2-2-78
	LIMITED CONSTRUCTION: AS NOTED
	PRELIMINARY NOT FOR CONSTRUCTION
	BIDDING PURPOSES
DATE	RELEASED FOR ENGR.
THE CLEVELAND ELECTRIC ILLUMINATING COMPANY	
PERRY NUCLEAR POWER PLANT UNIT 1	
ELECTRICAL	
CONDUIT LAYOUT	
REACTOR BUILDING - WEST - EL. 574'-10"	
DRAWING NO.	GILBERT ASSOCIATES, INC.
DATE	ENGINEERS AND CONSULTANTS
SCALE	
PROJECT NO.	04 4549 D-215-312 N
DRAWING NUMBER	REV

REVISOR	DATE	DESCRIPTION
N	2/2/78	REVISED AS INDICATED 1 PLACE
M	2/2/78	REVISED AS INDICATED 1 PLACE
L	2/2/78	REVISED AS INDICATED 1 PLACE
K	2/2/78	REVISED AS INDICATED 1 PLACE
J	2/2/78	REVISED AS INDICATED 1 PLACE
H	2/2/78	REVISED AS INDICATED 1 PLACE
G	2/2/78	REVISED AS INDICATED 1 PLACE
F	2/2/78	REVISED AS INDICATED 1 PLACE
E	2/2/78	REVISED AS INDICATED 1 PLACE
D	2/2/78	REVISED AS INDICATED 1 PLACE
C	2/2/78	REVISED AS INDICATED 1 PLACE
B	2/2/78	REVISED AS INDICATED 1 PLACE
A	2/2/78	REVISED AS INDICATED 1 PLACE

- NOTES:
- FOR LEGEND, NOTES, REFERENCES, AND STANDARD DETAILS, SEE DWG. D-215-001
 - CONDUITS CONTINUED UP, SEE DWG. D-215-322.

14
13
12
11
10
9
8
7
6
5
4
3
2
1

A
B
C
D
E
F
G
H
J
K

26
27
28
29
30
31
32
33
34

14
13
12
11
10
9
8
7
6
5
4
3
2
1

A
B
C
D
E
F
G
H
J
K

26
27
28
29
30
31
32
33
34

RIDS

8112030419

