

PUMP, VALVE AND CONTROL TABULATION

REF. DESIG.	DEVICE	FUNCTION	SWITCH	INDICATOR LAMPS	LOCATION
G33-F038	DRAIN TO WASTE COL. V.	51	X X		M12-P860-0C 1
G33-F034	DISCH. TO RAIN COHD. V.	52	X X		M12-P860-0C 1
G33-F041	RO BYPASS VALVE	53	X X		M12-P860-0C 1
G33-F042	RETURN ISOL. VALVE	54	X X		M12-P860-0C 1
G33-C001A	CLEANUP RECIRC. P. JUMP A	55A	X		M12-P860-0C 4
G33-C001B	CLEANUP RECIRC. P. JUMP B	55B	X X		M12-P860-0C 4
G33-F044	CLEANUP & DEMIN. BYPASS VALVE	56	X X		M12-P860-0C 1
G33-F100	CLEANUP LINE FROM 'A' RECIRC. LOOP VALVE	57	X X		M12-P860-0C 1
G33-F101	VESSEL DRAIN LINE RECIRC. VALVE	58	X X		M12-P860-0C 1
G33-F102	CLEANUP LINE SUCTION INSIDE CONTAINMENT VLV.	59	X X		M12-P860-0C 1
G33-F104	CLEANUP SYS. BYPASS VALVE	510	X X		M12-P860-0C 1
G33-F104	CLEANUP LINE FROM 'B' RECIRC. LOOP VALVE	511	X X		M12-P860-0C 1

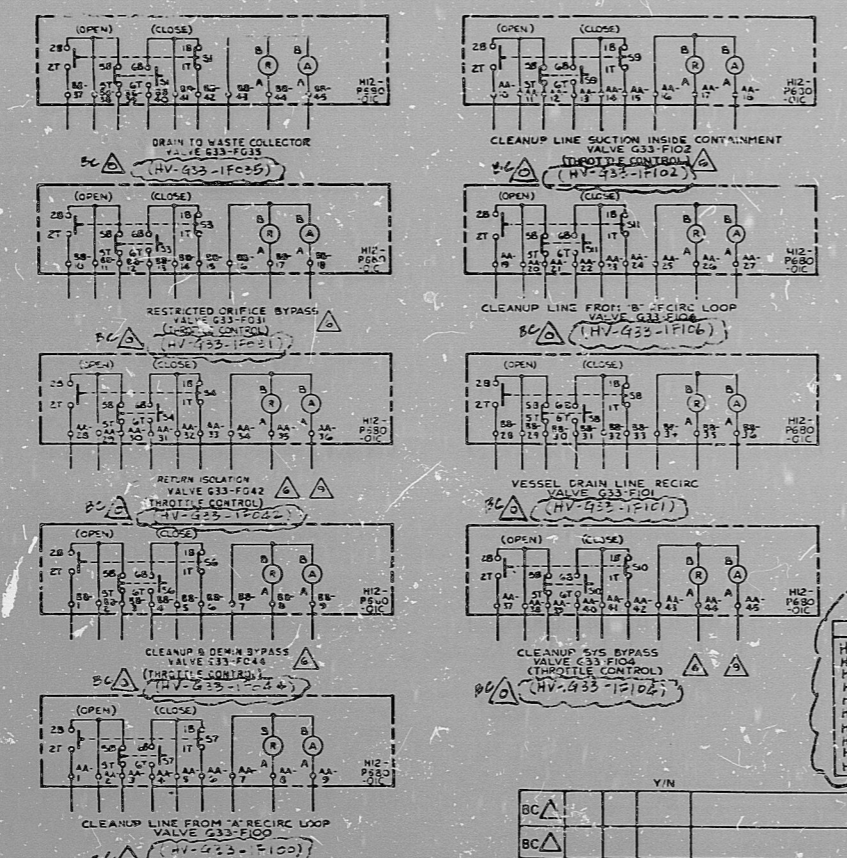
INDEX

SH. NO.	INDEX
1	NOTES, REFS., VLV. CONT., RELAY TAB.
2	ANN. PWR. DISTR., SW. DEV.
3	METERS, RECORDERS, INSTRUMENTS
4	PUMP LOGIC, INSTRUMENTS, METERS
5	DCS AND PHS COMPUTER INPUT

- NOTES:
- UNLESS OTHERWISE INDICATED, THE FOLLOWING REFERENCE DISPOSITIONS SHOW ON THIS DIAGRAM ARE APPLIED WITH G33A-:
 - FOR POWER DISTRIBUTION SEE SH. 2, FIG. 1
 - FOR POWER DISTRIBUTION SEE SH. 2, FIG. 3
 - FOR POWER DISTRIBUTION SEE SH. 2, FIG. 2
 - FURNISHED AND INSTALLED BY OTHERS.
 - ALL SHALL REMOVE SEAL-IN CONTACTS FROM THE VALVE MOTOR CONTROL CIRCUITRY ON ALL THROTTLING CONTROL VALVES.
 - INTRA-PANEL PROCESS INSTRUMENTATION SIGNAL LEADS SHALL BE BUNDLED AND ROUTED SEPARATELY FROM AC AND DC POWER WIRING PER 22A218 REV. 2.
 - DROPPING RESISTORS ARE LOCATED IN MCC.
 - SHOULD BE FED FROM DIV. 1 STANDBY POWER SUPPLY.
 - THIS CONNECTOR (G33-1000) IS IDENTIFIED BY THE SAME NUMBER AS THE ASSOCIATED LINE CODE. LINE CODES ARE DCS 4000 REF. 1.
 - ALL POCG SUPPLIED CABLES ARE NON-DIVISIONAL.

LIMITORQUE SWITCH CONTACT DEVELOPMENT

CONTACT NUMBER	VALVE POSITION	FUNCTION
L51	OPEN	BY-PASS CKT
L52	OPEN	IND LIGHT
L53	OPEN	IND LIGHT
L54	OPEN	IND LIGHT
L55	OPEN	BY-PASS CKT
L56	OPEN	IND LIGHT
L57	OPEN	IND LIGHT
L58	OPEN	IND LIGHT
L59	OPEN	IND LIGHT
L510	OPEN	DCS/SP/376
L511	OPEN	SPARE
L512	OPEN	SPARE
L513	OPEN	SPARE
L514	OPEN	SPARE/DCS
L515	OPEN	SPARE
L516	OPEN	SPARE



LEGEND:

- TS17 --- CLOSING TORQUE SWITCH INTERRUPTS CONTROL CIRCUIT IF MECHANICAL OVERLOAD OCCURS DURING CLOSING CYCLE OR FULLY CLOSED VALVE.
- TS18 --- OPENING TORQUE SWITCH INTERRUPTS CONTROL CIRCUIT IF MECHANICAL OVERLOAD OCCURS DURING OPENING CYCLE.
- CLOSE CONTACT
- OPEN CONTACT

TABLE "A"

VALVE NO.	POWER SUPPLY	WV. NO.
HV-4331F034	1B223073	E-105 4H2
HV-4331F035	1B253033	
HV-4331F031	1B253072	
HV-4331F042	1B217011	
HV-4331F044	1B249062	
HV-4331F100	1B263049	E-45 4H8
HV-4331F102	1B253053	
HV-4331F101	1B263031	
HV-4331F104	1B217013	E-105 4H4
HV-4331F106	1B263053	E-105 4H2

GE TYPE CR2 RELAY TAB (TOP)

GE TYPE	CR2	RELAY TAB (TOP)
K3A	SH 4	SP
K3B	SH 4	SP

AGSTAT TYPE SP RELAY TABULATION

BI	BO	BI	BO	BI	BO	BI	BO
K2A	G33-C001A	SP	SP	ANN. SH. 2	SP	SP	SP
K2B	G33-C001B	SP	SP	ANN. SH. 2	SP	SP	SP

AGSTAT TIME DELAY DELAY (T000) TABULATION

AGSTAT	TIME DELAY	DELAY (T000)	TABULATION
G33-R501A	SP	SP	DEF2 SH. 9
G33-R501B	SP	SP	DEF2 SH. 9

BECHTEL NO. PP. No.

M1-933-120	FF133010
M1-921-91	FF114310
M1-935-163	FF33010
M1-051-19	FF21010
M1-321-94	FF14510
M1-321-17	FF12010
M1-321-120	FF114710
M1-096-16	FF125210

APED DRAWING REVIEW COMMENTS AS CHECKED BELOW

NO COMMENTS AS INDICATED FROM ABOVE INFORMATION AND USE ONLY IF NO REPLY IS GUIDED.

NO COMMENTS AS INDICATED WHEN DIRECTLY SELECTING BECHTEL RESPONSIBILITY. REPLY REQUIRED IF NOT INCORPORATED BY 1/15/80.

FOR REFERENCE ONLY

APPROVED BY DATE

DESIGNED BY	DATE
CHECKED BY	DATE
APPROVED BY	DATE

INCORP. FOR E-50190

BY	CHK	DES.	ENG.	PROJ.	LETTER TO SUPPLIER
BCA	4	1/8	Y		

8856-M1-G33-153(1)-56
 FF133010

RIDS

8305250104

