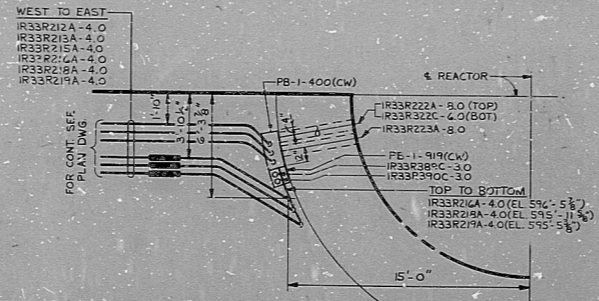


NOTES:-  
 1. FOR LEGEND, NOTES, REFERENCES, AND STANDARD DETAILS, SEE DWG. D-215-001.  
 2. CONDUITS CONTINUED UP, SEE DWG. D-215-321.

○ TYPICAL CONDUIT INSTALLATION FOR VALVE SOLENOID LIM SWITCHES

CLOSED LIM. SW. OPEN LIM. SW.   
 SOLENOID CONDUIT - 75' (UNLESS OTHERWISE NOTED ON CHART)

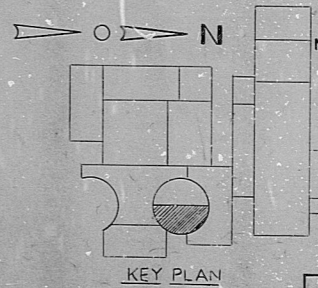
VALVE MPL. No.	BOX No.	SOLENOID No.	LIMIT SWITCH No.
		CND. No. (OPEN)	CND. No. (CLOSE)
1661-F265A	TR48-107	1661-F266A	1661-N277A
1661-F265B	TR48-107	1661-C183X	1661-N277A
1661-F265C	TR48-107	1661-F266B	1661-N277B
1661-F270A	TR48-107	1661-C193X	1661-N277A
1661-F270B	TR48-107	1661-F271A	1661-N277A
1661-F270C	TR48-107	1661-C186X	1661-N277A
1661-F270D	TR48-107	1661-F271B	1661-N277B
1661-F270E	TR48-107	1661-C194X	1661-N277A



AUXILIARY PLAN 'A'  
(THIS DWG.)

PLUG TYPE CONNECTION

DETAIL 'A'



KEY PLAN

TERA APERTURE CARD

REVISIONS	DATE	BY	DESCRIPTION
1	3/21/58	WJ	CONSTRUCTION AS NOTED
2			LIMITED CONSTRUCTION: AS NOTED
3			PRELIMINARY NOT FOR CONSTRUCTION BIDDING PURPOSES
4			REWORKED AND RECHECKED AS INDICATED
5			REWORKED AND RECHECKED AS INDICATED
6			REWORKED AND RECHECKED AS INDICATED
7			REWORKED AND RECHECKED AS INDICATED
8			REWORKED AND RECHECKED AS INDICATED
9			REWORKED AND RECHECKED AS INDICATED
10			REWORKED AND RECHECKED AS INDICATED
11			REWORKED AND RECHECKED AS INDICATED
12			REWORKED AND RECHECKED AS INDICATED
13			REWORKED AND RECHECKED AS INDICATED
14			REWORKED AND RECHECKED AS INDICATED
15			REWORKED AND RECHECKED AS INDICATED
16			REWORKED AND RECHECKED AS INDICATED
17			REWORKED AND RECHECKED AS INDICATED
18			REWORKED AND RECHECKED AS INDICATED
19			REWORKED AND RECHECKED AS INDICATED
20			REWORKED AND RECHECKED AS INDICATED
21			REWORKED AND RECHECKED AS INDICATED
22			REWORKED AND RECHECKED AS INDICATED
23			REWORKED AND RECHECKED AS INDICATED
24			REWORKED AND RECHECKED AS INDICATED
25			REWORKED AND RECHECKED AS INDICATED
26			REWORKED AND RECHECKED AS INDICATED
27			REWORKED AND RECHECKED AS INDICATED
28			REWORKED AND RECHECKED AS INDICATED
29			REWORKED AND RECHECKED AS INDICATED
30			REWORKED AND RECHECKED AS INDICATED

NUCLEAR SAFETY RELATED  
 DATE: 3/21/58  
 RELEASED FOR: ENGR.  
 THE CLEVELAND ELECTRIC ILLUMINATING COMPANY  
 PERRY NUCLEAR POWER PLANT UNIT 1  
 ELECTRICAL  
 CONDUIT LAYOUT  
 REACTOR BUILDING - EAST - EL. 576'-10"  
 DRAWING NO. 4549 D-215-311 M  
 DRAWING NUMBER 04549-000

KNS LYT R/R EAST EL 574-10

RIDS

8112030417

