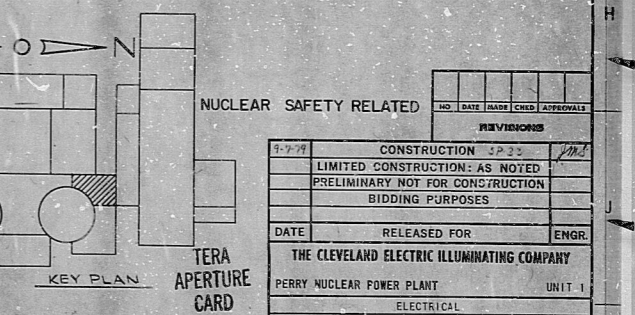
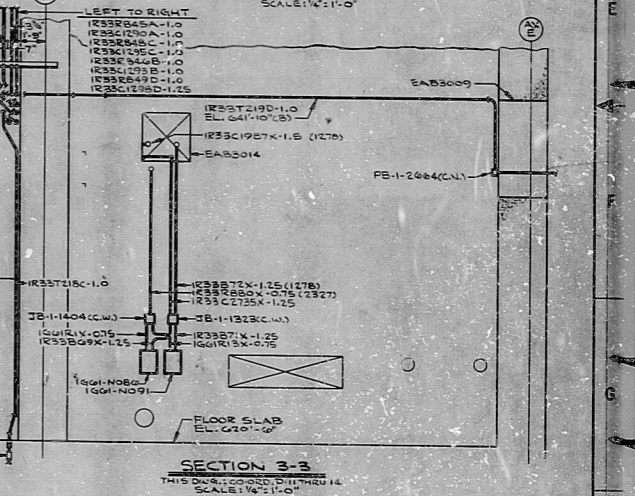
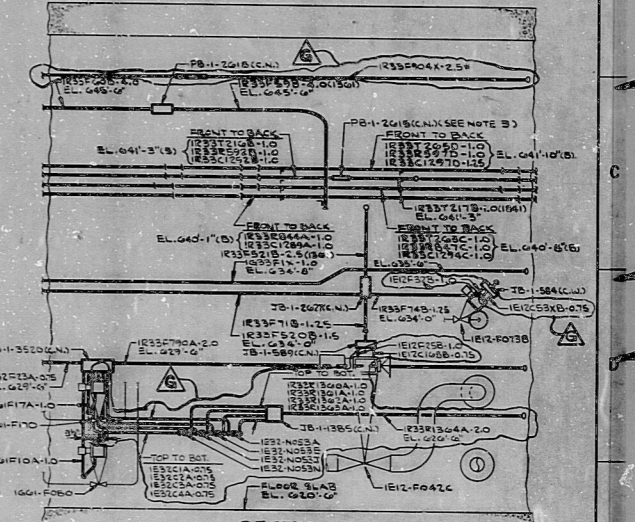


VALVE	BOX	SOLENOID	NO.	CHG. NO.	CHG. NO. (OPN)	CHG. NO. (CLOSE)
1E1-F300	7B-1203	1E1-F300	1E1-F300	1E1-F300	1E1-F300	1E1-F300
1E1-F300	7B-1203	1E1-F300	1E1-F300	1E1-F300	1E1-F300	1E1-F300
1E1-F300	7B-1203	1E1-F300	1E1-F300	1E1-F300	1E1-F300	1E1-F300
1G1-F100	7B-1008	1G1-F100	1G1-F100	1G1-F100	1G1-F100	1G1-F100
1G1-F100	7B-1008	1G1-F100	1G1-F100	1G1-F100	1G1-F100	1G1-F100
1G1-F200	7B-1009	1G1-F200	1G1-F200	1G1-F200	1G1-F200	1G1-F200
1G1-F200	7B-1009	1G1-F200	1G1-F200	1G1-F200	1G1-F200	1G1-F200



- NOTES:
1. FOR LEGEND, NOTES, REFERENCES, AND STANDARD DETAILS, SEE DWG. D-215-001.
2. CONDUITS CONTINUED DOWN, SEE DWG. D-215-222.
3. PULL BOXES TO BE SUPPORTED BY CONDUITS ONLY.
4. THIS DRAWING TO BE WORKED IN CONJUNCTION WITH THE FOLLOWING ELECTRICAL SUPPORT DRAWINGS: SS-215-232, SHEET C3; SS-215-232, SHEET C4; SS-215-232, SHEET C5; SS-215-232, SHEET C6.

REVISIONS	
NO.	DESCRIPTION
1	CONSTRUCTION 3/23
2	LIMITED CONSTRUCTION: AS NOTED
3	PRELIMINARY NOT FOR CONSTRUCTION BIDDING PURPOSES

APPROVALS	
DATE	RELEASED FOR ENGR.
THE CLEVELAND ELECTRIC ILLUMINATING COMPANY	
PERRY NUCLEAR POWER PLANT UNIT 1	
ELECTRICAL CONDUIT LAYOUT	
AUXILIARY BUILDING - WEST - EL. 62'-0"	
GILBERT ASSOCIATES, INC. ENGINEERS AND ARCHITECTS	
DRAWING NO. 04 4549 D-215-232	
DRAWING NUMBER	

Grid lines: 14, 13, 12, 11, 10, 9, 8, 7, 6, 5, 4, 3, 2, 1
Grid lines: A, B, C, D, E, F, G, H, J, K

RIDS

8120304B

