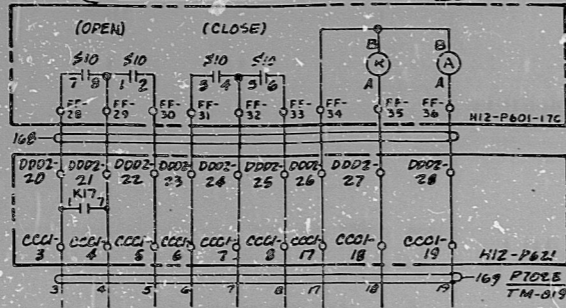
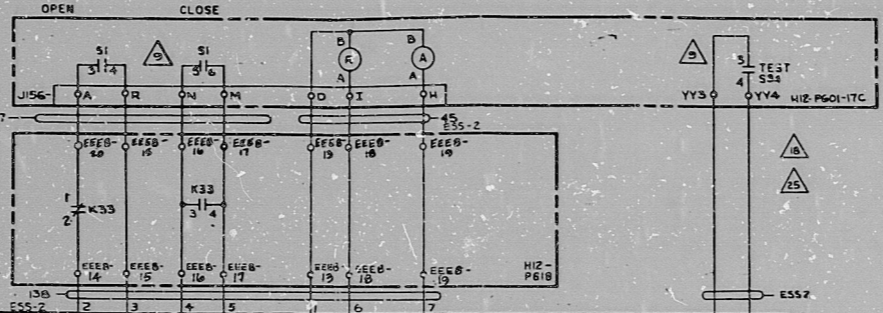


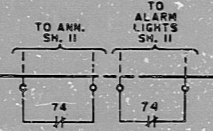
SCHEME NO. 1Q1309, E-154, SH.10



VALVE E51-F031
PUMP SUCTION FROM SUPPRESSION CHAMBER
SEE FIG 13 REF 16, SH.13



FUNCTIONALLY EQUIVALENT TO REF 16



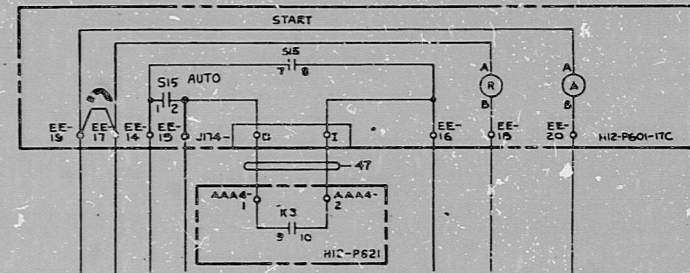
MOTOR CONTROL CENTER

SEE REF 16 FOR INTERNAL CONNECTIONS

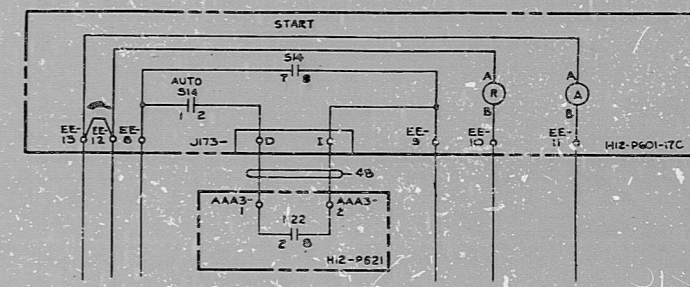
VALVE MOTOR

VALVE E51-F003 (AC)
STEAM SUPPLY LINE ISOLATION (INBOARD)
SEE REF 16, FIG 2, SH.2

DEVICE	BECHTEL NO.	BECHTEL DNG	POWER SOURCE
BAROMETRIC CONDENSER VAC. PUMP	1P219	E-154, SH.1	250V DC PNL 1D254 CUB 061
BAROMETRIC CONDENSER VAC. TANK COND. P.M.P.	1P220	E-154, SH.2	250V DC PNL 1D254 CUB 062
VALVE E51-F031	HV-EFI-1F031	E-154, SH.10	250V DC PNL 1D254 CUB 043



BAROMETRIC CONDENSER VACUUM PUMP



BAROMETRIC CONDENSER VACUUM TANK CONDENSATE PUMP

DISTRIBUTION	QTY	DATE
CIVIL		
ELECTRICAL		
MECHANICAL		
PLANT DESIGN		
CONTROL SYS.		
ARCH.		
SCHEDULE		
EST.		
PURCHASING		
EXPEDITING		
INSPECTION		
STARTUP		
FIELD		
RECORD		

4-8-82
APED DRAWING REVIEW
COMMENTS AS CHECKED BELOW
NO COMMENTS
COMMENTS AS INDICATED FOR APD'S INFORMATION AND USE ONLY. NO REPLY REQUIRED.
COMMENTS AS INDICATED, WHEN DIRECTLY AFFECTING BECHTEL RESPONSIBILITY, REPLY REQUIRED IF NOT INCORPORATED BY APD.
FORM 100-101
REVIEWED BY: [Signature]
DATE: 4/8/82
BECHTEL JOB NO 8856
SAN FRANCISCO

PRC APERTURE CARD
UNCONTROLLED DOCUMENT FOR REFERENCE ONLY

BC	Doc	Date	By	CHK	Des.	ENG.	Proj.	Latw.	Suppl.
BC	12	4/8/82	Y						
INCR 9 FOR E-30250, DC N 10 (FDR) M 4 BLD -FR-1025 RD, INCORP BY VENDOR									
Bechtel Change to Supplier Documents BY CHK Des. Suppl. Proj. Eng. Latw. Suppl.									

8856-11-E51-90(7)-70211

NO.	DATE	BY	CHKD BY	REVISION	DESCRIPTION
9	11/25/81	1	...
10	11/27/82	2	...
12	11/30/82	3	...

FF 129010

LINE CODES	55, 47, AB, 137, 138	169, 163
...
...
...

66 71

66 11

66 58

8.5"

11"

17

16 X

RIDS

8305250085

