

NOTES:

- FOR NOTES AND REFERENCES, SEE DWG. D-215-152.
- CONDUITS CONTINUED UP, SEE DWG. D-215-161. CONDUITS CONTINUED DOWN, SEE DWG. D-215-141.
- THIS DRAWING IS TO BE WORKED IN CONJUNCTION WITH THE FOLLOWING ELECTRICAL SUPPORT DWGS.:
 - SS-215-151, SHEET CS

REVISIONS

NO.	DESCRIPTION	DATE	BY	CHKD.
1	CONSTRUCTION	5/3/52		
2	PRELIMINARY NOT FOR CONSTRUCTION BIDDING PURPOSES			

THE CLEVELAND ELECTRIC ILLUMINATING COMPANY

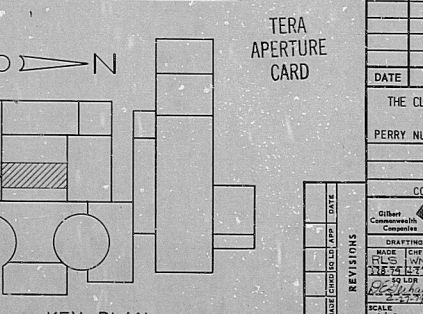
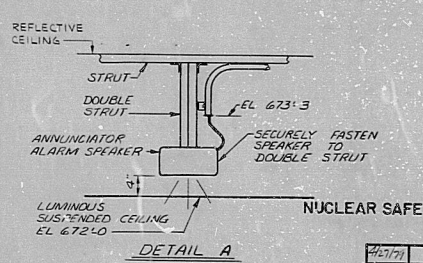
PERRY NUCLEAR POWER PLANT UNITS 1 & 2

CONDUIT LAYOUT

CONTROL COMPLEX - EAST - EL. 654'-6"

GILBERT ASSOCIATES, INC.
ENGINEERS AND CONSULTANTS
READING, PA.

DATE: 04-15-52
DRAWING NUMBER: D-215-151
SHEET: 15 OF 15



RIDS

8112030387

