

34"

34"

22"

22"

17"

17"

11"

11"

8.5"

8.5"

8.5"

8.5"

11"

11"

17"

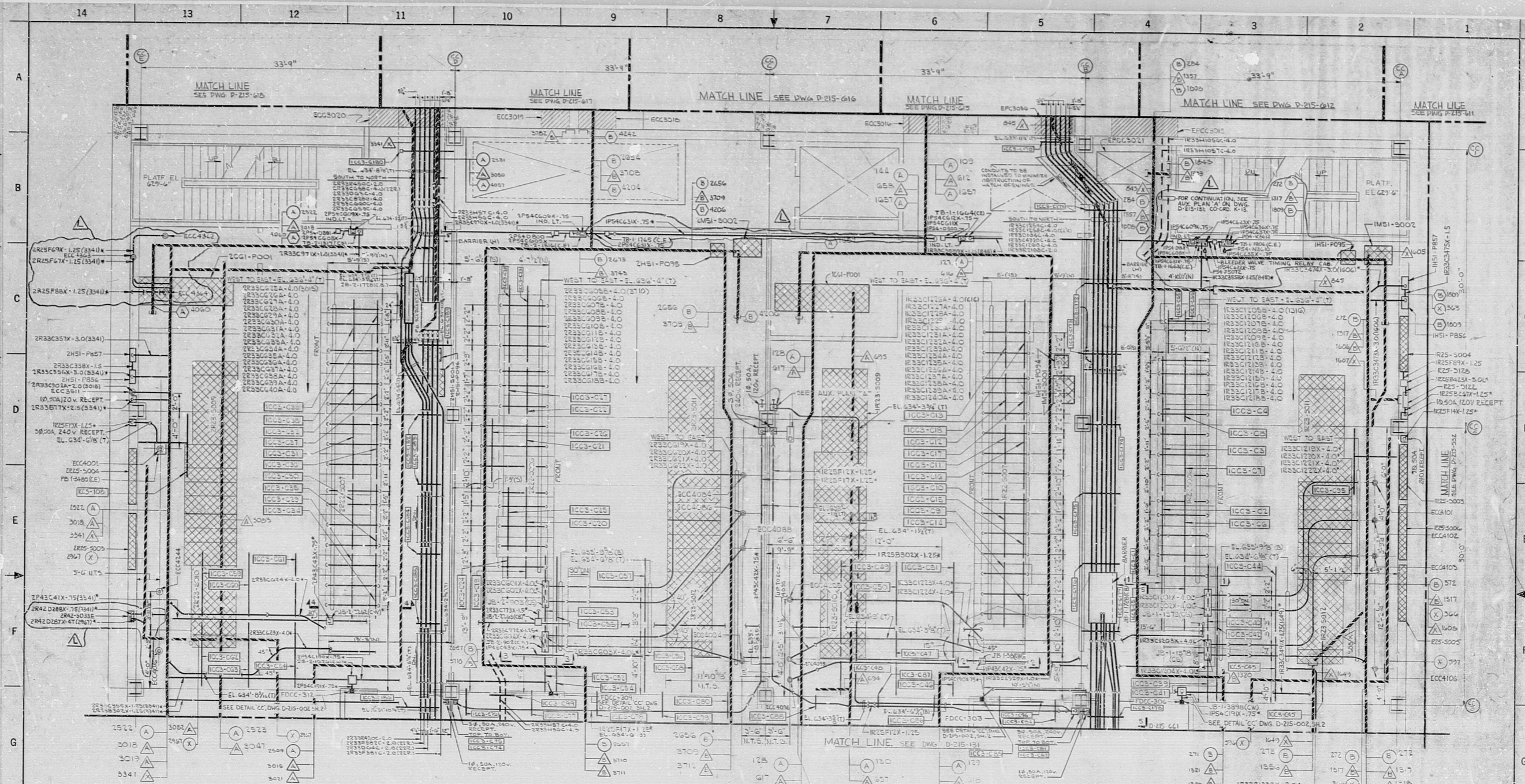
17"

22"

22"

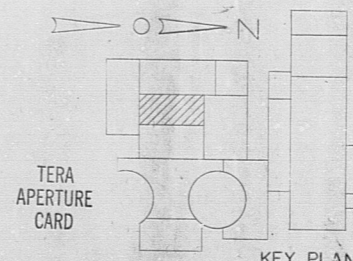
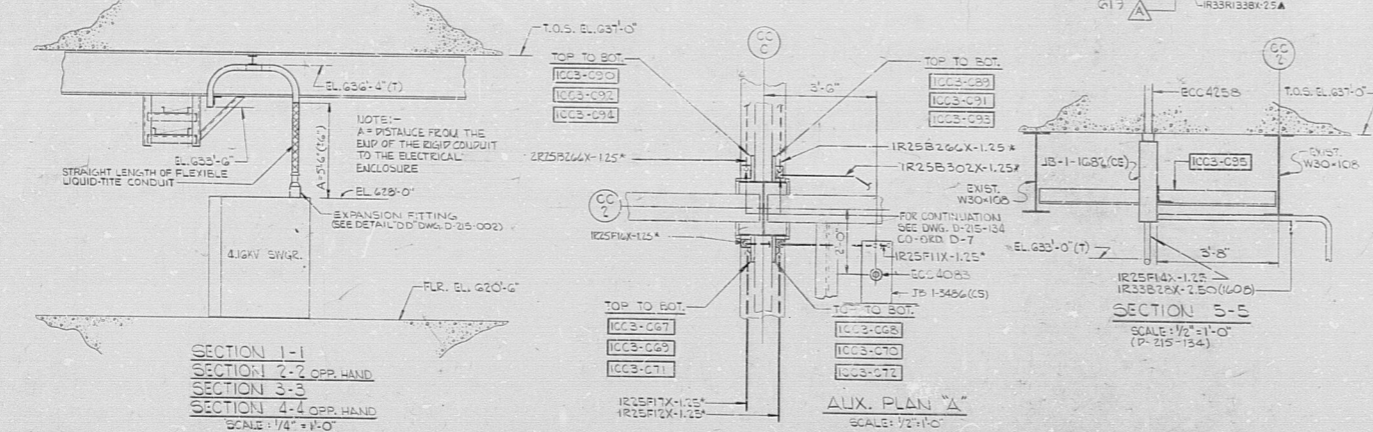
34"

34"



POOR ORIGINAL

- NOTES:-
1. FOR NOTES AND REFERENCES, SEE DWG. D-215-132.
 2. CONDUITS CONTINUED UP, SEE DWG. D-215-142.
 3. CONDUITS CONTINUED DOWN, SEE DWG. D-215-122.
 4. FOR ADDITIONAL CONDUITS IN THIS AREA AND CONDUITS TO EQUIPMENT INDICATED WITH CROSS-HATCHING, SEE DWG. D-215-124.
 5. THESE NON-MSR CONDUITS TO BE SEISMICALLY SUPPORTED. THREADED ROD CRITERIA MAY NOT BE USED.



REVISIONS		APPROVALS	
NO.	DATE	BY	FOR
1	6/1/71		

REVISIONS		APPROVALS	
NO.	DATE	BY	FOR
1	6/1/71		

REVISIONS		APPROVALS	
NO.	DATE	BY	FOR
1	6/1/71		

REVISIONS		APPROVALS	
NO.	DATE	BY	FOR
1	6/1/71		

REVISIONS		APPROVALS	
NO.	DATE	BY	FOR
1	6/1/71		

REVISIONS		APPROVALS	
NO.	DATE	BY	FOR
1	6/1/71		

REVISIONS		APPROVALS	
NO.	DATE	BY	FOR
1	6/1/71		

REVISIONS		APPROVALS	
NO.	DATE	BY	FOR
1	6/1/71		

REVISIONS		APPROVALS	
NO.	DATE	BY	FOR
1	6/1/71		

REVISIONS		APPROVALS	
NO.	DATE	BY	FOR
1	6/1/71		

REVISIONS		APPROVALS	
NO.	DATE	BY	FOR
1	6/1/71		

REVISIONS		APPROVALS	
NO.	DATE	BY	FOR
1	6/1/71		

REVISIONS		APPROVALS	
NO.	DATE	BY	FOR
1	6/1/71		

REVISIONS		APPROVALS	
NO.	DATE	BY	FOR
1	6/1/71		

REVISIONS		APPROVALS	
NO.	DATE	BY	FOR
1	6/1/71		

RIDS

8112030355

