

22"

22"

17"

17"

11"

11"

9.5"

9.5"

8.5"

8.5"

11"

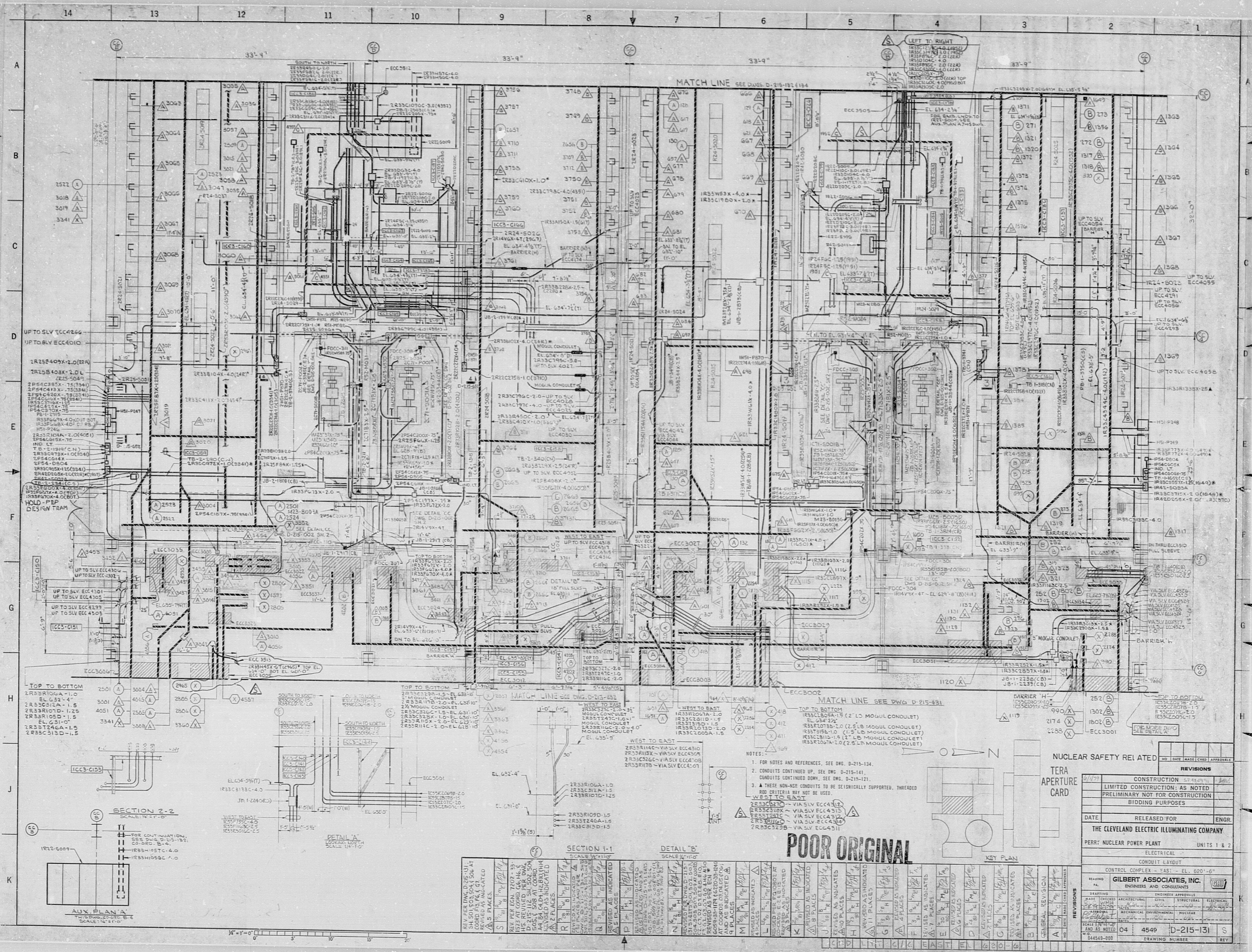
11"

17"

17"

22"

22"

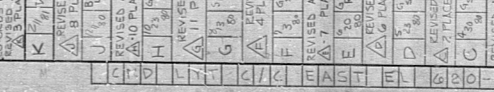
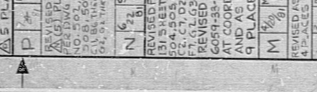
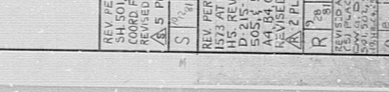
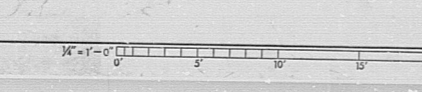
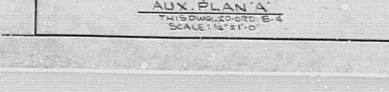
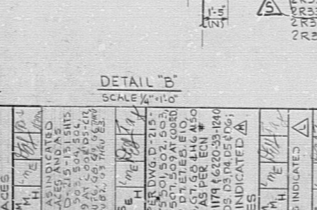
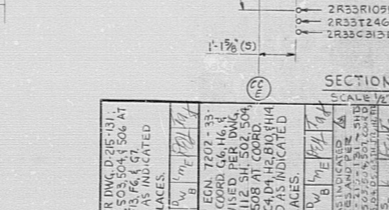
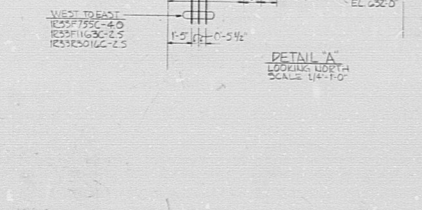
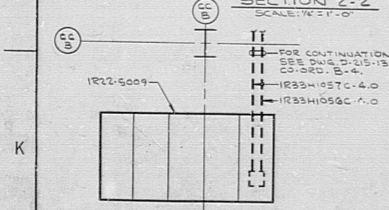


NOTES

- FOR NOTES AND REFERENCES, SEE DWG. D-215-134.
- CONDUITS CONTINUED UP, SEE DWG. D-215-141.
- CONDUITS CONTINUED DOWN, SEE DWG. D-215-121.
- THESE NON-NEE CONDUITS TO BE SEISMICALLY SUPPORTED, THREADED ROD CRITERIA MAY NOT BE USED.

NUCLEAR SAFETY RELATED		REVISIONS	
DATE	RELEASED FOR	ENGR.	
<p>THE CLEVELAND ELECTRIC ILLUMINATING COMPANY</p> <p>PERRY NUCLEAR POWER PLANT UNITS 1 & 2</p> <p>ELECTRICAL</p> <p>CONDUIT LAYOUT</p> <p>CONTROL COMPLEX - EAST - EL. 620'-0"</p> <p>GILBERT ASSOCIATES, INC.</p> <p>ENGINEERS AND CONSULTANTS</p>			
DATE	RELEASED FOR	ENGR.	
<p>CONSTRUCTION: AS NOTED</p> <p>PRELIMINARY NOT FOR CONSTRUCTION</p> <p>BIDDING PURPOSES</p>			
DATE	RELEASED FOR	ENGR.	
<p>SCALE: 1/8" = 1'-0"</p> <p>DRAWING NUMBER: 04 4549 D-215-131 S</p> <p>DRAWING NUMBER: 04549-200</p>			

POOR ORIGINAL



REV.	DATE	BY	DESCRIPTION
1			
2			
3			
4			
5			
6			
7			
8			
9			
10			
11			
12			
13			
14			
15			
16			
17			
18			
19			
20			
21			
22			
23			
24			
25			
26			
27			
28			
29			
30			
31			
32			
33			
34			
35			
36			
37			
38			
39			
40			
41			
42			
43			
44			
45			
46			
47			
48			
49			
50			
51			
52			
53			
54			
55			
56			
57			
58			
59			
60			
61			
62			
63			
64			
65			
66			
67			
68			
69			
70			
71			
72			
73			
74			
75			
76			
77			
78			
79			
80			
81			
82			
83			
84			
85			
86			
87			
88			
89			
90			
91			
92			
93			
94			
95			
96			
97			
98			
99			
100			

RIDS

8112030353

