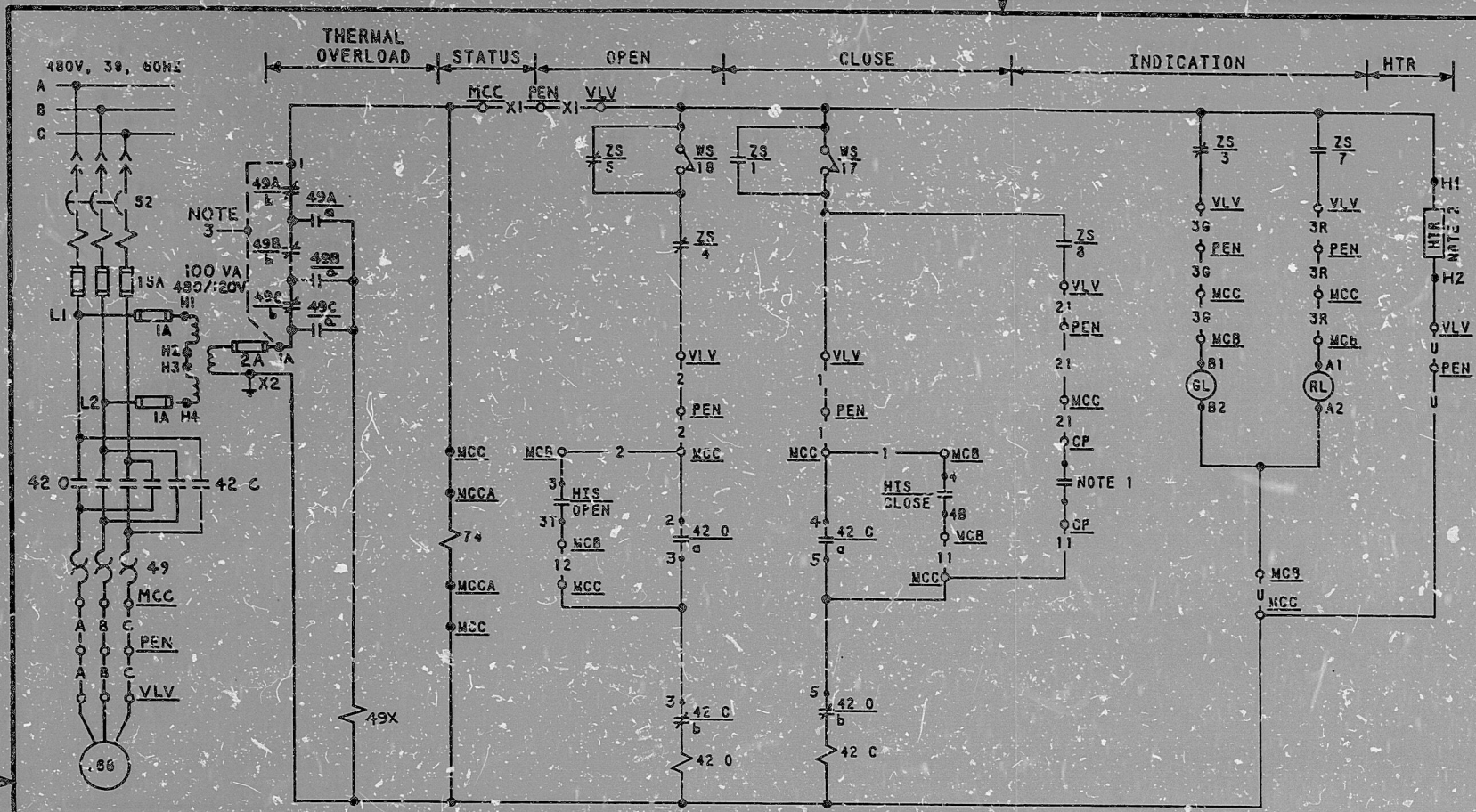


This drawing and the design it covers is the property of the utilities which are participating in the SNUPPS Project. It is loaned on the borrower's express agreement that it will not be reproduced, copied, loaned, exhibited, or used except in the limited way and private use permitted by written consent given by the SNUPPS utilities to the borrower.



OPEN		CONTACT		POSITION	
SL	RL			NORM	CLOSE OPEN
		1-11	17	X	X
		3-11	31		X
		2-11	23	X	X
		4-11	49		X

CUTLER-HAMMER TYPE E30 JYS WITH TWO KLA3 CONTACT BLOCKS

HAND INDICATING SWITCH HIS-SEE TABLE A MOMENTARY CONTACT

ROTOR	LIMIT SWITCH CONTACT DEVELOPMENT		FUNCTION
	CONT.	VALVE POSITION	
	FULL OPEN	FULL CLOSED	
1			BYPASS CKT
2			SPARE
3			IND LIGHT
4			OPEN CKT
5			BYPASS CKT
6			NOTE 4
7			IND LIGHT
8			CLOSE CKT
9			SPARE
10			SPARE
11			NOT USED
12			SPARE
13			SPARE
14			COMPUTER
15			NOT USED
16			SPARE
17			TORQUE SW OPENS ON HI CLOSING TORQUE
18			TORQUE SW OPENS ON HI OPENING TORQUE

SOLID BAR INDICATES CONTACT CLOSED

REFERENCE DWGS:
M-02LF09
J-02LF03

- TO STATUS PANEL, SEE DWG. E 035A03
- JUMPER TO BE INSTALLED PRIOR TO CORE LOADING
- HEATER, 25 WATTS, MANUFACTURER TYPE WARD LEONARD P/N 25F750WL OR EQUAL.
- CONTACT CLOSING ON CONTAINMENT ISOLATION SIGNAL, FOR DETAILS SEE WESTINGHOUSE DWG. BECTEL V.P. NO. M-767-182 FOR RELAY & CONTACT NUMBERS SEE TABLE A

NOTES:

NO.	DATE	REVISIONS	BY	CHKD	DESIGN	ENGR	DRWG

SCALE: DESIGNED T, DRAPP CAD

BECTEL
GAITHERSBURG, MARYLAND

SNUPPS

SCHEMATIC DIAGRAM
REACTOR BLDG SUMP PUMPS DISCHARGE ISOLATION VALVE

UTILITY DRAWING NO.	REV	
JOB NO.	BECTEL DRAWING NO.	REV
10486	E-03LF08 (0)	2

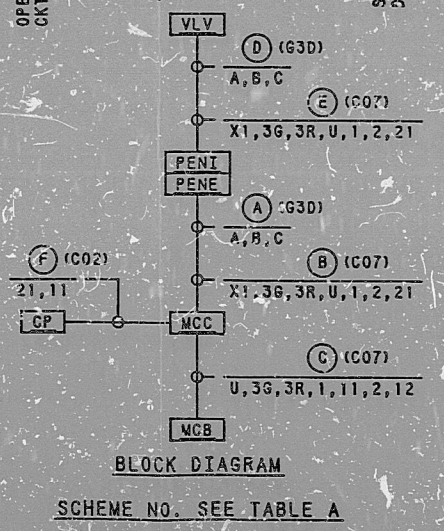
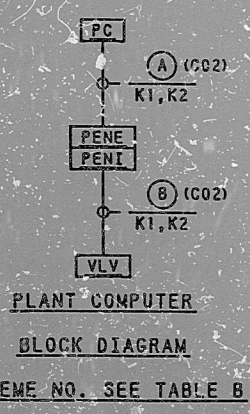
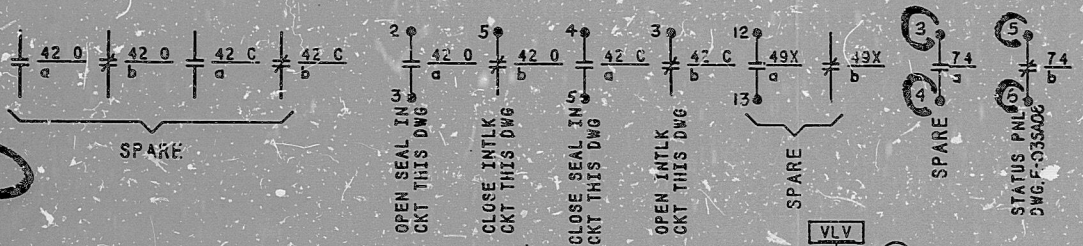
DATE: 6-17-80 OPERATOR: Steven S. Edger SUPERVISOR: [Signature]

TABLE B

COMPUTER REF DWG	J-106-014
BECTEL V.P. NO.	
COMPUTER POINT	LF295
COMPUTER LOC-PC	RJ159A
PENETRATION NO.-PEN	ZNE277
VALVE NO.-VLV	LFFV95
COMPUTER SCHEME NO.	1LFR08A

TABLE A

CIS RLY 1 st CONTACT NO.	K630 17-18
PENETRATION NO.-PEN	ZNE277
MCCA LOC-MCCA	NG018FR1
CONT. PNL. LOC-CP	SB029C
MCC LOCATION-MCC	NG018BR2
HIS NUMBER	LFHIS95
HIS LOCATION-MCB	RL023
VALVE NO.-VLV	LFFV95
SCHEME NO.	1LFG08A



REVIEW LEVEL 3

16X

DIAGRAM

8410040017

PDR RIDS

