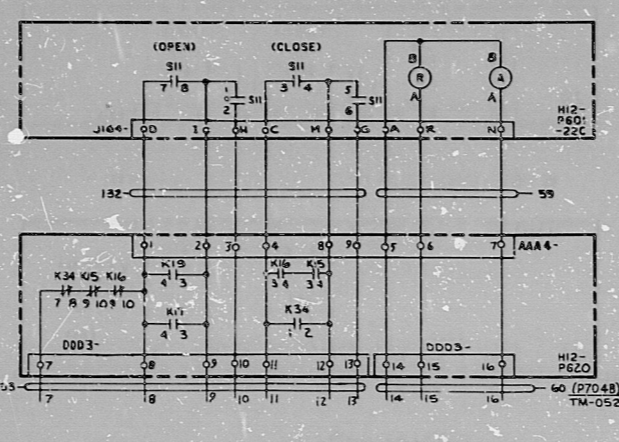
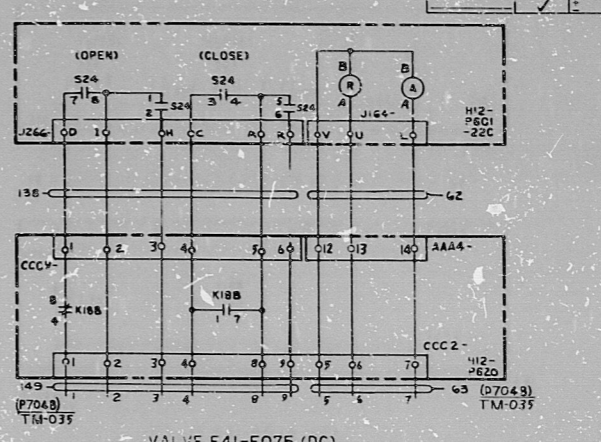


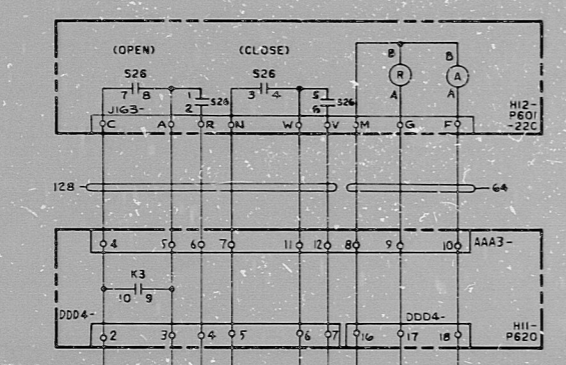
VALVE E41-F004 (DC)
PUMP SUCTION FROM CONDENSATE STORAGE TANK
SEE FIG. 14 REF. 15



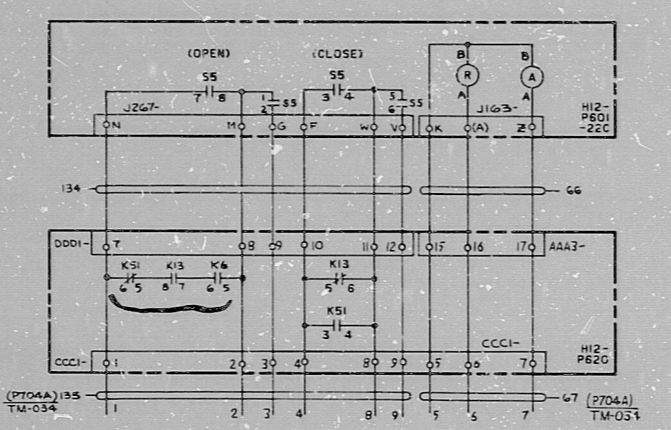
VALVE E41-F042 (DC)
PUMP SUCTION FROM
SUPPRESSION CHAMBER
SEE FIG. 14 REF. 15



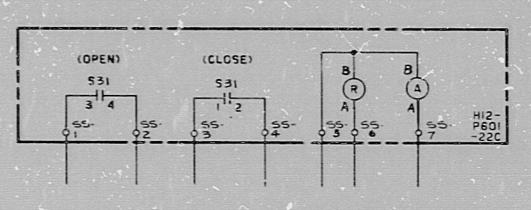
VALVE E41-F075 (DC)
TURBINE EXHAUST VACUUM BREAKER
(OUTBOARD)
SEE FIG. 12 REF. 15



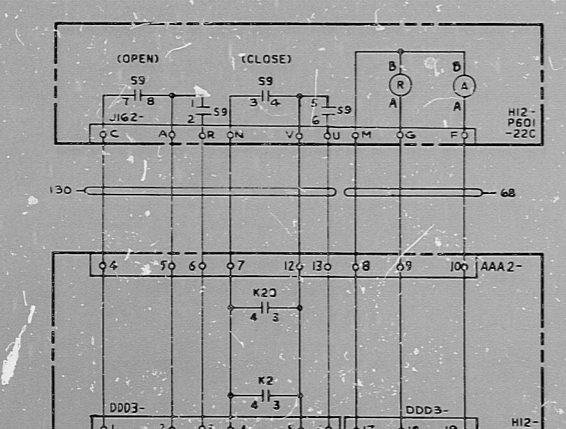
VALVE E41-F059 (DC)
LUBE OIL COOLING WATER
PUMP DISCHARGE
SEE FIG. 15 REF. 15



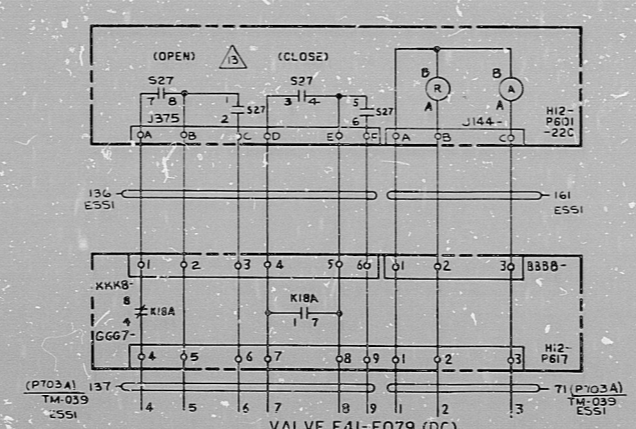
VALVE E41-F006 (DC)
PUMP DISCHARGE
SEE FIG. 14 REF. 15



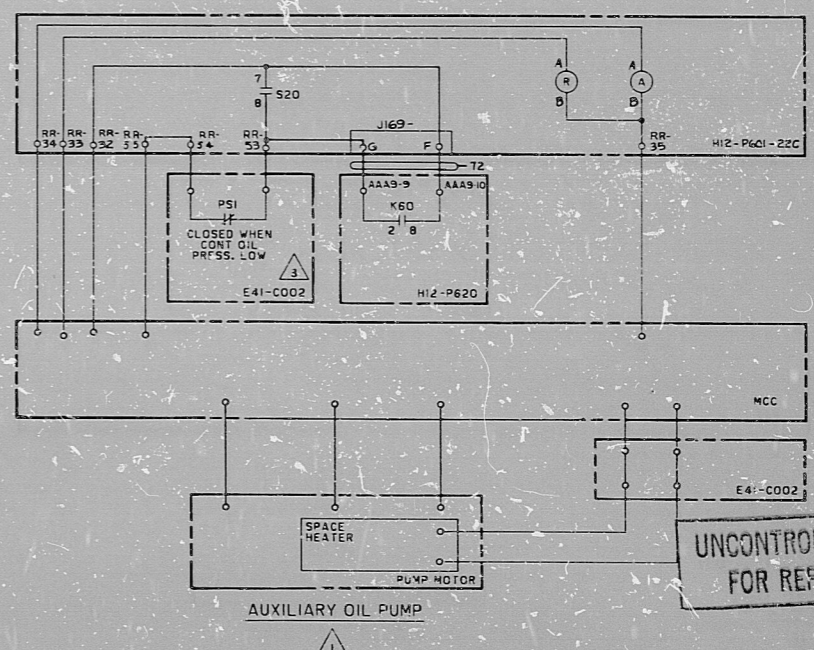
VALVE E41-F066 (DC)
TURBINE EXHAUST VALVE
SEE FIG. 13 REF. 15



VALVE E41-F011 (DC)
REDUNDANT SHUTOFF TO CONDENSATE
STORAGE TANK
SEE FIG. 12 REF. 15



VALVE E41-F079 (DC)
TURBINE EXHAUST VACUUM BREAKER
(INBOARD)
SEE FIG. 12 REF. 15



AUXILIARY OIL PUMP

UNCONTROLLED DOCUMENT
FOR REFERENCE ONLY

8856-M1-E41-59 (8)-8

RECORD-MYLAR
UNIT 2

FF127250

NO.	REV.	DATE	BY	CHKD BY	DESCRIPTION
10	NJ18931	7/20	CJS		REVISED
14	NJ34270	2/27	NE		GENERAL DC CHANGE NET TO GAB NE 70050 NE 95683 CHK BY: CHV D: CRT E: J

DESIGNED BY	CHARTERED	DATE	NO. & I	791E420AE
CHECKED BY	K BRY / 5 STOKES	DATE	SAN JOSE	
APPROVED BY		DATE		
CIVIL	EIS			

LINE CODES:
57-60, 62-72, 126-138, 149-161

66 71

11

8.5"

8.5"

11"

17"

791E420AE

APPROVED BY
CHECKED BY
DATE

PRC
APERTURE
CARD

30X

PROPERTY OF THE UNITED STATES GOVERNMENT
THIS DRAWING IS NOT TO BE REPRODUCED OR TRANSMITTED IN ANY FORM OR BY ANY MEANS
WITHOUT THE WRITTEN PERMISSION OF THE GENERAL MANAGER, WESTINGHOUSE ELECTRIC CORPORATION
DANNY

RIDS

830925005 |

