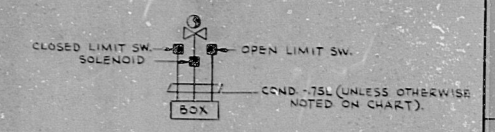
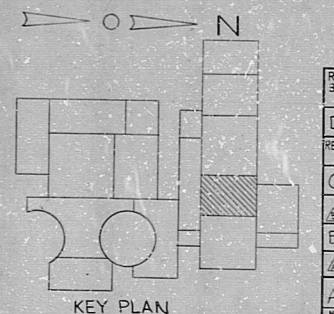


3 TYPICAL CONDUIT INSTALLATION FOR VALVE SOLENOID & LIMIT SWITCH.



VALVE MFL NO.	BOX NO.	SOLENOID CND. NO.	LIMIT SW. CND. NO.	OPEN	CLOSED
INZ1-F100A	JB-1-1697	INZ1-F12A	INZ1-N131A		
INZ1-F100B	JB-1-1699	INZ1-F12B	INZ1-N131B		
INZ1-F100C	JB-1-1702	INZ1-F12C	INZ1-N131C		
INZ1-F100D	JB-1-1704	INZ1-F12D	INZ1-N131D		
INZ1-F100E	JB-1-1706	INZ1-F12E	INZ1-N131E		
INZ1-F100F	JB-1-1708	INZ1-F12F	INZ1-N131F		
INZ1-F100G	JB-1-1710	INZ1-F12G	INZ1-N131G		
INZ1-F100H	JB-1-1712	INZ1-F12H	INZ1-N131H		
INZ1-F100I	JB-1-1714	INZ1-F12I	INZ1-N131I		
INZ1-F100J	JB-1-1716	INZ1-F12J	INZ1-N131J		
INZ1-F100K	JB-1-1718	INZ1-F12K	INZ1-N131K		
INZ1-F100L	JB-1-1720	INZ1-F12L	INZ1-N131L		
INZ1-F100M	JB-1-1722	INZ1-F12M	INZ1-N131M		
INZ1-F100N	JB-1-1724	INZ1-F12N	INZ1-N131N		

- NOTES:
- FOR LEGEND, NOTES, REFERENCES, AND STANDARD DETAILS, SEE DWG. D-215-001.
  - CONDUITS CONTINUED UP, SEE DWG. D-215-043.
  - CONDUITS CONTINUED DOWN, SEE DWG. D-215-023.



KEY PLAN

NUCLEAR SAFETY RELATED REVISIONS

NO.	DATE	DESCRIPTION	BY	CHKD.
1		CONSTRUCTION OF 25-26		
2		LIMITED CONSTRUCTION, AS NOTED		
3		PRELIMINARY NOT FOR CONSTRUCTION		
4		BIDDING PURPOSES		

DATE: \_\_\_\_\_ RELEASED FOR: \_\_\_\_\_ ENGR: \_\_\_\_\_

THE CLEVELAND ELECTRIC ILLUMINATING COMPANY

PERRY NUCLEAR POWER PLANT UNIT 1

ELECTRICAL CONDUIT LAYOUT

TURBINE BUILDING, EL. 624'-6"

READING PA. GILBERT ASSOCIATES, INC. ENGINEERS AND CONSULTANTS

REVISIONS	ENGINEER APPROVALS
DATE: 11/11/60	MECHANICAL: _____
DATE: 11/11/60	CIVIL: _____
DATE: 11/11/60	STRUCTURAL: _____
DATE: 11/11/60	ELECTRICAL: _____
DATE: 11/11/60	MECHANICAL/ENVIRONMENTAL: _____
DATE: 11/11/60	NUCLEAR: _____

NO. 04 4549 D-215-033 D

DRAWING NUMBER REV

22"  
17"  
11"  
8.5"  
17"  
22"

22"  
17"  
11"  
8.5"  
17"  
22"

CND LYT T/B EL 624'-6"

RIDS

8112030239

