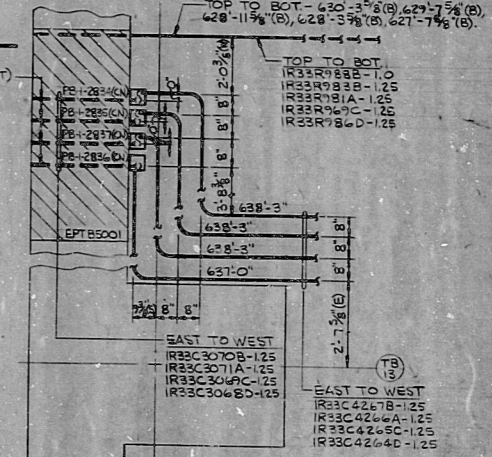


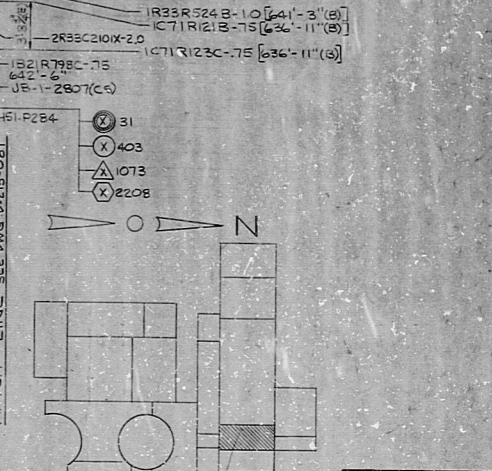
TYPICAL CONDUIT INSTALLATION FOR VALVE SOLENOID & LIMIT SWITCHES.

VALVE M.P.L. NO.	BOX NO.	SOLENOID NR. CND. NR.	LIMIT SWITCH NR. CND. NR. (OPEN)	LIMIT SWITCH NR. CND. NR. (CLOSED)
IN22-705A	JB-1-1620		IN22-N086A	IN22-N086A
IN22-705B	JB-1-1619		IN22-N086B	IN22-N086B



ENLARGED PLAN A SCALE 1/2" = 1'-0"

- NOTES:
- FOR LEGEND, NOTES, REFERENCES, AND STANDARD DETAILS, SEE DWG. D-215-001.
 - CONDUITS CONTINUED UP, SEE DWG. D-215-042. CONDUITS CONTINUED DOWN, SEE DWG. D-215-022.



KEY PLAN NUCLEAR SAFETY RELATED

DATE	RELEASED FOR CONSTRUCTION	ENGR.
THE CLEVELAND ELECTRIC ILLUMINATING COMPANY		
PERRY NUCLEAR POWER PLANT UNIT I		
ELECTRICAL CONDUIT LAYOUT		
TURBINE BUILDINGS - EAST - EL. 624'-6"		
DESIGNED BY	ENGINEER APPROVALS	DATE
CHECKED BY	CIVIL APPROVALS	
DRAWN BY	MECHANICAL APPROVALS	
SCALE	DATE	
04	4549	D-215-032
04549-000		REV

REV PER DWG. 02/26/02	BY	REASON
01		ISSUED FOR CONSTRUCTION
02		REVISED AS INDICATED
03		REVISED AS INDICATED
04		REVISED AS INDICATED
05		REVISED AS INDICATED
06		REVISED AS INDICATED
07		REVISED AS INDICATED
08		REVISED AS INDICATED
09		REVISED AS INDICATED
10		REVISED AS INDICATED
11		REVISED AS INDICATED
12		REVISED AS INDICATED
13		REVISED AS INDICATED
14		REVISED AS INDICATED
15		REVISED AS INDICATED
16		REVISED AS INDICATED
17		REVISED AS INDICATED
18		REVISED AS INDICATED
19		REVISED AS INDICATED
20		REVISED AS INDICATED
21		REVISED AS INDICATED
22		REVISED AS INDICATED
23		REVISED AS INDICATED
24		REVISED AS INDICATED
25		REVISED AS INDICATED
26		REVISED AS INDICATED
27		REVISED AS INDICATED
28		REVISED AS INDICATED
29		REVISED AS INDICATED
30		REVISED AS INDICATED
31		REVISED AS INDICATED
32		REVISED AS INDICATED
33		REVISED AS INDICATED
34		REVISED AS INDICATED
35		REVISED AS INDICATED
36		REVISED AS INDICATED
37		REVISED AS INDICATED
38		REVISED AS INDICATED
39		REVISED AS INDICATED
40		REVISED AS INDICATED
41		REVISED AS INDICATED
42		REVISED AS INDICATED
43		REVISED AS INDICATED
44		REVISED AS INDICATED
45		REVISED AS INDICATED
46		REVISED AS INDICATED
47		REVISED AS INDICATED
48		REVISED AS INDICATED
49		REVISED AS INDICATED
50		REVISED AS INDICATED
51		REVISED AS INDICATED
52		REVISED AS INDICATED
53		REVISED AS INDICATED
54		REVISED AS INDICATED
55		REVISED AS INDICATED
56		REVISED AS INDICATED
57		REVISED AS INDICATED
58		REVISED AS INDICATED
59		REVISED AS INDICATED
60		REVISED AS INDICATED
61		REVISED AS INDICATED
62		REVISED AS INDICATED
63		REVISED AS INDICATED
64		REVISED AS INDICATED
65		REVISED AS INDICATED
66		REVISED AS INDICATED
67		REVISED AS INDICATED
68		REVISED AS INDICATED
69		REVISED AS INDICATED
70		REVISED AS INDICATED
71		REVISED AS INDICATED
72		REVISED AS INDICATED
73		REVISED AS INDICATED
74		REVISED AS INDICATED
75		REVISED AS INDICATED
76		REVISED AS INDICATED
77		REVISED AS INDICATED
78		REVISED AS INDICATED
79		REVISED AS INDICATED
80		REVISED AS INDICATED
81		REVISED AS INDICATED
82		REVISED AS INDICATED
83		REVISED AS INDICATED
84		REVISED AS INDICATED
85		REVISED AS INDICATED
86		REVISED AS INDICATED
87		REVISED AS INDICATED
88		REVISED AS INDICATED
89		REVISED AS INDICATED
90		REVISED AS INDICATED
91		REVISED AS INDICATED
92		REVISED AS INDICATED
93		REVISED AS INDICATED
94		REVISED AS INDICATED
95		REVISED AS INDICATED
96		REVISED AS INDICATED
97		REVISED AS INDICATED
98		REVISED AS INDICATED
99		REVISED AS INDICATED
100		REVISED AS INDICATED

14
13
12
11
10
9
8
7
6
5
4
3
2
1

A
B
C
D
E
F
G
H
J
K

8.5"
11"
17"
22"
34"

14
13
12
11
10
9
8
7
6
5
4
3
2
1

A
B
C
D
E
F
G
H
J
K

8.5"
11"
17"
22"
34"

RIPS

8112030236

