

Rev	Date	By	CHK	ENG	PROJ	APP	REASON
9-23-82	BCA	5	Y				INCORP FOR E-50075
	BCA	5	Y				SEE BELOW
	BCA	3	Y				INCORP IDEN W/ (DCP) DOC. R/20
							ECNE-1520

APED DRAWING REVIEW COMMENTS AS CHECKED BELOW

NO COMMENTS

COMMENTS AS INDICATED FOR APEDS IN FORMATION AND USE ONLY. NO REPLY REQUIRED.

COMMENTS AS INDICATED WHICH DIRECTLY AFFECTING SAFETY. RESPONSIBILITY REQUIRED IF NOT INCORPORATED BY APED.

FOR APPROVAL DATE RECEIVED BY

BECHTEL JOB NO. 1

UNCONTROLLED DOCUMENT FOR REFERENCE ONLY

8856-M1-E21-35(5)-&7

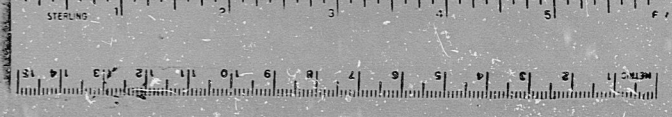
FF126510

PRC APERTURE CARD

16X

I certify that the microfilm image contained on this microform was made in the normal and regular course of business. This is a true, full, correct and complete reproduction and replacement for all or part in lieu of original documents owned by the Bechtel group of companies.

DANNY 2-16-83 Camera Type MRG1



RIDS

8305250039

