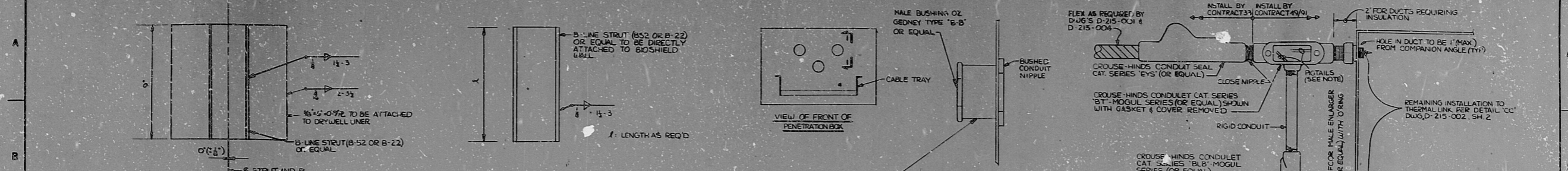


14 13 12 11 10 9 8 7 6 5 4 3 2 1



NOTES:

- SUPPORTS TO BE PLACED ON 3'-0" MAX. SPACING
- CLAMPS PER DWG. 55-215-005 SH.4 TABLE 2
- FOR CONDUIT ATTACHMENT TO STRUT SEE DETAIL 'A', DWG. 55-215-005 SH.3
- THIS SUPPORT IS FOR SINGLE CONDUIT ONLY.
- R. MATL. TO BE ASTM A36 STEEL WITH THE 'S' REQUIREMENT OR ASTM A516 GR. 70

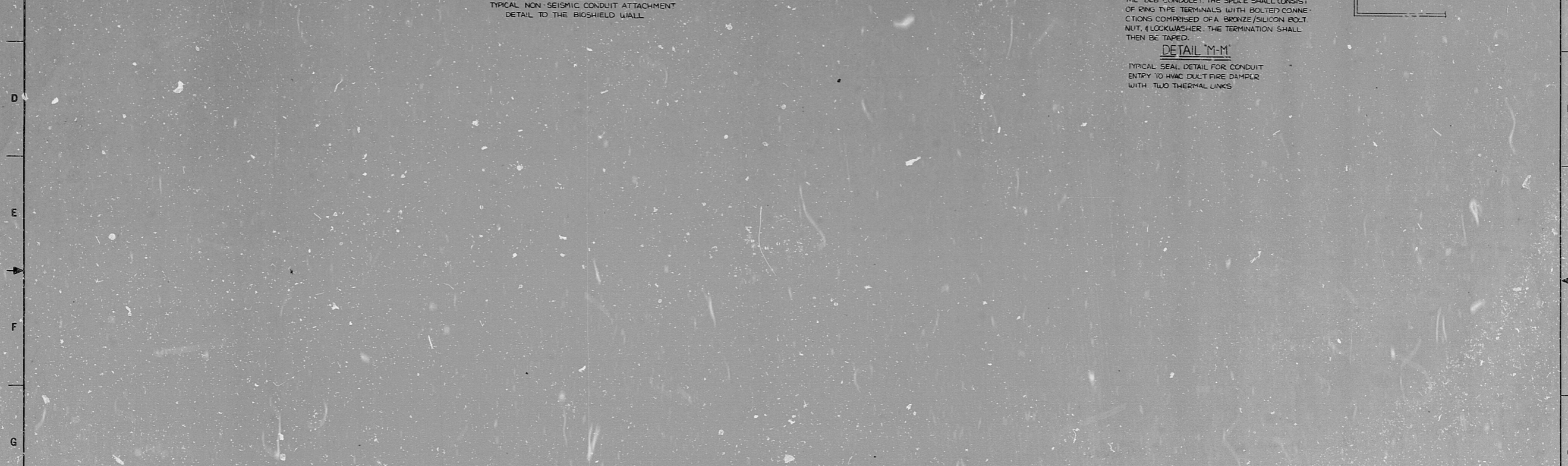
NOTES:

- SUPPORTS TO BE PLACED ON 10'-0" MAX. SPACING
- STRUT MAY BE CURVED, IF REQ'D. FOR VERTICAL CONDUIT RUNS
- CLAMPS TO BE PER DWG. 55-215-005 SH.4 TABLE 2, WHERE CURVED STRUT HAS BEEN USED, R-LINE CLAMPS B-2009 (1/2") THRU B-2017 (1/4") (AS APPLICABLE) MAY BE USED
- FOR CONDUIT ATTACHMENT OF STRUT, SEE DETAIL 'A', DWG. 55-215-005 SH.3

DETAIL L-L
TYPICAL METHOD OF CABLE ENTRANCE INTO LOW VOLTAGE ELECTRICAL PENETRATION BOXES FROM CABLE TRAYS

NOTE: WHEN PIGTAIL FROM LOWER THERMAL LINK IS TOO SHORT TO REACH 3rd CONDULET, AN EXTENSION SHALL BE ADDED BY SP-33 BY SPLICING INSIDE THE 'BLB' CONDULET. THE SPLICE SHALL CONSIST OF RING TYPE TERMINALS WITH BOLTED CONNECTIONS COMPRISED OF A BRONZE/SILICON BOLT NUT, 4 LOCKWASHER, THE TERMINATION SHALL THEN BE TAPED.

DETAIL M-M
TYPICAL SEAL DETAIL FOR CONDUIT ENTRY TO HVAC DUCT FIRE DAMPER WITH TWO THERMAL LINKS



REV-PER ECN 449133-1346
4681-32-1402-4
RD. 114572

NUCLEAR SAFETY RELATED		NO	DATE	BY	CHKD	APPROVAL
REVISIONS						
9-26-81	5249-91	CONSTRUCTION	5033-34			
LIMITED CONSTRUCTION: AS NOTED						
PRELIMINARY NOT FOR CONSTRUCTION						
BIDDING PURPOSES						
DATE	RELEASED FOR	ENGR.				
THE CLEVELAND ELECTRIC ILLUMINATING COMPANY						
FERRY NUCLEAR POWER PLANT UNITS 1 & 2						
ELECTRICAL						
CONDUIT LAYOUTS						
DETAILS						
READING	GILBERT ASSOCIATES, INC.					
ENGINEERS AND CONSULTANTS						
DRAWING APPROVALS						
DATE	BY	CHKD	BY	CHKD	BY	APPROVAL
10/2/81	JTB					
10/2/81	JTB					
10/2/81	JTB					
SCALE	NONE					
W.D.	04	4549	0-215-002	REV		
NO.	04549-200					

RIDS

812030201

