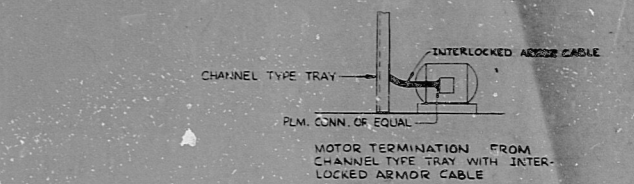
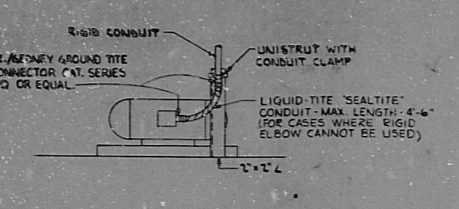
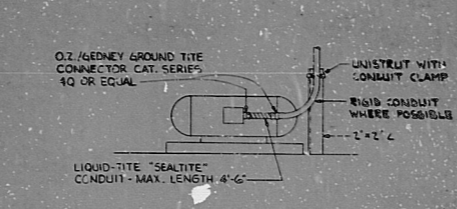
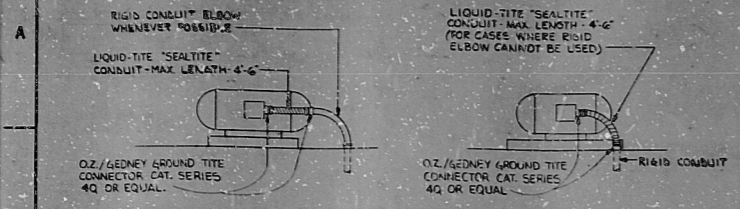


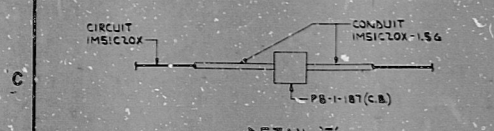
14 13 12 11 10 9 8 7 6 5 4 3 2 1



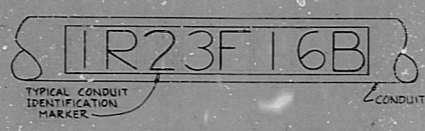
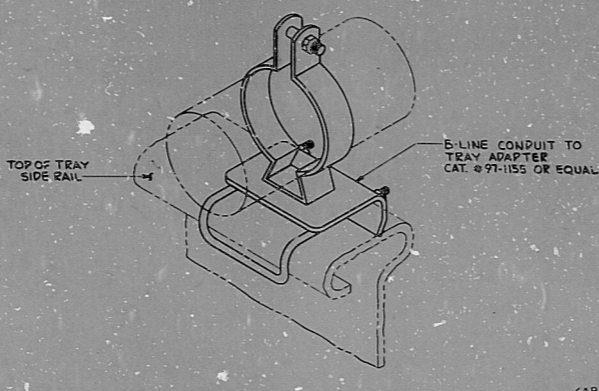
**DETAIL A**  
MOTORS & OTHER MISC. ELECTRICAL EQPT.  
TERMINATIONS FROM EMBEDDED CONDUIT  
SEE NOTES 31 & 34, DWG. D-215-001  
NON-SEISMIC INSTALLATIONS ONLY

**DETAIL B**  
MOTORS & OTHER MISC. ELECTRICAL EQPT.  
TERMINATIONS FROM OVERHEAD CONDUIT  
SEE NOTES 31 & 34, DWG. D-215-001  
NON-SEISMIC INSTALLATIONS ONLY

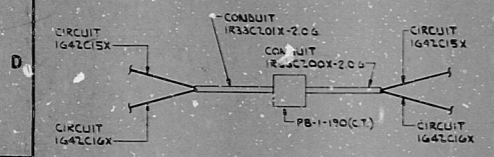
**DETAIL D**



**DETAIL E**  
SEE NOTE 9, DWG. D-215-001

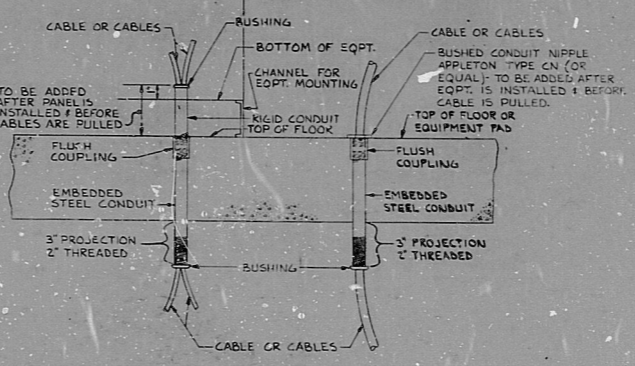


**DETAIL G**  
TYPICAL CONDUIT MARKER  
SEE NOTE 28, DWG. D-215-001

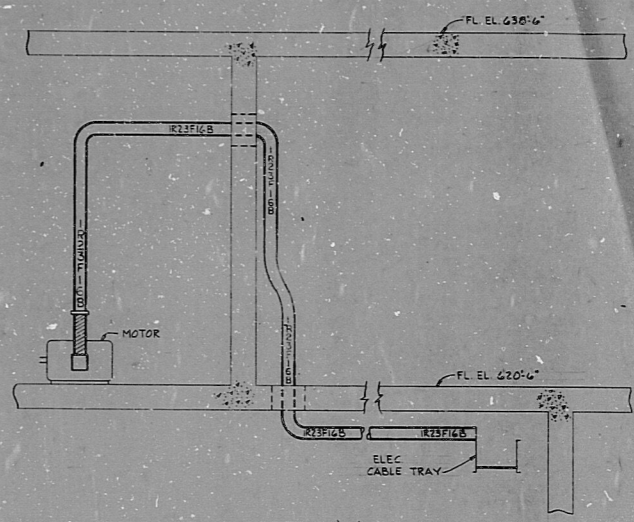


**DETAIL J**  
SEE NOTE 10, DWG. D-215-001

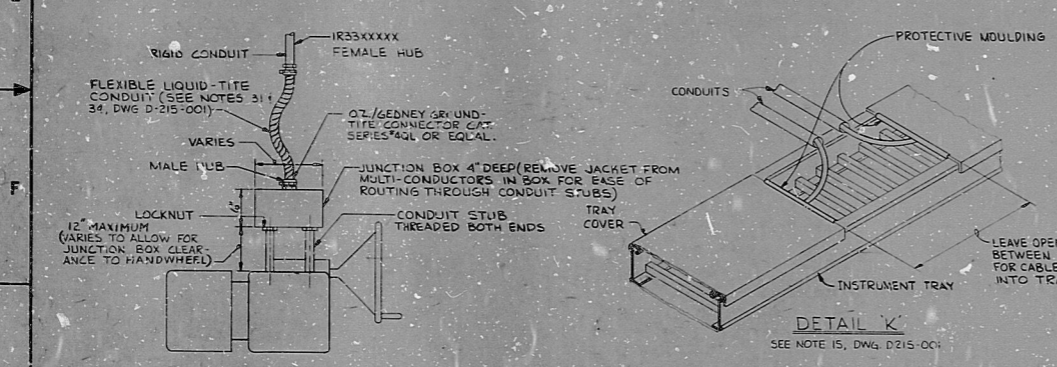
**DETAIL F**  
NON-SEISMIC INSTALLATIONS ONLY



**DETAIL L**  
TYPICAL FOR CHANNEL  
MOUNTED EQUIPMENT TYPICAL FOR PAD  
MOUNTED EQUIPMENT



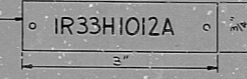
**DETAIL H**  
TYPICAL CONDUIT MARKER  
PLACEMENTS  
SEE NOTE 28, DWG. D-215-001



**DETAIL K**  
SEE NOTE 15, DWG. D-215-001

**DETAIL M**  
TYPICAL METHOD FOR TERMINATING  
CONDUIT TO A MOTOR OPERATED VALVE  
BEING FED WITH A R33 CONDUIT

APPROXIMATE DIMENSIONS 3/4" x 3" MIN. WITH  
3/16" CHARACTERS. COLOR CODING TO BE  
IN ACCORDANCE WITH STANDARDS  
DEFINED IN DWG. D-214-005. TAG  
MATERIALS TO BE LAMINATED ANODIZED  
ALUMINUM OR APPROVED EQUAL



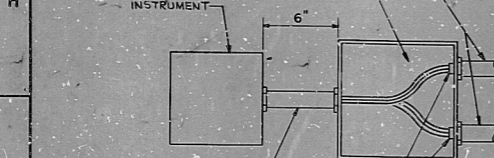
REMOVE JACKET FROM MULTI-  
CONDUCTOR CABLE FOR ROUTING  
OF SINGLE CONDUCTORS  
THROUGH JUNCTION BOX AND  
CONDUIT TO INSTRUMENT

RIGID CONDUIT SIZE VARIES  
(IDENT. NO. ASSIGNED ON  
INDIVIDUAL CONDUIT LAYOUT DWG.)

GALVANIZED MASONRY NAILS OR  
APPROVED EQUAL SHALL BE USED TO  
FASTEN TAGS TO FINISHED CONCRETE

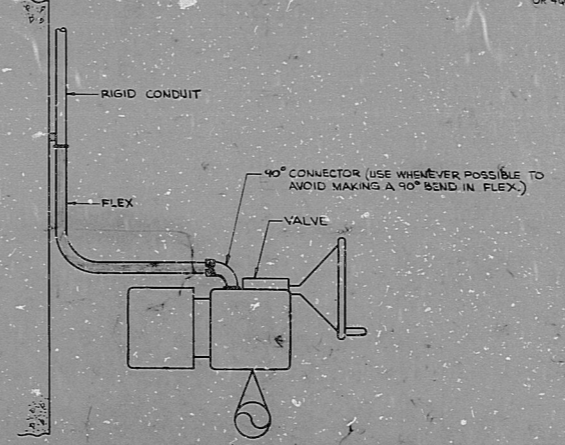
TAGS TO BE PLACED ABOVE INDIVIDUAL  
CONDUITS AT ALL ENTRY AND EXIT  
POINTS PRIOR TO PULLING ANY CABLE.  
WHERE INSTALLATION ABOVE CONDUIT  
IS NOT POSSIBLE, INSTALL TAGS AS  
SHOWN ON DETAILS S, A, & B ON  
DWG. D-215-002, SHEET 1.  
IF A BOX IS TO BE INSTALLED OVER  
THE DUCTS, THE TAGS SHALL BE  
INSTALLED INSIDE THE BOX.

**DETAIL Q**  
MARKER REQUIREMENTS FOR  
UNDERGROUND AND EMBEDDED CONDUITS

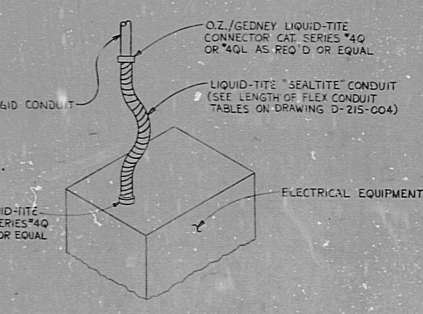


**DETAIL P**

3/4" DIA. RIGID CONDUIT (FIELD  
INSTALLED - NO IDENT.  
NO. ASSIGNED)



**DETAIL R**



**DETAIL N**  
ELECTRICAL EQUIPMENT REQUIRING  
"SEALITE" FLEXIBLE CONDUIT TERMINATION  
SEE NOTES 31 & 34, DWG. D-215-001  
NON-SEISMIC INSTALLATIONS ONLY

- NOTES:-
1. FOR NOTES, REFERENCES, AND LEGEND, SEE DWG. D-215-001.
  2. CONDUIT SYMBOLS AND CHARACTERS SHOWN ON THIS DRAWING ARE HYPOTHETICAL AND ARE TO BE USED FOR AN EXAMPLE OF ARRANGEMENT ONLY.

NUCLEAR SAFETY RELATED

TERA  
APERTURE  
CARD

NO.	DATE	BY	CHKD	APPROVAL
1				
2				
3				
4				
5				
6				
7				
8				
9				
10				

CONSTRUCTION		APPROVAL	
DATE	RELEASED FOR ENGR.	DATE	APPROVED
THE CLEVELAND ELECTRIC ILLUMINATING COMPANY			
PERRY NUCLEAR POWER PLANT UNITS 1 & 2			
ELECTRICAL CONDUIT LAYOUT			
DETAILS			
GILBERT ASSOCIATES, INC.			
ENGINEERS AND CONSULTANTS			
NO.	04	4545	D-215-002
NO.	04543-00	DRAWING NUMBER	
			SHEET



RIDS

811203097

