

34"

34"

22"

22"

17"

17"

11"

11"

8.5"

8.5"

8.5"

8.5"

11"

11"

17"

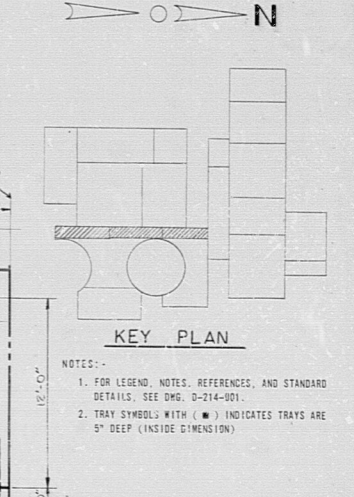
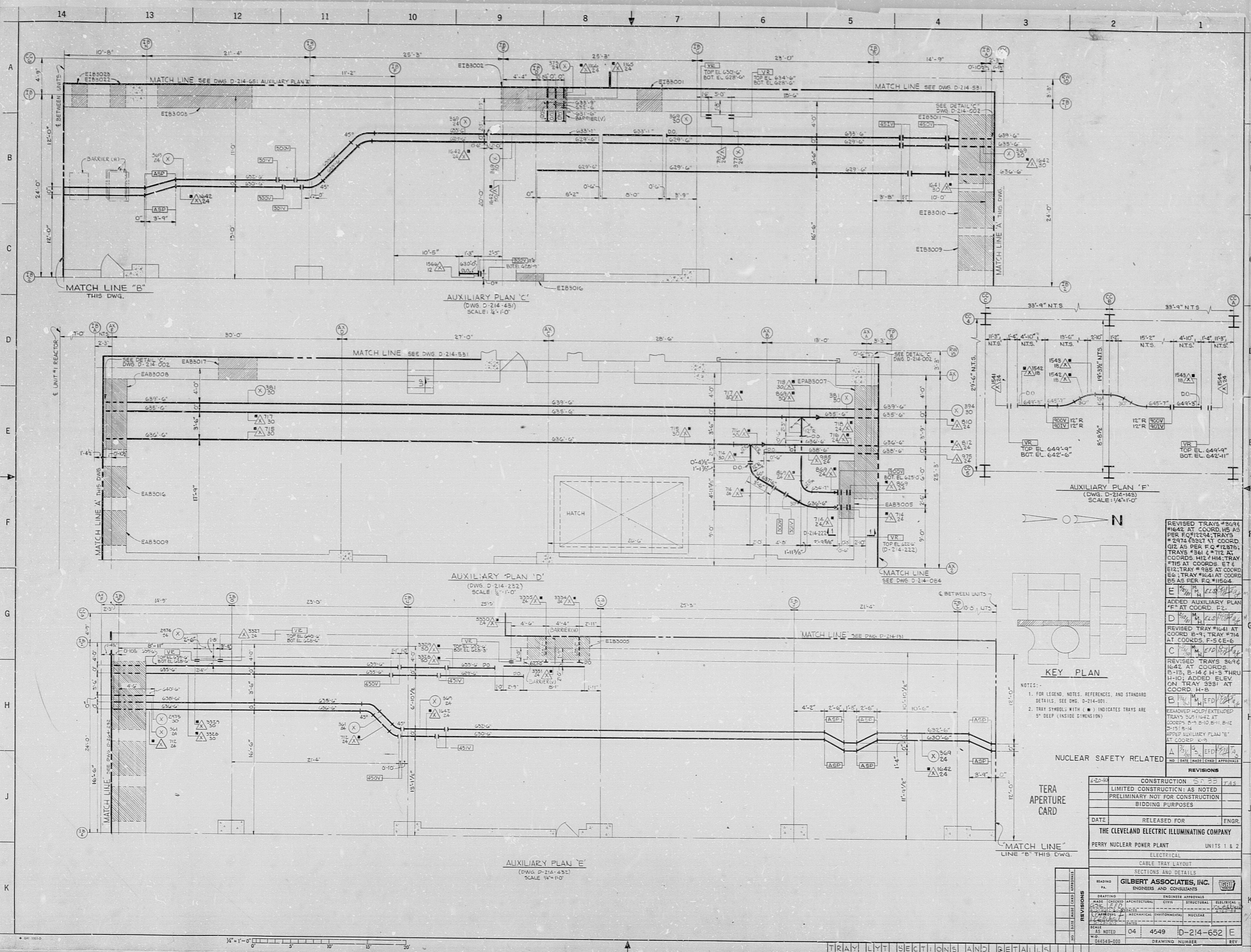
17"

22"

22"

34"

34"



- NOTES:
- FOR LEGEND, NOTES, REFERENCES, AND STANDARD DETAILS, SEE DWG. D-214-001.
 - TRAY SYMBOLS WITH (X) INDICATES TRAYS ARE 5" DEEP (INSIDE DIMENSION).

NUCLEAR SAFETY RELATED

TERA APERTURE CARD

MATCH LINE LINE "B" THIS DWG.

REVISED TRAYS #6416 #1642 AT COORD. H-5 AS PER FQ #1234; TRAYS #2374 #3321 AT COORD. G-12 AS PER FQ #1237; TRAYS #3616 #712 AT COORDS. H-12 / H-14 TRAY #715 AT COORDS. E-7; E-12; TRAY #885 AT COORD. E-6; TRAY #1641 AT COORD. B-5 AS PER FQ #11604

ADDED AUXILIARY PLAN #F* AT COORD. E-2.

REVISED TRAY #1641 AT COORD. B-9; TRAY #714 AT COORDS. F-4; E-6

REVISED TRAYS #6416 #1642 AT COORDS. B-13, B-14 C H-5 THRU H-10; ADDED ELEV. ON TRAY #331 AT COORD. H-8

REMOVED HOLD EXTENDED TRAYS #1642 AT COORDS. B-10, B-11, B-12, B-13, B-14

ADDED AUXILIARY PLAN #E* AT COORD. E-3

REMOVED HOLD EXTENDED TRAYS #1642 AT COORDS. B-10, B-11, B-12, B-13, B-14

ADDED AUXILIARY PLAN #E* AT COORD. E-3

REVISIONS	
1	CONSTRUCTION
2	LIMITED CONSTRUCTION; AS NOTED
3	PRELIMINARY NOT FOR CONSTRUCTION BIDDING PURPOSES
DATE RELEASED FOR ENGR.	
THE CLEVELAND ELECTRIC ILLUMINATING COMPANY	
PERRY NUCLEAR POWER PLANT UNITS 1 & 2	
ELECTRICAL	
CABLE TRAY LAYOUT	
SECTIONS AND DETAILS	
DRAWING NO. GILBERT ASSOCIATES, INC. ENGINEERS AND CONSULTANTS	
DRAWING NO. 04 4549 D-214-652 E	
DRAWING NUMBER	

TRAY LYT SECTIONS AND DETAILS

RIDS

8112030192

