

DISTRIBUTION

VENDOR	NO.	DATE
CLIENT	52	1/22
FIELD	20	1/22
EE		
CIVIL		
ELECT.		
PLT. DESI.		
MECH.		
COR. BYE.		
ARCH.		
PURCH.		
EXPED.		
INSPECT		
SCHED.		
START-UP	1A	2-14

RECORD 1A-2-14

BECHTEL
SAN FRANCISCO

APPROVED DRAWING
REVIEW
CHECKED BELOW

NO COMMENT
NO CHANGE
NO CORRECTION
NO ADDITION
NO DELETION
NO REVISION
NO CANCELLATION
NO REWORK
NO REDESIGN
NO RECALCULATION
NO RECONSTRUCTION
NO RECONSTRUCTION
NO RECONSTRUCTION

DATE: 1/22/52
BY: [Signature]
CHECKED BY: [Signature]

Y/N	Y/N	Y/N	Y/N	Y/N	Y/N	Y/N	Y/N	Y/N	Y/N
BC	6	Y	INCORP. FOR E-11387	YAK	JR	1/22/52			N
BC	3	Y	INCORP. FOR E-6756	YAK	JR	1/22/52			Y
Bechtel	Doc	Change	Bechtel Change to Supplier Documents	BY	CHK	ENG	Letter to Supplier		

Form No. 5-71 7/50

UNCONTROLLED DOCUMENT
FOR REFERENCE ONLY

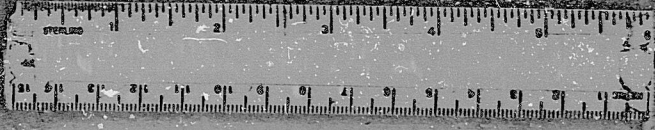
8856-M1-E21-20(5)-X12

FF126510

NO.	DATE	BY	CHKD BY	REVISION
1	1-20-52	JR	JR	1
2	1-22-52	JR	JR	2
3	1-22-52	JR	JR	3
4	1-22-52	JR	JR	4
5	1-22-52	JR	JR	5
6	1-22-52	JR	JR	6
7	1-22-52	JR	JR	7
8	1-22-52	JR	JR	8
9	1-22-52	JR	JR	9
10	1-22-52	JR	JR	10
11	1-22-52	JR	JR	11
12	1-22-52	JR	JR	12

791E419AE
SAN JOSE, CALIF.

P.R.C.
APERTURE
CARD



KIDS

8305250026

