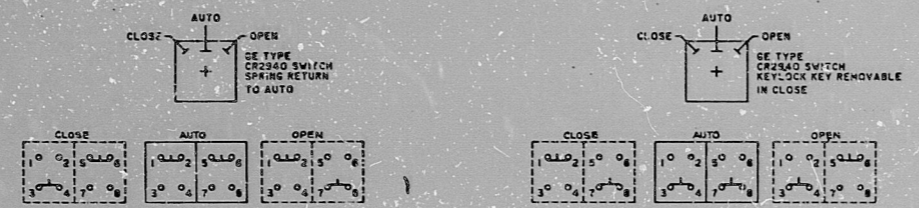


CONTACT NUMBER	VALVE POSITION		FUNCTION
	FULL OPEN	FULL CLOSED	
LS1			SP-PASS CKT
LS2			SPARE
LS3			IND. LP
LS4			OPEN LIMIT
LS5			SP-PASS CKT
LS6			CLOSE LIMIT
LS7			CL. CKT E IND. LP
LS8			CLOSE LIMIT
LS9			SPARE
LS10			SPARE
LS11			CLOSE LIMIT
LS12			OPEN LIMIT
LS13			CLOSE LIMIT
LS14			CLOSE LIMIT
LS15			SPARE
LS16			SPARE
LS17			SPARE
LS18			SPARE

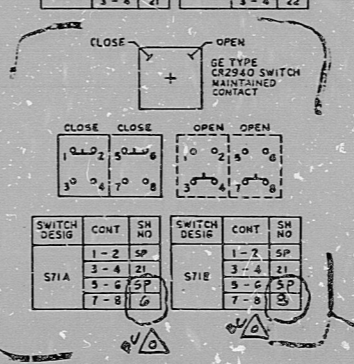
LIMITORQUE SWITCH NOTES:
 ROTORS 3 & 4 (CONTACTS LS9 THRU LS12 & LS13 THRU LS15) CAN BE SET AT VALVE POSITION FULL OPEN, FULL CLOSED OR ANY POSITION IN BETWEEN AS INDICATED BY POINTS A & B.
 TS17 - CLOSING TORQUE SWITCH INTERRUPTS CONTROL CIRCUIT IF MECHANICAL OVERLOAD OCCURS DURING CLOSING CYCLE OR FULLY CLOSED VALVES.
 TS18 - OPENING TORQUE SWITCH INTERRUPTS CONTROL CIRCUIT IF MECHANICAL OVERLOAD OCCURS DURING OPENING CYCLE.



SWITCH DESIG	CONT	SH NO	SWITCH DESIG	CONT	SH NO
S8A	1-2	17	S10	1-2	19
	3-4	17		3-4	19
	5-6	17		5-6	19
	7-8	17		7-8	19
	1-2	16		1-2	18
S11A	3-4	16	S11B	3-4	16
	5-6	16		5-6	16
	7-8	16		7-8	16
	1-2	17		1-2	19
S16A	3-4	17	S16B	3-4	19
	5-6	17		5-6	19
	7-8	17		7-8	19
	1-2	16		1-2	18
S24A	3-4	18	S24B	3-4	18
	5-6	18		5-6	18
	7-8	18		7-8	18
	1-2	16		1-2	18
S37A	3-4	16	S37B	3-4	18
	5-6	16		5-6	18
	7-8	16		7-8	18

SWITCH DESIG	CONT	SH NO	SWITCH DESIG	CONT	SH NO
S11A	1-2	16	S11B	1-2	18
	3-4	16		3-4	18
	5-6	16		5-6	18
	7-8	16		7-8	18

SWITCH DESIG	CONT	SH NO	SWITCH DESIG	CONT	SH NO
S6A	1-2	16	S70B	1-2	SP
	3-4	16		3-4	21
S6B	1-2	18			
	3-4	18			
S6C	1-2	18			
	3-4	18			
S6D	1-2	18	S72A	1-2	SP
	3-4	18		3-4	21
S15A	1-2	SP	S72B	1-2	SP
	3-4	17		3-4	21
S15B	1-2	SP	S72C	1-2	SP
	3-4	19		3-4	22
S14A	1-2	SP	S73B	1-2	SP
	3-4	5		3-4	22
S14B	1-2	SP			
	3-4	9			
S59	1-2	20	S75	1-2	SP
	3-4	20		3-4	22
S70A	1-2	SP	S76	1-2	SP
	3-4	21		3-4	22



SWITCH DESIG	CONT	SH NO	SWITCH DESIG	CONT	SH NO
S71A	1-2	SP	S71E	1-2	SP
	3-4	21		3-4	21
	5-6	SP		5-6	SP
	7-8	6		7-8	3

APFD DRAWING REVIEW
 COMMENTS AS CHECKED BELOW

NO COMMENTS
 COMMENTS AS INDICATED FOR AREAS OF INFORMATION AND USE ONLY. NO REPLY REQUIRED.
 COMMENTS AS INDICATED WHEN DIRECTLY AFFECTING BECHTEL RESPONSIBILITY. REPLY REQUIRED IF NOT INCORPORATED BY A/R/C.

FORWARDED BY: [Signature]
 DATE: 5/12/62
 REVIEWED BY: [Signature]
 DATE: [Signature]
 BECHTEL SAN FRANCISCO JOB NO. 8856

DISTRIBUTION JOB 8856

DEPT	QTY	DATE
CIVIL		
ELECTRICAL		
MECHANICAL		
PLANT DESIGN		
CONTROL SYS		
INSTRUM		
SCHEDULES		
O&M		
PURCHASING		
INSPECTION		
STARTUP		
SUPPLIER		
FIELD		
CLIENT		
RECORD		

PRC APERTURE CARD

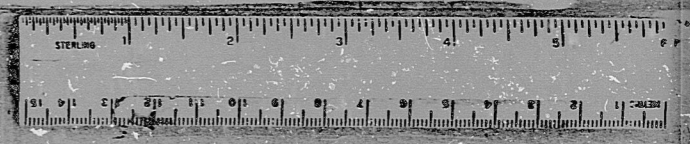
8856-MI-E11-66(23)-4

UNCONTROLLED DOCUMENT FOR REFERENCE ONLY

FF 124510

Y/N	Y/N	Y/N	Y/N	Y/N	Y/N	Y/N	Y/N	Y/N	Y/N
BC	Δ								
BC	Δ								
BC	Δ	4							
BC	Δ	4							

Bechtel Change to Supplier Documents BY CHK Des Supp ENG Proj Lead



RIDS

8305240650

