

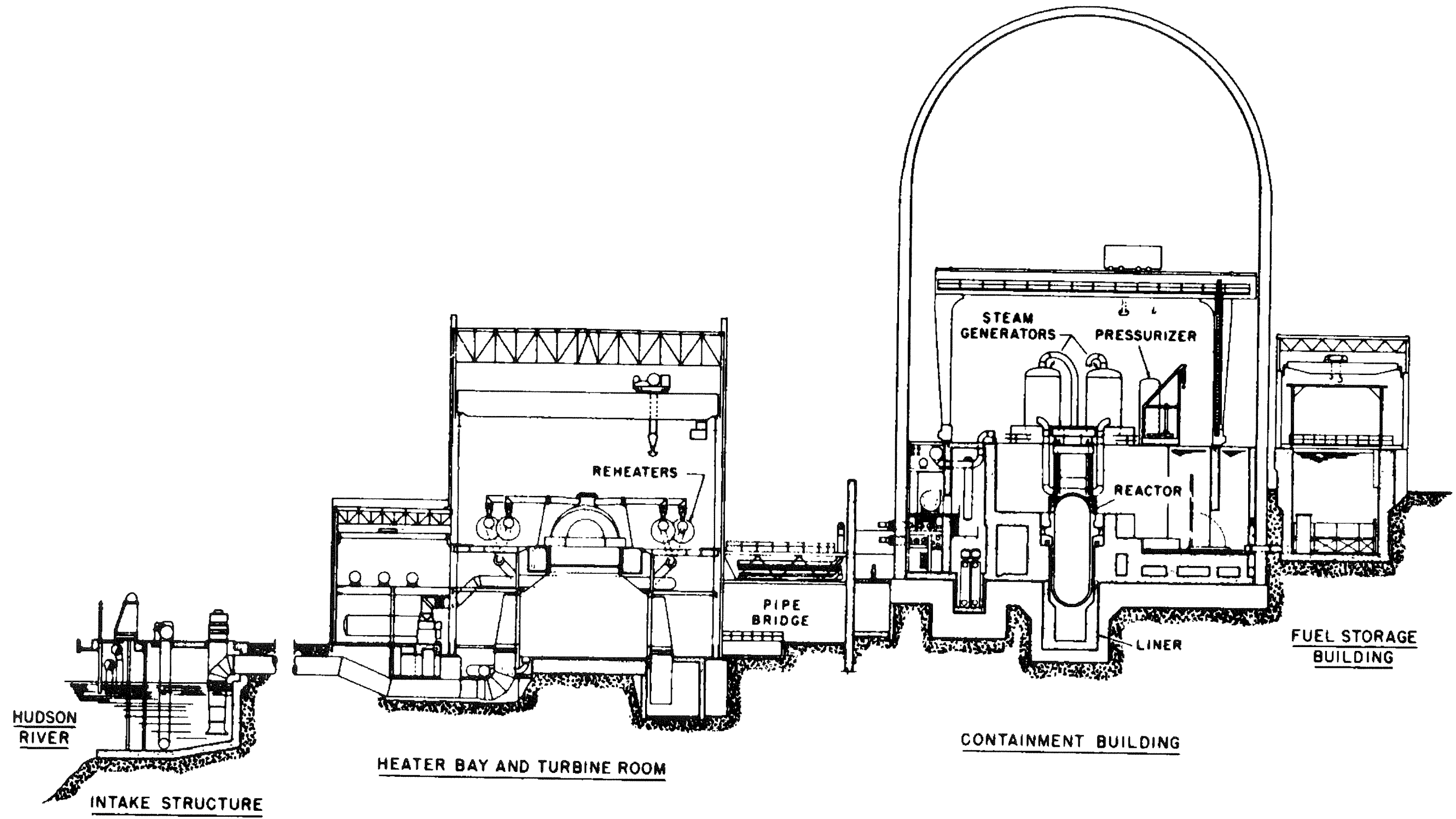
INDIAN POINT UNIT No. 2

UFSAR FIGURE 1.2-1

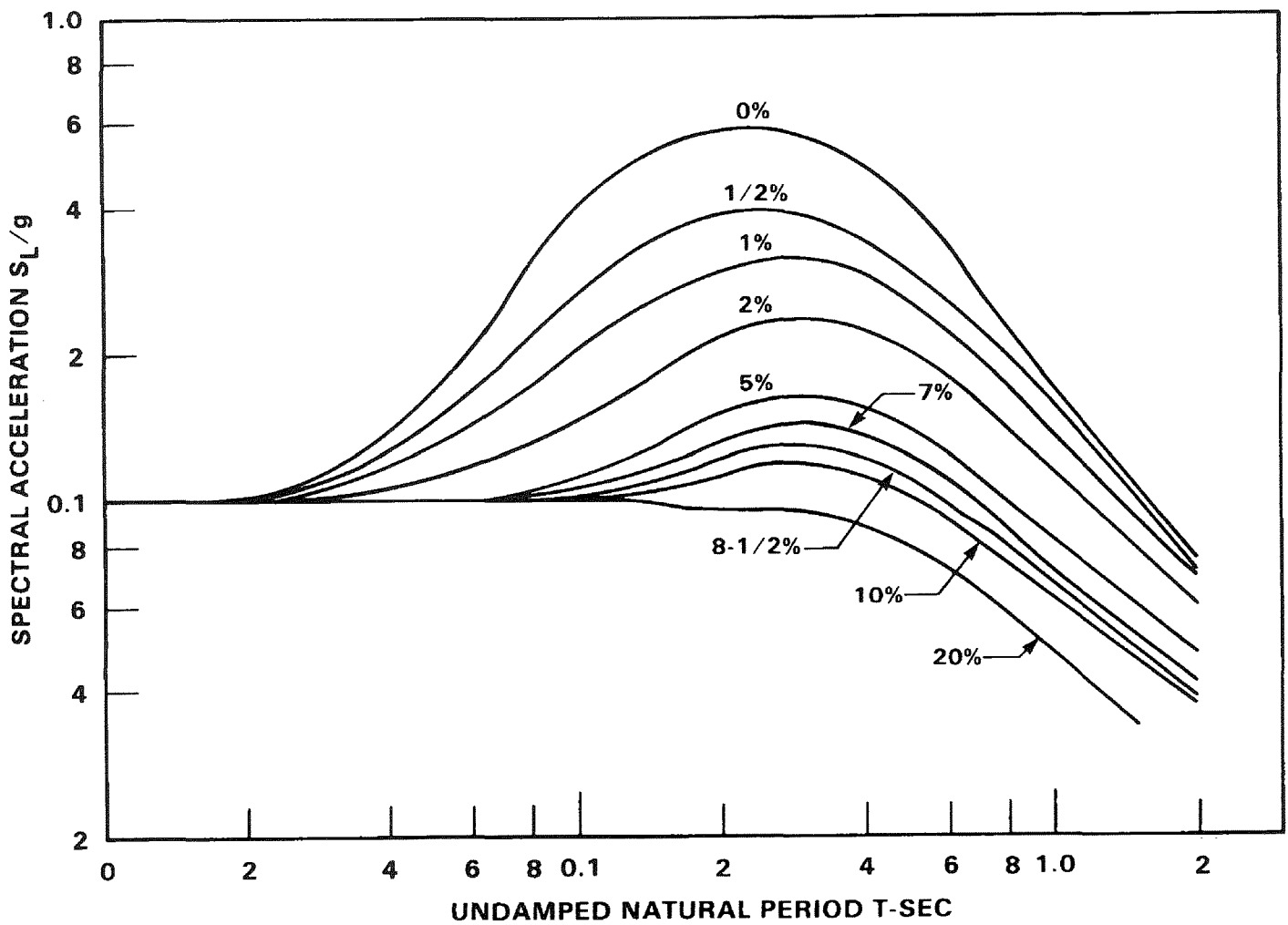
INDIAN POINT
NUCLEAR GENERATING STATION
UNITS 1 & 2

MIC. No. 1999MC3559

REV. No. 17A



INDIAN POINT UNIT No. 2	
UFSAR FIGURE 1.2-4	
CROSS SECTION OF PLANT	
MIC. No. 1999MC3561	REV. No. 17A



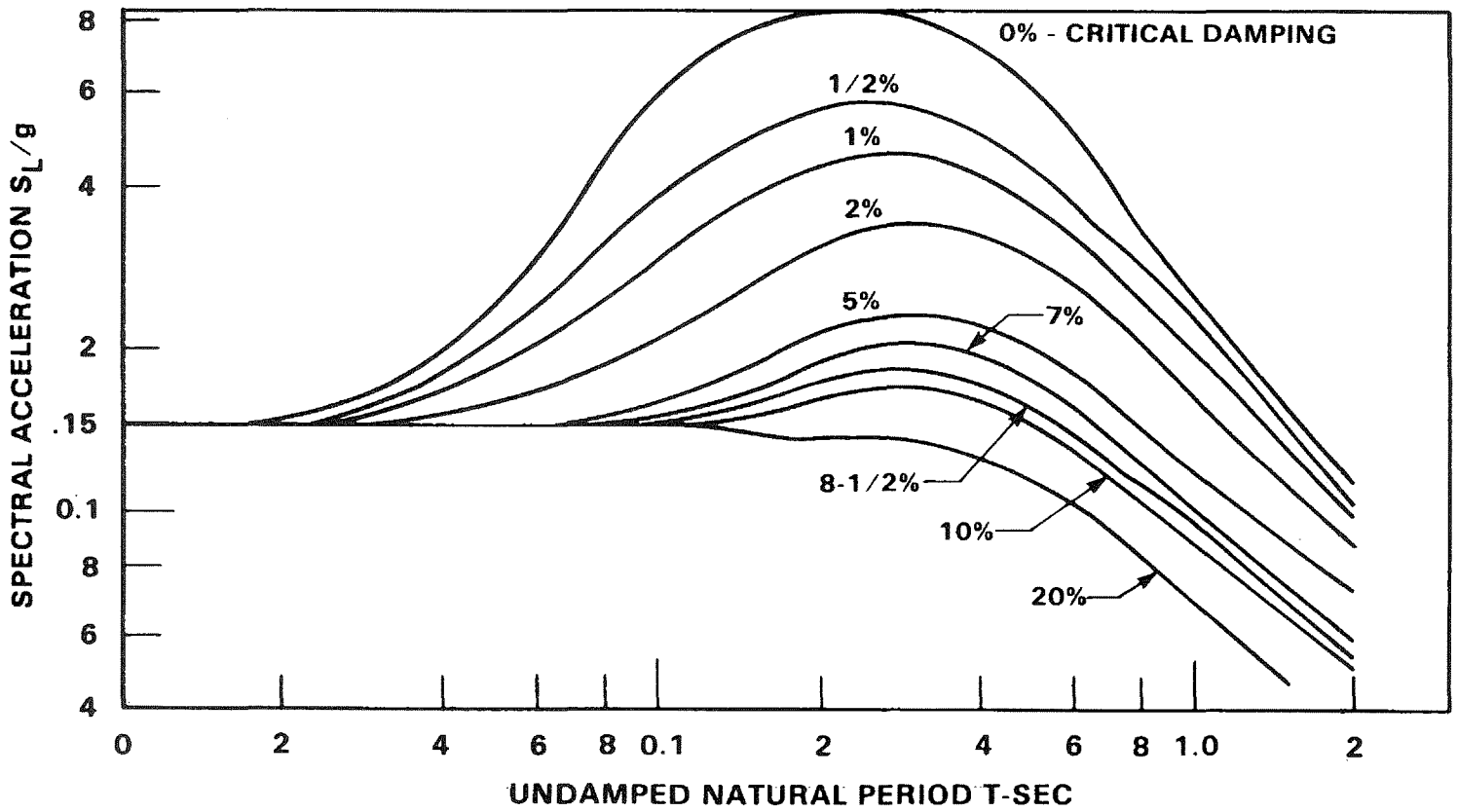
INDIAN POINT UNIT No. 2

UFSAR FIGURE 1.11-1

TEN PERCENT OF
GRAVITY RESPONSE
SPECTRA

MIC. No. 1999MC3562

REV. No. 17A



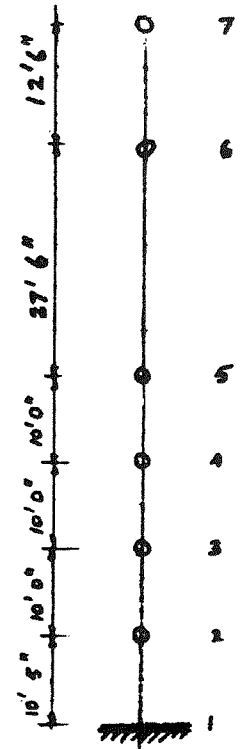
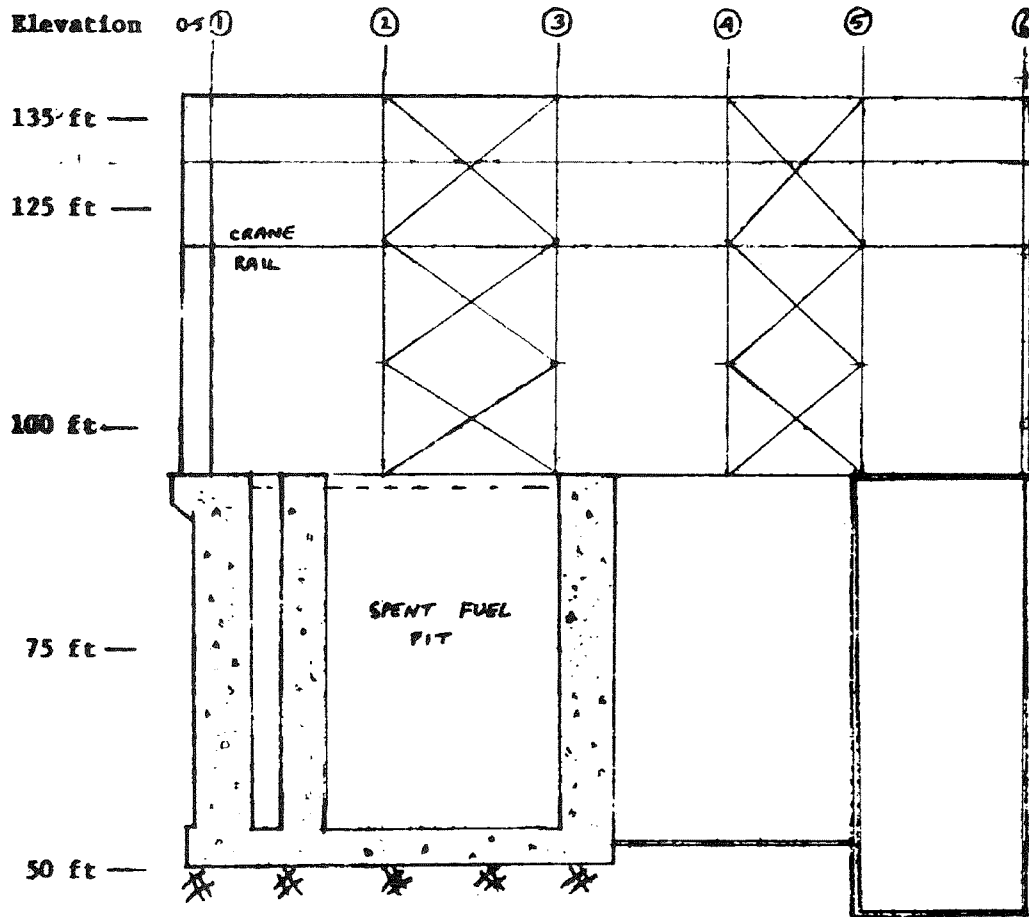
INDIAN POINT UNIT No. 2

UFSAR FIGURE 1.11-2

FIFTEEN PERCENT OF
GRAVITY RESPONSE
SPECTRA

MIC. No. 1999MC3563

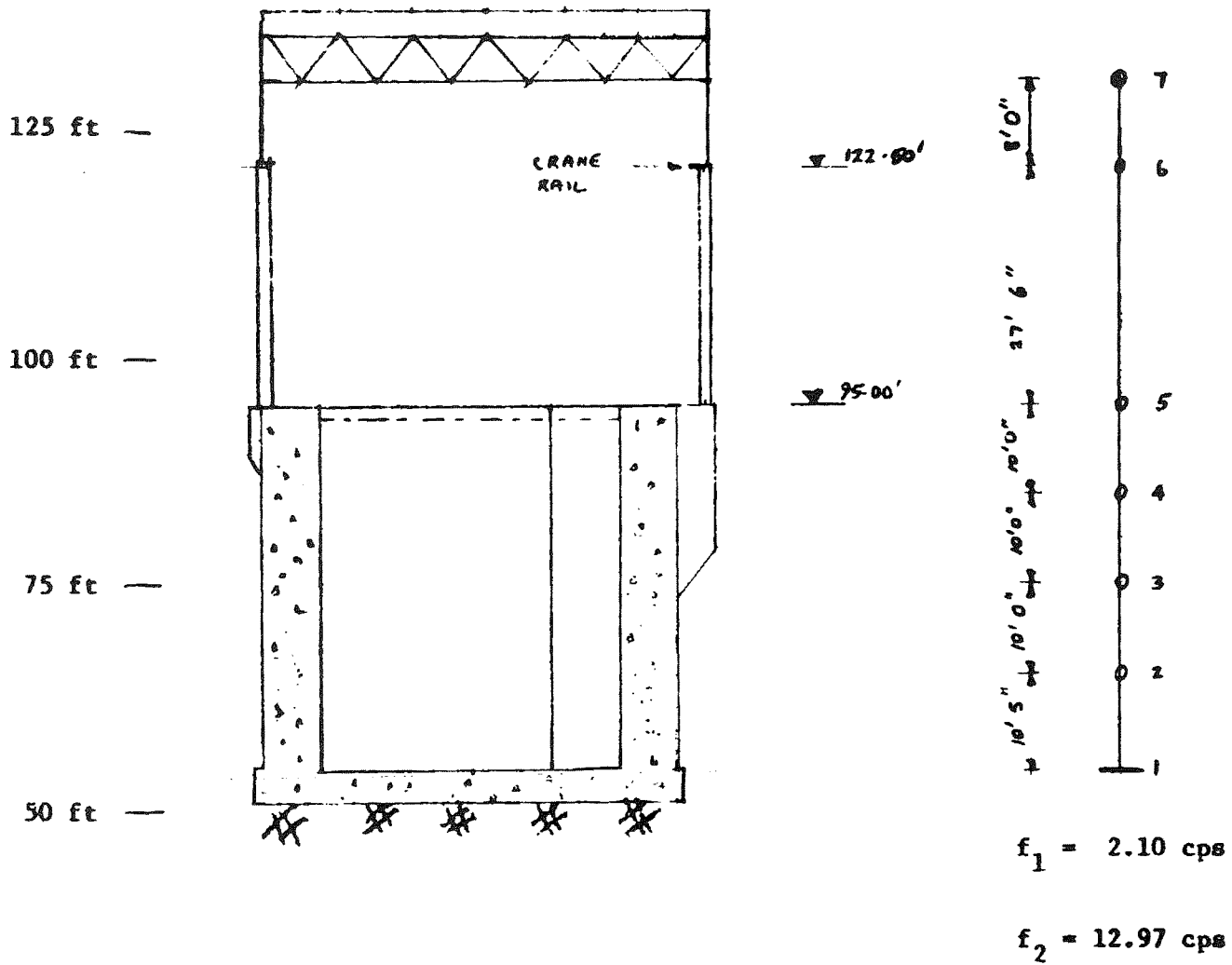
REV. No. 17A



$f_1 = 3.0$ cps
 $f_2 = 9.57$ cps

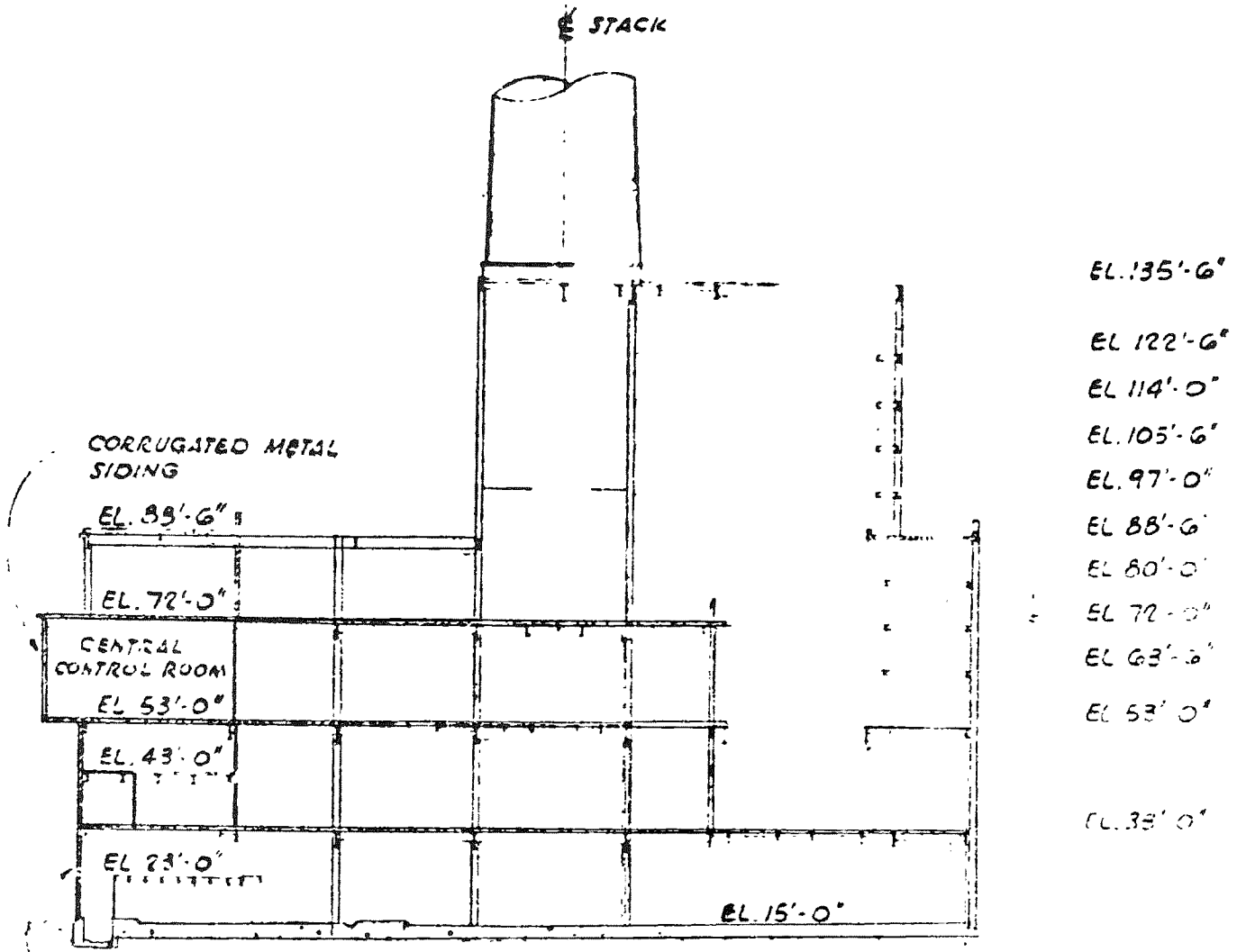
INDIAN POINT UNIT No. 2	
UFSAR FIGURE 1.11-3	
FUEL STORAGE BUILDING NORTH-SOUTH MODEL	
MIC. No. 1999MC3564	REV. No. 17A

Elevation



INDIAN POINT UNIT No. 2	
UFSAR FIGURE 1.11-4	
FUEL STORAGE BUILDING EAST-WEST MODEL	
MIC. No. 1999MC3565	REV. No. 17A

10 8.7 7.7 6.4 5 4.2 3.5 2.7 2 1



GLAZED BRICK

N-S SECTION

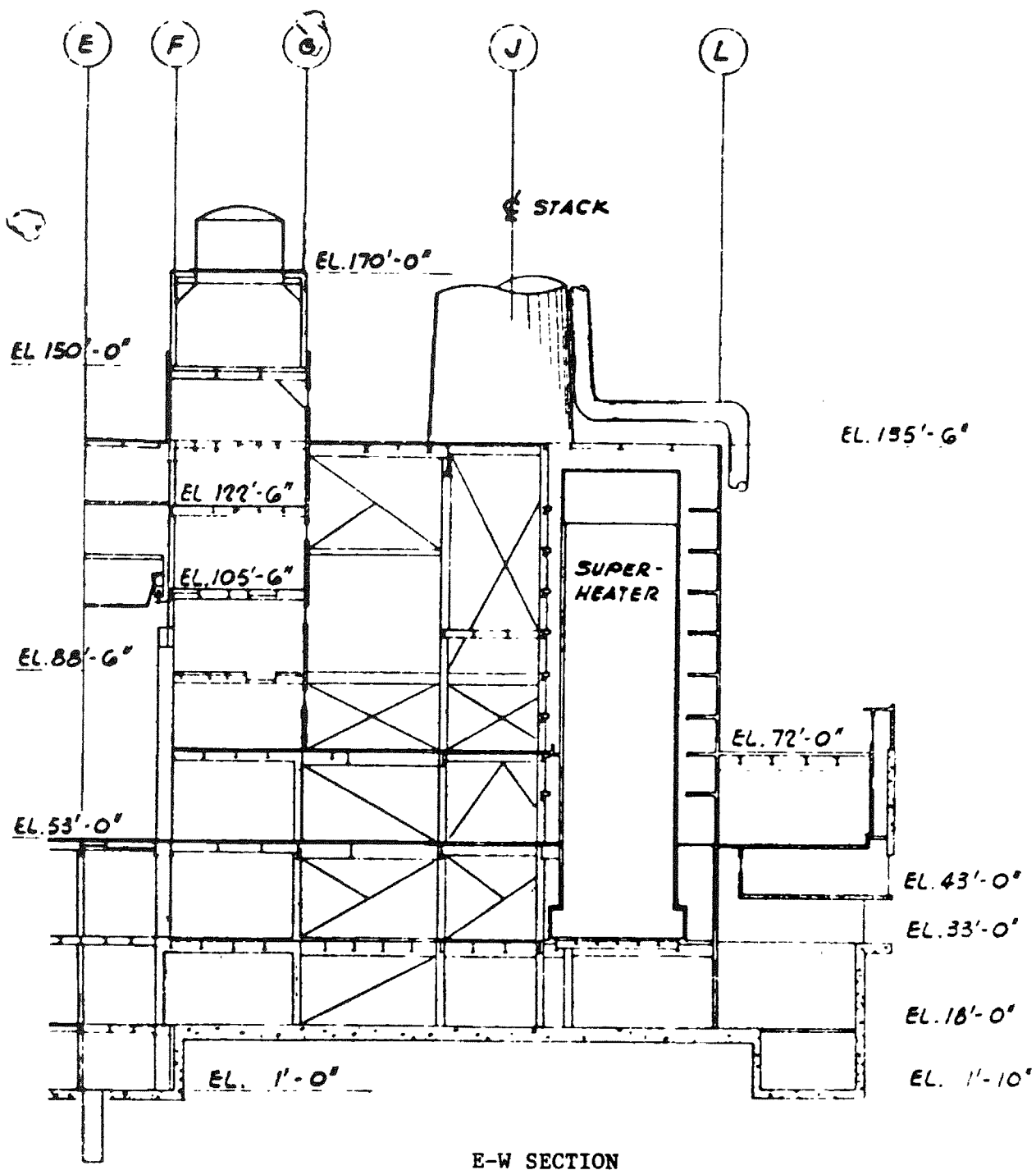
INDIAN POINT UNIT No. 2

UFSAR FIGURE 1.11-5

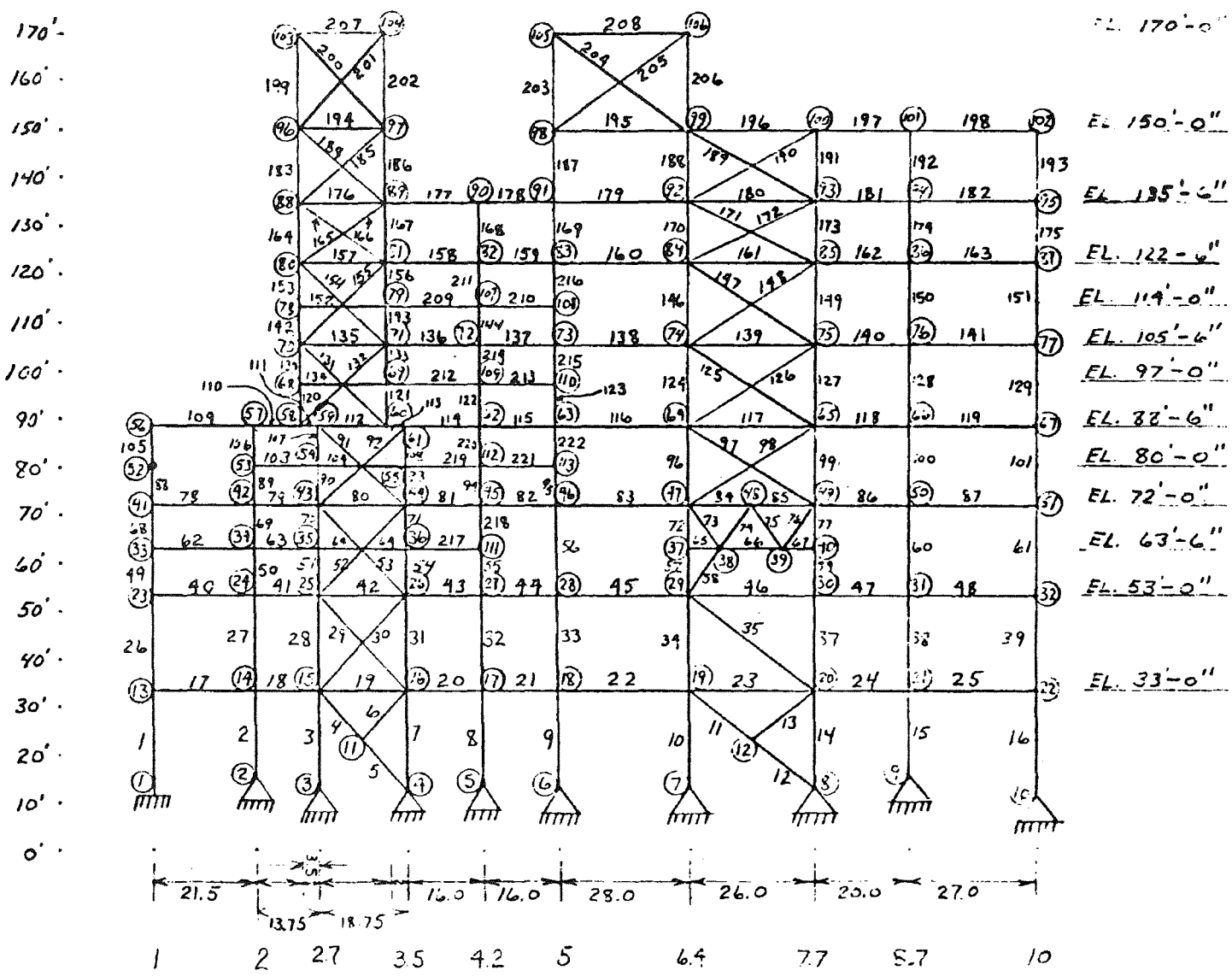
INDIAN POINT UNIT 1
SUPERHEATER BUILDING
NORTH-SOUTH SECTION

MIC. No. 1999MC3566

REV. No. 17A



INDIAN POINT UNIT No. 2	
UFSAR FIGURE 1.11-6	
INDIAN POINT UNIT 1 SUPERHEATER BUILDING EAST-WEST SECTION	
MIC. No. 1999MC3567	REV. No. 17A

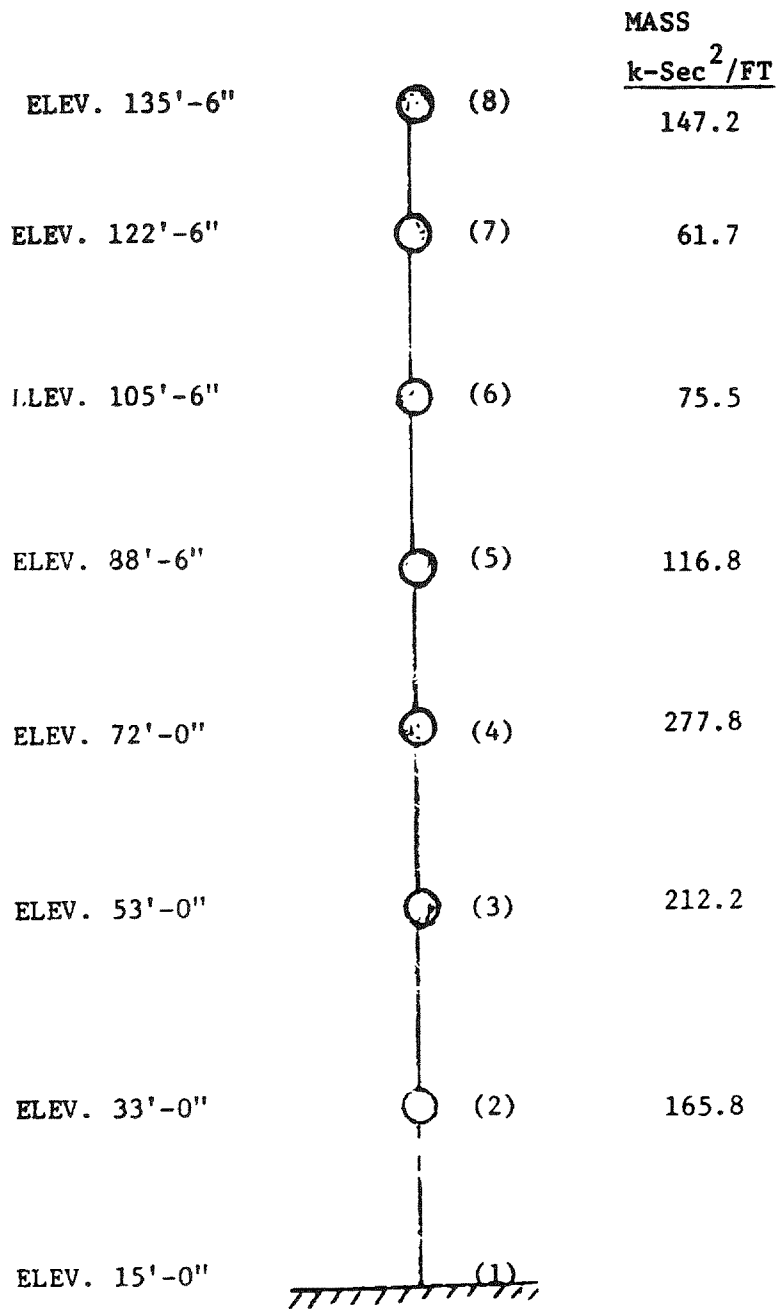


INDIAN POINT UNIT No. 2

UFSAR FIGURE 1.11-7

COLUMN LINE "G"

MIC. No. 1999MC3568	REV. No. 17A
---------------------	--------------



NOTE: Stack Lumped at Mass Point

Mode	CPS N-S Freq.	CPS E-W Freq.
1	0.72	0.95
2	1.58	2.07
3	3.48	4.07
4	4.65	5.18
5	6.0	7.0
6	7.15	8.0
7	8.25	9.7

NOTE: STIFFNESS MATRICES USED TO DEFINE THE STIFFNESS RELATIONSHIP BETWEEN MASS POINTS IN THE E-W AND N-S DIRECTION

INDIAN POINT UNIT No. 2

UFSAR FIGURE 1.11-8

REPRESENTATION OF LUMPED MASS MODEL
OF SUPERHEATER BUILDING USED IN
DYNAMIC ANALYSIS

MIC. No. 1999MC3569

REV. No. 17A