

6.0 ADMINISTRATIVE CONTROLS

6.1 RESPONSIBILITY

The Station Director shall be accountable for overall facility operation. In his absence, the Station Director shall designate, in writing, the individual to assume this responsibility.

6.2 ORGANIZATION

A. OFFSITE AND ONSITE ORGANIZATIONS

Onsite and offsite organizations shall be established for unit operation and corporate management, respectively. The onsite and offsite organizations shall include the positions for activities affecting the safety of the nuclear power plant.

1. Lines of authority, responsibility, and communication shall be established and defined for the highest management levels through intermediate levels to and including all operating organization positions. These relationships shall be documented and updated, as appropriate, in the form of organization charts, functional descriptions of departmental responsibilities and relationships, and job descriptions for key personnel positions, or in equivalent forms of documentation. These requirements shall be documented in Pilgrim Station Final Safety Analysis Report.
2. The Station Director shall be responsible for overall unit safe operation and shall have control over those onsite activities necessary for safe operation and maintenance of the plant.
3. The Senior Vice President - Nuclear shall have corporate responsibility for overall plant nuclear safety and shall take any measures needed to ensure acceptable performance of the staff in operating, maintaining, and providing technical support to the plant to ensure nuclear safety.
4. The individuals who train the operating staff and those who carry out health physics and quality assurance functions may report to the appropriate onsite manager; however, they shall have sufficient organizational freedom to ensure their independence from operating pressures.

B. FACILITY

1. Each on duty shift shall be composed of at least the minimum shift crew composition shown in Table 6.2-1.

6.0 ADMINISTRATIVE CONTROLS

2. When the unit is in an operational mode other than cold shutdown or refueling, a person holding a Senior Reactor Operator License shall be present in the control room at all times. In addition to this Senior Operator, a Licensed Operator or Senior Operator shall be present at the controls when fuel is in the vessel.
3. At least two Licensed Operators shall be present in the control room during reactor startup, scheduled reactor shutdown and during recovery from reactor trips.
4. An individual qualified in radiation protection procedures shall be on site when fuel is in the reactor.
5. ALL CORE ALTERATIONS performed while fuel is in the reactor vessel after the initial fuel loading shall be directly supervised by either a licensed Senior Reactor Operator or Senior Reactor Operator Limited to Fuel Handling who has no other concurrent responsibilities during this operation.
6. A Fire Brigade of 5 members including a Fire Brigade Leader shall be maintained on site at all times. This excludes 3 members of the minimum shift crew necessary for safe shutdown and any personnel required for other essential functions during a fire emergency.
7. The Technical Section Manager, Chief Operating Engineer, Nuclear Watch Engineers, and Nuclear Operations Supervisors shall hold a Senior Reactor Operator License. The Nuclear Plant Reactor Operators shall hold a Reactor Operator License.

6.3 FACILITY STAFF QUALIFICATIONS

The qualifications with regard to educational and experience backgrounds of the facility staff at the time of appointment to the active position shall meet the requirements as described in the American National Standards Institute N18.1-1971, "Selection and Training of Personnel for Nuclear Power Plants." In addition, the individual performing the function of Radiation Protection Manager shall meet or exceed the qualifications of Regulatory Guide 1.8, September, 1975.

6.4 TRAINING

A retraining and replacement training program for the facility staff shall be maintained under the direction of the Nuclear Training Department Manager. The training programs for the licensed personnel shall meet or exceed the requirements and recommendations of Section 5.5 of ANSI N18.1-1971 and Appendix A of 10CFR Part 55. The training programs for the Fire Brigade shall meet or exceed the requirements of NFPA Standard No. 27-1975 "Private Fire Brigade". Fire Protection Training sessions will be held quarterly.

This Page Intentionally Left Blank

This Page Intentionally Left Blank

ATTACHMENT C

6.0 ADMINISTRATIVE CONTROLS

6.1 RESPONSIBILITY

The Station Director shall be accountable for overall facility operation. In his absence, the Station Director shall designate, in writing, the individual to assume this responsibility.

6.2 ORGANIZATION

A. OFFSITE

The Company organization for station management and technical support shall be as shown on Figure 6.2-1.

B. FACILITY

The Facility organization shall be as shown on Figure 6.2-2 and:

1. Each on duty shift shall be composed of at least the minimum shift crew composition shown in Table 6.2-1.
2. When the unit is in an operational mode other than cold shutdown or refueling, a person holding a Senior Reactor Operator License shall be present in the control room at all times. In addition to this Senior Operator, a Licensed Operator or Senior Operator shall be present at the controls when fuel is in the vessel.
3. At least two Licensed Operators shall be present in the control room during reactor startup, scheduled reactor shutdown and during recovery from reactor trips.
4. An individual qualified in radiation protection procedures shall be on site when fuel is in the reactor.
5. ALL CORE ALTERATIONS performed while fuel is in the reactor vessel after the initial fuel loading shall be directly supervised by either a licensed Senior Reactor Operator or Senior Reactor Operator Limited to Fuel Handling who has no other concurrent responsibilities during this operation.
6. A Fire Brigade of 5 members including a Fire Brigade Leader shall be maintained on site at all times. This excludes 3 members of the minimum shift crew necessary for safe shutdown and any personnel required for other essential functions during a fire emergency.

C. CHANGES TO THE ORGANIZATION

Changes may be made to the organization without prior license amendment provided that the NRC is notified in writing within 30 days and a revision to Section 6.2 is included in a subsequent license amendment request.

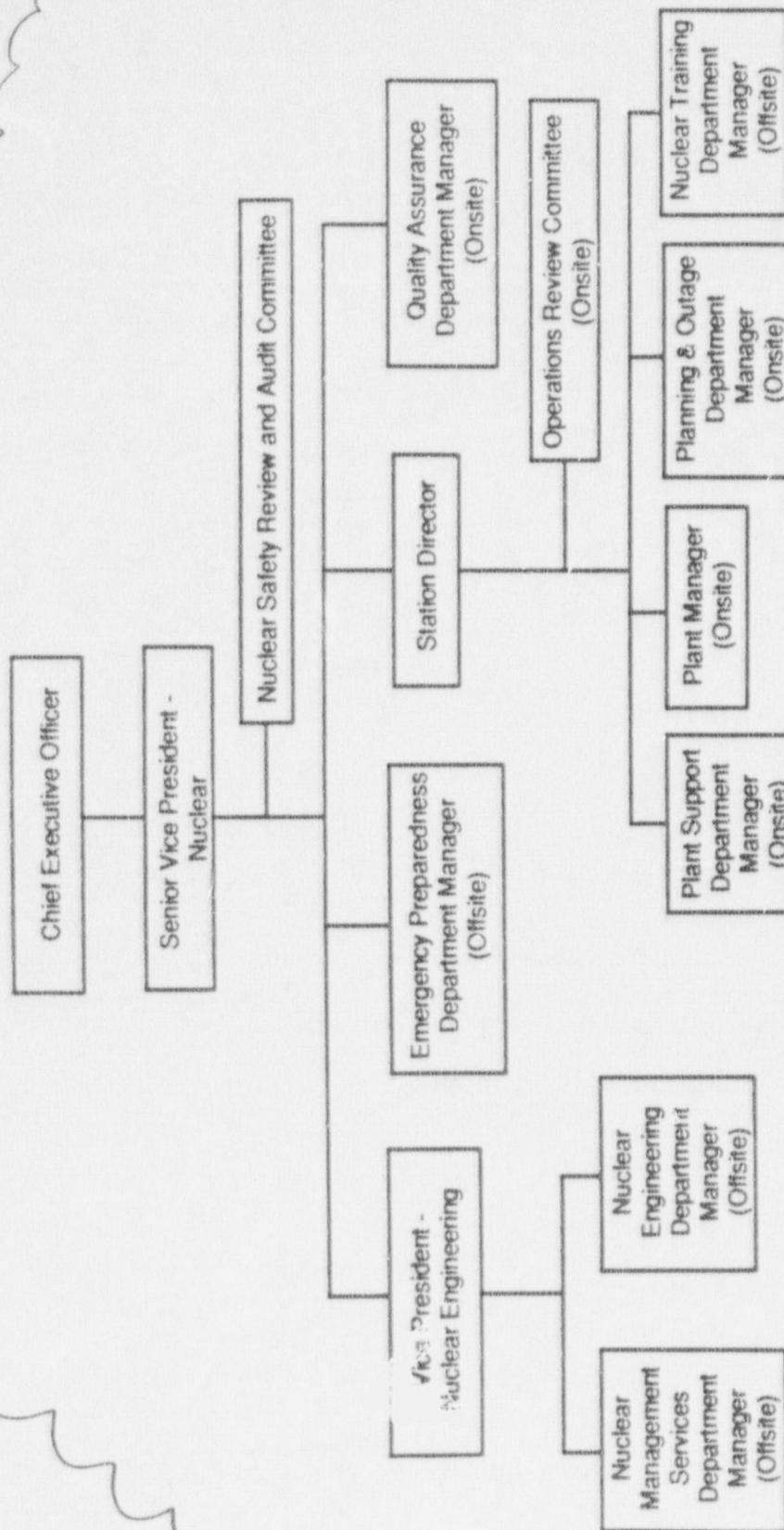
6.0 ADMINISTRATIVE CONTROLS

6.3 FACILITY STAFF QUALIFICATIONS

The qualifications with regard to educational and experience backgrounds of the facility staff at the time of appointment to the active position shall meet the requirements as described in the American National Standards Institute N18.1-1971, "Selection and Training of Personnel for Nuclear Power Plants." In addition, the individual performing the function of Radiation Protection Manager shall meet or exceed the qualifications of Regulatory Guide 1.8, September, 1975.

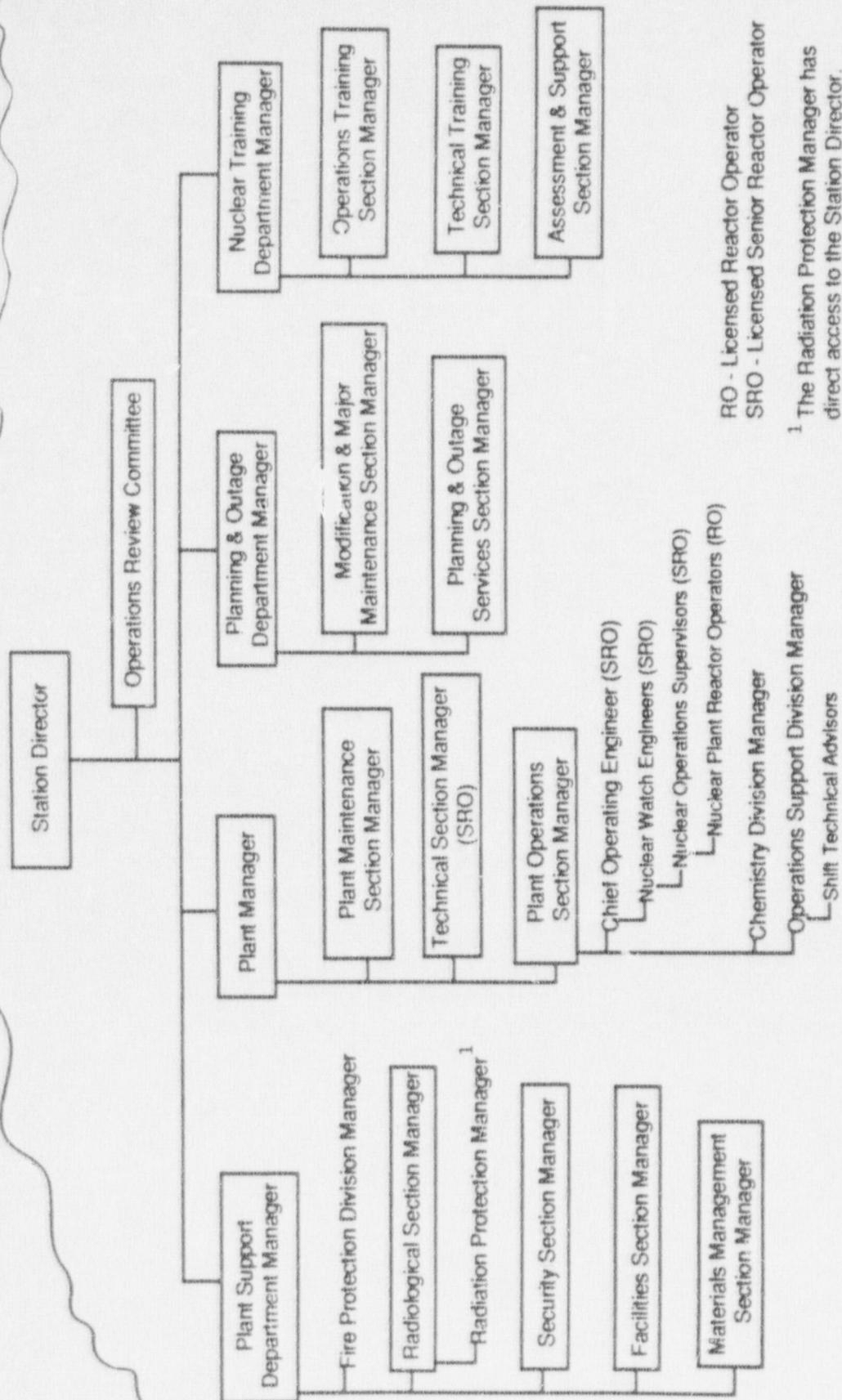
6.4 TRAINING

A retraining and replacement training program for the facility staff shall be maintained under the direction of the Nuclear Training Department Manager. The training programs for the licensed personnel shall meet or exceed the requirements and recommendations of Section 5.5 of ANSI N18.1-1971 and Appendix A of 10CFR Part 55. The training programs for the Fire Brigade shall meet or exceed the requirements of NFPA Standard No. 27-1975 "Private Fire Brigade". Fire Protection Training sessions will be held quarterly.



**Boston Edison Company
Organization for Management and Technical
Support of Pilgrim Station**

Figure 6.2-1



Pilgrim Station Organization
Figure 6.2-2