

Log # TXX-89429
File # 10010
829

TUELECTRIC

William J. Cahill, Jr.
Executive Vice President

June 30, 1989

U. S. Nuclear Regulatory Commission
Attn: Document Control Desk
Washington, D. C. 20555

SUBJECT: COMANCHE PEAK STEAM ELECTRIC STATION (CPSES)
DOCKET NOS. 50-445 AND 50-446
ADVANCE FSAR SUBMITTAL, FIGURE 9.4-3, TURBINE
BUILDING VENTILATION FLOW DIAGRAM

Gentlemen:

CPSES FSAR Amendment 76 was transmitted to the NRC by letter dated May 1, 1989 (TXX-89200); a description/justification for each change in Amendment 76 was transmitted under separate cover to the NRC and also dated May 1, 1989 (TXX-89201).

As part of Amendment 76, changes were to be made to Figure 9.4-3, Turbine Building Ventilation Flow Diagram. The revised Figure 9.4-3 was inadvertently omitted from Amendment 76, however a description/justification for each change to this figure was included in the Amendment 76 description/justification letter. (See Attachment 1 for a markup of the related changes.)

This letter provides an advance copy of Figure 9.4-3, as revised, along with related supporting documentation. The figure will be included in a future FSAR amendment.

In order to facilitate NRC staff review of the changes to Figure 9.4-3, the following materials are attached:

1. FSAR Figure 9.4-3 with the changes incorporated (Attachment 2).
2. Marked up versions of FSAR Figure 9.4-3 with the changes highlighted using circles, or "clouds" (Attachment 3).

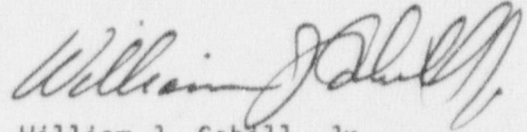
Don

8907050066 890630
FDR ADOCK 05000445
A PDC

TXX-89429
June 30, 1989
Page 2 of 2

3. A line-by-line description/justification of each item as it has been revised on Figure 9.4-3 (Attachment 1).

Sincerely,

A handwritten signature in cursive script, appearing to read "William J. Cahill, Jr.", written in dark ink.

William J. Cahill, Jr.

MCP/ddm
Enclosure

c - Mr. R. D. Martin, Region IV
Resident Inspectors, CPSES (3)

FSAR Page
(as amended)

Description

Figure 9.4-2

supply for Control Room HVAC system humidifiers.
(88-697)

Adds gravity dampers and temperature indication for
Room 100 in the Auxiliary Building. (88-806)

Group: 4

Related SER Section: 9.2.4

SER/SSER Impact: No

See Sheet No(s):02 and 03

Description: (Correction)

Delete damper operator and tag numbers. The damper is
locked open.

Justification:

To prevent inadvertant overpressurization, the damper
will be locked open. Actuator and instrumentation are
deleted from drawing to avoid confusion.

Group: 3

Related SER Section: 9.4.3

SER/SSER Impact: No

Figure 9.4-2

See Sheet No(s):03

Description: (Correction)

Corrects the air flow rates for the Auxiliary and Fuel
Building HVAC systems based on the revised calculation.

Justification:

Group: 2

Related SER Section: 9.4.2-3

SER/SSER Impact: No

Figure 9.4-3

Description: (Revision)

Justification:

Adds a non-safety related Battery Room HVAC System for
the new Battery Room and Charging Room. The new
Battery and Charging Room equipment is backup to
provide DC power to the emergency lighting in the
Control Room.

Group: 2

Related SER Section: 9.4

SER/SSER Impact: No

Figure 9.4-3, 6

Description: (Correction)

Misc. minor changes to match as-built plant.

Justification:

Changes reflect as-built conditions including flow,
valve symbol, line numbers, pipe class and tag numbers.

Group: 4

Related SER Section: 9.4

SER/SSER Impact: No

FSAR Page
(as amended)

Description

Figure 9.4-3, 11

See Sheet No(s):11 (Shs. 1 and 2)

Description: (Correction)

Changes Non-Safety Chilled Water System drawings to conform to as-built conditions adding drain assemblies and heater, correcting line and valve numbers, flow rates, and making other miscellaneous drafting changes.

Justification:

Changes are required by calculation revisions and to reflect as-built conditions.

Group: 3

Related SER Section: 9.4⁴

SER/SSER Impact: No

Figure 9.4-4, 5

Description: (Correction)

Changes Ventilation System drawings with new flow rates, deletes gravity dampers, operator and instrument tag numbers on locked-open control dampers, changes and makes miscellaneous drafting changes.

Justification:

Revised flow rates based on revised calculations are reflected on drawings along with related miscellaneous changes, to reflect as-built conditions.

Group: 3

Related SER Section: 9.4

SER/SSER Impact: No

Figure 9.4-4

See Sheet No(s):01, 02

Description: (Correction)

Justification:

Corrects the air flow rates and deletes gravity dampers for the Safeguard and Electrical area HVAC system, based on the revised calculation.

Group: 2

Related SER Section: 9.4.4

SER/SSER Impact: No

Figure 9.4-5

Description: (Correction)

Correct drawing to show one pressure switch rather than two for each pre-access filtration unit, to reflect as-built condition.

Justification:

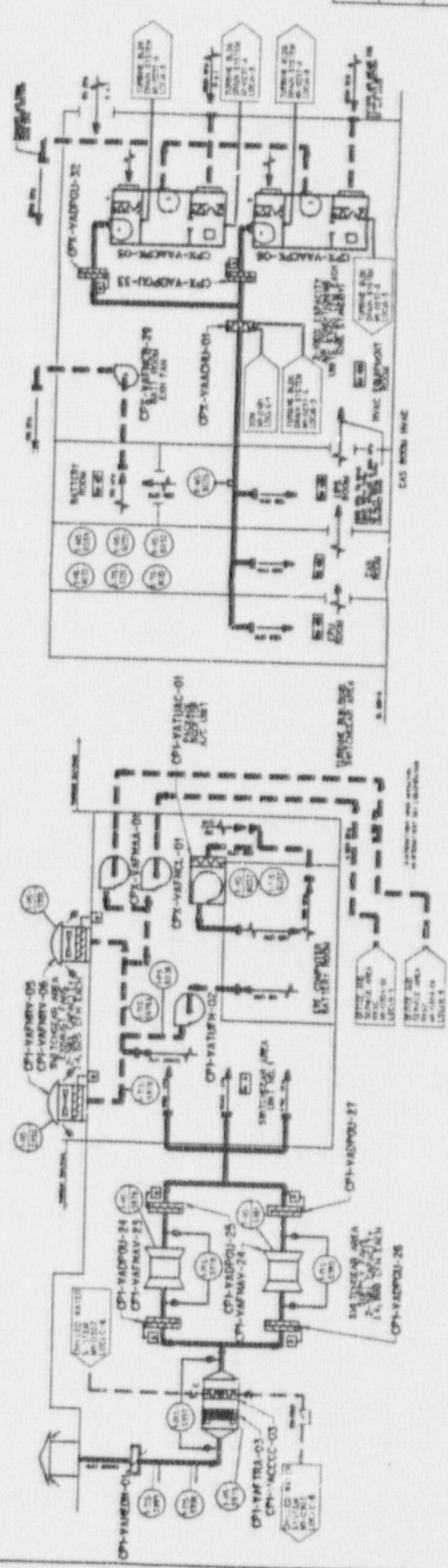
Only one pressure indication switch is provided for each unit to monitor high pressure differential across the unit.

Group: 2

Related SER Section: 9.4

SER/SSER Impact: No

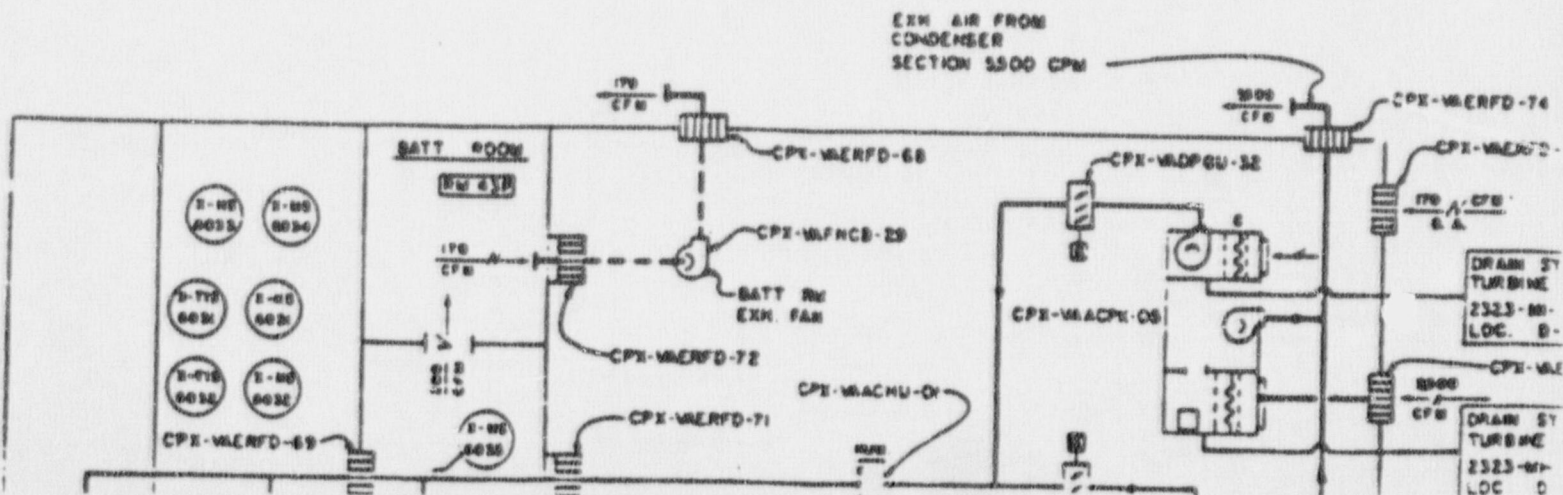
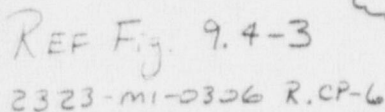
1000

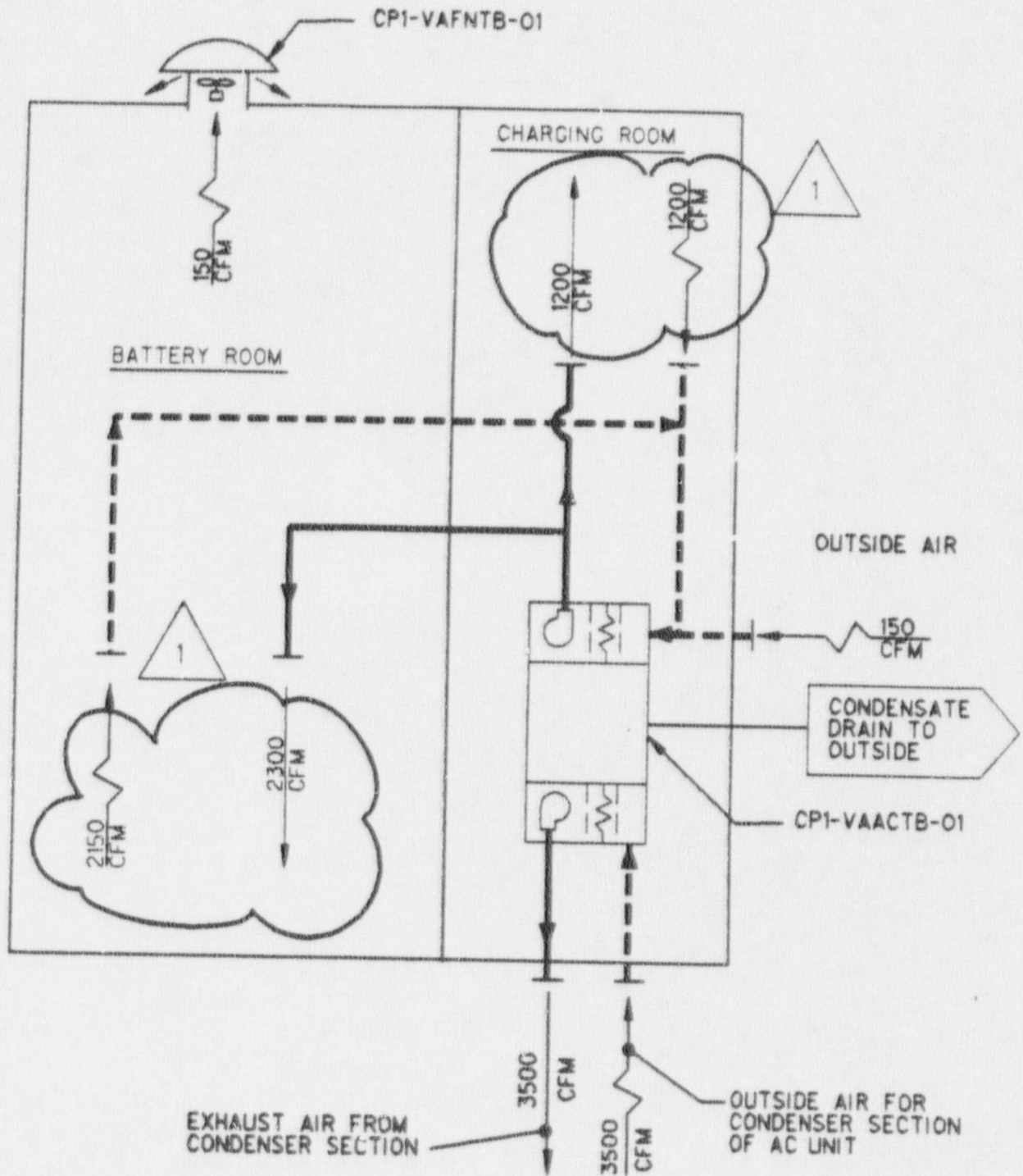


CONTROL
ROOM HVAC
2323-MM-0304
LOC D-4

Page 2 of 2

1. FOR HVAC ABBREVIATIONS A.
SEE 2323-MI-0300
2. FOR IBC AND MECHANICAL S
2323-MI-0200
3. THIS DIAGRAM IS SCHEMATIC
IS INTENDED TO SHOW GENE
DISTRIBUTION AND FLOW PLAN
4. BALANCING DAMPERS, REGISTE
FLEXIBLE CONNECTIONS AND
RELATED ACCESSORIES NOT
THIS DIAGRAM SHALL BE PREC
INDICATED ON THE HVAC AP
DRAWING AND SPECIFICATION
5. THE TURBINE BUILDING AND
AREA WILL BE MAINTAINED AT A
PRESSURE
6. ALL ROOF VALVES FOR DIFF
PRESSURE INDICATING SWITCH
ON THIS DRAWING WILL BE
BY SPECIFICATION 2323-MS





REF: 2323-M1-0306 CP-6 AND FSAR FIG. 9.4-3

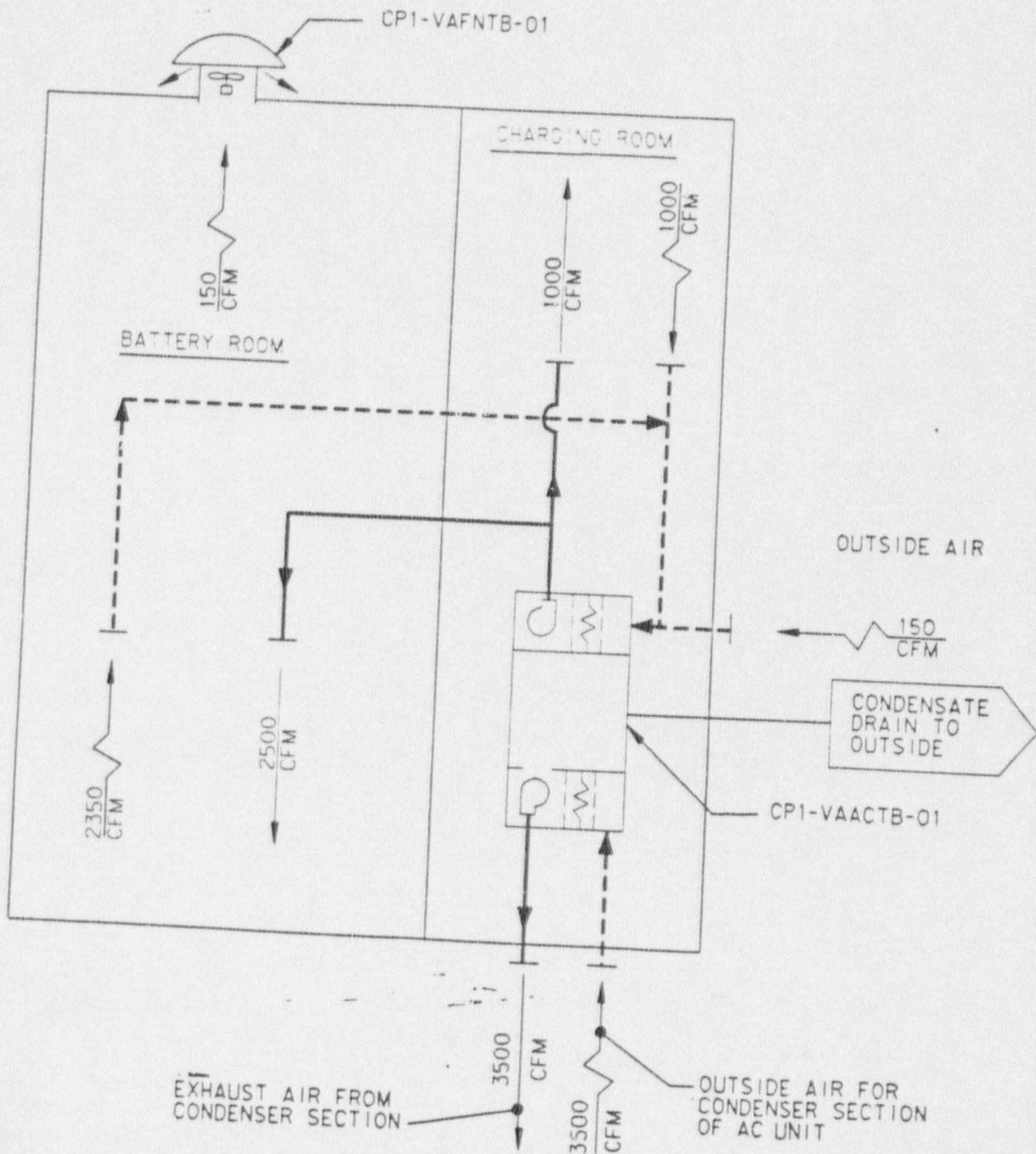


Figure 7-3