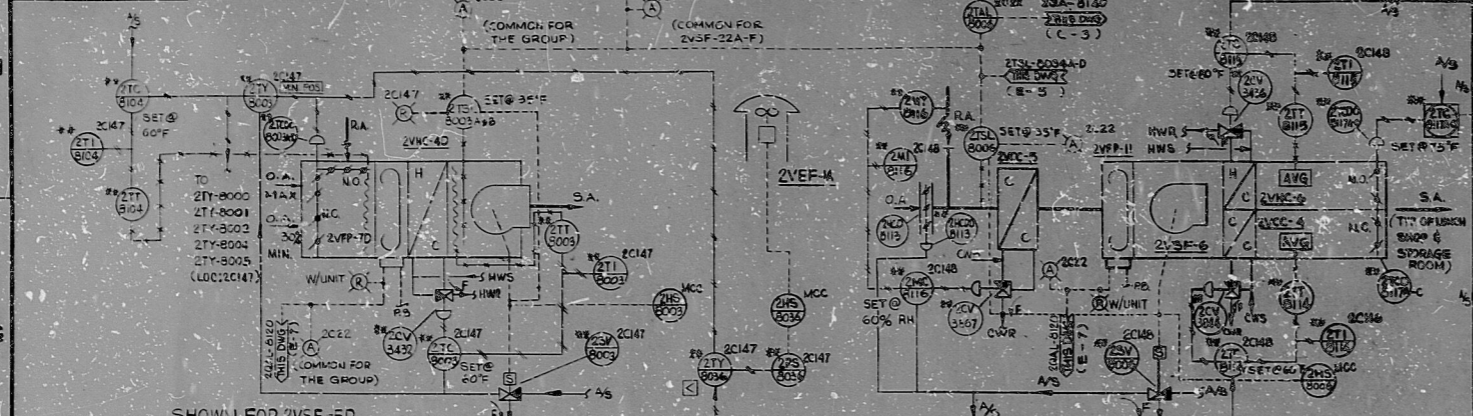
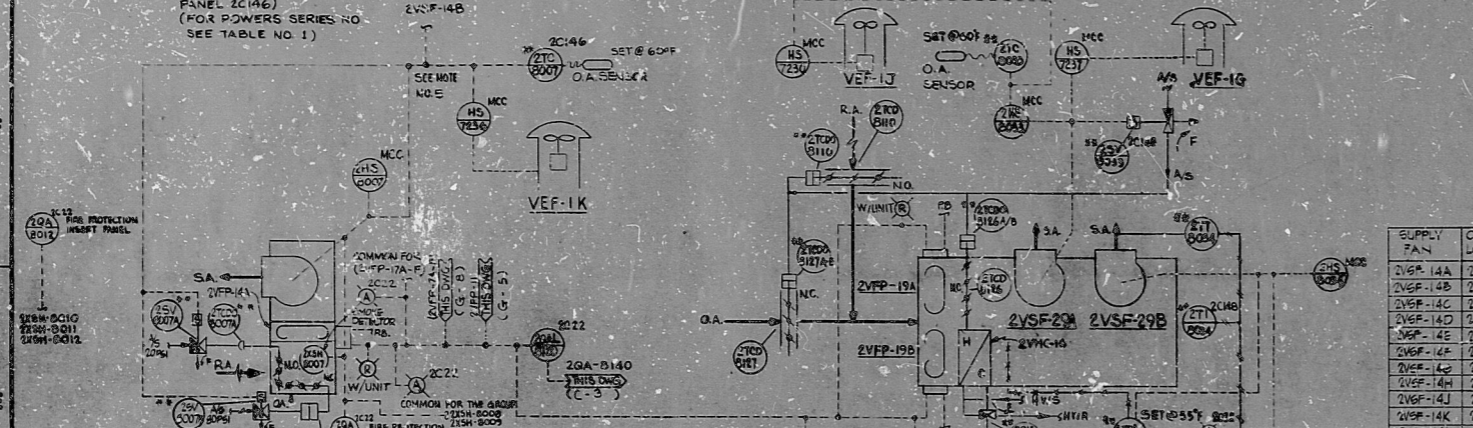


M 2260 HS



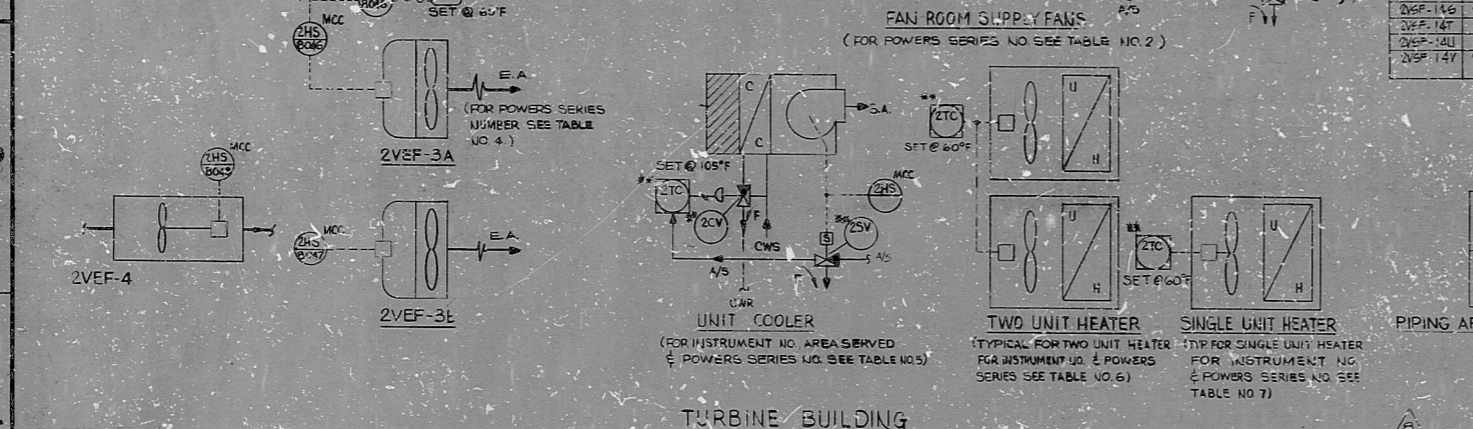
SHOWN FOR 2VFE-5D  
 TYP FOR 2VFE-1A, 2VFE-5B, 2VFE-5C,  
 2VFE-5E, 2VFE-5F AND 2VFE-21A  
 THRU 2VFE-21F (CONTROL  
 PANEL 2C116)  
 (FOR POWERS SERIES NO.  
 SEE TABLE NO. 1)

ELECTRICAL SHOP & STORAGE ROOMS SUPPLY FAN  
 (FOR POWERS SERIES NO. SEE TABLE NO. 1)

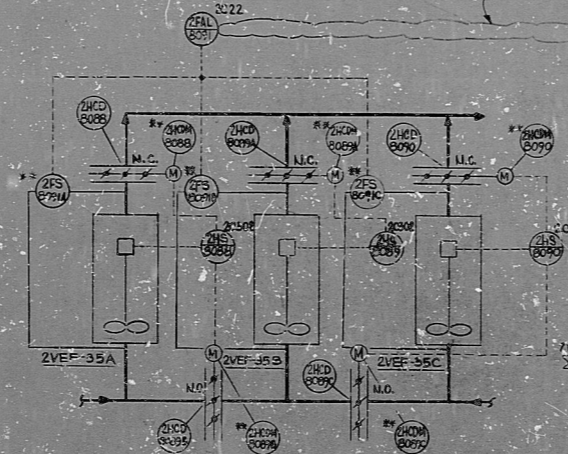


SHOWN FOR 2VFE-14A  
 TYP FOR 2VFE-14B THRU 2VFE-14H, 2VFE-14J THRU 14N AND 2VFE-14P THRU  
 2VFE-14Y (FOR INSTRUMENT NO. & POWERS SERIES NO. SEE  
 TABLE NO. 3)

FAN ROOM SUPPLY FANS  
 (FOR POWERS SERIES NO. SEE TABLE NO. 2)



TURBINE BUILDING



EMERGENCY DIESEL FUEL OIL STORAGE EXHAUST FAN  
 (FOR POWERS SERIES NUMBER SEE TABLE NO. 4)

TABLE NO. 1

SUPPLY FAN	CONTROL SW	LOC/MCC	VE 265	RC 185	TT 184	HT 186	GA 142A	VF 591MM	PM 331	VE 265	134-1080	134-1504	EMTFR LINE SER. NO. 32000	UNIT HEATER	POWERS SERIES NO.
2VFE-1A	2VFE-1A	2VFE-1A	2VFE-1A	2VFE-1A	2VFE-1A	2VFE-1A	2VFE-1A	2VFE-1A	2VFE-1A	2VFE-1A	2VFE-1A	2VFE-1A	2VFE-1A	2VFE-1A	2VFE-1A

TABLE NO. 2

SUPPLY FAN	CONTROL SW	LOC/MCC	VE 265	RC 185	TT 184	HT 186	GA 142A	VF 591MM	PM 331	VE 265	134-1080	134-1504	EMTFR LINE SER. NO. 32000	UNIT HEATER	POWERS SERIES NO.
2VFE-2	2VFE-2	2VFE-2	2VFE-2	2VFE-2	2VFE-2	2VFE-2	2VFE-2	2VFE-2	2VFE-2	2VFE-2	2VFE-2	2VFE-2	2VFE-2	2VFE-2	2VFE-2

TABLE NO. 3

SUPPLY FAN	CONTROL SW	LOC/MCC	VE 265	RC 185	TT 184	HT 186	GA 142A	VF 591MM	PM 331	VE 265	134-1080	134-1504	EMTFR LINE SER. NO. 32000	UNIT HEATER	POWERS SERIES NO.
2VFE-3	2VFE-3	2VFE-3	2VFE-3	2VFE-3	2VFE-3	2VFE-3	2VFE-3	2VFE-3	2VFE-3	2VFE-3	2VFE-3	2VFE-3	2VFE-3	2VFE-3	2VFE-3

TABLE NO. 4

EXHAUST FAN	CONTROL SW	LOC/MCC	VE 265	RC 185	TT 184	HT 186	GA 142A	VF 591MM	PM 331	VE 265	134-1080	134-1504	EMTFR LINE SER. NO. 32000	UNIT HEATER	POWERS SERIES NO.
2VFE-4	2VFE-4	2VFE-4	2VFE-4	2VFE-4	2VFE-4	2VFE-4	2VFE-4	2VFE-4	2VFE-4	2VFE-4	2VFE-4	2VFE-4	2VFE-4	2VFE-4	2VFE-4

TABLE NO. 5

EXHAUST FAN	CONTROL SW	LOC/MCC	VE 265	RC 185	TT 184	HT 186	GA 142A	VF 591MM	PM 331	VE 265	134-1080	134-1504	EMTFR LINE SER. NO. 32000	UNIT HEATER	POWERS SERIES NO.
2VFE-5	2VFE-5	2VFE-5	2VFE-5	2VFE-5	2VFE-5	2VFE-5	2VFE-5	2VFE-5	2VFE-5	2VFE-5	2VFE-5	2VFE-5	2VFE-5	2VFE-5	2VFE-5

TABLE NO. 6

EXHAUST FAN	CONTROL SW	LOC/MCC	VE 265	RC 185	TT 184	HT 186	GA 142A	VF 591MM	PM 331	VE 265	134-1080	134-1504	EMTFR LINE SER. NO. 32000	UNIT HEATER	POWERS SERIES NO.
2VFE-6	2VFE-6	2VFE-6	2VFE-6	2VFE-6	2VFE-6	2VFE-6	2VFE-6	2VFE-6	2VFE-6	2VFE-6	2VFE-6	2VFE-6	2VFE-6	2VFE-6	2VFE-6

TABLE NO. 7

EXHAUST FAN	CONTROL SW	LOC/MCC	VE 265	RC 185	TT 184	HT 186	GA 142A	VF 591MM	PM 331	VE 265	134-1080	134-1504	EMTFR LINE SER. NO. 32000	UNIT HEATER	POWERS SERIES NO.
2VFE-7	2VFE-7	2VFE-7	2VFE-7	2VFE-7	2VFE-7	2VFE-7	2VFE-7	2VFE-7	2VFE-7	2VFE-7	2VFE-7	2VFE-7	2VFE-7	2VFE-7	2VFE-7

TABLE NO. 8

EXHAUST FAN	CONTROL SW	LOC/MCC	VE 265	RC 185	TT 184	HT 186	GA 142A	VF 591MM	PM 331	VE 265	134-1080	134-1504	EMTFR LINE SER. NO. 32000	UNIT HEATER	POWERS SERIES NO.
2VFE-8	2VFE-8	2VFE-8	2VFE-8	2VFE-8	2VFE-8	2VFE-8	2VFE-8	2VFE-8	2VFE-8	2VFE-8	2VFE-8	2VFE-8	2VFE-8	2VFE-8	2VFE-8

TABLE NO. 9

EXHAUST FAN	CONTROL SW	LOC/MCC	VE 265	RC 185	TT 184	HT 186	GA 142A	VF 591MM	PM 331	VE 265	134-1080	134-1504	EMTFR LINE SER. NO. 32000	UNIT HEATER	POWERS SERIES NO.
2VFE-9	2VFE-9	2VFE-9	2VFE-9	2VFE-9	2VFE-9	2VFE-9	2VFE-9	2VFE-9	2VFE-9	2VFE-9	2VFE-9	2VFE-9	2VFE-9	2VFE-9	2VFE-9

TABLE NO. 10

EXHAUST FAN	CONTROL SW	LOC/MCC	VE 265	RC 185	TT 184	HT 186	GA 142A	VF 591MM	PM 331	VE 265	134-1080	134-1504	EMTFR LINE SER. NO. 32000	UNIT HEATER	POWERS SERIES NO.
2VFE-10	2VFE-10	2VFE-10	2VFE-10	2VFE-10	2VFE-10	2VFE-10	2VFE-10	2VFE-10	2VFE-10	2VFE-10	2VFE-10	2VFE-10	2VFE-10	2VFE-10	2VFE-10

- NOTE:
- FOR GENERAL NOTES LEGEND & REF. DWG. SEE DWG. M-2260.
  - FOR AIR FLOW DIAGRAM SEE DWG. M-2260 SH-1.
  - FOR LOGIC DIAGRAM SEE DWG. M-2422 SH-3, 2425 SH-1 TO 24M-2431.
  - \*\* INDICATES TO BE SUPPLIED BY SUB CONTRACTOR.
  - \* POTTER-BREMFIELD RELAY MODEL NO. MDR-1631 (12 POT, 1/2 VAC) OR EQUIVALENT ARE SUPPLIED BY SUB CONTRACTOR.
  - ALL ELECT. LINES SHOWN ON THIS DWG. ARE FOR REFERENCE ONLY. FOR DETAILS SEE ELECT. DWG.
  - INSTRUMENTS SHOWN IN ABOVE TABLES ARE REFERENCE ONLY.
  - ALL INSTRUMENTS WITH \*\* THAT ARE NOT LISTED IN ABOVE TABLES, SEE M/R M-2036.
  - \* SUPPLIED WITH EQUIPMENT.

PRC APERTURE CARD  
**PCOR ORIGINAL**  
 800300253 NRC

NO. 1	NO. 2	NO. 3	NO. 4	NO. 5	NO. 6	NO. 7	NO. 8	NO. 9	NO. 10

BIENTAL CORPORATION  
 3333 BENTLEY AVE.  
 BOSTON, MASS. 02118

HWAC CONTROL DIAGRAM  
 TURBINE BUILDING AND MISC. AREAS



IRC

50-368

8303090253

