



Muncy Valley Hospital

April 9, 1987

MS 16
P8

Ms. Judith A. Joustra
Nuclear Materials Safety Section B
Division of Radiation Safety and Safeguards
U.S. NUCLEAR REGULATORY COMMISSION
Region I
631 Park Avenue
King of Prussia, Pennsylvania 19406

Dear Ms. Joustra:

RE: License No. 37-18239-01
Docket No. 030-14714
Control No. 106732

Referencing the above, we will attempt to address your concerns as they appear in your letter dated March 16, 1987:

1. Regarding Dr. Sabbar's clinical experience, enclosed are NRC forms 313M with Supplements A and B. Also, Dr. Sabbar has referenced a previous NRC License number on which he was listed. The license number is 37-19272-0, and can be confirmed by contacting Dr. D. Pisano, Frankford Avenue, Philadelphia, Pennsylvania.
2. We will comply with your regulations and perform daily constancy checks of all commonly-used dose calibrator settings. The checks will be made utilizing our 137-Cs source and set for the following radionuclides: 99Mo - 99mTc - 123-I (we will check at the 123-I setting as we do not routinely use 131-I in our department).
3. Administration confirms that Edward Sowul has been granted the authority to advise and recommend safety procedures, and that he has been given the authority to implement corrective actions as he deems appropriate.

8709010289 870422
REG 1 LIC 30
37-18239-01 PDR

ED 10 10 10 10 10 10

106732

Tel. 717/546-8282

215 East Water Street, Muncy, Pennsylvania 17756

"OFFICIAL RECORD COPY"

ML18

APR 14 1987

4. Our Nuclear Medicine Department design is as enclosed. The only change we will be making is with our long term decay storage area. This area will be moved from its existing location in the elevator mechanical room to an area to the rear of the Hospital. This area has limited access to personnel of the Nuclear Medicine Department and the Director of Maintenance. Within this area, we will have a 3/4 inch plywood box with a padlock which will only be accessible to Nuclear Medicine personnel. The previous storage area will be surveyed by our consultant Physicist prior to its release for unrestricted use.
5. Our weekly wipe tests will be analyzed in our Pathology Department, utilizing an Abbott Model ANSR Gamma Well Counter. The well counter utilizes a 2" x 2" NaI crystal which is sufficiently sensitive for the measurement of our wipe samples.
6. Our action level for wipe tests analysis will be set to 2000 DPM per 100 CM².
7. We confirm that patient doses assayed in our Dose Calibrator will not differ from the prescribed dose by more than 10%.
8. We confirm that ancillary personnel will receive annual inservice training.
9. We will retain records at the frequency required by the NRC.
10. The following is our procedure for the disposal of generators:

Our generators are exchanged weekly. The generator for the past week's usage is packaged on Friday afternoons in its original box as per the manufacturers instructions. This generator is then maintained within our secured Nuclear Medicine Department until it is picked up for return by the manufacturer upon delivery of the new generator. Please find the storage area for the packaged "spent generator" on our diagram.
11. We confirm that food, drink, or personal effects will not be stored with radioactive material.
12. We confirm the use of gloves while handling radioactive materials.

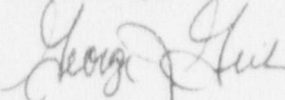
Ms. Judith A. Joustra
U.S.NUCLEAR REGULATORY COMMISSION
April 9, 1987

Page 3

We trust we have answered your concerns adequately and await your response to our Amendment request.

Thank you.

Sincerely,



George J. Geib, C.P.A.
Acting Chief Executive Officer
MUNCY VALLEY HOSPITAL

ba

Enclosures: NRC Form 313M, Supplements A & B
Diagram/Nuclear Medicine Department

cc: E.Sowul, Chief Technologist
U.S.NRC File

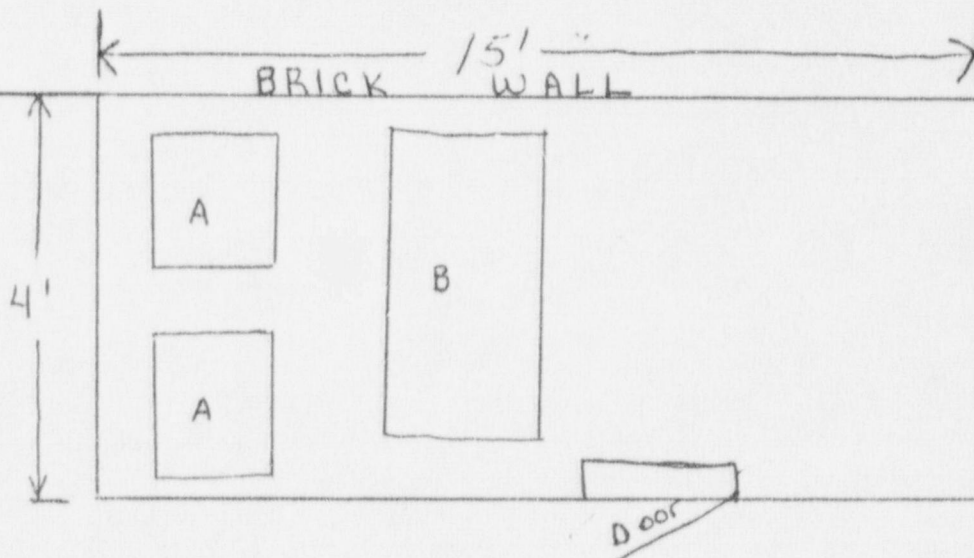
MISC2



Long term decay
storage area.

Muncy Valley Hospital

MAIN WING OF
HOSPITAL



A- compressors

B- Long term storage bin
with padlock.

PARKING
AREA

Tel. 717/546-8282

215 East Water Street, Muncy, Pennsylvania 17756

