

28C  
5-4-84  
A17 008. 131

# PACIFIC GAS AND ELECTRIC COMPANY

PG&E



77 BEALE STREET • SAN FRANCISCO, CALIFORNIA 94106 • (415) 781-4211 • TWX 910-372-6587

J. O. SCHUYLER  
VICE PRESIDENT  
NUCLEAR POWER GENERATION

April 27, 1984

PGandE Letter No. DCL-84-161

Mr. John B. Martin, Regional Administrator  
U. S. Nuclear Regulatory Commission, Region V  
1450 Maria Lane, Suite 210  
Walnut Creek, CA 94596-5368

Re: Docket No. 50-275, OL-DPR-76  
Diablo Canyon Unit 1  
SSER-22, Allegation 131  
Welding Base Plates to Fan Cooler Structure

Dear Mr. Martin:

PGandE letters DCL-84-067, DCL-84-078, and DCL-84-113 addressed the issue regarding the welding of A-325 studs to A-36 base material identified as Allegation 131 in SSER-22. The A-325 studs were tested and their acceptability for use as installed was demonstrated. However, in order to provide additional conservatism in the design and installation, PGandE elected to revise the pipe support design to require the base plates to be welded to the fan cooler structure in lieu of using the A-325 bolted connection.

The new design, qualified by calculations, has been issued. These modifications have been constructed and they are available for NRC inspection. Please advise if you have questions or require additional information.

Kindly acknowledge receipt of this material on the enclosed copy of this letter and return it in the enclosed addressed envelope.

Sincerely,

for J. O. Schuyler

cc: D. G. Eisenhut  
H. E. Schierling  
Service List

8709230119 870914  
PDR FDIA  
DEVINEB4-743 PDR

051884-20  
544-191-A

DIVISION OF REACTOR AND SAFETY PROJECTS INITIAL HAS NEEDS

	INITIAL	COPY	COPY
<input checked="" type="checkbox"/> Bishop			
Gilbert			
Western			

REACTOR PROJECTS BRANCH

<input checked="" type="checkbox"/> Kirsch			
Bianchi			

REACTOR PROJECTS SECTION 1

Dodds			
Periera			
Willett			
Hon			

RESIDENT INSPECTORS

Toth			
Waite			
Johnston			
Richards			

REACTOR PROJECTS SECTION 2

MILLER			
Myers			
Narbut			
Sorensen			
Hollenbach			

RESIDENT INSPECTORS

Eckhardt			
Perez			
Vorderbrueggen			
Fiorelli			
Bosted			
Zimmerman			

REACTOR PROJECTS SECTION 3

<input checked="" type="checkbox"/> Johnson P.			
<input checked="" type="checkbox"/> Morrill			
Haist			
Kanow			

RESIDENT INSPECTORS

Chaffee			
Stewart			
D'Angelo			
Mendonca			
Padovan			
Ross			
Polich			
Tatum			

REACTOR SAFETY BRANCH INITIAL HAS NEEDS

Pate			
Tolksdorf			

OPERATIONS SECTION

Zwetzig			
Crowley			
Elin			
Shiraki			
O'Brien			
Gage			
Muscat			

ENGINEERING SECTION

YOUNG			
Wagner			
Burdoin			
Prendergast			
Kellund			
Casella			
Ivey			
Qualls			
Clark			
Ball			
<input checked="" type="checkbox"/> Crowley			

DOCKET NO. 50-275/323  
 TOSS  IN FILE  RETAIN

COPY CAN BE FOUND ON TERA   
 ROUTE TO: \_\_\_\_\_

COMMENTS: \_\_\_\_\_  
 \_\_\_\_\_  
 \_\_\_\_\_

*Tom  
 File with allegation  
 No. 131.  
 K*

*545 159-A*



848

UNITED STATES OF AMERICA  
NUCLEAR REGULATORY COMMISSION

DOCKETED  
USNRC

ATOMIC SAFETY AND LICENSING APPEAL BOARD  
84 AGO -8 P2:47

Administrative Judges:

Thomas S. Moore, Chairman  
Dr. John H. Buck  
Dr. W. Reed Johnson

OFFICE OF  
DOCKETING  
August 13 1984  
BRANCH

ALAB-775A

In the Matter of  
PACIFIC GAS AND ELECTRIC COMPANY  
(Diablo Canyon Nuclear Power  
Plant, Units 1 and 2)

SERIALIZED 1984

Docket Nos. 50-275 OL  
50-323 OL

ORDER

On June 28, 1984, we denied, with one exception, the joint intervenors' motion to reopen the record in the Diablo Canyon operating license proceeding on the issue of the adequacy of the applicant's construction quality assurance program. See ALAB-775, \_\_\_ NRC \_\_\_. We reserved ruling on the joint intervenors' allegations that the applicant improperly used A307 hardware bolts with the heads removed as studs for the containment liner and ordered the applicant to provide us with certain additional information on this matter. We have now received that information.

Having reviewed the joint intervenors' motion and supporting material, the applicant's and NRC staff's answers, and the applicant's most recent filing in response to our order, we deny the reopening motion with respect to this matter as well. The joint intervenors' allegation

8408090183 840808  
PDR ADOCK 05000275  
PDR

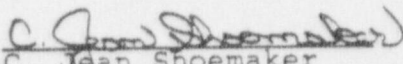
200

DS02

concerning the studs used for the containment liner (singularly or in combination with the other charges raised in the reopening motion) does not present new evidence of a significant safety issue that could have an effect on the outcome of the licensing proceeding. The motion is therefore denied.

It is so ORDERED.

FOR THE APPEAL BOARD

  
C. Jean Shoemaker  
Secretary to the  
Appeal Board





**Pullman Power Products**

Division of Pullman Incorporated

**FIELD WAREHOUSE REQUISITION**

0.2 (05-78)

ccw

ITEM NO. 1-14 LINE SPEC. 1-K2-317-12-B DATE 3-22-83  
 DETAIL DWG NO. 50043 DDR. NO. \_\_\_\_\_ ACT. NO. 7177 PAGE NO. 1 OF 1

QUANTITY	QUANTITY DELIVERED	ITEM DESCRIPTION	P.O. NO.	ITEM NO.	HEAT NO.
10	11	5/8" $\phi$ x 0'-2" lg. Bolts - A 325 <sup>1 1/2" dia</sup> <sub>2 3/4" lg.</sub> (weld studs, heads to be cut in field.)	6992	B	
0	10	Hex Nuts A 194 2H w/ Washers	7543	J	
			11716	C	
Class I Hex.					

APPROVED BY: R.W. Loren FOREMEN Fred Bauer 3-24-83 Q. A. APPROVED  
 ORDERED BY: John Reber  
 APPROVAL: \_\_\_\_\_ FILLED BY: \_\_\_\_\_  
 WHITE COPY - Q.A. CANARY COPY - WAREHOUSE PINK COPY - FIELD ENGINEERING

**Pullman Power Products**

**FIELD WAREHOUSE REQUISITION**

8.2 (05-78)

73/40SL

cut spray

ITEM NO. 2-12 LINE SPEC. 2-S3-326-8 B DATE 3-28-83  
 DETAIL DWG NO. 500908 DDR. NO. \_\_\_\_\_ ACT. NO. 7177 PAGE NO. 1 OF 1

QUANTITY	QUANTITY DELIVERED	ITEM DESCRIPTION	P.O. NO.	ITEM NO.	HEAT NO.
6	6	1/2" $\phi$ x 1 1/2" LG (MIN) THREADED WELDING STUD CS A 307 GRADE B Issued 1/2 x 2 A-307 Cap Screws to be cut in field.	11117	G	
CLASS I Hex. MAT					

APPROVED BY: John Reber FOREMEN Fred Bauer 3-29-83 Q. A. APPROVED  
 ORDERED BY: C. L. Conner  
 APPROVAL: \_\_\_\_\_ FILLED BY: \_\_\_\_\_

8.2 (05-78)

### Pullman Power Products

Division of Pullman Incorporated

### FIELD WAREHOUSE REQUISITION

ccw

FORM 1-14 LINE SPEC 1-K2-314-12 DATE 3-16-83  
 NO. N/A DETAIL DWG NO. 049266 DDR. NO. N/A ACT. NO. 7177 PAGE NO.      OF     

QUANTITY	QUANTITY DELIVERED	ITEM DESCRIPTION	P.O. NO.	ITEM NO.	HEAT NO.
2	20	<del>5/8" <math>\phi</math> x 2 3/4" Long Threaded Pullman Stud</del> (BOLTS-SHEAR HEADS) $\frac{1}{2}$ " C.S. A-325	6992	B	
0	10	5/8" Hex Nuts and Washers A194 2H	11024	E	
			11716	C	
CLASS I Hanger #59N1/2G					

APPROVED BY Paul S. Williams  
 FOREMAN  
 D. BY [Signature]  
 APPROVAL

DATE 3-17-83  
 Q. A. APPROVED  
 FILLED BY [Signature]

WHITE COPY - QA

CANARY COPY - WAREHOUSE

PINK COPY - FIELD ENGINEERING

Hgr. # 43-86

o.c.w.

**Pullman Power Products**

Division of Pullman Incorporated

**FIELD WAREHOUSE REQUISITION**

8.2 (05-78)

ITEM NO 1-14 LINE SPEC. 1-K2-318-12B DATE 3-26-83  
 NO 049255 DETAIL DWG. NO. 500043 DDR. NO. 7177 ACT. NO. 7177 PAGE NO. 1 OF 1

QUANTITY	QUANTITY DELIVERED	ITEM DESCRIPTION	P.O. NO.	ITEM NO.	HEAT NO.
10	9	5/8" $\phi$ x 0'-2 1/4" Hg Bolts c.s. A 325 (weld studs heads to be cut in field).	7523	C	
0	9	3/8" Hex Nuts A 1942H (c.s.) w/washers.	7523	C	
CLASS I Hgr. Mat.					

Delivered to Area Victorville FOREMEN Boots Hendon Jr.  
 CHECKED BY [Signature]

Q. A. APPROVED [Signature] 3-28-83  
 FILLED BY [Signature] #039

WHITE COPY — Q. A.      CANARY COPY — WAREHOUSE      PINK COPY — FIELD ENGINEERING



3.2 (05-78)

### Pullman Power Products

Division of Pullman Incorporated

### FIELD WAREHOUSE REQUISITION

ccw 59N / 36

ITEM NO. 14 LINE SPEC. 1-K2 <sup>315</sup>/<sub>320</sub> -12 [B] DATE 3-21-83  
 NO. NA DETAIL DWG NO. 049266 DDR. NO. NA ACT. NO. 7177 PAGE NO.      OF     

QUANTITY	QUANTITY DELIVERED	ITEM DESCRIPTION	P.O. NO.	ITEM NO.	HEAT NO.
		SAF 321103			
10	10	5/8" d Nelson Weld Studs threaded 1/5 A207 Gr B	9185	A	
10	10	5/8" d Nuts. A194 2H.	10906	B	
10	10	5/8" d Washers A325	11716	C	

Class I. Har.

APPROVED BY: Marshall FOREMEN 1685 Q. A. APPROVED Don Price 3-21-83  
 D. BY: Guido A. Alidemma 3/21/83 FILLED BY: Don Price 3/21/83  
 APPROVAL: \_\_\_\_\_  
 WHITE COPY - Q.A. CANARY COPY - WAREHOUSE PINK COPY - FIELD ENGINEERING

3.2 (05-78)

### Pullman Power Products

### FIELD WAREHOUSE REQUISITION

ccw 59N / 46

ITEM NO. 14 LINE SPEC. 1-K2 <sup>315</sup>/<sub>320</sub> -12 [B] DATE 3-21-83  
 NO. NA DETAIL DWG NO.      DDR. NO.      ACT. NO. 7177 PAGE NO.      OF     

QUANTITY	QUANTITY DELIVERED	ITEM DESCRIPTION	P.O. NO.	ITEM NO.	HEAT NO.
		SAF 321103			
10	10	5/8" d Nelson Weld Studs threaded 1/5 A207 Gr B	9185	A	
10	10	5/8" d Nuts. A194 2H.	10906	B	
10	10	5/8" d Washers A325	11716	C	

Class I. Har.

APPROVED BY: Marshall FOREMEN 1685 Q. A. APPROVED Don Price 3-21-83  
 D. BY: Guido A. Alidemma 3/21/83 FILLED BY: Don Price 3-21-83  
 APPROVAL: \_\_\_\_\_

91  
6-1-83

8.2 (05-78)

FIELD WAREHOUSE REQUISITION

ITEM 07 LINE SPEC 56-63-1 DATE 6-1-83  
NO N/A DETAIL DWG NO 502730 DDR NO --- ACT NO 7177 PAGE NO --- OF ---

QUANTITY	QUANTITY DELIVERED	ITEM DESCRIPTION	P.O. NO.	ITEM NO.	HEAT NO.
4	4	1/2" x 1 1/2" WELD STUDS A307 grade B CS.	11553	A	
4	4	HEX NUTS 1/2" x 1/2" CS. A194-2H	11906	A	
2	0	LOCKNUTS 1/2" x 1/2" HEX CS. A194 2H			
CLASS I HANGER MAT					

140' TUBS W/SIDE  
 APPROVED BY: [Signature] FOREMAN  
 Q. A. APPROVED: Don Rice 6-2-83  
 FILED BY: [Signature]  
 WHITE COPY - QA      CANARY COPY - WAREHOUSE      PINK COPY - FIELD ENGINEERING

70/44 SL PR.1  
2000

8.2 (05-78)

FIELD WAREHOUSE REQUISITION

ITEM 1214 LINE SPEC 2-K11-2313-3 [C] DATE 6-2-83  
NO --- DETAIL DWG NO 051394 DDR NO --- ACT NO 7177 PAGE NO 1 OF 1

QUANTITY	QUANTITY DELIVERED	ITEM DESCRIPTION	P.O. NO.	ITEM NO.	HEAT NO.
4	4	5/8" x 2 1/2" LONG THREADED WELDING STUD	9185	A	
4	4	5/8" HEAVY NUT A-194 2H	11024	E	
4	4	5/8" WASHERS A-325	111716	C	

CLASS I HANGER  
 APPROVED BY: [Signature] FOREMAN  
 Q. A. APPROVED: Van Haden 6-3-83  
 FILED BY: [Signature]  
 G. APPROVAL: G. DILLON



8.2 (05-78)

Pullman Power Products

CONT I 176  
1384

FIELD WAREHOUSE REQUISITION

ITEM NO. 1-12 LINE SPEC. 1-55-270-10-13 DATE 6-3-83  
DWG NO. 500176 SK-176-1384 DDR. NO. ACT. NO. 7177 PAGE NO. OF

QUANTITY	QUANTITY DELIVERED	ITEM DESCRIPTION	P.O. NO.	ITEM NO.	HEAT NO.
6	6	1/2" $\phi$ THREADED WELDING STUDS 2 1/2" LG	12991	B	
		Nelson STUDSA-108			
6	6	1/2" Hex NUTS CS A194-2H	11906	A	
6	0	1/2" 1/2 Hex NUTS CS A194-2H			
Class I Hanger Material					

APPROVED BY: *[Signature]* FOREMEN  
 Q. A. APPROVED: *[Signature]* 6-3-83  
 FILLER BY: *[Signature]* 6-3-83  
 APPROVAL: *[Signature]* MIKE THURMAN  
 WHITE COPY - QA      CANARY COPY - WAREHOUSE      PINK COPY - FIELD ENGINEERING

8.2 (05-78)

Pullman Power Products

Priority 5/32 R  
SI

FIELD WAREHOUSE REQUISITION

ITEM NO. 9 LINE SPEC. 2-56-255-10 SPL [A] DATE 6-6-83  
NO. 5/32R DWG NO. 057349 DDR. NO. ACT. NO. 7177 PAGE NO. OF

QUANTITY	QUANTITY DELIVERED	ITEM DESCRIPTION	P.O. NO.	ITEM NO.	HEAT NO.
6	6	3/8" X 0'3" Lg. Threaded welding stud w/ Hex nuts	9287	B	
Manuf. from A307 Gr. B Mat					
Class I Hanger					

APPROVED BY: *[Signature]* FOREMEN  
 Q. A. APPROVED: *[Signature]* 6-6-83  
 FILLER BY: *[Signature]* 6-6-83  
 APPROVAL: *[Signature]*



8.24(05-78)

Pullman Products

FIELD WAREHOUSE REQUISITION

409/131  
COLD  
HYDRO PUMP

ITEM 7-09

LINE SPEC. 2-56-1993-1 1/2

DATE 6/6/83

NO. \_\_\_\_\_

DETAIL

DWG NO 051409

DDR NO \_\_\_\_\_

ACT NO 7177

PAGE NO 1 OF 1

QUANTITY	QUANTITY DELIVERED	ITEM DESCRIPTION	P.O. NO.	ITEM NO.	HEAT NO.
8	8	1/2" $\phi$ (THREADED WELDING STUDS 1 1/2" LB <del>A 36</del> <del>WASHERS (FLAT)</del>	11553	A	
		CLASS I HGR <del>CLASS A</del>			

P.V.C.  
 SUPERVISOR AREA *[Signature]*  
 FOREMEN *[Signature]*  
 APPROVAL *[Signature]*  
 TCCRA

Q. A. APPROVED *[Signature]* 6-7-83  
 FILLED BY *[Signature]* 6-7-83

WHITE COPY - O.A.

CANARY COPY - WAREHOUSE

PINK COPY - FIELD ENGINEERING

2918  
 8.2 (05-78) Pullman Power Products  
 FIELD WAREHOUSE REQUISITION  
 EM 2-08 LINE SPEC. S2-1485-3 DATE 6-8-83  
 NO. N.A. DETAIL DWG NO. 2199-27 DDR NO. N.A. ACT NO. 7177 PAGE NO. 1 OF 1

QUANTITY	QUANTITY DELIVERED	ITEM DESCRIPTION	PO NO.	ITEM NO.	HEAT NO.
(2)		1/2" X 1" WELDED STUDS	18657	A	
		C.S. A 307 GRADE B			
		ISSUED 1/2" X 1 1/2"			
		CLASS F HANGER			
		2199-27			

2-140  
 VER TO AREA Foreman  
 BY [Signature]  
 APPROVAL  
 WHITE COPY - QA  
 CANARY COPY - WAREHOUSE  
 PINK COPY - FIELD ENGINEERING

[Signature] FOREMAN  
 [Signature] C.A. APPROVED  
 DATE 6-8-83  
 FILLED BY [Signature]

8.2 (05-78) Pullman Power Products  
 FIELD WAREHOUSE REQUISITION  
 EM 8 LINE SPEC. 2-56-246-3 DATE 6-8-83  
 NO. DWG NO. 051353 DDR NO. ACT NO. 7177 PAGE NO. 1 OF 1

QUANTITY	QUANTITY DELIVERED	ITEM DESCRIPTION	PO NO.	ITEM NO.	HEAT NO.
2	0	5/8" X 1 3/4" 16 THREAD WELDING STUD <del>WELDED</del> A 307 GRADE B			
2	2	3" Ø PIPE CLAMPS FIG 212	1350	B	
		CLASS I HGR			

VER TO AREA Foreman  
 BY [Signature]  
 APPROVAL  
 WHITE COPY - QA  
 CANARY COPY - WAREHOUSE  
 PINK COPY - FIELD ENGINEERING

[Signature] FOREMAN  
 [Signature] DON BICE 7-13-83 C.A. APPROVED  
 DATE 7-13-83  
 FILLED BY [Signature]



8.2 (05-78)

Pullman Power Products

HER # 78/2925

FIELD WAREHOUSE REQUISITION

RCS

STEM 07 LINE SPEC 56-41-1 DATE 6-9-83  
NO. 1 DETAIL DWG NO 78/2925L DOR. NO. ACT NO 7177 PAGE NO 1 OF 4

QUANTITY	QUANTITY DELIVERED	ITEM DESCRIPTION	P.O. NO.	ITEM NO.	HEAT NO.
6		1/2" dia x 1 1/2" Lg WELD STUDS	10651	A	
		CSA 307 GR B			
		CLASS I HGR. MATL			
		HER # 78-2925L			

RE-140-0  
 DELIVER TO AREA FOREMEN  
 Q.A. APPROVED  
 W. L. Smith  
 FILLED BY  
 WHITE COPY - Q.A. CANARY COPY - WAREHOUSE PINK COPY - FIELD ENGINEERING

8.2 (05-78)

Pullman Power Products

Cont. I 176/125R

FIELD WAREHOUSE REQUISITION

Cont. Spring

STEM 1-12 LINE SPEC 1-53-270-10-B DATE 6-8-83  
NO 500176 DETAIL DWG NO 176-125R DOR. NO. ACT NO 7177 PAGE NO OF

QUANTITY	QUANTITY DELIVERED	ITEM DESCRIPTION	P.O. NO.	ITEM NO.	HEAT NO.
AS	13	Nelson Weld Studs 3/8" Lg	12491	A	
		Class I Hang. Material			

DELIVER TO AREA FOREMEN  
 G. A. APPROVED  
 M. E. Thurman 6-8-83  
 FILLED BY  
 J. L. Swenson 6-9-83



8.2 (05-78)

Pullman Power Products *Cont I* 176  
FIELD WAREHOUSE REQUISITION *Cont spray* 125A

ITEM H-12 LINE SPEC 1-53-270-10B DATE 6-9-83  
NO 500176 DETAIL DWG NO SK176-125A DR NO \_\_\_\_\_ ACT NO 7177 PAGE NO \_\_\_\_\_ OF \_\_\_\_\_

QUANTITY	QUANTITY DELIVERED	ITEM DESCRIPTION	P.O. NO.	ITEM NO.	HEAT NO.
32	32	W-1000 STUDS 1/2" φ - 3 1/2" Lg A307 G.R.B.	12881	B	
Class I Forged Material					
PO 12881 DE-ECED 1-83					

DELIVER TO AREA A.S. Quinn FOREMEN G. Hunter Q.A. APPROVED Don Bice 6-10-83  
 CHECKED BY DAUG PECK Q.A. APPROVAL W. Jensen 6-10-83 FILLED BY  
 WHITE COPY - Q.A. CANARY COPY - WAREHOUSE PINK COPY - FIELD ENGINEERING

8.2 (05-78)

Pullman Power Products *Cont I* 176  
FIELD WAREHOUSE REQUISITION *Cont spray* 125A

ITEM H-12 LINE SPEC 1-53-270-10B DATE 6-9-83  
NO 500176 DETAIL DWG NO SK176-125A DR NO \_\_\_\_\_ ACT NO 7177 PAGE NO \_\_\_\_\_ OF \_\_\_\_\_

QUANTITY	QUANTITY DELIVERED	ITEM DESCRIPTION	P.O. NO.	ITEM NO.	HEAT NO.
45	45	1/2" FLAT WASHER CS A325	11716	B	
45	45	HEAVY HEX NUT 1/2" CS A19A 2H	11932	K	
45	0	1/2" <del>lock</del> NUTS CS A19A 2H			
Class I Forged Material					

DELIVER TO AREA E. Pappo FOREMEN G. Hunter Q.A. APPROVED Don Bice 6-9-83  
 CHECKED BY DAUG PECK Q.A. APPROVAL E.H. Bice 6-9-83 FILLED BY  
 WHITE COPY - Q.A. CANARY COPY - WAREHOUSE PINK COPY - FIELD ENGINEERING

Pullman Power Products

FIELD WAREHOUSE REQUISITION

8.2 (05-78)

ITEM 12 CS LINE SPEC Cont liner Weld Studs DATE 6-9-83  
 NO. 501520 DETAIL DWG NO. NA DDR NO. NA ACT. NO. 7177 PAGE NO. 1 OF 1

QUANTITY	QUANTITY DELIVERED	ITEM DESCRIPTION	P.O. NO.	ITEM NO.	HEAT NO.
100	100	1/2" X 2 1/2" NELSON STUDS GR 1010 - A 108	12491	B	
50	50	1/2" X 3 1/2" NELSON STUDS GR 1010 - A 108	12981	B	
TO BE STORED IN CLASS 1 STORAGE CONT #12 DOME BOO ROOM					

VERIFIED BY Velasco FOREMEN  
 Q. A. APPROVED BY Don Bice 6-9-83  
 D. BY [Signature]  
 APPROVAL [Signature] FILLED BY J. J. [Signature] 6-9-83  
 WHITE COPY - Q. A. CANARY COPY - WAREHOUSE PINK COPY - FIELD ENGINEERING

Pullman Power Products

FIELD WAREHOUSE REQUISITION

8.2 (05-78)

ITEM 2-08 LINE SPEC S2-1485-3/4" DATE 6-9-83  
 NO. N/A DETAIL DWG NO. 2199-27 DDR NO. N/A ACT. NO. 7177 PAGE NO. 1 OF 1

QUANTITY	QUANTITY DELIVERED	ITEM DESCRIPTION	P.O. NO.	ITEM NO.	HEAT NO.
2(2)	2	1/2" Ø X 1" LG WELDED STUDS CS A307 GRB ISSUED 1/2" X 1 1/2" LG R.I.			
CLASS 1 HGR MATL HGR # 2199-27					

Q. A. APPROVED BY Al Geiger 6-10-83  
 D. BY E. A. Moon  
 APPROVAL [Signature] FILLED BY [Signature]







FIELD WAREHOUSE REQUISITION

SI

ITEM 1-09 LINE SPEC. 56-524-3/4 DATE 7/11/83  
DETAIL DWG NO 502156 DDR NO ACT NO 7177 PAGE NO 1 OF 1

QUANTITY	QUANTITY DELIVERED	ITEM DESCRIPTION	P.O. NO.	ITEM NO.	HEAT NO.
4	4	1/2" Weld studs 2 1/2 Lg CS A307 Gr B	12491	B	
		Class I Hanger Mat			

DELIVER TO AREA: Elsther FOREMEN: Mal Holt Q.A. APPROVED: Vern Woodcock 7-11-83  
 ORDERED BY: Jim Taylor FILLED BY: R. Feiler 7-11-83  
 APPROVAL: Lucas Hocking

WHITE COPY - Q.A.

CANARY COPY - WAREHOUSE

PINK COPY - FIELD ENGINEERING

FIELD WAREHOUSE REQUISITION

ITEM 1-07 LINE SPEC. 1-5-1676-3/4 DATE 8-16-83  
 DETAIL DWG NO 049244 DDR NO ~~049244~~ ACT NO 7177 PAGE NO 1 OF 1

QUANTITY	QUANTITY DELIVERED	ITEM DESCRIPTION	P.O. NO.	ITEM NO.	HEAT NO.
4	4	1/2" x 2 1/2" Weld studs C.S. H-108-GR 1010/1020	13447	E	
		CLASS I HANG.			

DELIVER TO AREA: W. Board FOREMEN: W. Board Q.A. APPROVED: W. Board 8-16-83  
 ORDERED BY: W. Board 8-16-83 FILLED BY: R.C.A. 8-16-83  
 APPROVAL: S. FOX

8.2 (05-78)

Pullman Power Products

FIELD WAREHOUSE REQUISITION

RHR

HGR # 66/52

ITEM 1-10 CONT. LINE SPEC 56-3094 - 3/4" AL[A] DATE 7-8-83  
NO \_\_\_\_\_ DETAIL DWG NO 500066 DDR NO \_\_\_\_\_ ACT NO 2177 PAGE NO \_\_\_\_\_ OF \_\_\_\_\_

QUANTITY	QUANTITY DELIVERED	ITEM DESCRIPTION	P.O. NO.	ITEM NO.	HEAT NO.
4	4	1/2" $\phi$ X 1 1/2" CS WELD STUDS, GR. A307	11553	A	

CLASS I HGR

FORWARDED TO AREA \_\_\_\_\_ FOREMEN \_\_\_\_\_  
BY R. Romanian

Don Bice 7-8-83 Q. A. APPROVED  
W. Romanian 7-9-83 FILLED BY

WHITE COPY - Q.A. CANARY COPY - WAREHOUSE PINK COPY - FIELD ENGINEERING

8.2 (05-78)

Pullman Power Products

FIELD WAREHOUSE REQUISITION

MANAGER # 46  
RHR 11R

ITEM \_\_\_\_\_ LINE SPEC L-56-3488-35P1 [A] DATE 7/9/83  
NO \_\_\_\_\_ DETAIL DWG NO SK-46-11R DDR NO \_\_\_\_\_ ACT NO 7177 PAGE NO \_\_\_\_\_ OF \_\_\_\_\_

QUANTITY	QUANTITY DELIVERED	ITEM DESCRIPTION	P.O. NO.	ITEM NO.	HEAT NO.
8	8	1/2" $\phi$ , 2" LG. THREADED WELDING STUDS W/ HW HEX NUTS & WASHERS	12491	B	
8	8	A-108-1010-1020 (.250) A194 G.24 (Nuts) FW # X 407 A	12837	B	

CLASS I MATERIAL HGR

FORWARDED TO AREA CONT I 140.811.1  
BY [Signature] FOREMEN [Signature]

RCKin 7-5-83 Q. A. APPROVED  
LONG 7-9-83 FILLED BY



8.2 (05-78)

Pullman Power Products

FIELD WAREHOUSE REQUISITION

ITEM 9 LINE SPEC 56-1991-13 DATE 7-11-83

NO DWG NO 202734 DDR NO ACT NO 1177 PAGE NO OF 1

QUANTITY	QUANTITY DELIVERED	ITEM DESCRIPTION	P.O. NO.	ITEM NO.	HEAT NO.
1	1	2X 1/2" WELD STUD	11553	A	
		CS A307 GR B			
		CLASS 1 HGR			

FORWARDED TO AREA FOREMEN O A APPROVED [Signature] 7-12-83

BY [Signature] 7/11/83 FILLED BY [Signature] 7/12/83

APPROVAL WHITE COPY - QA CANARY COPY - WAREHOUSE PINK COPY - FIELD ENGINEERING

8.2 (05-78)

Pullman Power Products

FIELD WAREHOUSE REQUISITION

ITEM 2-09 LINE SPEC 2-56-256-10 SPL [A] DATE 7-11-83

NO N/A DWG NO SK72-25L DDR NO ACT NO 7177 PAGE NO OF

QUANTITY	QUANTITY DELIVERED	ITEM DESCRIPTION	P.O. NO.	ITEM NO.	HEAT NO.
2	2	1/2" Welding Studs 1/2" lg CS A307 Gr B 11553		A	
2	0	1" Bolt UNC - 2TR 6" CS A307 Gr B			
2	2	1" Nuts A-194 2H	12837	F	
2	2	1/2" Nuts A-194 2H	12837	B	

CLASS 1 HGR.

FORWARDED TO AREA FOREMEN O A APPROVED [Signature] 7-12-83

BY [Signature] 7/11/83 FILLED BY [Signature] 7-12-83

APPROVAL WHITE COPY - QA CANARY COPY - WAREHOUSE PINK COPY - FIELD ENGINEERING



Pullman Power Products

FIELD WAREHOUSE REQUISITION

8.2 (05-78)

SYSTEM N/A LINE SPEC 56-1993-1 1/2 DATE 7-13-83  
 DETAIL DWG NO 502156 DOR NO NA ACT NO 7177 PAGE NO 1 OF 1

QUANTITY	QUANTITY DELIVERED	ITEM DESCRIPTION	P.O. NO.	ITEM NO.	HEAT NO.
	<u>1</u>	<u>1/2" x 1 1/2" WELD STUD CS A307 GR B</u>	<u>10651</u>	<u>A</u>	
		<u>Class II Hanger Matl.</u>			

APPROVED BY Russell Anderson FOREMEN  
 G. A. APPROVED John Bl...  
 WHITE COPY - O.A.    CANARY COPY - WAREHOUSE    PINK COPY - FIELD ENGINEERING

Pullman Power Products

FIELD WAREHOUSE REQUISITION

8.2 (05-78)

SYSTEM 8 LINE SPEC 7-56-246-13 DATE 6-13-83  
 DETAIL DWG NO 051353 DOR NO  ACT NO 7177 PAGE NO 1 OF 1

QUANTITY	QUANTITY DELIVERED	ITEM DESCRIPTION	P.O. NO.	ITEM NO.	HEAT NO.
<u>2</u>	<u>2</u>	<u>5/8" x 2 1/2" LGS THREADED WELDING STUD A307 GRADE B</u>	<u>9185</u>	<u>A</u>	
<u>2</u>	<u>2</u>	<u>A194 2H 5/8 HEX NUTS</u>	<u>12837</u>	<u>C</u>	
		<u>CLASS 1 H6K</u>			

APPROVED BY William Grant FOREMEN  
 G. A. APPROVED Don Rice  
 WHITE COPY - O.A.    CANARY COPY - WAREHOUSE    PINK COPY - FIELD ENGINEERING

FIELD WAREHOUSE REQUISITION

ITEM 2-08 LINE SPEC 52-1485-34 DATE 8-22-83  
DETAIL DWG NO 502199 DDR NO N.A. ACT. NO 7177 PAGE NO 1 OF 1

QUANTITY	QUANTITY DELIVERED	ITEM DESCRIPTION	P.O. NO.	ITEM NO.	HEAT NO.
	2	1/2" X 1 1/2" WELDED STUD A307-GR-B	10651	A	
	2	1/2" NUTS 1948	13163	B	
		CLASS I Hqr MAT.			

APPROVED BY: V. Jones FOREMEN  
 O.A. APPROVED: [Signature] 8-22-83  
 DRAWN BY: [Signature]  
 APPROVAL: [Signature] FILLED BY: [Signature]  
 WHITE COPY - QA    CANARY COPY - WAREHOUSE    PINK COPY - FIELD ENGINEERING

Pullman Power Products

FIELD WAREHOUSE REQUISITION

ITEM 8 LINE SPEC 52-208-3 DATE 7/7/83  
DETAIL DWG NO FA10971 DDR NO 336/61R ACT. NO 7177 PAGE NO OF

QUANTITY	QUANTITY DELIVERED	ITEM DESCRIPTION	P.O. NO.	ITEM NO.	HEAT NO.
4	4	1/2 X 2 1/2 STUD CS A307 Gd B	12077	I	
		Class I Hqr Mat			

APPROVED BY: TOMLINSON FOREMEN  
 O.A. APPROVED: Don Bice 7-7-83  
 DRAWN BY: J.C. Morehouse  
 APPROVAL: [Signature] FILLED BY: [Signature] 7-7-83



Pullman Power Products

Division of Pullman Incorporated

FIELD WAREHOUSE REQUISITION

2730/91

8.2 (05-78)

ITEM 07 LINE SPEC. 256-63-1 DATE 8-25-83  
NO N/A DETAIL DWG NO. 230-91 DDR NO. — ACT NO. 717 PAGE NO. — OF —

QUANTITY	QUANTITY DELIVERED	ITEM DESCRIPTION	P.O. NO.	ITEM NO.	HEAT NO.
4	4	5" x 1/2" TW STD A-307 C.S. GRADE B	10651	A	
REORDERED					
CLASS I MATL FOR HANGER					

APPROVED BY: *Tommy Dunning* FOREMEN  
 Q. A. APPROVED: *Lee M. Dyer* 8-25-83  
 ORDERED BY: *William Stout* 8/25/83  
 FILLED BY: *Tommy Dunning* 8-25-83  
 WHITE COPY — Q.A. CANARY COPY — WAREHOUSE PINK COPY — FIELD ENGINEERING

Pullman Power Products

FIELD WAREHOUSE REQUISITION

70/295L

PRIORITY 30

8.2 (05-78)

ITEM 7 LINE SPEC. 2-56-3489-3 SPL A DATE 8-24-83  
NO — DETAIL DWG NO. 500902 DDR NO. 70-295L ACT NO. 717 PAGE NO. 1 OF 1

QUANTITY	QUANTITY DELIVERED	ITEM DESCRIPTION	P.O. NO.	ITEM NO.	HEAT NO.
4	4	1/2" x 1/2" LG. THREADED WELD STD A307 GR. B	10651	A	
CLASS I HANGER MATERIAL					

APPROVED BY: *John Pider* 8-24-83  
 Q. A. APPROVED: *G. Brown*  
 ORDERED BY: *John Pider* 8-24-83  
 FILLED BY: *G. Brown*  
 (P. 41)



74-70-38 REV. 4/18/78  
**FIELD REQUISITION - PURCHASE ORDER - RECEIVING REPORT**

JOB NO. **7177** DATE **1-21-81** SHEET NO. **1 of 2**  
 DISCOUNT TERMS SHIPPING TERMS  
 VIA  
 VENDOR: **Cardinal Bolt**  
**3873 H. Oquendo**  
**Las Vegas, Nevada 89118**  
 SHIPPING ADDRESS: **PULLMAN POWER PRODUCTS**  
**C/O Pacific Gas & Electric Company**  
**Diablo Canyon Power Plant**  
**7 Miles North of Avila Beach, CA 93424**  
 REQ. P.O. R.R. NO. F- **7177-9287**  
 JOB COST CODE: **122** SUBCONTRACT NO.

ITEM (LETTER)	QTY. REQ/D.	DESCRIPTION	UNIT PRICE	TOTAL	DATE REC'D.	QTY. REC'D.
A	100	7/8" x 2" Mach. Bolts A307-Gr.B	1 89	189 00		
B	100	7/8" x 3" Mach. Bolts A307-Gr.B	2 26	226 00		
C	300	1/2" x 1 1/4" Mach. Bolt A307-Gr.B	58	174 00		
D	300	1/2" x 1" Mach. Bolt A307-Gr.B	56	168 00		
E	1000	3/8" Ø Heavy Hex Nuts A194-Gr.2H	22	220 00		
				<b>977 00</b>	<b>TOTAL PRICE</b>	

NOTE: SEE SPECIAL REQUIREMENTS ATTACHED

RECEIVED BY: **R. King**  
 APPROVED BY: *[Signature]*  
 PURCHASED BY: *[Signature]*  
 DATE ORDERED: **2-5-81** DATE PROMISED: **3-5 Days**  
 DWG(S) ATTACHED:  
 Hanger Stock (Wally Franklin)  
 RECEIVING DEPARTMENT  
 CARRIER:  
 COMPLETE  PARTIAL   
 PREPAID: \$ COLLECT: \$  
 RECEIVED BY:

**REIMBURSABLE**

IMPORTANT: THIS ORDER IS SUBJECT TO ALL THE TERMS AND CONDITIONS PRINTED ON THE REVERSE SIDE HEREOF.  
 OUR ORDER NUMBER MUST APPEAR ON ALL INVOICES, BILLS OF LADING, EXPRESS RECEIPTS AND CORRESPONDENCE. MARK ALL SHIPPING TAGS AND PACKAGES WITH ABOVE ORDER NUMBER.

**FIELD REQUISITION - PURCHASE ORDER - RECEIVING REPORT**

74-70-38 REV 8/15/78	JOB NO. 7177	DATE 1-21-81	SHEET NO. 2 of 2	REQ. P.O. R.R. NO. F. 7177-9287
DISCOUNT TERMS		SHIPPING TERMS		JOB COST CODE: 122
VIA		SHIPPING ADDRESS: PULLMAN POWER PRODUCTS c/o Pacific Gas & Electric Company Diablo Canyon Power Plant 7 Miles North of Avila Beach, CA 93424		SUBCONTRACT NO.
VENDOR: Cardinal Bolts 3873 W. Oquendo Las Vegas, Nevada 89118		MAIL 4 COPIES OF INVOICES TO: P. O. Box 367 Avila Beach, CA 93424		

**SPECIAL REQUIREMENTS FOR STRUCTURAL BOLTS OR FASTENERS FOR HANGERS:**

HB1. Supplier shall furnish three copies of a Manufacturer's Certificate of Compliance signed by manufacturer indicating that materials furnished are in compliance with this Purchase Order, with specifications, or as listed in suppliers or manufacturers catalog.

HB2. Certificate of Compliance shall be traceable to our Purchase Order and Item No.

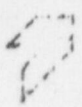
HB3. All required documentation shall be sent the day of each shipment to PULLMAN POWER PRODUCTS, P.O. Box 367, Avila Beach, CA 93424 Attn: Q.A. Dept. In addition, a copy shall accompany each shipment.

HB4. Any nonconformance to the requirements of the Purchase Order will be considered just cause for return of materials without cost to buyer.

HB5. Materials shall be domestically manufactured.

NEEDED FOR:	REMARKS	RECEIVING DEPARTMENT
DATE NEEDED:	SOURCE DOCUMENT REQUIREMENTS	CARRIER:
DWG(S) ATTACHED:	Corp. Appr. Vendor; May Use Site Appr. Vendor (All) Hanger CLI, G,E, Sprinkler Spec M-10 8724 Cardox	COMPLETE <input type="checkbox"/> PARTIAL <input type="checkbox"/>
PREPARED BY:	APPROVED BY: <i>[Signature]</i>	PREPAID: \$ COLLECT: \$
<p><b>IMPORTANT: THIS ORDER IS SUBJECT TO ALL OF THE TERMS AND CONDITIONS PRINTED ON THE REVERSE SIDE HEREOF.</b></p> <p>OUR ORDER NUMBER MUST APPEAR ON ALL INVOICES, BILLS OF LADING,</p>		RECEIVED BY:

**REIMBURSABLE**



# Pullman Power Products

## PRODUCT ENGINEERING DEPARTMENT

### QUALITY ASSURANCE AND DOCUMENTATION REQUIREMENTS

	Req'd	Approved by Customer	Verified by P.P.P. Q.C.
1. Vendor Quality Assurance Program - ASME Section III			
2. Certified Drawings for Approval			
3. Qualified Procedures for Approval			
a. Welding			
b. Weld Repairs			
c. Heat Treatment			
d. Ultrasonic			
e. Radiograph			
f. Magnetic Particle			
g. Liquid Penetrant			
h. Eddy Current			
4. Documentation			
a. Mill Reports			
b. Impact Tests			
c. Ultrasonic			
d. Radiograph			
e. Magnetic Particle			
f. Liquid Penetrant			
g. Eddy Current Results			
h. Hydrostatic			
i. Partial Data Reports ASME Section			
j. NDT Personnel Qualifications			
k. Manufacturers C of C	✓		
5. Marking per P.P.P. Standard			

CARDINAL Bolt  
7177-9287

PREPARED BY Steve B...  
APPROVED BY Blamer

DATE OF ISSUE 2/12/81  
PAGE \_\_\_\_\_ OF \_\_\_\_\_



**FIELD REQUISITION - PURCHASE ORDER - RECEIVING REPORT**

JOB NO. <b>7177</b>	DATE <b>3-29-82</b>	SHEET NO. <b>1 of 2</b>	SHIPPING TERMS	REQ. P.O. NO. F- <b>7177-10651</b>	SUBCONTRACT NO.
DISCOUNT TERMS				JOB COST CODE: <b>122</b>	
VIA				MAIL 4 COPIES OF INVOICES TO: <b>P.O. BOX 367 Avila Beach, CA 93424</b>	
SHIPPING ADDRESS: <b>Pullman Power Products c/o Pacific Gas &amp; Electric Co. Diablo Canyon Power Plant 7 Miles North of Avila Beach, CA 93424</b>				RECEIVING DEPARTMENT	
VENDOR: <b>Cardina? 3873 W. Oquendo Las Vegas, Nevada 89118</b>				CARRIER:	
DESCRIPTION				COMPLETE <input type="checkbox"/> PARTIAL <input type="checkbox"/>	
ITEM (LETTER)	QTY. REQ/D.	DESCRIPTION		UNIT PRICE	DATE REC'D. REC'D.
<b>A</b>	<b>200</b>	<b>1/2" x 1 1/2" Weld Studs W/1" THD. One End A307 GR. B</b>		<b>1 18</b>	<b>236 00</b>
		<b>C of C</b>		<b>5 00</b>	<b>5 00</b>
<b>PLEASE SEE ATTACHED SPECIAL REQUIREMENTS</b>					
<b>185 9/21/82</b>					
<b>TOTAL PRICE</b>				<b>241 00</b>	

NEEDED FOR: <b>Hanger Stock</b>	DATE ORDERED: <b>3-29-82</b>	DATE PROMISED: <b>2 weeks</b>	REMARKS
DWG(S) ATTACHED:			RECEIVED BY:  PREPAID: \$ RECEIVED BY:
APPROVED BY: <b>R. KING</b>			
<p><b>IMPORTANT:</b> THIS ORDER IS SUBJECT TO ALL OF THE TERMS AND CONDITIONS PRINTED ON THE REVERSE SIDE HEREOF.</p> <p>OUR ORDER NUMBER MUST APPEAR ON ALL INVOICES, BILLS OF LADING, EXPRESS RECEIPTS AND CORRESPONDENCE. MARK ALL SHIPPING TAGS AND PACKAGES WITH ABOVE ORDER NUMBER.</p>			

FIELD REQUISITION - PURCHASE ORDER - RECEIVING REPORT

76-38 REV. 11/11/77	JOB NO. 7177	DATE 3-29-82	SHEET NO. 2 of 2	SHIPPING TERMS	REQ. P.O. NO. F- 7177- 10651	NO. F- 7177- 10651	SUBCONTRACT NO.
SHIPPING ADDRESS: PULLMAN POWER PRODUCTS c/o Pacific Gas & Electric Company Diablo Canyon Power Plant 7 Miles North of Avila Beach, CA 93424					JOB COST CODE: 122		
VENDOR: Cardinal 3873 W. Oquendo Las Vegas, Nevada 89118					MAIL 4 COPIES OF INVOICES TO: P. O. Box 367 Avila Beach, CA 93424		
SPECIAL REQUIREMENTS FOR STRUCTURAL BOLTS OR FASTENERS FOR HANGERS:							
HB1.	Supplier shall furnish three copies of a Manufacturer's Certificate of Compliance signed by manufacturer indicating that materials furnished are in compliance with this Purchase Order, with specifications, or as listed in suppliers or manufacturers catalog.						
HB2.	Certificate of Compliance shall be traceable to our Purchase Order and Item No.						
HB3.	All required documentation shall be sent the day of each shipment to PULLMAN POWER PRODUCTS, P.O. Box 367, Avila Beach, CA 93424 Attn: Q.A. Dept. In addition, a copy shall accompany each shipment.						
HB4.	Any nonconformance to the requirements of the Purchase Order will be considered just cause for return of materials without cost to buyer.						
HB5.	Materials shall be domestically manufactured.						

NEEDED FOR:	REMARKS			RECEIVING DEPARTMENT	
DATE NEEDED:	DATE ORDERED:	DATE PROMISED:	CARRIER:		
DWG(S) ATTACHED:	SOURCE DOCUMENT REQUIREMENTS Corp. Appr. Vendor; May Use Site Appr. Vendor (All) Hanger CLI, G,E, Sprinkler Spec M-10 8/24 Cardox			COMPLETE <input type="checkbox"/>	PARTIAL <input type="checkbox"/>
PREPARED BY:	APPROVED BY:	PURCHASED BY:	PREPAID: \$	COLLECT: \$	
IMPORTANT: THIS ORDER IS SUBJECT TO ALL OF THE TERMS AND CONDITIONS PRINTED ON THE REVERSE SIDE HEREOF.			RECEIVED BY:		
OUR ORDER NUMBER MUST APPEAR ON ALL INVOICES, BILLS OF LADING, AND SHIPPING TAGS.					





PRODUCT ENGINEERING DEPARTMENT

QUALITY ASSURANCE AND DOCUMENTATION REQUIREMENTS

VERIFIED BY  
P.P.P. Q.C.

APPROVED  
BY CUSTOMER

REQ'D

1. Vendor Quality Assurance Program -  
ASME Section III

2. Certified Drawings for Approval

3. Qualified Procedures for Approval

a. Welding

b. Weld Repairs

c. Heat Treatment

d. Ultrasonic

e. Radiograph

f. Magnetic Particle

g. Liquid Penetrant

h. Eddy Current

4. Documentation

a. Mill Reports

b. Impact Tests

c. Ultrasonic

d. Radiograph

e. Magnetic Particle

f. Liquid Penetrant

g. Eddy Current Results

h. Hydrostatic

i. Partial Data Reports / SME Section

j. MPI Personnel Qualifications

k. Manufacturers C of C

5. Marking per P.P.P. Standard

Carolina  
PO # 7177-10651

PREPARED BY

APPROVED BY

*R. S. King*

*1/2/82*

FIELD REQUISITION - PURCHASE ORDER - RECEIVING REPORT

JOB NO. 7177  
DATE 4/23/83  
SHEET NO. 1 OF 2  
DISCOUNT TERMS  
SHIPPING TERMS  
FOB: SHIPPOINT

SHIPPING ADDRESS:  
PULLMAN POWER PRODUCTS  
c/o Pacific Gas & Electric Company  
Diablo Canyon Power Plant  
7 Miles North of Avila Beach, CA

REQ. P.O. NO. F-7177-12491  
R.R. NO.  
JOB COST CODE: 121  
SURCONTRACT NO.

VENDOR:  
TIM NELSON DIVISION  
2436 Mariordale Ave.  
Los Angeles, CA 90032

MAIL 4 COPIES OF INVOICES TO:

P.O. Box 367  
Avila Beach, CA 93424

VIA 1-213-222-8102 Joanne

ITEM (LETTER)	QTY. REQ'D.	DESCRIPTION	UNIT PRICE	TOTAL	DATE REC'D.	QTY. REC'D.
A	300	1/2" x 3 1/2" NELSON STUDS CPL-A-108 Gr. 1010-1020 P.M. 4/25/83	C 191 90	575 70		
B	1000	1/2" x 2 1/2" NELSON STUDS CPL-A108 1010-1020	m 684 90	684 90		
				1260 60		

SEE SPECIAL REQUIREMENTS ATTACHED:

TOTAL PRICE

NEEDED FOR: COMPT. LINER. CLASS 1 HGR. MAT.

DATE NEEDED: ASAP  
DATE ORDERED: 4-21-83  
DATE PROMISED: STOCK

DWG(S) ATTACHED:

PREPARED BY: PAT MALLOY  
APPROVED BY: *[Signature]*  
PURCHASED BY: *[Signature]*

IMPORTANT: THIS ORDER IS SUBJECT TO ALL OF THE TERMS AND CONDITIONS PRINTED ON THE REVERSE SIDE HEREOF.

OUR ORDER NUMBER MUST APPEAR ON ALL INVOICES, BILLS OF LADING, EXPRESS RECEIPTS AND CORRESPONDENCE. MARK ALL SHIPPING TAGS AND PACKAGES WITH ABOVE ORDER NUMBER.

REMARKS

RECEIVING DEPARTMENT

CARRIER:

COMPLETE  PARTIAL

PREPAID: \$ COLLECT: \$

RECEIVED BY:

REIMBURSABLE



FIELD REQUISITION - PURCHASE ORDER - RECEIVING REPORT

REQ. NO. F- 7177-12491  
 P.O. NO. F- 7177-12491  
 R.R. NO. F- 7177-12491  
 JOB COST CODE: 121  
 SUBCONTRACT NO.

SHIPPING ADDRESS: PULLMAN POWER PRODUCTS  
 c/o Pacific Gas & Electric Company  
 Diablo Canyon Power Plant  
 7 Miles North of Avila Beach, CA 93424

DATE: 4/23/83  
 SHEET NO. 2 OF 2  
 SHIPPING TERMS

VENDOR: TWR NELSON DIVISION  
 2436 Mariondale Ave.  
 Los Angeles, CA 90032

MAIL 4 COPIES OF INVOICES TO:  
 P. O. Box 367  
 Avila Beach, CA 93424

SPECIAL REQUIREMENTS FOR STRUCTURAL BOLTS GR-FASTENERS FOR HANGERS:

- 11B1. Supplier shall furnish three copies of a Manufacturer's Certificate of Compliance signed by manufacturer indicating that materials furnished are in compliance with this Purchase Order, with specifications, or as listed in suppliers or manufacturers catalog.
- 11B2. Certificate of Compliance shall be traceable to our Purchase Order and Item No.
- 11B3. All required documentation shall be sent the day of each shipment to PULLMAN POWER PRODUCTS, P.O. Box 367, Avila Beach, CA 93424 Attn: Q.A. Dept. In addition, a copy shall accompany each shipment.
- 11B4. Any nonconformance to the requirements of the Purchase Order will be considered just cause for return of materials without cost to buyer.
- 11B5. Materials shall be domestically manufactured.

RECEIVING DEPARTMENT

CARRIER:

COMPLETE  PARTIAL   
 PREPAID: 3 COLLECT: 5  
 RECEIVED BY:

REMARKS  
 SOURCE DOCUMENT REQUIREMENTS  
 Corp. Appr. Vendor; May Use  
 Site Appr. Vendor  
 (All) Hanger CLI, G,E, Sprinkler  
 Spec M-10  
 9724 Cardox

NEEDED FOR:

DATE ORDERED: 4-27-83 DATE PROMISED:

PREPARED BY: [Signature] PURCHASED BY: [Signature]

IMPORTANT: THIS ORDER IS SUBJECT TO ALL OF THE TERMS AND CONDITIONS PRINTED ON THE REVERSE SIDE HEREOF.

OUR ORDER NUMBER MUST APPEAR ON ALL INVOICES, BILLS OF LADING, EXPRESS RECEIPTS AND CORRESPONDENCE. MARK ALL SHIPPING TAGS AND PACKAGES WITH ABOVE ORDER NUMBER.



# Pullman Power Products

## PRODUCT ENGINEERING DEPARTMENT

### QUALITY ASSURANCE AND DOCUMENTATION REQUIREMENTS

	REQ'D	APPROVED BY CUSTOMER	VERIFIED BY P.P.P. Q.C.
Vendor Quality Assurance Program - ASME Section III			
Certified Drawings for Approval			
Qualified Procedures for Approval			
a. Welding			
b. Weld Repairs			
c. Heat Treatment			
d. Ultrasonic			
e. Radiograph			
f. Magnetic Particle			
g. Liquid Penetrant			
h. Eddy Current			
Documentation			
a. Mill Reports			
b. Impact Tests			
c. Ultrasonic			
d. Radiograph			
e. Magnetic Particle			
f. Liquid Penetrant			
g. Eddy Current Results			
h. Hydrostatic			
i. Partial Data Reports ASME Section			
j. NDT Personnel Qualifications	✓		
k. Manufacturers C of C			
Marking per P.P.P. Standard			
<p>TRW Nelson Div. P.O. # 7177-12491</p>			

10

PREPARED BY R.C. King

DATE OF ISSUE 4-25-83



(3) EXAMPLE DR'S TO  
ILLUSTRATE HOW DR'S  
ARE HANDLED BY PG&E  
& PULLMAN

1. Doesn't feel telephone  
dispositions are acceptable  
and telecon dispositions  
are not adequate and  
used to cover up  
discrepancies.

# THE M.W. KELLOGG COMPANY

A DIVISION OF PULLMAN INCORPORATED

D.R. NO. 5231  
 ISO. NO. 501520  
 UNIT NO. II  
 CODE NO. 3/B

10 CFR-21  
 (IS) or (IS NOT)  
 ATTACHED

## DISCREPANCY REPORT

CUSTOMER: Pacific Gas & Electric SPEC. NO.: 8711 DATE: 8-25-83  
 PROJECT: Diablo Canyon JOB NO.: 7177 INSPECTOR: S. DUMMER / R. NOLLE

DISCREPANT ITEM: MIN. WALL VIOLATION REF DCN 1534-019 ITEM #1 (D)

EXPLANATION OF DISCREPANCY: AFTER BLENDING OF GOUGE PER DCN Q.C. N.D.E. TECH. FOUND AN AREA OUTSIDE OF THE BLENDED PORTION OF PIPE. REASON FOR LOW WALL CONDITION ON UNGROUND PORTION OF PIPE IS INDETERMINATE. PIPE HAS BEEN BENT FOR INSTALLATION. SEE ATTACHED SKETCH.

PG&E G.C.  
QUALITY CONTROL

REVIEWED [Signature]  
 DATE 9/1/83

LINE # 2-53-2377-6

RECOMMENDED DISPOSITION: INDICATE APPROVAL BY CIRCILING THE APPROPRIATE RECOMMENDED DISPOSITION

- REPAIR AREA PER THE FOLLOWING PROCEDURE.
  - A. VISUALLY INSPECT AFFECTED AREA.
  - B. BUILD UP WALL THICKNESS, BLEND, GRIND TO A SMOOTH AND UNIFORM PIPE SURFACE.
  - C. P.T. AFFECTED AREA.
  - D. U.T. AFFECTED AREA.
  - E. R.T. AFFECTED AREA.
  - F. INCLUDE REPAIR IN SECONDARY HYDRO.
- ACCEPT AS IS. "REF. TEL-CON 8-26-83 FROM C. NICHOLS."
- PG&E TO DISPOSITION.

[Signature] 8/31/83

Approved By: M.W.K. Field Q.A. Mgr. [Signature] Date 8/26/83 Customer R. Justice Date 8-31-83

FINAL DISPOSITION:  In Accordance With Above [Signature] #2 Date: 8/9/83  Other (explanation and approval required)  
 Work Completed Insp: [Signature] Date: 8/9/83 Work Completed Insp: \_\_\_\_\_ Date: \_\_\_\_\_

EXPLANATION (IF NECESSARY):  
SEE SK

## FOR INFORMATION ONLY

M.W.K. Field Q.A. Manager \_\_\_\_\_ Date \_\_\_\_\_ Customer \_\_\_\_\_ Date \_\_\_\_\_

STEPS TO PREVENT RECURRENCE  Not Applicable Q.C. MONTHLY SURVEILLANCE PROGRAMS AND HYDRO WALK DOWNS ARE IN EFFECT. MEMO DATED 7-21-83 FROM RESIDENT CONSTRUCTION MANAGER TO ALL CRAFT CONCERNING PROTECTING PIPE FROM DAMAGE. (CAUSE OF LOW WALL CONDITION IS UNKNOWN IN UNGROUND AREA.) [Signature] 8/26/83  
 Field Q.A. Manager [Signature]

DISTRIBUTION:  Master Q.A. File  Auth. Insp.  Engineering Dept.  Other \_\_\_\_\_  
 Customer  Receiving  Field Inspector ( \_\_\_\_\_ )

ATTACH SKETCH IF NECESSARY

547 193A



PULLMAN POWER PRODUCTS

THICKNESS REPORT

IR# 501520 Appendix I

ESD 244 REV. 3-17-82

PART/ITEM NAME ISO # 501520 EQUIPMENT Nortac  
 LOCATION DCW # UNIT 2 DOME MODEL 120  
 PART SERIAL NUMBER DCW # 1534-019 D.R. NUMBER N/A  
 REFERENCE BLOCK, IF OTHER THAN ONE SUPPLIED 1104-S MATERIAL SS  
 INSTRUMENT  
 SERIAL NUMBER 1104 THICKNESS-STEP #1 .200 STEP #2 .300 STEP #3 .400

COMMENTS: UT Thickness verification of gauge area. Thickness in  
Gauge Area measured by dial indicator to .026 from surface of  
pipe. ADJACENT AREA IN PIPE WAS ground. A .304 Reading was taken from this  
with a Nortac. Readings will taken from unground material to determine

ACTUAL JOUSE DEPTH.

NOM. WALL .322

MIN. WALL .282

ACTUAL WALL .279

See X-RAYS ON ATTACHED SHEET

RESECTABLE.

FOR INFORMATION ONLY

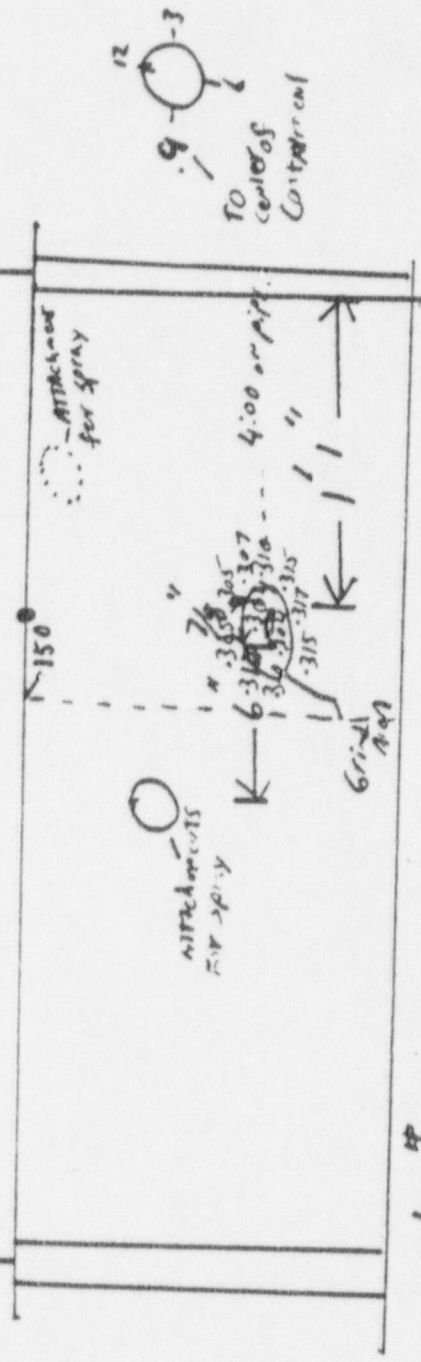
FOR INFORMATION ONLY

U.T. CALIBRATION READING see ABOVE  
 MICROMETER READING NA  
 MICROMETER SERIAL # NA  
 DATE 8-31-83

INSPECTOR: Ronald J. Schmitz

20/61

↑ TO CENTER OF CONTAINMENT



Line # 2-53-2376-8 (Sony Ring)  
 Iso # 505120

Gage measured .026 with dial indicator

Doc # 1534-018

.310	.315	.305	NOMINAL. .322
-.026	-.026	-.026	LUMINAL. .282
<u>.284</u>	<u>.289</u>	<u>.279</u>	ACTUAL. .279

Done by R. Schitz

FOR INFORMATION ONLY



PULLMAN POWER PRODUCTS

THICKNESS REPORT

Appendix I

ESD 244

REV. 3-17-82

PART/ITEM NAME ISO # 501520 EQUIPMENT NOTEC

LOCATION Unit 2 DOME MODEL 120

PART SERIAL NUMBER DCN # 1534-015 340°-10° D.R. NUMBER NA

REFERENCE BLOCK, IF OTHER THAN ONE SUPPLIED <sup>SN</sup> 1103-51 MATERIAL SS

INSTRUMENT

SERIAL NUMBER 1103 THICKNESS-STEP #1 .200 STEP #2 .300 STEP #3 .400

COMMENTS: U.T Thickness verification on low wall area marked on  
line by others. Line # 2-53-2375-6. Area shown in attached  
Sketch.

NOM. WALL .280

MIN. WALL .245

ACTUAL WALL .233 lowest reading

RESEALABLE

FOR INFORMATION ONLY

U.T. CALIBRATION READING See ABOVE

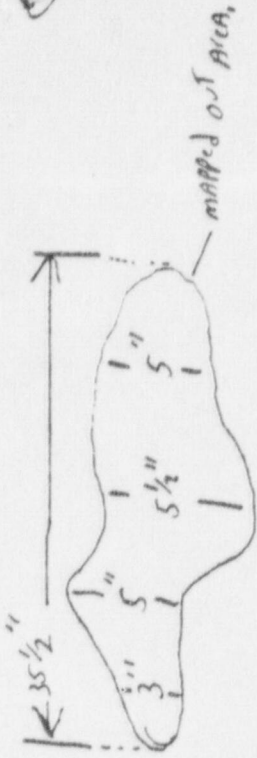
MICROMETER READING NA

MICROMETER SERIAL # NA

DATE 8-31-83

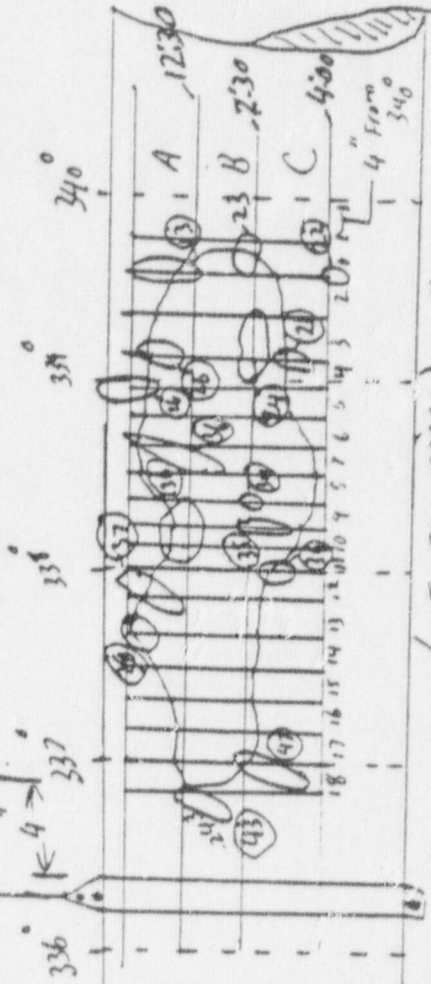
INSPECTOR: Richard J. Schmitz

FOR INFORMATION ONLY



4 1/4 / 3R

336  
4  
337



AREA MAPPED OUT BY OTHERS.

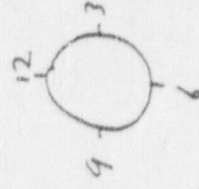
(NOT TO SCALE) 2 SQUARES

AREAS IN Red ARE GRIND AREAS WITHIN THE MAPPED OUT LOW AREA.

LINE # 2-53-2375-6

ISO # 501520

DCN # 1534-015 340° - 10°



Looking Toward 340°

A	248	245	245	235	242	233	235	240	240	240	240	243	243	245	243	245	245
B	245	245	240	245	245	242	242	245	243	245	243	243	245	245	243	245	245
C	250	248	242	245	245	245	247	245	250	250	250	250	250	250	253	253	257

Readings Are The Lowest for each 2" Square.

Drawn By AJS 8/5/5





# Pullman Power Products

10 CFR-21  
(IS) or (IS NOT)  
ATTACHED

## DISCREPANCY REPORT

D.R. NO. 5266  
ISO. NO. 501520  
UNIT NO. II  
CODE NO. 3/8

CUSTOMER: Pacific Gas & Electric SPEC. NO.: 8711 DATE: September 3, 1983  
SUBJECT: Diablo Canyon JOB NO.: 7177 INSPECTOR: Riewer/Nulle

DISCREPANT ITEM: MINIMUM WALL VIOLATION.

REF: DCN #1534-018 (Item #1)

EXPLANATION OF DISCREPANCY:

After blending of gouges in two areas, NDE Technician found low wall conditions on Line #2-53-2376-8. See attached sketch. B31.7 Class B pipe.

PG&E G.C.  
QUALITY CONTROL  
REVIEWED  
T. E. [Signature]  
DATE 9/9/83

RECOMMENDED DISPOSITION:

INDICATE APPROVAL BY CIRCLING THE APPROPRIATE "RECOMMENDED DISPOSITION"



Issue appropriate Process sheets to repair the affected area using the following procedure:

- A. Visually inspect affected area.
- B. Build up wall thickness, blend, grind to a smooth and uniform pipe surface.
- C. PT affected area.
- D. UT affected area.
- E. RT affected area.
- F. Include repair in containment spray hydro;

OR,  
(2) Accept as-is; PER ATTACHED TELG-CON FROM CLYDE NICHOLS DATED 9-7-83, FILE # 146.10

Approved By P.P.P. Field Q.A. Mgr. [Signature] Date 9-3-83 Customer [Signature] Date 9/9/83 (Continued page 2)

FINAL DISPOSITION:  In Accordance With Above #2  
Work Completed Insp: [Signature] Date: 9/9/83

Other (explanation and approval required)  
Work Completed Insp: \_\_\_\_\_ Date: \_\_\_\_\_

EXPLANATION (IF NECESSARY):

# FOR INFORMATION ONLY

P.P.P. Field Q.A. Manager \_\_\_\_\_ Date \_\_\_\_\_ Customer \_\_\_\_\_ Date \_\_\_\_\_

STEPS TO PREVENT RECURRENCE  Not Applicable QC surveillance and hydro walkdowns are in effect.  
Memo dated 7-21-83 from Resident Construction Manager to All Craft concerning protecting pipe from damage.

DISTRIBUTION:  Master Q.A. File  Auth. Insp.  Engineering Dept.  Other \_\_\_\_\_  
 Customer  Receiving  Field Inspector ( \_\_\_\_\_ )  
Field Q.A. Manager [Signature] 9-3-83

ATTACH SKETCH IF NECESSARY

5 48 144A



# Pullman Power Products

10 CFR-21  
(IS) or (IS NOT)  
ATTACHED

## DISCREPANCY REPORT

D.R. NO. 5266  
ISO. NO. 501520  
UNIT NO. 1  
CODE NO. 3/8

CUSTOMER: Pacific Gas & Electric SPEC. NO: 8711 DATE: September 3, 1983  
PROJECT: Diablo Canyon JOB NO.: 7177 INSPECTOR: Riewer/Nolle

RECOMMENDED DISPOSITION: (Continued from page 1)

OR,

PGandE to disposition.

FOR INFORMATION ONLY





# Pullman Power Products

10-CPR-21

(3) THIS NOT ATTACHED

## DISCREPANCY REPORT

D.R. NO. 5267

ISO. NO. 501520

UNIT NO. II

CODE NO. 3/8

CUSTOMER: Pacific Gas & Electric SPEC. NO.: 8711 DATE: September 3, 1983 '7-

PROJECT: Diablo Canyon JOB NO.: 7177 INSPECTOR: Schmidt/Nolle Nolle

DISCREPANT ITEM: MINIMUM WALL VIOLATION. REFERENCE: DCN 1534-018 Item #1

### EXPLANATION OF DISCREPANCY:

After blending of gouge per DCN (Item #1) NDE Technician found low wall condition on Line #2-53-2376-8. B31.7 Class B pipe.

See Page 2

**QUALITY CONTROL**  
**DIABLO CANYON**  
 REVIEWED & APPROVED BY  
*J. E. [Signature]*  
 DATE 9/7/83

RECOMMENDED DISPOSITION: INDICATE APPROVAL BY CIRCLING THE APPROPRIATE "RECOMMENDED DISPOSITION" See Page 2

~~XX~~

Issue Process Sheet to repair as follows:

- A. Visually inspect affected area.
- B. Build up wall thickness, blend, grind to a smooth and uniform pipe surface.
- C. PT affected area.
- D. UT affected area.
- E. RT affected area.
- F. Include repair in containment spray hydro;

PRIORITY 400

OR,

~~XX~~

Accept as-is;

OR,

(3)

PGandE to disposition.

*(BLEND GRIND THE GOUGED AREA TO PROVIDE A SMOOTH TRANSITION BETWEEN THE GOUGE AREA AND THE ADJACENT PIPE. UPON COMPLETION OF GRINDING, RE-UT THE AREA AND RESUBMIT TO PG&E FOR FINAL DISPOSITION.)*

Approved By P.P.P. Field Q.A. Mgr. *[Signature]* Date 9-3-83 Customer *[Signature]* Date 9/7/83

FINAL DISPOSITION:  In Accordance With Above

Other (explanation and approval required) # 1

Work Completed Insp: \_\_\_\_\_ Date: \_\_\_\_\_

Work Completed Insp: *[Signature]* Date: 10/3/83

### EXPLANATION (IF NECESSARY):

Added results of blending and U.T. examination.

P.P.P. Field Q.A. Manager *[Signature]* Date 9/2/83 Customer *[Signature]* Date 10-3-83

STEPS TO PREVENT RECURRENCE  Not Applicable QC surveillance and hydro walkdowns are in effect.

Memo dated 7-21-83 from Resident Construction Manager to All Craft concerning protecting pipe from damage.

Field C.A. Manager *[Signature]* 9-3-83

TRIBUTATION:  Master Q.A. File  Auth. Insp.  Engineering Dept.  Other \_\_\_\_\_  
 Customer  Receiving  Field Inspector ( \_\_\_\_\_ )


ATTACH SKETCH IF NECESSARY

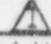

PRIORITY 400

49  
1983


10 CFR-21  
(IS) or (IS NOT)  
ATTACHED

DISCREPANCY REPORT


DR NO. 5267   
ISO. NO. 501520  
UNIT NO. II  
CODE NO. 3/8


CUSTOMER: Pacific Gas & Electric SPEC. NO.: 8711 DATE: 9-3-83  9-27-83  
PROJECT: Diablo Canyon JOB NO.: 7177 INSPECTOR: Schmidt/Nolle  Nolle

Page Two:


 Explanation of Discrepancy: (cont.)

Clarification of condition identified as a gouge and violation of minimum wall: Area in question was a depression and slight nick in pipe and not a gouge and had not blended as stated above. Reject of area was based upon NDE Technicians using a Dial Depth Indicator of the depression and slight nick. See attached sketch #1. After blending the depression and slight nick to a 2.5 to 1 taper the U.T. Technician was able to make an accurate reading by U.T. It was found that the depression and nick did not violate minimum wall. See attachment #2.

 Recommended Disposition: (cont.)

 4. Accept as is. Minimum wall not violated.

~~~~

~~~~ 5. PG&E to disposition.

*W. J. Paul*

FOR INFORMATION ONLY





# Pullman Power Products

10, CFR-21

(ISI) OF IS NOT  
ATTACHED

## DISCREPANCY REPORT

D.R. NO. 5268  
ISO. NO. 501520  
UNIT NO. II  
CODE NO. 3/8

CUSTOMER: Pacific Gas & Electric SPEC. NO.: 8711 DATE: September 3, 1983  
PROJECT: Diablo Canyon JOB NO.: 7177 INSPECTOR: Christians/Nolle

DISCREPANT ITEM: MINIMUM WALL VIOLATION. REF. DCN #1534-015 (Item #1)

EXPLANATION OF DISCREPANCY:

After blending of gouges per DCN (Item #1) NDE Technician found low wall condition on Line #2-53-2375-6. See attached sketches. B31.7 Class B pipe. Portion of pipe below minimum wall is an area that has not been ground or blended. Reason for low wall condition in area of unground portion of pipe is indeterminate.

NOTE: Pipe has been bent for installation.

PG&E G.C.  
QUALITY CONTROL  
REVIEWED  
T.E. Smith  
DATE 9/9/83

RECOMMENDED DISPOSITION: INDICATE APPROVAL BY CIRCLING THE APPROPRIATE "RECOMMENDED DISPOSITION"

- Prepare appropriate Process Sheets to repair affected area using the following procedure:
- A. Visually inspect affected area.
  - B. Build up wall thickness, blend, grind to a smooth and uniform pipe surface.
  - C. PT affected area.
  - D. UT affected area.
  - E. RT affected area.
  - F. Include repair in containment spray hydro;

OR,

(2)

Accept as-is; PER ATTACHED TELE-CON FROM CLYDE NICHOLS  
DATE 9-7-83 FILE # 146.10 (Continued - page 2)

Approved By P.P.P. Field Q.A. Mgr. F. Spauter Date 9-3-83 Customer [Signature] Date 9/9/83

FINAL DISPOSITION:  In Accordance With Above, 42  
Work Completed Insp: [Signature] Date: 9/9/83

Other (explanation and approval required)  
Work Completed Insp: \_\_\_\_\_ Date: \_\_\_\_\_

EXPLANATION (IF NECESSARY):

# FOR INFORMATION ONLY

P.P.P. Field Q.A. Manager \_\_\_\_\_ Date \_\_\_\_\_ Customer \_\_\_\_\_ Date \_\_\_\_\_

STEPS TO PREVENT RECURRENCE  Not Applicable QC surveillance and hydro walkdowns are in effect.  
Memo dated 7-21-83 from Resident Construction Manager to All Craft concerning protecting pipe from damage.

DISTRIBUTION:  Master Q.A. File  Auth. Insp.  Engineering Dept.  Other \_\_\_\_\_  
 Customer  Receiving  Field Inspector ( \_\_\_\_\_ )  
Field Q.A. Manager F. Spauter 9-3-83

ATTACH SKETCH IF NECESSARY

5  
~~46A~~ 50



# Pullman Power Products

10 CFR-21  
(IS) or (IS NOT)  
ATTACHED

## DISCREPANCY REPORT

D.R. NO. 5268 Page 2  
ISO. NO. 501520  
UNIT NO. 11  
CODE NO. 3/8

CUSTOMER: Pacific Gas & Electric SPEC. NO.: 8711 DATE: September 3, 1983  
PROJECT: Diablo Canyon JOB NO.: 7177 INSPECTOR: Christians/Nolle

RECOMMENDED DISPOSITION: (Continued from Page 1)

~~X~~ OR,  
PGandE to disposition.

FOR INFORMATION ONLY

DIABLO CANYON PROJECT

TELEPHONE CALLS

030785

M. FARNER

M. TRESLER

L. SHIPEN

E. BACHNIK

ROUTE

FROM CUIDE NICHOLS OF PSE

FILE 146:10

DATE 9/7/83

TO STAN FRENIS-LAWRENCE OF GC

JOB NO. 16320

TIME 8:30 A

ITEMS OF DISCUSSION

ACTION REQ'D. (INCLUDE NAMES & DATES)

RE: MIN WALL FOR LINES  
2-53-2375 & 2-53-2376

THE CALCULATED MIN WALL  
FOR THESE LINES IS AS  
FOLLOWS

2-53-2375 - 6"  
 $t_m = 0.104''$

2-53-2376 - 8"  
 $t_m = 0.148''$

THE CONDITIONS OF MIN WALL VIOLATIONS  
OF .231 THRU .242 FOR LINE # 2375  
AND .278 THRU .279 FOR LINE # 2376  
ARE ACCEPTABLE -

FOR

*Cuide Nichols*



FORM 7000  
REV. 1-82

STEEL PIPE FITNESS

INSPECTION REPORT

Appendix I

ISE 1--

REV. 3-17-82

PART ITEM NAME J50 501520 EQUIPMENT Nortec  
 LOCATION Unit 2 Dome MODEL 120  
 PART SERIAL NUMBER DCN # 1534-015 D.R. NUMBER N/A  
 REFERENCE BLOCK, IF OTHER THAN ONE SUPPLIED <sup>1104</sup> S-1 MATERIAL SS  
 INSTRUMENT  
 SERIAL NUMBER 1104 THICKNESS-STEP #1 .400 STEP #2 .300 STEP #3 .200  
 COMMENTS: UT Blended Gauge and Arc Strike Areas  
2-53-2375-6

NOM. WALL .280

MIN. WALL .245

ACTUAL WALL

.239

Lowest Reading

is this backed up by  
P/T calculations

The Following Items  
Are Acceptable  
Wall thickness MM 8-31-83

- 5
- 7
- 9
- 13
- 19
- 20
- 30
- 32
- 39 through 42
- 48 through 69
- 71 through 109

The Following Items are  
Rejectable Low Wall  
Condition. MM 8-31-83

- 43 } These Are Covered on Rick Schmitz
- 37 } UT Cert on 8-31-83 for DCN#
- 70 } 1534-015.
- 70 } Item 70 is mapped out on
- } the back of this sheet

FOR INFORMATION ONLY  
FOR INFORMATION ONLY

D.R. CALIBRATION READINGS See Above

MICROMETER READING N/A

MICROMETER SERIAL # N/A

DATE 8-31-83

INSPECTOR: and list



# Pullman Power Products

10 CFR-21  
(IS) or (IS NOT)  
ATTACHED

## DISCREPANCY REPORT

D.R. NO. 5269  
ISO. NO. 501520  
UNIT NO. II  
CODE NO. 3/8

CUSTOMER: Pacific Gas & Electric SPEC. NO.: 8711 DATE: September 3, 1983  
PROJECT: Diablo Canyon JOB NO.: 7177 INSPECTOR: Hintz/Nolle

RECOMMENDED DISPOSITION: (Continued from Page 1)

- OR,  
3) PGandE to disposition.

FOR INFORMATION ONLY



# Pullman Power Products

10 CFR-21

SI or IS NOT  
ATTACHED

D.P. NO. 5269  
CO. NO. 501520  
UNIT NO. 11  
CODE NO. 3/8

## DISCREPANCY REPORT

CUSTOMER Pacific Gas & Electric SPEC. NO. 8711 DATE: September 3, 1983  
PROJECT: Diablo Canyon JOB NO.: 7177 INSPECTOR: Hintz/Nolle

DISCREPANT ITEM: VIOLATION OF MINIMUM WALL CONDITION. REF: DCN #1534-015 (ITEM #1)

### EXPLANATION OF DISCREPANCY:

After blending of gouge per DCN (Item #1) NDE Technician found low wall condition on Line #2-53-2375-6. See attached sketch. B31.7 Class B pipe.

PG&E G.C.  
QUALITY CONTROL  
REVIEWED  
T.E. Hintz  
DATE 9/21/83

RECOMMENDED DISPOSITION: INDICATE APPROVAL BY CIRCLING THE APPROPRIATE "RECOMMENDED DISPOSITION"

- Repair affected area per the following procedure, and prepare appropriate Process Sheets to perform work:
- A. Visually inspect affected area.
  - B. Build up wall thickness. Blend grind to a smooth and uniform pipe surface.
  - C. PT affected area.
  - D. UT affected area.
  - E. RT affected area.
  - F. Include repair in containment spray hydro;

OR,  
(2)

Accept as-is; PER ATTACHED 9-7-83 TELE COM FROM CLYDE NICHOLS TO STAN FURNIS - LAWRENCE FILE # 146.10 (Continued - page 2)

Approved By P.P.P. Field Q.A. Mgr. [Signature] Date 9-3-83 Customer [Signature] Date 9/21/83

SIGNAL DISPOSITION  In Accordance With Above

Other (specification and approval required)

Work Completed Inset: [Signature] Date: 9/21/83

Work Completed Inset: \_\_\_\_\_ Date: \_\_\_\_\_

EXPLANATION (IF NECESSARY):

# FOR INFORMATION ONLY

P.P.P. Field Q.A. Manager \_\_\_\_\_ Date \_\_\_\_\_ Customer \_\_\_\_\_ Date \_\_\_\_\_

STEPS TO PREVENT RECURRENCE:  Not Applicable  QC surveillance and hydro walkdowns are in effect. Memo dated 7/31/83 from Resident Construction Manager to All Craft concerning protecting pipe from damage.

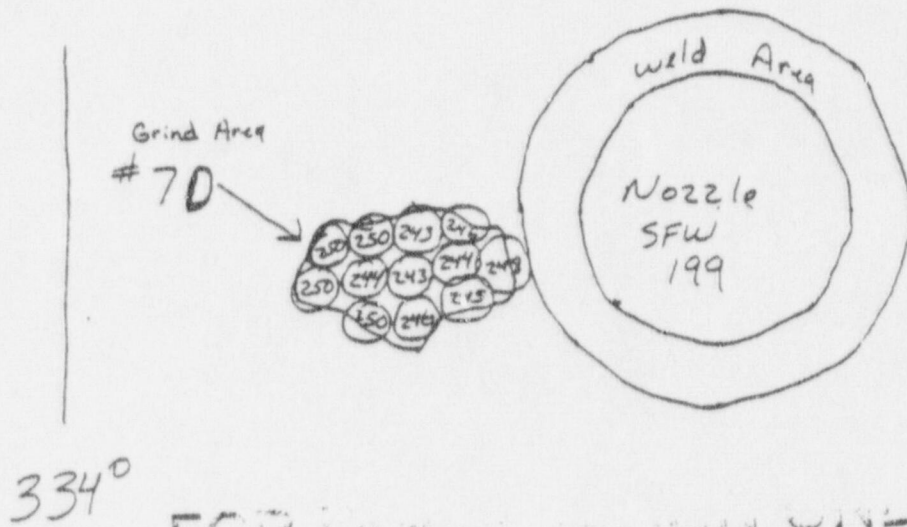
DISTRIBUTION:  Master Q.A. File  Auth. Insp.  Engineering Dept.  Other \_\_\_\_\_  
 Customer  Receiving  Field Inspector: \_\_\_\_\_

ATTACH SKETCH IF NECESSARY

J 51. ~~1111~~



FOR INFORMATION ONLY



FOR INFORMATION ONLY

Top View Looking Down

Full Scale

Center of Cond.  
↓

Backside of U.T.  
Report Dated 8-31-83  
ISO 501520  
DCN # 1534-015  
MH 8-31-83  
Pg. 4

# Pullman Power Products

10 CFR-21  
(IS) or (IS NOT)  
ATTACHED

## DISCREPANCY REPORT

D.R. NO. 5370  
ISO. NO. 2-501520  
UNIT NO. II  
CODE NO. 8

CUSTOMER: Pacific Gas & Electric SPEC. NO.: 8711 DATE: 9-30-83  
PROJECT: Diablo Canyon JOB NO.: 7177 INSPECTOR: Lowrie/Oldson

DISCREPANT ITEM: ROOM #140-FG-1 SYSTEM 12  
LOW WALL CONDITION ON LINE 2-S3-2371-6 CODE CLASS "B"

EXPLANATION OF DISCREPANCY:

While grinding to remove a gouge per DCN 1534-016, Item #57, a low wall condition was created on Line 2-S3-2371-6. A copy of the thickness report is attached to help locate the low wall area.

PG&E G.C.  
QUALITY CONTROL  
REVIEWED  
T.E. Quinn  
DATE 10/4/83

RECOMMENDED DISPOSITION: INDICATE APPROVAL BY CIRCLING THE APPROPRIATE "RECOMMENDED DISPOSITION"

- Process sheet to be issued to do the following:
  - A. Clean low wall area.
  - B. Repair low wall condition by adding weld metal. FW A5370.
  - C. Grind to blend repair area.
  - D. Clean repair area.
  - E. PT repair area.
  - F. RT repair area.
  - G. UT repair area.
  - H. Include Base Metal Repair in forthcoming Hydro;

DR,  
(2) Accept as-is; REFERENCE ATTACHED TELECON (PAGE 50FS)  
FROM CLYDE NICHOLS TO G. HAUSE  
DATED 10-3-83. Continued - Page 2

Approved By P.P.P. Field Q.A. Mgr. T. Sparty Date 10-1-83 Customer [Signature] Date 10/4/83

FINAL DISPOSITION:  In Accordance With Above DR  
Work Completed Insp: [Signature] Date: 10/4/83  
 Other (explanation and approval required)  
Work Completed Insp: \_\_\_\_\_ Date: \_\_\_\_\_

EXPLANATION (IF NECESSARY):

# FOR INFORMATION ONLY

P.P.P. Field Q.A. Manager \_\_\_\_\_ Date \_\_\_\_\_ Customer \_\_\_\_\_ Date \_\_\_\_\_

STEPS TO PREVENT RECURRENCE  Not Applicable Superintendent to instruct foremen and craft to use extra care when working near process pipe.

DISTRIBUTION:  Master Q.A. File  Auth. Insp.  Engineering Dept.  Other \_\_\_\_\_  
 Customer  Receiving  Field Inspector ( \_\_\_\_\_ )

ATTACH SKETCH IF NECESSARY

PRIORITY 400

PAGE 1 OF 5 562 198-A



# Pullman Power Products

10 CFR-21  
(IS) or (IS NOT)  
ATTACHED

## DISCREPANCY REPORT

D.R. NO. 5370 - page 2  
ISO. NO. 2-501520  
UNIT NO. II  
CODE NO. 8

CUSTOMER: Pacific Gas & Electric SPEC. NO.: 8711 DATE: 9-30-83  
PROJECT: Diablo Canyon JOB NO.: 7177 INSPECTOR: Lowrie/Oldson

RECOMMENDED DISPOSITION: (continued from page 1)

OR,



PG&E to disposition.

FOR INFORMATION ONLY



PART/ITEM NAME I50 2-501520 EQUIPMENT Nortec

LOCATION Curt II, Dome, Elev 256, 180° S.S. 12C9 MODEL UAT-120

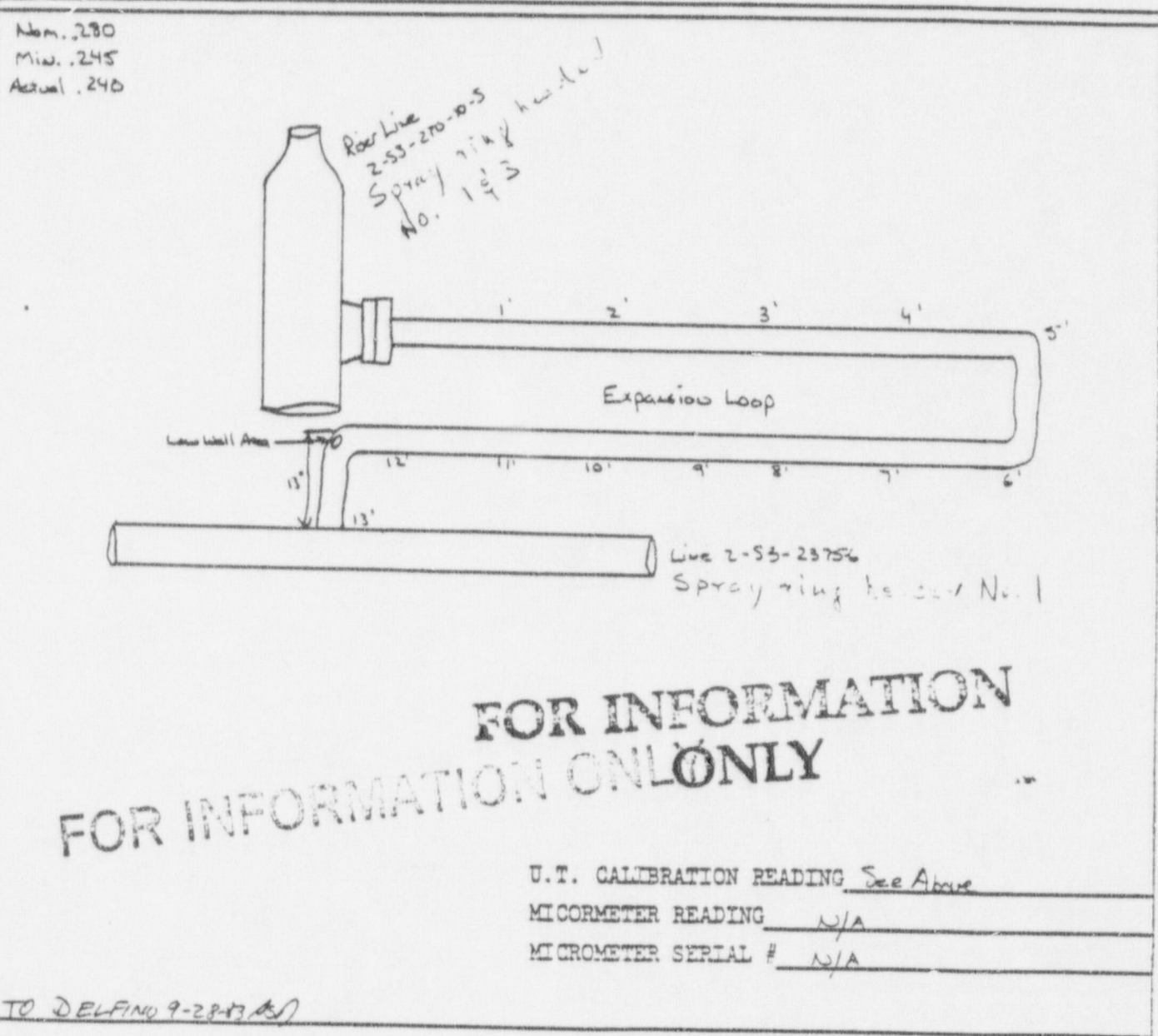
PART SERIAL NUMBER Expansion Loop D.R. NUMBER DCU # 1534-016

REFERENCE BLOCK, IF OTHER THAN ONE SUPPLIED 1103-51 MATERIAL SS, Sch. 40, 6"

SERIAL NUMBER 1103 THICKNESS-STEP #1 .200 STEP #2 .300 STEP #3 .400

COMMENTS: U.T. Inspection area Item #57, 3/4" x 3/4" reject on outside bend of pipe.

Hold Tag "Only" 1672-003 Low Wall @ .240, A.R. Pending.



INSPECTOR: Scott Oldson 11072

# Diablo Canyon Project



PACIFIC GAS AND ELECTRIC COMPANY  
BECHTEL POWER CORPORATION

FACSIMILE COVER LETTER

1/2

TIME: \_\_\_\_\_  
DATE: 10/3/83 SHEET: 1 OF 2

TO: \_\_\_\_\_  
COMPANY: GC-JOBSITE

CITY & STATE: \_\_\_\_\_

ATTENTION: GUY HARSE - GC

TELEPHONE NUMBER OF TELECOPIER:  
JOBSITE (GC): 805-595-2060  
JOBSITE (MPO): \_\_\_\_\_  
ON-SITE: \_\_\_\_\_  
OTHER: \_\_\_\_\_

TOTAL NUMBER OF PAGES, INCLUDING COVER LETTER: \_\_\_\_\_  
IF YOU DO NOT RECEIVE ALL THE PAGES, PLEASE CALL ILEANA/ALBA (415) 768-5422  
TRANSMITTAL SPEED: \_\_\_\_\_ MINUTES

WE ARE TRANSMITTING FROM A PANAFAX MY1200 AUTOMATIC MACHINE (415) 768-1667

CONFIRMATION NUMBER: 805-541-7505  
FROM: CLYDE NICHOLS EXTENSION: 8-0293

SPECIAL INSTRUCTION: FOR INFORMATION ONLY

TIME SENT OUT:  
0022P/001P

P.O. BOX 2965 • SAN FRANCISCO, CALIFORNIA 94119

DR 5370 PAGE 4 OF 5



# TELEPHONE CALLS <sup>4/2</sup>

ROUTE	V. PICKER 1123
	D. G. 7.5.47
	K. 53-11118

FROM LINDA NICHOLS OF PSE FILE 146, 10 DATE 10/3,  
 TO GUY HANSE OF GAC JOB NO. 18320 TIME 5:50

ITEMS OF DISCUSSION ACTION REQ'D. (INCLUDE NAMES & DATE)

RE: LINE #'S 2-K-149-10" AND 2-S3-2371-

THE UNDERWALL CONDITION FOR 2-K-149-10" OF 0.310 (MANF MIN = 0.319") HAS BEEN REVIEWED AND IS ACCEPTABLE.

THE REVIEW AND ACCEPTANCE OF THE UNDERWALL CONDITION FOR 2-S3-2371- IS ALSO APPLICABLE TO 2-S3-2371-6" (MANF MIN = 0.240").

*Chad A. Nichols*

FOR INFORMATION ONLY



FORM T-69  
REV. 11/2/82

FULLMAN POWER PRODUCTS

THICKNESS REPORT

ESD 244

REV 3-17-83

ART/ITEM NAME ISO # 50/520 EQUIPMENT NORTEC

LOCATION UNIT 2 DOME AREA EL. 295' MODEL 120

PART SERIAL NUMBER DCN # 1534-019 D.R. NUMBER N/A

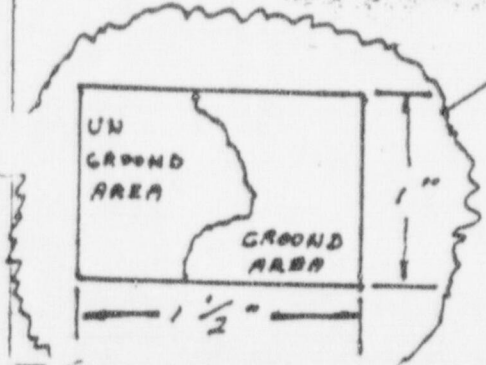
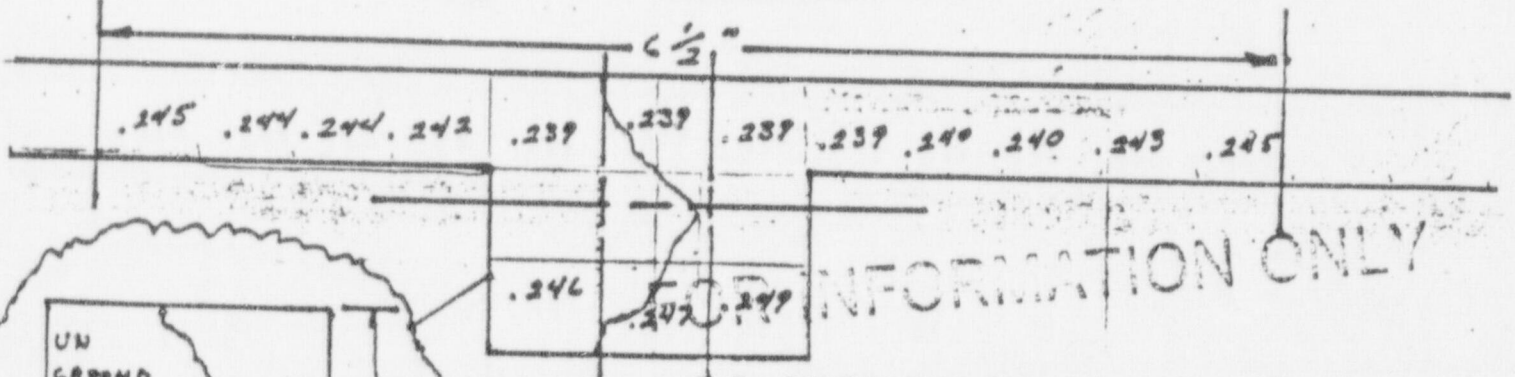
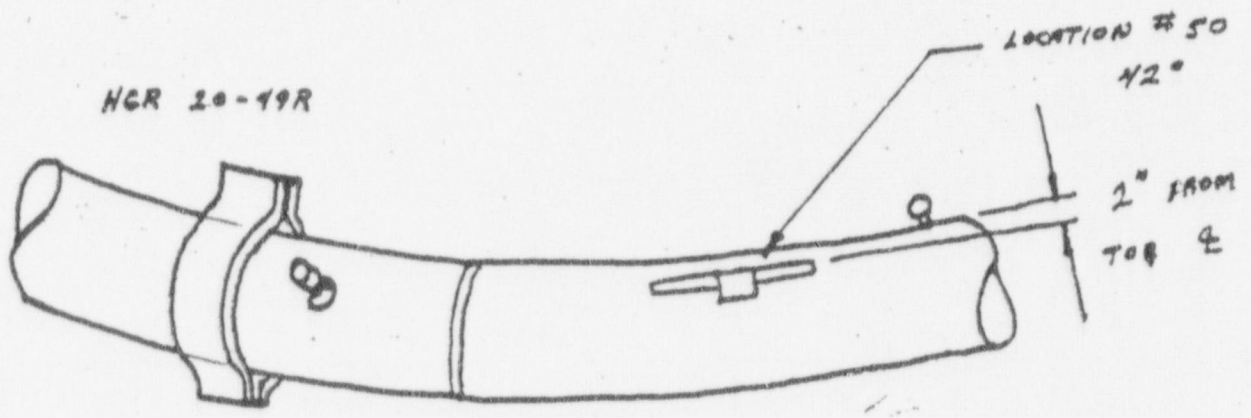
REFERENCE BLOCK, IF OTHER THAN ONE SUPPLIED SUP. MATERIAL SS/LINE # 2-53-2377-6

SERIAL NUMBER 1104 THICKNESS-STEP #1 .200 STEP #2 .300 STEP #3 .400

COMMENTS: UT ON GOUGE & DENT REMOVALS AS PER DCN # 1534-019  
"L9 LOCATION'S COMPLETED"

NOM. WALL = .280"  
LOW WALL LIMIT = .245"  
ACTUAL LOW = .237" REJECT

LOOKING NORTHWEST



U.T. CALIBRATION READING SEE ABOVE

MICROMETER READING N/A

MICROMETER SERIAL # N/A

DATE/INSPECTOR 8-26-83 Scott V...

134-4353

DCN# 1534-025

PART/ITEM NAME ISOZ-SOISZ03 Sys12CS EQUIPMENT Nortec

LOCATION Line 2-S3-2376-8 @ 319° (Area 26) MODEL NDT120

PART SERIAL NUMBER Gouge Blend Area # 26/19 D.R. NUMBER "Pending"  
Ref to DCN 1534-025

REFERENCE BLOCK, IF OTHER THAN ONE SUPPLIED SS#4 MATERIAL S.S.

INSTRUMENT

SERIAL NUMBER 1090 THICKNESS-STEP #1 .200" STEP #2 .300" STEP #3 .400"

COMMENTS: UT Reject Low wall Condition as result of grinding  
to remove gouge & deep Pitting

NOM. WALL .322"

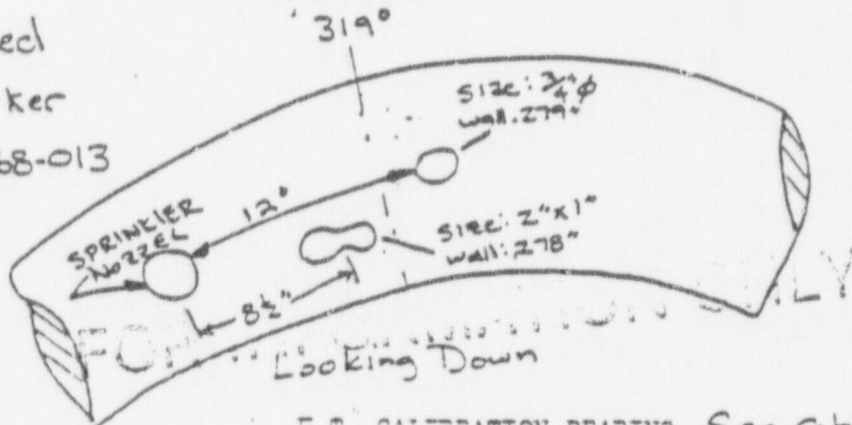
MIN. WALL .281"

ACTUAL WALL .278"  
UT REJECT

while Blending gouge, deep pitting was uncovered - upon Subsequent removal (blending) of this deep pitting a low wall Condition was created - The low wall condition is a direct result of putting the surface condition into an acceptable Condition.

**FOR INFORMATION ONLY**

Areas marked w/ Black marker  
Hold Tag # 968-013  
Attached



U.T. CALIBRATION READING See Above  
MICROMETER READING N/A  
MICROMETER SERIAL # N/A  
DATE 8-29-83

INSPECTOR: KS Cawley

594 2000 19.3

PULSAR POWER PRODUCTS  
 THICKNESS REPORT  
 Appendix I

ESI 2-- REV. 3-17-82

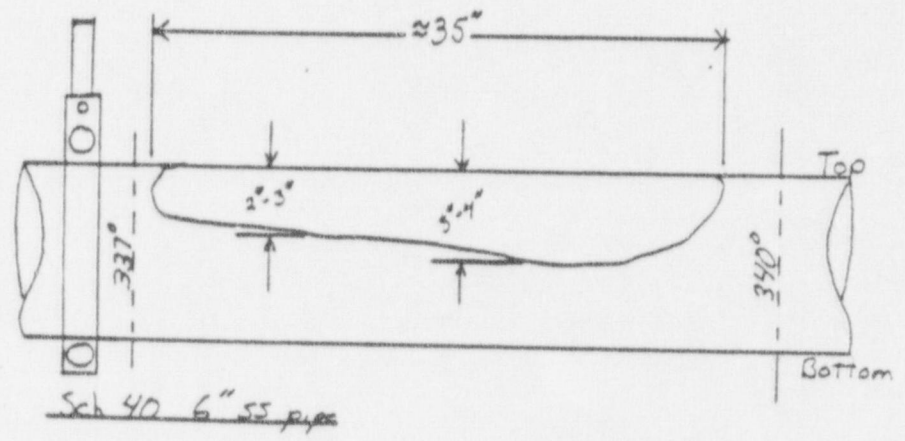
PART ITEM NAME ISO 2-501520 EQUIPMENT Ultrasonic Thickness Gage  
 LOCATION Cont #2 Dome 315° - 342° MODEL NDT 120  
 PART SERIAL NUMBER Item # 24, 25, 26, 34, 35, 36, 38 D.P. NUMBER N/A  
 REFERENCE BLOCK, IF OTHER THAN ONE SUPPLIED N/A MATERIAL SS  
 INSTRUMENT SERIAL NUMBER 1103 THICKNESS-STEP #1 .2 STEP #2 .3 STEP #3 .4

COMMENTS: While performing UT thickness inspection of Items # 24, 25, 26, 34, 35, 36, 38 I noted an overall low wall area of .231" thru .244". The area of the low wall condition was ≈ 35" in length and 2 to 4 inches circumferential length. Items # 24, 25, 26, 34, 35, 36, 38 are

NOM. WALL .280" located in the overall low wall area. Line # 2-53-2375-6  
 MIN. WALL .245" Blend areas in accordance with RCN 1534-015 all areas Reject

ACTUAL WALL

Item #	Thickness
24	.236"
25	.240"
26	.242"
34	.242"
35	.240"
36	.231"
38	.238"



View looking North with back toward Containment Liner  
Actual low wall .231" thru .244"

FOR INFORMATION ONLY

C.T. CALIBRATION READING 8/30/83 see above  
 MICROMETER READING N/A  
 MICROMETER SERIAL # N/A  
 DATE 8/30/83  
 INSPECTOR: [Signature]



# Diablo Canyon Project



PACIFIC GAS AND ELECTRIC COMPANY  
BECHTEL POWER CORPORATION

FACSIMILE COVER LETTER

TELE: \_\_\_\_\_

DATE: 8/26/83

Sheet: 1 of     

TO: COMPANY: JOBSITE

CITY & STATE: \_\_\_\_\_

ATTENTION: GUY HANSE - G.C.

TELEPHONE NUMBER OF TELECOPIER:

JOBSITE (GC): \_\_\_\_\_

JOBSITE (NPO): \_\_\_\_\_

ONLSITE: \_\_\_\_\_

OTHER: 805-541-7520

TOTAL NUMBER OF PAGES, INCLUDING COVER LETTER: 2

IF YOU DO NOT RECEIVE ALL THE PAGES, PLEASE CALL Alana (415) 768-6022

TRANSMITTAL SPEED: \_\_\_\_\_ MINUTES

WE ARE TRANSMITTING FROM A PAMAFAX MV1200 AUTOMATIC MACHINE 615-768-1667

CONFIRMATION NUMBER: \_\_\_\_\_

FROM: C. NICHOLS EXTENSION: 8-0293  
D. CROSBY

SPECIAL INSTRUCTION: \_\_\_\_\_

TIME SENT OUT: \_\_\_\_\_

P.O. BOX 3925 • SAN FRANCISCO, CALIFORNIA 94119

00229/0001P

554 201A

# TELEPHONE CALLS

ROUTE	R. BAUMANIX
	M. K. TRESLER
	C. CROSBY

OH	CLYDE NICHOLS	OF	PSE	FILE	146. D 8 / 26 / 5	DATE	12/26/5
TO	GUY HAUSE	OF	GC	JOB NO.	18370	TIME	12:30

ITEMS OF DISCUSSION

ACTION REQ'D. (INCLUDE NAMES & DATES)

RE: LINE No. 53-2377-6

THE LOCAL MIN WALL CONDITION  
 OF 0.239" IS ACCEPTABLE  
 THE CALCULATED MIN WALL  
 FOR THIS LINE IS 0.094"  
 (DESIGN CONDITIONS OF 370 PSIG / 650°F)

*Clyde Nichols*

FOR INFORMATION ONLY



DIABLO CANYON PROJECT  
**TELEPHONE  
 CALLS**

030785  
 M. FARNER

ROUTE  
 M. TRESLER ( )  
 L. SHIPBY ( )  
 E. BACHNIK ( )

FROM CLYDE NICHOLS OF PSE FILE 146.10 DATE 9/7/83  
 TO STAN FRENIS-LAWRENCE OF GC JOB NO. 15320 TIME 8:30 AM

ITEMS OF DISCUSSION

ACTION REQ'D. (INCLUDE NAMES & DATES)

RE: MIN WALL FOR LINES  
 2-53-2375 + 2-53-2376

THE CALCULATED MIN WALL  
 FOR THESE LINES IS AS  
 FOLLOWS

2-53-2375 - 6"  
 $t_m = 0.104"$

2-53-2376 - 8"  
 $t_m = 0.148"$

THE CONDITIONS OF MIN WALL VIOLATIONS  
 OF .231 THRU .242 FOR LINE # 2375  
 AND .278 THRU .279 FOR LINE # 2376  
 ARE ACCEPTABLE.

*Clyde Nichols*





DIABLO CANYON PROJECT  
**TELEPHONE  
 CALLS**

030785  
 M. FARNER

ROUTE  
 M. TRESLER ( )  
 L. SHIPLEY ( )  
 E. BACHNIK ( )

FROM GUIDE NICHOLS OF PSE FILE 146.10 DATE 9/7/83  
 TO STAN FRENIS-LAWRENCE OF GC JOB NO. 18320 TIME 8:30 AM

ITEMS OF DISCUSSION ACTION REQ'D. (INCLUDE NAMES & DATES)

RE: MIN WALL FOR LINES  
 2-53-2375 + 2-53-2376

THE CALCULATED MIN WALL  
 FOR THESE LINES IS AS  
 FOLLOWS

2-53-2375 - 6"  
 $t_m = 0.104''$

2-53-2376 - 8"  
 $t_m = 0.148''$

THE CONDITIONS OF MIN WALL VIOLATIONS  
 OF 231 THRU 242 FOR LINE # 2375  
 AND 278 THRU 279 FOR LINE # 2376  
 ARE ACCEPTABLE.

FOR INFORMATION ONLY

*Guide Nichols*