

PHILADELPHIA ELECTRIC COMPANY

2301 MARKET STREET

P.O. BOX 8699

PHILADELPHIA, PA. 19101

(215) 841-4000

JOHN H. AUSTIN, JR.  
PRESIDENT

December 29, 1987  
Docket Nos. 50-277  
50-278

Mr. William T. Russell  
Administrator, Region I  
U.S. Nuclear Regulatory Commission  
Washington, DC 20555

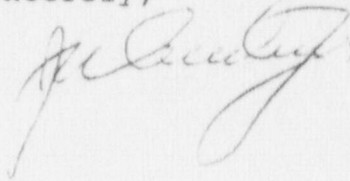
ATTENTION: Document Control Desk

Dear Mr. Russell:

The attached 22 copies of the Summary Report are being submitted in accordance with Section 4.13.2 of the Peach Bottom Commitment to Excellence Action Plan. This summary report reflects schedule information through December 11, 1987.

If you or your staff have any questions or concerns about the format or the updated schedule for Category I tasks of the Peach Bottom Commitment to Excellence Action Plan, please do not hesitate to contact us.

Sincerely,



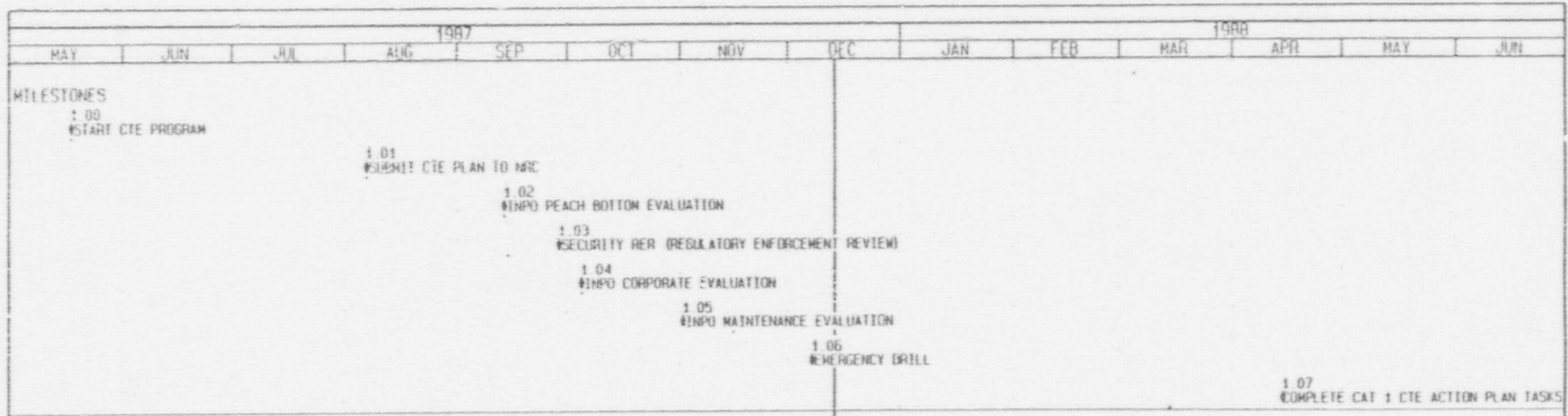
cc: Addressee  
R. E. Martin, Project Manager (50 copies)  
T. P. Johnson, Resident Inspector

*Foot*  
1/1/88

## SUMMARY

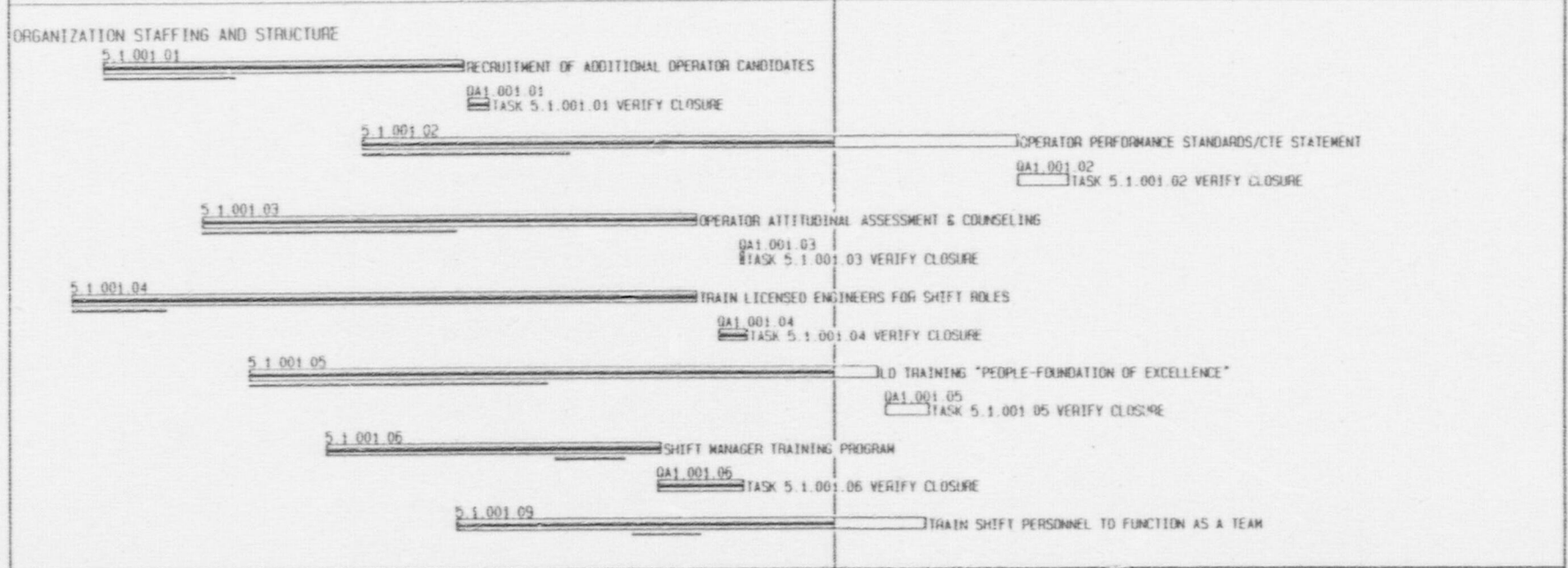
The Peach Bottom Commitment to Excellence Action Plan, as submitted August 7 and revised in our responses of September 28, has 95 Category I tasks from Sections 5.1 to 5.5 to be closed prior to restart. Work has been completed and closed out on 22 of these tasks. In addition there are 76 open commitments/open items from Sections 5.6 to 5.9 of the Action Plan to be completed prior to restart. Work has been completed and closed out on 13 of these items. Primarily because of actual work scope exceeding the estimate as we implement the Plan, our target date for completion, including Quality Assurance close out, of Category I tasks and items is April 15, 1988. However, our entire restart schedule is under review as we consider the impact of our reorganization effort and other work activities. We expect a revised schedule to be available in January.

The bar chart schedule for Category I activities which follows (pages 1 to 15) reflects our current schedule for each task or item. In addition, the schedule reflects any changes to the Action Plan list since our last schedule update to you on November 30. These changes are summarized on page 16.



EXECUTIVE SUMMARY RESTART PLAN

2.0 REEVALUATION IN PROGRESS



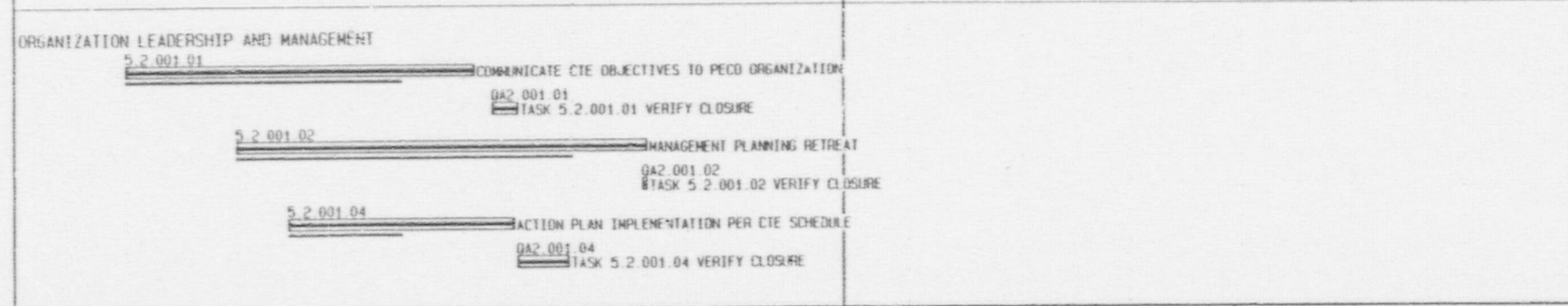
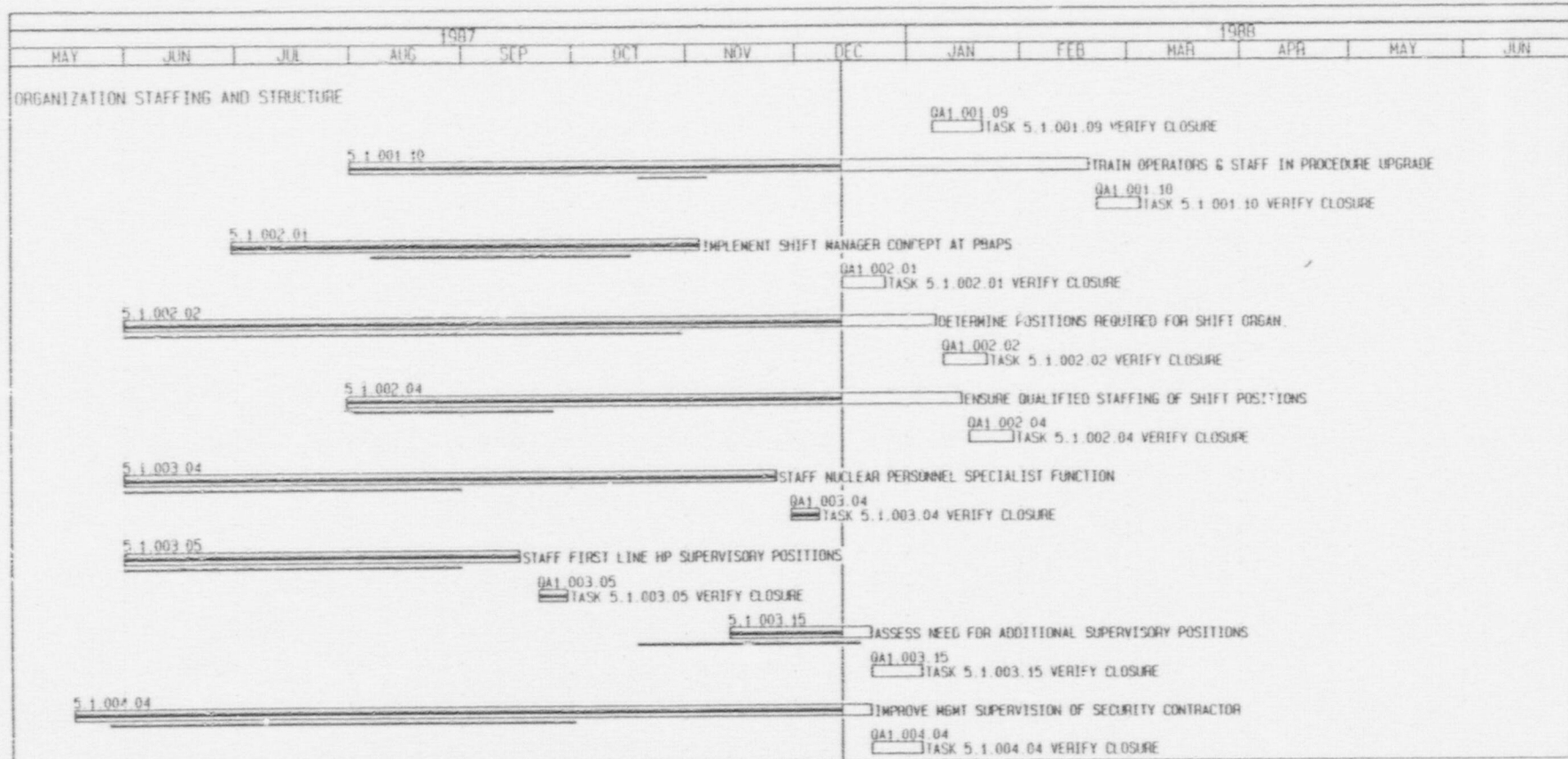
Activity Bar/Early Dates  
 Critical Activity  
 Progress Bar  
 Target Dates

Project Start : 18MAY87  
 Project Finish : 31MAY92\*

Philadelphia Electric CO.  
 COMMITMENT TO EXCELLENCE  
 Section 6.2 Category 1 Activities

Sheet 1 of 15

PEACH BOTTOM COMMITMENT TO EXCELLENCE PROGRAM				
Date	Revised	Checked	Approved	
11/15/87	12/18/87	15/12/87	10/4	106



2

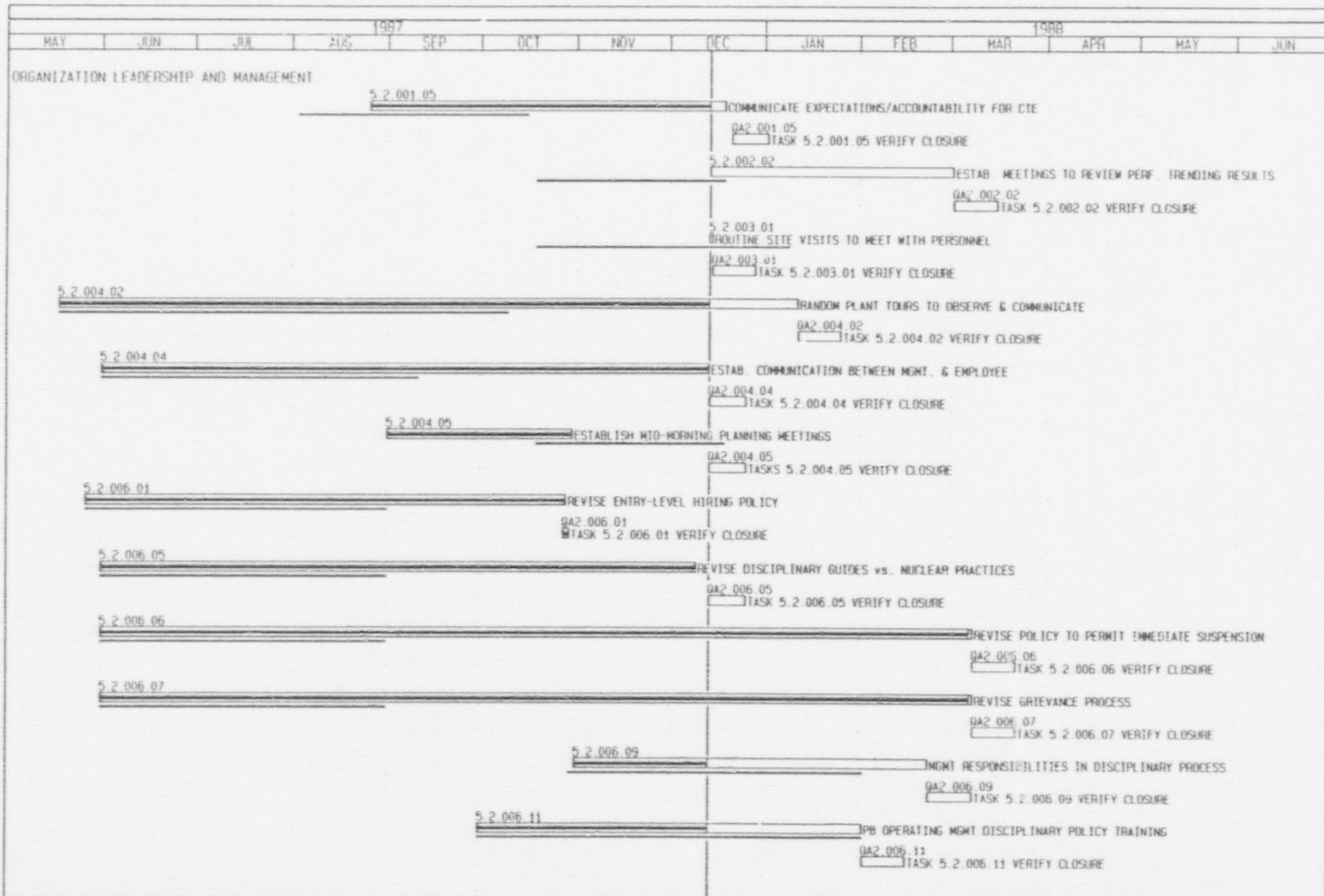
[Solid Line] Activity Bar/Early Dates  
 [Double Line] Critical Activity  
 [Dashed Line] Progress Bar  
 [Thin Line] Target Dates  
 Primavera Systems, Inc. 1984 1985 1986 1987

Philadelphia Electric CO.  
 COMMITMENT TO EXCELLENCE  
 Section 6.2 Category 1 Activities

Project Start: 18MAY87  
 Project Finish: 31MAY92\*

Sheet 2 of 15  
 Date Date: 14DEC87  
 Plot Date: 15DEC87

PEACH BOTTOM COMMITMENT TO EXCELLENCE PROGRAM			
Date	Revision	Checked	Approved
15 DEC 87	1	WJG	JDA



Activity Bar/Early Dates  
Critical Activity  
Progress Bar  
Target Dates

Primavera Systems, Inc. 1984 1985 1986 1987

Project Start: 18MAY87  
Project Finish: 31MAY92\*

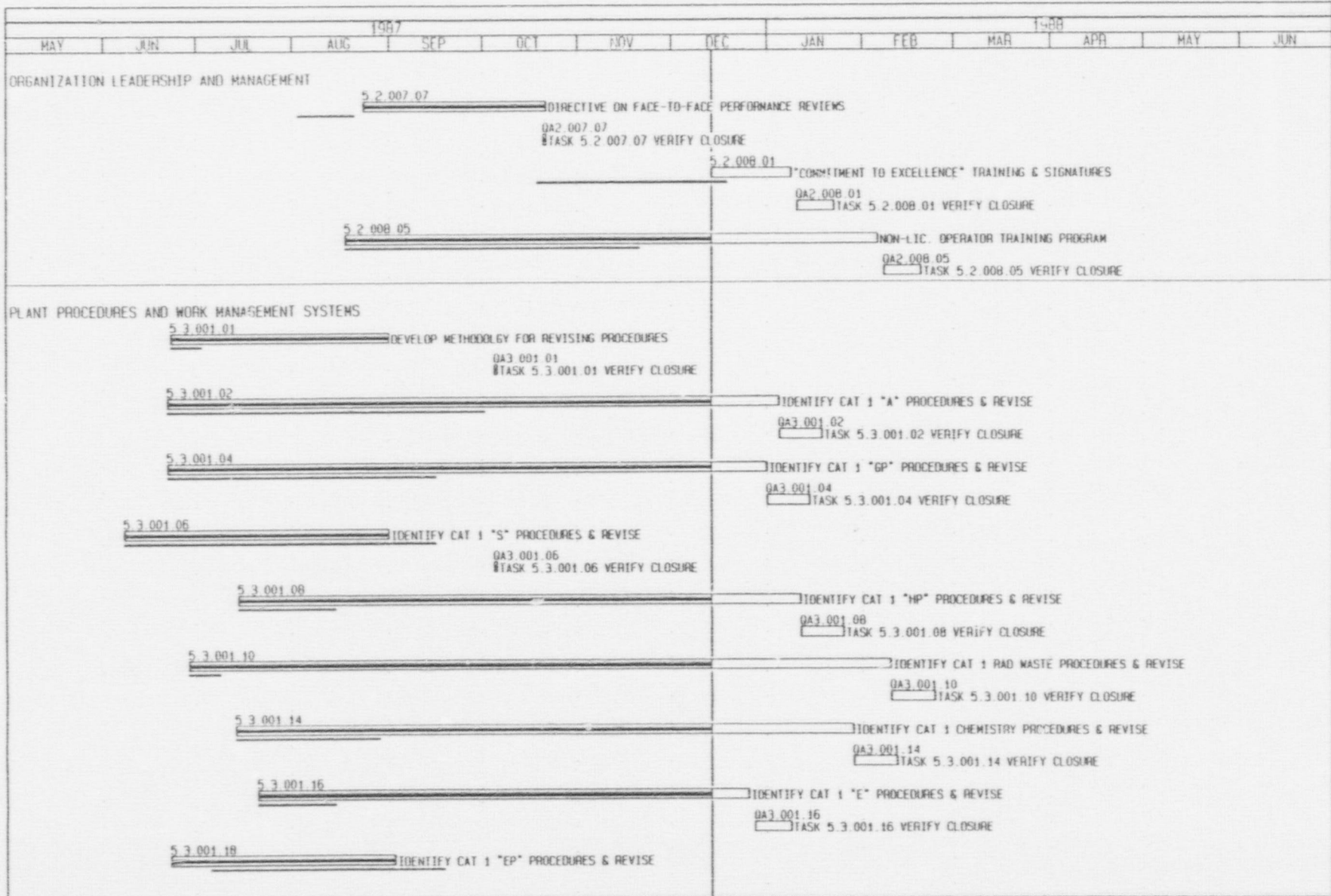
Philadelphia Electric CO.  
COMMITMENT TO EXCELLENCE  
Section 6.2 Category 1 Activities

Sheet 3 of 15

PEACH BOTTOM COMMITMENT TO EXCELLENCE PROGRAM

Date	Revision	Checked	Approved
01/11/88	REV 01 ISSUE 1 of A	TDS	JL

Data Date: 14DEC87  
Plot Date: 15DEC87



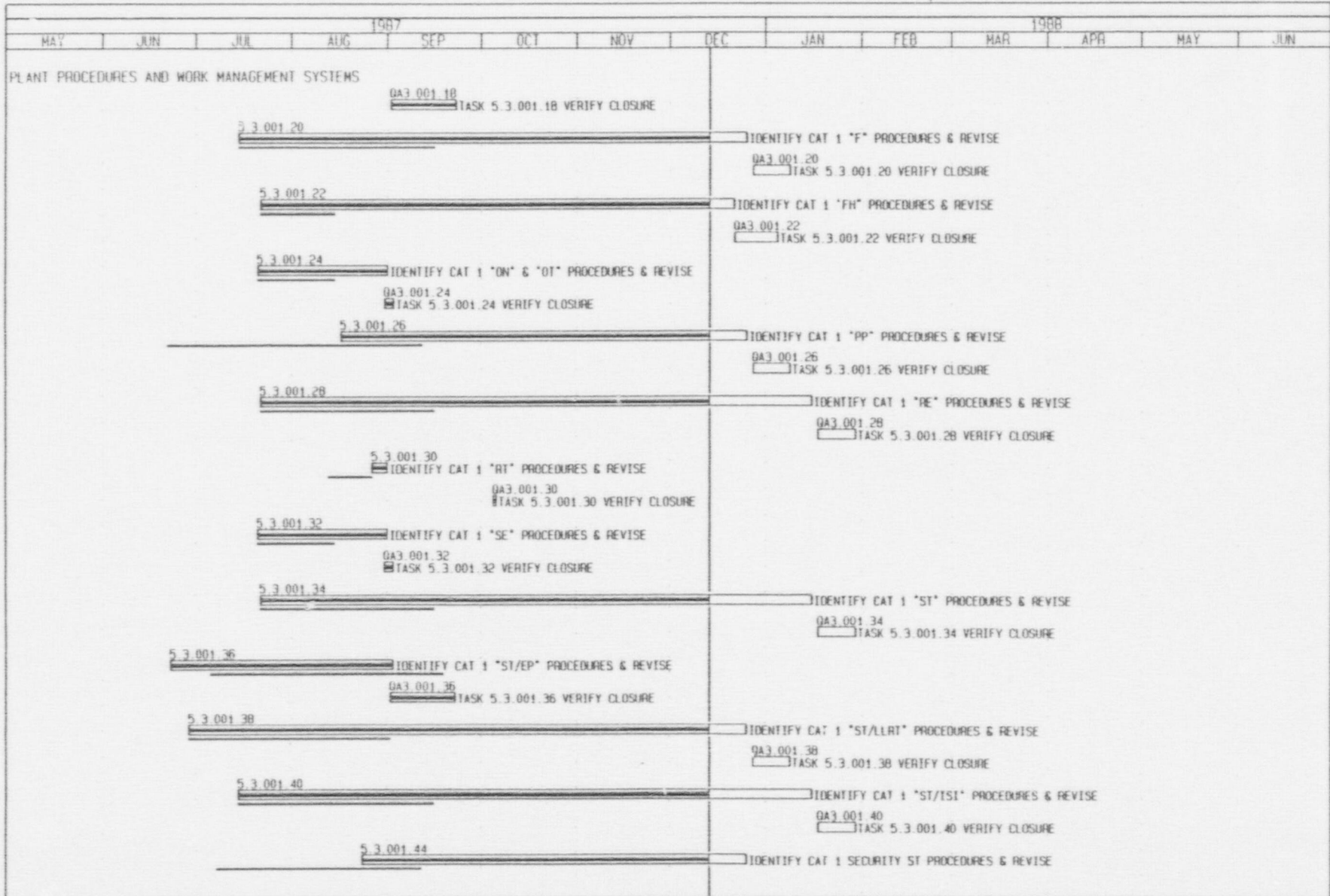
Activity Bar/Early Dates  
 Critical Activity  
 Progress Bar  
 Target Dates  
 Primavera Systems, Inc. 1984, 1985, 1986, 1987

Philadelphia Electric CO.  
 COMMITMENT TO EXCELLENCE  
 Section 6.2 Category 1 Activities

Project Start : 18MAY87  
 Project Finish: 31MAY92\*

Sheet 4 of 15  
 Data Date: 14DEC87  
 Plot Date: 15DEC87

PEACH BOTTOM COMMITMENT TO EXCELLENCE PROGRAM				
Date	Revision	Checked	Approved	
15DEC87	Rev 07	15DEC87	11/25	



5

Activity Bar/Early Dates  
 Critical Activity  
 Progress Bar  
 Target Dates  
 Primavera Systems, Inc. 1984, 1985, 1986, 1987

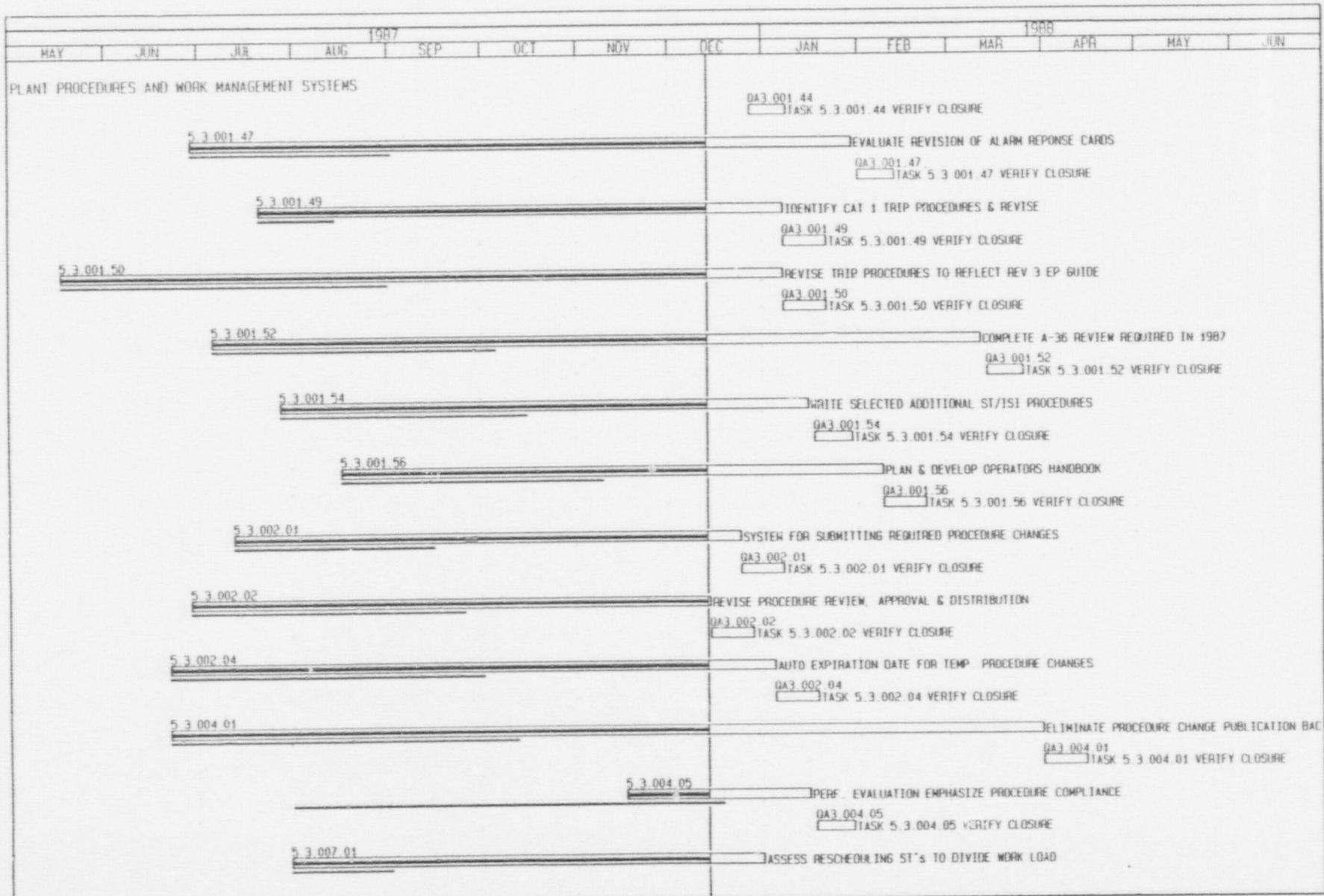
Philadelphia Electric CO.  
 COMMITMENT TO EXCELLENCE  
 Section 6.2 Category 1 Activities

Project Start : 18MAY87  
 Project Finish: 31MAY92\*

Sheet 5 of 15  
 Data Date: 14DEC87  
 Plot Date: 15DEC87

PEACH BOTTOM COMMITMENT TO EXCELLENCE PROGRAM

Date	Revision	Checked	Approved
12/15/87	1	ESHE	MDA
		TDS	



9

Activity Bar/Early Dates  
 Critical Activity  
 Progress Bar  
 Target Dates

Primavera Systems, Inc. 1984 1985 1986 1987

Project Start: 18MAY87  
 Project Finish: 31MAY92\*

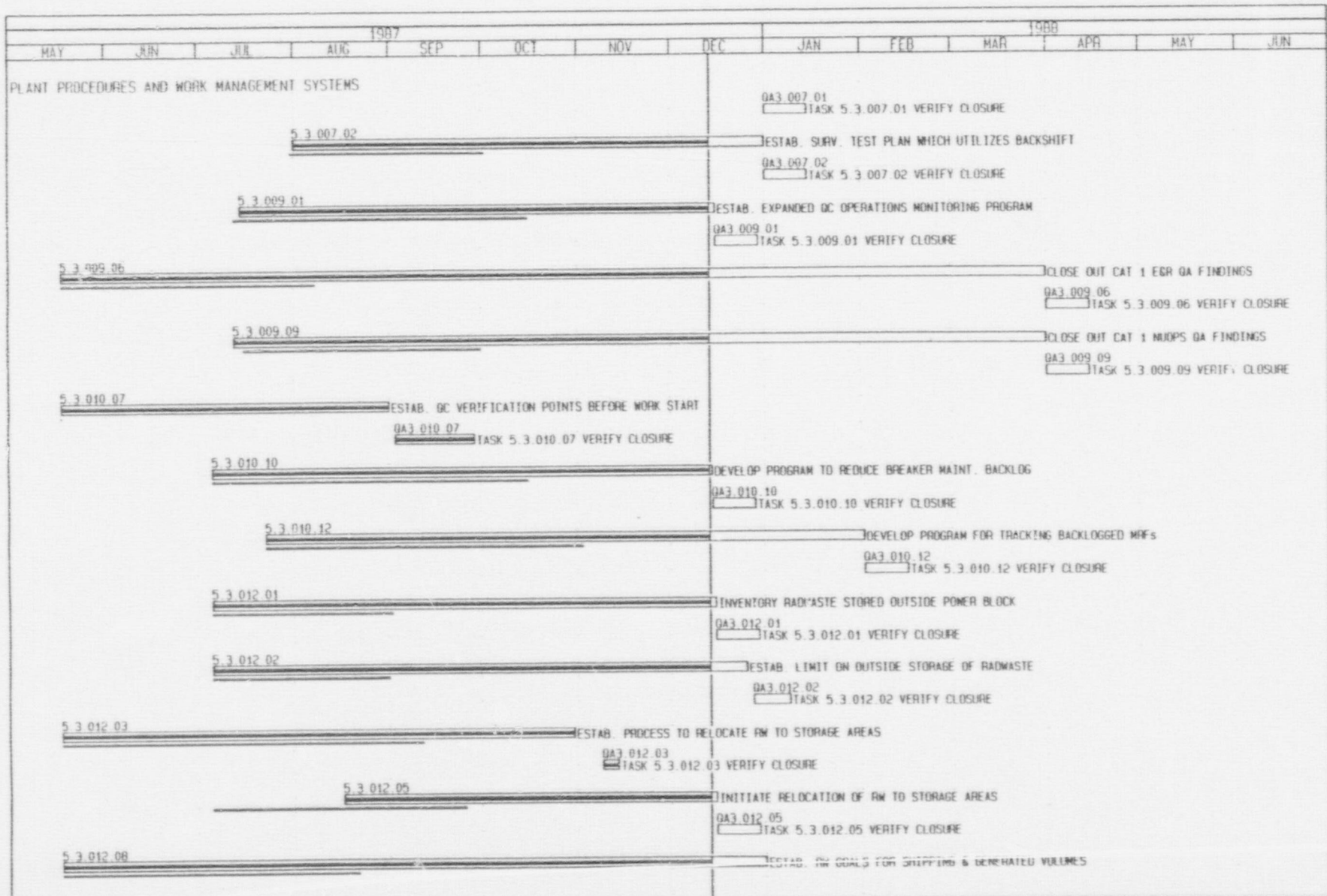
Philadelphia Electric CO.  
 COMMITMENT TO EXCELLENCE  
 Section 6.2 Category 1 Activities

Sheet 6 of 15

Date: 14DEC87  
 Plot Date: 15DEC87

PEACH BOTTOM COMMITMENT TO EXCELLENCE PROGRAM				
Date	Revision	Checked	Approved	
5/18/92	Rev 0 Issue 10A	TDS	J	





7

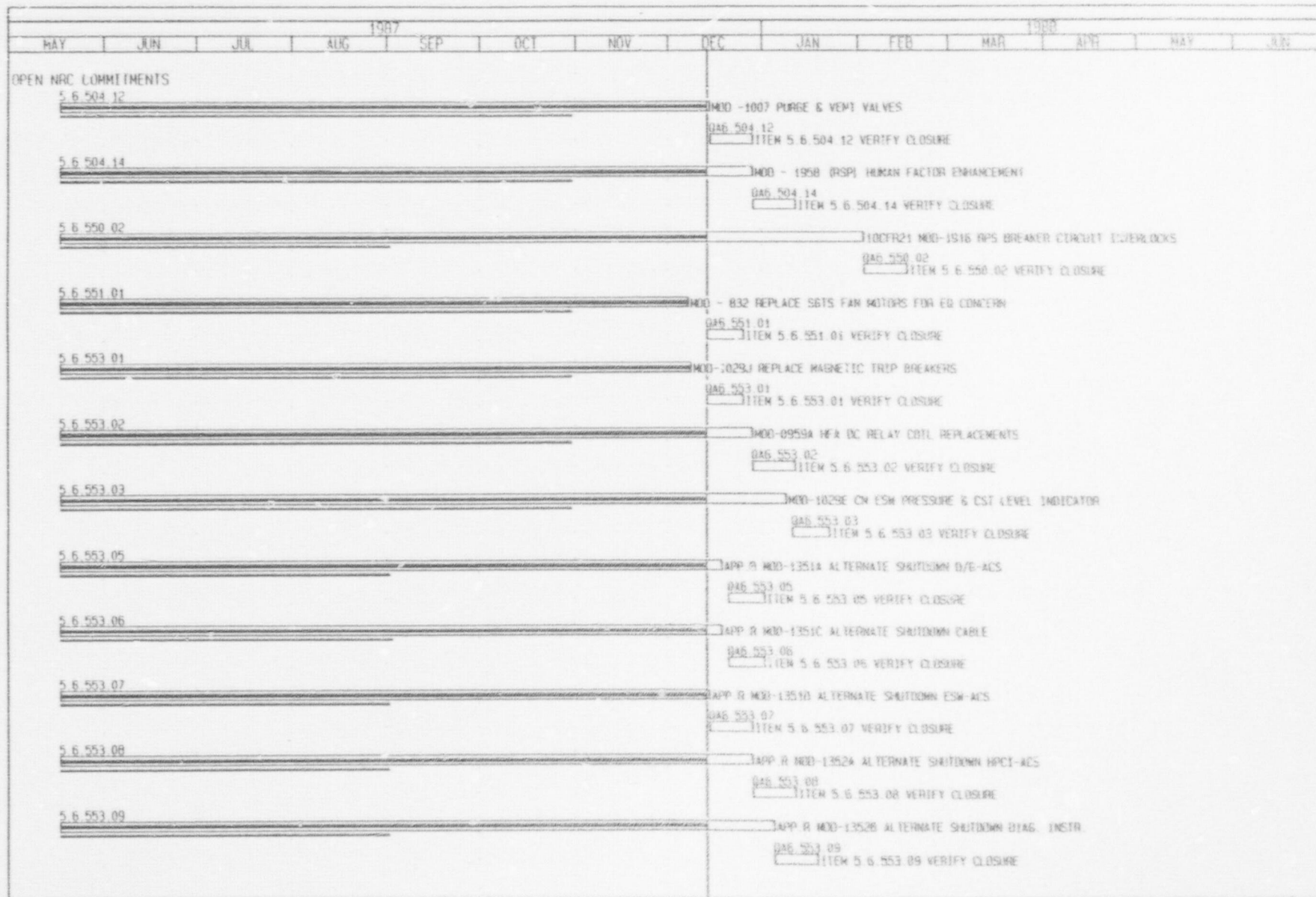
Activity Bar/Early Dates  
 Critical Activity  
 Progress Bar  
 Target Dates  
 Primavera Systems, Inc. 1984 1985 1986 1987

Philadelphia Electric CO.  
 COMMITMENT TO EXCELLENCE  
 Section 6.2 Category 1 Activities

Project Start: 18MAY87  
 Project Finish: 31MAY92\*

Sheet 7 of 15  
 Data Date: 14DEC87  
 Plot Date: 15OEC87

PEACH BOTTOM COMMITMENT TO EXCELLENCE PROGRAM				
Date	Revision	Checked	Approved	
15DEC87	DEV B PSUE TGA	TGA		

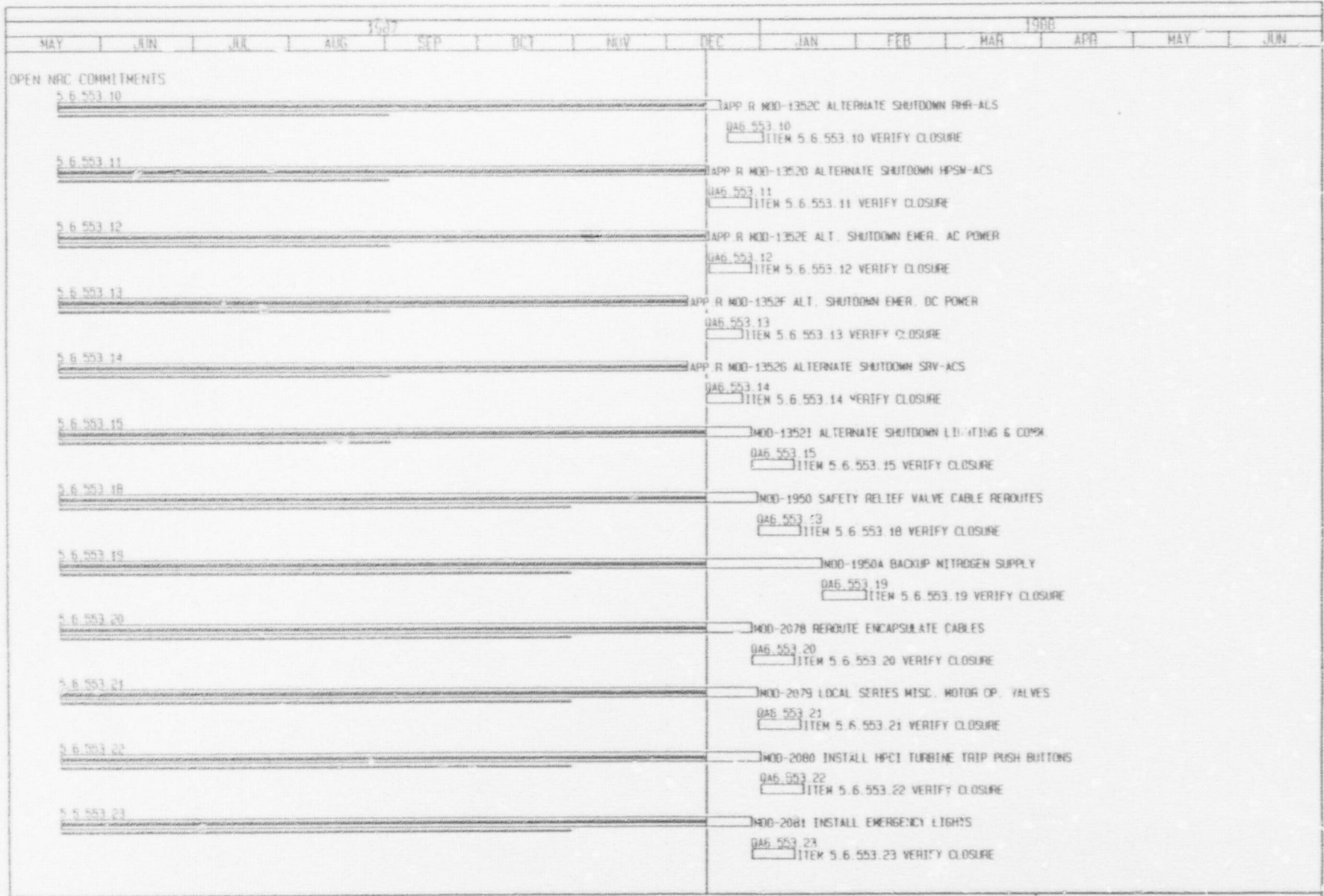


11

Activity Bar/Early Dates  
 Critical Activity  
 Progress Bar  
 Target Dates  
 Primavera Systems, Inc. 1984 1985 1986 1987

Philadelphia Electric CO.  
 COMMITMENT TO EXCELLENCE  
 Section 6.2 Category 1 Activities  
 Project Start : 18MAY87  
 Project Finish: 31MAY90  
 Sheet 11 of 15  
 Date Date: 14DEC87  
 Plot Date: 15DEC87

PEACH BOTTOM COMMITMENT TO EXCELLENCE PROGRAM			
Date	Revision	Checked	Approved
15DEC87	REV 0	ISSUE FOR	OK



Activity Bar/Early Dates  
 Critical Activity  
 Progress Bar  
 Target Dates

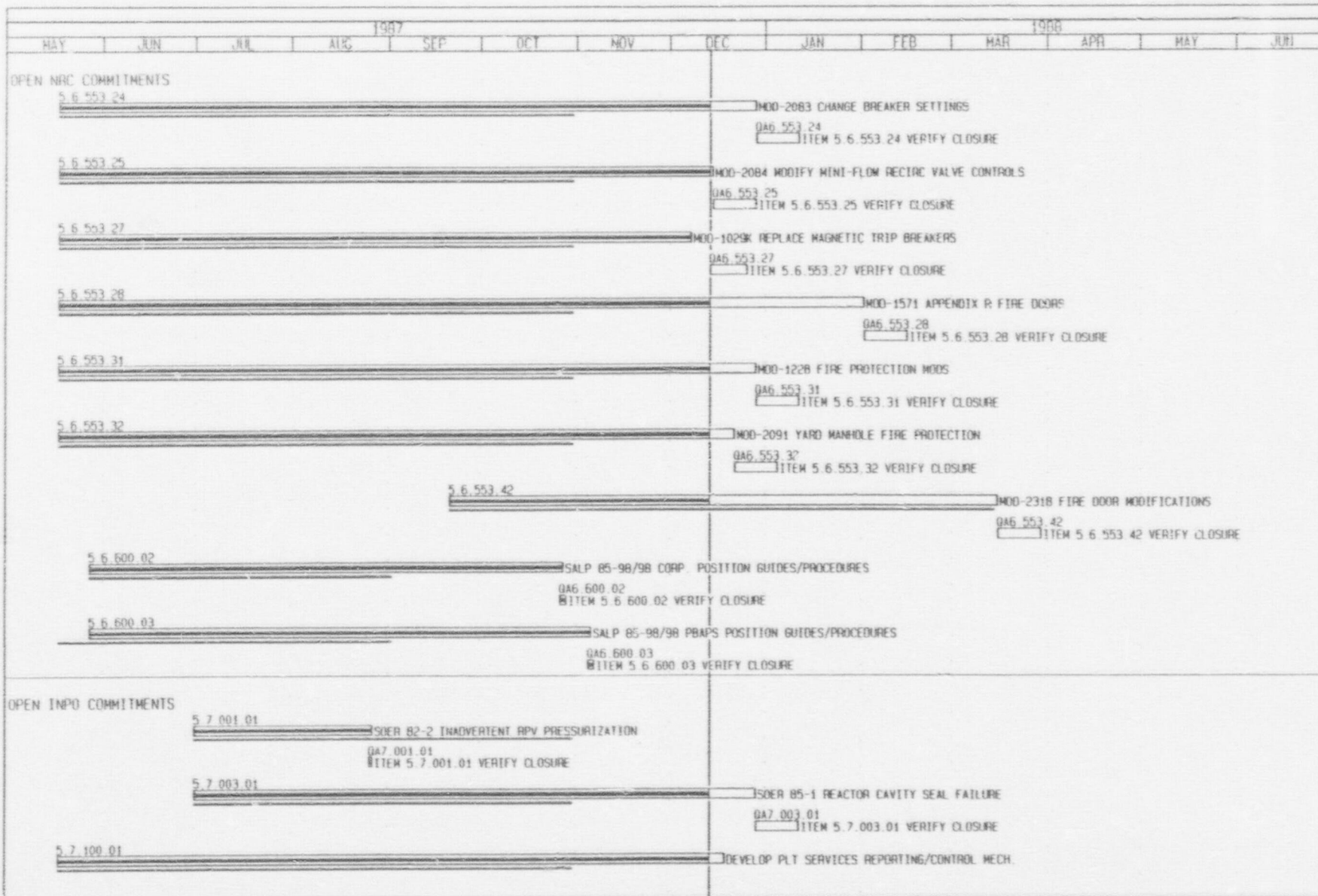
Project Start: 18MAY87  
 Project Finish: 31MAY88

Philadelphia Electric CO.  
 COMMITMENT TO EXCELLENCE  
 Section 6.2 Category 1 Activities

Sheet 12 of 15

Data Date: 14DEC87  
 Plot Date: 15DEC87

PEACH BOTTOM COMMITMENT TO EXCELLENCE PROGRAM				
Date	Revision	Checked	Approved	
12/14/87	1	TSJ	TSJ	



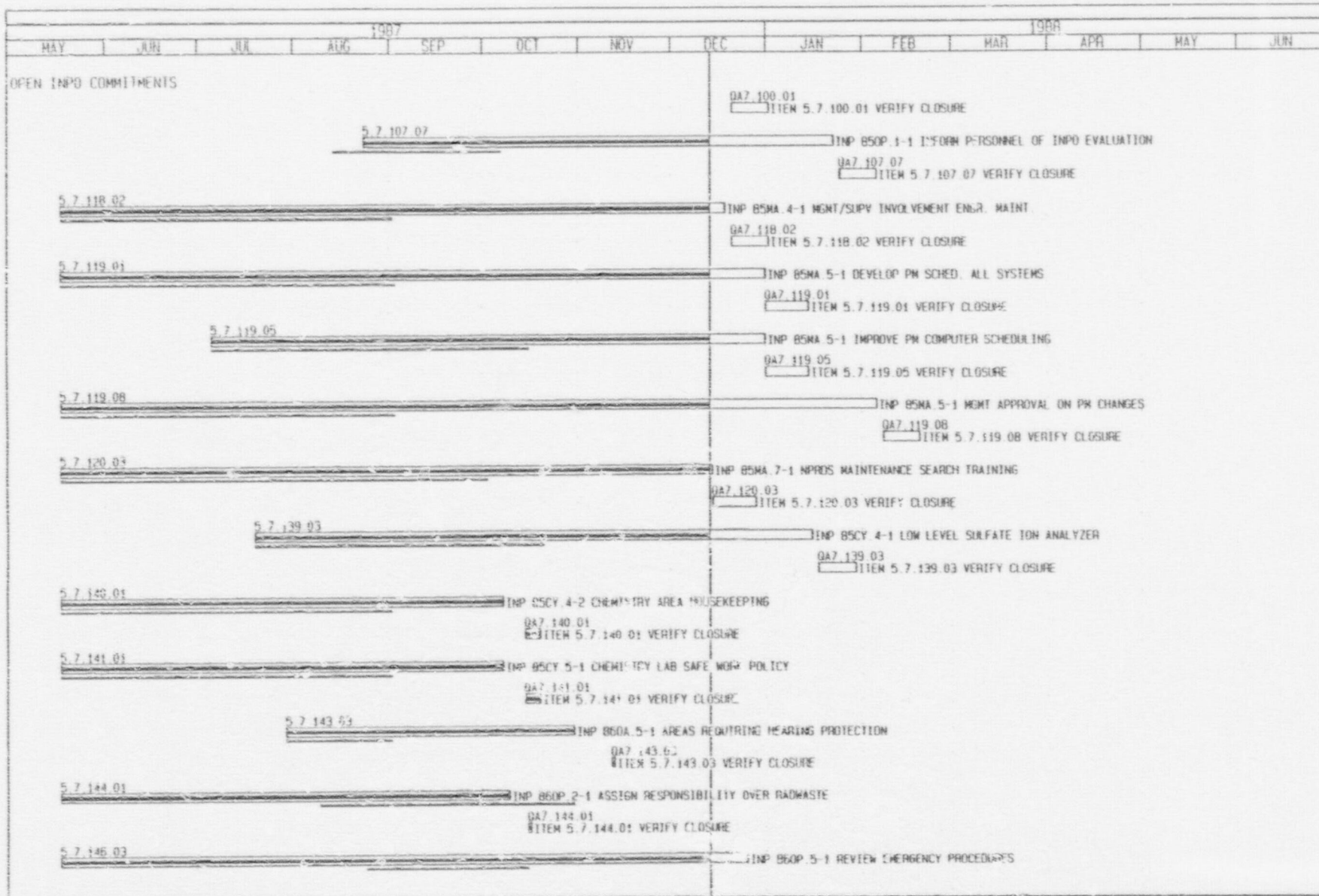
Activity Bar/Early Dates  
 Critical Activity  
 Progress Bar  
 Target Dates  
 Primavera Systems, Inc. 1984 1985 1986 1987

Philadelphia Electric CO.  
 COMMITMENT TO EXCELLENCE  
 Section 6.2 Category 1 Activities

Project Start : 18MAY87  
 Project Finish: 31MAY92\*

Sheet 13 of 15  
 Date Date: 14DEC87  
 Plot Date: 15DEC87

PEACH BOTTOM COMMITMENT TO EXCELLENCE PROGRAM				
Date	Revision	Checked	Approved	
15DEC87	Issue 10A	TTT	TTT	



14

Activity Bar/Early Dates  
 Critical Activity  
 Progress Bar  
 Target Dates  
 Primavera Systems, Inc. 1984 1985 1986 1987

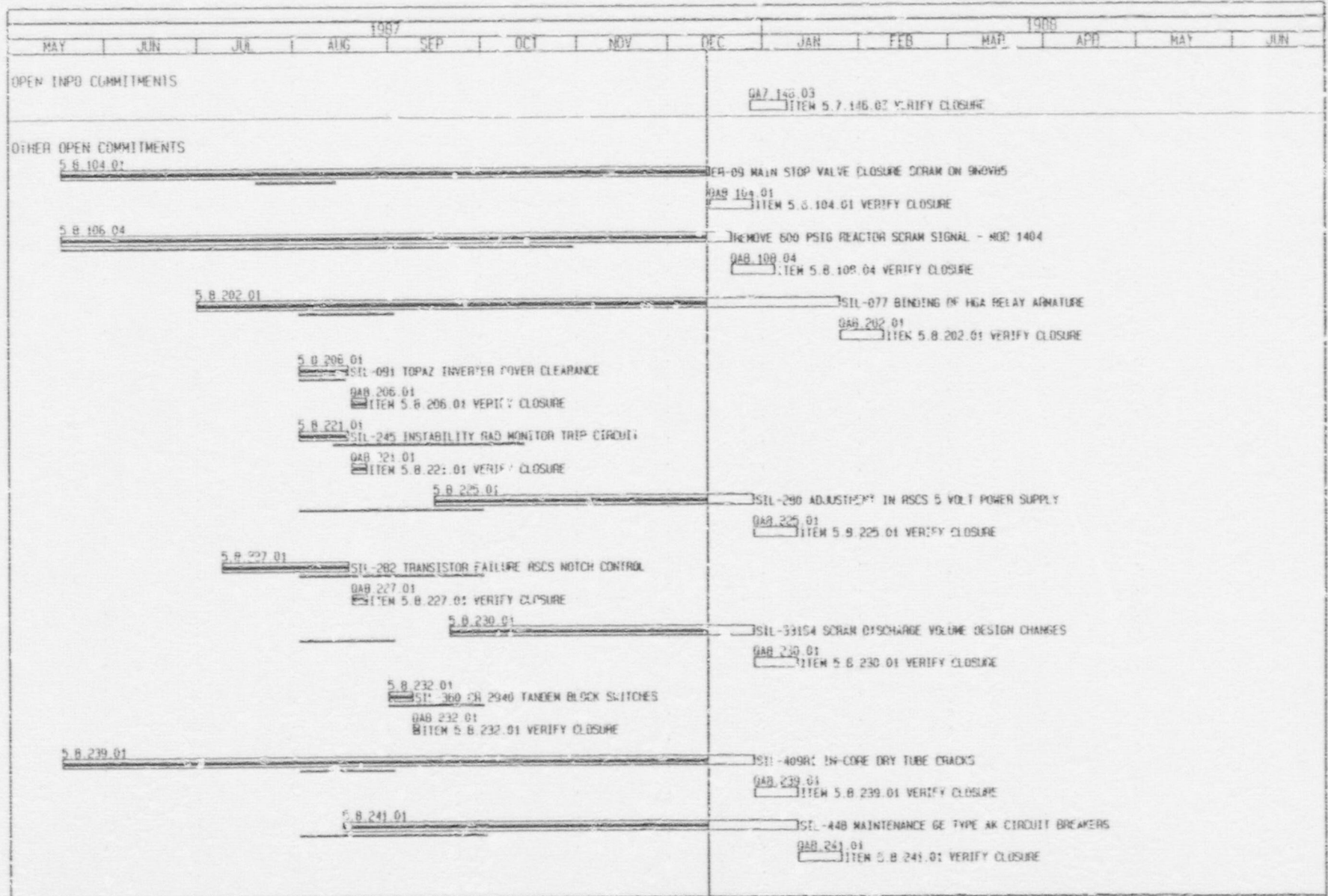
Philadelphia Electric CO.  
 COMMITMENT TO EXCELLENCE  
 Section 5.2 Category 1 Activities

Project Start : 18MAY87  
 Project Finish : 31MAY92\*

Sheet 14 of 15  
 Date Date: 14DEC87  
 Plot Date: 15DEC87

PEACH BOTTOM COMMITMENT TO EXCELLENCE PROGRAM			
Date	Revision	Checked	Approved
14DEC87	2 of 0	VSJ/EJQA	TCS

15



Activity Bar/Earl: Del.  
 Critical Activity  
 Progress Bar  
 Target Date

PEACH BOTTOM COMMITMENT TO EXCELLENCE PROGRAM			
Date	Revision	Created	Approved
15DEC87	1	WJ	

Summary of Schedule Revisions

No new tasks were added to the CTE Action Plan since the third submittal.

The following task was deleted from the CTE Action Plan since the third submittal:

Program Plan Number

5.5.3.1