

COMANCHE PEAK STATUS BRIEFING

January 1986

Licensing

CPRT Program Plan

Staff Evaluation of Applicants Program Plan-Schedule:

1/15/86 Complete all individual SSER sections
1/31/86 Project management to obtain second draft

Applicants expected to incorporate their 11/22/85 responses to staff comments on the Program Plan in a Revision 3 to the Program Plan to be submitted by January 27, 1986.

Recently, we have been informed of personnel changes within CPRT (lead for Electrical issues, Test Program issues, and Safety Significant Evaluations conducted for construction deficiencies).

FSAR Review

10/24/85 issued SSER No. 12 resolving many routine licensing issues, such as the fire protection program, including the alternate safe shutdown capability.

Completed schedular exemption package regarding GDC-4 eliminating the need to protect against primarily loop pipe breaks for Unit 2.

Received draft of staff evaluation on reliability of TDI diesel generators. SSER in preparation.

Allegations

NRR staff completing evaluations on approximately 200 allegations in the civil, mechanical, and electrical areas. SSER in preparation.

860429013: 860402
PDR FOIA
GARDE86-218 PDR

FOIA-86-218
A/1

(9)

All allegations received after September 15, 1985, are being evaluated by Region IV, with NRR assistance as required, and will be closed out in inspection reports.

Inspections

Region IV is conducting the inspections of the construction adequacy program.

- Differences between ERC inspections and Region IV independent inspections resulted in TU stopping work beginning 1/8/86.

IE is conducting audits of the design adequacy program.

NRR is conducting audits of the reanalysis/redesign of piping and pipe supports being conducted by Stone & Webster and cable tray and conduit supports being conducted by EBASCO.

- Differences between independent staff inspections of the cable tray supports to verify the accuracy of the as-built data developed by EBASCO resulted in TU stopping work on 12/3/85. Ebasco planned to resume work on week of 1/13/86.

TUGCO has identified that the input to the seismic analysis performed by CCL for HVAC supports for Unit 1 does not reflect the as-built HVAC supports. Corrective action program calls for all Unit 1 HVAC supports to be field reverified and seismic analyzed.

Hearings

Hearings have been suspended at the request of the applicants.

Discovery is ongoing among the parties. Prehearing conference held on 11/12/85.

The NRC staff made available key staff people in an informal meeting with representatives of the intervenor CASE on 11/19-20/85, to discuss the NRC TRT findings in SSER's 7-11.

In response to FOIA requests the staff has made available thousands of documents related to the TRT inspections and is in the process of making additional documents available. OI review is a potential delay.

In 1983, the ASLB determined to hear Intimidation/Harassment issues separately and established a second licensing board. On 12/24/85, the two licensing boards with the agreement of all parties dissolved the second licensing board. All further hearings will be conducted by the single licensing board looking at the applicants QA/QC program.

Enforcement

Many enforcement issues are two years old or older.

Applicants' corrective action is the CPRT program plan which responded to these matters.

The NRC staff is completing its evaluation to approve this program plan.

Intimidation and Harassment

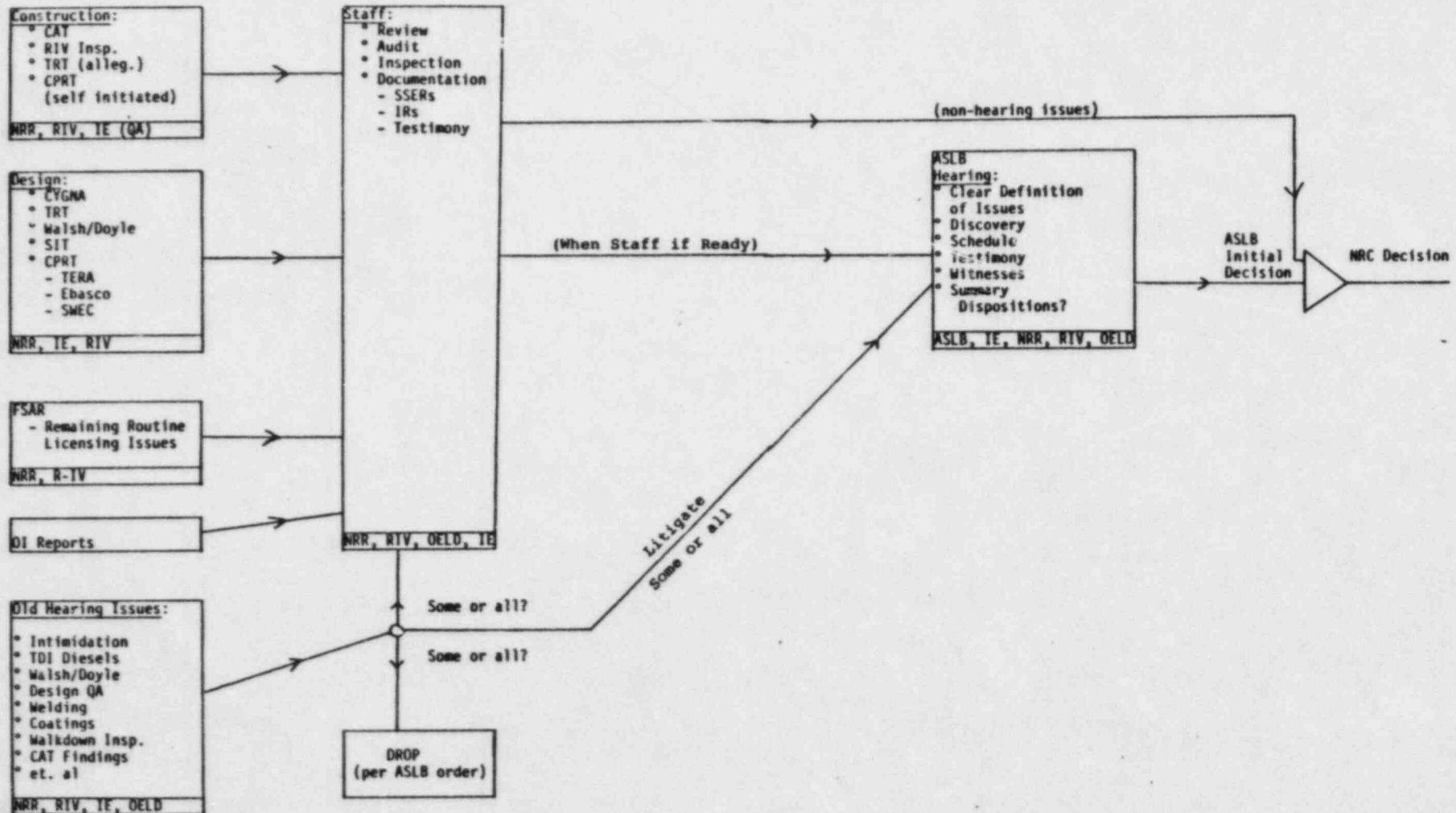
The intimidation and harassment panel report was issued on November 4, 1985.

The applicants' response to the report expected on February 7, 1986.

An enforcement package taking into consideration the applicants response will be prepared by April 1986.

[illegible]

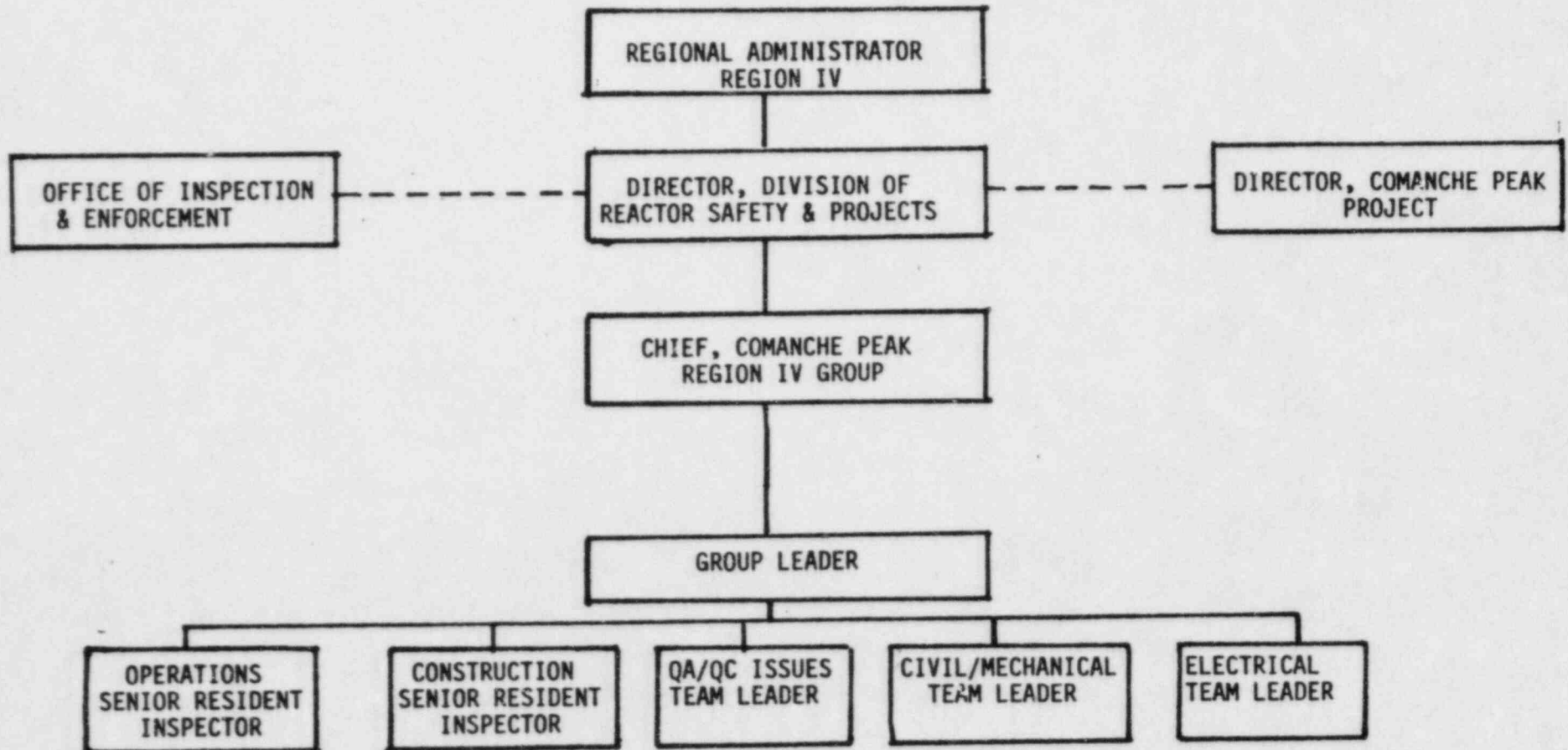
COMANCHE PEAK LICENSING FLOW CHART



RIV CPSES GROUP
INSPECTION PROGRAM
PLAN/SCHEDULE

FOIA-86-218
A/Z

REGION IV COMANCHE PEAK GROUP



CONTRACTOR PERSONNEL ASSIGNED AS REQUIRED

INSPECTION OF CPRT ACTIVITIES

10/85	11/85	12/85	1/86	2/86	3/86	4/86	5/86	6/86	7/86	8/86	9/86	10/86
.

INSPECTIONMECHANICAL
DSAP
ELECTRICAL
DSAP

50%

Cable Tray & Conduit Support As-Built Insps.

ALLEGATIONS

20%

5 New Allegations (\approx 20 Items) / Previous TRT Allegations (\approx 25 Items)QA/QC OVERALL
CPRT PROGRAM

50%

Audit: Overview Program - ERC - TERA

SIGNIFICANT ONSITE EFFORT AND ISSUES

1. FIRE MAIN (MICROBIOLOGICALLY INDUCED CORROSION) ✓
2. PIPE SUPPORTS
3. DAMAGE CONTROL STUDY MODS
4. CABLE TRAY AND CONDUIT SUPPORTS
5. HVAC SUPPORTS
6. CONDENSER TUBE REPLACEMENT
7. GAP BETWEEN SEISMIC CLASS I STRUCTURES
8. CPRT IDENTIFIED ISSUES (POTENTIAL SSE)
 - COTTER PINS
 - LOCKING DEVICES
 - DAMAGED CONDUIT (ESCA)
 - S/G SAMPLE CONTAINMENT ISOLATION VALVE
 - PIPE CLAMP OUT OF PARALLEL (CCW)
 - CORROSION UNIT 2 REFUELING WATER STORAGE TANK
 - LIGHTING CIRCUIT CONTROL ROOM (WIRE NOT FULL OUT)
9. ERC INSPECTION ON HOLD
10. INSPECTION BY NRC OF SSE ON HOLD
11. ELECTRICAL INSPECTION - TUGCO PROJECT
12. THERE HAVE BEEN 20 POTENTIAL CONSTRUCTION DEFICIENCY REPORTS
ISSUED IN 1985

INSPECTION OF CPRT ACTIVITIES

10/85	11/85	12/85	1/86	2/86	3/86	4/86	5/86	6/86	7/86	8/86	9/86	10/86
.

INSPECTION

20%

Issue Specific Coordinator Replaced

(Conduit Supports Phase III Butt Splices, Inspector Qualifications)

ELECTRICAL
ISAPS I.a.1 - I.d.2

50%

(Building Gap)

STRUCTURAL
ISAPS II.a - II.c
& II.e

10%

Control Room Ceiling and Other Damage Control Study Mods

STRUCTURAL
ISAP II.d

72%

Test Program Issue Specific Coordinator Replaced (will cause delay)

ISAPS III.a.1 - III.d

100%

(Coatings) No ISAP to be Issued

ISAP IV

MECHANICAL

ISAPS V.a - V.e &
VI.a - VI.b

20%

(Reflective/Biological Gap, S/G Support Mod)

QA/QC

ISAPS VII.a.1 - VII.b.5

20%

(Material Traceability Dependent on VII.c Input)

QA/QC ADEQUACY

ISAP VII.c

50%

Ind Insp (75%), Doc Ins (30%), DR-SSE (0%), Results (0%)

CIVIL/STRUCTURAL

DSAP VIII

30%

(Mods to Cable Tray/Conduit Supports) As-built inspections, Corrective Action
Inspection of HVAC Support Problems

PIPING & SUPPORTS

DSAP IX

10%

(Support Mods, As-built Inspection)

INSPECTION OF CPRT PROGRAM

QA/QC PROGRAM

REVIEW & AUDIT CPRT PROGRAM

ISAPs

INSPECT IMPLEMENTATION OF ISAP (SAMPLING) [*]
WITNESS INSPECTIONS OF HARDWARE (10%) [*]
VERIFY RESOLUTIONS & CORRECTIVE ACTIONS
REGARDING DEVIATIONS (100% OF DEVIATIONS [**] BUT BASED ON SAMPLING [*])
VERIFY RESULTS REPORTS [**]

ISAP VII.C QA/QC AND CONSTRUCTION ADEQUACY

WITNESS 10% OF HARDWARE INSPECTIONS [*]
INDEPENDENTLY INSPECT UP TO 5% OF HARDWARE [*]
INSPECT DOCUMENTATION REVIEWS [*]
VERIFY RESOLUTION & CORRECTIVE ACTIONS
REGARDING DEVIATIONS (100% OF DEVIATIONS [**] BUT BASED ON SAMPLING [*])
VERIFY RESULTS REPORTS [*]

SITE MODIFICATIONS

INSPECT MODIFICATIONS TO:

- CABLE TRAY SUPPORTS
- CONDUIT SUPPORTS
- PIPE SUPPORTS

DSAPs

INSPECT ONSITE ENGINEERING WALKDOWNS

- PIPE SUPPORTS
- CABLE TRAYS
- CONDUIT SUPPORT

[*] COULD BE CHANGED FOR RESOURCES
[**] SUGGEST NO CHANGE TO STRENGTHEN NRC POSITIONS
RELATIVE TO LICENSIBILITY OF CPSES

MAJOR INSPECTION ISSUES

INSPECTION FINDINGS (ISAP VII.C)

1. OUT OF SCOPE FINDINGS (NO PROGRAMMATIC PROCEDURE)
2. ADEQUACY OF INSPECTION INSTRUCTIONS
3. PREPARATION OF INSPECTION CHECKLISTS
4. INSPECTION/INSPECTOR ADEQUACY
5. OVERVIEW OF ERC PROGRAM
6. CPRT CORRECTIVE ACTIONS/SRT SUBCOMMITTEE ACTIONS

INSPECTION FINDINGS OTHER AREAS

1. BUNKER RAMO PENETRATIONS AND SPLICES
2. CABLE SPLICES IN CABLE TRAYS
3. CABLE GRIPS
4. NONCONFORMANCE REPORT/CONCRETE IN GAP
5. DESIGN CHANGE AUTHORIZATION/RICHMOND INSERT IN PLACE OF HILTI
6. DCA AUTHORIZING CONDUIT INSTALLATION WITH JUSTIFICATION BASED ON A DAMAGE CONTROL INSPECTION THAT NEVER OCCURRED
7. CABLE TRAY SUPPORTS (ENFORCEMENT ACTION BEING RECOMMENDED)
8. SUPER HILTI's/OMBUDSMAN FILES
9. MATERIAL COMPLIANCE
10. ALLEGATIONS INVOLVING ONSITE CONSULTANT (PAC)
11. DRILLING THROUGH IMBEDDED PLATE AND INSTALLING HILTI's

EFFORT TO DATE APPROX. 8800 DIRECT INSPECTION
HOURS (THROUGH DECEMBER 1985)