

SYTEC INC.

Systems Technology

July 3, 1986

Ms. Patricia J. Whiston
U.S. Nuclear Regulatory Commission
Materials Licensing Section
Region III
700 Roosevelt Road
Glen Ellyn, IL 60137

Log July-18 III
Remitter Sytec, Inc.
Check No. 2022
Amount \$120
Fee 3N, 3P
Type AMD
Date Check 7/16/86
Date Completed 7/17/86
By: garcia

Dear Ms. Whiston:

SYTEC is requesting an ammendment to our current License #48-21261-01. This request consists of deleting one source, adding five new sites and adding two sources at two separate current sites.

The source to be deleted is located at:

Container Corporation of America
5000 Flat Rock Road
Philadelphia, PA

Manufacturer	Source	Serial #
Columbia Scientific	Fe-55	1503LG

The five new sites and the required source information to be added to the license are:

Shawano Paper Company
P.O. Box 437
Shawano, WI 54166

Manufacturer	Source	Serial #	Activity	Model #
AccuRay	Kr-85	K-1209-A	500 mci	U-7
AccuRay	Kr-85	K-1063-A	500 mci	U-7
AccuRay	Kr-85	K-1273-A	500 mci	U-7

Kimberly-Clark Corporation
Lakeview Mill
249 North Lake Street
Neenah, WI 54956

Manufacturer	Source	Serial #	Activity	Model #
AccuRay	Kr-85	K-4562-X	500 mci	U-7
AccuRay	Kr-85	K-4628-X	500 mci	U-7

8702060195 861020
REG3 LIC30
48-21261-01 PDR

CONTROL NO. 81683

RECEIVED

JUL 14 1986

REGION III

JUL 14 1986

2525 South Oneida Street
Appleton, Wisconsin 54915
(414) 734-2500

Page 2

Kimberly-Clark Corporation
Neenah Paper Division
135 North Commercial Street
Neenah, WI 54956

<u>Manufacturer</u>	<u>Source</u>	<u>Serial #</u>	<u>Activity</u>	<u>Model #</u>
AccuRay	Kr-85	K-1342-A	500 mci	U-7
AccuRay	Kr-85	K-1341-A	500 mci	U-7
AccuRay	Kr-85	K-1340-A	500 mci	U-7

Ward Paper Company
P.O. Box 587
Merrill, WI 54452

<u>Manufacturer</u>	<u>Source</u>	<u>Serial #</u>	<u>Activity</u>	<u>Model #</u>
AccuRay	Kr-85	K-1057-E	250 mci	O-7

Appleton Paper Company
825 E. Wisconsin Avenue
Appleton, WI 54911

<u>Manufacturer</u>	<u>Source</u>	<u>Serial #</u>	<u>Activity</u>	<u>Model #</u>
Sentrol	Kr-85	KS-092	500 mci	Betameter III

SYTEC is adding two new sources at two separate, current sites. The information is as follows:

Michigan Paper Board Company
79 E. Fountain Street
Battle Creek, MI 49015

<u>Manufacturer</u>	<u>Source</u>	<u>Serial #</u>	<u>Activity</u>	<u>Model #</u>
AccuRay	Sr-90	S-1236-T	70 mci	O-7

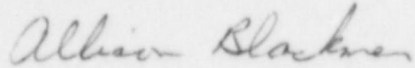
Bostik Corporation
Industrial Road
Marshall, MI

<u>Manufacturer</u>	<u>Source</u>	<u>Serial #</u>	<u>Activity</u>	<u>Model #</u>
NDC	Am-241	1134	150 mci	101

Page 3

The required additional information sheets for the Sentrol Betameter III gauging device are enclosed. If you have any questions concerning this ammendment, please feel free to contact me.

Sincerely,

A handwritten signature in cursive script that reads "Allison Blackmer".

Allison Blackmer
Applications Manager

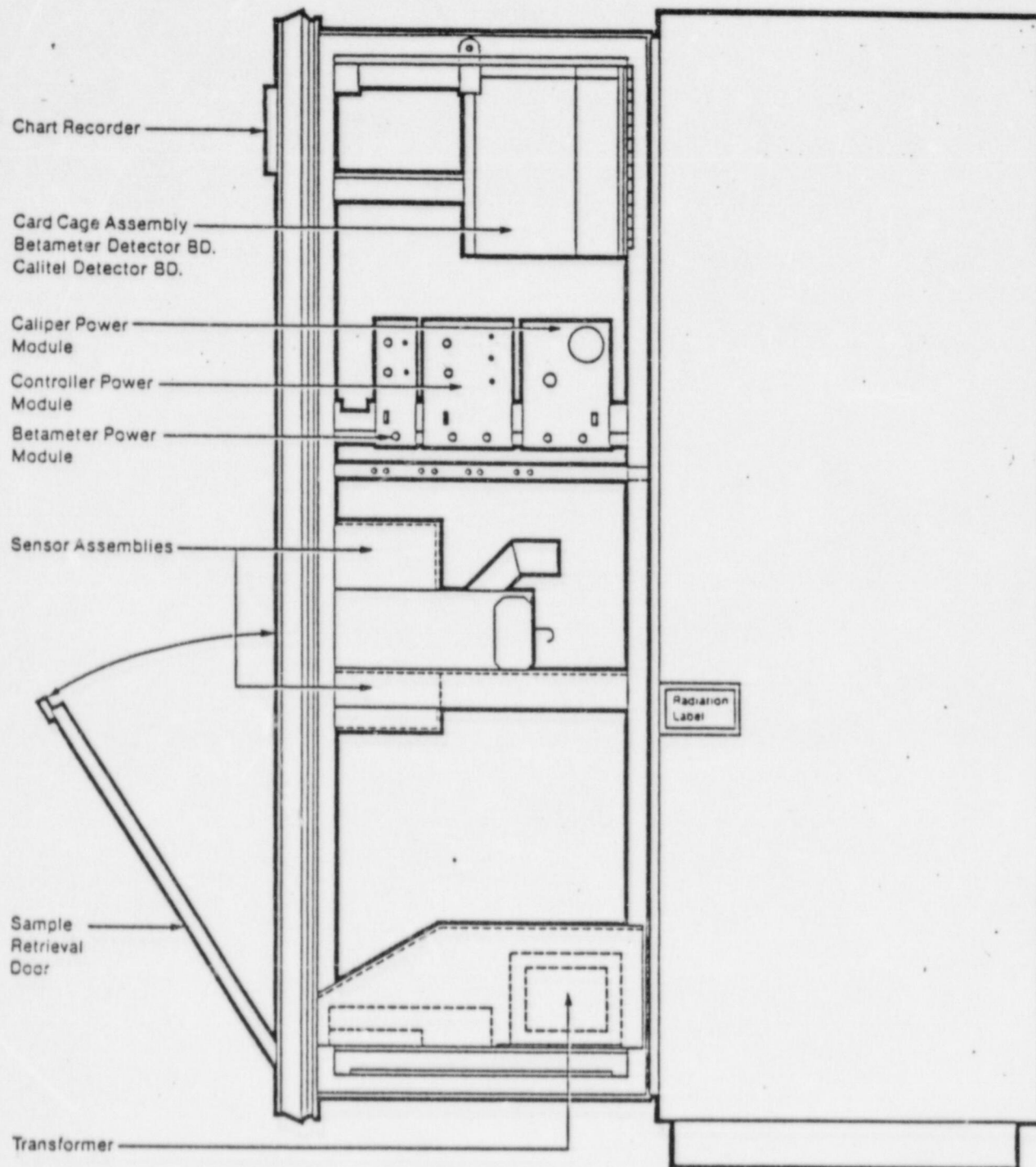
Enclosures

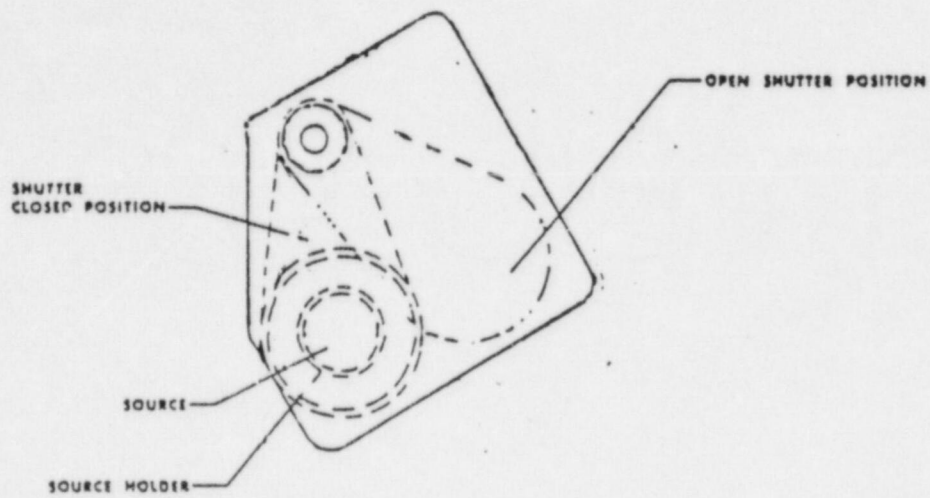
CONTROL NO. 81683

6.10 Sentrol Profilograph with Betameter III Sensor

The Sentrol Profilograph is a stationary gauging device utilizing a Kr-85 source as the radiation source, therefore, a source wipe is not required.

In order to check the shutter mechanism, with the shutter open, disconnect power to the shutter solenoid. The shutter should close automatically and should not reopen until the solenoid is reconnected to the power.





SOURCE-SHUTTER RELATIONSHIP

