

WAHIAWA
GENERAL
HOSPITAL

1986 MAY 21 AM 11:23

REGION V

128 Lehua St.
P.O. Box 580
Wahiawa, Hawaii 96786
Phone (808) 621-8411



E' Ulu A Mālama Nou
Growing & Caring for You

May 16, 1986

Ms. B. A. Riedlinger
Health Physicist (Licensing)
Materials Radiation Protection
Inspection & Licensing Section
U.S. Nuclear Regulatory Commission
Region V
1450 Maria Lane, Suite 210
Walnut Creek, California 94586

Dear Ms. Riedlinger:

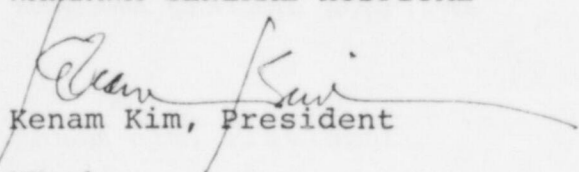
Enclosed please find a report of our decommissioning survey of the former Nuclear Medicine facility (Room 116) at Wahiawa General Hospital. As per the conditions of NRC License No. 53-17839-01, your office must approve the enclosed report before unrestricted use of the area is permitted.

We hope we have satisfactorily met the decommissioning standards set by the NRC and would appreciate your prompt consideration of this survey.

Please feel free to call me at (808) 621-8411, if you should have any questions.

Sincerely yours,

WAHIAWA GENERAL HOSPITAL


Kenam Kim, President

KK:mh

Enclosure

RECEIVED BY	
Date	5/30/86
Let	May 15
By	Resnick
Date Completed	5/30/86

8607300298 860611
REG5 LIC30
53-17839-01 PDR

FEE EXEMPT
Survey

70393

~~70393~~

DECOMMISSIONING SURVEY REPORT

Preface

The following is a report of a decommissioning effort on behalf of NRC License No. 53-17839-01. The premises referred to below is Room 116 on the first floor of Wahiawa General Hospital previously occupied by the Nuclear Medicine Department. See Figure 1 for detailed floor plan of the premises.

Scope and Procedures of Survey and Wipe Tests

The premises were surveyed on May 12, 1986. A Victoreen Survey Meter (Model 493, Serial No. 1065) with a Pancake Probe (Model 489-110, Serial No. 666) was used for the survey of the facility. The Cs-137 efficiency of this instrument is 0.55%. The instrument was last calibrated on 5/1/86. The criteria used is that specified in the July 1982 issue of "Guidelines for Decontamination of Facilities and Equipment Prior to Release for Unrestricted Use or Termination of License for By-Product, Source, or Special Nuclear Material."

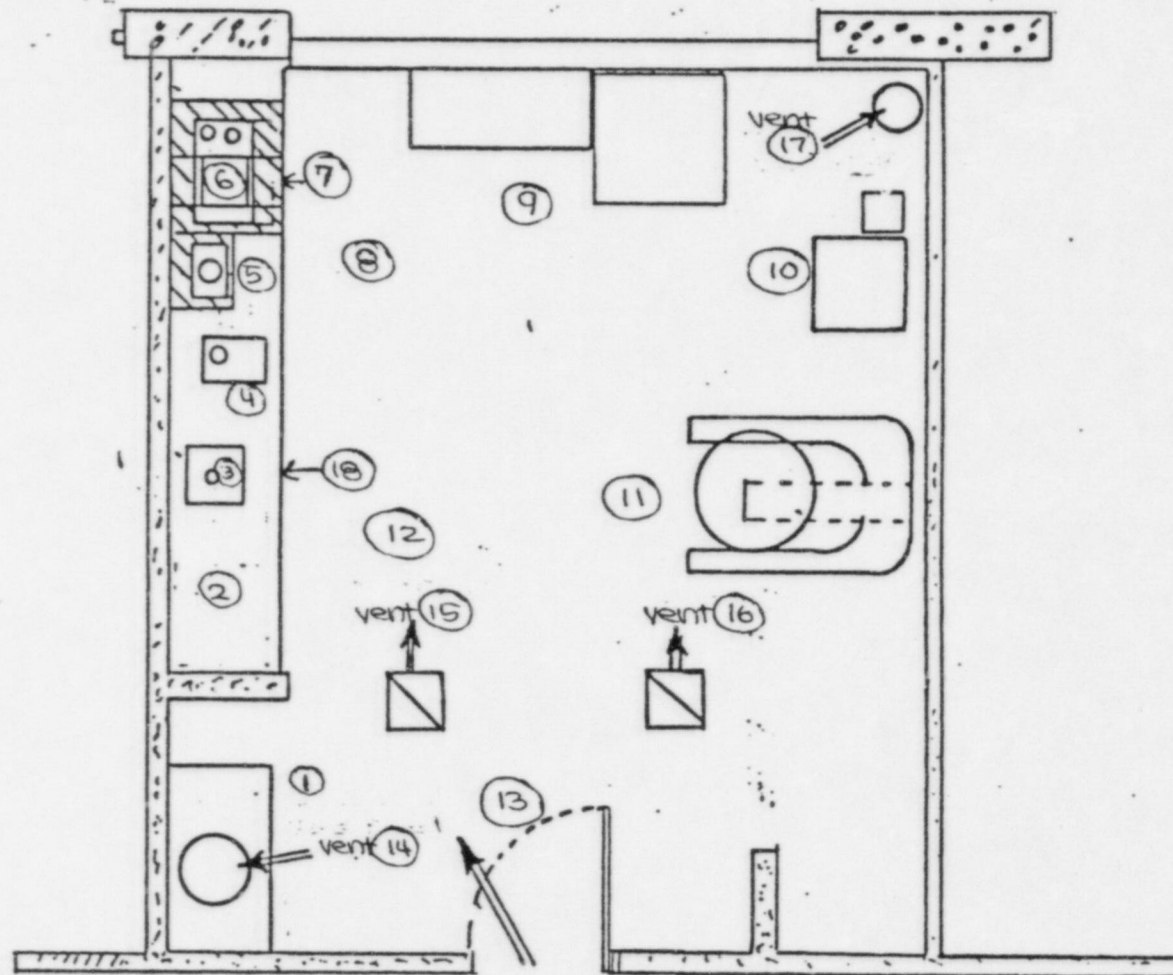
All floor surface and fixtures such as sink, ventilation grates, and shelves were surveyed. No area registered above the background reading of 60 cpm. Wipe specimens were taken in 18 locations. Wipes were taken with 4.5 cm circles of medium weight fabric. The wipes were made over 100 sq. cm. area using moderate pressure. The locations of the wipes are indicated on Figure 1. The circled numbers are the locations of the wipes. The wipes were counted in a Nuclear Chicago scintillation well and Canberra multichannel analyzer with the high voltage set for Co-57 detection and for beta detection with a Nuclear Chicago scaler and GM detector. No wipes registered above background level.

Summary of the Findings of the Survey

No area of fixed contamination was found on survey with the GM survey meter. No area of removable contamination was found by counting of wipes taken of the premises.

70373
70344



DECOMMISSIONING SURVEY REPORT Figure 1



DIRECTION OF AIR FLOW WITH DOOR OPEN

Premises were surveyed on May 12, 1986 using a Victoreen Model 493 survey meter with pancake probe. Wipes were taken at the circled numbered locations.

W. Rodenbeck 5/12/86

 SUPPLY VENT
 EXHAUST VENT

70513