



Duquesne Light

Nuclear Group
P.O. Box 4
Shippingport, PA 15077-0004

Telephone (412) 393-6000

April 29, 1986

Director of Nuclear Reactor Regulation
U. S. Nuclear Regulatory Commission
Attn: Mr. Peter S. Tam, Project Manager
Project Directorate No. 2
Division of PWR Licensing - A
Washington, DC 20555
- Mail Stop 340 -

Reference: Beaver Valley Power Station, Unit No. 1
Docket No. 50-334, License No. DPR-66
Combustible Waste Storage - Fire Protection

Gentlemen:

In your letter of February 21, 1986, DLC was requested to respond to the long-term solution to the combustible waste storage at BVPS-Unit 1 relative to fire protection. As noted in your letter, our interim solution was to establish administrative controls for combustibles in the Primary Auxiliary Building (PAB) which was verified by NRC Inspection Report #80-03. At the time Amendment #18 to our Technical Specifications was issued (SER dated June 6, 1979), our long-range plan was to construct a common (Unit 1 and Unit 2) waste compaction building and a waste storage and handling building to accommodate both plants. In 1982, the total work package (DCP-172) was split into two separate tasks to facilitate engineering and accounting work. Design Change Package (DCP) 568 was initiated to provide for the construction of the waste storage and handling facility. Design Change Package (DCP) 569 was initiated to provide for the construction of a shielded facility for processing low-level combustible waste from Units 1 and 2. In addition, a temporary structure was erected within the plant protected area in the southeast yard to temporarily house compacted solid waste generated at Unit 1.

In 1983, the engineering and design work for the projected two-story waste compaction building (DCP-569) was temporarily placed on hold due to interference problems with the Unit 2 project. A subsequent evaluation of the need for a dedicated waste compaction building was performed and, as a result, the engineering work was cancelled in August of 1985 and the project placed on indefinite hold.

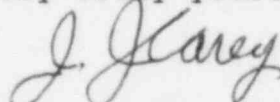
8605060227 860429
PDR ADOCK 05000334
G PDR

A006
1/1

At present, our long-term plan is to complete, within the year, the permanent waste storage and handling facility (DCP-568). This facility will be provided with appropriate fire detection and suppression coverage. This will not eliminate our uncompact waste in the PAB areas as temporary combustible storage created by handling and sorting materials (anti-C clothing, gloves, etc) will still be evident, and the existing waste compacting area in Unit I will continue to be utilized. Accordingly, as to our long-term solution to combustible waste storage in the auxiliary building, we have initiated action (DCP 703) to install an automatic sprinkler water suppression system and an early warning detection system in the areas of concern in the PAB. Partial area coverage will be provided for the designated areas noted on the attached sketches (cross-hatch areas) for PAB 735, 752 and 768 floor levels. The top two floor levels are scheduled for completion this outage (5th Refueling outage - projected to be completed in August 1986). The PAB 735 level, due to the seismic restraints and obstructions in the area of installation, will be completed after the outage. In the interim, combustible waste storage will be controlled and, to the extent practical, kept in closed metal containers. We believe these actions to be adequate in addressing the contaminated waste storage issue.

We will keep you apprised of the progress. If there are any questions or clarifications, please contact my staff.

Very truly yours,


J. J. Carey
Vice President, Nuclear

Enclosure

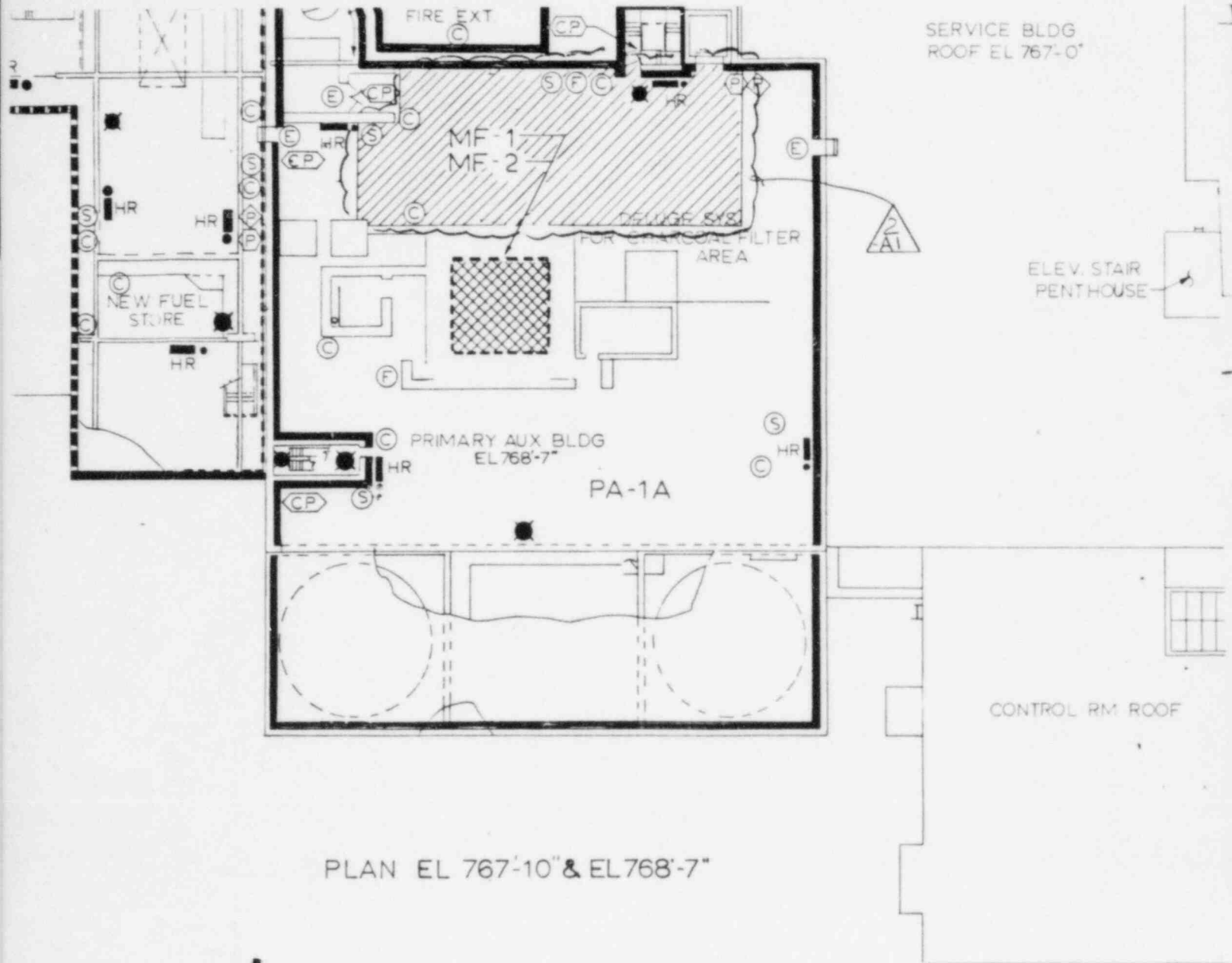
cc: Mr. W. M. Troskoski, Resident Inspector
U. S. Nuclear Regulatory Commission
Beaver Valley Power Station
Shippingport, PA 15077

U. S. Nuclear Regulatory Commission
c/o Document Management Branch
Washington, DC 20555

Director, Safety Evaluation & Control
Virginia Electric & Power Company
P.O. Box 26666
One James River Plaza
Richmond, VA 23261

Mr. Peter Tam, Project Manager
U. S. Nuclear Regulatory Commission
Project Directorate No. 2
Division of Licensing - A
Washington, DC 20555

"Combustible Waste Storage - Fire Protection"



PLAN EL 767'-10" & EL 768'-7"

DUQUESNE LIGHT COMPANY ENGINEERING & CONSTRUCTION PITTSBURGH, PA.				FIRE PROTECTION ARRANGEMENT	
SCALE 1/2"=20'-0"	DATE 8-25-80	ARCH. APP.		BEAVER VALLEY POWER STATION UNIT NO. 1	
	DRAWN A. SHAH	ELECT. APP.		O. F. E. No.	AA No. 8700-RB-2P
	CHECKED J. RISSETTE	MECH. APP.		C. O. No.	
	INSPECTED	STRUCT. APP.			

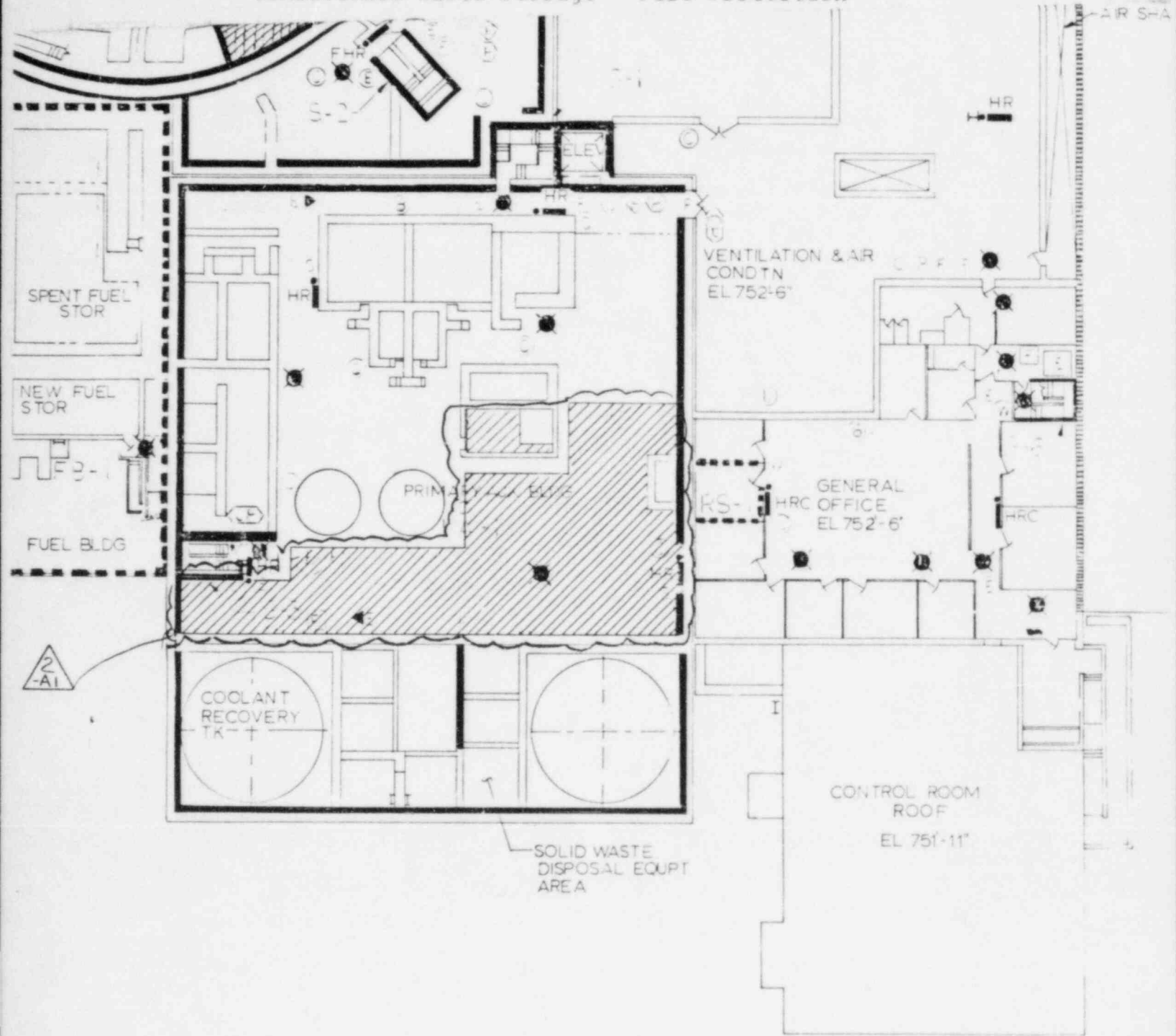
①	ARCH	CONC	MECH	STEEL	VESSEL	BS	E.E.C
						20	10

TRIM LINE

S&W DWG. NO. 11700-RB-2P-2A1

Engineer Extra

"Combustible Waste Storage - Fire Protection"



PLAN EL 752'-6"

DUQUESNE LIGHT COMPANY
ENGINEERING & CONSTRUCTION PITTSBURGH, PA.

FIRE PROTECTION ARRANGEMENT

SCALE	DATE 6-25-80	ARCH. APP.
1"=20'-0"	DRAWN A R SHAP	ELECT. APP.
	CHECKED BRASSETT	MECH. APP.
	INSPECTED	STRUCT. APP.

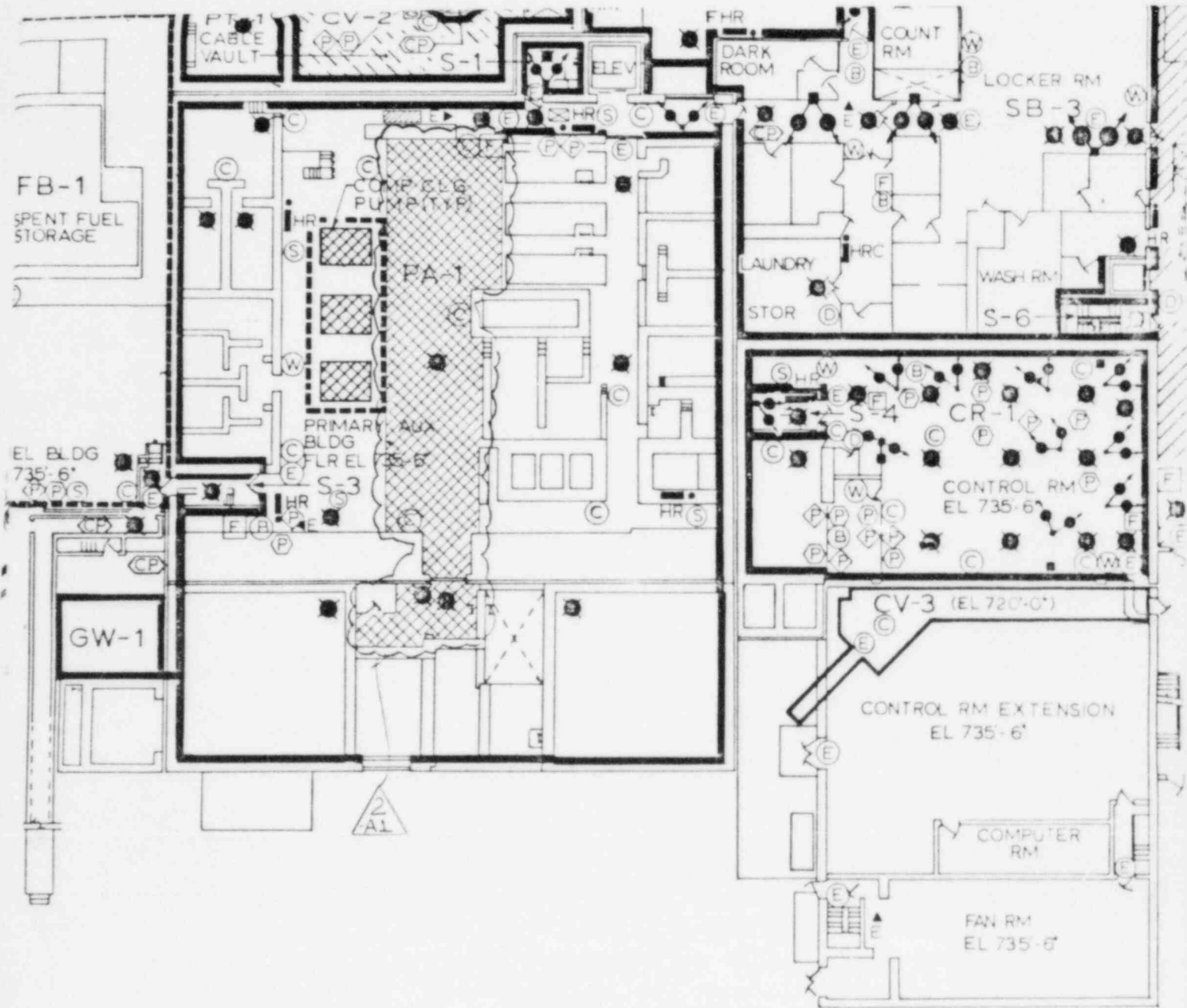
BEAVER VALLEY POWER STATION UNIT NO 1	
O. F. E. No.	AA No. 8700-RB-2N
C. O. No.	

S&W DWG. NO. 11700-RB-2N-2A1

ARCH	CONC	MECH	STEEL	VESSEL	BS	ELEC
------	------	------	-------	--------	----	------

TRIM LINE

Extra Prints
Engineer
TITOL BROOK



PLAN EL 735'-6"

DUQUESNE LIGHT COMPANY ENGINEERING & CONSTRUCTION PITTSBURGH, PA.			FIRE PROTECTION ARRANGEMENT I		Engineer L. J. ...
BEAVER VALLEY POWER STATION UNIT NO 1			AA No. 8700-RB-2M		
SCALE	DATE	ARCH APP	O.F.E. No.		
1/4" = 1'-0"	4-15-86	ELECT APP	C.O. No.		
		MECH APP			
		STRUCT APP			

S&W DWG. NO. 11700-RB-2M-2A1								
①	ARCH	COND	MECH	STEEL	VESS	PS	ELEV	TRIM LINE