



McDonough District Hospital

525 East Grant Street - Macomb, Illinois 61455 - 309/833-4101

March 6, 1986

U. S. Nuclear Regulatory Commission
Radioisotopes Licensing Section
Region III
799 Roosevelt Road
Glen Ellyn, Illinois 60137

Re: Amendment to NRC Radioactive Materials License #12-18853-01

Gentlemen:

We request amendment to our NRC Radioactive Materials License #12-18853-01 for the following:

Add Sarah D. Culbertson Memorial Hospital as a recipient of transported radiopharmaceuticals from McDonough District Hospital, Macomb, Illinois.

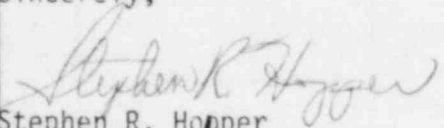
Radioactive material will be transported according to IDNS and DOT regulations, under the direction and supervision of D. R. Samuelson, M.D.; R. J. Rettenmaier, M.D.; G. R. Zimmerman, M.D.; R. C. Watson, M.D.

Please reference "Transporting Radioactive Materials" attachment.

Enclosed is a facility sketch of Sarah D. Culbertson Memorial Hospital and letter of authorization from the Administrator of Sarah D. Culbertson Memorial Hospital.

We trust the information contained herein is sufficient to grant our request for amendment. Enclosed is our check for \$120 to cover the cost of the amendment processing fee.

Sincerely,


Stephen R. Hopper
President/CEO

:amw

Remitter	MDH
Check No.	26924
Amount	\$120
Date	3/24/86
Completed	3/26/86
* Check Returned	

RECEIVED

MAR 17 1986

REGION III

8607090063 860501
REG3 LIC30
12-07431-01 PDR

CONTROL NO. 80907

MAR 17 1986

TRANSPORTING RADIOACTIVE MATERIALS (Page 1 of 2)

There will be no storage of radioactive materials at any of the satellite hospitals. Any used radioactive sources or syringes containing residual radioactivity will be returned to this licensee's storage area.

TRANSPORT PROCESS:

All radioactive material will be transported by van or car by the licensed physician users or Nuclear Medicine technologist employed by this license applicant. This carrier will be responsible for pickup, packaging, and transporting radioactive materials between the base and satellite hospitals. Radioactive materials will at all times be in the possession of this individual during the entire transporting process.

PACKAGE DESCRIPTION:

All radioactive materials will be placed within lead shipping containers sufficient to reduce external exposure to background levels or as low as reasonably achievable. These lead shipping containers will be sealed with tape and placed in a DOT approved container which is locked to restrict access by unauthorized personnel and secured to the vehicle. Through layering of absorbent material in the package, the lead shipping container(s) will be placed in the geometrical center of the package.

Any applicable Department of Transportation regulations with reference to vehicle placarding will be followed.

LABELING:

Package: The package described above will be labeled on opposite sides with "radioactive materials package" labels as specified in 49CFR172.403 and 172.436 through 172.438. Appropriate "radioactive materials package" labels will be determined by exposure rate limits as specified in 49CFR172.399. "Caution - Radioactive Materials" label and the trefoil radiation symbol will be posted on the top of the package.

VIALS AND/OR SYRINGES:

Each vial or syringe containing radioactive material will be labeled to note the following:

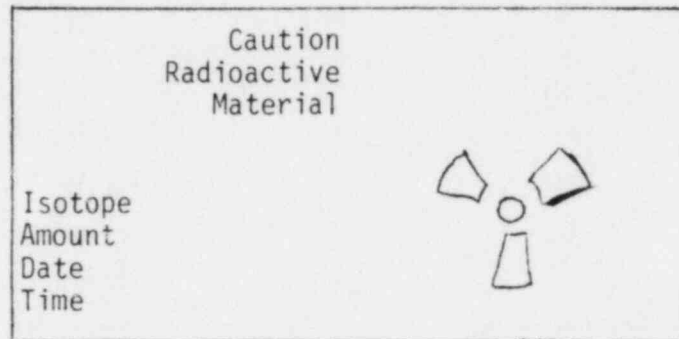
1. Date and time of assay
2. Radioactive material identity (Radionuclide and chemical form)

TRANSPORTING RADIOACTIVE MATERIALS (PAGE 2 of 2)

3. Activity at time of assay.

Each label will contain the trefoil radiation symbol and the words "Caution-Radioactive Materials".

Sample Label



The above sample is a facsimile of Nuclear Associates, Inc. Model 09-112, pressure sensitive tape with official NRC radiation symbol in magenta on a yellow background. Each label from this roll tape measures about 1" wide by 2" in length.

ASSAYS

All assays, material preparations, packaging, and labeling will be performed only by a licensed nuclear physician user or his/her designated, trained nuclear technologist.

Each patient dose will be assayed in our hot lab dose calibrator prior to transport. A decay chart, or decay calculations, will then be used at each facility to define any applicable corrections in actual patient dosage, at time of dose administration.

RADIATION SAFETY AND SECURITY

The radioactive material transport container will be secured in a locked car trunk, or compartment in the locked van, as far away as possible from the driver compartment. Transportation of passengers is not anticipated. The transport container will be braced or anchored to prevent shifting of the container during transport. The drivers are instructed to call the licensee's main office if any delays are encountered in service-schedule routes and to check in when they arrive at the service facility. In the event an undue delay occurs and no call-in report is made, the main office would conduct a search along the transport route. In the event an accident occurs which could involve contamination or public concern, the main office (R.S.O. or his/her delegate) would immediately report such an incident to the appropriate nuclear materials licensing and inspection authorities as designated on the "Notice to Employees" sign, required to be posted in the main office (hot lab) facility.

The Radiation Safety Program in this application is applicable to the temporary job sites as well as to the base lab.

Sarah D. Culbertson Memorial Hospital
Rushville Illinois

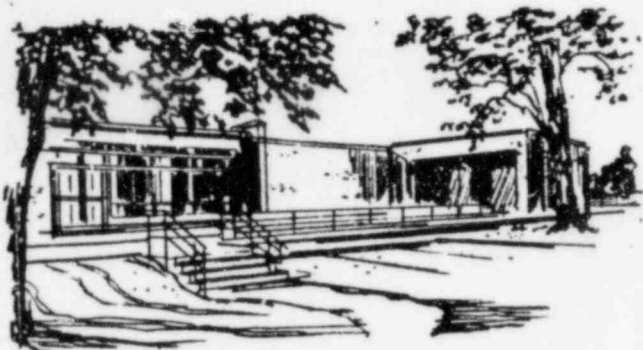
outside

$\frac{1}{2}" = 1 \text{ foot}$

Corridor

11' x 12'

Nurses Library



Sarah D. Culbertson MEMORIAL HOSPITAL

238 South Congress Street
RUSHVILLE, ILLINOIS 62681

January 17, 1986

Mr. Stephen R. Hopper
Chief Executive Officer
McDonough District Hospital
525 East Grant Street
Macomb, Illinois 61455

Dear Mr. Hopper:

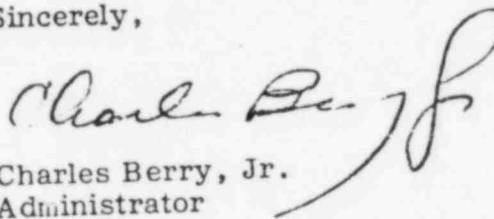
On behalf of the Culbertson Hospital, I hereby authorize McDonough District Hospital to include the Sarah D. Culbertson Memorial Hospital on the McDonough District NRC License and the Illinois Department of Radiation Safety Licenses.

The Sarah D. Culbertson Memorial Hospital also grants permission to McDonough District Hospital to transport radiopharmaceuticals for diagnostic purposes to the Culbertson Hospital.

I understand that it will probably take several months to complete and receive licensure from both NRC and the State Radiation Safety people. I will be in touch with you in the meantime.

Please let me know if you have any questions.

Sincerely,


Charles Berry, Jr.
Administrator

CB:ns

cc: D. R. Samuelson, M.D.

CONTROL NO. 

CONTROL NO. 80907