

NOV 7 1986

Campbell, McQueen & Paris, Engineers  
ATTN: Mr. John L. Bradwell  
13873 Park Center Road, Suite 1  
Herndon, VA 22071-3284

Gentlemen:

This refers to your letter dated October 16, 1986, for an amendment to Materials License 08-23510-01.

An amendment fee of \$60 is required as specified in §170.31 (3P) of 10 CFR 170, copy enclosed. Payment should be made to the U.S. Nuclear Regulatory Commission and mailed to my attention at our Washington, D.C. address.

Your application will be processed by the Region II Licensing staff located at 101 Marietta Street, Suite 2900, Atlanta, Georgia 30323. The fee, however, is required prior to issuance of the amendment. When submitting the fee, please refer to CONTROL NUMBER 251279.

Sincerely,

*mm*  
*jm* Glenda Jackson  
License Fee Management Staff  
Office of Administration

Enclosure:  
10 CFR 170

cc: Region II

DISTRIBUTION:  
Pending Fee File  
Weekly Reading File  
Material Reading File  
DW/RII/CM&PE

OFFICE: LFMS:ADM *mm*  
SURNAME: MMessier:rej  
DATE: 11/7/86

LFMS:ADM *mm*  
GJackson *jm*  
11/7/86

8701090565 *XA*

*record  
copy*

CMp

*Campbell, McQueen, & Paris, Engineers*

*A Professional Corporation*

June 14, 1985

MS 18  
P9

Mr. John E. Glen, Ph.D., Chief  
Nuclear Regulatory Commission  
Region 1  
631 Park Avenue  
King of Prussia, Pennsylvania 19406

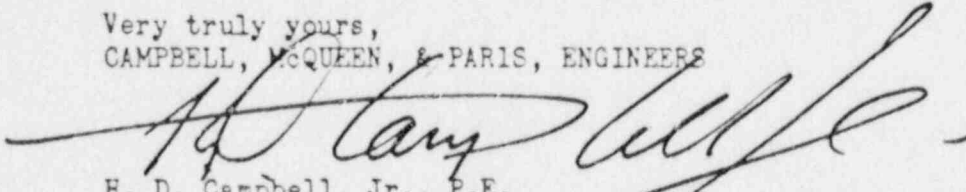
RE: Additional Information Requested to  
Complete Application for Material  
License Docket No. 030-22288  
Control No. 18640

Dear Sir:

In response to your letter dated May 27, 1985 we have enclosed the additional information you requested. We believe this information will meet with your approval and we apologize for this unprecedented delay.

Should you have any question, please do not hesitate to contact me.

Very truly yours,  
CAMPBELL, McQUEEN, & PARIS, ENGINEERS

  
H. D. Campbell, Jr., P.E.

- enclosures: 1. Training and experience of William Abrams (Page 2).  
2. Company Policy to prevent unauthorized removal of the nuclear gauge from the permanent storage area (Page 3).  
3. Drawing of permanent storage area (Page 4).

HDC/JC:ljo

8507240309 850711  
REG1 LIC30  
08-23510-01 PDR

Page 1

18640

"OFFICIAL RECORD COPY"

## TRAINING AND EXPERIENCE OF WILLIAM ABRAMS

### TRAINING:

Completed Troxler Electronic Laboratories, Inc. Training Course for the use of Nuclear Testing Equipment, College Park, Maryland - 1981.

### EXPERIENCE:

Nuclear Testing with 2 Troxler 3200 series testing machine on projects throughout the states of Virginia and Maryland. Nuclear Protection Officer for 11 million dollar Runway Embankment project at Raleigh-Durham Airport, Raleigh, N.C. State Nuclear Radio Active Material License No. 092-729-1.

Radiation Safety Officer, 1980 to 1983  
Hayes Seay Matter and Mattern  
Rockville, Maryland

Radiation Protection Officer, 1983 to Present  
Campbell, McQueen, & Paris, Engineers  
Raleigh Durham Airport  
Raleigh, North Carolina

N.C. Department of Human Resources  
Radioactive Material License No. 092-729-1, Expires 31 October, 1989

LOCATION OF PERMANENT STORAGE AREA FOR NUCLEAR GAUGE AND COMPANY POLICY TO  
PREVENT ITS UNAUTHORIZED REMOVAL FROM PERMANENT STORAGE AREA

LOCATION:

The permanent storage area of our Troxler 3400 series Nuclear Gauge is  
Storage Room No. 102 which is located in our main office at:

Dulles International Airport  
Gateway Building 1, Suite 110  
400 West Service Road  
Chantilly, Virginia 22021

Enclosure No. 3, page 4 of this letter is a layout drawing of our main  
office and depicts the location of the permanent storage area (Storage  
Room 102).

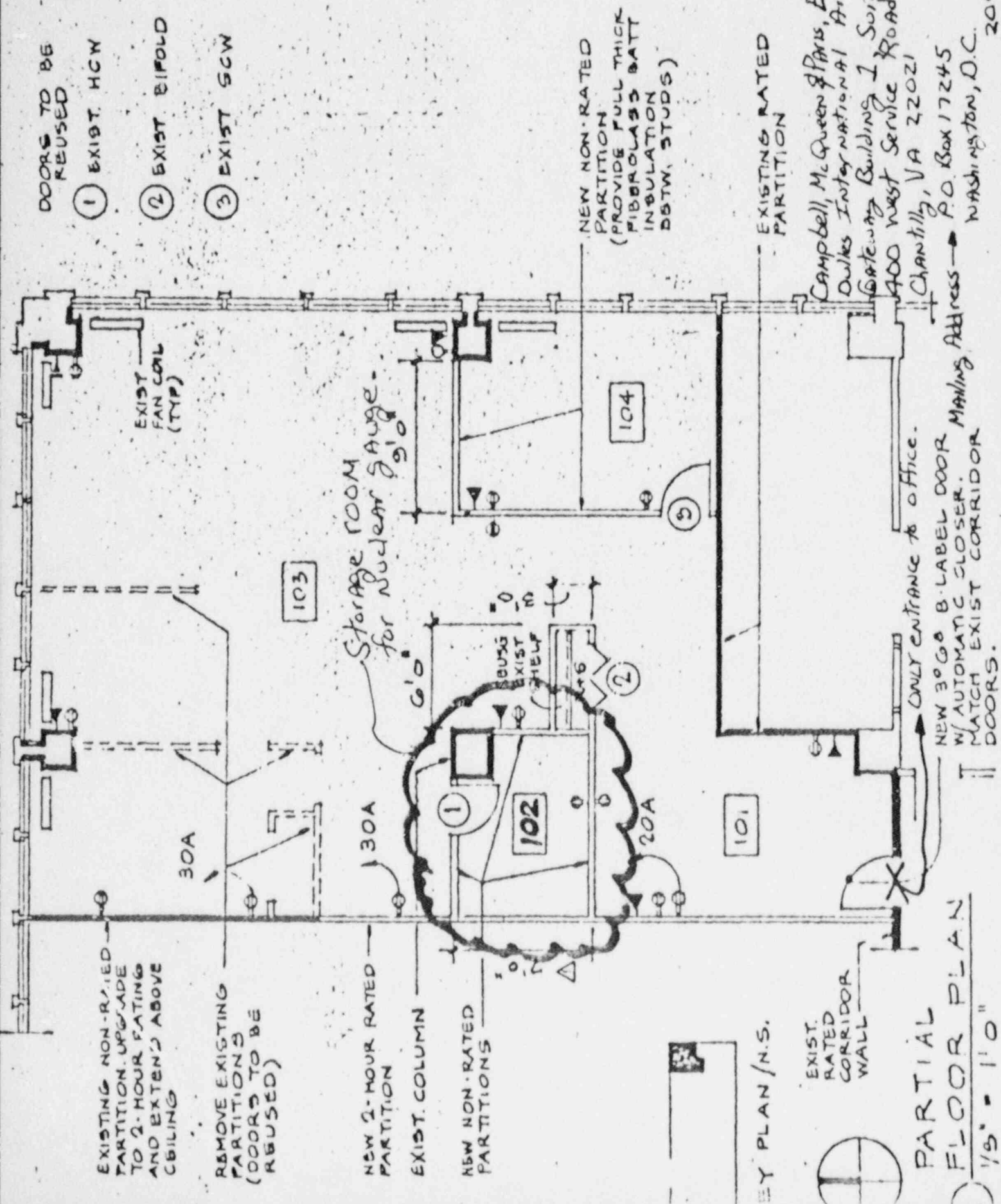
SECURITY:

To prevent the unauthorized removal of our Troxler 3400 series nuclear  
gauge from its permanent storage area, the company has the following  
security policy.

1. During normal business hours 8 am to 5 pm (Monday through  
Friday) the main office is open and continually staffed by  
company employers/employees.
2. When the office is closed, the only entrance to the office is  
locked with keys limited to designated employees.
3. All visitors to our office are escorted by members of our  
staff.

Enclosure 2  
Page 3

1/27/81 JUNE 13, 1981  
ENCLOSURE No 3



Campbell, McQueen & Paris, Engineers  
Dulles International Airport  
Gateway Building 1 Suite 110  
400 West Service Road  
Chantilly, VA 22021  
P.O. Box 17245  
Washington, D.C. 20041

PARTIAL  
FLOOR PLAN  
1/8" = 1'0"

KEY PLAN/N.S.

EXIST.  
RATED  
CORRIDOR  
WALL

ONLY ENTRANCE TO OFFICE.  
NEW 30" B-LABEL DOOR  
W/ AUTOMATIC CLOSER.  
MATCH EXIST CORRIDOR  
DOORS.

- DOORS TO BE  
REUSED
- ① EXIST. HCW
  - ② EXIST. BIFOLD
  - ③ EXIST. SCW

NEW NON-RATED  
PARTITION  
(PROVIDE FULL THICK  
FIBERGLASS BATT  
INSULATION  
DBTW STUDS)

EXISTING RATED  
PARTITION

EXISTING NON-RATED  
PARTITION. UPGRADE  
TO 2-HOUR RATING  
AND EXTEND ABOVE  
CEILING

REMOVE EXISTING  
PARTITIONS  
(DOORS TO BE  
REUSED)

NEW 2-HOUR RATED  
PARTITION

EXIST. COLUMN

NEW NON-RATED  
PARTITIONS