

PRECURSOR DESCRIPTION AND DATA

NSIC Accession Number: 112309

Date: March 8, 1976

Title: Gas Turbine Becomes Inoperable at Millstone

The failure sequence was:

1. The isolation condensor was inoperable.
2. It was decided to start the emergency power system (a gas turbine and a diesel generator) as a precaution as hurricane Belle passed.
3. The gas turbine failed to run because the governor was out of adjustment.
4. The reactor was placed in cold shutdown since both the IC and the FWCI systems were inoperable.

Corrective action:

The governor was adjusted.

Design purpose of failed system or component:

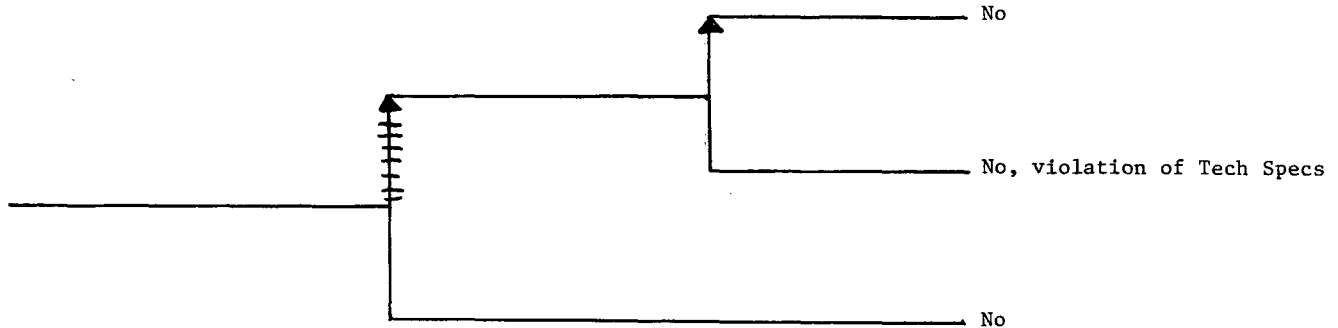
1. The I.C. is a natural circulation system which serves as a heat sink when the reactor is isolated.
2. The FWCI system provides for a source of high pressure coolant given a Loca.

Unavailability of system per WASH 1400: * —

Unavailability of component per WASH 1400: * —

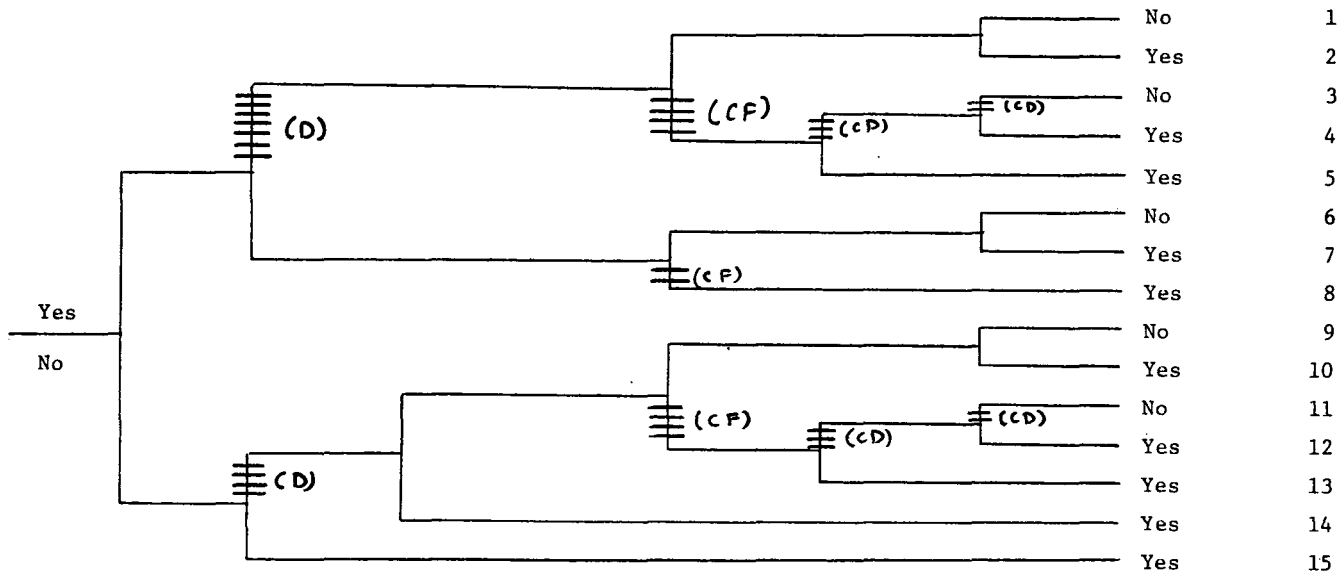
* Unavailabilities are in units of per demand D^{-1} . Failure rates are in units of per hour HR^{-1} .

With The I.C. Inoperable It Was Decided To Initiate The Gas Turbine For Precaution As Hurricane Bell Passed	The Gas Turbine Failed To Run	Reactor Placed In Cold Shutdown	Potential Severe Core Damage
---	-------------------------------	---------------------------------	------------------------------



NSIC 112309 - Actual Occurrence of Gas Turbine Becomes Inoperable at Millstone 1

Loss of Offsite Power	Reactor Scram	Diesel Start and Load	Reactor Made Sub-critical by the SBLCS Or Rods Are Manually Driven In	RCIC/HPCI Initiates	ADS/LPCI CS Initiates	Long Term Core Cooling	Potential Severe Core Damage	Sequence No.
-----------------------	---------------	-----------------------	---	---------------------	-----------------------	------------------------	------------------------------	--------------



CATEGORIZATION OF ACCIDENT SEQUENCE PRECURSORS

NSIC ACCESSION NUMBER: 112309

DATE OF LER: March 22, 1976

DATE OF EVENT: March 8, 1976

SYSTEM INVOLVED: I.C., FWCI, Emergency Power

COMPONENT INVOLVED: Governor

CAUSE: Out of adjustment

SEQUENCE OF INTEREST: Loss of offsite power.

ACTUAL OCCURRENCE: Gas Turbine Becomes Inoperable

REACTOR NAME: Millstone 1

DOCKET NUMBER: 245

REACTOR TYPE: BWR

DESIGN ELECTRICAL RATING: 660 MWe

REACTOR AGE: 5.4 yr

VENDOR: General Electric

ARCHITECT-ENGINEERS: Ebasco

OPERATORS: North East Nuclear Energy Company

LOCATION: Five miles SW of New London

DURATION: 12 (a) hours

PLANT OPERATING CONDITION: 100% power

SAFETY FEATURE TYPE OF FAILURE: (a) inadequate performance; (b) failed to start;
(c) made inoperable; (d) _____

DISCOVERY METHOD: Operational Event.

COMMENT: