



UNITED STATES  
NUCLEAR REGULATORY COMMISSION

REGION IV

611 RYAN PLAZA DRIVE, SUITE 400  
ARLINGTON, TEXAS 76011-8064

NOV - 6 1998

Garry L. Randolph, Vice President and  
Chief Nuclear Officer  
Union Electric Company  
P.O. Box 620  
Fulton, Missouri 65251

SUBJECT: U.S. NUCLEAR REGULATORY COMMISSION REGION IV  
ORGANIZATION CHART

Dear Mr. Randolph:

Enclosed you will find a current copy of the Region IV organization chart. Organizational changes were made, particularly in the Division of Reactor Projects, to facilitate the closure of the Region IV Walnut Creek Field Office and the relocation of Project Branch E from Walnut Creek, California, to Arlington, Texas. The closure was completed on September 30, 1998.

Should you have any questions concerning these organizational changes, please contact Mr. Thomas P. Gwynn of my staff at (817) 860-8248.

Sincerely,

Ellis W. Merschoff  
Regional Administrator

Docket No.: 50-483  
License No.: NPF-30

Enclosure:  
Organization Chart

cc w/enclosure:  
Professional Nuclear Consulting, Inc.  
19041 Raines Drive  
Derwood, Maryland 20855

John O'Neill, Esq.  
Shaw, Pittman, Potts & Trowbridge  
2300 N. Street, N.W.  
Washington, D.C. 20037

9811130216 981106  
PDR ADOCK 05000483  
P PDR

Union Electric Company

-2-

H. D. Bono, Supervising Engineer  
Quality Assurance Regulatory Support  
Union Electric Company  
P.O. Box 620  
Fulton, Missouri 65251

Manager - Electric Department  
Missouri Public Service Commission  
301 W. High  
P.O. Box 360  
Jefferson City, Missouri 65102

Ronald A. Kucera, Deputy Director  
Department of Natural Resources  
P.O. Box 176  
Jefferson City, Missouri 65102

Otto L. Maynard, President and  
Chief Executive Officer  
Wolf Creek Nuclear Operating Corporation  
P.O. Box 411  
Burlington, Kansas 66839

Dan I. Bolef, President  
Kay Drey, Representative  
Board of Directors Coalition  
for the Environment  
6267 Delmar Boulevard  
University City, Missouri 63130

Lee Fritz, Presiding Commissioner  
Callaway County Court House  
10 East Fifth Street  
Fulton, Missouri 65151

Alan C. Passwater, Manager  
Licensing and Fuels  
AmerenUE  
One Ameren Plaza  
1901 Chouteau Avenue  
P.O. Box 66149  
St. Louis, Missouri 63166-6149

J. V. Laux, Manager  
Quality Assurance  
Union Electric Company  
P.O. Box 620  
Fulton, Missouri 65251

Union Electric Company

-3-

Jeremy Uhlmann, Director  
State Emergency Management Agency  
P.O. Box 116  
Jefferson City, Missouri 65101

NOV - 6 1998

bcc to DCD (IE51)

bcc distrib. by RIV:

Regional Administrator  
 DRP Director  
 Branch Chief (DRP/B)  
 Project Engineer (DRP/B)  
 Branch Chief (DRP/TSS)

Resident Inspector  
 DRS-PSB  
 MIS System  
 RIV File  
 RIV Action Item File (98-215)

199032

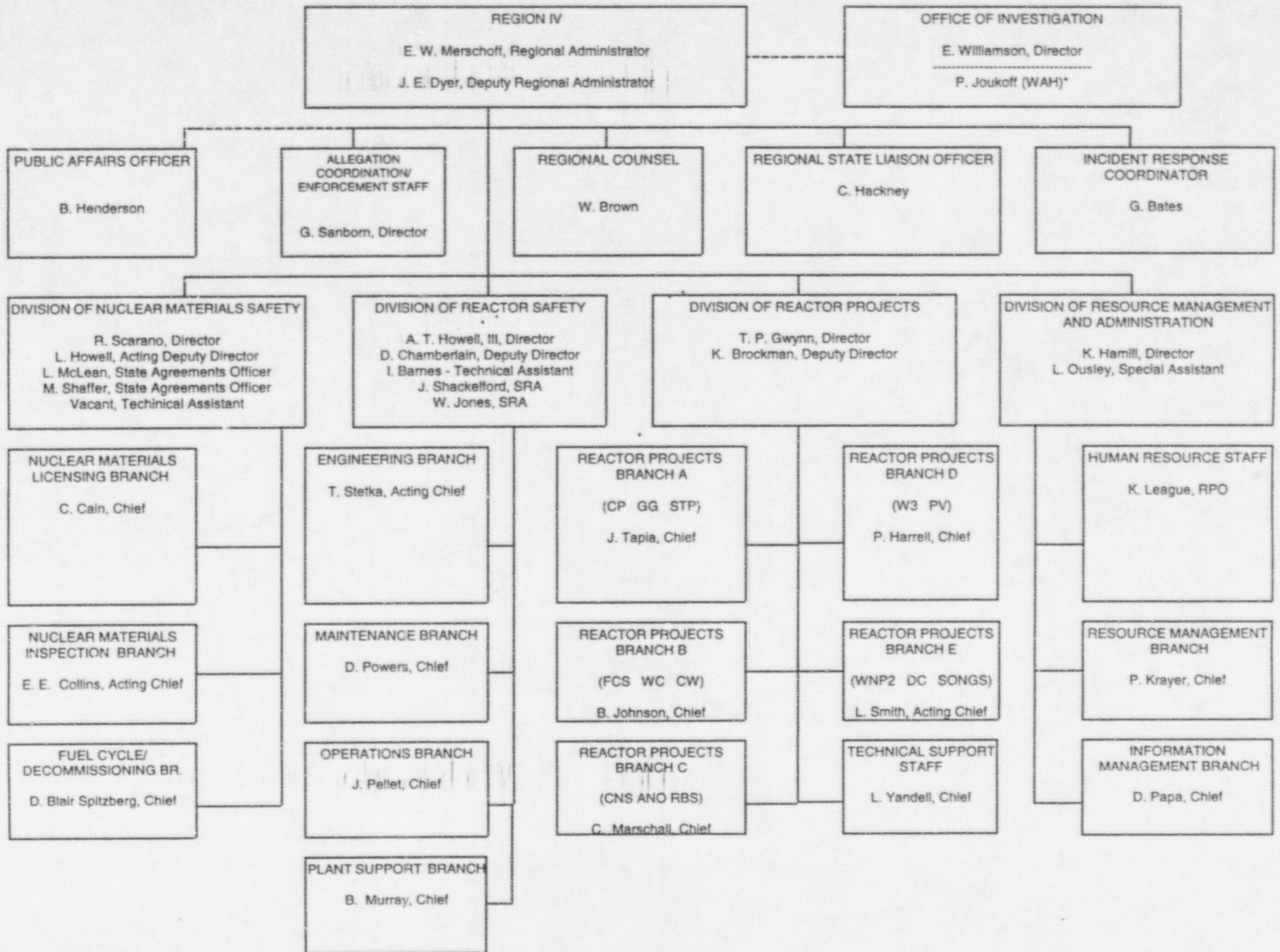
AI 98-215

DOCUMENT NAME: G:\DRPDIR\AI\98-215\CWY

To receive copy of document, indicate in box: "C" = Copy without enclosures "E" = Copy with enclosures "N" = No copy

RIV:D:DRP	DRA	RA				
TPGwynn;df	JEDyer	EWMetzchoff				
11/6/98	11/6/98	11/6/98				

OFFICIAL RECORD COPY



\*WORK AT HOME

NOV - 6 1998

bcc to DCD (IE51)

bcc distrib. by RIV:

Regional Administrator

DRP Director

Branch Chief (DRP/B)

Project Engineer (DRP/B)

Branch Chief (DRP/TSS)

Resident Inspector

DRS-PSB

MIS System

RIV File

RIV Action Item File (98-215)

AI 98-215

DOCUMENT NAME: G:\DRPDIR\AI\98-215\CWY

To receive copy of document, indicate in box: "C" = Copy without enclosures "E" = Copy with enclosures "N" = No copy

RIV:D:DRP	<i>df</i>	DRA		RA				
TPGwynn;df	<i>df</i>	JEDyer <i>JEDyer</i>		EWMetzschoff <i>EWMetzschoff</i>				
11/6/98		11/6/98		11/6/98				

OFFICIAL RECORD COPY