



UNITED STATES
NUCLEAR REGULATORY COMMISSION

REGION IV

611 RYAN PLAZA DRIVE, SUITE 400
ARLINGTON, TEXAS 76011-8064

NOV - 6 1998

Otto L. Maynard, President and
Chief Executive Officer
Wolf Creek Nuclear Operating Corporation
P.O. Box 411
Burlington, Kansas 66839

SUBJECT: U.S. NUCLEAR REGULATORY COMMISSION REGION IV
ORGANIZATION CHART

Dear Mr. Maynard:

Enclosed you will find a current copy of the Region IV organization chart. Organizational changes were made, particularly in the Division of Reactor Projects, to facilitate the closure of the Region IV Walnut Creek Field Office and the relocation of Project Branch E from Walnut Creek, California, to Arlington, Texas. The closure was completed on September 30, 1998.

Should you have any questions concerning these organizational changes, please contact Mr. Thomas P. Gwynn of my staff at (817) 860-8248.

Sincerely,

Ellis W. Merschoff
Regional Administrator

Docket No.: 50-482
License No.: NPF-42

Enclosure:
Organization Chart

cc w/enclosure:
Chief Operating Officer
Wolf Creek Nuclear Operating Corp.
P.O. Box 411
Burlington, Kansas 66839

Jay Silberg, Esq.
Shaw, Pittman, Potts & Trowbridge
2300 N Street, NW
Washington, D.C. 20037

9811130200 981106
PDR ADOCK 05000482
P PDR

Supervisor Licensing
Wolf Creek Nuclear Operating Corp.
P.O. Box 411
Burlington, Kansas 66839

Chief Engineer
Utilities Division
Kansas Corporation Commission
1500 SW Arrowhead Rd.
Topeka, Kansas 66604-4027

Office of the Governor
State of Kansas
Topeka, Kansas 66612

Attorney General
Judicial Center
301 S.W. 10th
2nd Floor
Topeka, Kansas 66612-1597

County Clerk
Coffey County Courthouse
Burlington, Kansas 66839-1798

Vick L. Cooper, Chief
Radiation Control Program
Kansas Department of Health
and Environment
Bureau of Air and Radiation
Forbes Field Building 283
Topeka, Kansas 66620

Mr. Frank Moussa
Division of Emergency Preparedness
2800 SW Topeka Blvd
Topeka, Kansas 66611-1287

NOV - 6 1998

bcc to DCD (IE51)

bcc distrib. by RIV:

Regional Administrator
DRP Director
Branch Chief (DRP/B)
Project Engineer (DRP/B)
Branch Chief (DRP/TSS)
RIV Action Item File (98-215)

Resident Inspector
SRI (Callaway, RIV)
DRS-PSB
MIS System
RIV File

180029

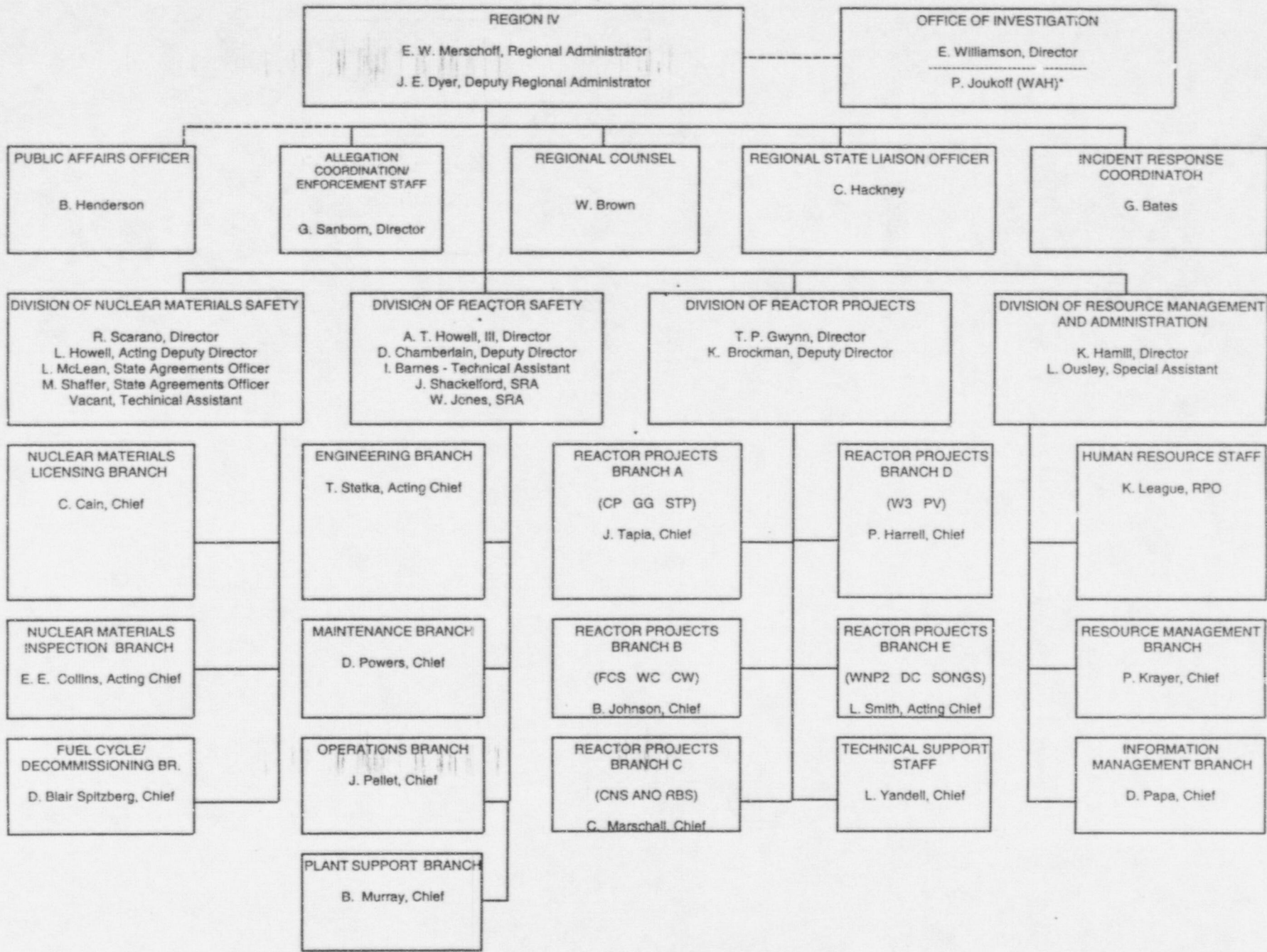
AI 98-215

DOCUMENT NAME: G:\DRPDIR\AI\98-215\WC

To receive copy of document, indicate in box: "C" = Copy without enclosures "E" = Copy with enclosures "N" = No copy

RIV:D:DRP	N	DRA	RA				
TPGwynn;df		JEDyer	EW Merschoff				
11/6 /98		11/6 /98	11/6 /98				

OFFICIAL RECORD COPY



*WORK AT HOME

NOV - 6 1998

bcc to DCD (IE51)

bcc distrib. by RIV:

Regional Administrator

DRP Director

Branch Chief (DRP/B)

Project Engineer (DRP/B)

Branch Chief (DRP/TSS)

RIV Action Item File (98-215)

Resident Inspector

SRI (Callaway, RIV)

DRS-PSB

MIS System

RIV File

AI 98-215

DOCUMENT NAME: G:\DRPDIR\AI\98-215\WC

To receive copy of document, indicate in box: "C" = Copy without enclosures "E" = Copy with enclosures "N" = No copy

RIV:D:DRP	N	DRA	RA					
TPGwynn;df		JEDyer	EW Merschhoff					
11/6 /98		11/6 /98	11/6 /98					

OFFICIAL RECORD COPY