



UNITED STATES
NUCLEAR REGULATORY COMMISSION

REGION IV

611 RYAN PLAZA DRIVE, SUITE 400
ARLINGTON, TEXAS 76011-8064

NOV - 6 1998

Charles M. Dugger, Vice President
Operations - Waterford 3
Entergy Operations, Inc.
P.O. Box B
Killona, Louisiana 70066

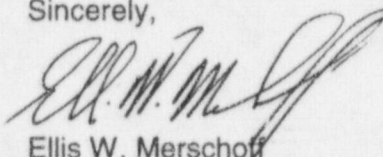
SUBJECT: U.S. NUCLEAR REGULATORY COMMISSION REGION IV
ORGANIZATION CHART

Dear Mr. Dugger:

Enclosed you will find a current copy of the Region IV organization chart. Organizational changes were made, particularly in the Division of Reactor Projects, to facilitate the closure of the Region IV Walnut Creek Field Office and the relocation of Project Branch E from Walnut Creek, California, to Arlington, Texas. The closure was completed on September 30, 1998.

Should you have any questions concerning these organizational changes, please contact Mr. Thomas P. Gwynn of my staff at (817) 860-8248.

Sincerely,



Ellis W. Merschoff
Regional Administrator

Docket No.: 50-382
License No.: NPF-38

Enclosure:
Organization Chart

cc w/enclosure:
Executive Vice President and
Chief Operating Officer
Entergy Operations, Inc.
P.O. Box 31995
Jackson, Mississippi 39286-1995

Vice President, Operations Support
Entergy Operations, Inc.
P.O. Box 31995
Jackson, Mississippi 39286-1995

9811130195 981106
PDR ADOCK 05000382
P PDR

Wise, Carter, Child & Caraway
P.O. Box 651
Jackson, Mississippi 39205

General Manager, Plant Operations
Waterford 3 SES
Entergy Operations, Inc.
P.O. Box B
Killona, Louisiana 70066

Manager - Licensing Manager
Waterford 3 SES
Entergy Operations, Inc.
P.O. Box B
Killona, Louisiana 70066

Chairman
Louisiana Public Service Commission
One American Place, Suite 1630
Baton Rouge, Louisiana 70825-1697

Director, Nuclear Safety &
Regulatory Affairs
Waterford 3 SES
Entergy Operations, Inc.
P.O. Box B
Killona, Louisiana 70066

William H. Spell, Administrator
Louisiana Radiation Protection Division
P.O. Box 82135
Baton Rouge, Louisiana 70884-2135

Parish President
St. Charles Parish
P.O. Box 302
Hahnville, Louisiana 70057

Winston & Strawn
1400 L Street, N.W.
Washington, D.C. 20005-3502

NOV - 6 1998

~~bcc to DCD (IE51)~~

bcc distrib. by RIV:

Regional Administrator

DRP Director

Branch Chief (DRP/D)

Project Engineer (DRP/D)

Branch Chief (DRP/TSS)

Resident Inspector

DRS-PSB

MIS System

RIV File

RIV Action Item File (98-215)

130023

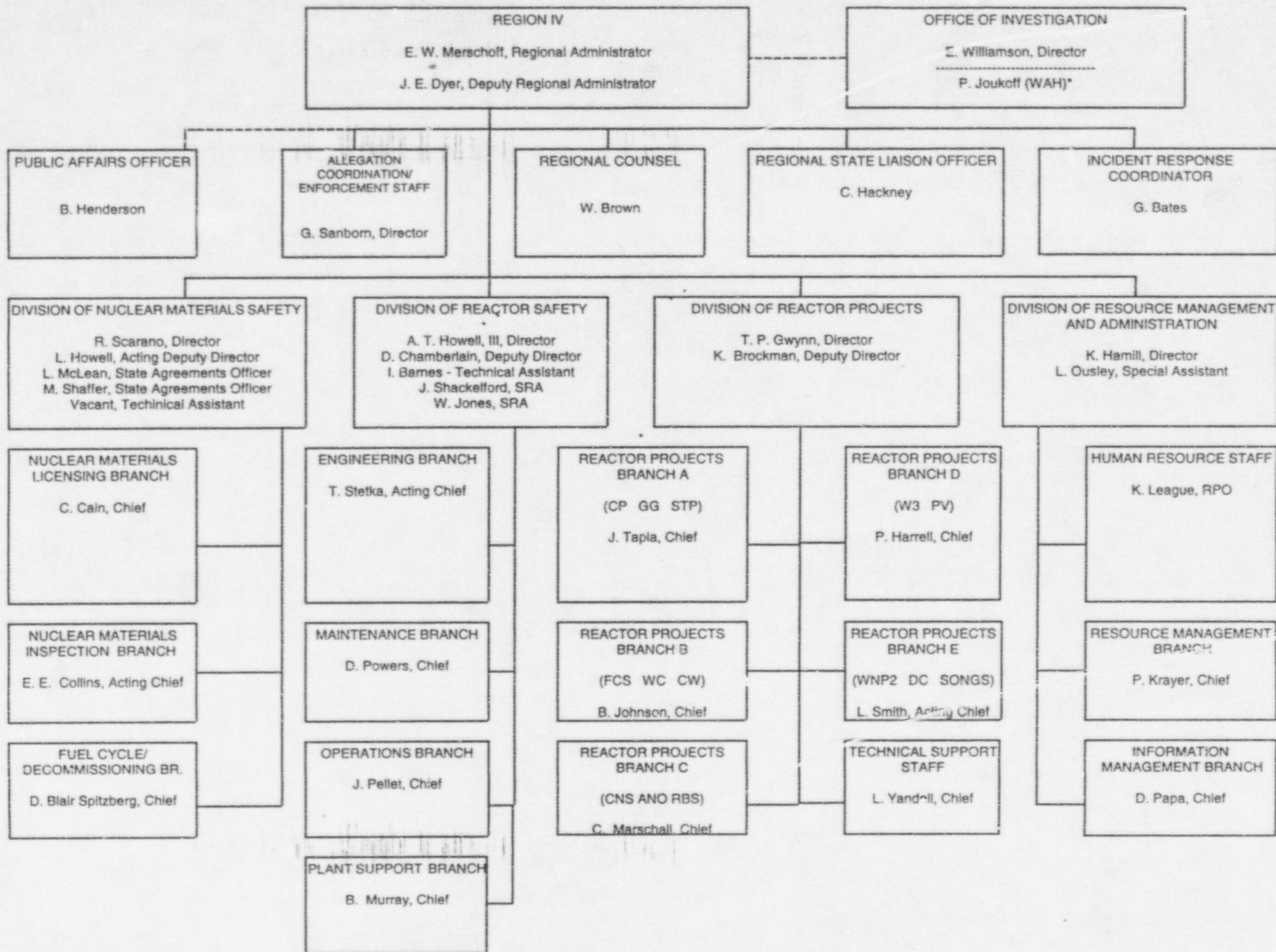
AI 98-215

DOCUMENT NAME: G:\DRPDIR\AI\98-215\WAT

To receive copy of document, indicate in box: "C" = Copy without enclosures "E" = Copy with enclosures "N" = No copy

RIV:D:DRP	<i>[Signature]</i>	DRA		RA	<i>[Signature]</i>				
TPGwynn;df	<i>[Signature]</i>	JEDyer	<i>[Signature]</i>	EWierschoff	<i>[Signature]</i>				
11/6/98		11/6/98		11/6/98					

OFFICIAL RECORD COPY



*WORK AT HOME

NOV - 6 1998

bcc to DCD (IE51)

bcc distrib. by RIV:

Regional Administrator

DRP Director

Branch Chief (DRP/D)

Project Engineer (DRP/D)

Branch Chief (DRP/TSS)

Resident Inspector

DRS-PSB

MIS System

RIV File

RIV Action Item File (98-215)

AI 98-215

DOCUMENT NAME: G:\DRPDIR\AI\98-215\WAT

To receive copy of document, indicate in box: "C" = Copy without enclosures "E" = Copy with enclosures "N" = No copy

RIV:D:DRP	<i>[Signature]</i>	DRA		RA				
TPGwynn;df	<i>[Signature]</i>	JEDyer <i>[Signature]</i>		EWierschoff <i>[Signature]</i>				
11/6/98		11/6/98		11/6/98				

OFFICIAL RECORD COPY