



UNITED STATES
NUCLEAR REGULATORY COMMISSION

REGION IV

611 RYAN PLAZA DRIVE, SUITE 400
ARLINGTON, TEXAS 76011-8064

NOV - 6 1998

Harold B. Ray, Executive Vice President
Southern California Edison Co.
San Onofre Nuclear Generating Station
P.O. Box 128
San Clemente, California 92674-0128

SUBJECT: U.S. NUCLEAR REGULATORY COMMISSION REGION IV
ORGANIZATION CHART

Dear Mr. Ray:

Enclosed you will find a current copy of the Region IV organization chart. Organizational changes were made, particularly in the Division of Reactor Projects, to facilitate the closure of the Region IV Walnut Creek Field Office and the relocation of Project Branch E from Walnut Creek, California, to Arlington, Texas. The closure was completed on September 30, 1998.

Should you have any questions concerning these organizational changes, please contact Mr. Thomas P. Gwynn of my staff at (817) 860-8248.

Sincerely,

Ellis W. Merschhoff
Regional Administrator

Docket Nos.: 50-361
50-362

License Nos.: NPF-10
NPF-15

Enclosure:
Organization Chart

cc w/enclosure:
Chairman, Board of Supervisors
County of San Diego
1600 Pacific Highway, Room 335
San Diego, California 92101

9811130138 981106
PDR ADOCK 05000361
P PDR

Alan R. Watts, Esq.
Woodruff, Spradlin & Smart
701 S. Parker St. Suite 7000
Orange, California 92868-4720

Sherwin Harris, Resource Project Manager
Public Utilities Department
City of Riverside
3900 Main Street
Riverside, California 92522

R. W. Krieger, Vice President
Southern California Edison Company
San Onofre Nuclear Generating Station
P.O. Box 128
San Clemente, California 92674-0128

Stephen A. Woods, Senior Health Physicist
Division of Drinking Water and
Environmental Management
Nuclear Emergency Response Program
California Department of Health Services
P.O. Box 942732, M/S 396
Sacramento, California 94334-7320

Mr. Gary D. Cotton, Sr. Vice President
Energy Supply
San Diego Gas & Electric Company
P. O. Box 1831
San Diego, California 92112-4150

Mr. Steve Hsu
Radiological Health Branch
State Department of Health Services
P.O. Box 942732
Sacramento, California 94234

Mayor
City of San Clemente
100 Avenida Presidio
San Clemente, California 92672

Mr. Truman Burns\Mr. Robert Kinosian
California Public Utilities Commission
505 Van Ness, Rm. 4102
San Francisco, California 94102

NOV - 6 1998

bcc to DCD (IE51)

bcc distrib. by RIV:
 Regional Administrator
 DRP Director
 Branch Chief (DRP/E)
 Senior Project Inspector (DRP/E)
 Branch Chief (DRP/TSS)

Resident Inspector
 DRS-PSB
 MIS System
 RIV File
 RIV Action Item File (98-215)

AI 98-215

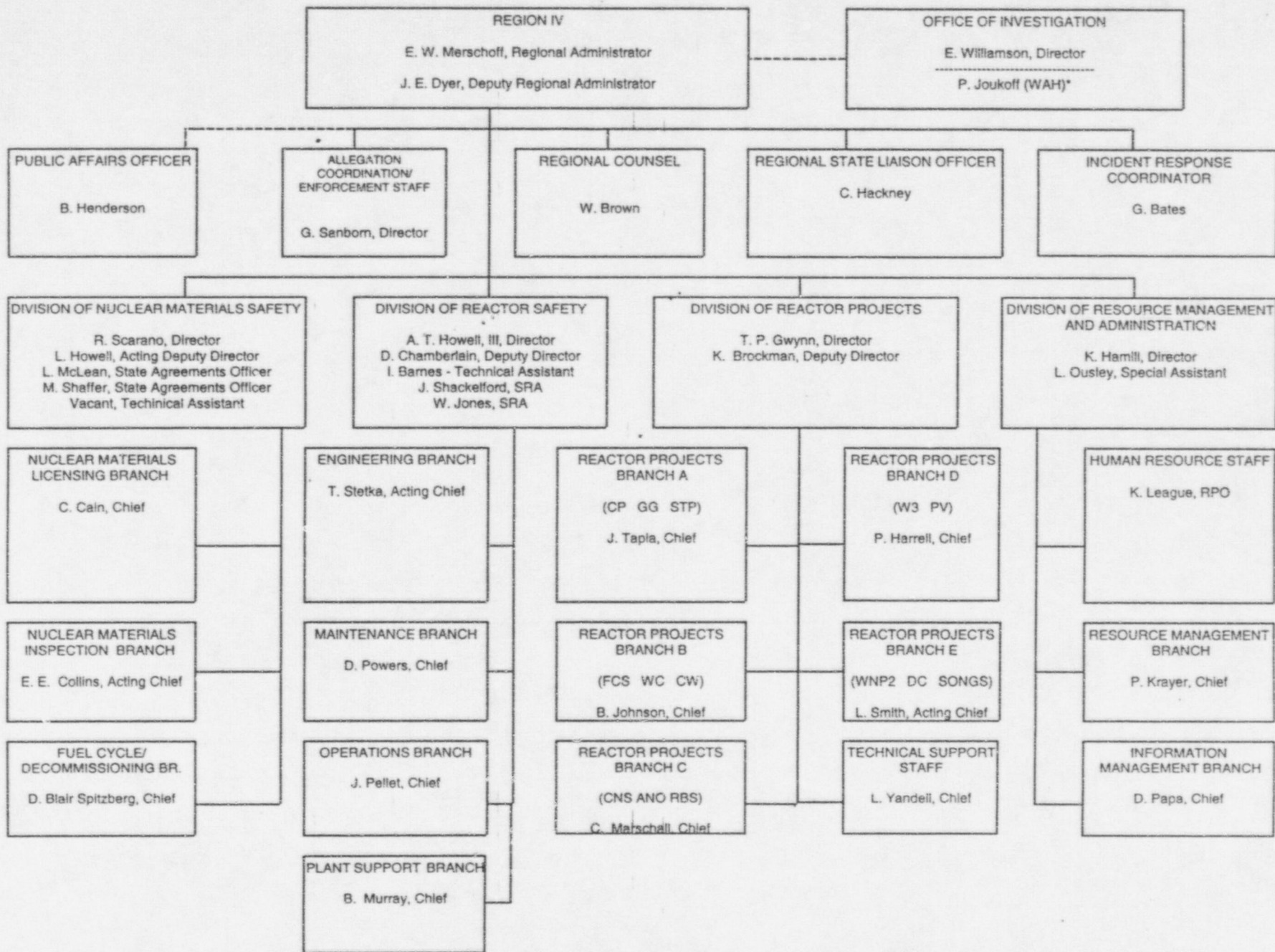
DOCUMENT NAME: G:\DRPDIR\AI\98-215\SO

To receive copy of document, indicate in box: "C" = Copy without enclosures "E" = Copy with enclosures "N" = No copy

RIV:D:DRP	DRA	RA					
TPGwynn;df	JEDyer	EAMerschhoff					
11/6/98	11/6/98	11/6/98					

OFFICIAL RECORD COPY

130020



*WORK AT HOME

NOV - 6 1998

bcc to DCD (IE51)

bcc distrib. by RIV:
 Regional Administrator
 DRP Director
 Branch Chief (DRP/E)
 Senior Project Inspector (DRP/E)
 Branch Chief (DRP/TSS)

Resident Inspector
 DRS-PSB
 MIS System
 RIV File
 RIV Action Item File (98-215)

AI 98-215

DOCUMENT NAME: G:\DRPDIR\AI\98-215\SO

To receive copy of document, indicate in box: "C" = Copy without enclosures "E" = Copy with enclosures "N" = No copy

RIV:D:DRP	DRA	RA						
TPGwynn;df	JEDyer	EW Merschhoff						
11/6/98	11/6/98	11/6/98						

OFFICIAL RECORD COPY