

Dave Morey
Vice President
Farley Project

Southern Nuclear
Operating Company
P.O. Box 1295
Birmingham, Alabama 35201
Tel 205.992.5131

October 6, 1998



Docket No.: 50-348

U. S. Nuclear Regulatory Commission
ATTN.: Document Control Desk
Washington, DC 20555

Joseph M. Farley Nuclear Plant - Unit 1
Eddy Current Test Data
1B Steam Generator Tube R25C51

Ladies and Gentlemen:

As requested via telephone by NRC staff on September 10, 1998, the enclosed optical disc contains eddy current test data for 1B steam generator (SG) tube R25C51. It is the Southern Nuclear Operating Company (SNC) opinion that proper interpretation of the test data requires an understanding of the Farley-specific SG eddy current program. Therefore, SNC offers to provide personnel to assist NRC staff with the test data.

The content of the optical disc is listed below.

Reel 36	1997 14th Refueling	.720" bobbin coil data for tube R25C51 Tube-End Cold (TEC) to Sleeve Top Hot Leg Tubesheet (STH)
Reel 2	1998 Leakage Shutdown	.720" bobbin coil data for tube R25C51 TEC to STH
Reel 7	1998 Leakage Shutdown	.620" + Point data for tube R25C51 STH -1.50" to 31.00" above STH

Each data reel has a minimum of three calibration runs associated with the examination.

If you have any questions, please advise.

Respectfully submitted,

DM
Dave Morey

EWC:maf sgeddy.doc
Enclosure

cc: Mr. L. A. Reyes, Region II Administrator
Mr. J. I. Zimmerman, NRR Project Manager
Mr. T. P. Johnson, FNP Senior Resident Inspector

ADD'l.

9810090379 981006
PDR ADOCK 05000348
P PDR

Table 1

J. M. Farley Unit #1
S/G B
R25C51

720 BOBBIN 1997		
VOLTS	PERCENT	LOCATION
0.36	12%	STH+5.59
0.23	80%	STH+6.55
0.96	94%	STH+7.05
0.42	89%	STH+13.73

STH – SLEEVE TOP HOT LEG

File Analysis System Tools Layout Add Displays Help

Tube Comment: N30

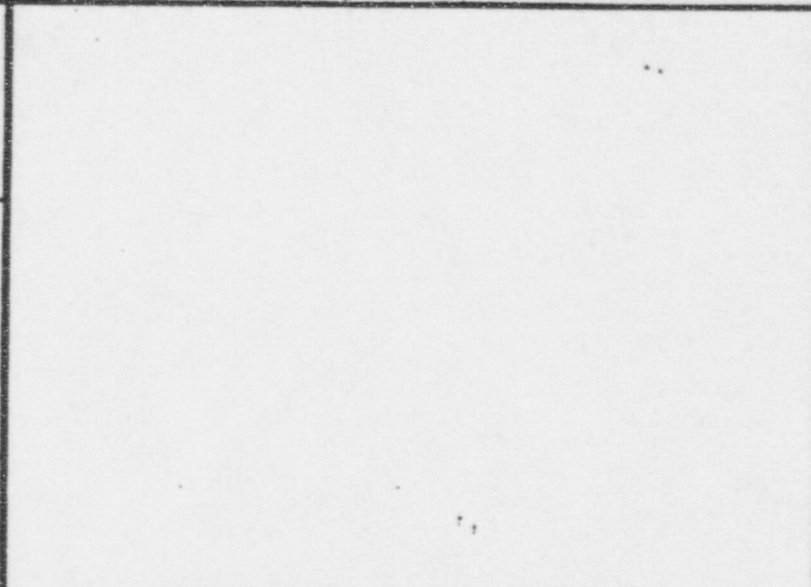
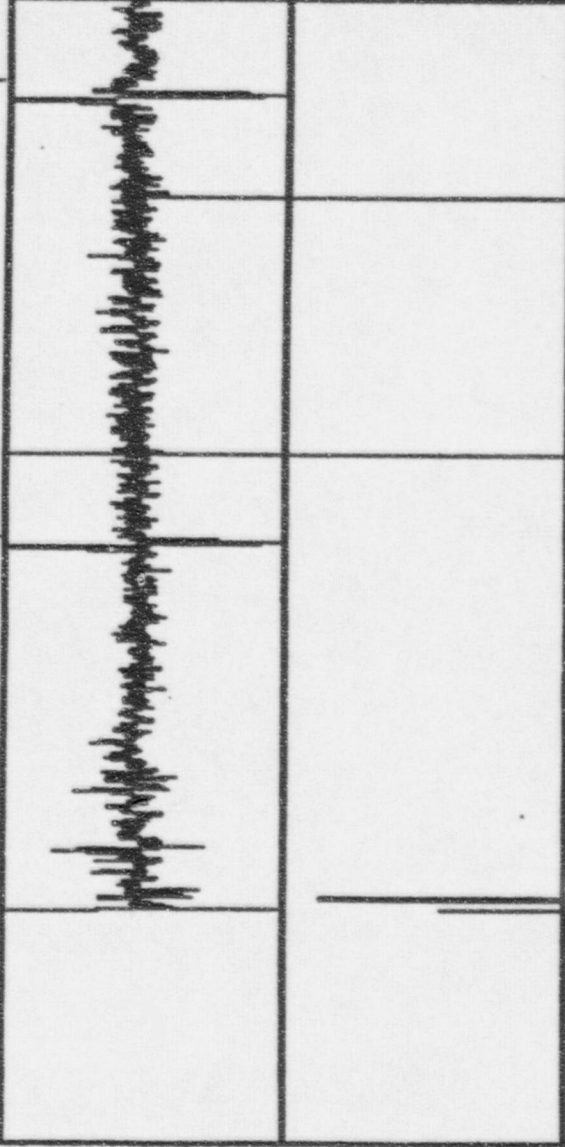
SGB_LOCAL00036 SAT 5:48:17 MAR-29-97 SGB_ROW 25 COL 51 N34

<Lmrks>	P1	400		1	400		1:	400	G0	C1	
	G0	C1	Vert	G0	C1	Horz	0.11 v/d	span 2		rot 210	

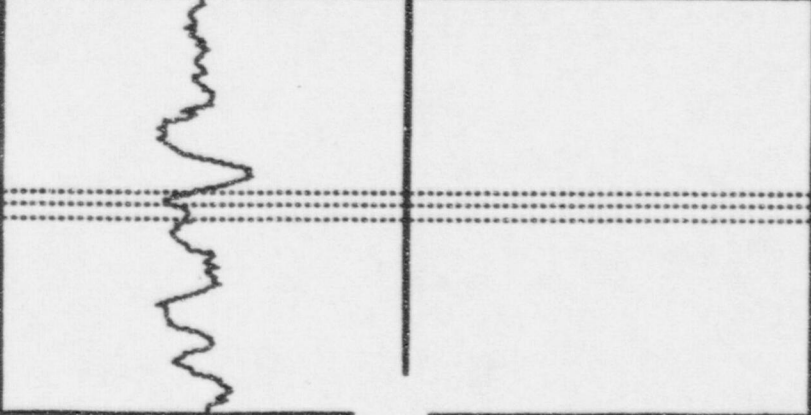
02H

01H

STH

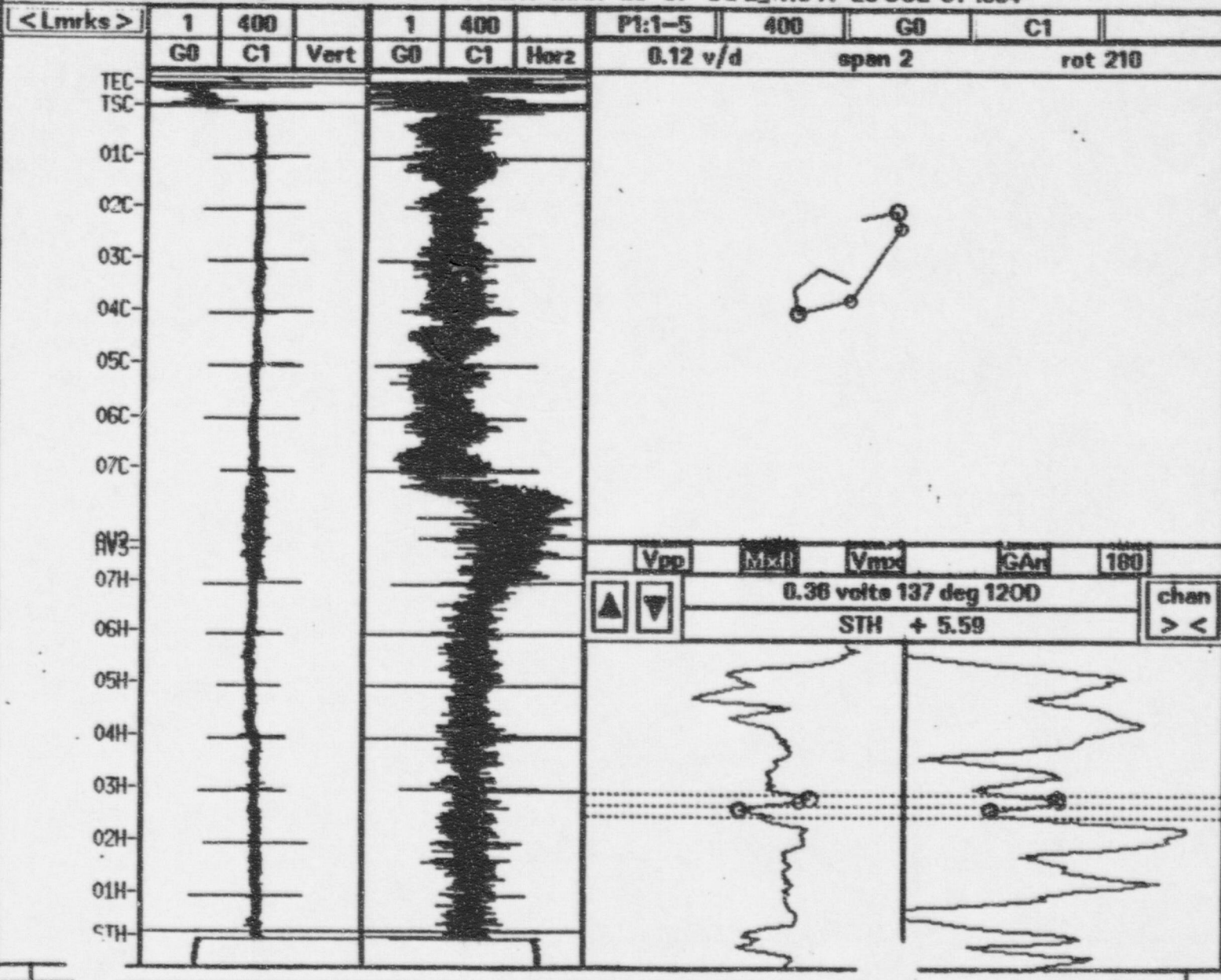


Vpp	MxR	Vmx	GAn	180
▲	▼	01H + 10.13		chan



Tube Comment: NDD

SGB_LOCAL00036 SAT 5:48:17 MAR-29-97 SGB_HOW 25 COL 51 N034

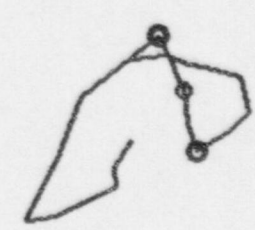
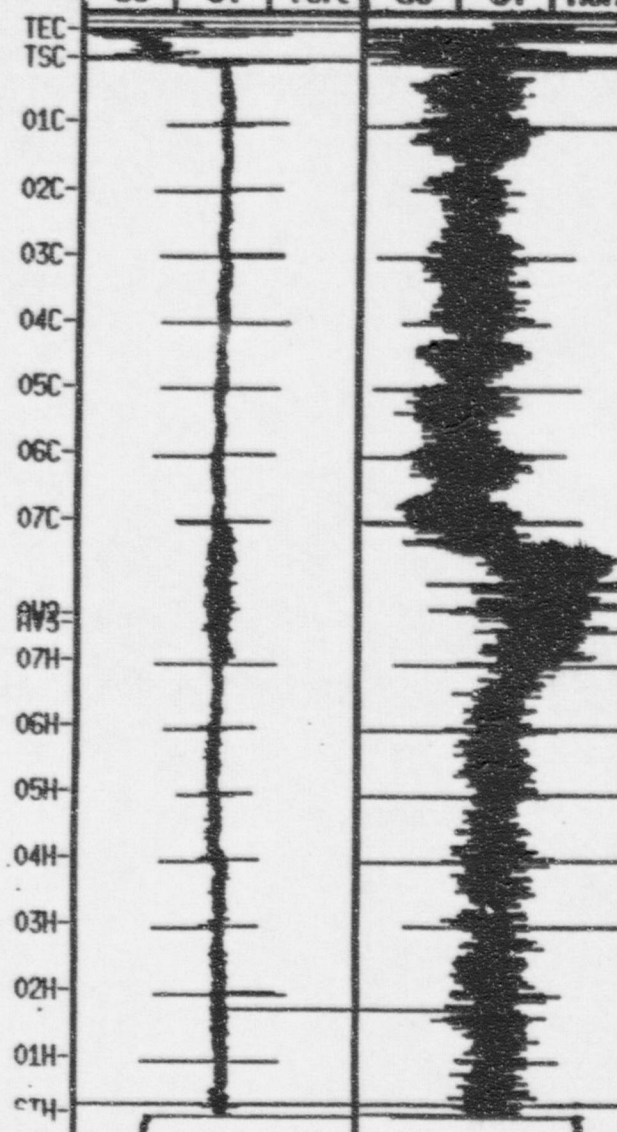


File Analysis System Tools Layout Add Displays Help

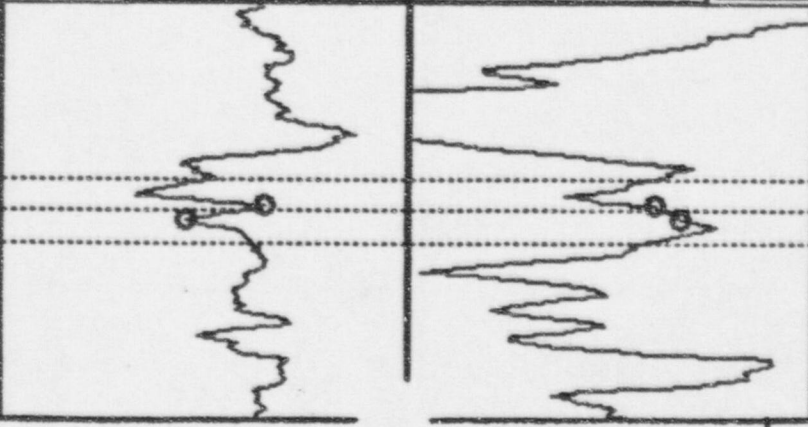
Tube Comment: NDD

SGB_OCAL00036 SAT 5:48:17 MAR-29-97 SGB_ROW 25 COL 51 1034

<Lmrks>	1	400		1	400		P1:1-5	400	G0	C1	
	G0	C1	Vert	G0	C1	Horz	0.11 v/d	span 2			rot 210



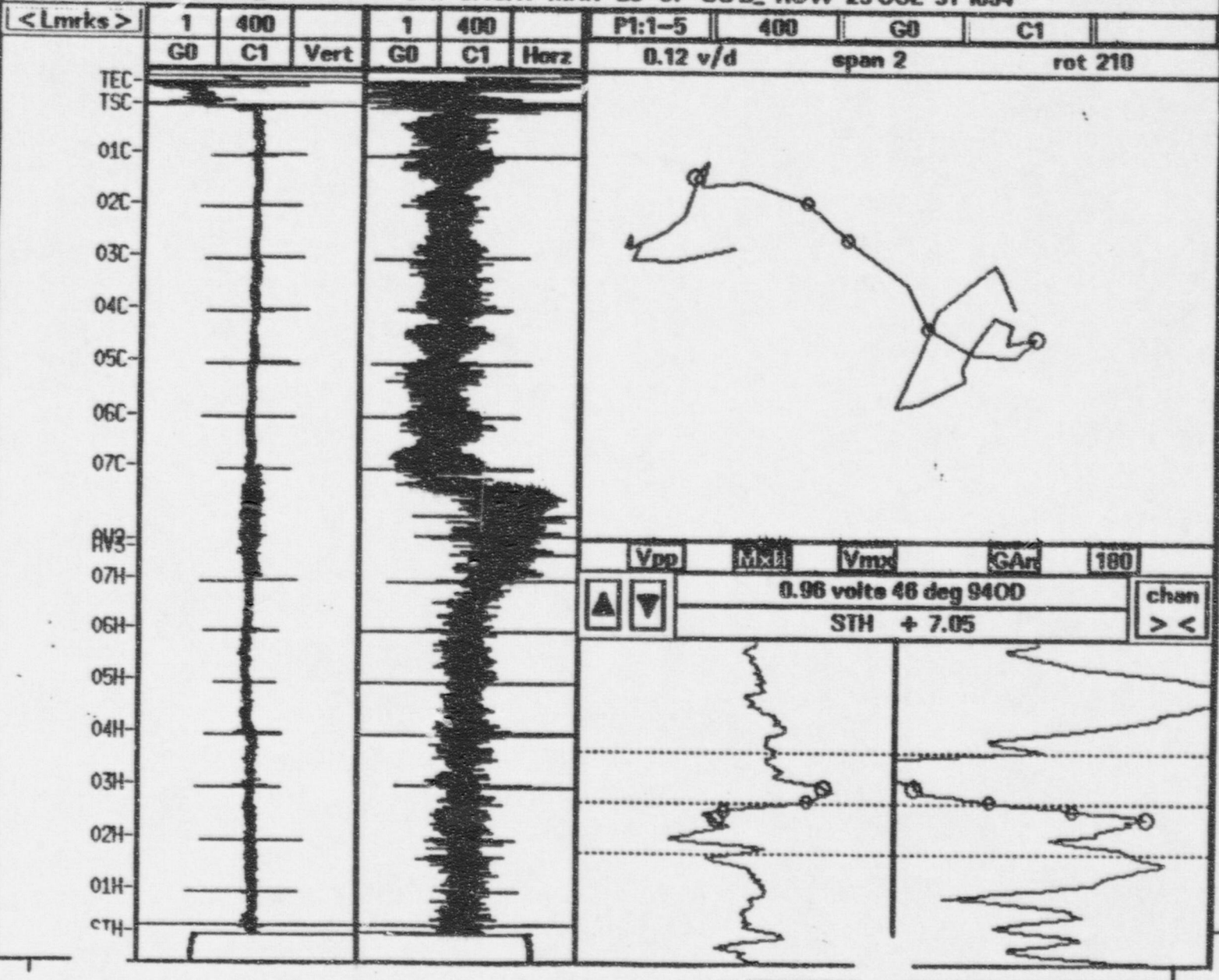
VDP	MxR	Vmx	GAn	180
▲	▼	0.23 volts 71 deg 8000		chan
STH + 0.55				> <



File Analysis System Tools Layout Add Displays Help

Tube Comment: NDD

SGB_OCAL00036 SAT 5:48:17 MAR-29-97 SGB_ROW 25 COL 51 I034

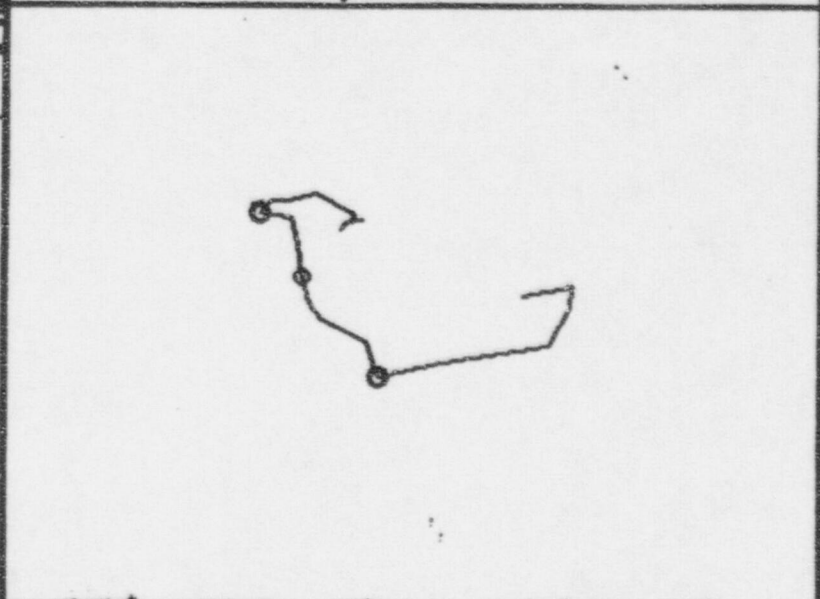
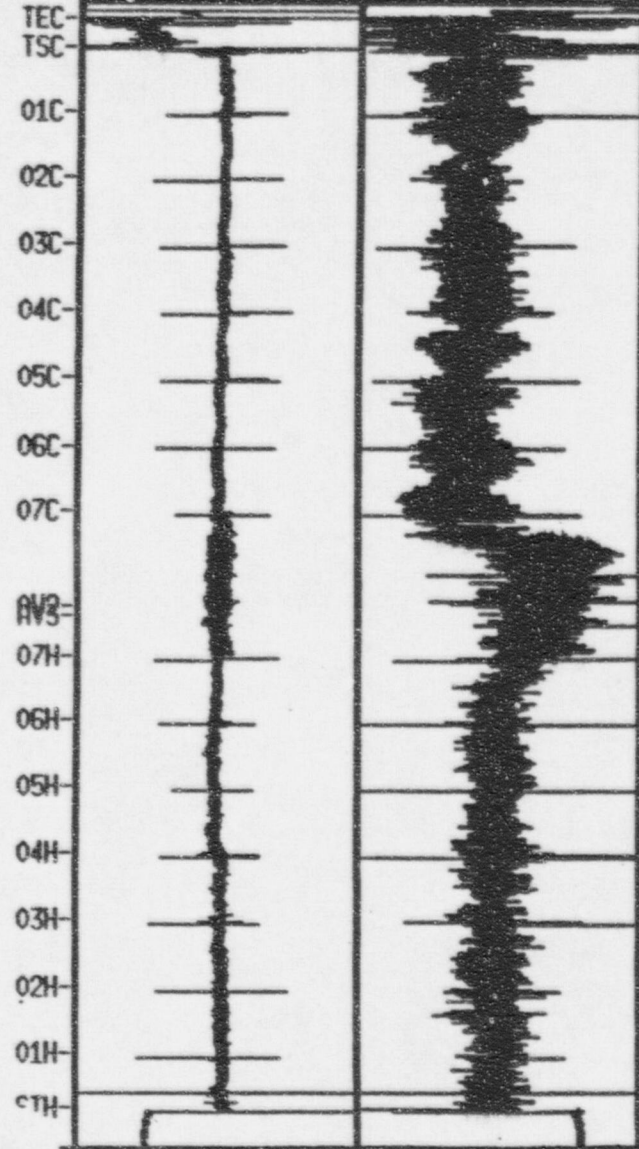


File Analysis System Tools Layout Add Displays Help

Tube Comment: N00

SGB_OCAL00036 SAT 5:48:17 MAR-29-97 SGB_ROW 25 COL 51 I034

<Lnorks>	1	400		1	400		P1:1-5	400	G0	C1	
	G0	C1	Vert	G0	C1	Horz	0.12 v/d	span 2			rot 210



Vpp Mxfl Vmxx GAn 180
 0.42 volts 55 deg 890D
 STH +13.73
 chan ><

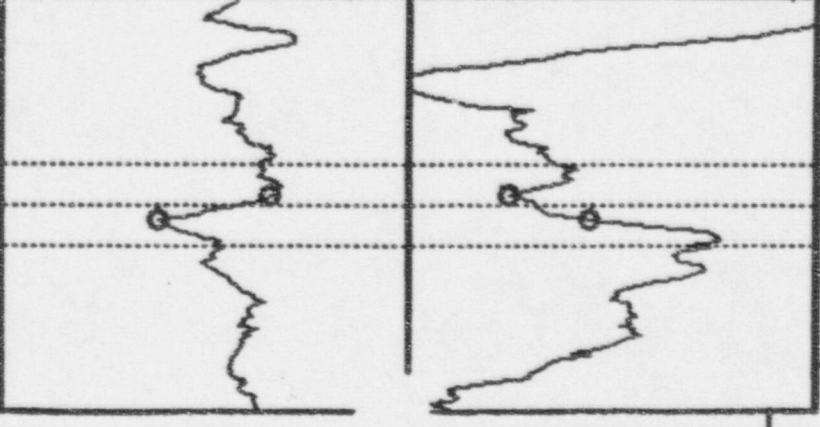


Table 2

J. M. Farley Unit #1
S/G B
R25C51

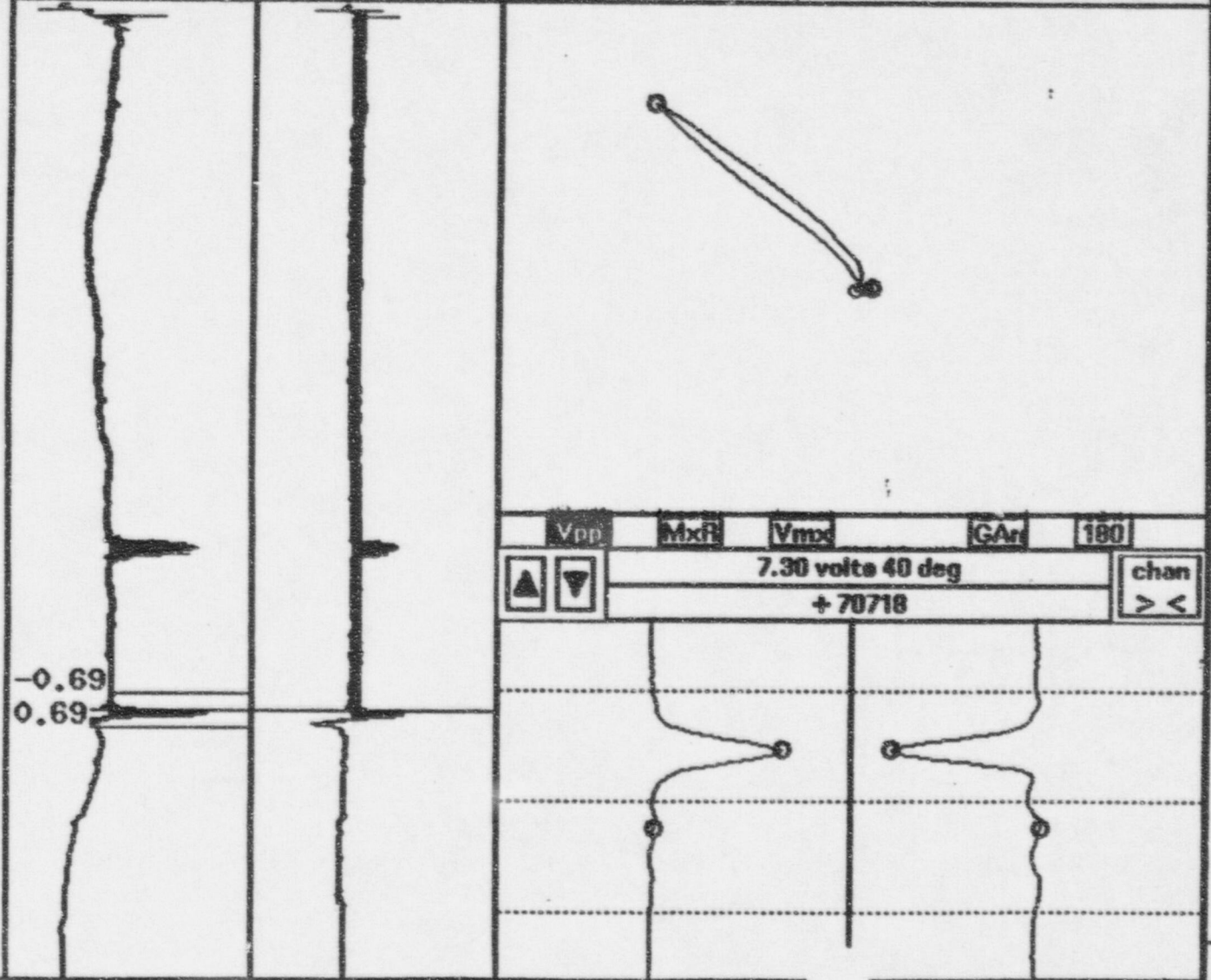
720 BOBBIN 1998			620 +POINT 1998	
VOLTS	PERCENT	LOCATION	LOCATION	VOLTS
N/A	N/A	N/A	STH+0.00	7.30
0.41	0	STH+1.35	STH+1.14	0.22
0.44	95%	STH+5.46	STH+4.16	0.34
0.28	35%	STH+6.86	STH+5.80	0.32
11.02	93%	STH+8.30	STH+7.54	6.60
0.12	63%	STH+10.77	NDD	NDD
0.43	71%	STH+14.11	STH+13.85	0.35
0.47	19%	STH+15.08	STH+14.77	0.33
0.16	41%	STH+15.40	STH+15.08	0.33
0.31	74%	STH+15.81	STH+15.45	0.35
0.15	72%	STH+19.21	STH+18.50	0.21
0.27	83%	STH+27.55	STH+26.72	0.47
0.29	60%	STH+39.05	Not Tested	Not Tested

STH - SLEEVE TOP HOT LEG

Tube Comment: N00

SGB_ICAL00007 SAT 23:23:57 MAY-09-98 SGB_ROW 25 COL 51 N004

< Lmrks >	1	300		b	75		1:	300	G0	C1	
	G0	C1	Vert	G0	C1	Vert	1.30 v/d	span 86		rot 354	



Vpp MxR Vmxc GAr 180

7.30 volts 40 deg

+70718

chan > <

Sleeve Top

RPC: SGBLICAL00007 SAT 22:22:57 MAY-08-08 SGBL R 25 C 51 B004 [MB]

Filter:OFF P1a/Scan=113 XTrans=0 YTrans=0 XRot=61 ZRot=117

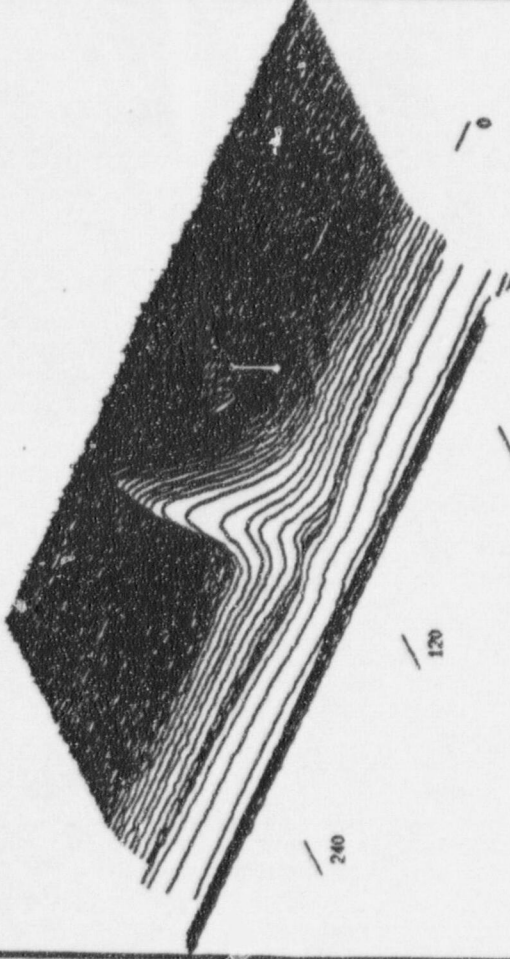
Message

SHOW HIDDEN OFF

HIGHLIGHT OFF

HEBZ PLOT OFF

< OWN >	1: 300 CO CL
ESDIN (PLOT)	180 PLOT
OWN (+/-)	USER SELECT
SDIN (+/-)	SDIN +/-052
KSUBLE = 2.0	KSUBLE = 2.1
SDIMS = 77	T-07ST = 87
SPIN = 66	R-SLEN ON
CIRC FROM	CIRC TO
ARCIAL FROM	ARCIAL TO



66.9

CIRC NO HERS

ARCIAL NO HERS

+ 20718

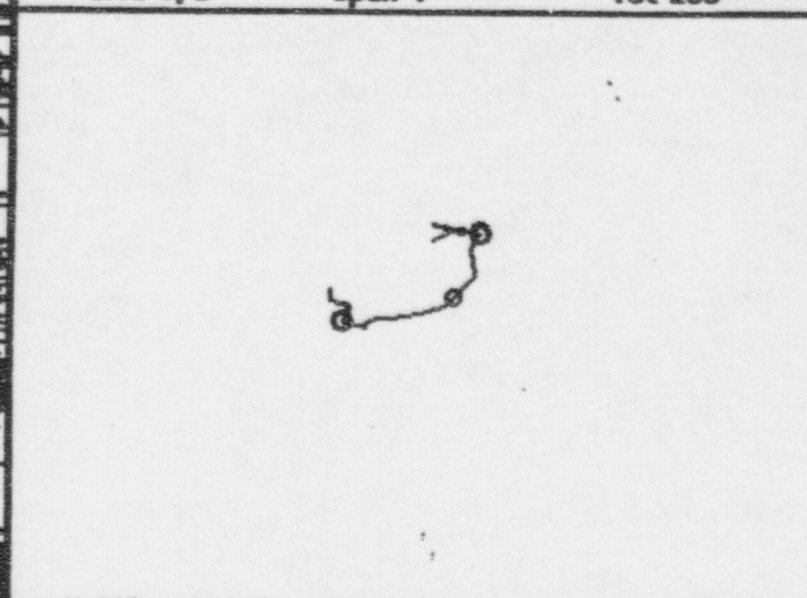
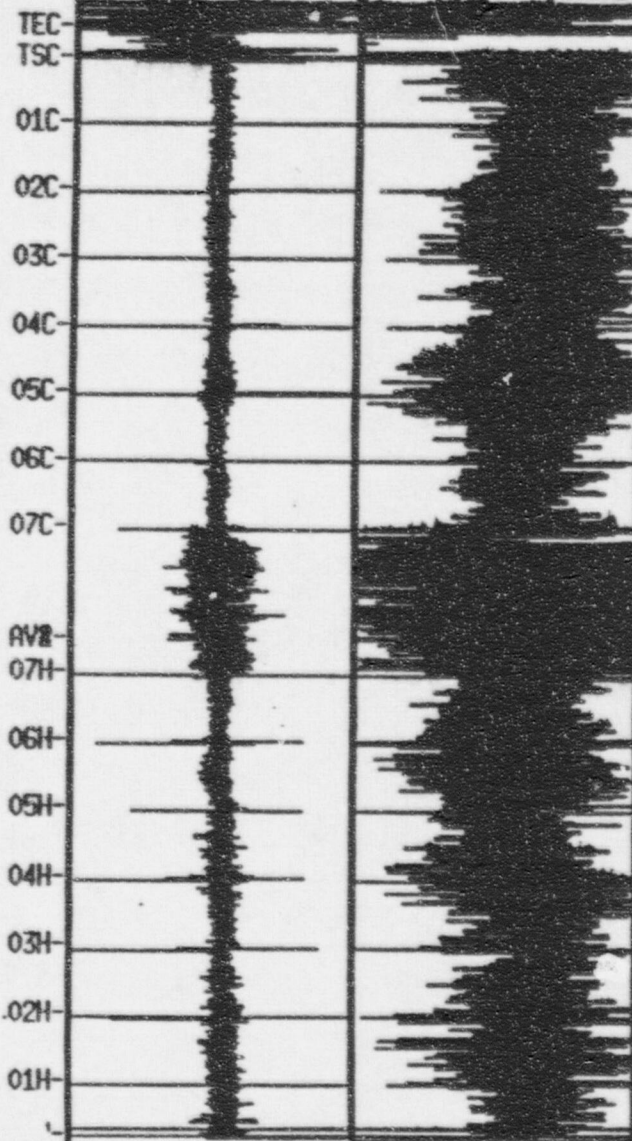


File Analysis System Tools Layout Add Displays Help

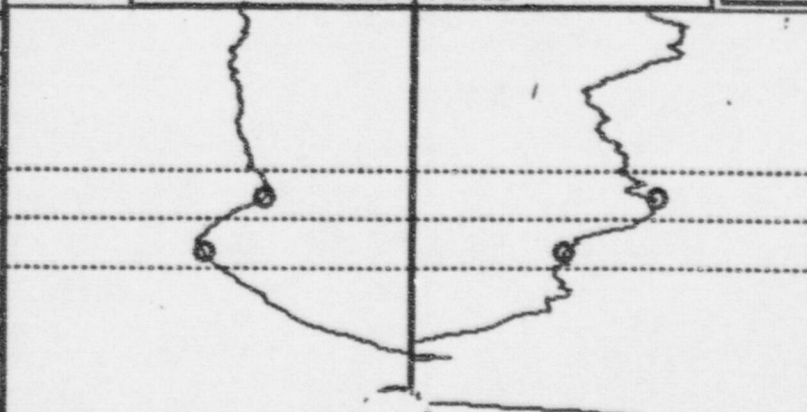
Tube Comment: NDD

SGB_OCAL00002 SAT 20:58:55 AUG-22-98 SGB_ROW 25 COL 51 R005

<Lmrks>	1	400		1	400		P1:1-5	400	G0	C1	
	G0	C1	Vert	G0	C1	Horz	0.15 v/d	span 4		rot 233	



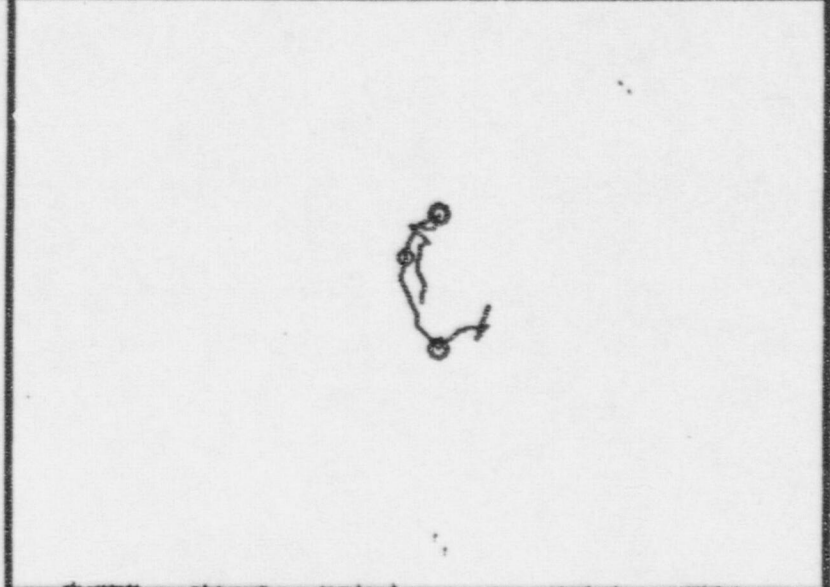
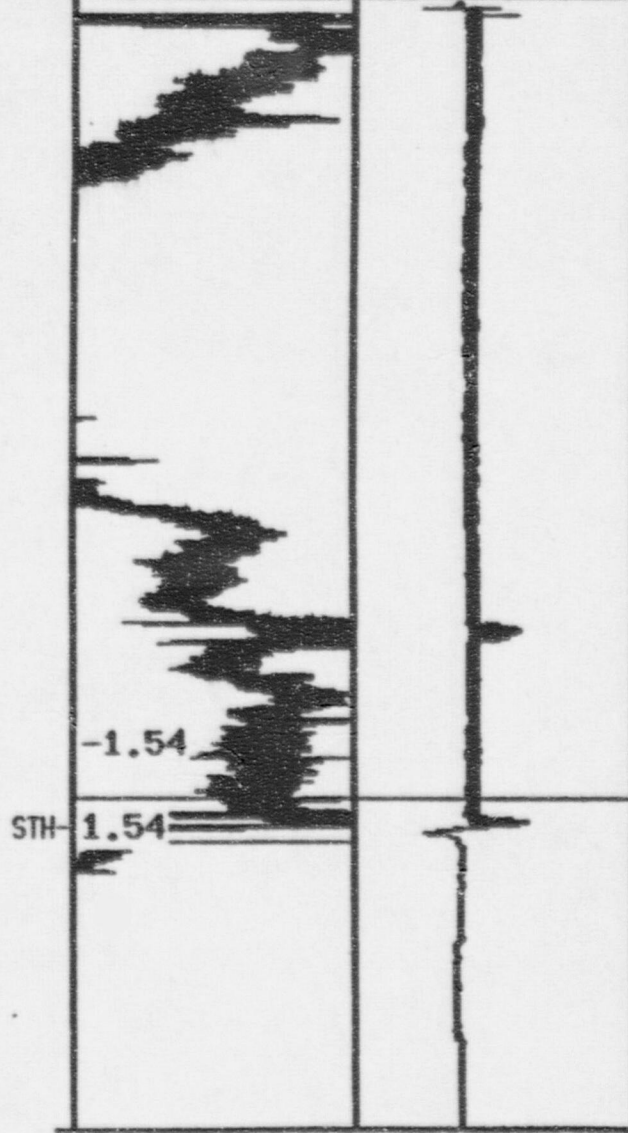
Vpp	MxR	Vmx	GAr	180
0.41 volte 149 deg 000				chan
STH + 1.35				><



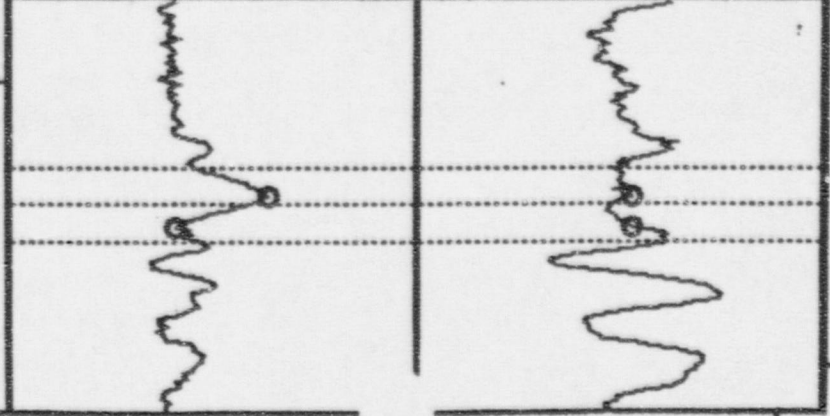
Tube Comment: NDD

SGB_ICAL00007 SAT 23:23:57 MAY-09-98 SGB_ROW CCL 51 1004

<Lnks>	1	300		5	75		1:	300	G0	C1	
	G0	C1	Vert	G0	C1	Vert	0.10 v/d	span 6	rot 354		



Vpp	MxFt	Vmx	GArc	180
▲ ▼	0.22 volts 91 deg			chan
	STH + 1.14			> <



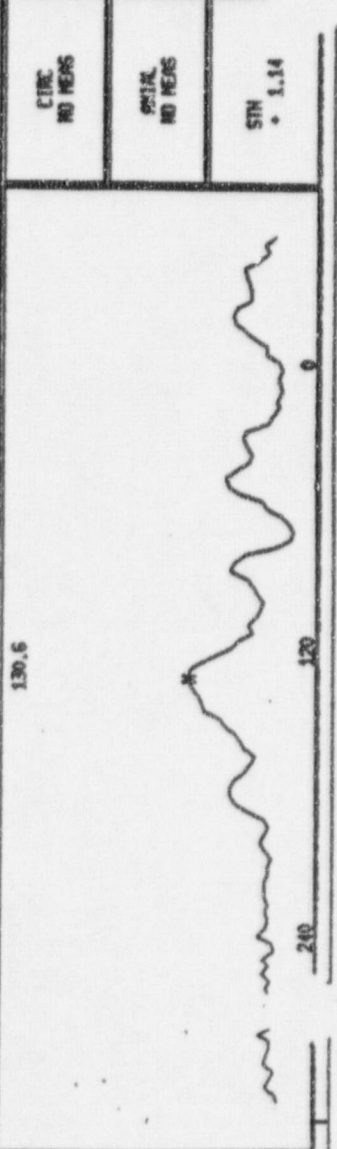
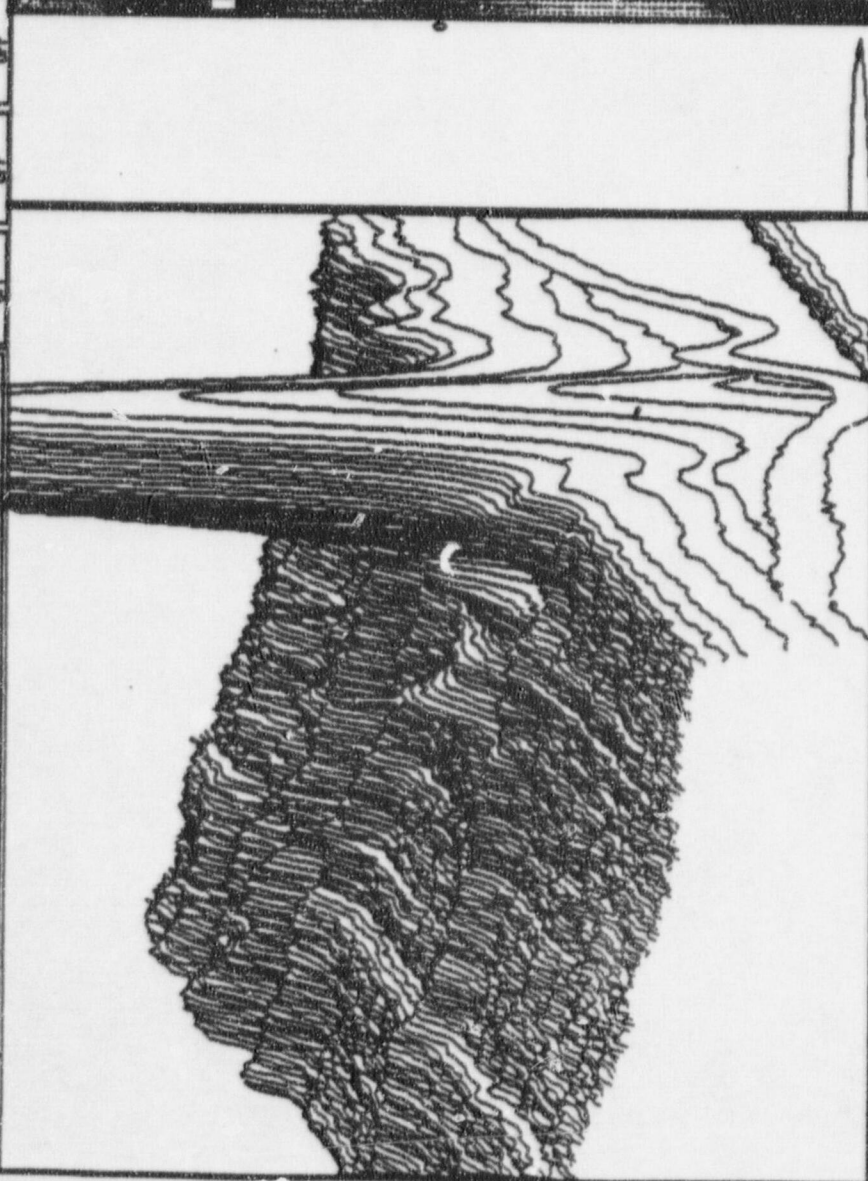
Filter: OFF Pts/Scan=113 XTrans=0 YTrans=0 Mod=61 ZMod=

199 SOB L R 25 C 91 0004 [MS]

< CMM >
1: 300 GO CI

CSCAN (PLOT)	180 PLOT
CMM (+/-)	USER SELECT
SCAN (+/-)	SCAN +/- 0.5%
VECALE = 2.0	VECALE = 2.1
SCWB = 1.69	T-OFFST = 97
SPWH = 6	R-SLEN ON
CIRC FROM	CIRC TO
ARCIAL FROM	ARCIAL TO

SHEN HISEN OFF
 HCHISY OFF
 HENZ PLOT OFF

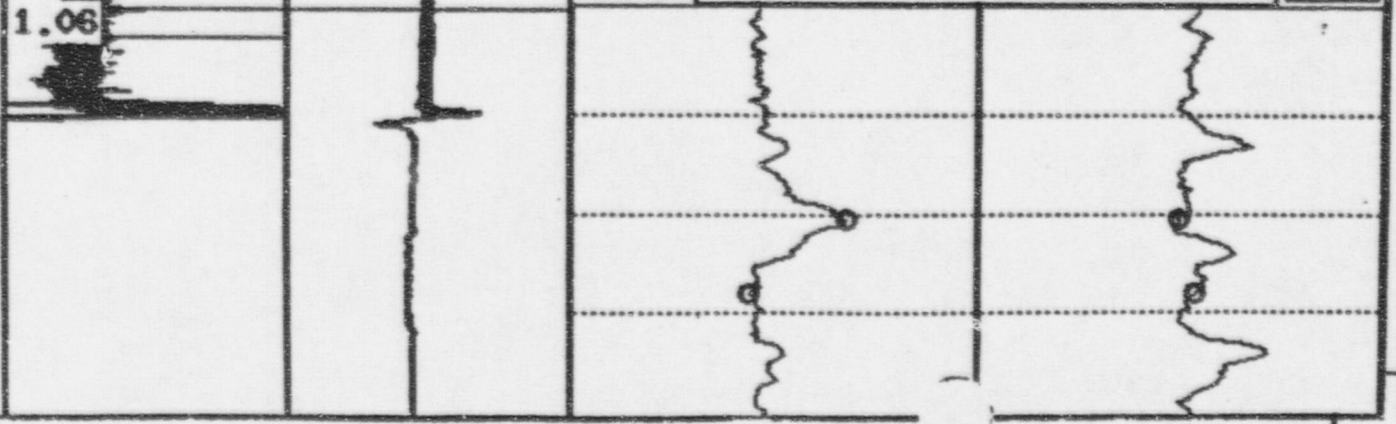
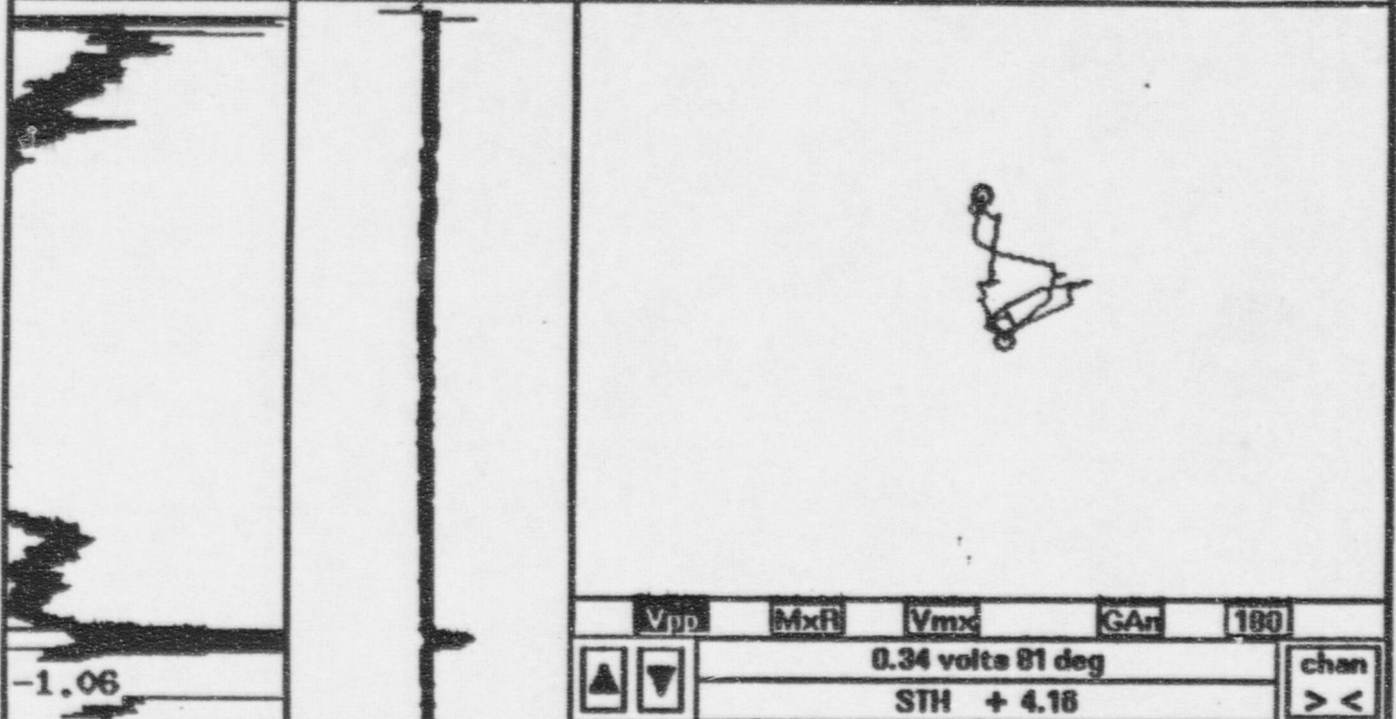


Message

Tube Comment: NDD

SGB_ICAL00007 SAT 23:23:57 MAY-09-98 SGB_ROW 25 COL 51 N004

<Lmrks>	1	300		5	75		1:	300	G0	C1	
	G0	C1	Vert	G0	C1	Vert	0.14 v/d	span 9		rot 354	

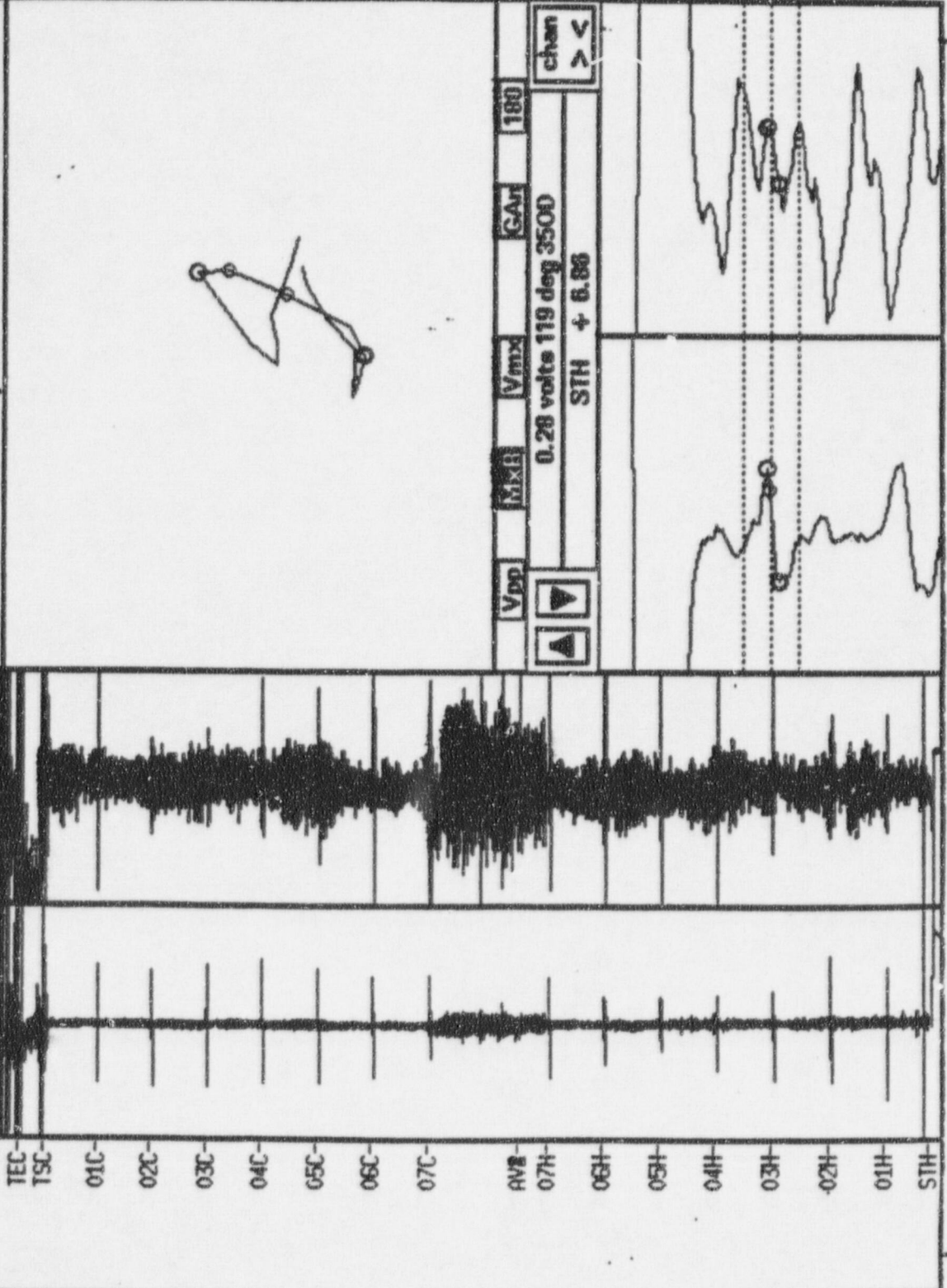


Tube Comment:

MDD

SGB_OCAL00002 SAT 20:58:55 AUG-22-98 SGB_ROW 25 COL 51 R005

< Lmrks >	1	400	G0	C1	Horz	P1:1-5	400	G0	C1	rot 233
			Vert			0.07 v/d		span 2		



Vpp Mix Vmax GAr 180

0.28 volts 119 deg 3500

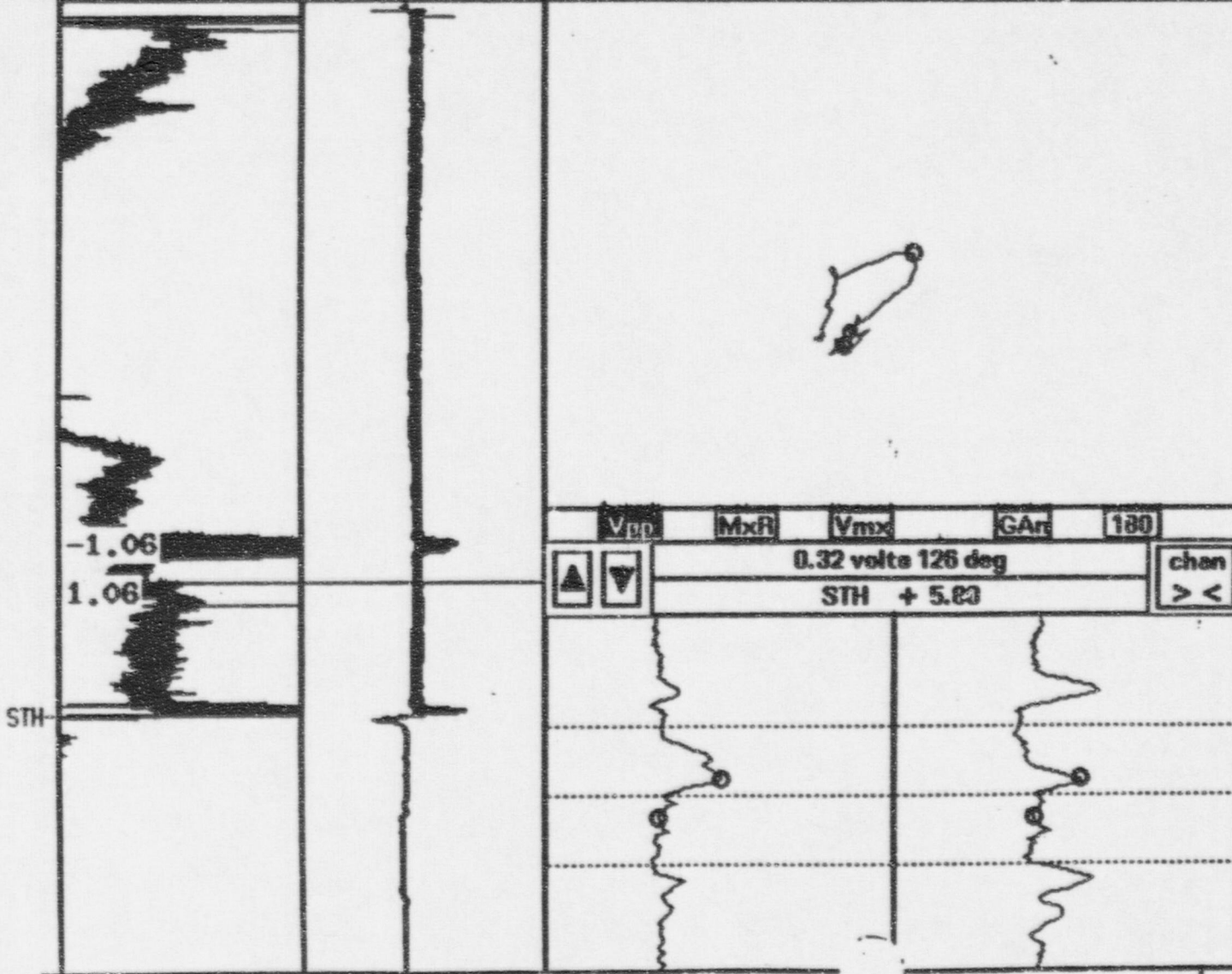
STH + 6.86

chan

Tube Comment: NCO

SGB_ICAL00007 SAT 23:23:57 MAY-09-98 SGB_ROW 25 COL 51 1004

< Lmrks >	1	300		5	75		1:	300	G0	C1	
	G0	C1	Vert	G0	C1	Vert	0.14 v/d	span 9			rot 354



RPC: SCB L:AL00007 SAT 22-22-57 A

8-88 SG B. R 25 C 51 8804 [MB]

Filter:OFF Pts/Scan=113 XTran=0 YTran=0 Rot=61 Zrot=34

Message

SHOW HIDDEN

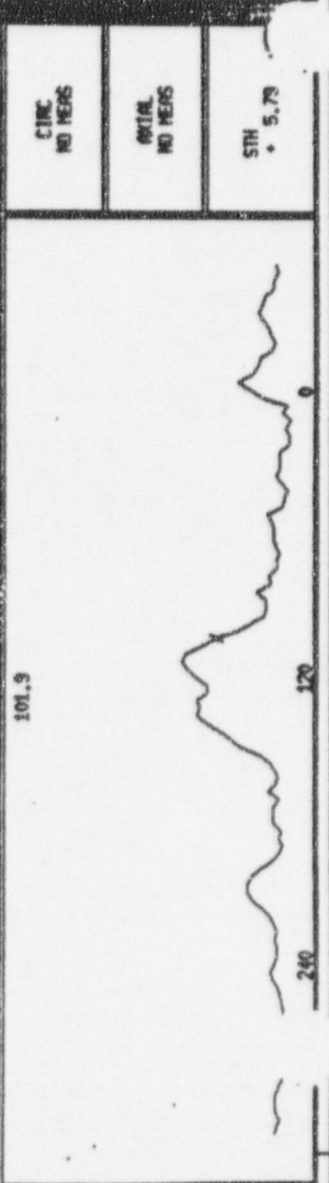
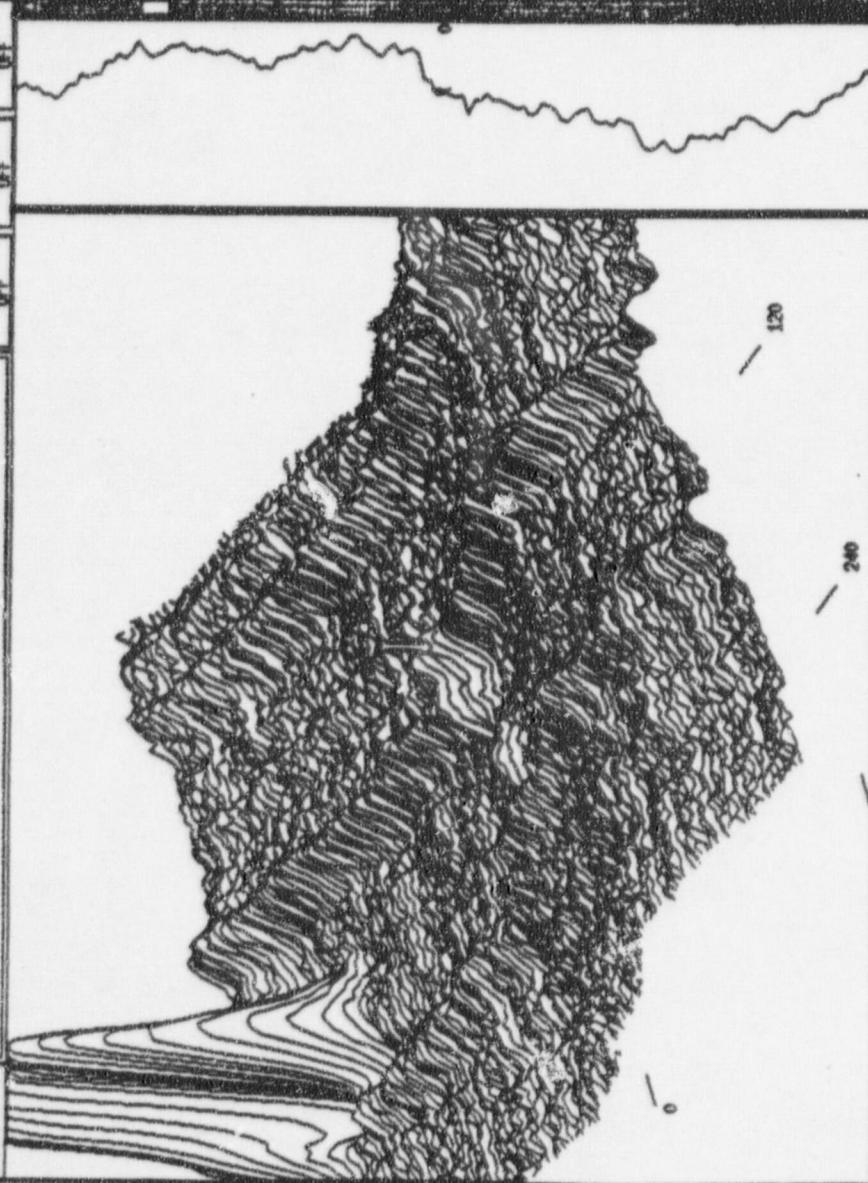
VERIFY

HORIZ PLOT

1: 300 CO CI

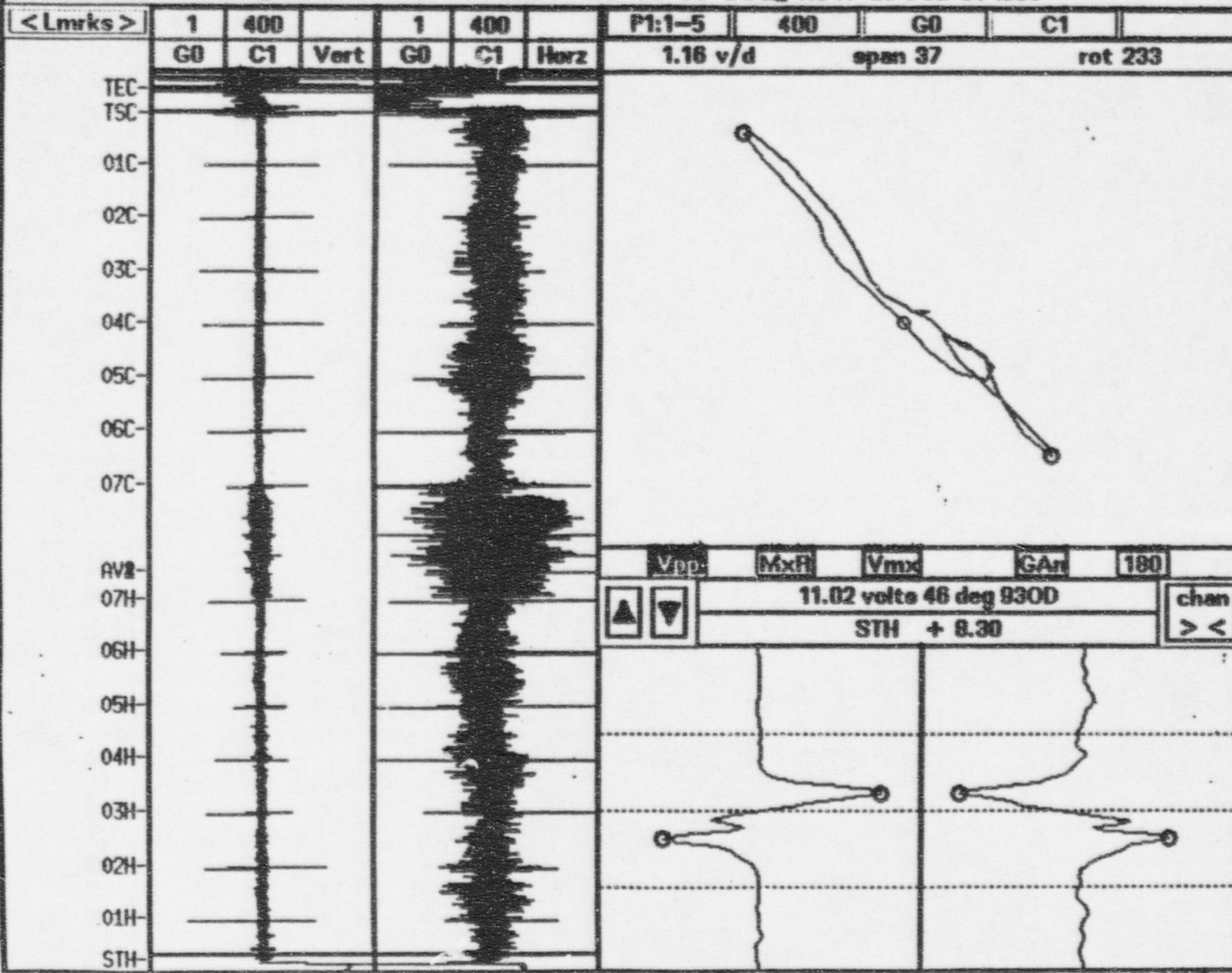
< ONR >

CSDW (PLOT)	180 PLOT
ONR (+/-)	USER SELECT
SCAN (+/-)	SCAN +/- 65Z
XSCALE = 2.0	YSCALE = 2.1
SDMS = 1.55	T-OFST = 57
SPW = 6	R-SELM ON
CIRC FROM	CIRC TO
ARCIAL FROM	ARCIAL TO



Tube Comment: NDD

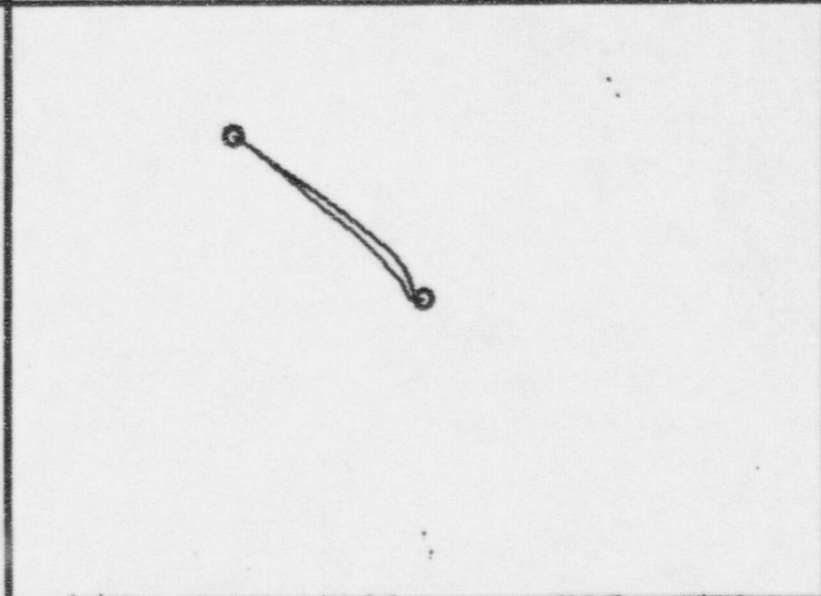
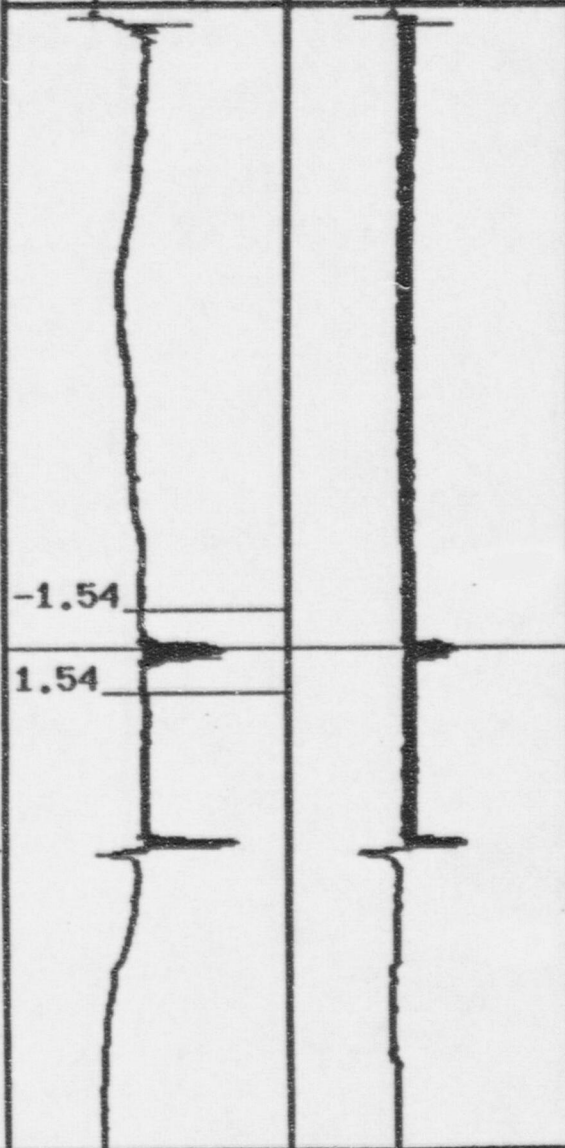
SGB_OCAL00002 SAT 20:58:55 AUG-22-98 SGB ROW 25 COL 51 ID05



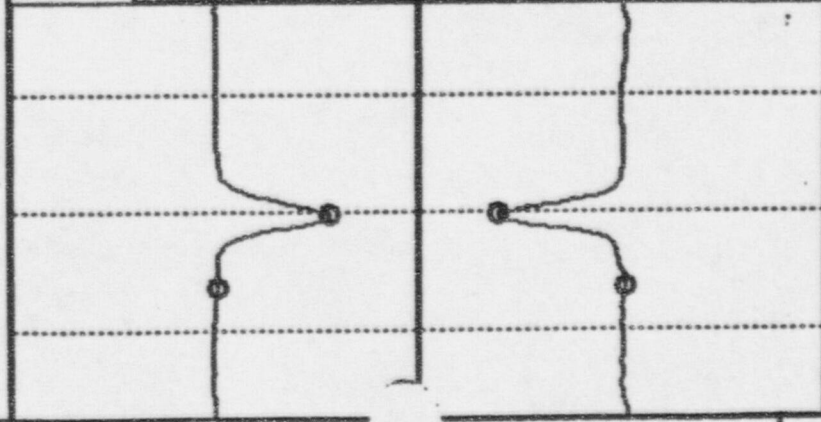
Tube Comment: NDD

SGB_ICAL00007 SAT 23:23:57 MAY-09-98 SGB_ROW 25 COL 51 1004

<Lmrks>	1	300		5	75		1:	300	G0	C1	
	G0	C1	Vert	G0	C1	Vert	1.57 v/d	span 103	rot 354		



Vpp	MxR	Vmx	GA	180
6.60 volts 41 deg				chan
STH + 7.54				> <



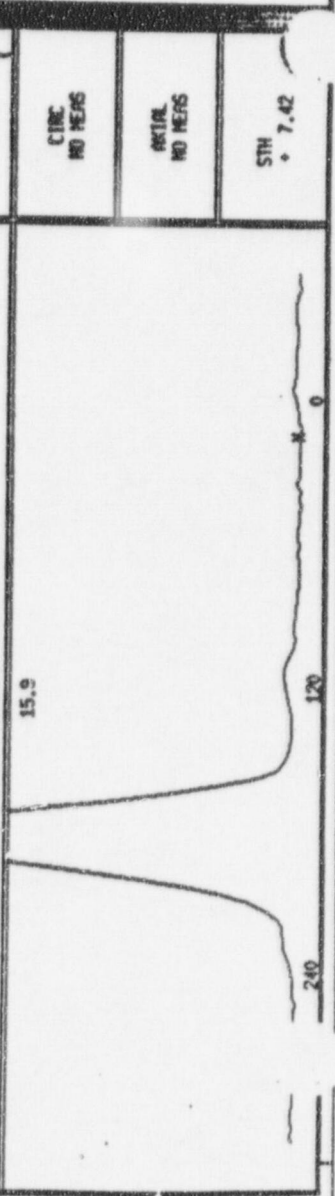
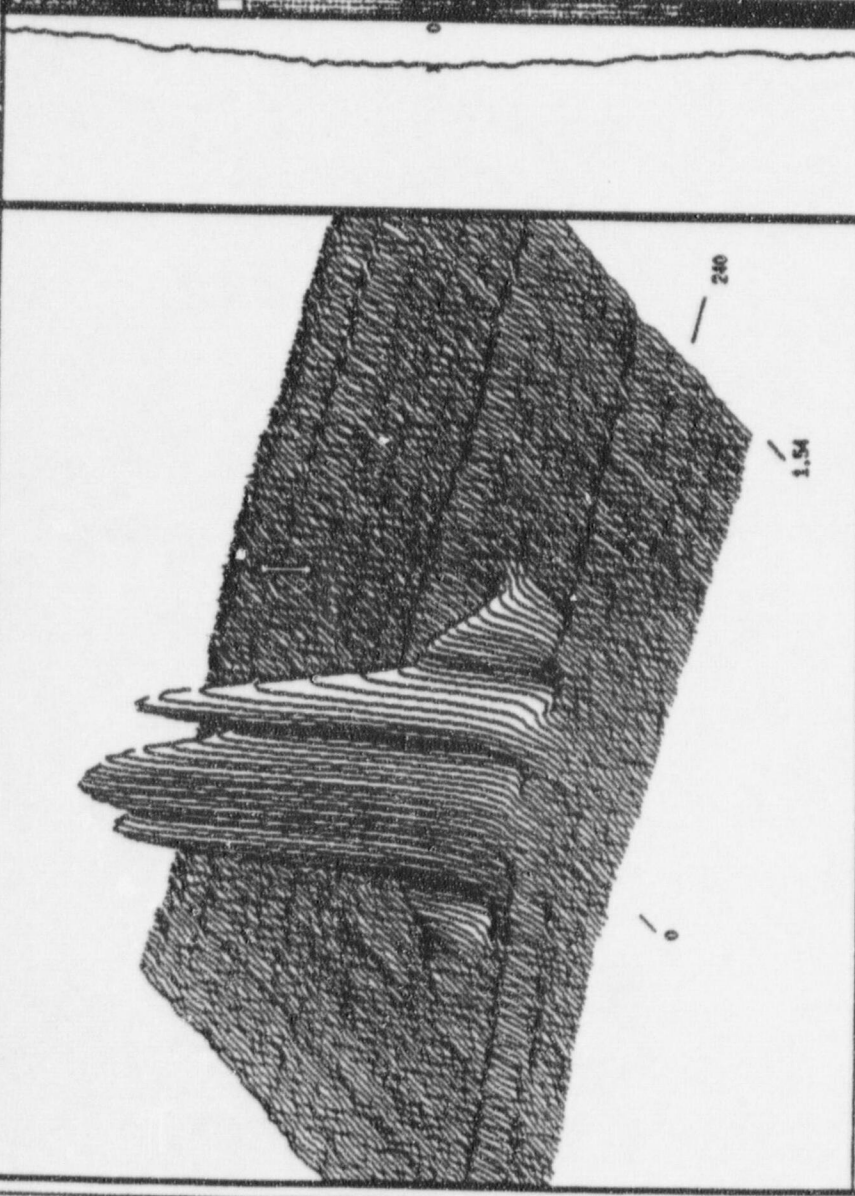
RPC: SGBLICAL00007 SAT 23-23-57
Filter: OFF Pts/Scan=113 XTrans=0 YTrans=0 XRot=61 ZRot=62

AP-88 SGBL R 25 C 51 8004 [MB]

Message

SPIN HIRREN OFF
INCRIFY OFF
HEQZ PLOT OFF

< CHAN > 1: 300 GO CI	100 PLOT
CSOIN (PLOT)	USER SELECT
CHAN (+/-)	SCHN +/- 052
SCHN (+/-)	YSOALE = 2.1
YSOALE = 2.0	T-OFST = 57
SCHNS = 168	R-LEN ON
SCHN = 25	CIRC TO
CIRC FROM	RETRN TO
RETRN P/A	



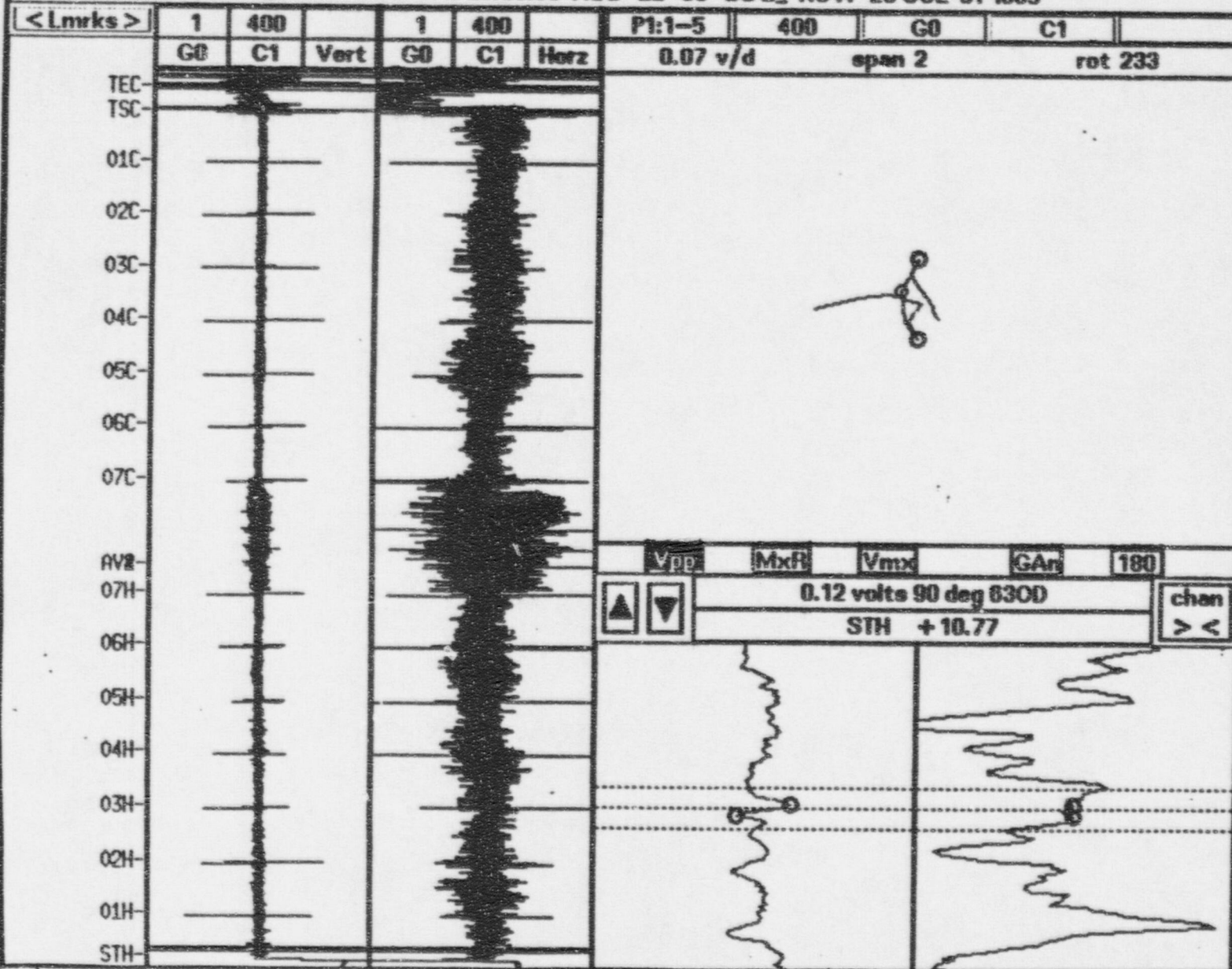
CIRC
NO HERS

RETRN
NO HERS

STH
= 7.42

Tube Comment: NDD

SGB_OCAL00002 SAT 20:58:55 AUG-22-98 SGB_ROW 25 COL 51 ID05



RPC: SCB_ICAL00007 SAT 23:23:57 M
Filter: OFF Pts/Scan=113 XTrans=0 YTrans=0 XRot=61 ZR

-88 SGBL R 25 C 51 8804 (MB)

Message

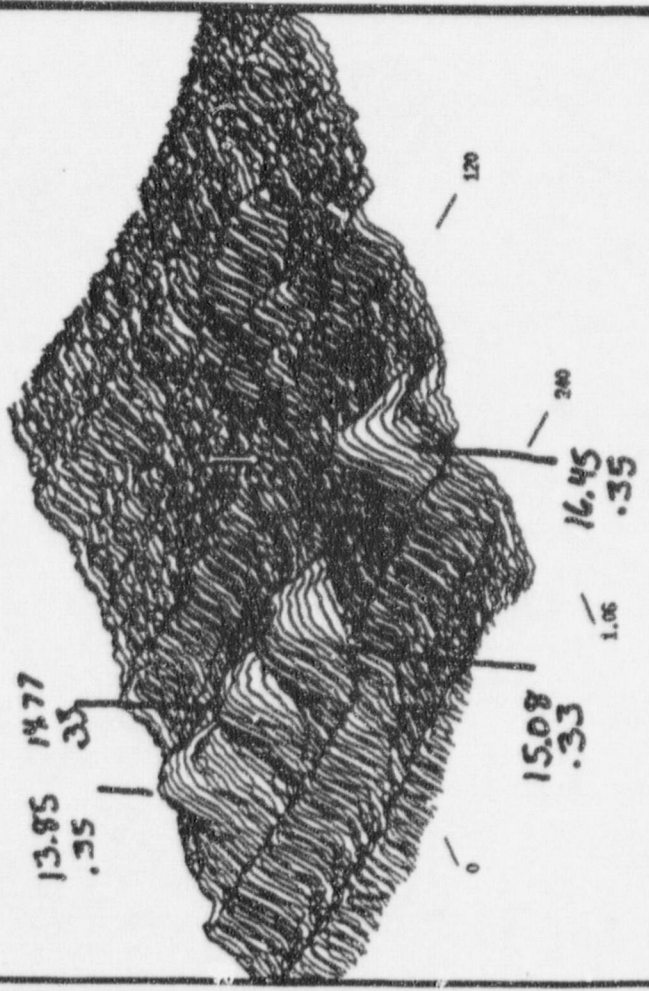
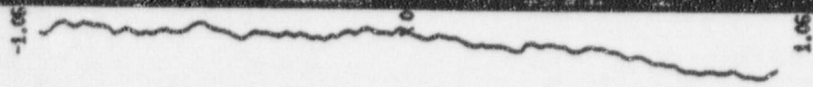
SHM HINCH OFF

WEARIFY OFF

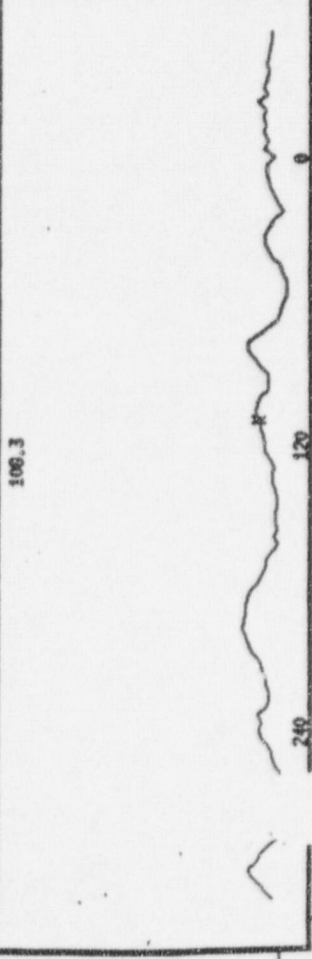
HERZ PLOT OFF

HERZ PLOT OFF

CSOM <PLOT>	180 PLOT
CHM (+/-)	USER SELECT
SCM (+/-)	SCM +/- 65Z
XSCALE = 2.0	YSCALE = 2.1
SCMS =117	T-OFS1 =57
SPM =10	R-SEEM ON
CIRC FROM	CIRC TO
ARCIAL FROM	ARCIAL TO



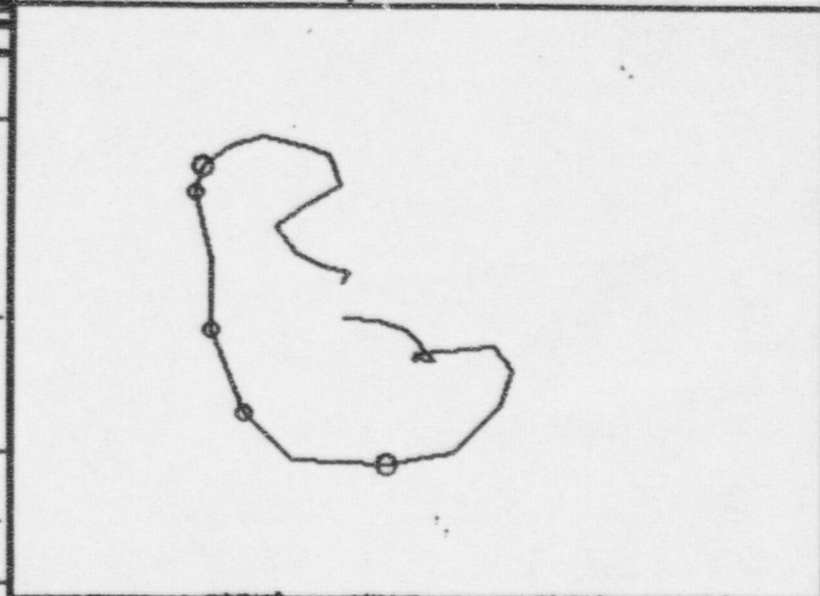
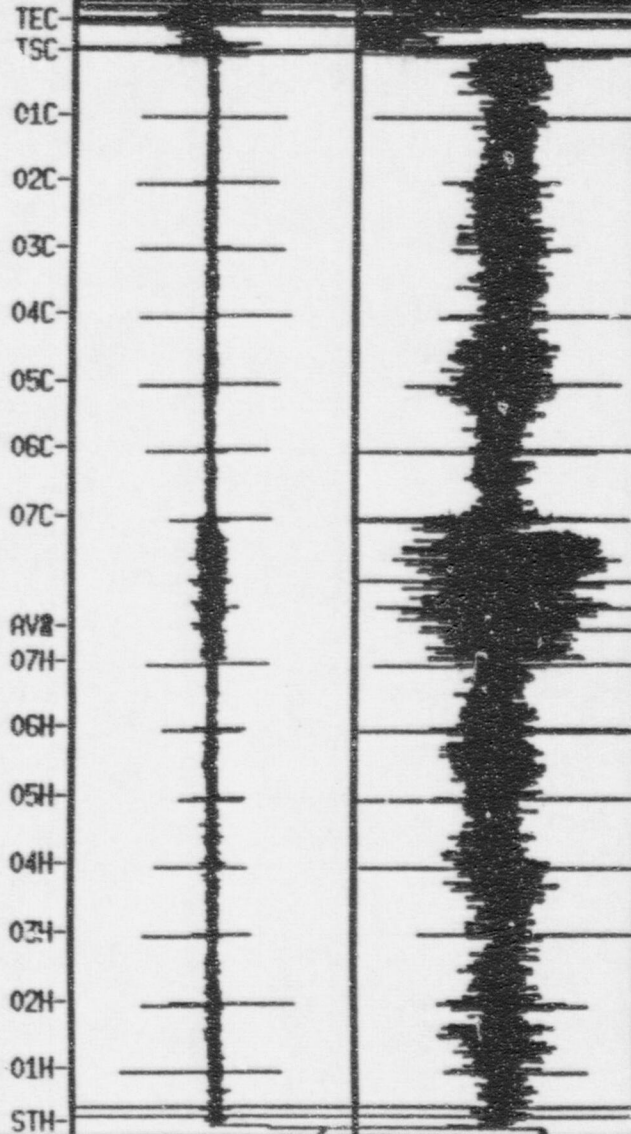
CIRC NO HEAS
ARCIAL NO HEAS
STN + 14.65



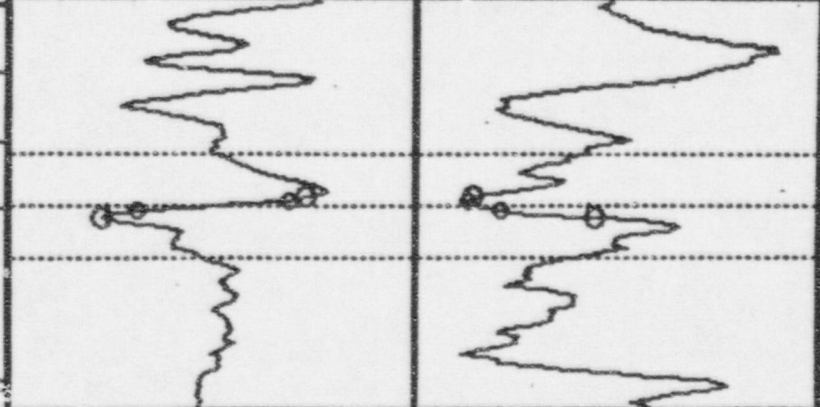
Tube Comment: NDD

SGB_OCAL00002 SAT 20:50:55 AUG-22-98 SGB_ROW 25 COL 51 1005

<Lmrks>	1	400		1	400		P1:1-5	400	G0	C1
	G0	C1	Vert	G0	C1	Horz	0.07 v/d	span 2		rot 233



Vpp	MxR	Vmx	GA	180
0.43 volts 79 deg 710D				chan
STH +11.11				> <



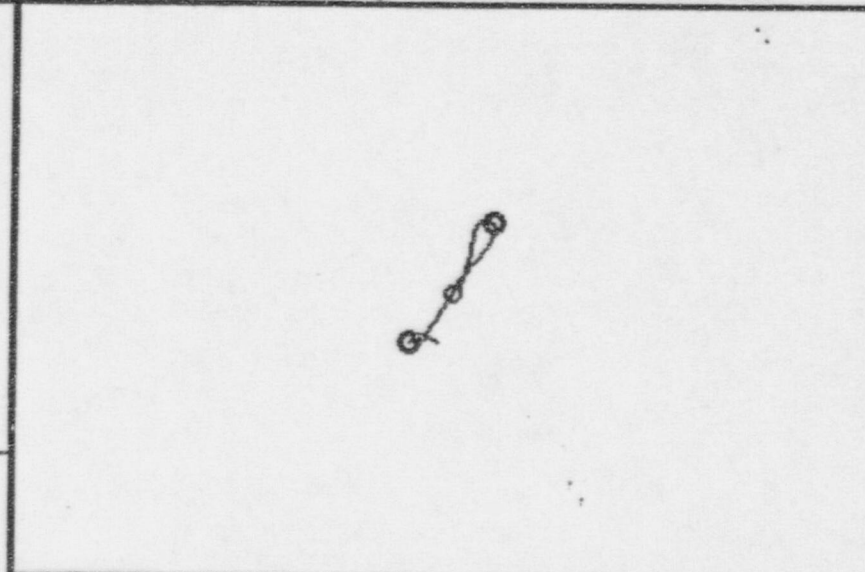
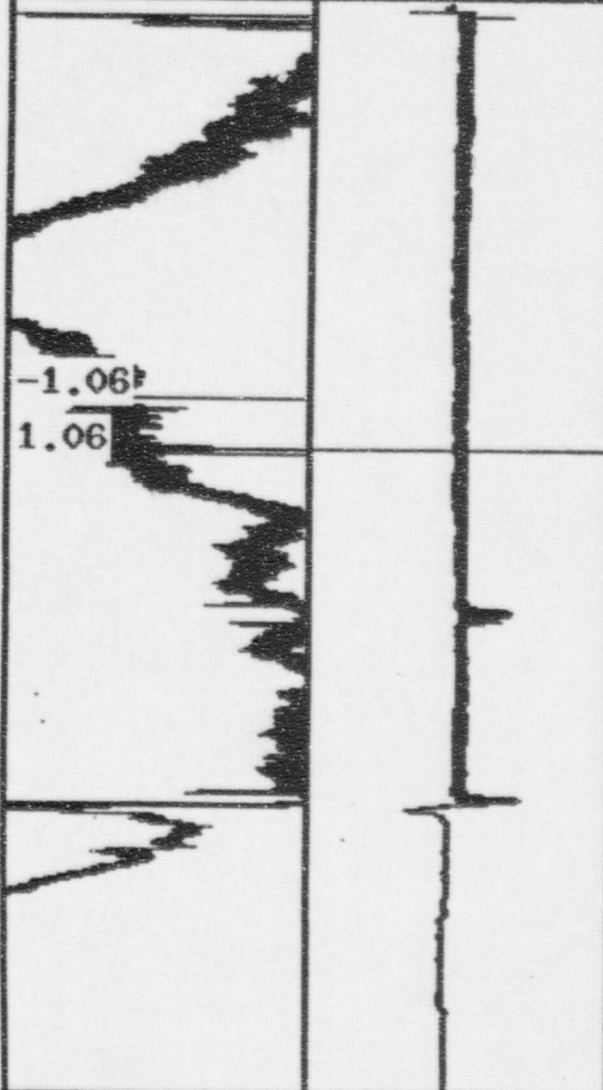
Tube Comment:

NDD

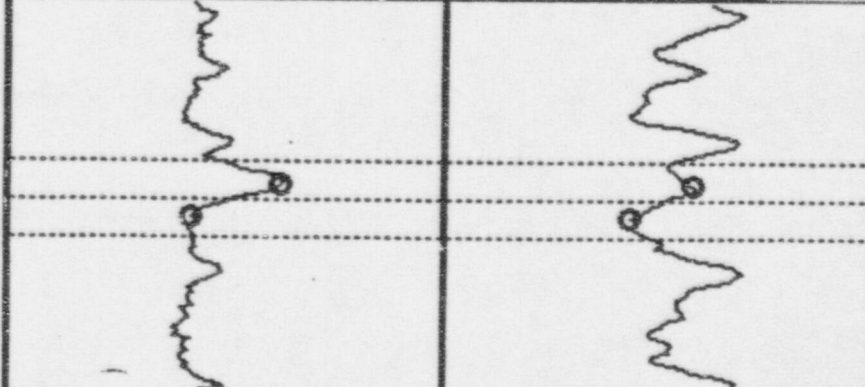
SGB_ICAL00007 SAT 23:23:57 MAY-09-98 SGB_ROW 25 COL 51 1004

<Lmrks>

1	300		5	75		1:	300	G0	C1	
G0	C1	Vert	G0	C1	Vert	0.14 v/d	span 10			rot 354



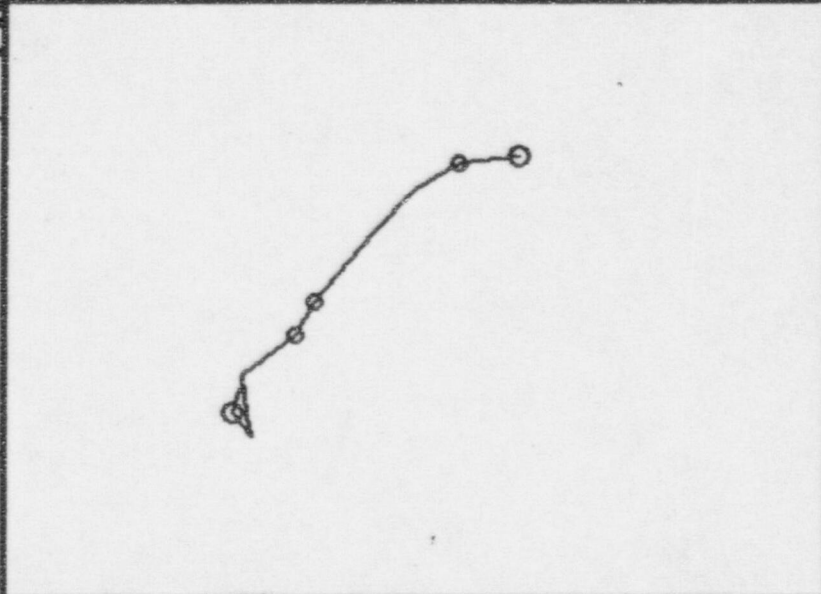
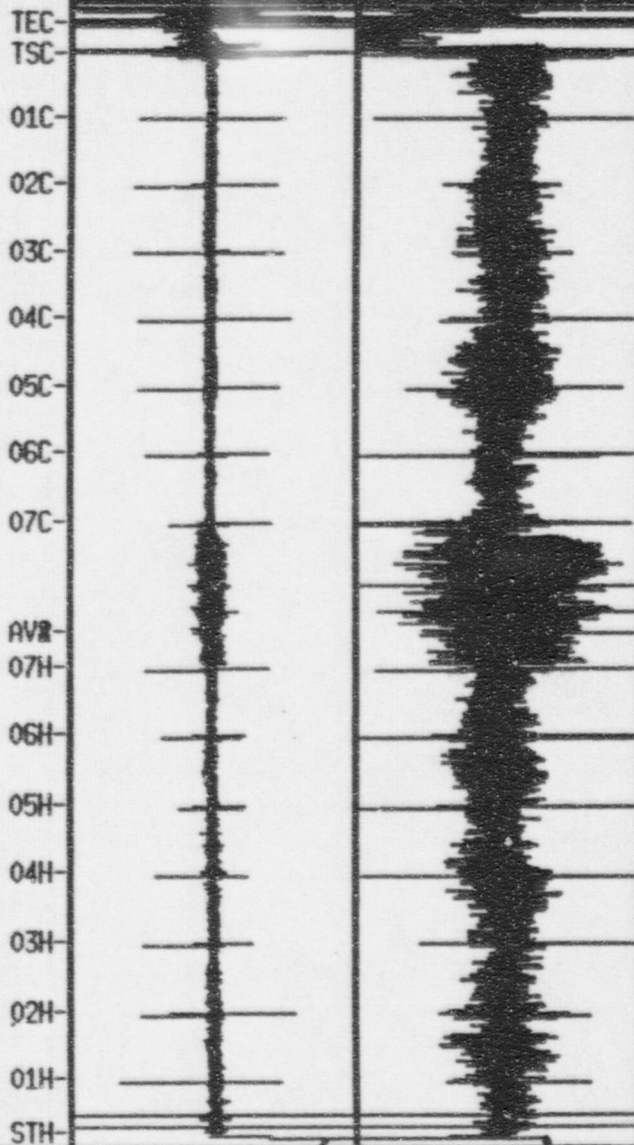
Vpp	MxR	Vmx	GA	180
▲	▼	0.35 volts 125 deg		chan
STH +13.85				> <



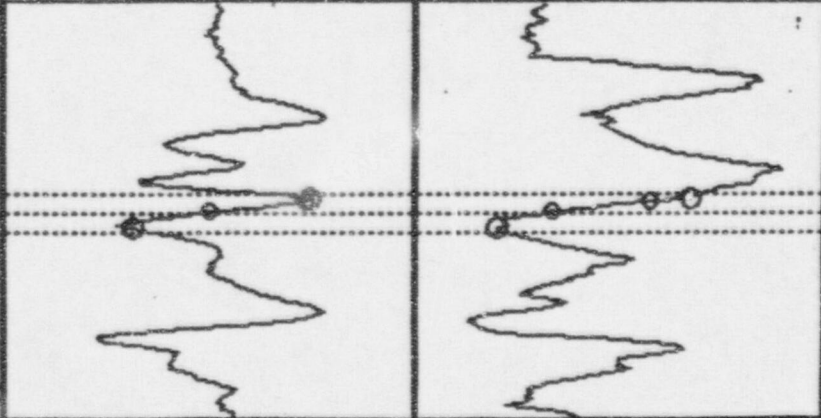
Tube Comment: NDD

SGB_OCAL00002 SAT 20:58:55 AUG-22-98 SG B_ ROW 25 COL 51 N005

< Lmrks >	1	400		1	400		P1:1-5	400	G0	C1	
	G0	C1	Vert	G0	C1	Horz	0.07 v/d	span 2	rot 233		



Vpp	MixH	Vmx	GAn	180
▲	▼	0.47 volts 133 deg 190D		
STH +15.08				chan > <

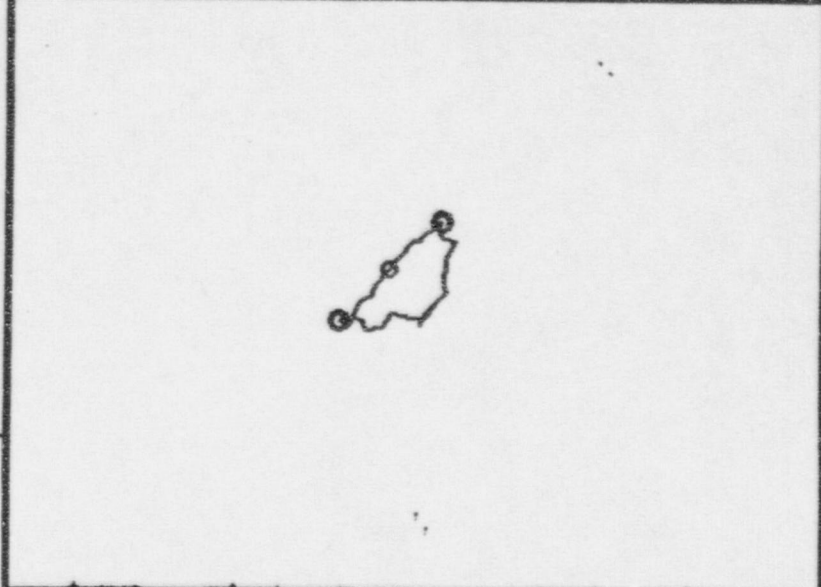
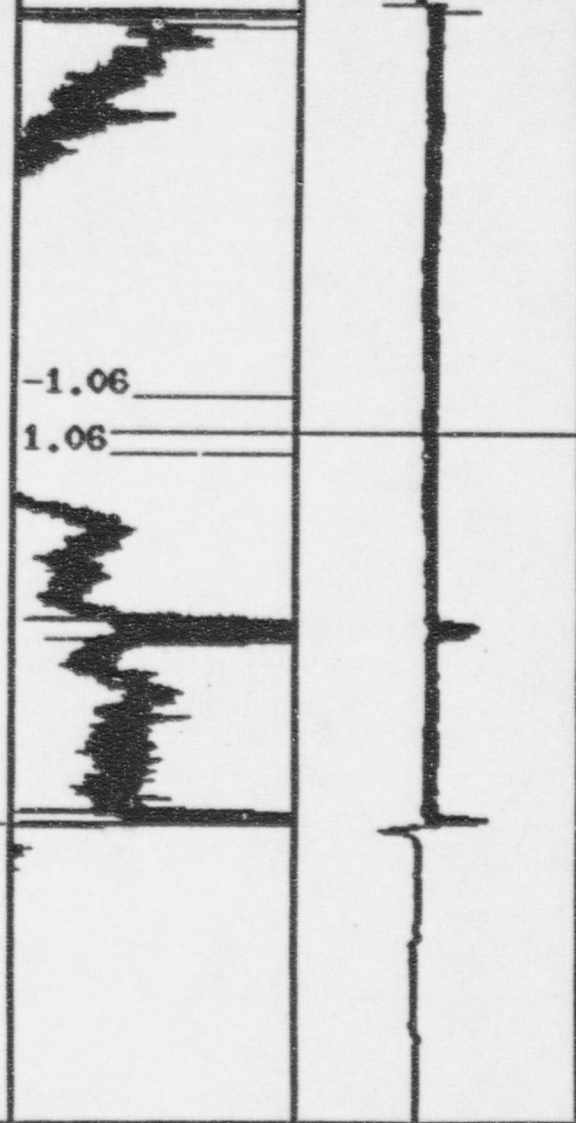


File Analysis System Tools Layout Add Displays Help

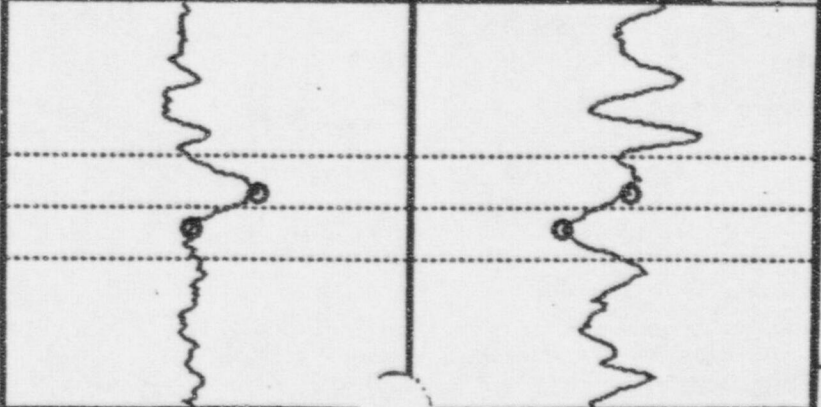
Tube Comment: MDD

SGB_ICAL00007 SAT 23:23:57 MAY-09-98 SGB_ROW 25 COL 51 1004

<Lmrks>	1	300		5	75		1:	300	G0	C1	
	G0	C1	Vert	G0	C1	Vert	0.14 v/d	span 9			rot 354



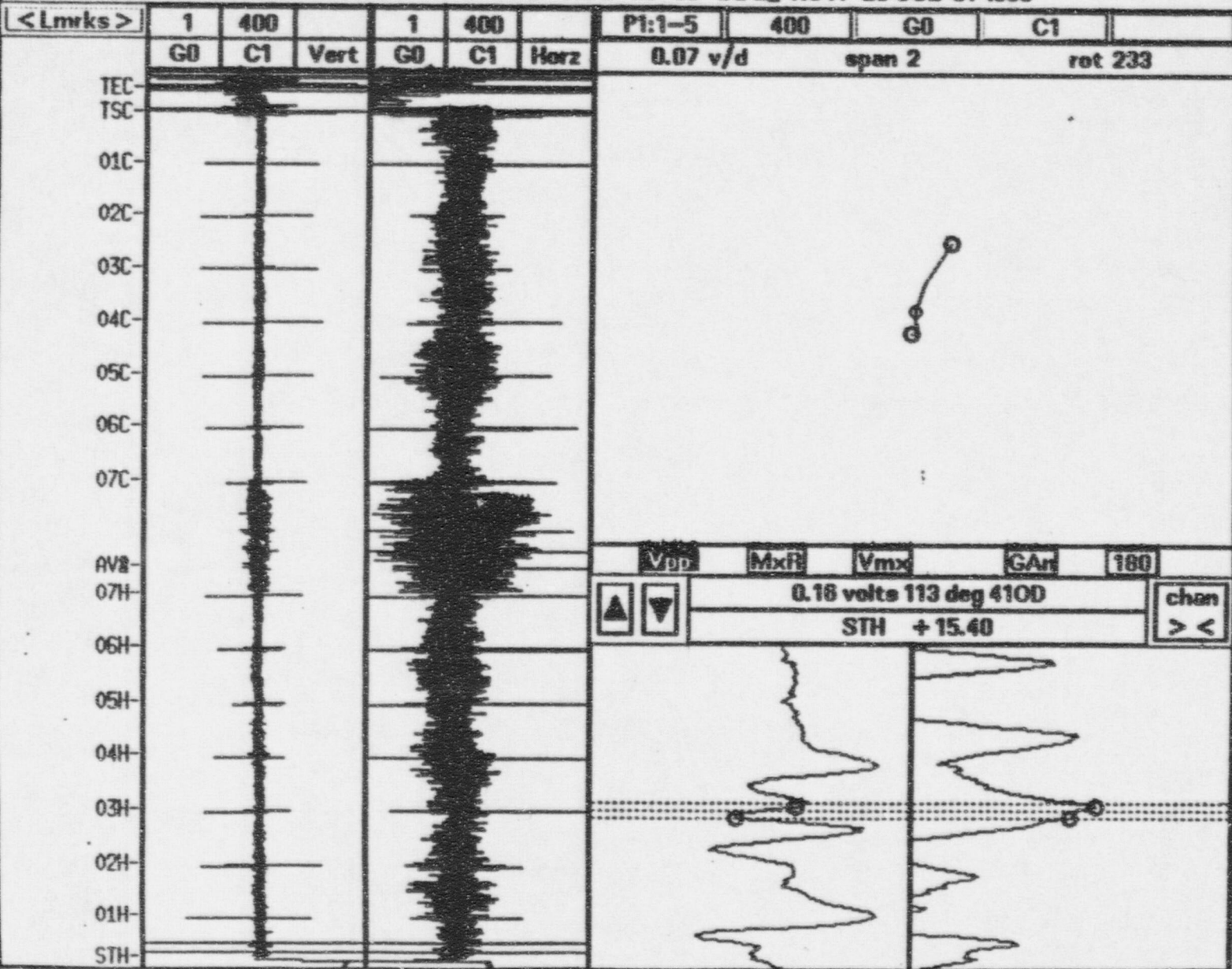
Vpp	MxRl	Vmx	GA	180
0.33 volts 136 deg				chan
STH +14.77				><



File Analysis System Tools Layout Add Displays Help

Tube Comment: NDD

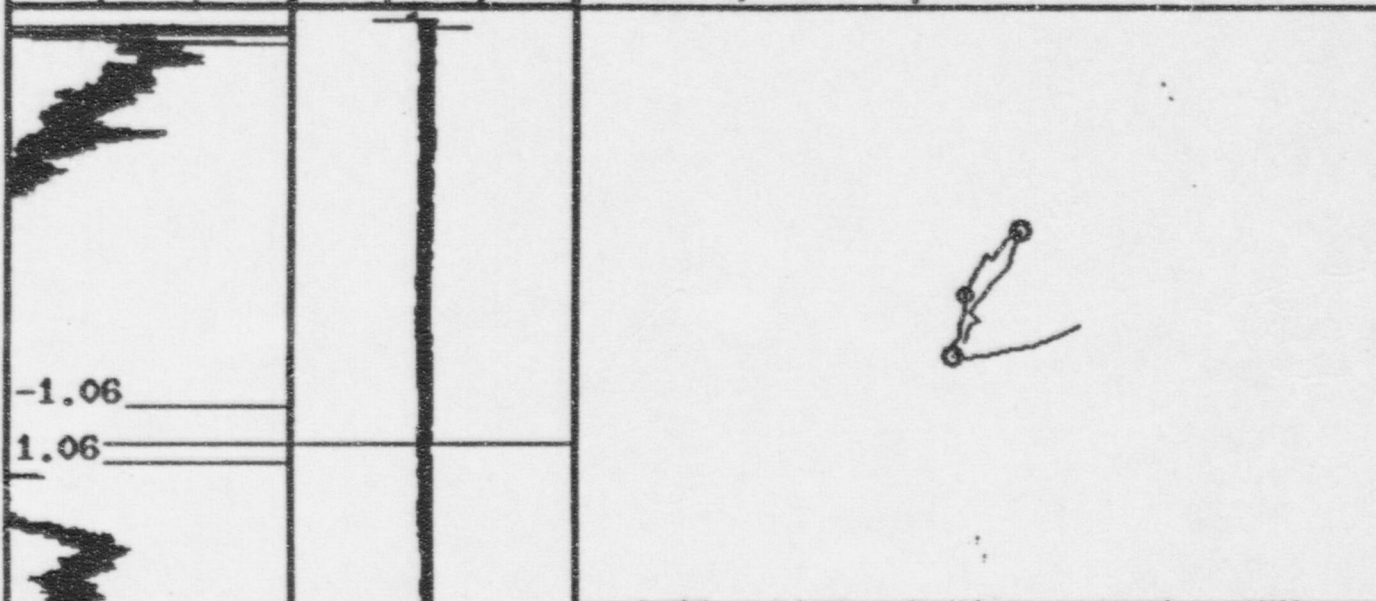
SGB_OCAL00002 SAT 20:58:55 AUG-22-98 SGB_ROW 25 COL 5: 005



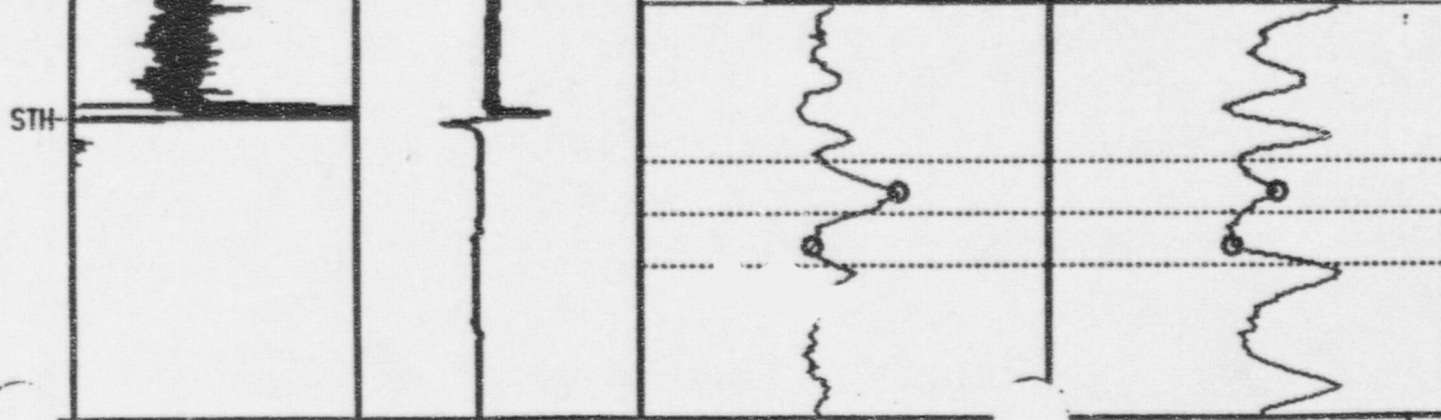
Tube Comment: NDD

SGB_ICAL00007 SAT 23:23:57 MAY-09-98 SGB_ROW 25 COL 51 1004

<Lmrks>	1	300		5	75		1:	300	G0	C1	
	G0	C1	Vert	G0	C1	Vert	0.14 v/d	span 9			rot 354

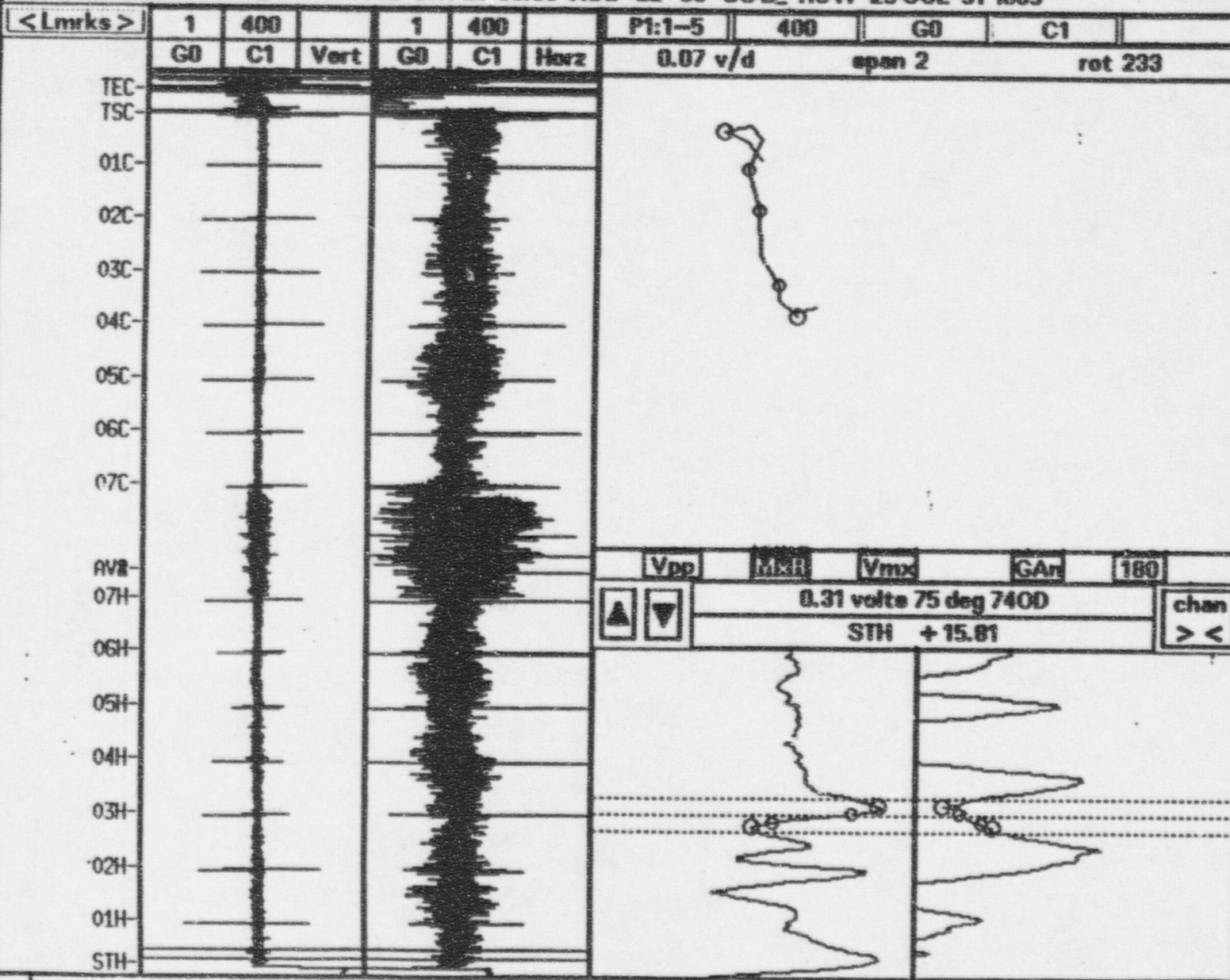


VDD	MxR	Vmx	GA	180
▲	▼	0.33 volts 118 deg		chan
STH +15.08				> <



Tube Comment: HDD

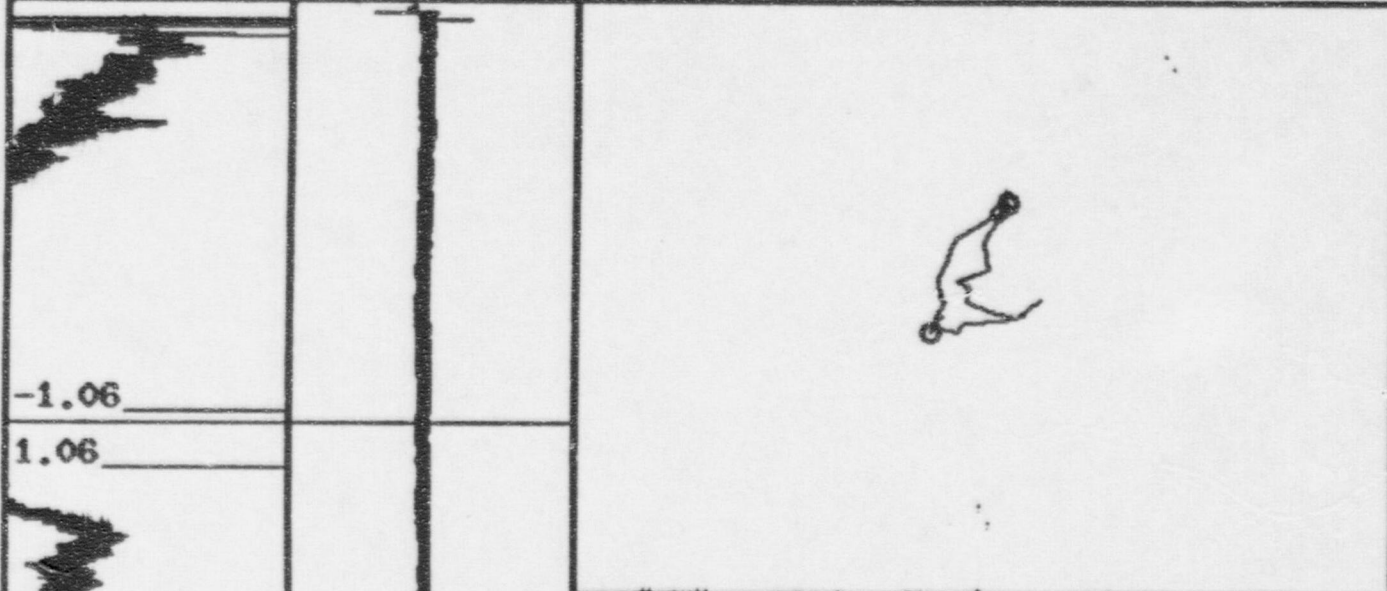
SGB_OCAL00002 SAT 20:58:55 AUG-22-98 SGB_ROW 25 COL 51 005



Tube Comment: NDD

SGB_ICAL00007 SAT 23:23:57 MAY-09-98 SGB_ROW 25 COL 51 I004

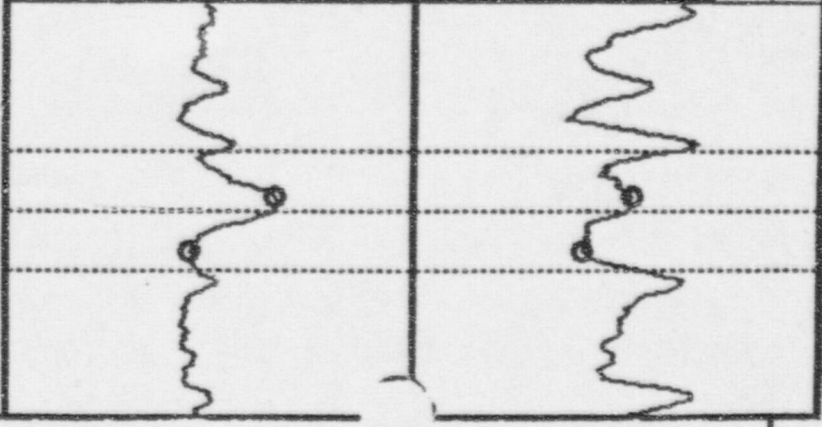
<Lmrks>	1	300		5	75		1:	300	G0	C1	
	G0	C1	Vert	G0	C1	Vert	0.14 v/d	span 9		rot 354	



-1.06
1.06

STH

Vpp	MxR	Vmx	GAr	180
0.35 volts 120 deg				chan
STH +15.45				> <

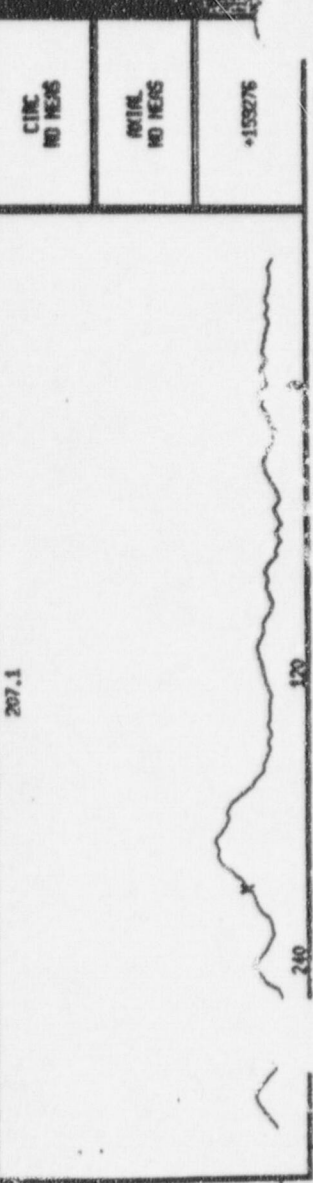
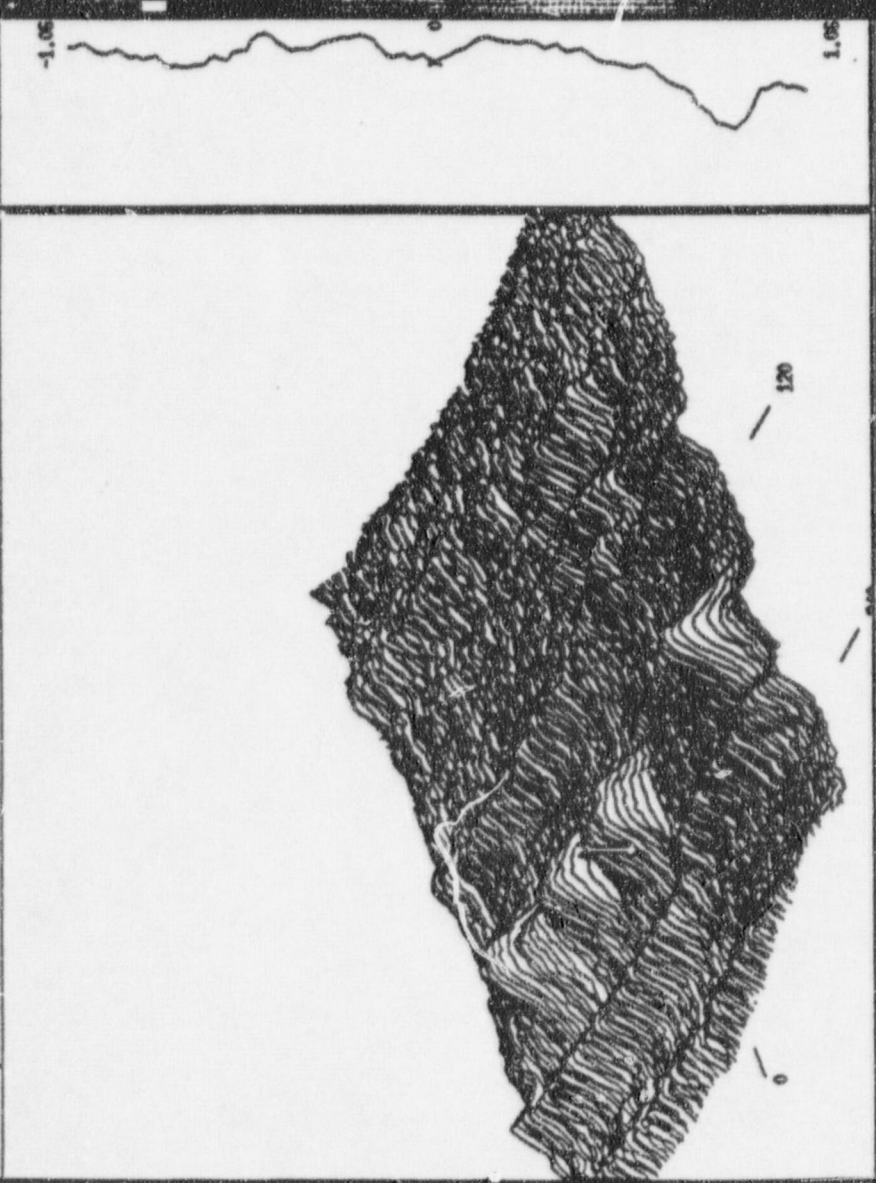


Filter: OFF Pts/Scan=113 XTrans=0 YTrans=0 Rot=61

Message

SHEN HIDDEN OFF
MAGNIFY OFF
HEXZ PLOT OFF

< OWN >	180 PLOT
1: 300 00 CI	USER SELECT
LSOHN (PLOT)	SOHN +/- 85Z
OWN (+/-)	YSOHL = 2.1
SOHN (+/-)	T-OST = 57
XSCALE = 2.0	R-SLEN ON
SOHNS = 117	CIRC FROM
SPRN = 10	CIRC TO
	ACTUAL FROM
	ACTUAL TO



CIRC NO HEIS
ACTUAL NO HEIS
+155276

HP: SGE,KCAL00067 SAT 23:23:57 No. 08-88 SGR, R 25 C 51 8004 [MS]

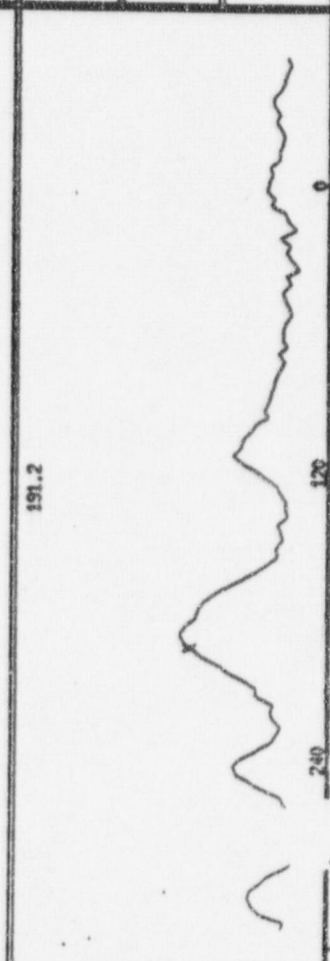
Filter:DF Pts/Scan:13 NTrans:0 YTrans:0 Plot:51 ZPlot:83

Message

< OWN >	
1: 300 GO CI	
CSOR: <PLOT>	180 PLOT
OWN (+/-)	USER SELECT
SOR (+/-)	SOR +/- 800
NSOR = 2.0	YSOR = 2.1
SORS = 189	T-OFST = 57
SPOR = 6	R-SELEN ON
CIRC FROM	CIRC TO
ARCIAL FROM	ARCIAL TO



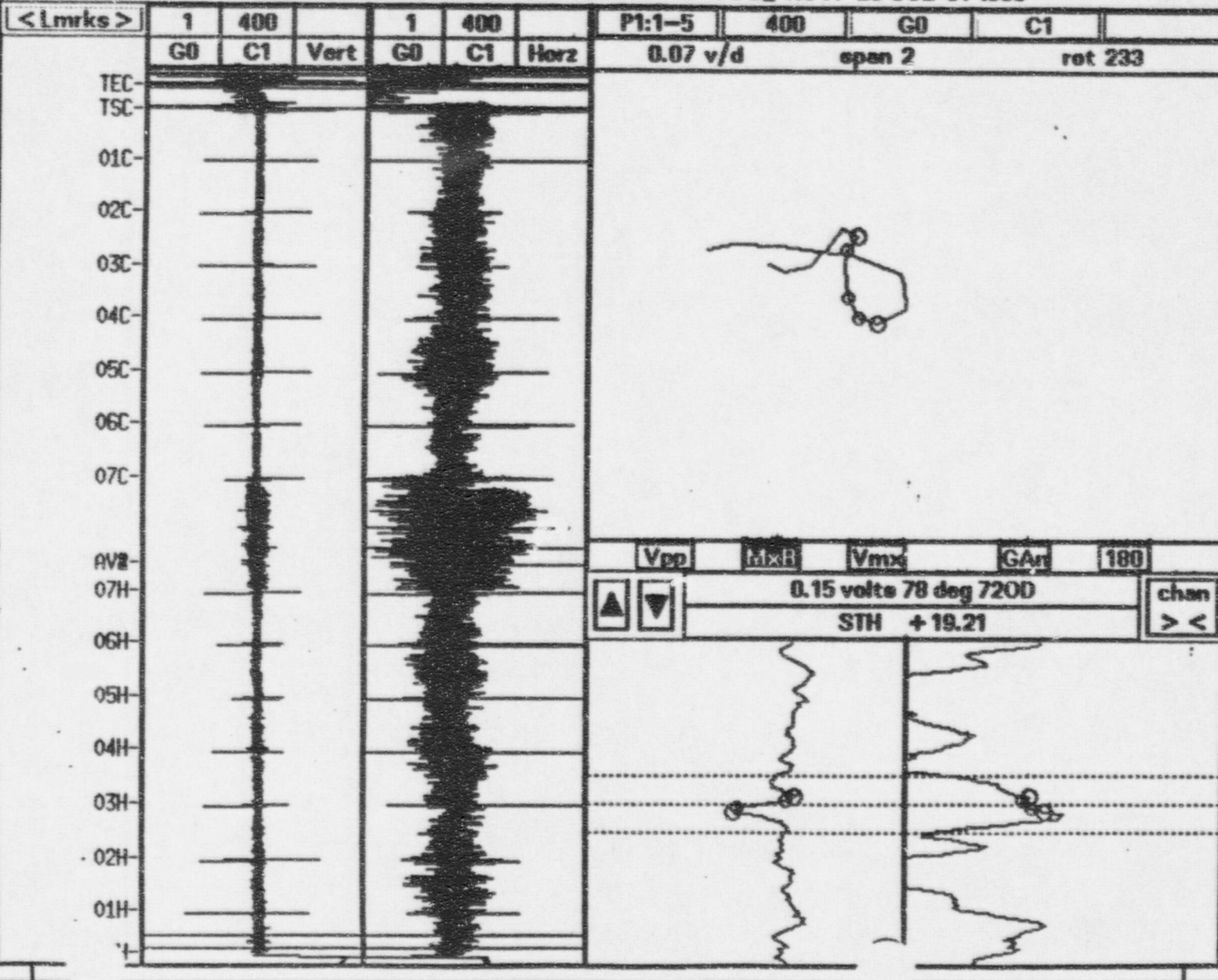
CIRC NO HEAS
ARCIAL NO HEAS
STN + 15.06



File Analysis System Tools Layout Add Displays Help

Tube Comment: NDD

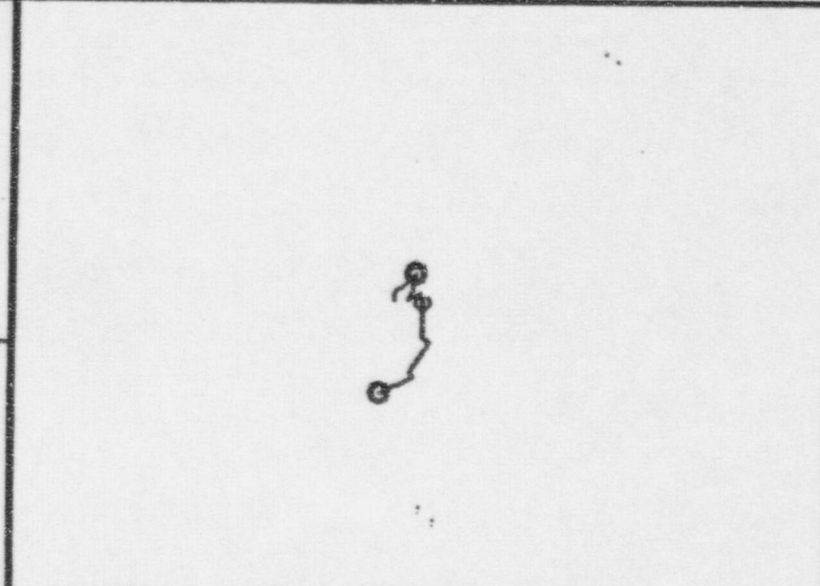
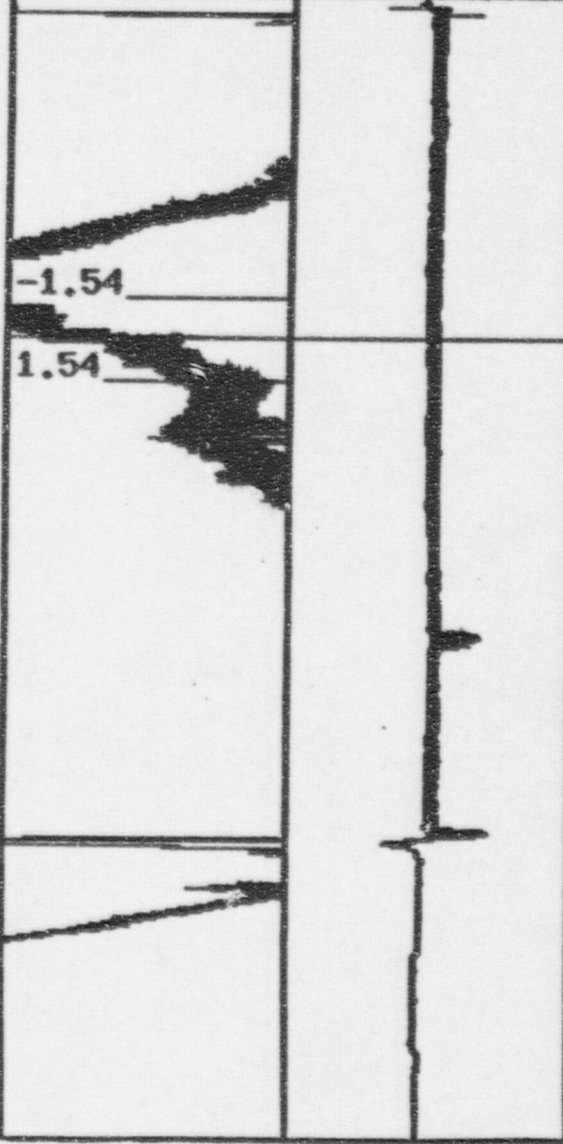
SGB_OCAL00002 SAT 20:58:55 AUG-22-98 SGB_ROW 25 COL 51 1005



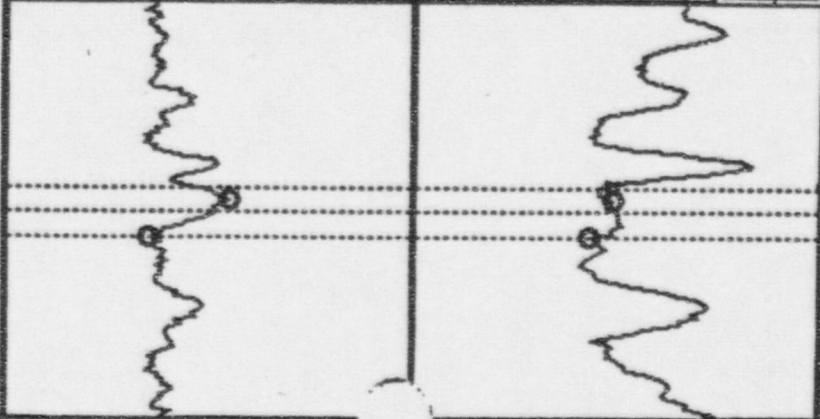
Tube Comment: NDD

SGB_ICAL00007 SAT 23:23:57 MAY-09-98 SGB_ROW 25 COL 51 R004

<Lmrks>	1	300		5	75		1:	300	G0	C1	
	G0	C1	Vert	G0	C1	Vert	0.10 v/d	span 8			rot 354



Vpp	MxH	Vmx	GAnt	180
0.21 volts 107 deg				chan
STH +18.50				><



RPC: SGR_ICAL00007 SAT 22:22:57 No. 08-88 SGR R 25 C 51 0004 [MB]

Filter:DF Pts/Scan=113 XFrame=0 YFrame=0 Rot=30 ZRot=11

Message

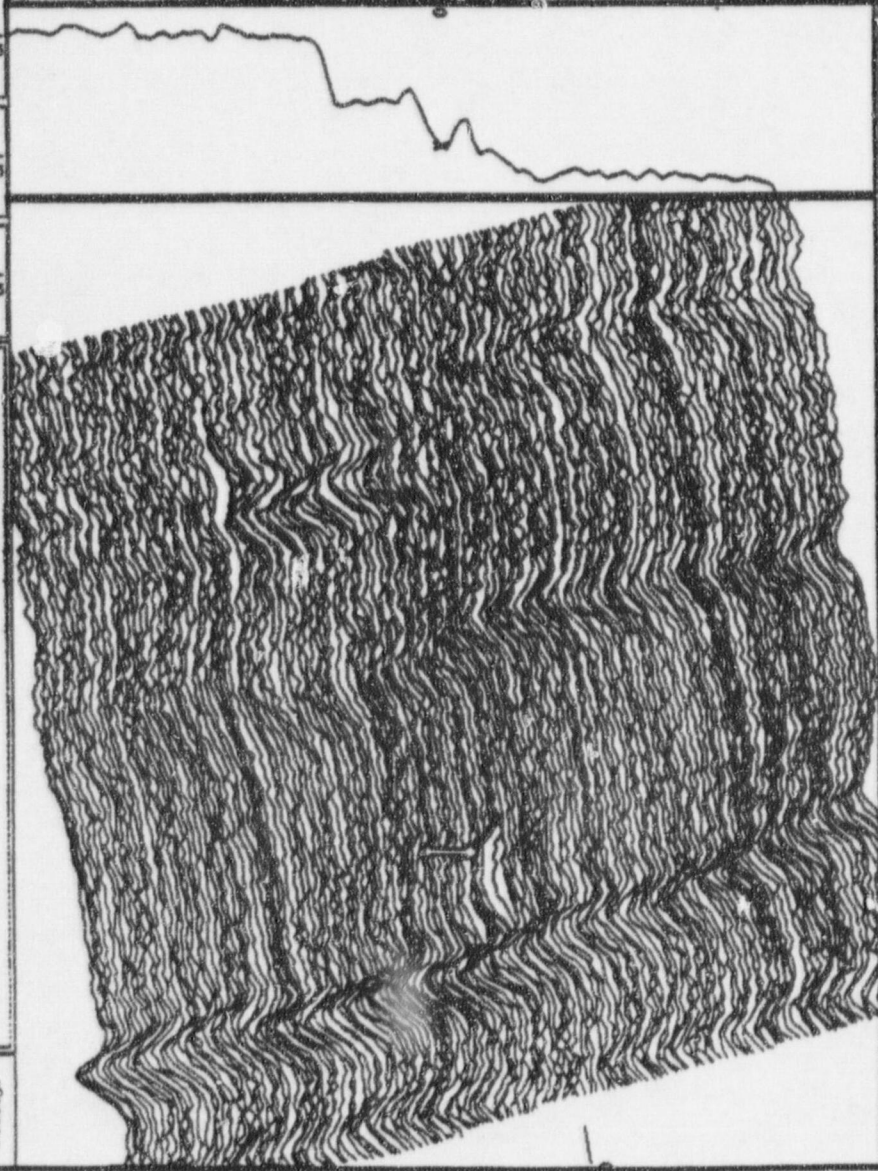
SHEN HIBREN OFF

PRIORITY OFF

HEMZ PLOT OFF

< CHW >
1: 300 00 CI

CSDW (PLOT)	180 PLOT
CHW (+/-)	USER SELECT
SDW (+/-)	SDW +/- 453
VSJLE = 2.0	VSJLE = 2.1
SDWS =163	T-DIST =97
SPWH =6	R-SLEN ON
CIRC FROM	CIRC TO
ACTUAL FROM	ACTUAL TO



187.5

CIRC
NO HEIG

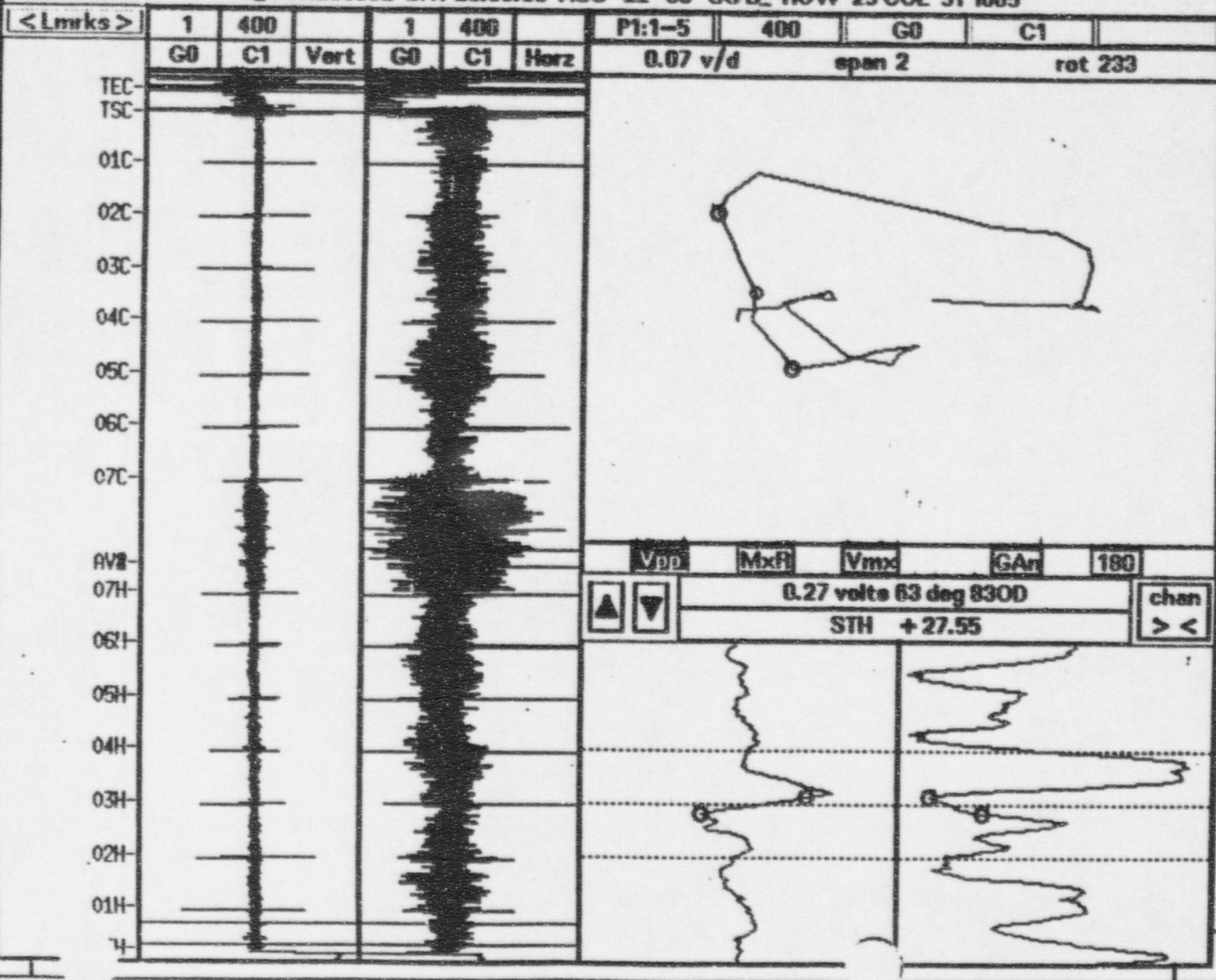
ACTUAL
NO HEIG

STH
= 18.50



Tube Comment: NDD

SGB_OCAL00002 SAT 20:58:55 AUG-22-98 SGB_ROW 25 COL 51 R005



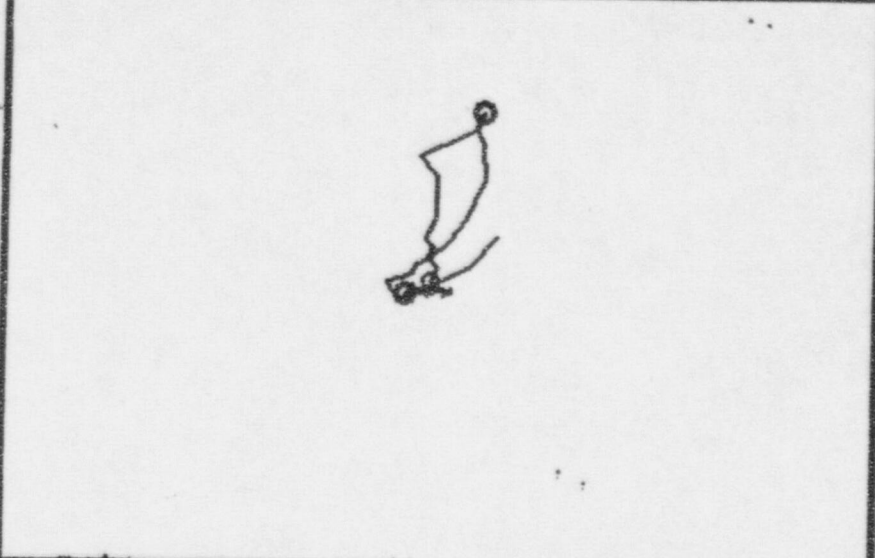
Eddynet95: Analysis [C]-1989,90 s3314 as primary [MB]

File Analysis System Tools Layout Add Displays Help

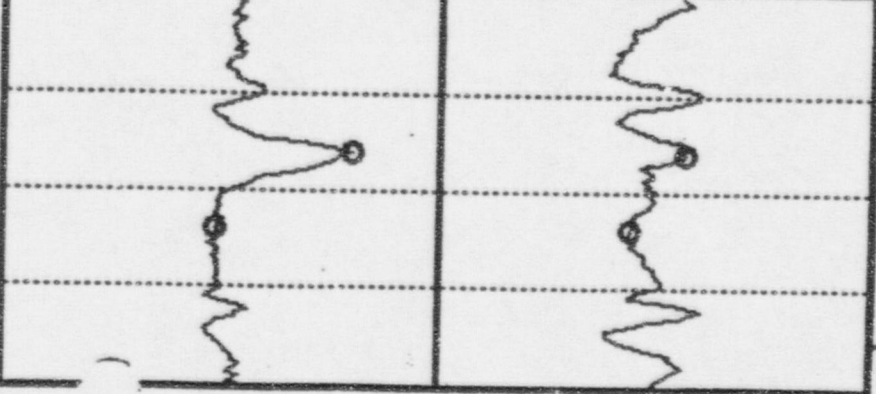
Tube Comment: NDD

SGB_ICAL00007 SAT 23:23:57 MAY-09-98 SGB_ROW 25 COL 51 1004

<Lmrks>	1	300		5	75		1:	300	G0	C1	
	G0	C1	Vert	G0	C1	Vert	0.14 v/d	span 10			rot 354



Vpp MxR Vmx GAn 180
0.47 volts 113 deg
STH +26.72 chan

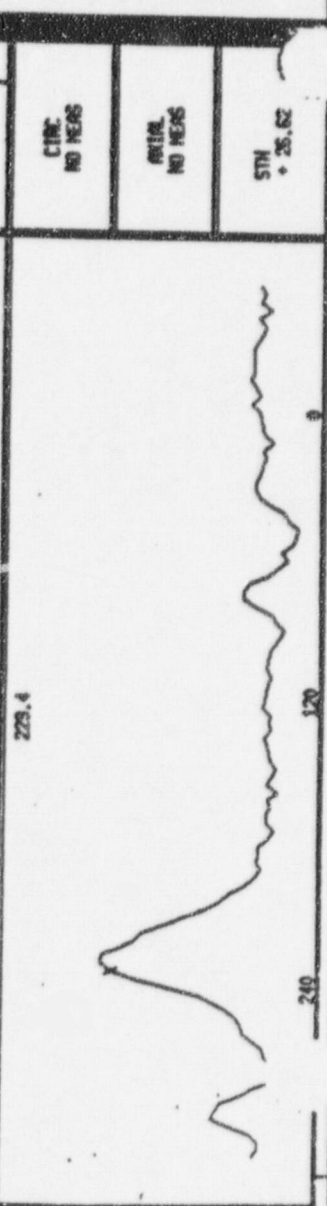
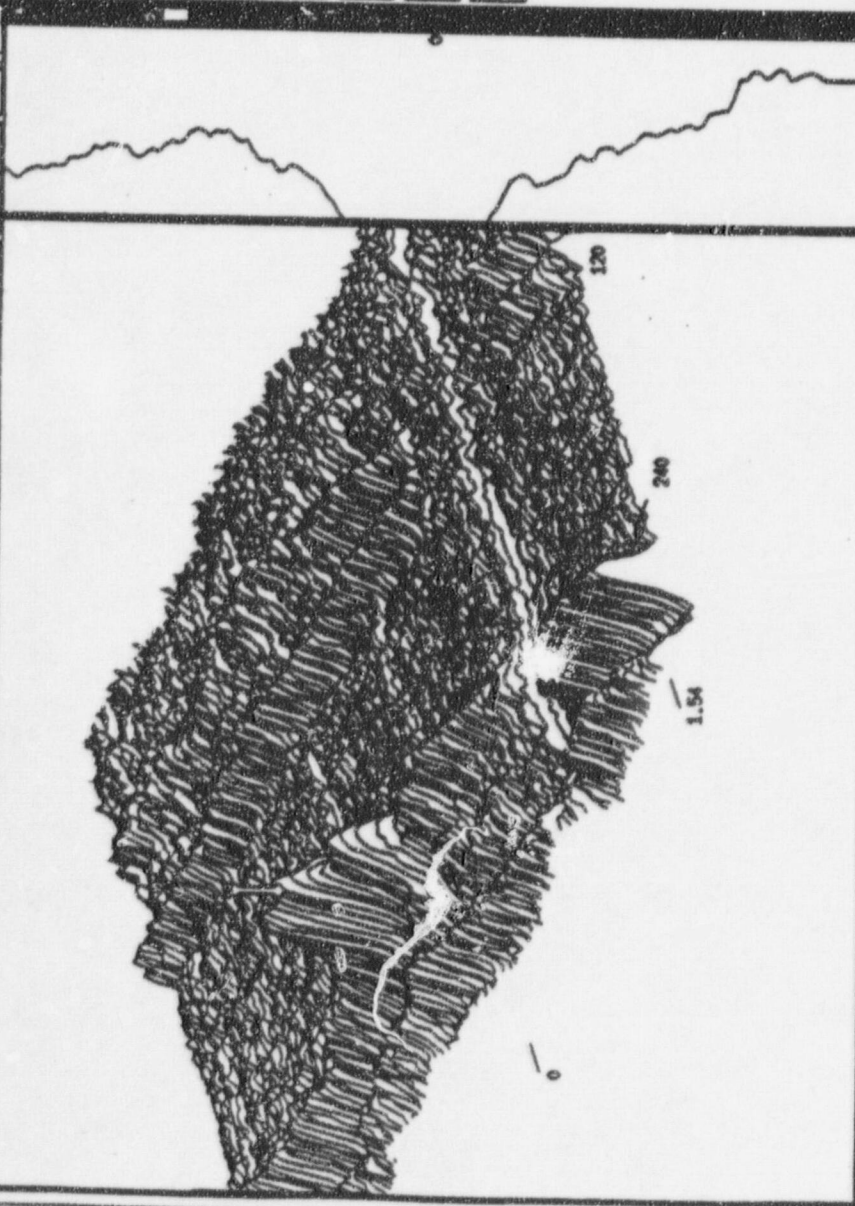


IPC: SGB_KAL00007 SAT 28-28-87 E
Filter:OFF Pts/Scan=113 X/Y=0 Y/Scan=0 X/Y=70 Z/Y=43

8-88 SGB R 25 C ST 0006 [SAB]

Message

SEM HIGH OFF
MAGNIFY OFF
HEIZ PLAT OFF



CIRC NO MEAS

ANAL NO MEAS

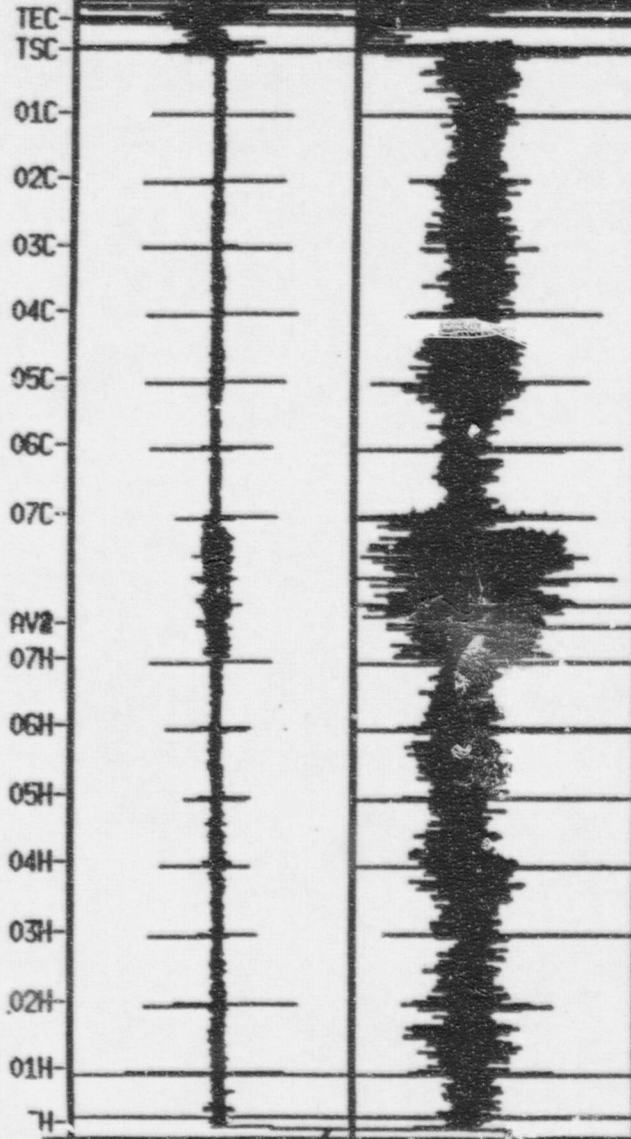
STH + 25.62

< CHN >	1: 300 GO CI
CSOIN (PLOT)	100 PLOT
CHN (v-v)	USER SELECT
SOIN (v-v)	SOIN +/- 0.03E
MSOINLE = 2.0	MSOINLE = 2.1
SOINB = 1.00	T-OYST = 0.7
SPIN = 6	R-SEEN ON
CIN FROM	CIRC TO
ANAL FROM	ANAL TO

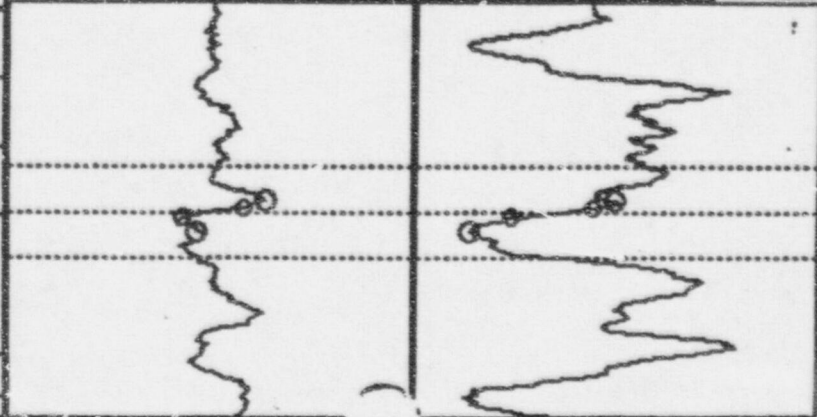
Tube Comment: NDD

SGE_OCAL00002 SAT 20:58:55 AUG-22-98 SGE_ROW 25 COL 51 K05

<Lmrks>	1	400		1	400		P1:1-5	400	G0	C1	
	G0	C1	Vert	G0	C1	Horz	0.07 v/d	span 2	rot 233		



Vpp	MAR	Vmx	GAr	180
▲	▼	0.29 volts 143 deg 60D		chan
STH +39.05				><



OWNER SNOG N 1 2 3 4 5 6 7 8
 PLANT J.M. FARLEY FREQ 300 200 200 100 75
 UNIT 1 DATE 05/09/98 SPAN 345 50 50 750 429
 S/G B LEG INLET ROT 11 4 225 188 216
 REEL NO. 7 DISK 1A COIL 1 1 4 1 1
 OPER/LVL HOPPER JM /I
 OPER/LVL / CHAN 9 10 11 12 13 14 15 16
 CAL STD EP501598 FREQ
 REF STD NA SPAN
 TUBE SIZE 00.8750D X .050 ROT
 MATERIAL INCONEL 600 COIL
 PROBE MEPTGPP52PH PROBE MANUFACTURED BY: ZETEC
 PROBE LGH 110FT EXT 50 FT SOFTWARE:ANSER 8.2 Rev 30 08/11/97 09:32
 TESTER TC6700 S/N: W13177
 AVE STD N/A PROBE EXTENSION TYPE: ZETEC LOW LOSS
 ACQUISITION PROCEDURE NO: MRS 2.4.2 APC35 REV 7ACT3: APR-10-198
 COMMENTS:

NEW PROBE HEAD 253817
 NEW MOTOR UNIT 197765

ACQUISITION PERFORMED BY WESTINGHOUSE

CHAN	FREQ	ROT	COIL
1	400Khz	232	1
2	400Khz	23	5
3	200Khz	358	1
4	200Khz	155	5
5	100Khz	71	1
6	100Khz	226	5
7	15Khz	98	1
8	15Khz	23	5

CHAN	NAME	ROT	COIL
9	M 1 1:5	235	

OWNER SNOC _____ CHAN 1 2 3 4 5 6 7 8
 PLANT J.M. FARLEY _____ FREQ 400 400 200 200 100 100 15 15
 UNIT 1 DATE 03/29/97 SPAN 53 62 75 78 50 70 121 253
 S/G B LEG OUTLET ROT 204 12 345 146 63 229 104 314
 REEL NO. 36 DISK 4A COIL 1 5 1 5 1 5 1 5
 OPER/LVL THOMAS GW ___/___II
 OPER/LVL ___/___ CHAN 9 10 11 12 13 14 15 16
 CAL STD ADVB03396 _____ FREQ
 REF STD ABO0592 _____ SPAN
 TUBE SIZE 0.875OD X 0.50 _____ ROT
 MATERIAL INCONEL 600 _____ COIL
 PROBE EL720LLMC _____ PROBE MANUFACTURED BY: _____
 PROBE LGH110_FT EXT50_FT SOFTWARE:AMSER 8.1 Rev 73 02/05/97 14:23
 TESTER TC6700 _____ S/N: W13176
 AVE STD N/A _____ PROBE EXTENSION TYPE: RG-174
 ACQUISITION PROCEDURE NO: MRS 2.4.2 APC35 REV5 ACTS:ALA 02 197
 COMMENTS:
 NEW PROBE REEL 24 PROBE #00880596 INSPECTION
 PROBE #00690397 ABSOLUTE

ACQUISITION PERFORMED BY WESTINGHOUSE

CHAN	FREQ	ROT	COIL
1	400Khz	232	1
2	400Khz	23	5
3	200Khz	358	1
4	200Khz	155	5
5	100Khz	71	1
6	100Khz	226	5
7	15Khz	98	1
8	15Khz	23	5

CHAN	NAME	ROT	COIL
9	M 1 1:5	235	

FARLEY UNIT #1

OCTOBER 1998 S/G Inspection
 Mix 20% Setup Value

ASME STANDARD	SETUP VALUE	DEPTH % OF AVG WALL			
		ASME 4 x 20 %	60%	20%	40%
→ 1) ADVB-031-96	2.14	20	59	20	37
2) ADVB-032-96	2.25	20	61	18	39
3) ADVB-033-96	2.28	20	61	18	37
4) ADVB-034-96	2.39	20	61	20	37
5) ADVB-035-96	2.22	20	59	18	37
6) ADVB-036-96	2.27	20	61	18	39

File Edit

Landmark Table Displayed: /eddy_resources/landmarks/W_series_51slv

Read Only

Eddy Landmark Table: /eddy_resources/landmarks/W_series_51slv

Current Scale

Make the
Landmark Table Displayed
the
Eddy Landmark Table

	Flow	Full	Straight
1	1	763.990	378.560
2	21	844.480	378.560
3	22	848.500	378.560
4	45	941.060	378.560

Inches

Lmrk Lbl	Height	Typ	Lmrk Lbl	Height	Typ	Lmrk Lbl	Height	Typ
TEH	0.01	END	16 07C	-374.52	TSP *	31		
TOR-HL	2.25	NON	17 06C	-324.02	TSP	32		
TSH	21.60	TSH	18 05C	-273.52	TSP	33		
5TH	29.60	TSP	19 04C	-223.02	TSP	34		
01H	71.52	TSP	20 03C	-172.52	TSP	35		
02H	122.02	TSP	21 02C	-122.02	TSP	36		
03H	172.52	TSP	22 01C	-71.52	TSP	37		
04H	223.02	TSP	23 TSC	-21.60	TSH	38		
05H	273.52	TSP	24 TOR-CL	-2.25	NON	39		
06H	324.02	TSP	25 TEC	-0.01	END	40		
07H	374.52	TSP	26			41		



WESTINGHOUSE SERIES 51 TUBESHEET MAP

TABLE 5.2

FARLEY UNIT # 1 AND UNIT #2 SUPPORT STRUCTURE MEASUREMENTS (INCHES)

<u>Location</u>	<u>Inches from TE</u>	<u>Center to Center</u>
Tube end	0.00	N/A
Top of Tubesheet	21.60	N/A
Center #1 TSP	71.52	49.92
Center #2 TSP	122.02	50.50
Center #3 TSP	172.52	50.50
Center #4 TSP	223.02	50.50
Center #5 TSP	273.52	50.50
Center #6 TSP	324.02	50.50
Center #7 TSP	374.52	50.50

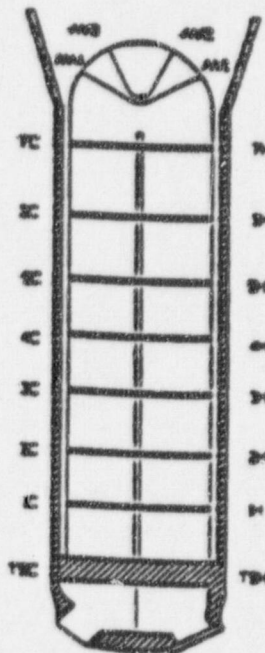


FIGURE 5.2
WESTINGHOUSE SERIES 51 STEAM GENERATOR