

OPERATING DATA REPORT

DOCKET NO. 50-302
 DATE 9-1-88
 COMPLETED BY J. Binkowski
 TELEPHONE (904)563-4485

OPERATING STATUS

1. Unit Name: Crystal River Unit 3
2. Reporting Period: 8-1-88 thru 8-31-88
3. Licensed Thermal Power (Mwt): 2544
4. Nameplate Rating (Gross MWe): 890
5. Design Electrical Rating (Net MWe): 825
6. Maximum Dependable Capacity (Gross MWe): 860
7. Maximum Dependable Capacity (Net MWe): 821
8. If Changes Occur in Capacity Ratings (Items Number 3 Through 7) Since Last Report, Give Reasons:
N/A

Notes

9. Power Level To Which Restricted, If Any (Net MWe): N/A
10. Reasons For Restrictions, If Any: N/A

	This Month	Yr.-to-Date	Cumulative
11. Hours In Reporting Period	<u>744</u>	<u>5855</u>	<u>100559</u>
12. Number Of Hours Reactor Was Critical	<u>744</u>	<u>5584</u>	<u>64910</u>
13. Reactor Reserve Shutdown Hours	<u>0.0</u>	<u>0.0</u>	<u>1280.6</u>
14. Hours Generator On-Line	<u>744</u>	<u>5518.6</u>	<u>63534.5</u>
15. Unit Reserve Shutdown Hours	<u>0.0</u>	<u>0.0</u>	<u>0.0</u>
16. Gross Thermal Energy Generated (MWH)	<u>1891906</u>	<u>13640521</u>	<u>143387709</u>
17. Gross Electrical Energy Generated (MWH)	<u>634816</u>	<u>4662459</u>	<u>49036992</u>
18. Net Electrical Energy Generated (MWH)	<u>604370</u>	<u>4439750</u>	<u>46573332</u>
19. Unit Service Factor	<u>100.0%</u>	<u>94.3%</u>	<u>63.2%</u>
20. Unit Availability Factor	<u>100.0%</u>	<u>94.3%</u>	<u>63.2%</u>
21. Unit Capacity Factor (Using MDC Net)	<u>98.9%</u>	<u>92.4%</u>	<u>57.7%</u>
22. Unit Capacity Factor (Using DER Net)	<u>98.5%</u>	<u>91.9%</u>	<u>56.1%</u>
23. Unit Forced Outage Rate	<u>0.0%</u>	<u>1.7%</u>	<u>21.5%</u>

24. Shutdowns Scheduled Over Next 6 Months (Type, Date, and Duration of Each):
Maintenance Outage is now scheduled for October 1, 1988.
Duration is estimated at 20 days.

25. If Shut Down At End Of Report Period, Estimated Date of Startup: _____

26. Units In Test Status (Prior to Commercial Operation):	Forecast	Achieved
INITIAL CRITICALITY	_____	<u>1/14/77</u>
INITIAL ELECTRICITY	_____	<u>1/30/77</u>
COMMERCIAL OPERATION	_____	<u>3/13/77</u>

IE24

AVERAGE DAILY UNIT POWER LEVEL

DOCKET NO. 50-302
 UNIT FLCRP-3
 DATE 9-1-88
 COMPLETED BY J. Binkowski
 TELEPHONE (904) 563-4485

MONTH August

DAY	AVERAGE DAILY POWER LEVEL (MWe-Net)	DAY	AVERAGE DAILY POWER LEVEL (MWe-Net)
1	811	17	816
2	815	18	814
3	814	19	806
4	808	20	811
5	825	21	815
6	801	22	812
7	814	23	805
8	805	24	803
9	806	25	805
10	809	26	817
11	816	27	813
12	811	28	816
13	814	29	820
14	817	30	815
15	817	31	815
16	820		

INSTRUCTIONS

On this format, list the average daily unit power level in MWe-Net for each day in the reporting month. Compute to the nearest whole megawatt.

UNIT SHUTDOWNS AND POWER REDUCTIONS

DOCKET NO. 50-302

UNIT NAME ELCRP-3

DATE 9-1-88

COMPLETED BY J. Binkowski

TELEPHONE (904)563-4485

REPORT MONTH August

No.	Date	Type ¹	Duration (Hours)	Reason ²	Method of Shutting Down Reactor ³	Licensee Event Report #	System Code ⁴	Component Code ⁵	Cause & Corrective Action to Prevent Recurrence
NONE									

¹
F: Forced
S: Scheduled

²
Reason:
A-Equipment Failure (Explain)
B-Maintenance of Test
C-Refueling
D-Regulatory Restriction
E-Operator Training & License Examination
F-Administrative
G-Operational Error (Explain)
H-Other (Explain)

³
Method _____
1-Manual
2-Manual Scram
3-Auto Scram
4-Continued
5-Reduced Load
9-Other

⁴
Exhibit G - Instructions for Preparation of Data Entry Sheets for Licensee Event Report (LER) File (NUREG-0161)

⁵
Exhibit I - Same Source

MONTHLY OPERATIONAL SUMMARY STATEMENT

DOCKET NO. 50-302

UNIT FLCRP-3

DATE 9-1-88

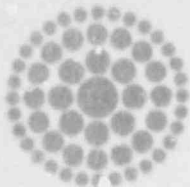
COMPLETED BY J. Binkowski

TELEPHONE (904)563-4485

MONTH August

SUMMARY STATEMENT:

Crystal River Unit 3 operated routinely with no significant power reductions. Plant output was limited by condenser delta-T restrictions occurring due to lower circulating water flow during periods of low tide.



**Florida
Power**
CORPORATION

September 13, 1988
3F0988-09

Document Control Desk
U.S. Nuclear Regulatory Commission
Washington, DC 20555

Subject: Crystal River Unit 3
Docket No. 50-302
Operating License No. DPR-72
Monthly Operating Report

Dear Sir:

Attached is the Crystal River Unit 3 August 1988 Monthly Operating Report. This report is submitted in accordance with Technical Specification 6.9.1.6.

Sincerely,

K.R. Wilson, Manager
Nuclear Licensing

/wla

Attachment

xc: Regional Administrator, Region II
Senior Resident Inspector

IE24
1/1