

INDEX

ADMINISTRATIVE CONTROLS

<u>SECTION</u>	<u>PAGE</u>
<u>6.1 RESPONSIBILITY</u>	6-1
<u>6.2 ORGANIZATION</u>	
6.2.1 OFFSITE <i>AND ONSITE ORGANIZATIONS</i>	6-1
6.2.2 UNIT STAFF.....	6-1
6.2.3 INDEPENDENT SAFETY ENGINEERING GROUP (ISEG)	
Function.....	6-2
Composition.....	6-2
Responsibilities.....	6-6
Authority.....	6-6
6.2.4 SHIFT TECHNICAL ADVISOR.....	6-6
<u>6.3 UNIT STAFF QUALIFICATIONS</u>	6-6
<u>6.4 TRAINING</u>	6-6
<u>6.5 REVIEW AND AUDIT</u>	
6.5.1 PLANT SAFETY REVIEW COMMITTEE (PSRC)	
Function.....	6-6
Composition.....	6-7
Alternates.....	6-7
Meeting Frequency.....	6-7
Quorum.....	6-7
Responsibilities.....	6-7
Authority.....	6-8
Records.....	6-8
6.5.2 SAFETY REVIEW COMMITTEE (SRC)	
Function.....	6-9
Composition.....	6-9
Alternates.....	6-9
Consultants.....	6-10
Meeting Frequency.....	6-10
Quorum.....	6-10

6.0 ADMINISTRATIVE CONTROLS

6.1 RESPONSIBILITY

6.1.1 The GGNS General Manager shall be responsible for overall unit operation and shall delegate in writing the succession to this responsibility during his absence.

6.1.2 The Shift Superintendent or, during his absence from the Control Room, a designated individual shall be responsible for the Control Room command function. A management directive to this effect, signed by the Vice President, Nuclear Operations shall be reissued to all station personnel on an annual basis.

6.2 ORGANIZATION

6.2.1 OFFSITE AND ONSITE ORGANIZATIONS

~~The offsite organization for unit management and technical support shall be as shown on Figure 6.2.1-1.~~

Insert 1 →

6.2.2 UNIT STAFF

The unit organization shall be ^{subject to the following:} ~~as shown on Figure 6.2.2-1 and:~~

- a. Each on duty shift shall be composed of at least the minimum shift crew composition shown in Table 6.2.2-1.
- b. At least one licensed Reactor Operator shall be in the control room when fuel is in the reactor. In addition, while the reactor is in OPERATIONAL CONDITION 1, 2 or 3, at least one licensed Senior Reactor Operator shall be in the Control Room.
- c. A health physics technician* shall be onsite when fuel is in the reactor.
- d. All CORE ALTERATIONS shall be observed and directly supervised by either a licensed Senior Reactor Operator or Senior Reactor Operator Limited to Fuel Handling who has no other concurrent responsibilities during this operation.
- e. A site Fire Brigade of at least 5 members shall be maintained onsite at all times*. The Fire Brigade shall not include the Shift Superintendent, the STA, the two other members of the minimum shift crew necessary for safe shutdown of the unit, and any personnel required for other essential functions during a fire emergency. At least one AG shall be available to respond to non-fire-fighting commands from the Control Room.

*The number of health physics technicians and Fire Brigade personnel may be less than the minimum requirements for a period of time not to exceed 2 hours in order to accommodate unexpected absence provided immediate action is taken to fill the required positions.

Insert 1

Onsite and offsite organizations shall be established for unit organization and corporate management, respectively. The onsite and offsite organizations shall include the positions for activities affecting the safety of the nuclear power plant.

- a. Lines of authority, responsibility, and communication shall be established and defined for the highest management levels through intermediate levels to and including all operating organization positions. These relationships shall be documented and updated, as appropriate, in the form of organization charts, functional descriptions of departmental responsibilities and relationships, and job descriptions for key personnel positions, or in equivalent forms of documentation. These requirements shall be documented in the UFSAR and updated in accordance with 10CFR50.71(e).
- b. The GGNS General Manager shall be responsible for overall unit safe operation and shall have control over those onsite activities necessary for safe operation and maintenance of the plant.
- c. The Vice President, Nuclear Operations shall have corporate responsibility for overall plant nuclear safety and shall take any measures needed to ensure acceptable performance of the staff in operating, maintaining, and providing technical support to the plant to ensure nuclear safety.
- d. The individuals who train the operating staff and those who carry out health physics and quality assurance functions may report to the appropriate onsite manager; however, they shall have sufficient organizational freedom to ensure their independence from operating pressures.

ADMINISTRATIVE CONTROLS

UNIT STAFF (Continued)

- f. Administrative procedures shall be developed and implemented to limit the working hours of unit staff who perform safety-related functions; e.g., senior reactor operators, reactor operators, health physicists, auxiliary operators, and key maintenance personnel.

Adequate shift coverage shall be maintained without routine heavy use of overtime. However, in the event that unforeseen problems require substantial amounts of overtime to be used, the following guidelines shall be followed:

1. An individual should not be permitted to work more than 16 hours straight, excluding shift turnover time.
2. An individual should not be permitted to work more than 16 hours in any 24-hour period, nor more than 24 hours in any 48-hour period, nor more than 72 hours in any seven-day period, all excluding shift turnover time.
3. A break of at least eight hours should be allowed between work periods, including shift turnover time.
4. Except during extended shutdown periods, the use of overtime should be considered on an individual basis and not for the entire staff on a shift.

Any deviation from the above guidelines shall be authorized by the GGNS General Manager or his designee, or higher levels of management, in accordance with established procedures and with documentation of the basis for granting the deviation. Controls shall be included in the procedures such that individual overtime shall be reviewed monthly by the GGNS General Manager or his designee to assure that excessive hours have not been assigned. Routine deviation from the above guidelines is not authorized.

Insert 2 →

6.2.3 INDEPENDENT SAFETY ENGINEERING GROUP (ISEG)

FUNCTION

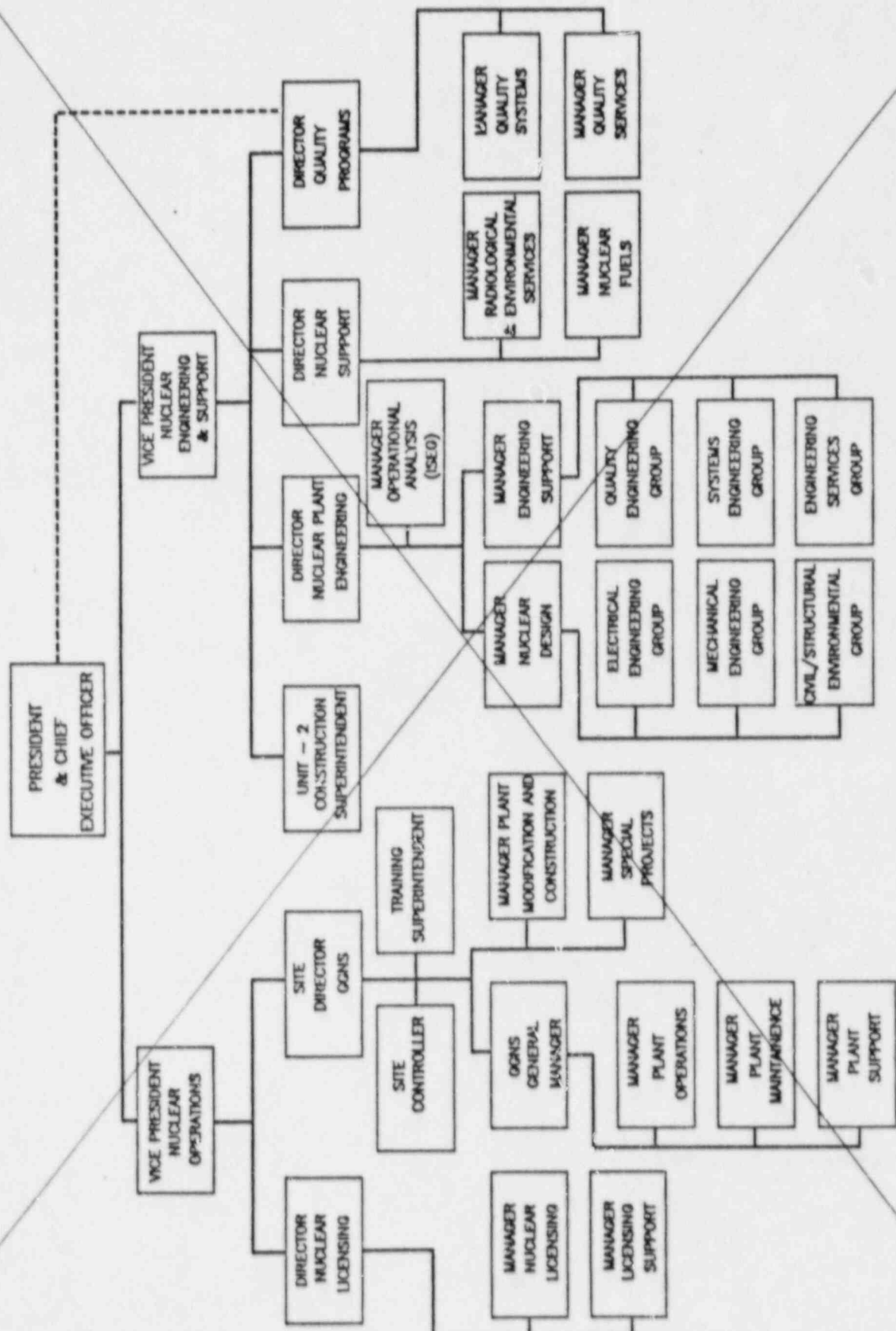
6.2.3.1 The ISEG shall function to examine unit operating characteristics, NRC issuances, industry advisories, Licensee Event Reports, and other sources of plant design and operating experience information, including plants of similar design, which may indicate areas for improving plant safety.

COMPOSITION

6.2.3.2 The ISEG shall be composed of a multi-disciplined dedicated, onsite, group with a minimum assigned complement of five engineers or appropriate specialists.

Insert 2

- g. The Operations Superintendent, Shift Superintendents, Operations Assistants, and Shift Supervisors shall each hold a Senior Reactor Operator License.



----- QUALITY ASSURANCE POLICY MATTERS AND ESCALATION PATH

FIGURE 6.2.1-1 OFFSITE ORGANIZATION
DELETE

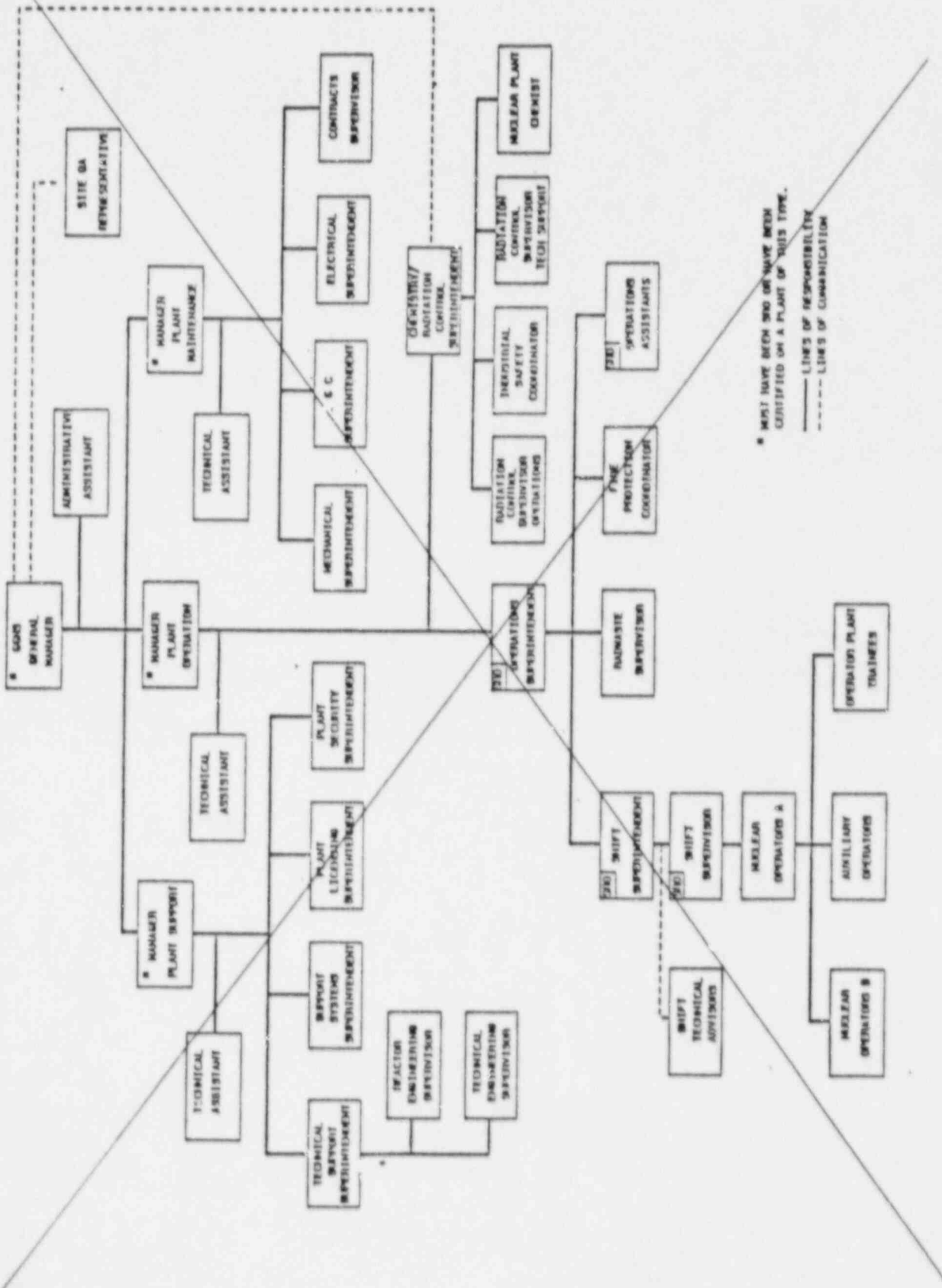


FIGURE 6.2.2-1 UNIT ORGANIZATION

DELETE