

May 4, 1988

Docket No. 50-425

LICENSEE: Georgia Power Company  
FACILITIES: Vogtle Unit 2  
SUBJECT: SUMMARY OF MEETING HELD MAY 4, 1988, TO DISCUSS THE STATUS OF  
VOGTLE UNIT 2

On May 4, 1988, the staff met with representatives of the Georgia Power Company at the NRC offices in Rockville, Maryland to discuss the status of Vogtle Unit 2. Participants are listed in Enclosure 1.

The agenda for the meeting is included as Enclosure 2. Enclosure 3 is the viewgraphs reviewed at the meeting. GPC stated that they are on schedule for a fuel load date of February 28, 1989.

*ISI*

Jon B. Hopkins, Project Manager  
Project Directorate II-3  
Division of Reactor Projects - I/II

Enclosures:  
As stated

cc:  
See next page

*J* PM:PDII-3  
JHopkins:pw  
5/4/88

8805100120 880504  
PDR ADOCK 05000425  
A PDR



UNITED STATES  
NUCLEAR REGULATORY COMMISSION  
WASHINGTON, D. C. 20555

May 4, 1988

Docket No. 50-425

LICENSEE: Georgia Power Company  
FACILITIES: Vogtle Unit 2  
SUBJECT: SUMMARY OF MEETING HELD MAY 4, 1988, TO DISCUSS THE STATUS OF  
VOGTLE UNIT 2

On May 4, 1988, the staff met with representatives of the Georgia Power Company at the NRC offices in Rockville, Maryland to discuss the status of Vogtle Unit 2. Participants are listed in Enclosure 1.

The agenda for the meeting is included as Enclosure 2. Enclosure 3 is the viewgraphs reviewed at the meeting. GPC stated that they are on schedule for a fuel load date of February 28, 1989.

A handwritten signature in cursive script that reads "Jon B. Hopkins".

Jon B. Hopkins, Project Manager  
Project Directorate II-3  
Division of Reactor Projects - I/II

Enclosures:  
As stated

cc:  
See next page

Georgia Power Company

Vogtle Electric Generating Plant

cc:

Mr. L. T. Gucwa  
Manager of Safety and Licensing  
Georgia Power Company  
P.O. Box 4545  
Atlanta, Georgia 30302

Resident Inspector  
Nuclear Regulatory Commission  
P. O. Box 572  
Waynesboro, Georgia 30830

Mr. Ruble A. Thomas  
Executive Consultant  
Southern Company Services, Inc.  
P. O. Box 2625  
Birmingham, Alabama 35202

Deppish Kirkland, III, Counsel  
Office of the Consumers' Utility  
Council  
Suite 225  
32 Peachtree Street, N.E.  
Atlanta, Georgia 30302

Mr. Paul D. Rice  
Vice President & Project Director  
Georgia Power Company  
Post Office Box 282  
Waynesboro, Georgia 30830

James E. Joiner  
Troutman, Sanders, Lockerman,  
& Ashmore  
1400 Candler Building  
127 Peachtree Street, N.E.  
Atlanta, Georgia 30303

Mr. J. A. Bailey  
Project Licensing Manager  
Southern Company Services, Inc.  
P.O. Box 2625  
Birmingham, Alabama 35202

Danny Feig  
1130 Alta Avenue  
Atlanta, Georgia 30307

Ernest L. Blake, Jr.  
Bruce W. Churchill, Esq.  
Shaw, Pittman, Potts and Trowbridge  
2300 N Street, N. W.  
Washington, D. C. 20037

Carol Stangler  
Georgians Against Nuclear Energy  
425 Euclid Terrace  
Atlanta, Georgia 30307

Mr. G. Bockhold, Jr.  
General Manager Nuclear Operations  
Georgia Power Company  
P. O. Box 1600  
Waynesboro, Georgia 30830

Mr. R. P. McDonald  
Executive Vice President -  
Nuclear Operations  
Georgia Power Company  
P.O. Box 4545  
Atlanta, Georgia 30302

Regional Administrator, Region II  
U.S. Nuclear Regulatory Commission  
101 Marietta Street, N.W., Suite 2900  
Atlanta, Georgia 30323

ENCLOSURE 1

ATTENDEES

VOGTLE UNIT 2 MEETING

May 4, 1988

NRC

S. Varga  
D. Matthews  
J. Hopkins

GPC

P. Rice  
C. Whitney

Southern Company Services

J. Bailey

NRC STATUS MEETING

MAY 4, 1988

AGENDA

- INTRODUCTION

ORGANIZATION

- COMPLETION STATUS

CONSTRUCTION

ENGINEERING

STARTUP

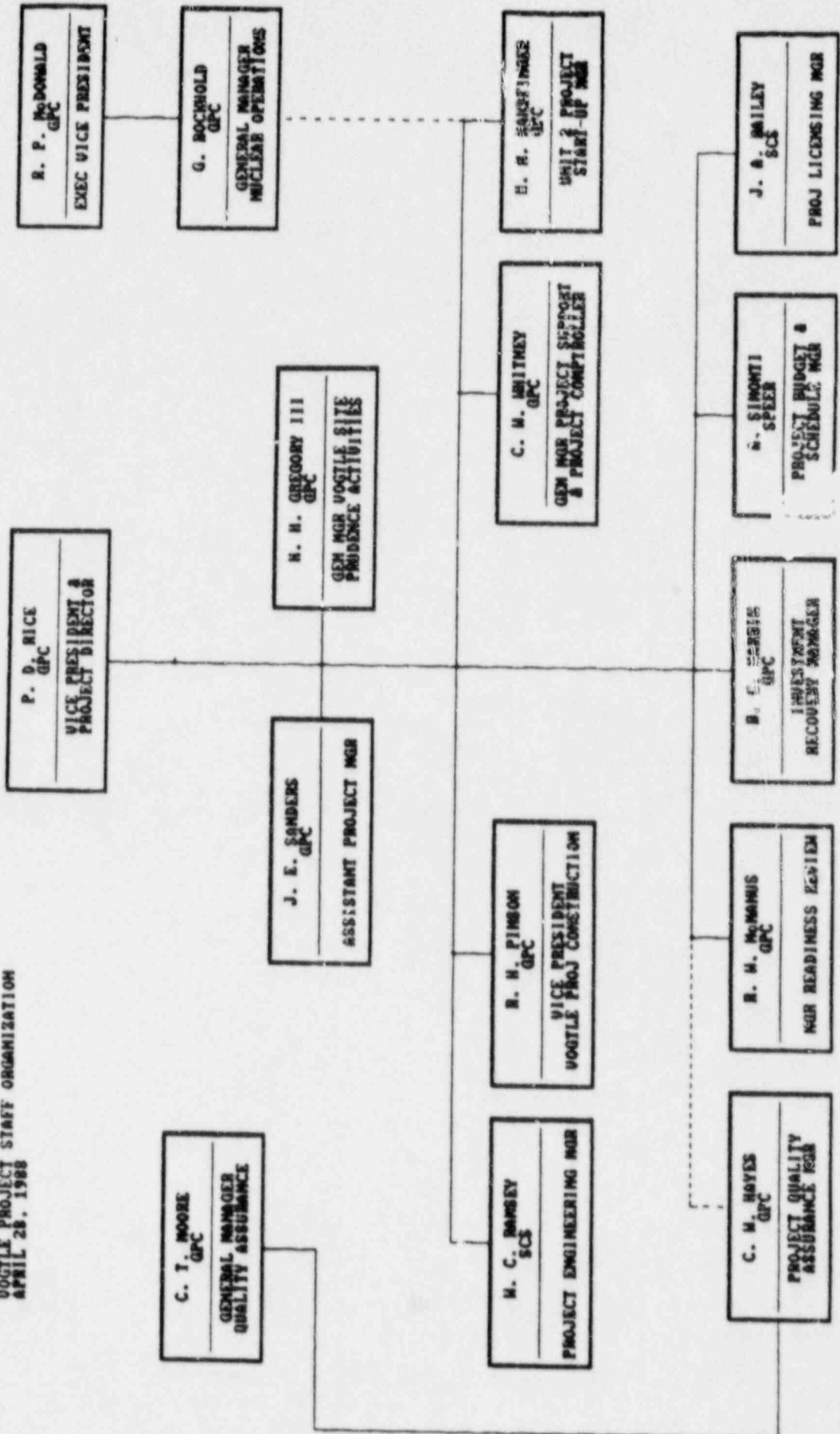
- STAFFING/OVERTIME

- VOGTLE SPECIAL PROGRAMS

- MILESTONES

PROJECT GENERAL ORGANIZATION  
VOGTLE ELECTRIC GENERATING PLANT  
UNITS 1 AND 2

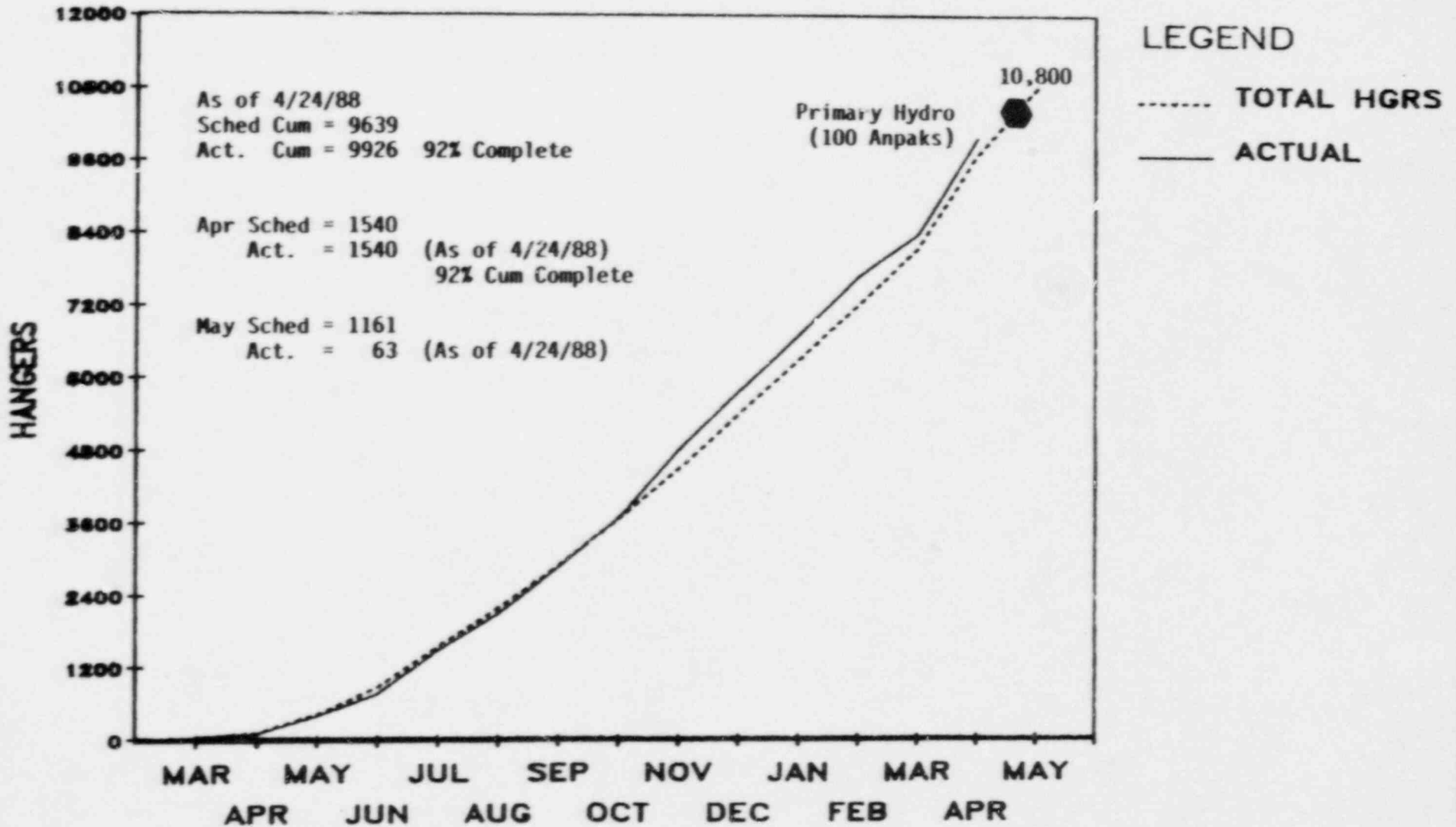
VOGTLE PROJECT STAFF ORGANIZATION  
APRIL 25, 1988



**UNIT 2 COMMODITY SUMMARY**  
**APRIL, 1988**

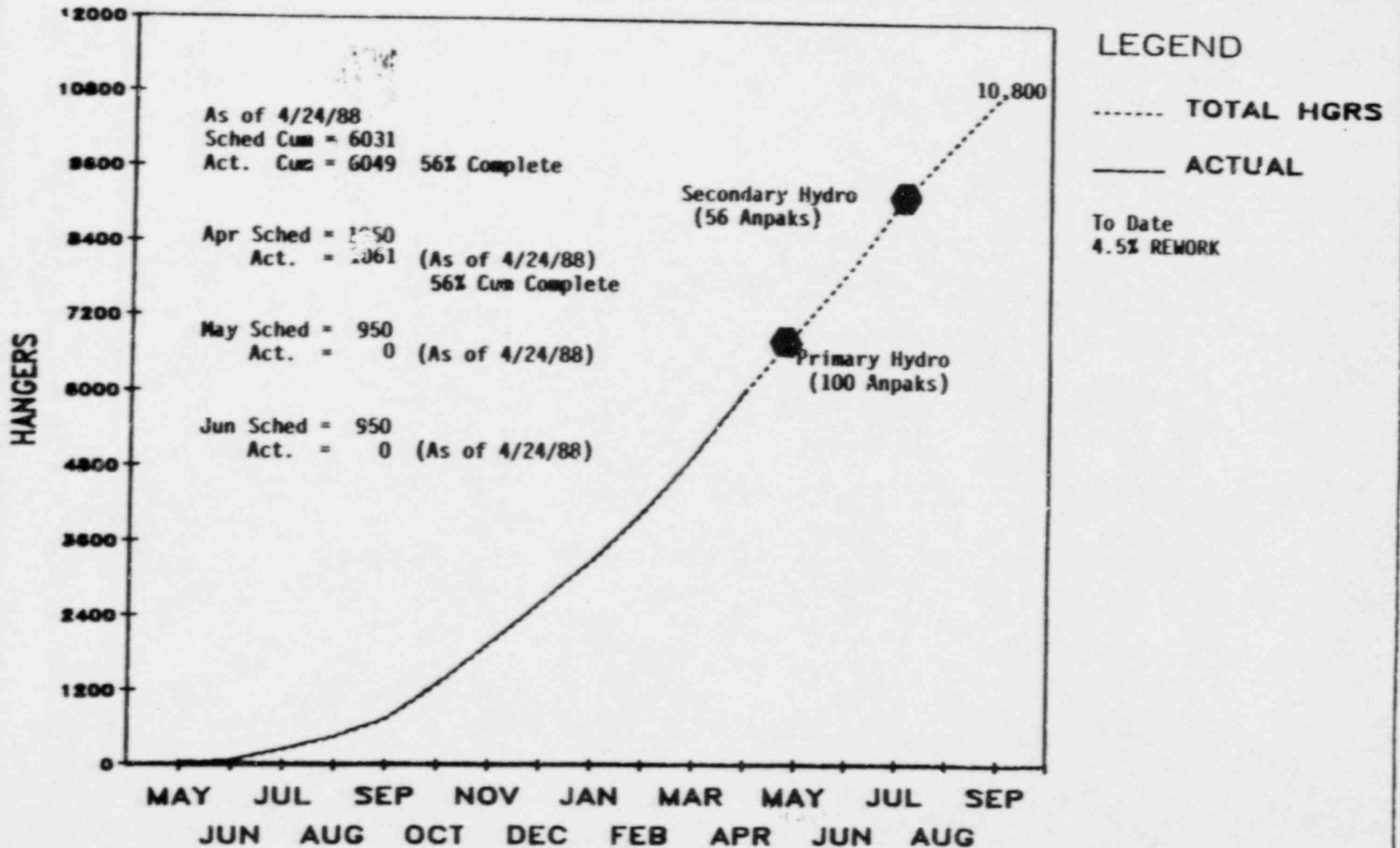
	TOTAL ESTIMATE	SCHEDULED TO-DATE	INSTALLED TO-DATE	QUANTITY TO-GO	PERCENT COMPLETE
LARGE HANGERS	13,303	13,102	13,141	162	98.8%
SMALL PIPE	184,751	183,487	184,779	0	100.0
SMALL HANGERS	21,118	18,633	18,861	2,257	89.3
TUBING	36,503	35,373	35,127	1,376	96.2
TUBING HANGERS	2,827	2,211	2,376	451	84.0
INSULATION	271,925	113,688	112,154	159,771	41.2
RIGID CONDUIT	428,205	411,248	420,232	7,973	98.1
WIRE & CABLE	6,929,869	6,299,097	6,568,225	361,644	94.8
TERMINATIONS	224,812	180,295	183,344	41,468	81.6
UNSCHED. COMMOD	438,703	333,542	362,925	75,778	82.7
PEN. SEALS	10,950	2,273	2,264	8,686	20.7
COATINGS	1,779,532	1,248,353	1,275,217	504,315	71.7

# SUPPORT SCHEDULE FOR ANALYTICAL RECEIPT PPP TO V-SAMU





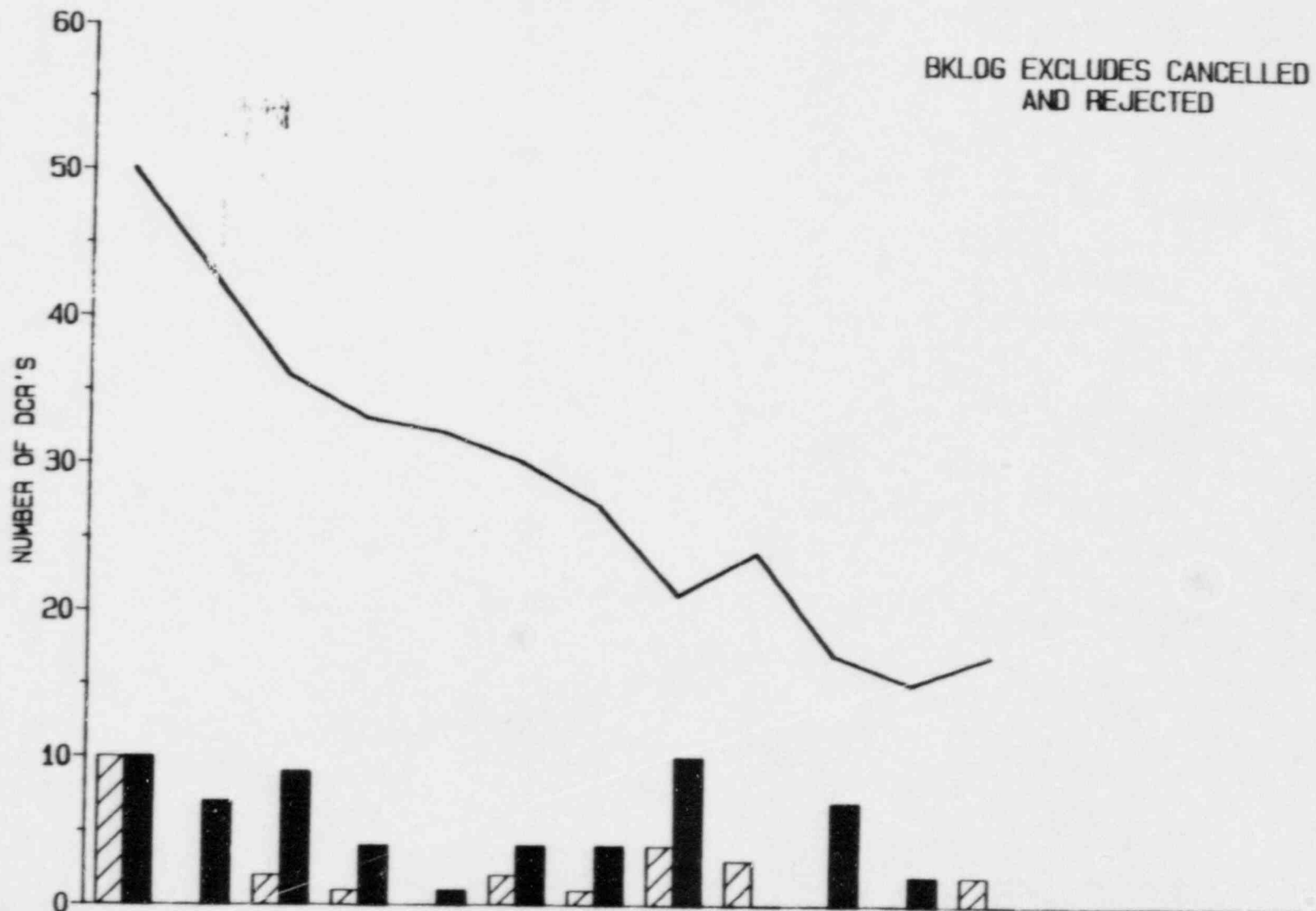
# V-SAMU SUPPORT RECONCILIATION SCHEDULE



DCRSTAT1  
 REV 0 12/22/87  
 STATUS 4/26/88

## UNIT 2 DESIGN CHANGE STATUS FROM UNIT 1 DCR'S

### UNIT 2 DCR'S TO BE DESIGNED



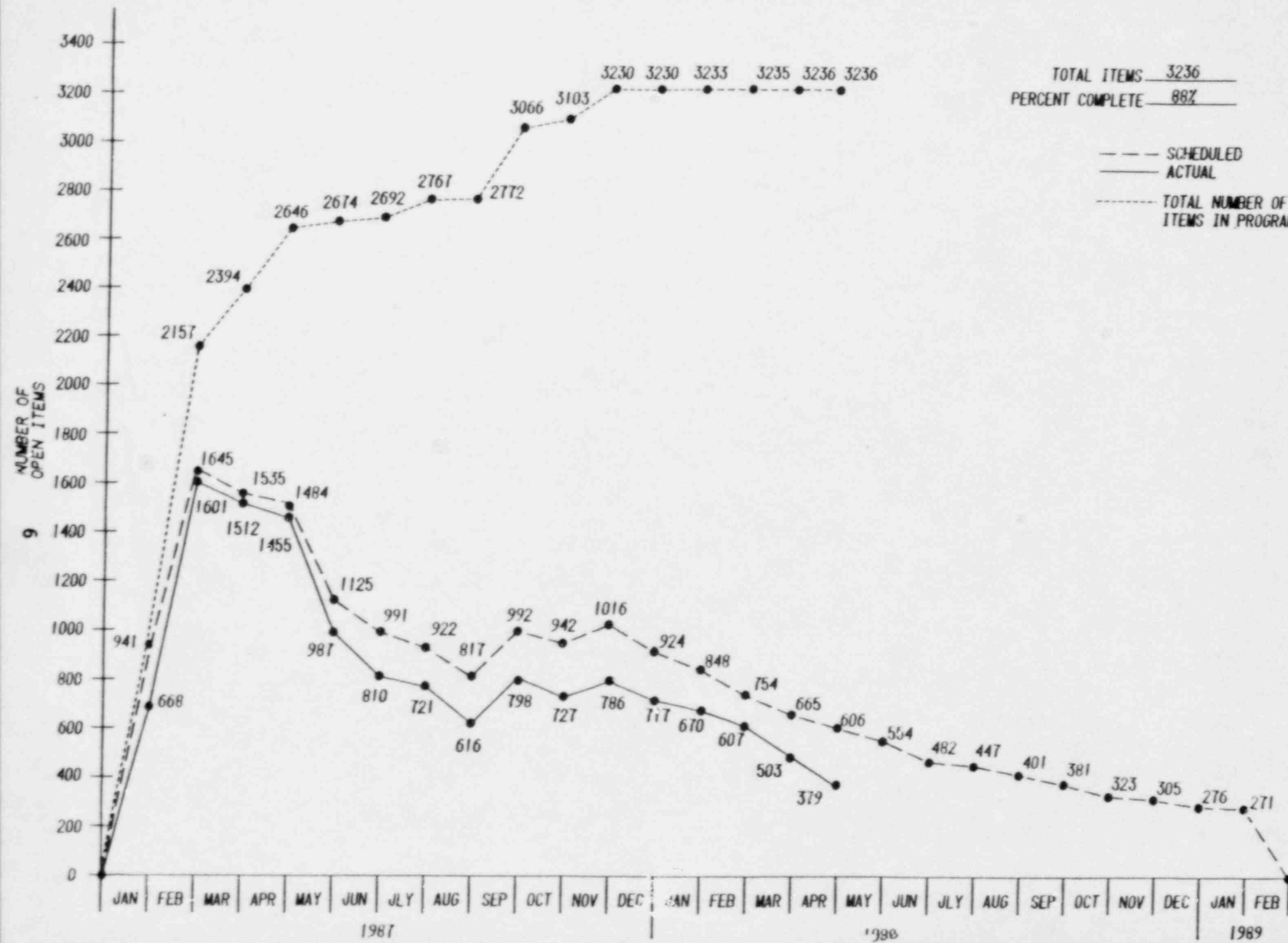
REC'D	10	0	2	1	0	2	1	4	3	0	0	2					
ISSUED	10	7	9	4	1	4	4	10	0	7	2	0					
BKLOG	50	43	36	33	32	30	27	21	24	17	15	17					
WEEK ENDING	2/7	2/14	2/21	2/28	3/6	3/13	3/20	3/27	4/3	4/10	4/17	4/24	5/1	5/8	5/15	5/22	5/29

5

# LESSONS LEARNED TOTAL PROGRAM

TOTAL ITEMS 3236  
 PERCENT COMPLETE 88%

--- SCHEDULED  
 — ACTUAL  
 - - - - - TOTAL NUMBER OF  
 ITEMS IN PROGRAM



# GEORGIA POWER COMPANY - PLANT VOGTLE UNIT 2

## 88-0 SUBSYSTEM RELEASE FOR TEST ACCEPTANCE DATES

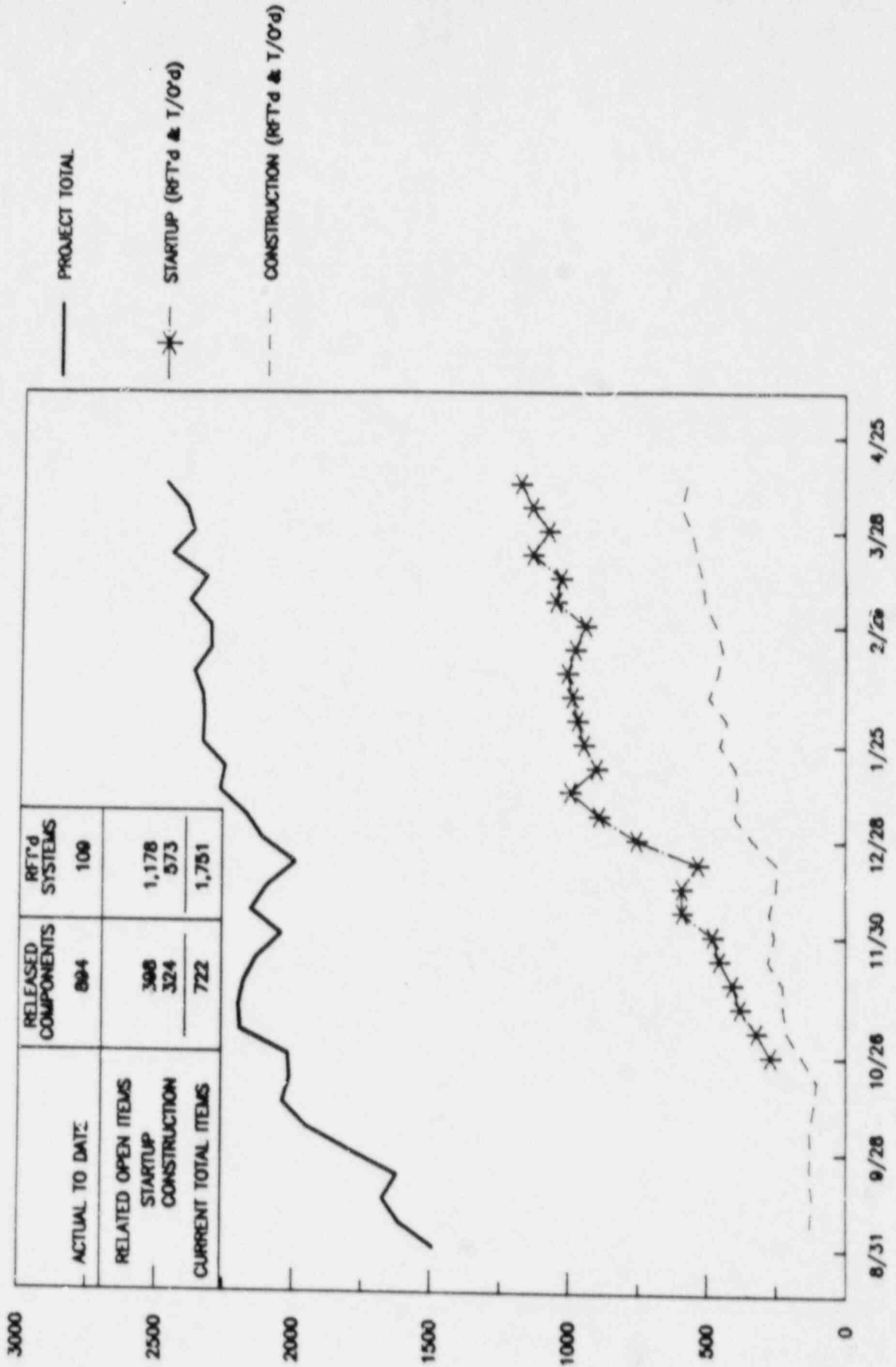
DATES REFLECT PROJECT MONTH

STATUS AS OF 04/24/88

	86	1987						1988																									
	SEP	JUL	AUG	SEP	OCT	NOV	DEC	JAN	FEB	MAR	APR	MAY	JUN	JUL	AUG	SEP	OCT	NOV	DEC														
25																																	
24																																	
23																																	
22															AN01		GK08		GA00														
21															GK02	EF05	KC12		<del>GY00</del>														
20															GL03	GE01	LC00		HB05														
19															GS00	GK07	LD01		KA02														
18															HB02	KC05	LD03	DE00	KA05														
17															HB03	KC06	LD04	KA03	KA08														
16															AB01	AG00	AC00	HB04	KC11	LD05	KA06	KB02											
15															AB02	CA00	AE00	HB05	KG05	<del>QA01</del>	KB03	KB04											
14															AB03	CB00	AK00	HG00	KN00	QA02	KE01	KB05											
13															AB01	CC00	AF00	AN02	QA03	QB01	QA04	LD06	KC14										
12															KJ03	BJ01	BB01	CB00	AG00	BG04	QB02	QB03	QA05	LF02	KD02								
11															KJ04	EF02	BB02	CG00	EF03	BM01	BM02	QC00	QJ03	QA06	LG00	KD05							
10															MC00	EG02	BB03	BB03	DB00	EF04	CE00	CF00	QD02	QJ05	QA07	NH03	KF01						
9															MD00	GJ01	BJ02	BL01	GK01	GD00	GK06	CH00	QF01	QJ06	QJ12	QA08	KF03						
8															NA00	GJ02	BJ03	BL02	GK03	GE02	GN00	GL04	QF03	QJ07	QJ13	QJ04	KF04						
7															NB00	GM01	BK00	DA00	GK05	GL01	HB01	GR00	QJ10	QJ08	QJ14	QJ18	KF05						
6															PB00	GM02	BN00	EG00	GL02	KE02	<del>KH00</del>	GT00	SD01	QJ09	QJ15	QJ19	KF06						
5															PE00	AN03	PG00	KA01	EA00	FB00	GG00	MA00	NH04	HA00	SD02	QJ11	QJ16	QJ23	LD02				
4															PK01	KG02	NH01	JE01	BJ02	BB01	KB01	EB00	FC00	HC00	MB00	<del>QB04</del>	QJ01	SE02	QJ22	QJ17	QJ24	LE00	
3															NK01	PK02	NG00	NH02	KF02	SC02	ED00	KC08	EF01	GB00	KC03	RC00	<del>QB01</del>	RP01	SF01	GK00	QJ20	QJ25	LH00
2															NK02	QG00	NN01	NN02	LF01	SC04	EG01	QP05	GB00	HE00	RB01	SA00	SC06	RP02	SF02	SE01	QJ21	S600	QE00
1															NK03	BK00	PH02	PG00	SC01	SC05	KJ02	SC05	BJ01	BG02	SC07	SB00	SC08	SH00	SQ00	SJ00	SD03	SK00	RD00

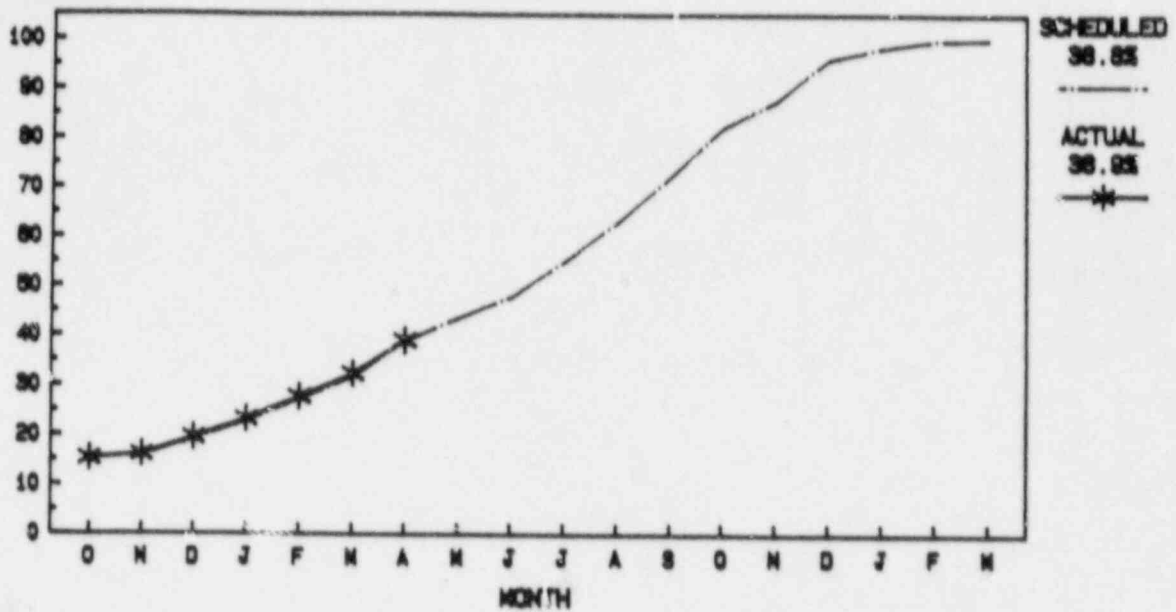
# OPEN ITEMS ON RELEASED SYSTEMS/COMPONENTS

OPEN ITEMS



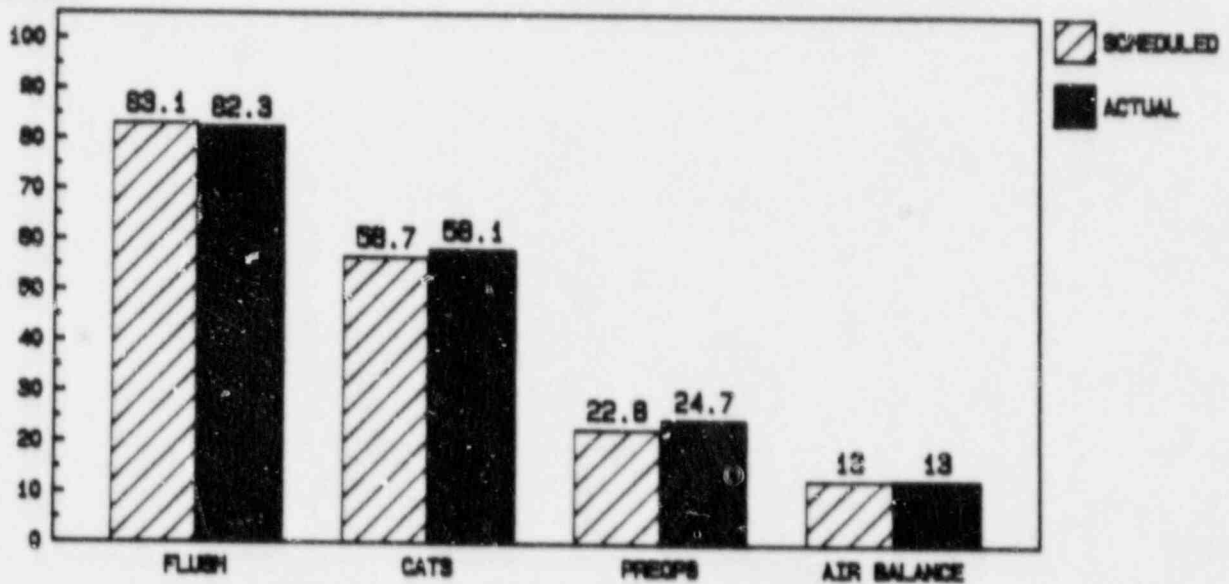
## INITIAL TEST PROGRAM UNIT 2 - CUMULATIVE STATUS

PERCENT COMPLETE



## INITIAL TEST PROGRAM - MAJOR COMPONENTS UNIT 2 - CUMULATIVE STATUS

PERCENT

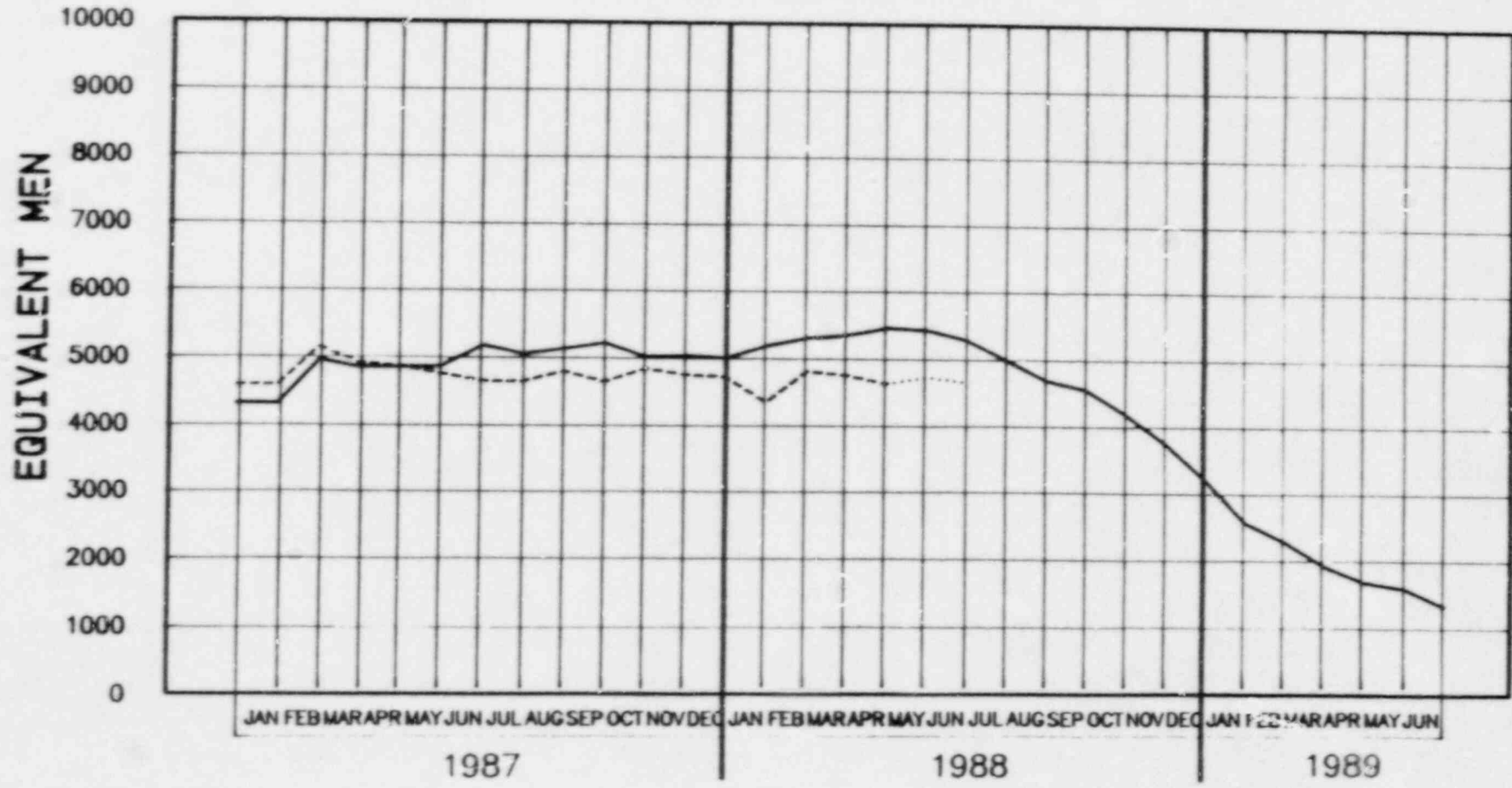


STATUS 04/24/88

# PLANT VOGTLE UNIT - 2 TOTAL PROJECT STAFFING 88-0 BUDGET

87-1/87-1.1/88-0	AS10	AS09	AS01	AS07	AS09	8106	8003	8130	8228	8228	8038	8000	8189	8310	8308	8489	8430	8284	8882	8888	8048	4178	3743	3189	2882	2281	1920	1882	1883	1334	
ACT / A.C.F.	AS09	8183	AS19	AS09	4758	AS47	AS47	4798	AS42	AS41	4748	4712	AS48	AS03	4747	AS27	4721	AS48													
VARIANCE	274	184	8	3	(113)	(328)	(408)	(328)	(284)	(188)	(288)	(280)	(843)	(827)	(828)	(841)	(714)	(838)													

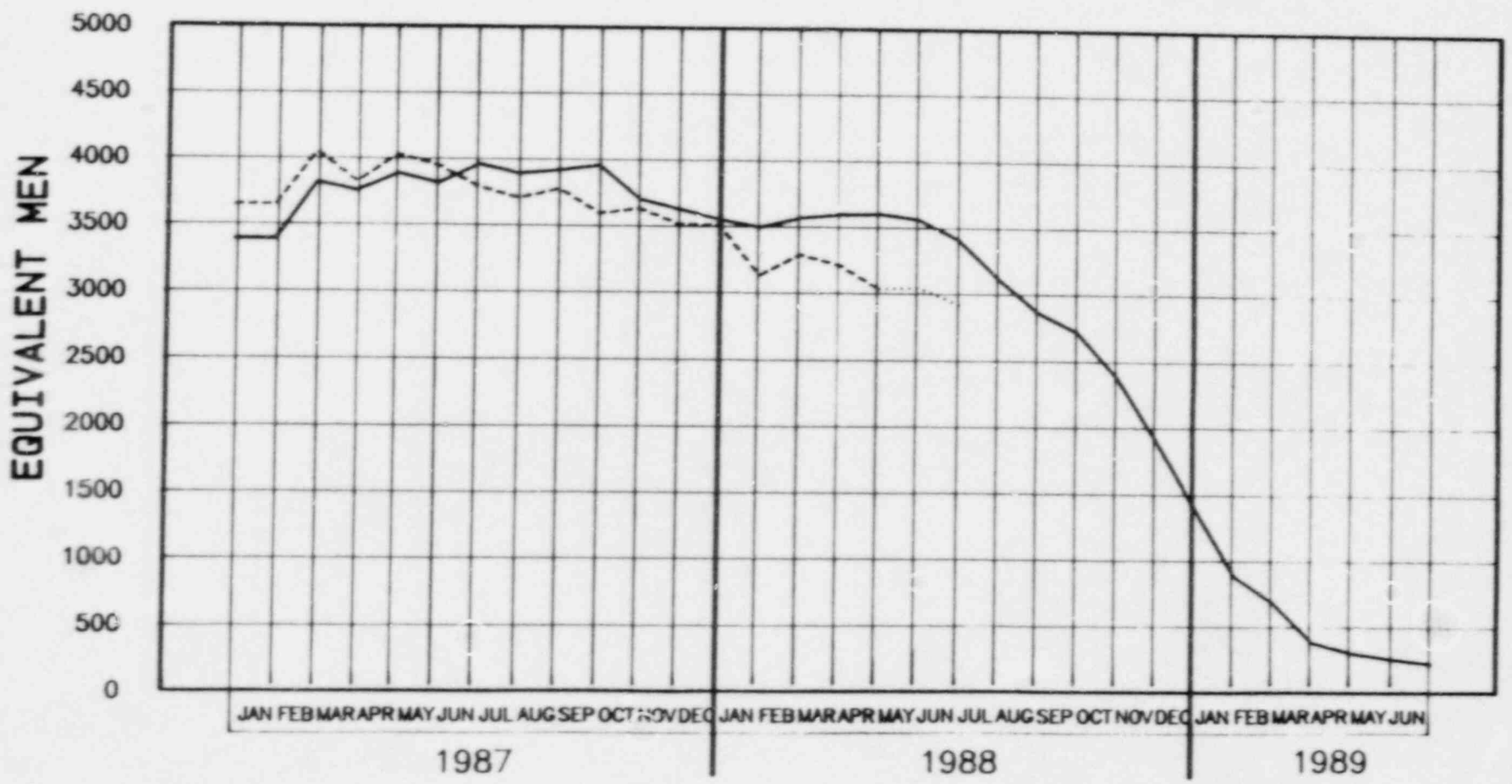
10





# PLANT VOGTLE UNIT - 2 TOTAL CONSTRUCTION STAFFING 88-0 BUDGET

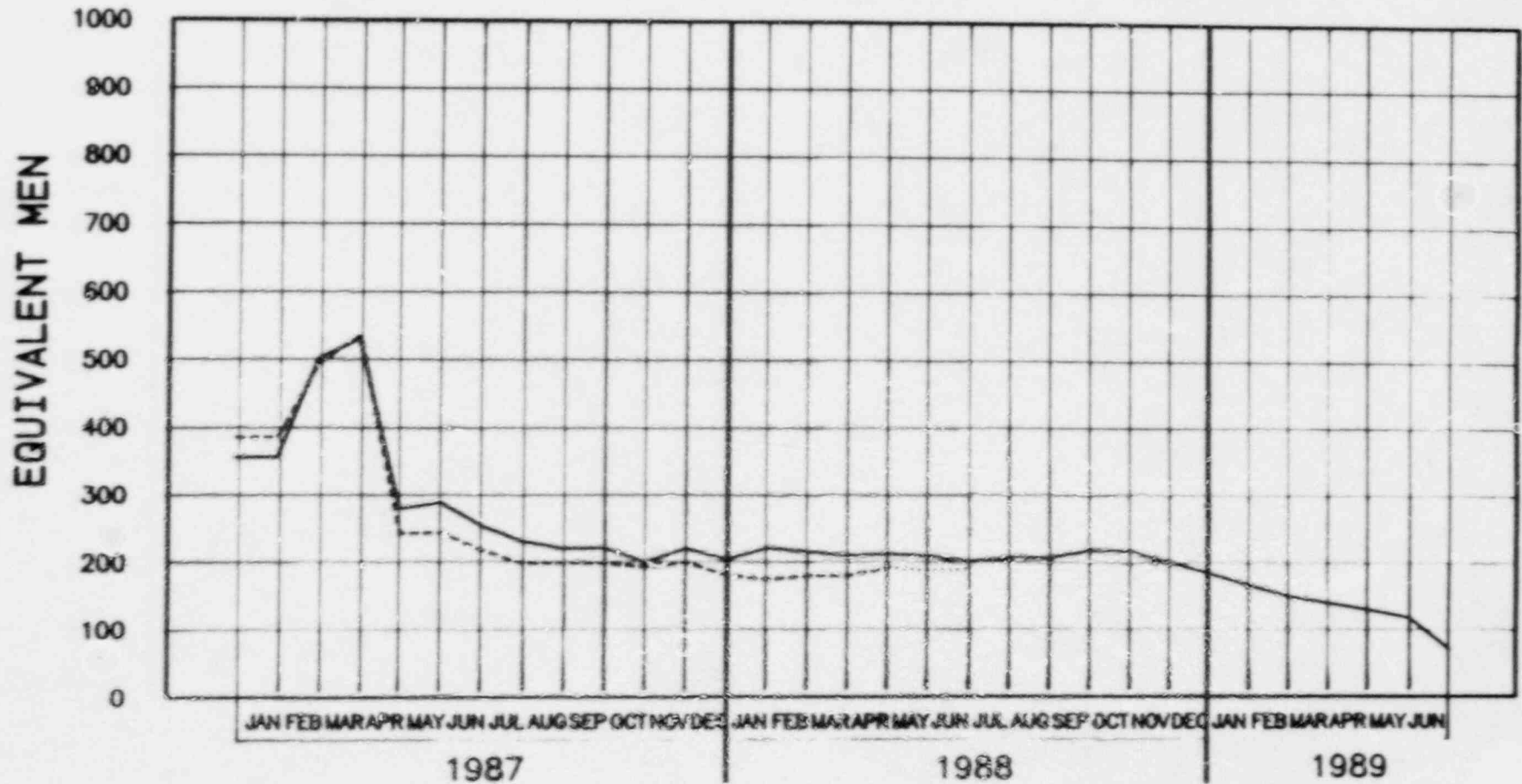
87-1/87-1.1/88-0	3360	3316	3763	3887	3613	3659	3687	3617	3604	3688	3621	3647	3462	3683	3627	3686	3653	3408	5118	3888	2720	2378	1608	1360	887	888	320	323	288	277	
ACT / A.C.F.	3648	4048	3820	4028	3844	3783	3888	3775	3688	3624	3658	3602	3126	3288	3228	3233	3041	2813													
VARIANCE	288	732	67	141	231	(178)	(188)	(147)	(684)	(72)	(112)	(45)	(285)	(378)	(387)	(652)	(612)	(785)													





# PLANT VOGTLE UNIT - 2 CORE ENGINEERING STAFFING 88-0 BUDGET

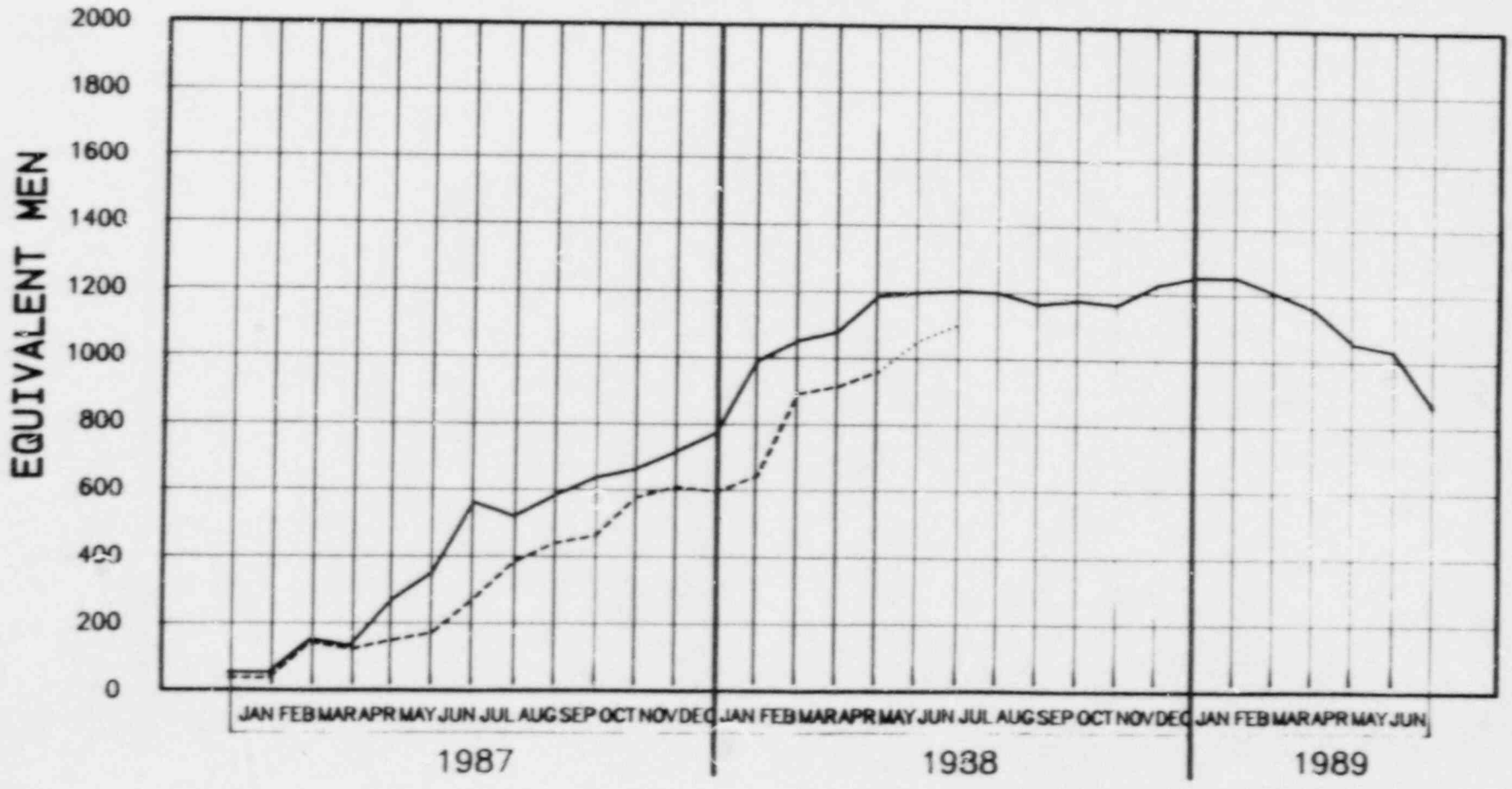
87-1/87-1.1/88-0	30	32	31	29	28	24	21	21	22	20	21	20	22	21	21	21	21	20	20	20	20	21	21	20	19	17	16	16	15	14	13	11	7
ACT / A.C.F.	35	44	52	34	24	21	19	19	19	14	20	18	17	18	18	18	18	18	18	18													
VARIANCE	5	12	21	5	4	0	-2	0	0	-6	9	-2	-5	0	0	0	0	0	0	0	0	0	0	0	0	0	0	0	0	0	0	0	



# PLANT VOGTLE UNIT - 2 TOTAL START-UP STAFFING 88-0 BUDGET

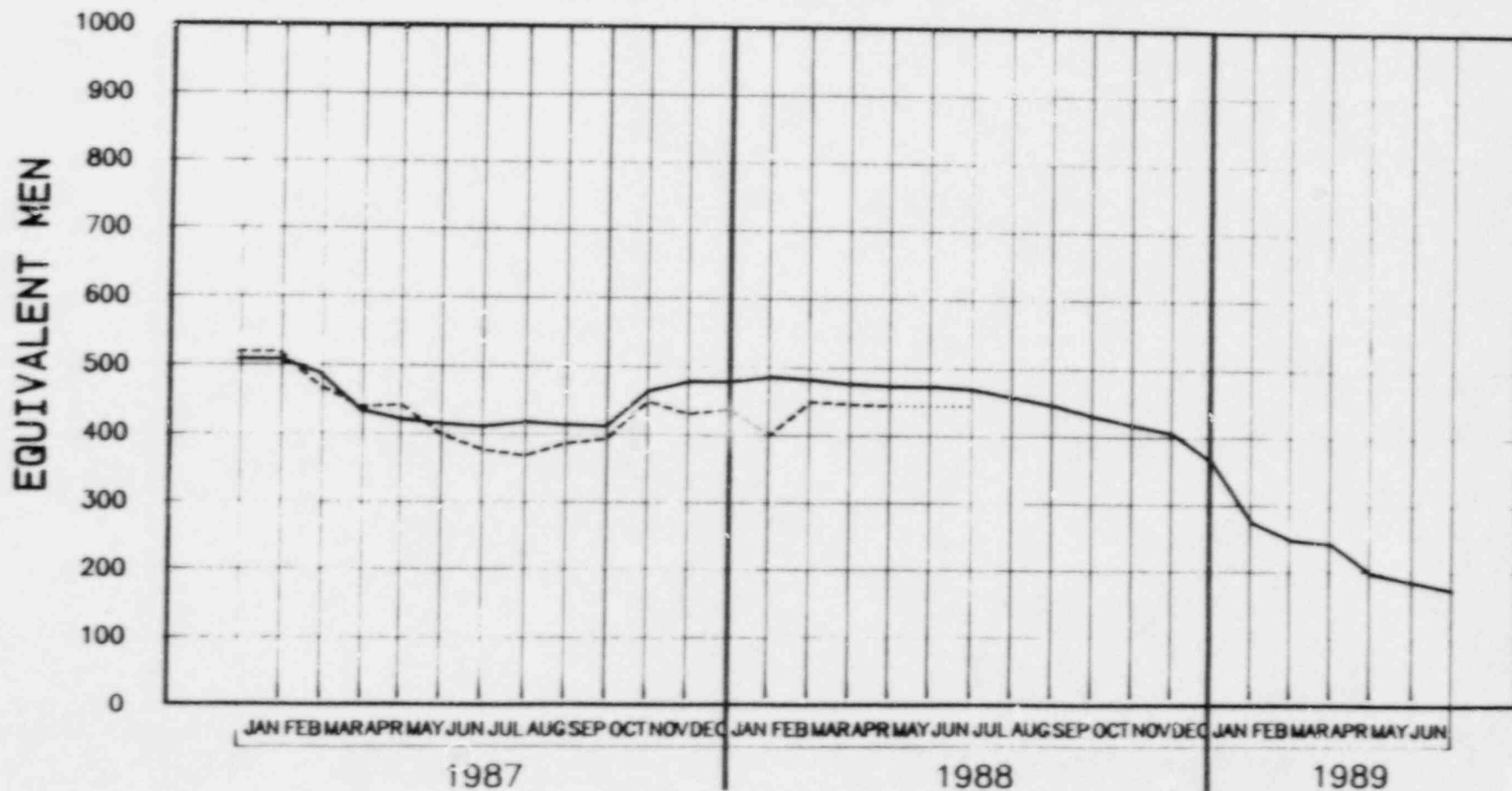
87-1/87-1.1/88-0	87	183	133	388	383	502	520	583	638	688	718	775	880	1001	1080	1188	1200	1208	1201	1188	1178	1167	1228	1253	1253	1207	1188	1083	1031	884
ACT / A.C.F.	9	143	121	148	170	270	382	441	523	578	610	680	843	888	912	908	1080	1100												
VARIANCE	(18)	(16)	(12)	(131)	(150)	(98)	(138)	(140)	(178)	(88)	(108)	(188)	(247)	(188)	(168)	(200)	(180)	(108)												

13



# PLANT VOGTLE UNIT - 2 TOTAL BOP STAFFING 88-0 BUDGET

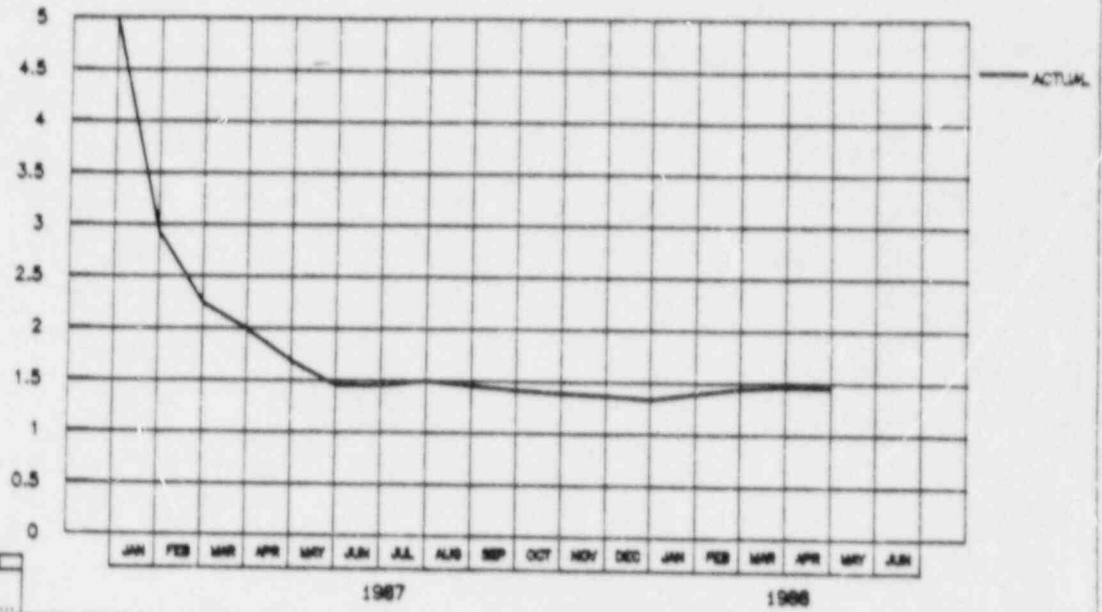
87-1/87-1.1/88-0	809	808	834	821	818	811	818	814	812	804	878	878	888	881	875	873	873	868	867	844	830	817	808	804	775	748	742	717	700	773	
ACT / A.C.F.	819	808	834	841	808	878	808	808	802	808	830	827	808	848	840	842	842	842													
VARIANCE	10	(20)	0	20	(17)	(20)	(20)	(20)	(18)	(18)	(48)	(41)	(80)	(33)	(30)	(28)	(28)	(28)													



PLANT VOGTLE - UNIT 2  
 TOTAL PROJECT - OVERTIME RATE  
 CUMULATIVE RATE

ACTUALS

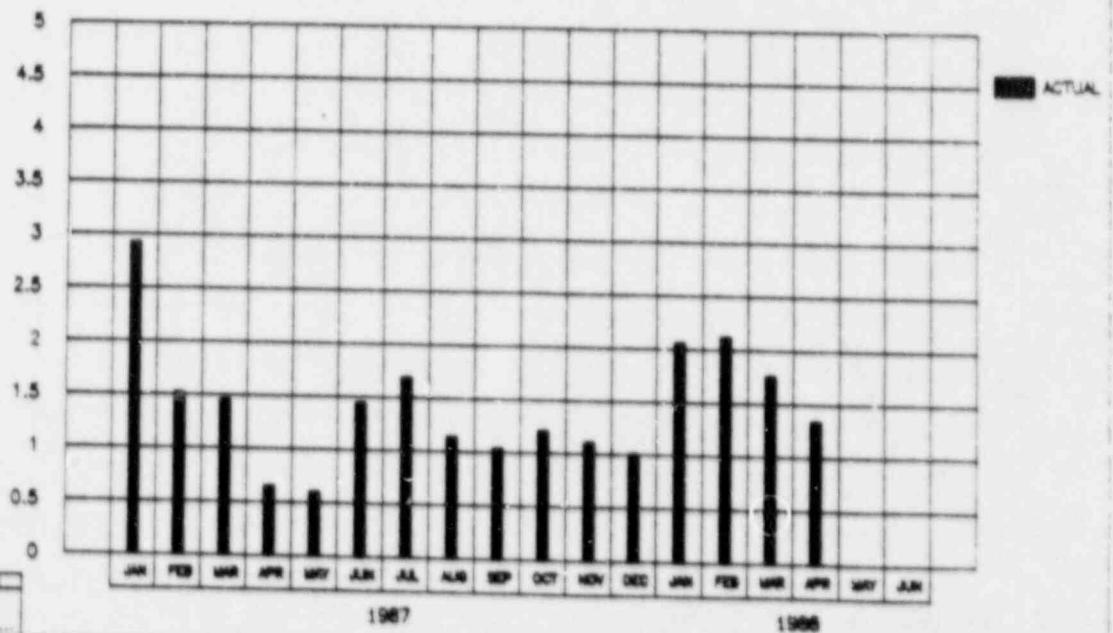
2.93	2.24	1.99	1.68	1.45	1.45	1.49	1.45	1.41	1.38	1.36	1.33	1.39	1.44	1.46	1.45	
------	------	------	------	------	------	------	------	------	------	------	------	------	------	------	------	--



PLANT VOGTLE - UNIT 2  
 TOTAL PROJECT - OVERTIME RATE  
 MONTHLY RATE

ACTUALS

2.93	1.52	1.46	0.66	0.60	1.48	1.66	1.14	1.04	1.21	1.11	1.01	2.06	2.12	1.78	1.34	
------	------	------	------	------	------	------	------	------	------	------	------	------	------	------	------	--



# VOGTLE SPECIAL PROGRAMS

- **QUALITY ASSURANCE**
- **READINESS REVIEW**
- **QUALITY CONCERN PROGRAM**
- **ANTI-DRUG PROGRAM**
- **SECURITY**
- **SAFETY PROGRAM**
- **LICENSING**

# UNIT 2 READINESS REVIEW STATUS

22 APRIL 88

MODULE	SCOPE AND ASSESSMENT	ASSESSMENT	COMMITMENT IMP.	UNIT 1 FINDINGS IMP.	UNIT 2 FINDINGS RESOLVED	BOARD APPROVAL	MODULE COMPLETION	ISSUE TO NRC	NRC INSPECTION
03A INITIAL TEST									
- PHASE 1	NA								
- PHASE 2	NA			NA				06/13/88	
- PHASE 3	NA			NA				12/12/88	
04 PIPING									
06 ELECTRICAL EQUIPMENT									
11 PIPE SUPPORTS									
12 CABLES AND TERMINATIONS								08/03/88	
13B COATINGS								08/03/88	
17/19 RACEWAYS & SUPPORTS									
18A HVAC									
20 I & C								08/02/88	
23 SECURITY									
- PHASE 1	NA			NA					
- PHASE 2	NA							08/15/88	
- PHASE 3	NA							12/05/88	
F INSP.DUAL									

ACTIVITY COMPLETE  
 ACTIVITY IN-PROCESS

QUALITY CONCERN PROGRAM

STATUS REPORT

APRIL 28, 1988

	MONTH (APR) -----	YEAR TO DATE (1988) -----	TOTAL PROGRAM -----
QUALITY CONCERNS			
RECEIVED	13	53	1466
INVESTIGATION COMPLETE	3	40	1452
UNDER INVESTIGATION	10	13	14
ANONYMOUS	2	8	208
PROTECTED ACTIVITY CONCERNS			
RECEIVED	0	3	107
INVESTIGATION COMPLETE	0	3	107
UNDER INVESTIGATION	0	0	0
NON QUALITY CONCERNS	11	42	1164

KNOWN SUBMITTER FEEDBACK FOR 1988 IS 67% WITH 100%  
SATISFIED SIGNOFFS AND 0% DISSATISFIED SIGNOFFS.

KNOWN SUBMITTER FEEDBACK FOR THE PROGRAM TO DATE IS 56% WITH  
90% SATISFIED SIGNOFFS AND 10% DISSATISFIED SIGNOFFS.

NOTE: AS OF APRIL 1, 1987, FIGURES DO NOT  
INCLUDE UNIT 1 CONCERNS.

DEAN HARLESS  
EXT. 7930



UNIT 2 LICENSING ITEMS UNDER REVIEW

LETTER NO.	TOPIC	DATE
GN-1411	PRESERVICE INSPECTION PROGRAM	11-04-87
GN-1415	FSAR AMENDMENT 34 - INFORMATION ON COMMUNICATION SYSTEMS	11-23-87
GN-1416	EQUIPMENT QUALIFICATION WCAPS ON NSSS - UNIT 1	12-07-87
GN-1419	FSAR AMENDMENT 34 - INFORMATION ON EMERGENCY LIGHTING	12-21-87
GN-1422	SPENT FUEL RACKS (CRITICALITY AND SEISMIC)	12-23-87
SL-3938	GENERIC LETTER 83-28 ITEM 2.2.2	01-05-88
GN-1423	DRAFT TECH SPECS	01-15-88
GN-1426	SNM LICENSE APPLICATION	01-22-88
GN-1427	CONTROL ROOM SAFE & ALTERNATE SHUTDOWN CAPABILITY	01-25-88
SL-4149	STEAM GENERATOR TUBE RUPTURE	02-29-88
GN-1434	ELECTRICAL SEPARATION CRITERIA (R.G. 1.75)	03-14-88
SL-4413	GENERIC LETTER 83-28 ITEM 2.2.1	03-28-88
GN-1440	FSAR AMENDMENT 35	03-30-88
GN-1442	INSERVICE TESTING OF PUMPS AND VALVES	03-25-88
GN-1443	ENVIRONMENTAL PROTECTION PLAN	04-05-88
GN-1441	SPENT FUEL RACKS (THERMAL HYDRAULICS)	04-20-88



## FUTURE SUBMITTALS

- EQUIPMENT QUALIFICATION REPORTS
- FIRE PROTECTION HAZARDS ANALYSIS
- WASTE EVAPORATOR/RADWASTE ENHANCEMENTS
- CONTROL ROOM HYAC
- NEW CALCULATIONS FOR NSCW
- FSAR CHAPTER 13, 14, 17 CHANGES
- OUTSTANDING OPEN AND CONFIRMATORY ITEMS
- AMSAC - 10CFR50.62
- INDIVIDUAL PLANT EXAMINATION - GENERIC LETTER
- REALISTIC DISPERSION MODEL FOR ODCM
- STATION BLACKOUT - UNRESOLVED SAFETY ISSUE
- SECURITY PLAN CHANGES
- EMERGENCY PLAN CHANGES

## UNIT 2 PROJECT MILESTONES

	<u>Scheduled</u>
Primary Hydro	05/19/88
Turbine On Turning Gear	06/18/88
Secondary Hydro	07/12/88
Start Fuel Receipt	10/03/88
Start HFT	10/12/88
SIT/ILRT	12/11/88
ESFAS	01/07/89
Fuel Load	02/28/89
Initial Criticality	04/10/89
Full Power Operating License	04/17/89

DISTRIBUTION FOR MEETING SUMMARY DATED: May 4, 1988

Facility: Vogtle Electrical Generating Plant, Unit 2\*

**Docket File**

NRC PDR  
Local PDR  
PDII-3 Reading  
Vogtle Reading  
D. Matthews  
M. Rood  
J. Hopkins  
OGC-WF  
E. Jordan  
J. Partlow  
ACRS (10)

\*Copies sent to persons on facility service list