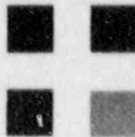


# THE WASHINGTON HOSPITAL CENTER



February 8, 1988

U.S. Nuclear Regulatory Commission  
Region I  
457 Allendale Road  
King of Prussia, Pa. 19406

Re: License number 08-03604-03

Gentlemen:

This letter is in reference to a NRC inspection at the Washington Hospital Center (WHC) conducted on September 30 and October 1, 1987. Currently, WHC operates under a broad specific license encompassing an on-site radiopharmacy with distribution to an additional three local licensees.

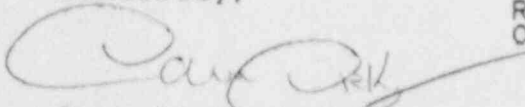
At the time of the inspection, the inspector questioned our procedures for surveying packages delivered from the in house radiopharmacy to the nuclear medicine hot laboratory and the packages returned to the radiopharmacy from the hot lab. It is our opinion that the responsibility for performing the surveys be placed in the department which originates the so called "shipment" i.e., in the first case the radiopharmacy and in the second case the hot lab. We do not believe packages should be surveyed more than the one time since they are hand carried between departments, at a distance of no more than 100 feet. Pending your written approval, packages containing radioactive material that are transferred from the radiopharmacy to the WHC hot lab will be surveyed for contamination and monitored for excessive radiation levels prior to leaving the radiopharmacy. Packages containing unused radiopharmaceuticals or waste that is transferred from the WHC hot lab to the in house radiopharmacy will be monitored for radiation levels prior to leaving the hot lab.

Your timely response in this matter will be deeply appreciated since the current procedure for redundant monitoring poses a significant work burden on WHC staff.

If you have any questions or comments regarding this matter please do not hesitate to contact the undersigned at (202) 877-5631.

Sincerely,

8807200354 880707  
REG1 LIC30  
08-03604-03 PNU

  
Dave Dickey  
Radiation Safety Officer

cc: Juliana Simmons, M.D., Chairman Radiation Safety Committee