

December 6, 1996

Virginia Electric and Power Company
ATTN: Mr. J. P. O'Hanlon
Senior Vice President - Nuclear
Innsbrook Technical Center
5000 Dominion Boulevard
Glen Allen, VA 23060

SUBJECT: MEETING SUMMARY - SYSTEMATIC ASSESSMENT OF LICENSEE PERFORMANCE
SURRY DOCKET NOS. 50-280, 50-281

Dear Mr. O'Hanlon:

This refers to the November 18, 1996, meeting held to discuss the NRC's Systematic Assessment of Licensee Performance (SALP) for your Surry facility. Our report, 50-280/96-99 and 50-281/96-99, dated November 8, 1996, had been previously sent to you. Enclosure 1 contains a list of attendees and Enclosure 2 contains a copy of the SALP slides that were used at the presentation.

In accordance with Section 2.790(a) of the NRC's "Rules of Practice," Part 2, Title 10, Code of Federal Regulations, a copy of this letter and its enclosures will be placed in the NRC Public Document Room.

No reply to this letter is required; however, if you have any questions concerning this matter, please contact us.

Sincerely,

Original signed by George A. Belisle

George A. Belisle, Chief
Reactor Projects Branch 5
Division of Reactor Projects

Docket Nos. 50-280, 50-281
License Nos. DRP-32, DRP-37

Enclosures: 1. List of Attendees
2. SALP Slides

cc w/encls: (See page 2)

9612170372 961206
PDR ADOCK 05000280
G PDR

11
1645

cc w/encls:

M. L. Bowling, Manager
Nuclear Licensing & Operations Support
Virginia Electric & Power Company
Innsbrook Technical Center
5000 Dominion Boulevard
Glen Allen, VA 23060

David A. Christian, Manager
Surry Power Station
Virginia Electric & Power Company
5570 Hog Island Road
Surry, VA 23883

W. R. Matthews, Manager
North Anna Power Station
P. O. Box 402
Mineral, VA 23117

Ray D. Peace, Chairman
Surry County Board of Supervisors
P. O. Box 130
Dendron, VA 23839

Dr. W. T. Lough
Virginia State Corporation Commission
Division of Energy Regulation
P. O. Box 1197
Richmond, VA 23209

Michael W. Maupin
Hunton and Williams
Riverfront Plaza, East Tower
951 E. Byrd Street
Richmond, VA 23219

Robert B. Strobe, M.D., M.P.H.
State Health Commissioner
Office of the Commissioner
Virginia Department of Health
P. O. Box 2448
Richmond, VA 23218

Attorney General
Supreme Court Building
900 East Main Street
Richmond, VA 23219


Distribution w/encls: See page 3

Distribution w/encls:

L. Garner, RII
 G. Edison, NRR
 R. Gibbs, RII
 P. Fillion, RII
 D. Jones, RII
 W. Stansberry, RII
 C. Payne, RII
 PUBLIC

NRC Resident Inspector
 U.S. Nuclear Regulatory Commission
 Surry Nuclear Power Station
 5850 Hog Island Road
 Surry, VA 23883

NRC Resident Inspector
 U.S. Nuclear Regulatory Commission
 1024 Haley Drive
 Mineral, VA 23117

OFFICE	RII:DRP					
SIGNATURE						
NAME	L. Garner					
DATE	12 / 10 / 96	12 / / 96	12 / / 96	12 / / 96	12 / / 96	12 / / 96
COPY?	YES NO	YES NO	YES NO	YES NO	YES NO	YES NO

OFFICIAL RECORD COPY DOCUMENT NAME: G:\MTSUMMY.SUR

LIST OF ATTENDEES

NRC Attendees:

S. D. Ebnetter, Regional Administrator, Region II (RII)
J. R. Johnson, Acting Director, Division of Reactor Projects (DRP), RII
F. M. Reinhart, Acting Director, Project Directorate II-1, Office of Nuclear
Reactor Regulation (NRR)
G. E. Edison, Senior Project Manager, Project Directorate II-1, NRR
G. A. Belisle, Chief, Reactor Projects Branch 5, DRP, RII
R. A. Musser, Senior Resident Inspector, Surry Power Station
W. K. Poertner, Resident Inspector, Surry Power Station

Licensee Attendees:

J. T. Rhodes, President and Chief Executive Officer, Virginia Power
J. P. O'Hanlon, Senior Vice President, Nuclear
M. R. Kansler, Vice President, Nuclear Operations
R. F. Saunders, Vice President, Nuclear Engineering and Services
D. A. Christian, Station Manager, Surry Power Station (SPS)
J. H. McCarthy, Assistant Station Manager, Operations and Maintenance, SPS
B. L. Shriver, Assistant Station Manager, Nuclear Safety and Licensing, SPS
W. R. Matthews, Station Manager, North Anna Power Station

Other Attendees:

J. F. Betts, Management Consultant
W. T. Roos, President, Penn Luggage Inc.
H. L. Lindsay, Jr., Chairman and Chief Executive Officer, Harvey Lindsay
Commerical Real Estate

In addition, there were numerous Surry personnel.

**UNITED STATES NUCLEAR
REGULATORY COMMISSION**



**SYSTEMATIC ASSESSMENT OF
LICENSEE PERFORMANCE
(SALP)**

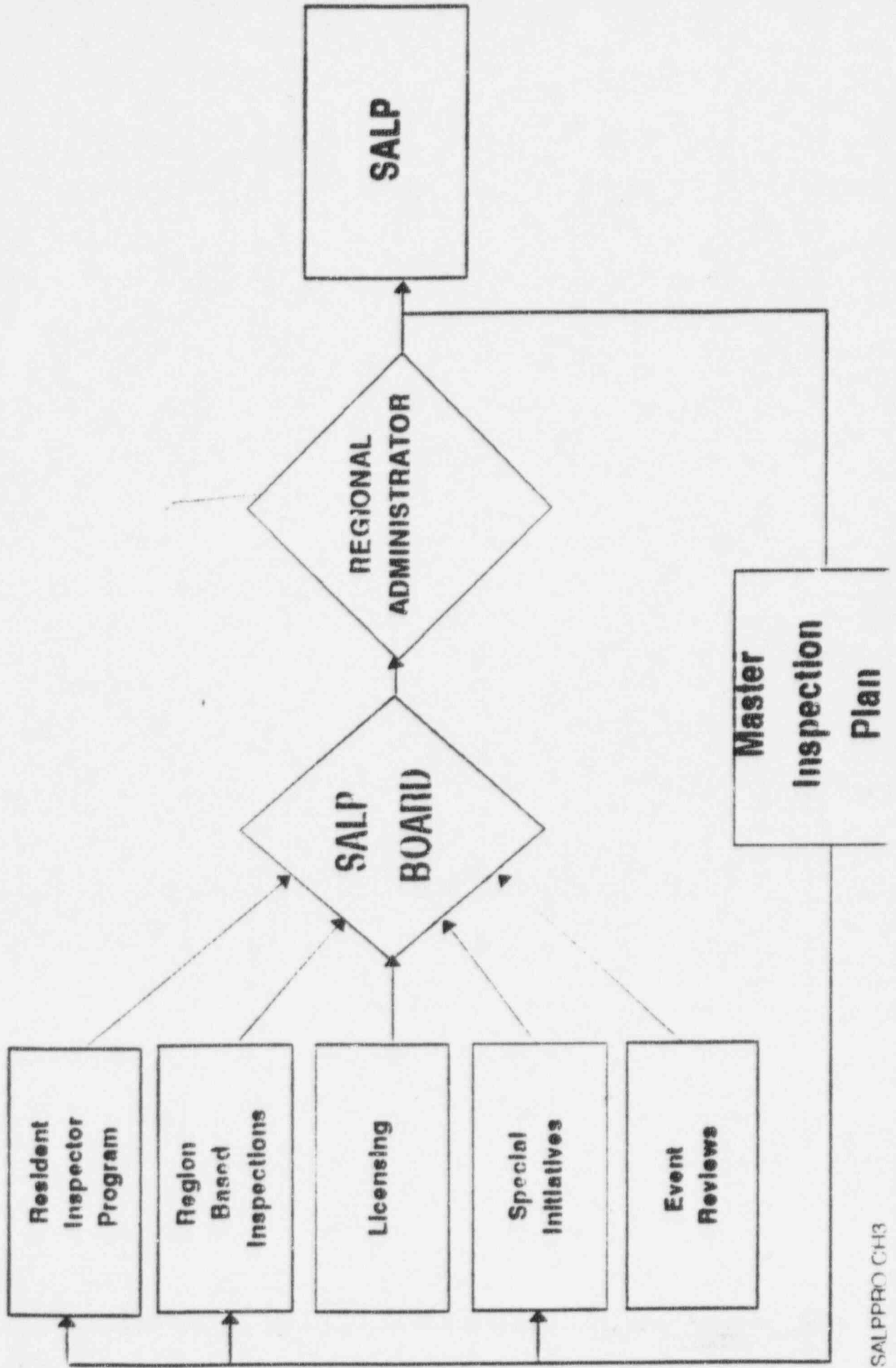
SURRY NUCLEAR PLANT

UNITS 1 & 2

**APPRAISAL PERIOD: JANUARY 22, 1995
THROUGH SEPTEMBER 28, 1996**

**PRESENTATION
NOVEMBER 18, 1996**

SALP PROCESS



SURRY NUCLEAR PLANT - UNITS 1&2

SALP RATING SUMMARY

FUNCTIONAL AREA	RATING THIS PERIOD	RATING LAST PERIOD
PLANT OPERATIONS	1	1
MAINTENANCE	2	2
ENGINEERING	1	1
PLANT SUPPORT	1	1

PLANT OPERATIONS

CATEGORY 1

STRENGTHS:

- MANAGEMENT SUPPORT AND OVERSIGHT
- CONTROL ROOM PROFESSIONALISM
- OPERATIONAL DECISIONS DEMONSTRATED SAFETY FOCUS
- EXCELLENT COMMUNICATIONS
- SELF-ASSESSMENT AND QUESTIONING ATTITUDES
- OPERATOR RESPONSE TO EQUIPMENT FAILURES

CHALLENGES:

- ATTENTION TO DETAIL DURING SYSTEM ISOLATIONS
- PROCEDURAL REQUIREMENTS DURING SCHEDULE-INTENSIVE ACTIVITIES

MAINTENANCE

CATEGORY 2

STRENGTHS:

- MANAGEMENT INVOLVEMENT AND SUPPORT
- WORK PLANNING AND BRIEFINGS
- TEAMWORK AND COMMUNICATIONS
- STRONG SELF-ASSESSMENTS

CHALLENGES:

- HUMAN PERFORMANCE DEFICIENCIES
- PROCEDURAL ADEQUACY
- EQUIPMENT FAILURES

ENGINEERING

CATEGORY 1

STRENGTHS:

- DESIGN CONTROL AND CONFIGURATION CONTROL
- ROOT CAUSE EVALUATIONS AND CORRECTIVE ACTIONS
- QUALITY OF ENGINEERING SAFETY EVALUATIONS
- TEAMWORK AND OUTAGE SUPPORT
- EFFECTIVE EQUIPMENT TRENDING PROGRAM

CHALLENGES:

- RESOLUTION OF REPETITIVE LETDOWN SYSTEM CRACKING PROBLEM

PLANT SUPPORT

CATEGORY 1

STRENGTHS:

- WELL IMPLEMENTED RADIOLOGICAL CONTROL PROGRAM
- CONTAMINATION CONTROL
- EFFLUENT CONTROLS AND ENVIRONMENTAL MONITORING
- EFFECTIVE EMERGENCY PREPAREDNESS PROGRAM
- PHYSICAL SECURITY PROGRAM IMPLEMENTATION
- FIRE PROTECTION SYSTEMS TESTING AND AUDITS

CHALLENGES:

- RADIATION WORK PERMIT COMPLIANCE
- INTERFACES WITH MAINTENANCE