

PHILADELPHIA ELECTRIC COMPANY

2301 MARKET STREET
P.O. BOX 8699
PHILADELPHIA, PA 19101
(215) 841-5001

JOSEPH W. GALLAGHER
VICE PRESIDENT
NUCLEAR SERVICES

March 30, 1988

Docket Nos. 50-277
50-278

Mr. W. R. Butler, Director
Project Directorate I-2
Division of Reactor Projects I/II
U.S. Nuclear Regulatory Commission
ATTN: Document Control Desk
Washington, D.C. 20555

SUBJECT: Peach Bottom Atomic Power Station
Diesel Generator Fuel Oil System
(TAC Nos. 47379, 47380)

REFERENCE: January 22, 1988 letter from
R. E. Martin, NRC, to E. G. Bauer, Jr., PECO

Dear Mr. Butler:

The referenced letter requested that Philadelphia Electric Company (PECO) provide specific confirmatory information to permit the NRC to complete its review of a Technical Specification Amendment Application for bringing Peach Bottom into conformance with Regulatory Guide 1.137. The Amendment Application was filed on October 1, 1981, and amended on November 15, 1984, November 24, 1986, September 2, 1987 and November 18, 1987. The NRC's requests are restated below followed by PECO's response.

1. NRC Request:

The licensee is requested to confirm that the diesel generator fuel oil system is, as apparently indicated by UFSAR Appendices C and D, included on the PBAPS Q-list and is designed to seismic Category I criteria.

8804120384 88.330
PDR ADOCK 05000277
P PDR

A001
|
|

Response:

The diesel generator fuel oil storage tanks, day tanks, transfer pumps, piping, pipe supports, and wye-strainers are included on the Peach Bottom Q-list. The applicable Q-numbers are 47.42, 47.43, 47.51, 47.53, 47.55 and 47.57, respectively. Furthermore, an itemization of each Q-listed component in the diesel generator fuel oil system is included on the new Q-list which was recently completed to provide a more detailed listing of Peach Bottom components. The new Q-List is currently undergoing final verification prior to issuance.

The diesel generator fuel oil system was designed to Seismic Category I criteria applicable at the time the plant was constructed. As shown on Bechtel Corporation piping isometric drawing FSK-M-433, all piping that is designated as "HDR" on P&ID M-323, Revision 13, is seismically analyzed by seismic span criteria and gravity spans. The information pertaining to the diesel generator fuel oil piping was transferred from P&ID M-323 to P&ID M-377, Sheet 4, during a recent computer aided design upgrade of the Peach Bottom P&ID's. The current revision of P&ID M-377, Sheet 4, is attached.

2. NRC Request:

Specify the standards for design of the fuel oil piping.

Response:

The diesel generator fuel oil piping is considered a "balance of plant" system and is designed and installed in accordance with ANSI B31.1, 1967 edition. This is documented in UFSAR Appendix A.

3. NRC Request:

Provide the results of the testing committed to in the November 18, 1987 submittal when available.

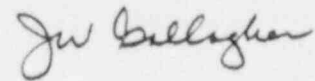
Response:

The testing committed to in our November 18, 1987 letter has been completed. With two transfer pumps operating simultaneously taking suction from the same storage tank, each pump delivered twenty gallons per minute of fuel oil to its day

tank. The Diesel Generators consume approximately three gallons per minute of fuel oil operating at rated load. Careful observation during the test revealed no evidence of cavitation or equipment malfunction.

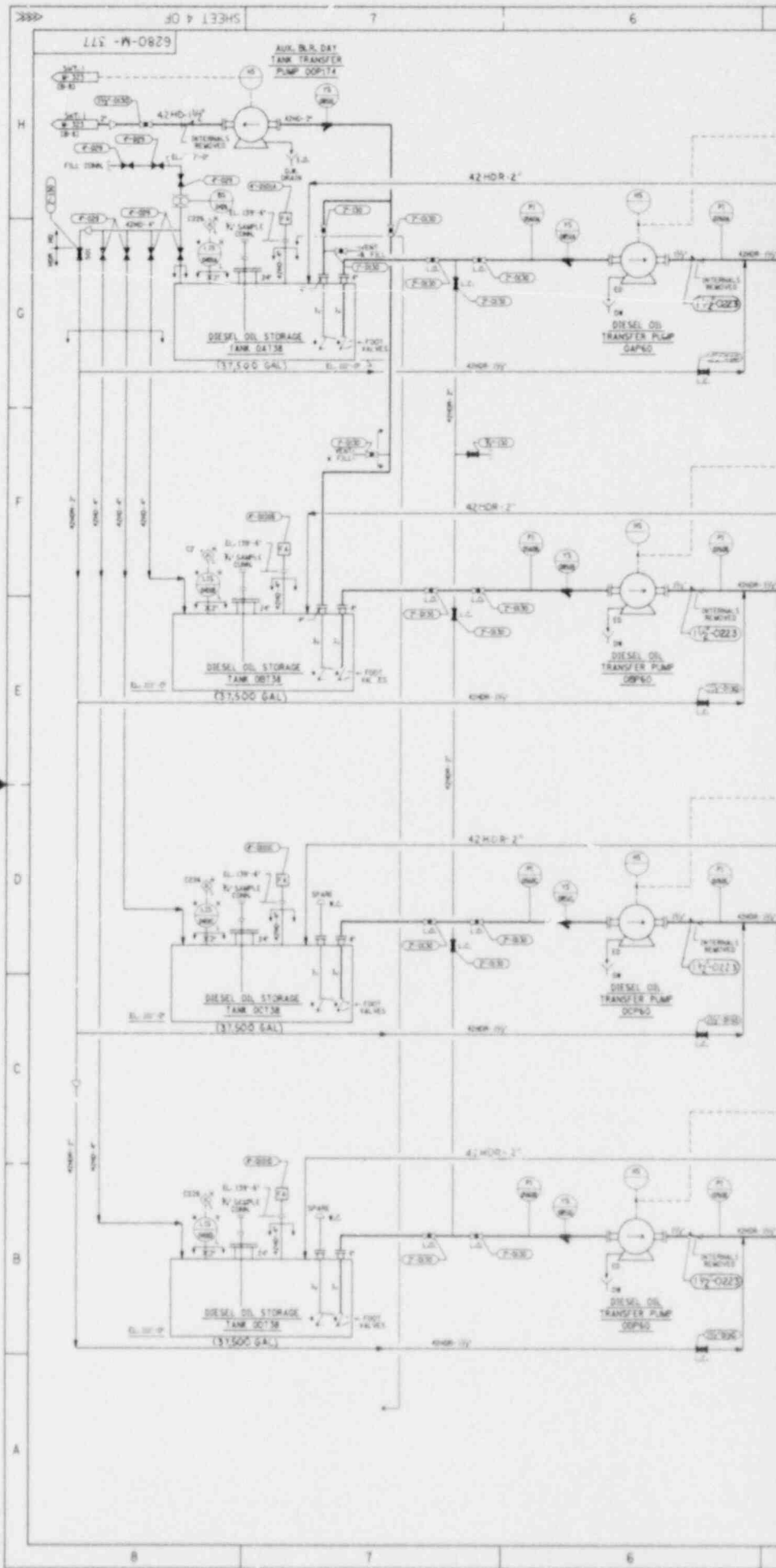
If you have any questions or require additional information, please do not hesitate to contact us.

Very truly yours,



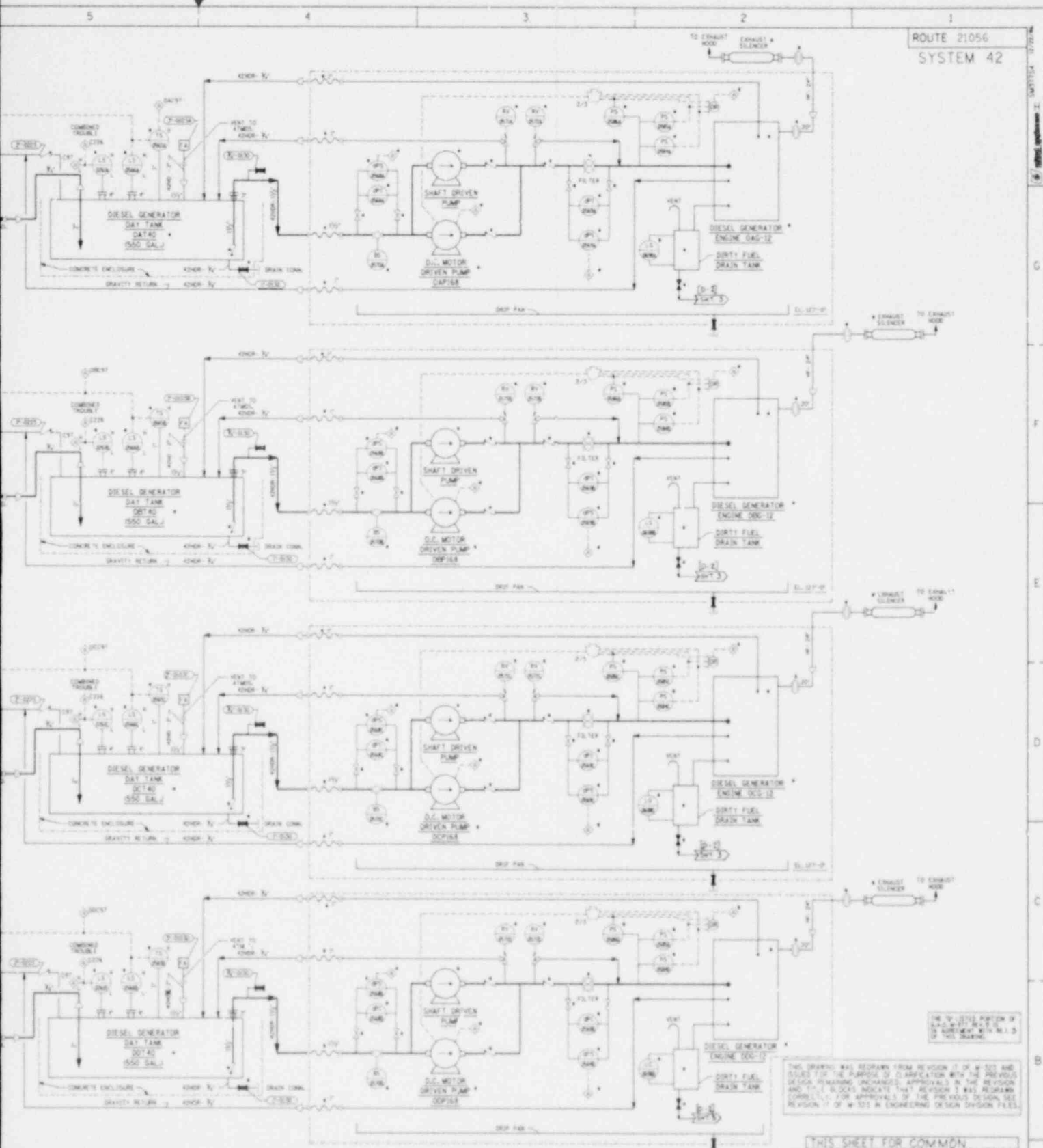
Attachment

cc: Addressee
W. T. Russell, Administrator, Region I, USNRC
R. E. Martin, NRC Peach Bottom Project Manager
T. P. Johnson, Resident Site Inspector



TI
APERTURE
CARD

Also Available On
Aperture Card



USE TO DETAIL PORTION OF
AS-BUILT ISSUE IN
AGREEMENT WITH N.E.S.
BY NUMBER

THIS DRAWING WAS REWRITTEN FROM REVISION 17 OF W-1033 AND
ISSUED FOR THE PURPOSE OF CLARIFICATION WITH THE PREVIOUS
DESIGN REVISIONS AND CHANGES APPROVED IN THE REVISION
AND THIS BLOCK INDICATES THAT REVISION 3 WAS REWRITTEN
COMPLETELY FOR APPROVAL IN THE PREVIOUS DESIGN. SEE
REVISION 17 OF W-1033 IN ENGINEERING DESIGN DIVISION FILES.

THIS SHEET FOR COMMON

AS-BUILT ISSUE

8804120384-01

DATE OF REVISION & SHEET NO.		DESCRIPTION	BY	CHKD	DATE
1	1	AS-BUILT ISSUE			

SCALE	DRAWN	ISS	DESIGNED	INCHES	APPROVED	DATE
1"=1'-0"	J. J. J.	J. J. J.	J. J. J.	1"=1'-0"	J. J. J.	11/11/55
SHEET 4 OF			12260-M-377-3			