



PSI PROGRAM PLAN:

LOW PRESSURE CORE SPRAY SYSTEM

PERRY NUCLEAR POWER PLANT, UNIT 1

Prepared For

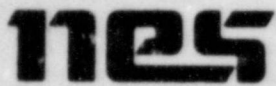
CLEVELAND ELECTRIC ILLUMINATING COMPANY

| Project Application<br>5532      |                        | Copy No                          | Assigned To                   |  |  |
|----------------------------------|------------------------|----------------------------------|-------------------------------|--|--|
| APPROVALS                        |                        |                                  |                               |  |  |
| TITLE / DEPT. - SIGNATURE - DATE |                        |                                  |                               |  |  |
| REV NO                           | PREPARED BY            | ISI Programs<br>Engineering Mgr. | Project Mgr.                  | QA Mgr.  |  |
| 0                                |                        |                                  |                               |  |  |
| 1                                |                        |                                  |                               |  |  |
| 2                                |                        |                                  |                               |  |  |
| 3                                | Susan Meyer<br>10/1/84 | <i>[Signature]</i><br>10/8/84    | <i>[Signature]</i><br>10/9/84 | <i>[Signature]</i><br>MEASLING for LCL<br>10-24-84 |  |
| 4                                |                        |                                  |                               |  |  |
| 5                                |                        |                                  |                               |  |  |
| 6                                |                        |                                  |                               |  |  |
| 7                                |                        |                                  |                               |  |  |
| 8                                |                        |                                  |                               |  |  |
| 9                                |                        |                                  |                               |  |  |
| 10                               |                        |                                  |                               |  |  |
| 11                               |                        |                                  |                               |  |  |

**CONTROLLED COPY**  
**VALID ONLY IF THIS STAMP IS RED**

8412180434 841214  
PDR ADOCK 05000440  
PDR  
G

| REV. NO. | DATE     | PAGE NO. | DESCRIPTION  | APPROVAL           |
|----------|----------|----------|--|--------------------|
| ①        | 1/14/82  |          | CRA 2284   |                    |
| ②        | 12/2/83  | -        | Addition of Component Examinations   | <i>Jacob</i>       |
| ③        | 10/24/84 | -        | Revised to incorporate field changes<br>and customer comments                      | <i>Susan Meyer</i> |
|          |          |          | Added Welded Attachments<br>(F.C.'s 04-01 #1, 04-02 #1 thru 4,<br>04-03 #1 and #2) |                    |
|          |          |          | CRA #4684  |                    |
|          |          |          |  |                    |
|          |          |          |  |                    |
|          |          |          |  |                    |
|          |          |          |  |                    |
|          |          |          |  |                    |
|          |          |          |  |                    |
|          |          |          |  |                    |
|          |          |          |  |                    |
|          |          |          |  |                    |
|          |          |          |  |                    |
|          |          |          |  |                    |
|          |          |          |  |                    |
|          |          |          |  |                    |
|          |          |          |  |                    |
|          |          |          |  |                    |
|          |          |          |  |                    |
|          |          |          |  |                    |
|          |          |          |  |                    |
|          |          |          |  |                    |



### TABLE OF CONTENTS

|   | <u>PAGE</u> |
|---|-------------|
| 1. INTRODUCTION                             | 4           |
| 2. SYSTEM DESCRIPTION                       | 4           |
| 2.1 Exemptions                              | 4           |
| 2.2 Exceptions                              | 4           |
| 2.3 Classifications                         | 4           |
| 2.4 Calibration Standards                   | 7           |
| 2.5 Isometric Figures and Sketches          | 7           |
| 3. PROGRAM PLAN AND SCHEDULE                | 8           |
| System Classification Figures               | 9           |
| Weld Map Figures                            | 10          |
| Component Figures                           | 13          |
| Schedule Sheets Piping Welds                | 15          |
| Schedule Sheets Component Examinations      | 30          |
| <b>Tables</b>                               |             |
| 2.1 System Exemptions                       | 5           |
| 2.2 System Exceptions (provided later)--    |             |
| 2.3 System Classifications                  | 6           |
| 2.4 System Referenced Calibration Standards | 7           |
| 2.5 System Isometric Figures                | 7           |

## LOW PRESSURE CORE SPRAY SYSTEM

### 1. INTRODUCTION

This document has been prepared to (1) delineate system-specific, itemized Preservice Inspection (PSI) requirements and, (2) present appropriate diagrams locating the areas for examination. All components in the Low Pressure Core Spray (LPCS) System required to be examined by ASME BPV Code, Section XI, are included.

The General Reference Text, NES Document 80A4420 presents the development and required procedural information for the PSI Program Plan generic to all systems examined.

### 2. SYSTEM DESCRIPTION

#### 2.1 EXEMPTIONS

The portions of the LPCS System that are exempted from examination as allowed by ASME BPV Code Section XI, and as described in the General Reference Text, are presented in Table 2.1

#### 2.2 EXCEPTIONS

Exception may be taken to code requirements of examination where access is not possible due to design limitations. Provision for such exception is presented in the General Reference Text. Exceptions that are taken to required exams of the LPCS System are itemized in Table 2.2 (Later).

#### 2.3 CLASSIFICATIONS

This system's piping and instrumentation diagrams have been reviewed and Quality Group A, B, and C (ASME Code Class 1, 2, and 3) boundaries have been established as required by ASME Code Section XI, IWA-1400. The General Reference Text discusses the basis for these determinations.

Diagrams delineating these boundaries for the LPCS System are presented in Figure B-7. LPCS System classification and boundaries are presented in Table 2.3

TABLE 2.1



SYSTEM EXEMPTIONS

| <u>ASME Code Class</u> | <u>Description</u>  | <u>Ref. P&amp;ID</u> | <u>Basis For Exemption</u>   |
|------------------------|---|----------------------|--|
| 1                      | All component connections, piping and associated valves of 1" nominal size and smaller            | D-302-705/D          | Piping 1" nominal size and smaller exempted as per ASME Section XI Code IWB-1220(b) S '78 Addenda  |
| 2                      | All vent, drain, test, sample, fill, by-pass and instrument connection 4" nominal size or smaller | D-302-705/D          | All component connections, piping & associated valves, and vessels (and their supports) that are 4" nominal pipe size & smaller are exempted as per ASME Section XI, IWC-1220(d) S '75 Addenda |

TABLE 2.3



SYSTEM CLASSIFICATIONS

| <u>ASME Code Class</u> | <u>Description</u>   | <u>Ref. P&amp;ID</u> |
|------------------------|--|----------------------|
| 1                      | 12" D1-1 from and including valve E21-F005 up to the reactor pressure vessel nozzle N5 | D-302-705/D          |
| 2                      | 24" L1-2 from suppression pool E001 to main pump C001                                  | D-302-705/D          |
| 2                      | 6" L1-2 from 24" L1-2 up to valve E21-F008   | D-302-705/D          |
| 2                      | 16" L1-2 from 24" L1-2 up to RHR intertie  |                      |
| 2                      | 14" G1-2 from main pump C001 up to valve F005, including 6" by-pass                    | D-302-705/D          |
| 2                      | 12" L1-2 from 14" L1-2 up to valve F501  | D-302-705/D          |
| 2                      | 6" G1-2 from 14" L1-2 up to valve F025   | D-302-705/D          |

## 2.4 CALIBRATION STANDARDS

Table 2.4 lists the Calibration Standards for ultrasonic examinations scheduled for the LPCS System. All calibration standards are to be retained on site.

Design drawing documents are presented in Table 3.5 of the General Reference Text.(Later)

**TABLE 2.4**

**LPCS System: Referenced Calibration Standards**

| <u>Title</u>         | <u>Line Class</u> | <u>Schedule</u> | <u>Material</u> |
|----------------------|-------------------|-----------------|-----------------|
| PY-12-080-CS         | 12" D1-1          | Sch-80          | SA106 Grade B   |
| PY-12-XX1-CS-F       |                   | Sch-80          | SA234 WPB       |
| PY-VALVE-XX1-CS      |                   | 2.165"          | SA105           |
| PY-STUD-LPCS-2.25-CS |                   | 2.25" $\phi$    | SA194           |

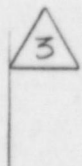
## 2.5 ISOMETRIC FIGURES AND SKETCHES

The piping isometric and component figures listed in Table 2.5 show the identification and location of areas for the LPCS System requiring examination. Sketches may also be included that illustrate or locate areas of components requiring identification for examination.

**TABLE 2.5**

**LPCS System: Isometric/ Component Figures**

|       |            |
|-------|------------|
| 04-01 | Revision 1 |
| 04-02 | Revision 2 |
| 04-03 | Revision 2 |
| 04-04 | Revision 0 |
| 04-05 | Revision 0 |



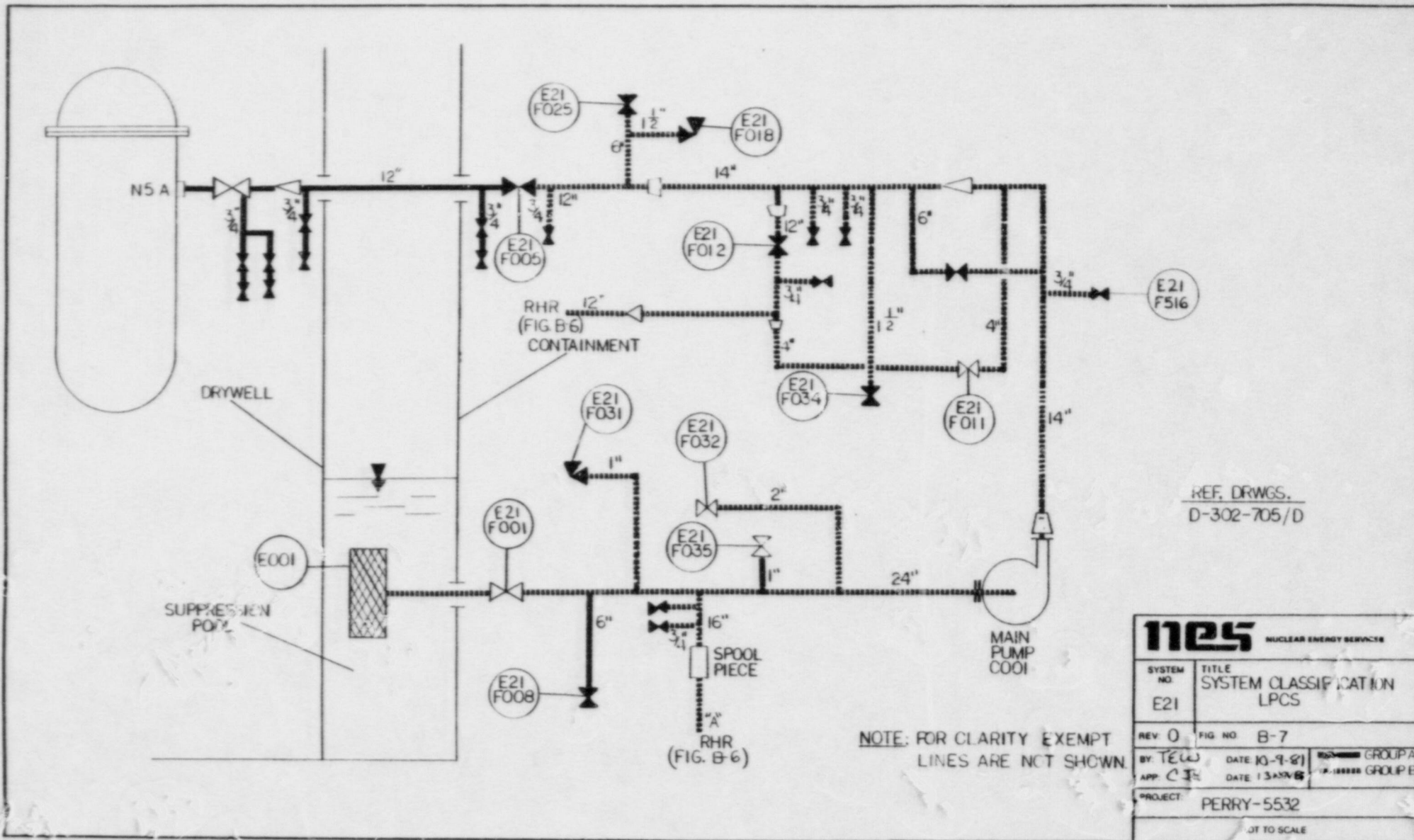


### 3. PROGRAM PLAN AND SCHEDULE

The specific PSI examination requirements are defined in the PSI Program Plan and its schedule tables. Each weld or other examination area is designated by a unique identification number, and then described. Also identified are applicable examination category, method, procedure number, any calibration standard number referenced for ultrasonic examination, and the zone in which the examination area is located, as described in Section 3 of the General Reference Text.

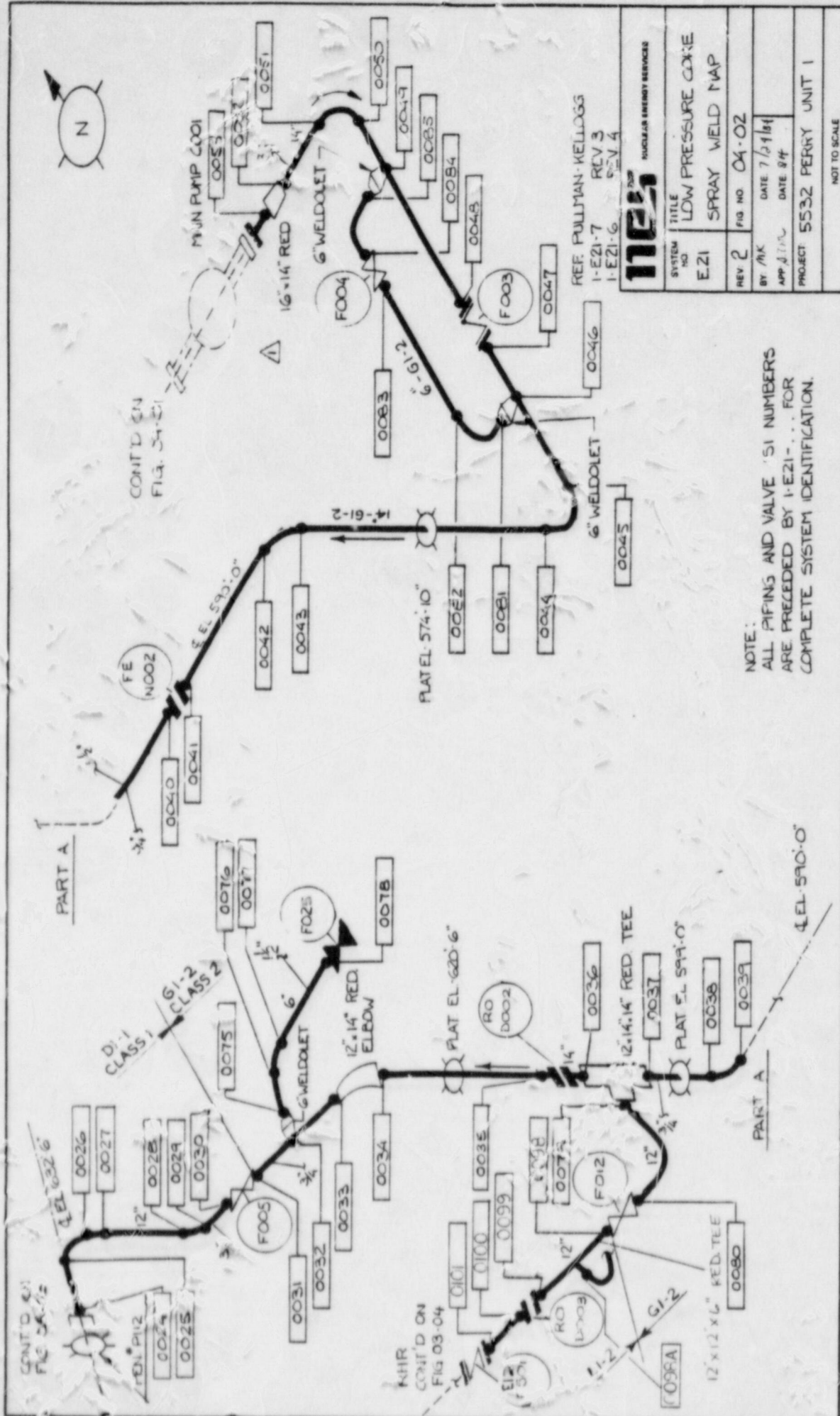
Examination items are first divided according to the weld or hanger figure that they appear on. Multiple examination requirements of the same component are listed separate in the schedule tables. Component examinations or component bolting follow the piping weld examinations for each system. Hanger examinations appear as the next section, followed by the hydrovisual examination requirements.





REF. DRWGS.  
D-302-705/D

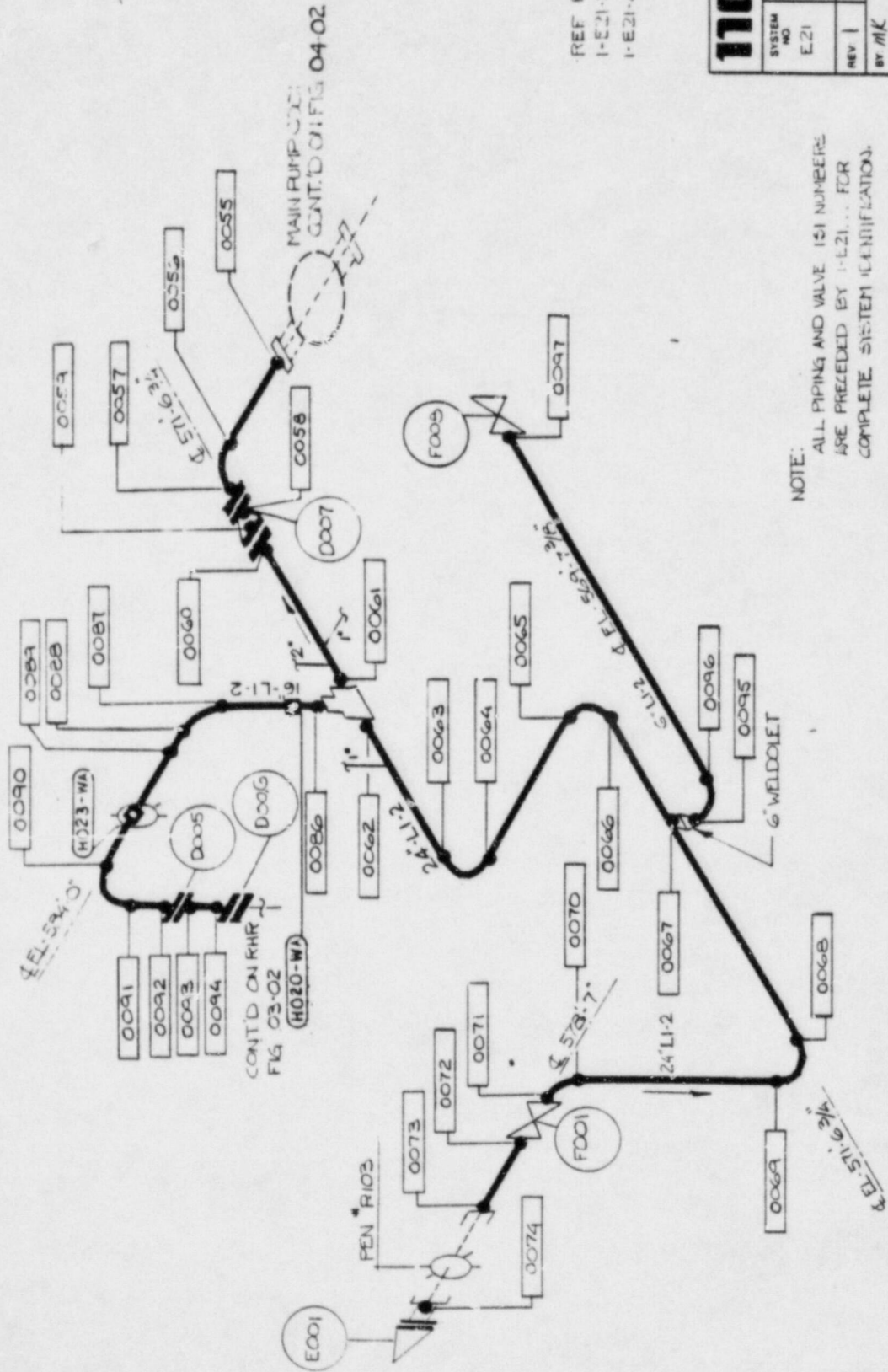
|                                    |  |
|------------------------------------|--|
| <b>nes</b> NUCLEAR ENERGY SERVICES |  |
| SYSTEM NO.<br>E21                  | TITLE<br>SYSTEM CLASSIFICATION<br>LPCS |
| REV: 0                             | FIG NO: B-7                            |
| BY: TEW                            | DATE: 10-9-81                          |
| APP: CJS                           | DATE: 13-MAY-82                        |
| PROJECT: PERRY-5532                | GROUP A<br>GROUP B                     |
| NOT TO SCALE                       |  |



|            |                                  |
|------------|----------------------------------|
| SYSTEM NO. | E21                              |
| TITLE      | LOW PRESSURE CORE SPRAY WELD MAP |
| REV        | 2                                |
| FIG NO.    | 04-02                            |
| BY /CHK    | DATE 7/2/84                      |
| APP /TTL   | DATE 8/84                        |
| PROJECT    | 5532 PERRY UNIT 1                |

REF. PULLMAN-KELLOGG  
 1-E21-7 REV 3  
 1-E21-6 REV 4

NOTE:  
 ALL PIPING AND VALVE 'S1 NUMBERS ARE PRECEDED BY 1-E21-... FOR COMPLETE SYSTEM IDENTIFICATION.



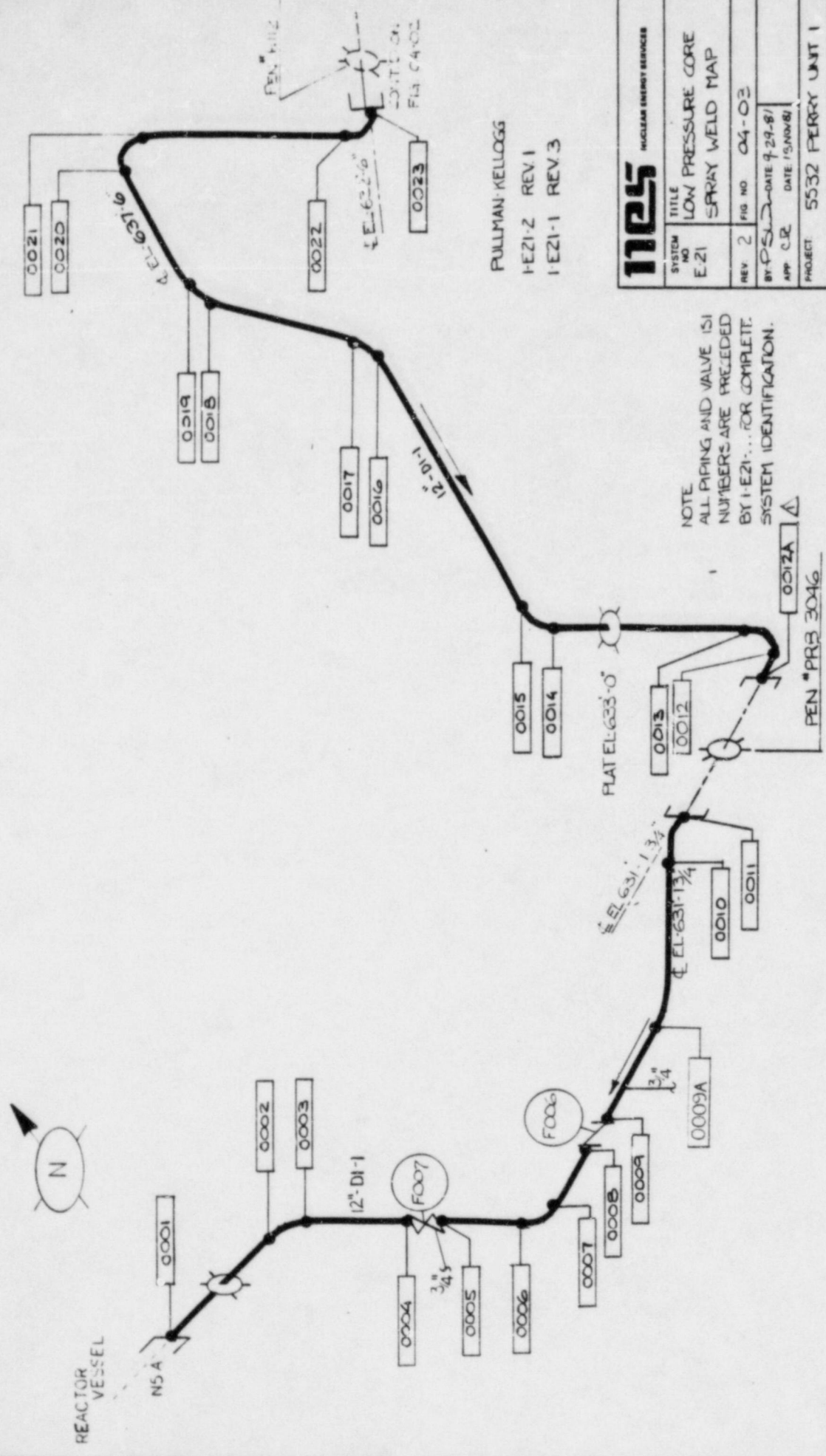
NOTE:  
ALL PIPING AND VALVE ISI NUMBERS  
ARE PRECEDED BY 1-E21... FOR  
COMPLETE SYSTEM IDENTIFICATION.

REF PULLMAN-FELLOS  
1-E21-5 REV. 8  
1-E21-4 REV. 4

**nes**  
NUCLEAR ENERGY SERVICES

|           |                                  |       |
|-----------|----------------------------------|-------|
| SYSTEM NO | E21                              |       |
| TITLE     | LOW PRESSURE CORE SPRAY WELD MAP |       |
| REV       | FIG NO                           | 34-01 |
| BY MK     | DATE 7/24/87                     |       |
| APP. JML  | DATE 7/1/87                      |       |
| PROJECT   | E532 FERRY UNIT 1                |       |

NOT TO SCALE

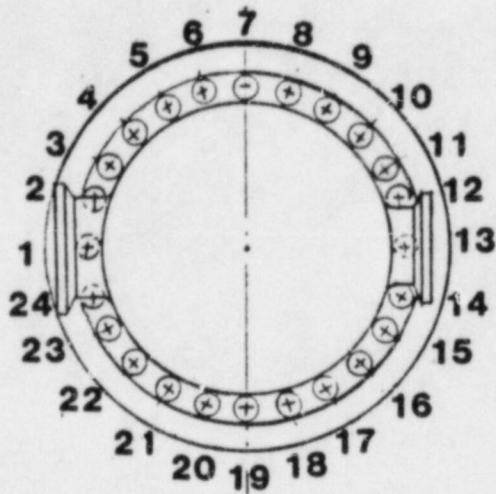


|                                    |  |
|------------------------------------|--|
| <b>nes</b> NUCLEAR ENERGY SERVICES |  |
| SYSTEM NO<br>E-21                  | TITLE<br>LOW PRESSURE CORE<br>SPRAY WELD MAP |
| REV 2                              | FIG NO 04-03                                 |
| BY P.S.D.                          | DATE 4-29-87                                 |
| APP C.R.                           | DATE 7/30/08                                 |
| PROJECT 5532 PERRY UNIT 1          |  |

PULLMAN, KELLOGG  
 I-EZ1-2 REV.1  
 I-EZ1-1 REV.3

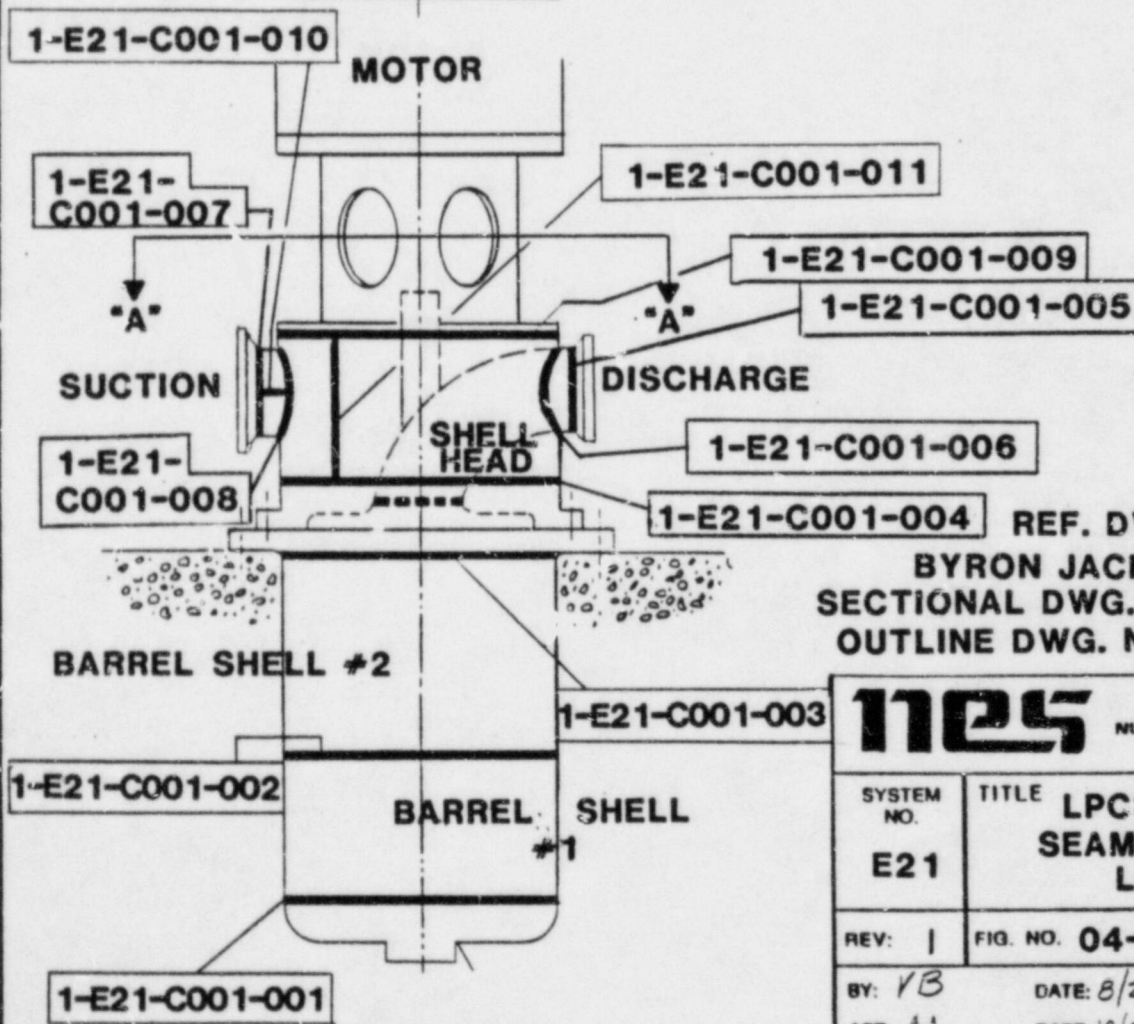
NOTE  
 ALL PIPING AND VALVE ISI  
 NUMBERS ARE PRECEDED  
 BY I-EZ1... FOR COMPLETE  
 SYSTEM IDENTIFICATION.

NOT TO SCALE



VIEW "A"- "A"

**NOTE: COMPLETE BOLTING IDENTIFICATION NUMBERS HAVE PREFIX OF 1-E21-C001 FOLLOWING WITH "B" (EX.: 1-E21-C001-2B)**



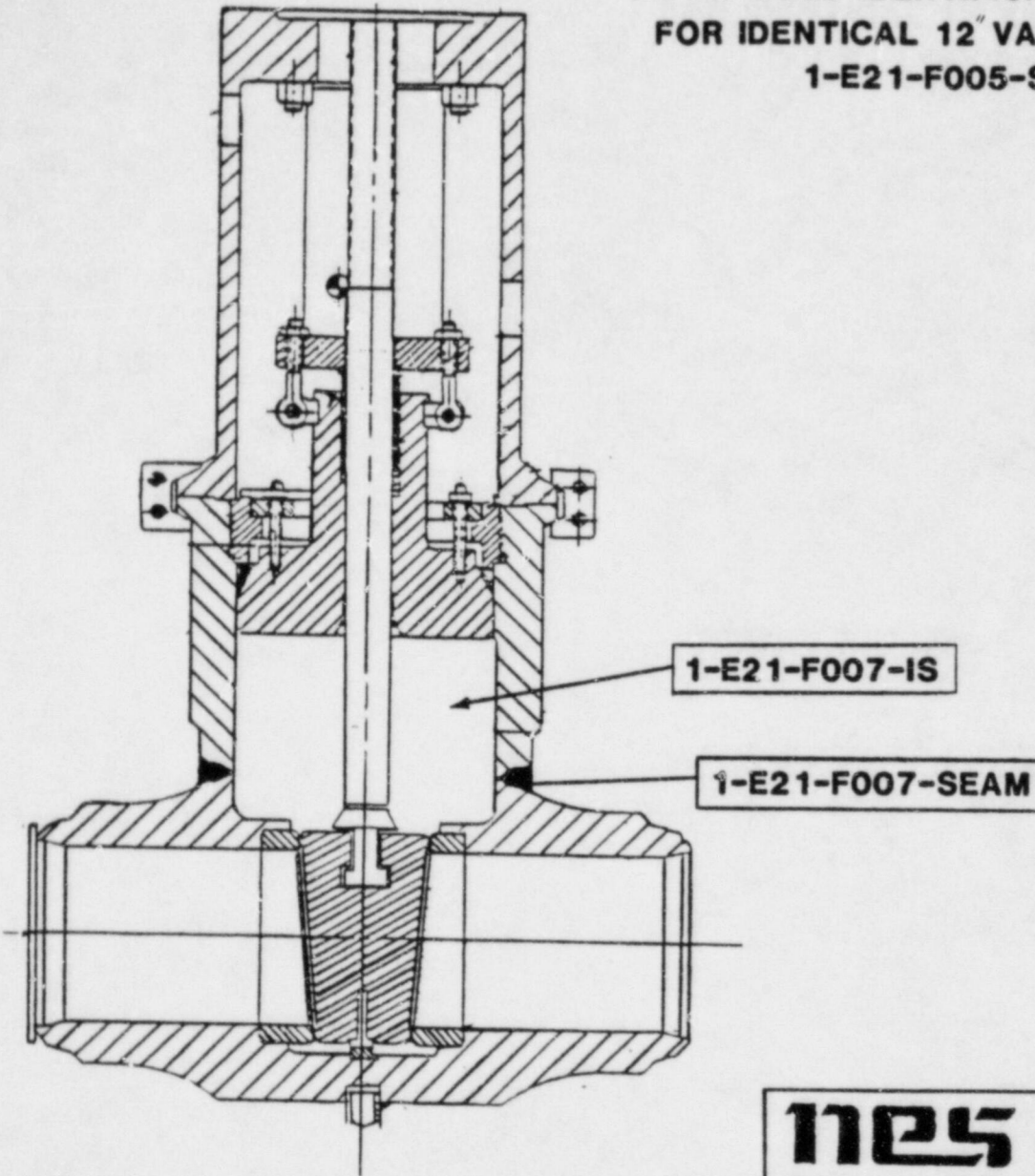
REF. DWGS.

**BYRON JACKSON PUMP SECTIONAL DWG. NO. 1F-7780/A OUTLINE DWG. NO. 105-D-5175**

|                                    |  |
|------------------------------------|--|
| <b>nes</b> NUCLEAR ENERGY SERVICES |  |
| SYSTEM NO.<br><b>E21</b>           | TITLE<br><b>LPCS PUMP C001 SEAM AND BOLTING LOCATION</b> |
| REV:                               | FIG. NO. <b>04-04</b>                                    |
| BY: <i>VB</i>                      | DATE: <i>8/22/83</i>                                     |
| APP: <i>At</i>                     | DATE: <i>10/07/83</i>                                    |
| PROJECT:                           | <b>PERRY UNIT 1</b>                                      |
| NOT TO SCALE                       |  |

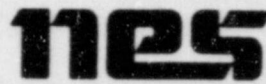
**CLASS 2**

**NOTE: WELD IDENTIFICATION NUMBER  
FOR IDENTICAL 12" VALVE F005 IS:  
1-E21-F005-SEAM**



**REF. DWGS.**  
**BORG WARNER DWG. NO. 81220-2**  
 " " " **81030-1**  
**GAI DWG. NO. 4549-40-759-1-2**  
 " " " **4549-40-732-1-2**

|                                    |  |
|------------------------------------|--|
| <b>nes</b> NUCLEAR ENERGY SERVICES |  |
| SYSTEM NO.<br><b>E21</b>           | TITLE<br><b>LPCS 12" GATE VALVES F007 &amp; F005 SEAM LOCATION</b> |
| REV: <b>0</b>                      | FIG. NO. <b>04-05</b>  |
| BY: <i>VB</i>                      | DATE: <i>8/24/83</i>   |
| APP: <i>JA</i>                     | DATE: <i>10/6/83</i>   |
| PROJECT:                           | <b>PERRY UNIT 1</b>  |
| NOT TO SCALE                       |  |



# PROGRAM PLAN AND SCHEDULE

5532 - PERRY

System: LPCS  
Document No. 80A4423  
Preservice Inspection

By:      / 9/84  
App: Sam / 9/84  
Rev. 3 Page 15 of 35

| COMPONENT IDENTIFICATION   | COMPONENT DESCRIPTION                                     | PROCEDURE NUMBER | CALIBRATION BLOCK (If applicable) | CODE CATEGORY | CODE EXAM METHOD | ZONE NO. | REMARKS |
|----------------------------|---|------------------|-----------------------------------|---------------|------------------|----------|---------|
| <b>PIPING WELDS</b>        |   |                  |                                   |               |                  |          |         |
| <b>Ref. Dwg. No. 04-01</b> |   |                  |                                   |               |                  |          |         |
| 1-E21-0074                 | 24" Suction Strainer E001<br>Flange to Penetration #P-103 | 80A0183          | N/A                               | C-F           | PT               | XVII     |         |
| 1-E21-0073                 | Penetration P-103 to 24" Pipe                             | 80A0183          | N/A                               | C-F           | PT               | XIII     |         |
| 1-E21-0072                 | 24" Pipe to Valve F001                                    | 80A0183          | N/A                               | C-F           | PT               | XIII     |         |
| 1-E21-0071                 | 24" Valve F001 to Elbow                                   | 80A0183          | N/A                               | C-F           | PT               | XIII     |         |
| 1-E21-0070                 | 24" Elbow to Pipe   | 80A0183          | N/A                               | C-F           | PT               | XIII     |         |
| 1-E21-0069                 | 24" Pipe to Elbow   | 80A0183          | N/A                               | C-F           | PT               | XIV      |         |
| 1-E21-0068                 | 24" Elbow to Pipe   | 80A0183          | N/A                               | C-F           | PT               | XIV      |         |
| 1-E21-0067                 | 24" Pipe to 6" Weld-o-let                                 | 80A0183          | N/A                               | C-F           | PT               | XIV      |         |



# PROGRAM PLAN AND SCHEDULE

5532 - PERRY

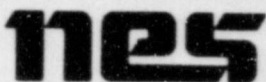
System: LPCS  
Document No. 80A4423  
Preservice Inspection

By: ED / 9/84  
App: Sam / 9/84  
Rev. 3 Page 16 of 35

| COMPONENT IDENTIFICATION                   | COMPONENT DESCRIPTION         | PROCEDURE NUMBER | CALIBRATION BLOCK (If applicable) | CODE CATEGORY | CODE EXAM METHOD | ZONE NO. | REMARKS |
|--|-------------------------------|------------------|-----------------------------------|---------------|------------------|----------|---------|
| <b>PIPING WELDS</b><br>Ref. Dwg. No. 04-01 |                               |                  |                                   |               |                  |          |         |
| 1-E21-0095                                 | 6" Weld-o-let to Elbow        | 80A0183          | N/A                               | C-F           | PT               | XIV      |         |
| 1-E21-0096                                 | 6" Elbow to Pipe              | 80A0183          | N/A                               | C-F           | PT               | XIV      |         |
| 1-E21-0097                                 | 6" Pipe to Valve F008         | 80A0183          | N/A                               | C-F           | PT               | XIV      |         |
| 1-E21-0066                                 | 24" Pipe to Elbow             | 80A0183          | N/A                               | C-F           | PT               | XIV      |         |
| 1-E21-0065                                 | 24" Elbow to Pipe             | 80A0183          | N/A                               | C-F           | PT               | XIV      |         |
| 1-E21-0064                                 | 24" Pipe to Elbow             | 80A0183          | N/A                               | C-F           | PT               | XIV      |         |
| 1-E21-0063                                 | 24" Elbow to Pipe             | 80A0183          | N/A                               | C-F           | PT               | XIV      |         |
| 1-E21-0062                                 | 24" Pipe to 24"x 24"x 16" Tee | 80A0183          | N/A                               | C-F           | PT               | XIV      |         |



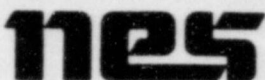
System: LPCS  
 Document No. 80A4423  
 Preservice Inspection



**PROGRAM PLAN AND SCHEDULE**  
 5532 - PERRY

By: EDD / 1 9/84  
 App: jam / 1 9/84  
 Rev. 3 Page 17 of 35

| COMPONENT IDENTIFICATION   | COMPONENT DESCRIPTION         | PROCEDURE NUMBER | CALIBRATION BLOCK (If applicable) | CODE CATEGORY | CODE EXAM METHOD | ZONE NO. | REMARKS |
|----------------------------|-------------------------------|------------------|-----------------------------------|---------------|------------------|----------|---------|
| <b>PIPING WELDS</b>        |                               |                  |                                   |               |                  |          |         |
| <b>Ref. Dwg. No. 04-01</b> |                               |                  |                                   |               |                  |          |         |
| 1-E21-0086                 | 24"x 24"x 16" Tee to 16" Pipe | 80A0183          | N/A                               | C-F           | PT               | XIV      |         |
| 1-E21-0087                 | 16" Pipe to Elbow             | 80A0183          | N/A                               | C-F           | PT               | XIII     |         |
| 1-E21-0088                 | 16" Elbow to Pipe             | 80A0183          | N/A                               | C-F           | PT               | XIII     |         |
| 1-E21-0089                 | 16" Pipe to Pipe              | 80A0183          | N/A                               | C-F           | PT               | XIII     |         |
| 1-E21-0090                 | 16" Pipe to Elbow             | 80A0183          | N/A                               | C-F           | PT               | XIII     |         |
| 1-E21-0091                 | 16" Elbow to Pipe             | 80A0183          | N/A                               | C-F           | PT               | XIII     |         |
| 1-E21-0092                 | 16" Pipe to Flange D005       | 80A0183          | N/A                               | C-F           | PT               | XIII     |         |
| 1-E21-0093                 | 16" Flange D005 to Pipe       | 80A0183          | N/A                               | C-F           | PT               | XIII     |         |



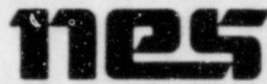
System: LPCS  
Document No. 80A4423  
Preservice Inspection

# PROGRAM PLAN AND SCHEDULE

5532 - PERRY

By:      / 9/84  
App: jam / 9/84  
Rev. 3 Page 18 of 35

| COMPONENT IDENTIFICATION                   | COMPONENT DESCRIPTION                    | PROCEDURE NUMBER | CALIBRATION BLOCK (if applicable) | CODE CATEGORY | CODE EXAM METHOD | ZONE NO. | REMARKS |
|--|--|------------------|-----------------------------------|---------------|------------------|----------|---------|
| <b>PIPING WELDS</b><br>Ref. Dwg. No. 04-01 |  |                  |                                   |               |                  |          |         |
| 1-E2i-0094                                 | 16" Pipe to Flange D006                  | 80A0183          | N/A                               | C-F           | PT               | XIII     |         |
| 1-E21-0061                                 | 24"x 24"x 16" Tee to 24" Pipe            | 80A0183          | N/A                               | C-F           | PT               | XIV      |         |
| 1-E21-0060                                 | 24" Pipe to Flange                       | 80A0183          | N/A                               | C-F           | PT               | XIV      |         |
| 1-E21-0059                                 | 24" Flange to Pipe Suction Strainer D007 | 80A0183          | N/A                               | C-F           | PT               | XIV      |         |
| 1-E21-0058                                 | 24" Pipe Suction Strainer D007 to Flange | 80A0183          | N/A                               | C-F           | PT               | XIV      |         |
| 1-E21-0057                                 | 24" Flange to Elbow                      | 80A0183          | N/A                               | C-F           | PT               | XIV      |         |
| 1-E21-0056                                 | 24" Elbow to Pipe                        | 80A0183          | N/A                               | C-F           | PT               | XIV      |         |
| 1-E21-0055                                 | 24" Pipe to Flange                       | 80A0183          | N/A                               | C-F           | PT               | XIV      |         |

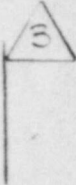


# PROGRAM PLAN AND SCHEDULE

5532 - PERRY

System: LPCS  
Document No. 80A4423  
Preservice Inspection

By: EM / 10/84  
App: sm / 10/84  
Rev. 3 Page 19 of 35

| COMPONENT IDENTIFICATION                         | COMPONENT DESCRIPTION  | PROCEDURE NUMBER | CALIBRATION BLOCK (if applicable) | CODE CATEGORY | CODE EXAM METHOD | ZONE NO. | REMARKS   |
|--|------------------------|------------------|-----------------------------------|---------------|------------------|----------|---|
| <b>WELDED ATTACHMENTS</b><br>Ref. Dwg. No. 04-01 |                        |                  |                                   |               |                  |          |   |
| I-E21-H023-WA                                    | Pipe Welded Attachment | 80A0183          | N/A                               | C-E           | PT               | XIII     |  |
| I-E21-H020-WA                                    | Pipe Welded Attachment | 80A0183          | N/A                               | C-E           | PT               | XIV      |   |

# NES

## PROGRAM PLAN AND SCHEDULE

5532 - PERRY

By:      / 9/84  
 App: sam / 9/84  
 Rev. 3 Page 20 of 35

| COMPONENT IDENTIFICATION   | COMPONENT DESCRIPTION          | PROCEDURE NUMBER | CALIBRATION BLOCK (If applicable) | CODE CATEGORY | CODE EXAM METHOD | ZONE NO | REMARKS |
|----------------------------|--------------------------------|------------------|-----------------------------------|---------------|------------------|---------|---------|
| <b>PIPING WELDS</b>        |                                |                  |                                   |               |                  |         |         |
| <b>Ref. Dwg. No. 04-02</b> |                                |                  |                                   |               |                  |         |         |
| 1-E21-0053                 | 15" Flange to 16"x 14" Reducer | 80A0183          | N/A                               | C-F           | PT               | XIV     | △<br>3  |
| 1-E21-0052                 | 16"x 14" Reducer to 14" Pipe   | 80A0183          | N/A                               | C-F           | PT               | XIV     |         |
| 1-E21-0051                 | 14" Pipe to Elbow              | 80A0183          | N/A                               | C-F           | PT               | XIV     |         |
| 1-E21-0050                 | 14" Elbow to Pipe              | 80A0183          | N/A                               | C-F           | PT               | XIV     |         |
| 1-E21-0049                 | 14" Pipe to 6" Weld-o-let      | 80A0183          | N/A                               | C-F           | PT               | XIV     |         |
| 1-E21-0085                 | 6" Weld-o-let to 6" Elbow      | 80A0183          | N/A                               | C-F           | PT               | XIV     |         |
| 1-E21-0084                 | 6" Elbow to Valve F004         | 80A0183          | N/A                               | C-F           | PT               | XIV     |         |
| 1-E21-0083                 | 6" Valve to Pipe               | 80A0183          | N/A                               | C-F           | PT               | XIV     |         |

System: LPCS  
 Document No. 80A4423  
 Preservice Inspection

# NES

## PROGRAM PLAN AND SCHEDULE

5532 - PERRY

By: ED / 9/84  
 App: jam / 9/84  
 Rev. 3 Page 21 of 35

| COMPONENT IDENTIFICATION                   | COMPONENT DESCRIPTION          | PROCEDURE NUMBER | CALIBRATION BLOCK (if applicable) | CODE CATEGORY | CODE EXAM METHOD | ZONE NO. | REMARKS |
|--|--------------------------------|------------------|-----------------------------------|---------------|------------------|----------|---------|
| <b>PIPING WELDS</b><br>Ref. Dwg. No. 04-02 |                                |                  |                                   |               |                  |          |         |
| 1-E21-0082                                 | 6" Pipe to Elbow               | 80A0183          | N/A                               | C-F           | PT               | XIV      |         |
| 1-E21-0081                                 | 6" Elbow to 6" Weld-o-let      | 80A0183          | N/A                               | C-F           | PT               | XIV      |         |
| 1-E21-0048                                 | 14" Pipe to Flanged Valve F003 | 80A0183          | N/A                               | C-F           | PT               | XIV      |         |
| 1-E21-0047                                 | 14" Flanged Valve to Pipe      | 80A0183          | N/A                               | C-F           | PT               | XIV      |         |
| 1-E21-0046                                 | 14" Pipe to 6" Weld-o-let      | 80A0183          | N/A                               | C-F           | PT               | XIV      |         |
| 1-E21-0045                                 | 14" Pipe to Elbow              | 80A0183          | N/A                               | C-F           | PT               | XIV      |         |
| 1-E21-0044                                 | 14" Elbow to Pipe              | 80A0183          | N/A                               | C-F           | PT               | XIV      |         |
| 1-E21-0043                                 | 14" Pipe to Elbow              | 80A0183          | N/A                               | C-F           | PT               | XIII     |         |



# PROGRAM PLAN AND SCHEDULE

5532 - PERRY

System: LPCS  
Document No. 80A4423  
Preservice Inspection

By: ED / 9/84  
App: Sam / 9/84  
Rev. 3 Page 22 of 35

| COMPONENT IDENTIFICATION                   | COMPONENT DESCRIPTION          | PROCEDURE NUMBER | CALIBRATION BLOCK (If applicable) | CODE CATEGORY | CODE EXAM METHOD | ZONE NO. | REMARKS |
|--|--------------------------------|------------------|-----------------------------------|---------------|------------------|----------|---------|
| <b>PIPING WELDS</b><br>Ref. Dwg. No. 04-02 |                                |                  |                                   |               |                  |          |         |
| 1-E21-0042                                 | 14" Elbow to Pipe              | 80A0183          | N/A                               | C-F           | PT               | XIII     |         |
| 1-E21-0041                                 | 14" Pipe to Flange FE-N002     | 80A0183          | N/A                               | C-F           | PT               | XIII     |         |
| 1-E21-0040                                 | 14" Flange FE-N002 to Pipe     | 80A0183          | N/A                               | C-F           | PT               | XIII     |         |
| 1-E21-0039                                 | 14" Pipe to Elbow              | 80A0183          | N/A                               | C-F           | PT               | XIII     |         |
| 1-E21-0038                                 | 14" Elbow to Pipe              | 80A0183          | N/A                               | C-F           | PT               | XIII     |         |
| 1-E21-0037                                 | 14" Pipe to 14"x 14"x 12" Tee  | 80A0183          | N/A                               | C-F           | PT               | XII      |         |
| 1-E21-0079                                 | 14"x 14"x 12" Tee to 12" Elbow | 80A0183          | N/A                               | C-F           | PT               | XII      |         |
| 1-E21-0080                                 | 12" Elbow to Valve F012        | 80A0183          | N/A                               | C-F           | PT               | XII      |         |

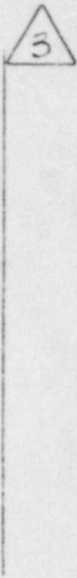
System: LPCS  
 Document No. 80A4423  
 Preservice Inspection

# NES

## PROGRAM PLAN AND SCHEDULE

5532 - PERRY

By: CD / 9/84  
 App: Sam / 9/84  
 Rev. 3 Page 23 of 35

| COMPONENT IDENTIFICATION                   | COMPONENT DESCRIPTION                                 | PROCEDURE NUMBER | CALIBRATION BLOCK (If applicable) | CODE CATEGORY | CODE EXAM METHOD | ZONE NO | REMARKS  |
|--|---|------------------|-----------------------------------|---------------|------------------|---------|--|
| <b>PIPING WELDS</b><br>Ref. Dwg. No. 04-02 |   |                  |                                   |               |                  |         |  |
| 1-E21-0098                                 | 12" Valve to 12" x 12" Reducing Tee                   | 80A0183          | N/A                               | C-F           | PT               | XII     |  |
| 1-E21-0098A                                | 12" x 12" x 6" Reducing Tee to 6" x 4" Reducing Elbow | 80A0183          | N/A                               | C-F           | PT               | XII     |  |
| 1-E21-0099                                 | 12" x 12" x 6" Reducing Tee to Flange                 | 80A0183          | N/A                               | C-F           | PT               | XII     |  |
| 1-E21-0100                                 | 12" Flange to Pipe                                    | 80A0183          | N/A                               | C-F           | PT               | XII     |  |
| 1-E21-0101                                 | 12" Pipe to Flanged Valve F501                        | 80A0183          | N/A                               | C-F           | PT               | XII     |  |
| 1-E21-0036                                 | 14"x 14"x 12" Tee to 14" Flange                       | 80A0183          | N/A                               | C-F           | PT               | XII     |  |
| 1-E21-0035                                 | 14" Flange to Pipe                                    | 80A0183          | N/A                               | C-F           | PT               | XII     |  |
| 1-E21-0034                                 | 14" Pipe to 14"x 12" Reducing Elbow                   | 80A0183          | N/A                               | C-F           | PT               | XI      |  |



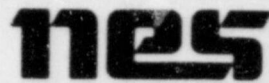
System: LPCS  
 Document No. 80A4423  
 Preservice Inspection

**PROGRAM PLAN AND SCHEDULE**  
 5532 - PERRY

By: ED / 9/84  
 App: AKM / 9/84  
 Rev. 3 Page 24 of 35

| COMPONENT IDENTIFICATION   | COMPONENT DESCRIPTION               | PROCEDURE NUMBER | CALIBRATION BLOCK (if applicable) | CODE CATEGORY | CODE EXAM METHOD | ZONE NO | REMARKS |
|----------------------------|-------------------------------------|------------------|-----------------------------------|---------------|------------------|---------|---------|
| <b>PIPING WELDS</b>        |                                     |                  |                                   |               |                  |         |         |
| <b>Ref. Dwg. No. 04-02</b> |                                     |                  |                                   |               |                  |         |         |
| 1-E21-0033                 | 14"x 12" Reducing Elbow to 12" Pipe | 80A0183          | N/A                               | C-F           | PT               | XI      |         |
| 1-E21-0032                 | 12" Pipe to 6" Weld-o-let           | 80A0183          | N/A                               | C-F           | PT               | XI      |         |
| 1-E21-0075                 | 6" Weld-o-let to 6" Pipe            | 80A0183          | N/A                               | C-F           | PT               | XI      |         |
| 1-E21-0076                 | 6" Pipe to Elbow                    | 80A0183          | N/A                               | C-F           | PT               | XI      |         |
| 1-E21-0077                 | 6" Elbow to Pipe                    | 80A0183          | N/A                               | C-F           | PT               | XI      |         |
| 1-E21-0078                 | 6" Pipe to Valve F025               | 80A0183          | N/A                               | C-F           | PT               | XI      |         |
| 1-E21-0031                 | 12" Pipe to Valve F005              | 80A0183          | N/A                               | C-F           | PT               | XI      |         |
| 1-E21-0030                 | 12" Valve F005 to Pipe              | 80A0186          | PY-12-80-CS                       | B-J           | UT               | XI      |         |
|                            |                                     | 80A0183          | N/A                               |               | PT               |         |         |





# PROGRAM PLAN AND SCHEDULE

5532 - PERRY

System: LPCS  
Document No. 80A4423  
Preservice Inspection

By:      / 9/84  
App: Sam / 9/84  
Rev. 3 Page 25 of 35

| COMPONENT IDENTIFICATION | COMPONENT DESCRIPTION         | PROCEDURE NUMBER | CALIBRATION BLOCK (If applicable) | CODE CATEGORY | CODE EXAM METHOD | ZONE NO. | REMARKS |
|--------------------------|-------------------------------|------------------|-----------------------------------|---------------|------------------|----------|---------|
| <b>PIPING WELDS</b>      |                               |                  |                                   |               |                  |          |         |
| Ref. Dwg. No. 04-02      |                               |                  |                                   |               |                  |          |         |
| 1-E21-0029               | 12" Pipe to Elbow             | 80A0186          | PY-12-80-CS                       | B-J           | UT               | XI       |         |
|                          |                               | 80A0183          | N/A                               |               | PT               |          |         |
| 1-E21-0028               | 12" Elbow to Pipe             | 80A0186          | PY-12-80-CS                       | B-J           | UT               | XI       |         |
|                          |                               | 80A0183          | N/A                               |               | PT               |          |         |
| 1-E21-0027               | 12" Pipe to Elbow             | 80A0186          | PY-12-80-CS                       | B-J           | UT               | XI       |         |
|                          |                               | 80A0183          | N/A                               |               | PT               |          |         |
| 1-E21-0026               | 12" Elbow to Elbow            | 80A0186          | PY-12-XX1-CS-F                    | B-J           | UT               | XI       |         |
|                          |                               | 80A0183          | N/A                               |               | PT               |          |         |
| 1-E21-0025               | 12" Elbow to Pipe             | 80A0186          | PY-12-80-CS                       | B-J           | UT               | XI       |         |
|                          |                               | 80A0183          | N/A                               |               | PT               |          |         |
| 1-E21-0024               | 12" Pipe to Penetration P-112 | 80A0186          | PY-12-80-CS                       | B-J           | UT               | XI       |         |
|                          |                               | 80A0183          | N/A                               |               | PT               |          |         |

# NES

## PROGRAM PLAN AND SCHEDULE

5532 - PERRY

By: RD / 9/84  
 App: jam / 9/84  
 Rev. 3 Page 26 of 35

| COMPONENT IDENTIFICATION   | COMPONENT DESCRIPTION          | PROCEDURE NUMBER | CALIBRATION BLOCK (If applicable) | CODE CATEGORY | CODE EXAM METHOD | ZONE NO. | REMARKS |
|----------------------------|--------------------------------|------------------|-----------------------------------|---------------|------------------|----------|---------|
| <b>PIPING WELDS</b>        |                                |                  |                                   |               |                  |          |         |
| <b>Ref. Dwg. No. 04-03</b> |                                |                  |                                   |               |                  |          |         |
| 1-E21-0023                 | Penetration P-112 to 12" Elbow | 80A0186          | PY-12-80-CS                       | B-J           | UT               | VIII     |         |
|                            |                                | 80A0183          | N/A                               |               | PT               |          |         |
| 1-E21-0022                 | 12" Elbow to Pipe              | 80A0186          | PY-12-80-CS                       | B-J           | UT               | VIII     |         |
|                            |                                | 80A0183          | N/A                               |               | PT               |          |         |
| 1-E21-0021                 | 12" Pipe to Elbow              | 80A0186          | PY-12-80-CS                       | B-J           | UT               | VIII     |         |
|                            |                                | 80A0183          | N/A                               |               | PT               |          |         |
| 1-E21-0020                 | 12" Elbow to Pipe              | 80A0186          | PY-12-80-CS                       | B-J           | UT               | VIII     |         |
|                            |                                | 80A0183          | N/A                               |               | PT               |          |         |
| 1-E21-0019                 | 12" Pipe to Elbow              | 80A0186          | PY-12-80-CS                       | B-J           | UT               | VIII     |         |
|                            |                                | 80A0183          | N/A                               |               | PT               |          |         |
| 1-E21-0018                 | 12" Elbow to Pipe              | 80A0186          | PY-12-80-CS                       | B-J           | UT               | VIII     |         |
|                            |                                | 80A0183          | N/A                               |               | PT               |          |         |
| 1-E21-0017                 | 12" Pipe to Elbow              | 80A0186          | PY-12-80-CS                       | B-J           | UT               | VIII     |         |
|                            |                                | 80A0183          | N/A                               |               | PT               |          |         |
| 1-E21-0016                 | 12" Elbow to Pipe              | 80A0186          | PY-12-80-CS                       | B-J           | UT               | VIII     |         |
|                            |                                | 80A0183          | N/A                               |               | PT               |          |         |



**PROGRAM PLAN AND SCHEDULE**  
5532 - PERRY

System: LPCS  
Document No. 80A4423  
Preservice Inspection

By: SD / 9/84  
App: Sam / 9/84  
Rev. 3 Page 27 of 35

| COMPONENT IDENTIFICATION                   | COMPONENT DESCRIPTION             | PROCEDURE NUMBER | CALIBRATION BLOCK (If applicable) | CODE CATEGORY | CODE EXAM METHOD | ZONE NO. | REMARKS |
|--|-----------------------------------|------------------|-----------------------------------|---------------|------------------|----------|---------|
| <b>PIPING WELDS</b><br>Ref. Dwg. No. 04-03 |                                   |                  |                                   |               |                  |          |         |
| 1-E212-0015A                               | 12" Pipe to Pipe                  | 80A0186          | PY-12-80-CS                       | B-J           | UT               | VIII     |         |
|  |                                   | 80A0183          | N/A                               |               | PT               |          |         |
| 1-E21-0015                                 | 12" Pipe to Elbow                 | 80A0186          | PY-12-80-CS                       | B-J           | UT               | VIII     |         |
|  |                                   | 80A0183          | N/A                               |               | PT               |          |         |
| 1-E21-0014                                 | 12" Elbow to Pipe                 | 80A0186          | PY-12-80-CS                       | B-J           | UT               | VIII     |         |
|  |                                   | 80A0183          | N/A                               |               | PT               |          |         |
| 1-E21-0013                                 | 12" Pipe to Elbow                 | 80A0186          | PY-12-80-CS                       | B-J           | UT               | VIII     |         |
|  |                                   | 80A0183          | N/A                               |               | PT               |          |         |
| 1-E21-0012A                                | 12" Pipe to Penetration PRB-3046  | 80A0186          | PY-12-80-CS                       | B-J           | UT               | VIII     |         |
|  |                                   | 80A0183          | N/A                               |               | PT               |          |         |
| 1-E21-0012                                 | 12" Elbow to Pipe                 | 80A0186          | PY-12-80-CS                       | B-J           | UT               | VIII     |         |
|  |                                   | 80A0183          | N/A                               |               | PT               |          |         |
| 1-E21-0011                                 | Penetration PRB-3046 to 12" Elbow | 80A0186          | PY-12-80-CS                       | B-J           | UT               | III      |         |
|  |                                   | 80A0183          | N/A                               |               | PT               |          |         |
| 1-E21-0010                                 | 12" Elbow to Pipe                 | 80A0186          | PY-12-80-CS                       | B-J           | UT               | III      |         |
|  |                                   | 80A0183          | N/A                               |               | PT               |          |         |

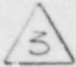


# PROGRAM PLAN AND SCHEDULE

5532 - PERRY

System: LPCS  
Document No. 80A4423  
Preservice Inspection

By:      / 9/84  
App: Sam / 9/84  
Rev. 3 Page 28 of 35

| COMPONENT IDENTIFICATION   | COMPONENT DESCRIPTION  | PROCEDURE NUMBER | CALIBRATION BLOCK (If applicable) | CODE CATEGORY | CODE EXAM METHOD | ZONE NO | REMARKS   |
|----------------------------|------------------------|------------------|-----------------------------------|---------------|------------------|---------|---|
| <b>PIPING WELDS</b>        |                        |                  |                                   |               |                  |         |   |
| <b>Ref. Dwg. No. 04-03</b> |                        |                  |                                   |               |                  |         |   |
| 1-E21-0009A                | 12" Pipe to Pipe       | 80A0186          | PY-12-80-CS                       | B-J           | UT               | III     |  |
|                            |                        | 80A0183          | N/A                               |               | PT               |         |   |
| 1-E21-0009                 | 12" Pipe to Valve F006 | 80A0186          | PY-12-80-CS                       | B-J           | UT               | III     |   |
|                            |                        | 80A0183          | N/A                               |               | PT               |         |   |
| 1-E21-0008                 | 12" Valve F006 to Pipe | 80A0186          | PY-12-80-CS                       | B-J           | UT               | III     |   |
|                            |                        | 80A0183          | N/A                               |               | PT               |         |   |
| 1-E21-0007                 | 12" Pipe to Elbow      | 80A0186          | PY-12-80-CS                       | B-J           | UT               | III     |   |
|                            |                        | 80A0183          | N/A                               |               | PT               |         |   |
| 1-E21-0006                 | 12" Elbow to Pipe      | 80A0186          | PY-12-80-CS                       | B-J           | UT               | III     |   |
|                            |                        | 80A0183          | N/A                               |               | PT               |         |   |
| 1-E21-0005                 | 12" Pipe to Valve F007 | 80A0186          | PY-12-80-CS                       | B-J           | UT               | III     |   |
|                            |                        | 80A0183          | N/A                               |               | PT               |         |   |
| 1-E21-0004                 | 12" Valve F007 to Pipe | 80A0186          | PY-12-80-CS                       | B-J           | UT               | III     |   |
|                            |                        | 80A0183          | N/A                               |               | PT               |         |   |
| 1-E21-0003                 | 12" Pipe to Elbow      | 80A0186          | PY-12-80-CS                       | B-J           | UT               | III     |   |
|                            |                        | 80A0183          | N/A                               |               | PT               |         |   |



**PROGRAM PLAN AND SCHEDULE**  
5532 - PERRY

System: LPCS  
Document No. 80A4423  
Preservice Inspection

By: ED / 9/84  
App: jam / 9/84  
Rev. 3 Page 29 of 35

| COMPONENT IDENTIFICATION | COMPONENT DESCRIPTION                      | PROCEDURE NUMBER | CALIBRATION BLOCK (If applicable) | CODE CATEGORY | CODE EXAM METHOD | ZONE NO | REMARKS |
|--------------------------|--|------------------|-----------------------------------|---------------|------------------|---------|---------|
|                          | <b>PIPING WELDS</b><br>Ref. Dwg. No. 04-03 |                  |                                   |               |                  |         |         |
| 1-E21-0002               | 12" Elbow to Pipe                          | 80A0186          | PY-12-80-CS                       | B-J           | UT               | III     |         |
|                          |  | 80A0183          | N/A                               |               | PT               |         |         |

System: LPCS  
 Document No. 80A4423  
 Preservice Inspection

# NES

## PROGRAM PLAN AND SCHEDULE

5532 - PERRY

By: ED / 9/84  
 App: jam / 9/84  
 Rev. 3 Page 30 of 35

| COMPONENT IDENTIFICATION          | COMPONENT DESCRIPTION               | PROCEDURE NUMBER | CALIBRATION BLOCK (If applicable) | CODE CATEGORY | CODE EXAM METHOD | ZONE NO. | REMARKS |
|-----------------------------------|-------------------------------------|------------------|-----------------------------------|---------------|------------------|----------|---------|
| <b>COMPONENT EXAMINATION</b>      |                                     |                  |                                   |               |                  |          |         |
| Ref. Dwg. No. 04-02, 04-03, 04-05 |                                     |                  |                                   |               |                  |          |         |
| 1-E21-F007-SEAM                   | 12" Valve E21-F007 Body Weld        | 80A0186          | FY-VALVE-XXI-CS                   | B-M-1         | UT               | III      |         |
|                                   |                                     | 80A0183          | N/A                               |               | PT               |          |         |
| 1-E21-F007-IS                     | 12" Valve E21-F007 Internal Surface | 80A0184          | N/A                               | B-M-2         | VT-1             | III      |         |
| 1-E21-F005-SEAM                   | 12" Valve E21-F005 Body Weld        | 80A0186          | PY-VALVE-XXI-CS                   | B-M-1         | UT               | XI       |         |
|                                   |                                     | 80A0183          | N/A                               |               | PT               |          |         |
| 1-E21-F006-B                      | 12" Valve E21-F006 Bolting          | 80A0184          | N/A                               | B-G-2         | VT-1             | III      |         |
| 1-E21-F006-IS                     | 12" Valve E21-F006 Internal Surface | 80A0184          | N/A                               | B-M-2         | VT-1             | III      |         |

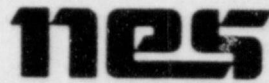


System: LPCS  
Document No. 80A-423  
Preservice Inspection

**PROGRAM PLAN AND SCHEDULE**  
5532 - PERRY

By: ED / 9/84  
App: Jam / 9/84  
Rev. 3 Page 31 of 35

| COMPONENT IDENTIFICATION | COMPONENT DESCRIPTION                               | PROCEDURE NUMBER | CALIBRATION BLOCK (If applicable) | CODE CATEGORY | CODE EXAM METHOD | ZONE NO. | REMARKS |
|--------------------------|---|------------------|-----------------------------------|---------------|------------------|----------|---------|
|                          | <b>LPCS PUMP C001</b><br><b>Ref. Dwg. No. 04-04</b> |                  |                                   |               |                  |          |         |
| 1-E21-C001-001           | Dished Head to Barrel Shell #1                      | 80A0183          | N/A                               | C-G           | PT               | XIV      |         |
| 1-E21-C001-002           | Barrel Shell #1 to Barrel Shell #2                  | 80A0183          | N/A                               | C-G           | PT               | XIV      |         |
| 1-E21-C001-033           | Barrel Shell #2 to Barrel Flange                    | 80A0183          | N/A                               | C-G           | PT               | XIV      |         |
| 1-E21-C001-004           | Head Flange to Head Shell                           | 80A0183          | N/A                               | C-G           | PT               | XIV      |         |
| 1-E21-C001-005           | 16" Discharge Flange to 16" Discharge Pipe          | 80A0183          | N/A                               | C-F           | PT               | XIV      |         |
| 1-E21-C001-006           | 16" Discharge Pipe to Head Shell                    | 80A0183          | N/A                               | C-G           | PT               | XIV      |         |
| 1-E21-C001-007           | 24" Suction Flange to 24" Suction Pipe              | 80A0183          | N/A                               | C-G           | PT               | XIV      |         |
| 1-E21-C001-011           | 24" Suction Pipe Longitudinal Seam                  | 80A0183          | N/A                               | C-G           | PT               | XIV      |         |



System: LPCS  
Document No. 80A4423  
Preservice Inspection

# PROGRAM PLAN AND SCHEDULE

5532 - PERRY

By: RAM / 9/84  
App: sam / 9/84  
Rev. 3 Page 32 of 35

| COMPONENT IDENTIFICATION   | COMPONENT DESCRIPTION          | PROCEDURE NUMBER | CALIBRATION BLOCK (If applicable) | CODE CATEGORY | CODE EXAM METHOD | ZONE NO. | REMARKS |
|--|--------------------------------|------------------|-----------------------------------|---------------|------------------|----------|---------|
| <b>BOLTING EXAMINATIONS</b><br><b>LPCS PUMP - C001</b><br><b>Ref. Dwg. No. 04-04</b> |                                |                  |                                   |               |                  |          |         |
| 1-E21-C001-008   | 24" Suction Pipe to Head Shell | 80A0183          | N/A                               | C-G           | PT               | XIV      |         |
| 1-E21-C001-009   | Head Shell to Head Cover       | 80A0183          | N/A                               | C-G           | PT               | XIV      |         |
| 1-E21-C001-010   | Head Shell Longitudinal Seam   | 80A0183          | N/A                               | C-G           | PT               | XIV      |         |



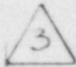


# PROGRAM PLAN AND SCHEDULE

5532 - PERRY

System: LPCS  
Document No. 80A4423  
Preservice Inspection

By: ED / 9/84  
App: Sam / 9/84  
Rev. 3 Page 33 of 35

| COMPONENT IDENTIFICATION    | COMPONENT DESCRIPTION | PROCEDURE NUMBER | CALIBRATION BLOCK (If applicable) | CODE CATEGORY | CODE EXAM METHOD | ZONE NO | REMARKS   |
|-----------------------------|-----------------------|------------------|-----------------------------------|---------------|------------------|---------|---|
| <b>BOLTING EXAMINATIONS</b> |                       |                  |                                   |               |                  |         |   |
| <b>LPCS PUMP - C001</b>     |                       |                  |                                   |               |                  |         |   |
| <b>Ref. Dwg. No. 04-04</b>  |                       |                  |                                   |               |                  |         |   |
| 1-E21-C001-1B               | Stud #1               | 80A0196          | PY-STUD-LPCS-2.25-SS              | C-D           | UT               | XIV     |  |
| 1-E21-C001-2B               | Stud #2               | 80A0196          | PY-STUD-LPCS-2.25-SS              | C-D           | UT               | XIV     |   |
| 1-E21-C001-3B               | Stud #3               | 80A0196          | PY-STUD-LPCS-2.25-SS              | C-D           | UT               | XIV     |   |
| 1-E21-C001-4B               | Stud #4               | 80A0196          | PY-STUD-LPCS-2.25-CS              | C-D           | UT               | XIV     |   |
| 1-E21-C001-5B               | Stud #5               | 80A0196          | PY-STUD-LPCS-2.25-CS              | C-D           | UT               | XIV     |   |
| 1-E21-C001-6B               | Stud #6               | 80A0196          | PY-STUD-LPCS-2.25-CS              | C-D           | UT               | XIV     |   |
| 1-E21-C001-7B               | Stud #7               | 80A0196          | PY-STUD-LPCS-2.25-CS              | C-D           | UT               | XIV     |   |
| 1-E21-C001-8B               | Stud #8               | 80A0196          | PY-STUD-LPCS-2.25-CS              | C-D           | UT               | XIV     |   |

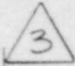
System: LPCS  
 Document No. 80A4423  
 Preservice Inspection

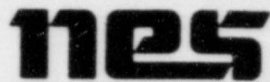
# NES

## PROGRAM PLAN AND SCHEDULE

5532 - PERRY

By: ED / 1 9/84  
 App: jam / 1 9/84  
 Rev. 3 Page 34 of 35

| COMPONENT IDENTIFICATION   | COMPONENT DESCRIPTION | PROCEDURE NUMBER | CALIBRATION BLOCK (If applicable) | CODE CATEGORY | CODE EXAM METHOD | ZONE NO. | REMARKS   |
|--|-----------------------|------------------|-----------------------------------|---------------|------------------|----------|---|
| <b>BOLTING EXAMINATIONS<br/>LPCS PUMP C001<br/>Ref. Dwg. No. 04-04</b> |                       |                  |                                   |               |                  |          |   |
| 1-E21-C001-9B  | Stud #9               | 80A0196          | PY-STUD-LPCS-2.25-SS              | C-D           | UT               | XIV      |  |
| 1-E21-C001-10B   | Stud #10              | 80A0196          | PY-STUD-LPCS-2.25-SS              | C-D           | UT               | XIV      |   |
| 1-E21-C001-11B   | Stud #11              | 80A0196          | PY-STUD-LPCS-2.25-SS              | C-D           | UT               | XIV      |   |
| 1-E21-C001-12B   | Stud #12              | 80A0196          | PY-STUD-LPCS-2.25-SS              | C-D           | UT               | XIV      |   |
| 1-E21-C001-13B   | Stud #13              | 80A0196          | PY-STUD-LPCS-2.25-SS              | C-D           | UT               | XIV      |   |
| 1-E21-C001-14B   | Stud #14              | 80A0196          | PY-STUD-LPCS-2.25-SS              | C-D           | UT               | XIV      |   |
| 1-E21-C001-15B   | Stud #15              | 80A0196          | PY-STUD-LPCS-2.25-SS              | C-D           | UT               | XIV      |   |
| 1-E21-C001-16B   | Stud #16              | 80A0196          | PY-STUD-LPCS-2.25-SS              | C-D           | UT               | XIV      |   |

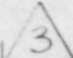


# PROGRAM PLAN AND SCHEDULE

5532 - PERRY

System: LPCS  
Document No. 80A4423  
Preservice Inspection

By: ED / 9/84  
App: Sam / 9/84  
Rev. 3 Page 35 of 35

| COMPONENT IDENTIFICATION   | COMPONENT DESCRIPTION | PROCEDURE NUMBER | CALIBRATION BLOCK (If applicable) | CODE CATEGORY | CODE EXAM METHOD | ZONE NO. | REMARKS   |
|--|-----------------------|------------------|-----------------------------------|---------------|------------------|----------|---|
| <b>BOLTING EXAMINATIONS<br/>LPCS PUMP C001<br/>Ref. Dwg. No. 04-04</b> |                       |                  |                                   |               |                  |          |   |
| 1-E21-C001-17B   | Stud #17              | 80A0196          | PY-STUD-LPCS-2.25-SS              | C-D           | UT               | XIV      |  |
| 1-E21-C001-18B   | Stud #18              | 80A0196          | PY-STUD-LPCS-2.25-SS              | C-D           | UT               | XIV      |   |
| 1-E21-C001-19B   | Stud #19              | 80A0196          | PY-STUD-LPCS-2.25-SS              | C-D           | UT               | XIV      |   |
| 1-E21-C001-20B   | Stud #20              | 80A0196          | PY-STUD-LPCS-2.25-SS              | C-D           | UT               | XIV      |   |
| 1-E21-C001-21B   | Stud #21              | 80A0196          | PY-STUD-LPCS-2.25-SS              | C-D           | UT               | XIV      |   |
| 1-E21-C001-22B   | Stud #22              | 80A0196          | PY-STUD-LPCS-2.25-SS              | C-D           | UT               | XIV      |   |
| 1-E21-C001-23B   | Stud #23              | 80A0196          | PY-STUD-LPCS-2.25-SS              | C-D           | UT               | XIV      |   |
| 1-E21-C001-24B   | Stud #24              | 80A0196          | PY-STUD-LPCS-2.25-SS              | C-D           | UT               | XIV      |   |