

January 15, 1986

Docket Nos. 50-321/366

LICENSEE: Georgia Power Company

FACILITIES: Hatch Units 1 and 2

SUBJECT: SUMMARY OF OCTOBER 24, 1985 MEETING
WITH GEORGIA POWER COMPANY

DISTRIBUTION

Docket File	DMuller
NRC PDR	EJordan
Local PDR	BGrimes
PD#2 Reading	CRS (10)
GRivenbark	OELD
NRC Participants	

A meeting with representatives of Georgia Power Company (GPC) and personnel from the NRC was held in Bethesda, Maryland on October 24, 1985. It was the third of a series of quarterly meetings that GPC and the NRC have agreed to hold to discuss Hatch Unit 1 and 2 licensing activities. Principal topics discussed were the Hatch Unit 1 outage schedule and planned activities, the Hatch Unit 2 schedule for its next outage, the status of equipment qualification at both units, organization changes at NRC and at GPC, the status of NRC review of GPC requests for amendments and other and their GPC submittals, the GPC procedure for developing and controlling amendment requests. A copy of the meeting agenda, copies of charts used in discussing agenda items and a list of meeting attendees are enclosed.

GPC stated that the Unit 1 outage, scheduled to start on November 30, 1985 is expected to last at least 15 weeks. The next Unit 2 outage is scheduled for September 1986 but may occur earlier if the high capacity factor experienced up to now for the current cycle continues. It was agreed that the next quarterly meeting will be held at the Hatch plant on Thursday, January 23, 1986 during the Unit 1 outage.

A list of meeting attendees and lists of the GPC submittals discussed are enclosed.

Original signed by/

George Rivenbark, Project Manager
BWR Project Directorate #2
Division of BWR Licensing

Enclosures:
As stated

cc w/enclosures:
See next page

DBL:PD#2
SNO:rc
01/15/86

DBL:PD#2
GRivenbark:rc
01/15/86

8601280364 860115
PDR ADOCK 05000321
P PDR

Mr. J. T. Beckham, Jr.
Georgia Power Company

Edwin J. Hatch Nuclear Plant,
Units Nos. 1 and 2

cc:
G. F. Trowbridge, Esq.
Shaw, Pittman, Potts and Trowbridge
1800 M Street, N.W.
Washington, D.C. 20036

Mr. L. T. Gucwa
Engineering Department
Georgia Power Company
P. O. Box 4545
Atlanta, Georgia 30302

Mr. H. C. Nix, Jr., General Manager
Edwin J. Hatch Nuclear Plant
Georgia Power Company
P. O. Box 442
Baxley, Georgia 31513

Mr. Louis B. Long
Southern Company Services, Inc.
P. O. Box 2625
Birmingham, Alabama 35202

Resident Inspector
U.S. Nuclear Regulatory Commission
Route 1, P. O. Box 279
Baxley, Georgia 31513

Regional Administrator, Region II
U.S. Nuclear Regulatory Commission,
101 Marietta Street, Suite 3100
Atlanta, Georgia 30303

Mr. Charles H. Badger
Office of Planning and Budget
Room 610
270 Washington Street, S.W.
Atlanta, Georgia 30334

Mr. J. Leonard Ledbetter, Commissioner
Department of Natural Resources
270 Washington Street, N.W.
Atlanta, Georgia 30334

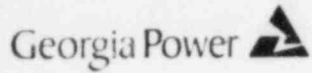
Chairman
Appling County Commissioners
County Courthouse
Baxley, Georgia 31513

October 24, 1985 Meeting With GPC

On Hatch Unit 1 and 2 Activities

List of Attendees
(Quarterly Meeting)

G. Rivenbark	NRC-DL
D. Muller	NRC-DSI
V. Panciera	NRC Region II
S. Tipps	GPC-Hatch
R. Baker	GPC-Nuclear Safety & Licensing
L. Gucwa	GPC-Nuclear Safety & Licensing
J. Stolz (part time)	NRC-DL



October 21, 1985

NRC- GPC QUARTERLY LICENSING ISSUES

MEETING AGENDA

- I. Hatch 1 Outage Schedule - GPC
- II. Hatch 2 Outage Schedule - GPC
- III. Outstanding Submittals at NRC
- IV. Environmental Qualification Status - GPC
- V. NRC Organization Changes - NRC
- VI. GPC Organization Description - GPC
- VII. GPC - NRC Region II Avenues of Communication - GPC
- VIII. Technical Specifications Surveillance
Improvements - GPC
- IX. Configuration Control - GPC
- X. General Discussion - All

UNIT 1 REFUELING OUTAGE NO. 9

PRELIMINARY OUTAGE WORKSCOPE

ANTICIPATED SHUTDOWN: NOV. 30, 1985

* REACTOR

- * REFUEL FOR 15-MONTH RUN CYCLE
- * PERFORM 10-YEAR IN-SERVICE INSPECTIONS (ISI)
 - CORE SPRAY, JET PUMP BEAMS, INCORE DRY TUBES, JET PUMP SENSING LINES
- * INSPECT RECIRCULATION PIPING AND PERFORM WELD OVERLAYS AS REQUIRED
 - ANTICIPATE 15 TO 18 OVERLAYS *100% inspection*
- * PERFORM INDUCTION HEAT STRESS IMPROVEMENT (IHSI) ON ALL WELDS NOT PREVIOUSLY OVERLAYED ON RECIRC, RHR, AND RWCU PIPING IN DRYWELL
 - NOMINALLY 100 WELDS *(130 welds total)*

* DRYWELL / TORUS

- * PERFORM LOCAL LEAK RATE TESTING (LLRT)
- * PERFORM AN INTEGRATED LEAK RATE TEST (ILRT)
- * COMPLETE 10-YEAR ISI PROGRAM
 - ALL D/W RECIRC WELDS, RWCU WELDS TO O/B ISOL VLV (1G31-F004), AND RHR WELDS TO 1E11-F060

* TURBINE / GENERATOR

- * PERFORM ROUTINE MAINTENANCE
- * PERFORM PREVENTIVE MAINTENANCE ON VALVES (SV, CV, CIV)
- * REPLACE TWO WHEELS (& BUCKETS) ON 'B' LP TURBINE
- * PERFORM BORESONIC INSPECTION OF ALL WHEELS ON 'A' AND 'B' LP TURBINES
- * INSPECT TURNING GEAR ASSEMBLY

* CONDENSATE / FEEDWATER SYSTEM

- * PERFORM FULL PM ON 1A FEEDWATER PUMP/TURBINE
- * PERFORM ROUTINE TUBE CHECKS (CONDENSER, FEEDWATER HEATERS)
- * INSPECT FEEDWATER HEATER INTERNALS
- * INSTALL CONDENSER BAFFLE

* SURVEILLANCE TESTS

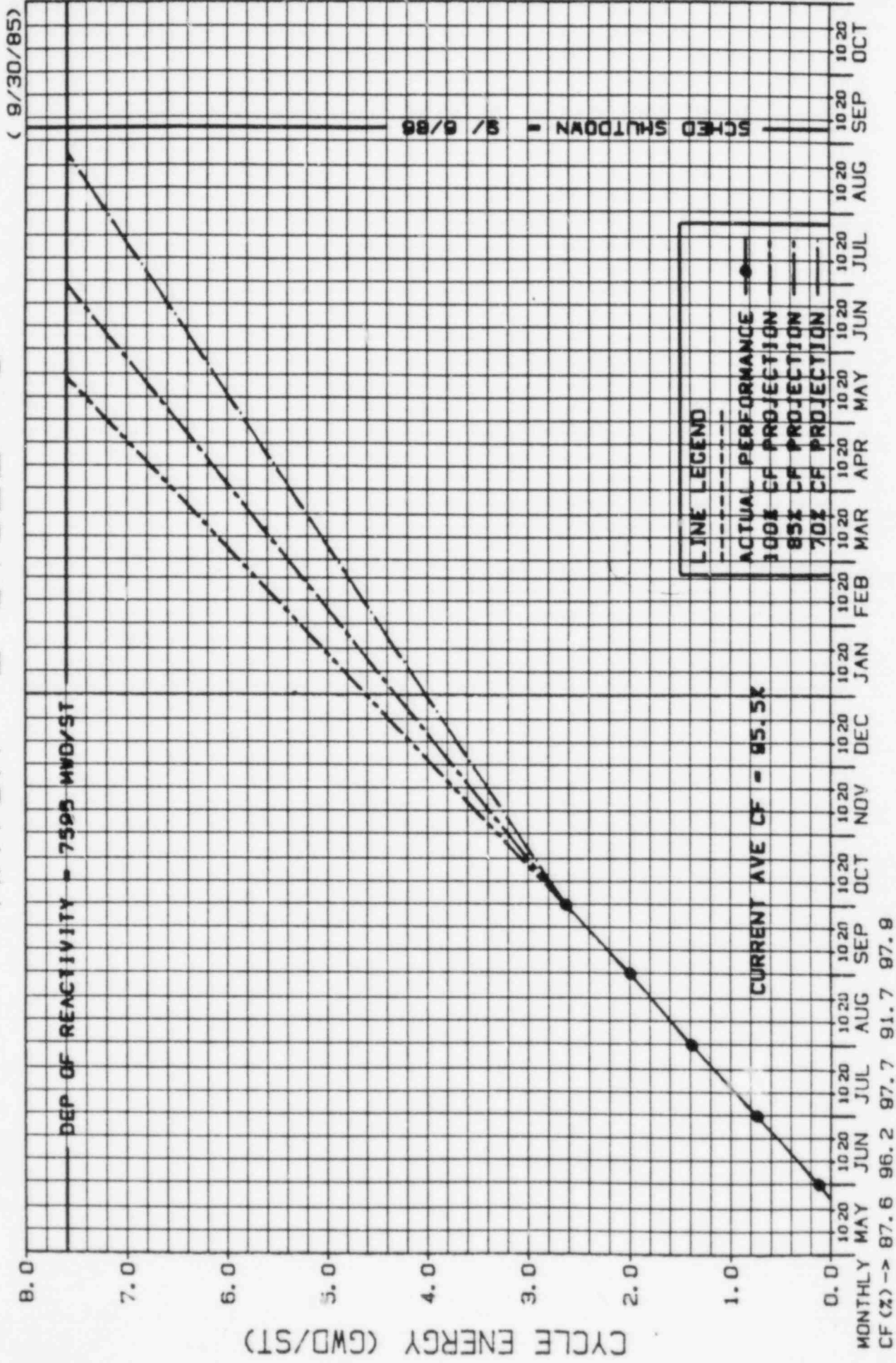
- * PERFORM ALL REQUIRED SURVEILLANCE FOR A 15-MONTH RUN CYCLE

* MAINTENANCE OUTAGE ACTIVITIES

- * APPROX 700 MAINTENANCE WORK ORDERS (MWO'S) IDENTIFIED AT PRESENT
- * ANTICIPATE APPROX 1500 MWO'S FOR ENTIRE OUTAGE

- * MODIFICATIONS: 79 DCR'S PROPOSED
 - * 38 DCR'S TO MEET LICENSING COMMITMENTS
 - APPENDIX R (14 DCR'S)
 - IEB 79-OIB REQUIREMENTS (14 DCR'S)
 - ATTS
 - H₂O₂ ANALYZERS
 - HFA RELAY COIL CHANGEOUT (78 RELAYS)
 - STANDBY GAS TREATMENT SYSTEM FAST-ACTING DAMPER INSTALLATION
 - * 41 DCR'S FOR PLANT IMPROVEMENTS
 - TURBINE WATER INDUCTION
 - RWCU IMPROVEMENTS
 - TURBINE/GENERATOR PROTECTION
 - DIESEL/GENERATOR CONTROL TIMERS
 - OXYGEN ANALYZERS

HATCH -2 CYCLE- 6



1985

1986

OUTSTANDING LICENSING ISSUES WITH SUBMITTAL AT NRC

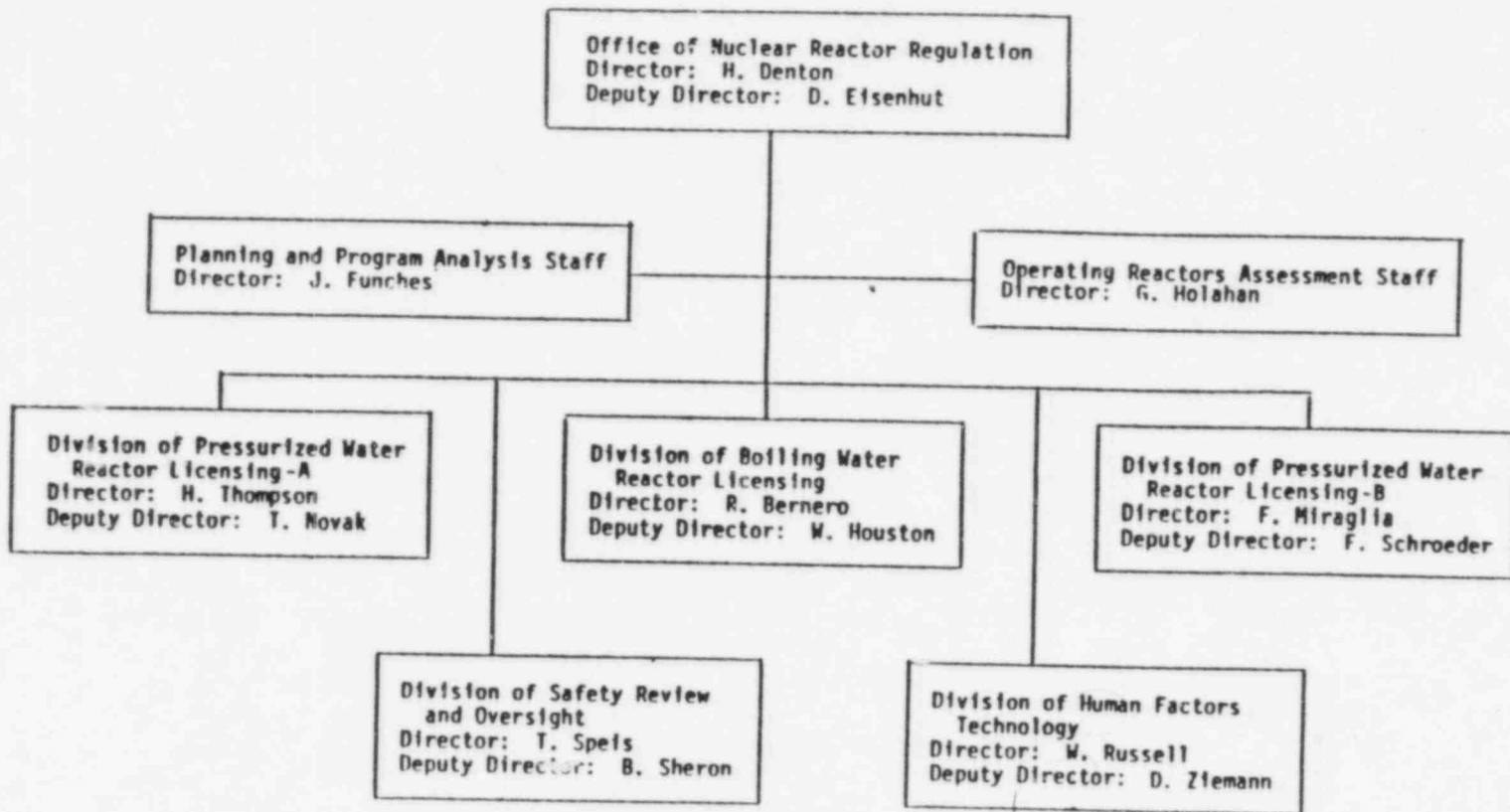
LETTER DATE	UNIT	SUBJECT
/ /		* ADDITIONAL WORK BY GPC REQUIRED ON THIS ITEM BEFORE FINAL RESOLUTION
/ /		O APPROVAL OF ITEM REQUIRED FOR UPCOMING OUTAGE
/ /		C ITEM CLOSED SINCE LAST REPORT
01/26/77	321	ILRT CHANGES
08/30/77	321	ALLOW USE OF MODIFIED CRANE TO LIFT SPENT FUEL CASK
10/03/78	321	* CHANGE PSW, DIESEL REQUIREMENTS TO REFLECT SWING STATUS OF D/G 1B
03/05/79	321	REMOVE REFERENCE TO OUTDATED VERSION OF APPENDIX J
09/27/82	366	* BUILDING SETTLEMENT SURVEILLANCE - SUBMIT RESULTS OF ENGINEERING ANALYSIS
04/15/83	321,366	GENERIC LETTER 82-33 - REQUIREMENTS FOR EMERGENCY RESPONSE CAPABILITY
06/15/83	321,366	DRYWELL PURGE, AND VENT CHANGES FOR 18" ISOLATION VALVES (SEE LETTER 8-5137)
12/21/83	321,366	REQUIRE H2O2 ANALYZER CONTINUOUS OPERATION AFTER LOCA ONLY
04/23/84	366	* ATWS RPT CLARIFICATIONS
09/05/84	366	PRIMARY CONTAINMENT ISOLATION OF PURGE AND VENT ON HI RAD
09/12/84	321	* OPERABILITY DEFINITION
09/19/84	366	* FRACTURE MECHANICS ANALYSIS PER GENERIC LETTER 81-11 - FEEDWATER NOZZLE
11/09/84	321,366	* DIESEL GENERATOR SPECIFICATIONS
01/10/85	366	REQUEST TO RESCIND CONFIRMATORY ORDER ON REACTOR COOLANT SYSTEM STAINLESS STEEL PIPE
01/11/85	321	PROPOSED CHANGE TO TECHNICAL SPECIFICATIONS - DELETION OF DEFINITION OF "CUMULATIVE DOWNTIME"
01/17/85	321	HNP-1 PROPOSED FIRE PROTECTION TECHNICAL SPECIFICATIONS - MODIFICATION TO THE NUMBER AND LOCATION OF FIRE DETECTORS
05/06/85	321,366	PROPOSED MODIFICATIONS AND SCHEDULE FOR REACTOR WATER LEVEL INSTRUMENTATION IMPROVEMENTS - GENERIC LETTER 84-23

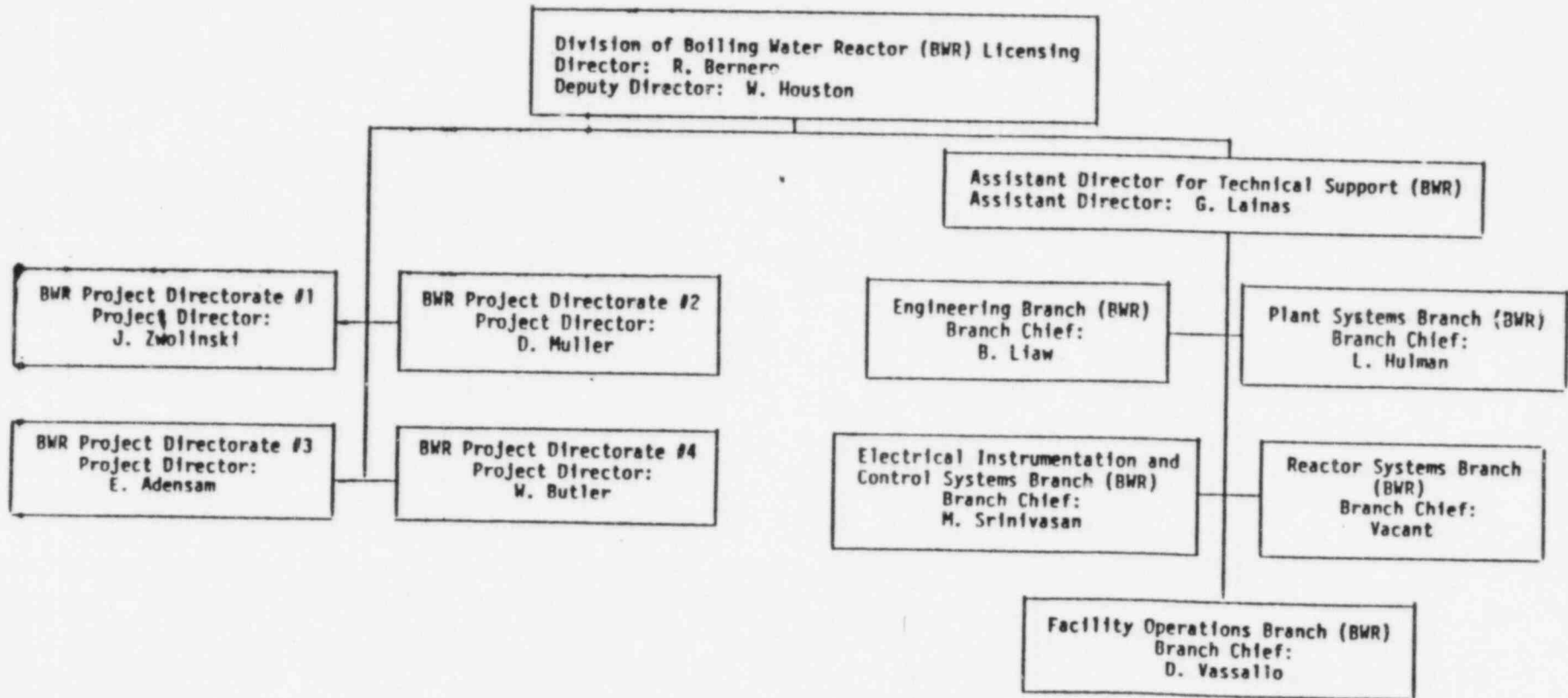
OUTSTANDING LICENSING ISSUES WITH SUBMITTAL AT NRC

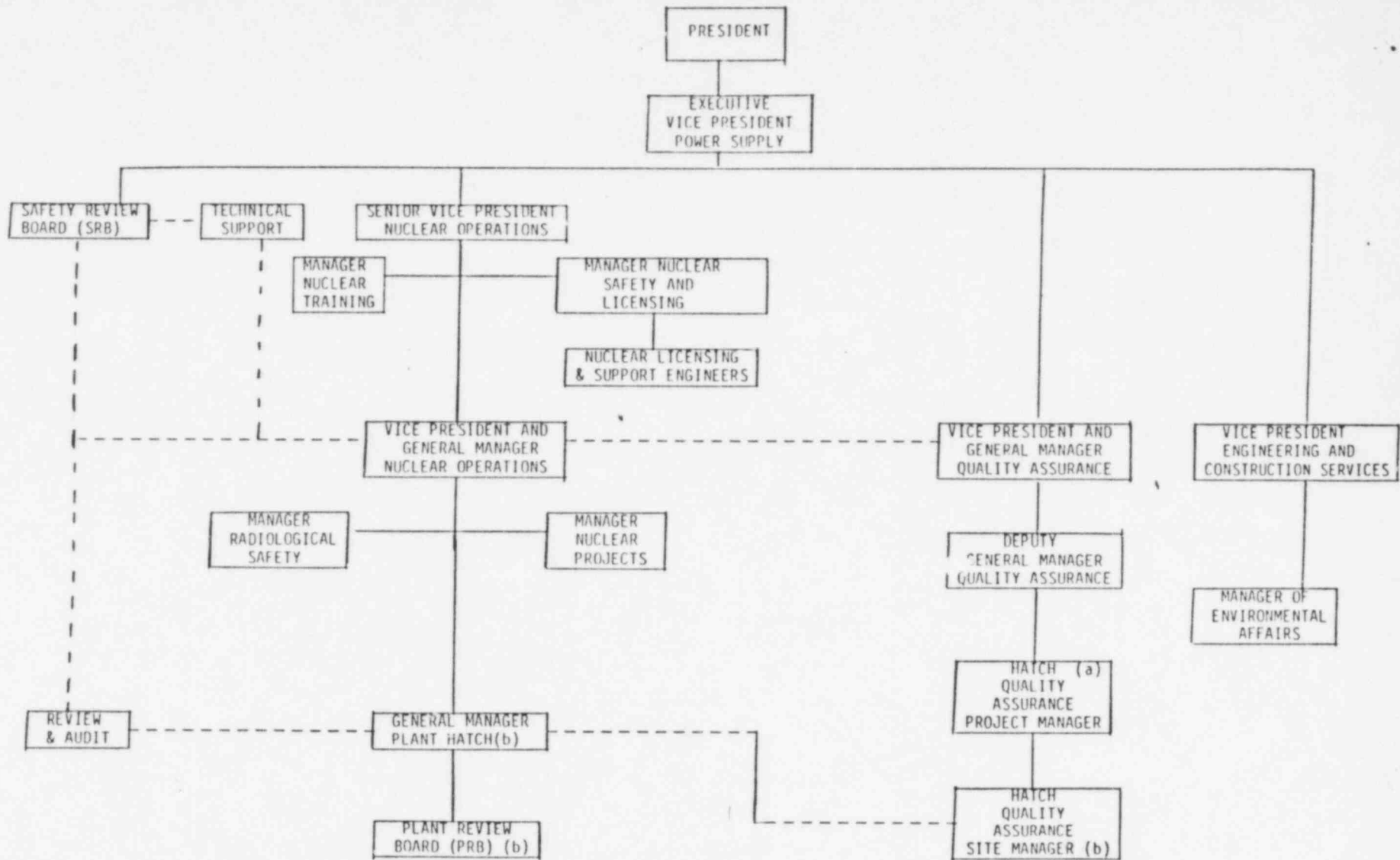
LETTER DATE	UNIT	SUBJECT
05/09/85	366	REQUEST FOR TECHNICAL SPECIFICATION RELIEF - OVERCURRENT PROTECTION FOR CONTAINMENT PENETRATIONS
05/13/85	321,366	REQUEST FOR ADDITIONAL INFORMATION - SEISMIC SPECTRA BROADENING
05/20/85	321	CHANGE TO TECHNICAL SPECIFICATIONS - DELETE REPORTING REQUIREMENTS FOR PRIMARY COOLANT AND SECONDARY CONTAINMENT LEAK RATE
06/03/85	321,366	* REQUEST FOR ADDITIONAL INFORMATION GENERIC LETTER 83-28 - SALEM EVENT - SCRAM BREAKER FAILURE
06/24/85	321	EDITORIAL CHANGE TO THE TECHNICAL SPECIFICATIONS TO CORRECT A TYPOGRAPHICAL ERROR - HPCI SURVEILLANCE
06/25/85	321,366	INSERVICE TESTING - INSERVICE INSPECTION PROGRAMS UPDATE
07/18/85	321	O REQUEST FOR CODE RELIEF ON 10 YEAR INSERVICE INSPECTION REQUIREMENTS
07/19/85	321,366	O SCHEDULE FOR SUBMITTAL FOR PLAN OF ANTICIPATED TRANSIENTS WITHOUT SCRAM MODIFICATIONS FOR NON-SAFETY RELATED EQUIPMENT
07/24/85	321	O CHANGE TO TECHNICAL SPECIFICATIONS - ANALOG TRIP TRANSMITTER SYSTEM
07/26/85	321	REQUEST TO REVISE TECHNICAL SPECIFICATIONS - ADD SPECIFICATION AND TABLE ADDRESSING COMPONENT CYCLIC AND TRANSIENT LIMITS
08/01/85	321	O REQUEST FOR TECHNICAL SPECIFICATION RELIEF - 10 YEAR REQUIREMENTS INSERVICE INSPECTION
08/02/85	366	REQUEST TO REVISE TECHNICAL SPECIFICATIONS - HYDROGEN RECOMBINER HEATER INTEGRITY TEST SPECIFICATION
08/20/85	321,366	PROPOSED SURVEILLANCE TECHNICAL SPECIFICATIONS FOR FAST ACTING DAMPERS FOR PROTECTION OF SGTS - DOCR 85-15
08/20/85	321	O PROPOSED CHANGES TO THE TECHNICAL SPECIFICATIONS FOR HIGH RADIATION ISOLATION OF PURGE AND VENT VALVES - DOCR 85-20
08/22/85	321	O REQUEST FOR APPROVAL OF ANOTHER CYCLE WITH CORE SPRAY SPARGER CLAMP
08/23/85	321,366	O CHANGE TO TECHNICAL SPECIFICATIONS - DRYWELL PNEUMATIC ISOLATION VALVES - (DOCR 84-29R1, 85-21)

OUTSTANDING LICENSING ISSUES WITH SUBMITTAL AT NRC

LETTER DATE	UNIT	SUBJECT
08/23/85	321	O PROPOSED CHANGES FOR TECHNICAL SPECIFICATION - ADS LOGIC - DOCR 85-19
09/13/85	321,366	REQUEST TO REVISE TECHNICAL SPECIFICATIONS - SCRAM DISCHARGE VOLUME VENT AND DRAIN VALVE CLOSURE TIME







a CURRENTLY VACANT
 b ONSITE PERSONNEL

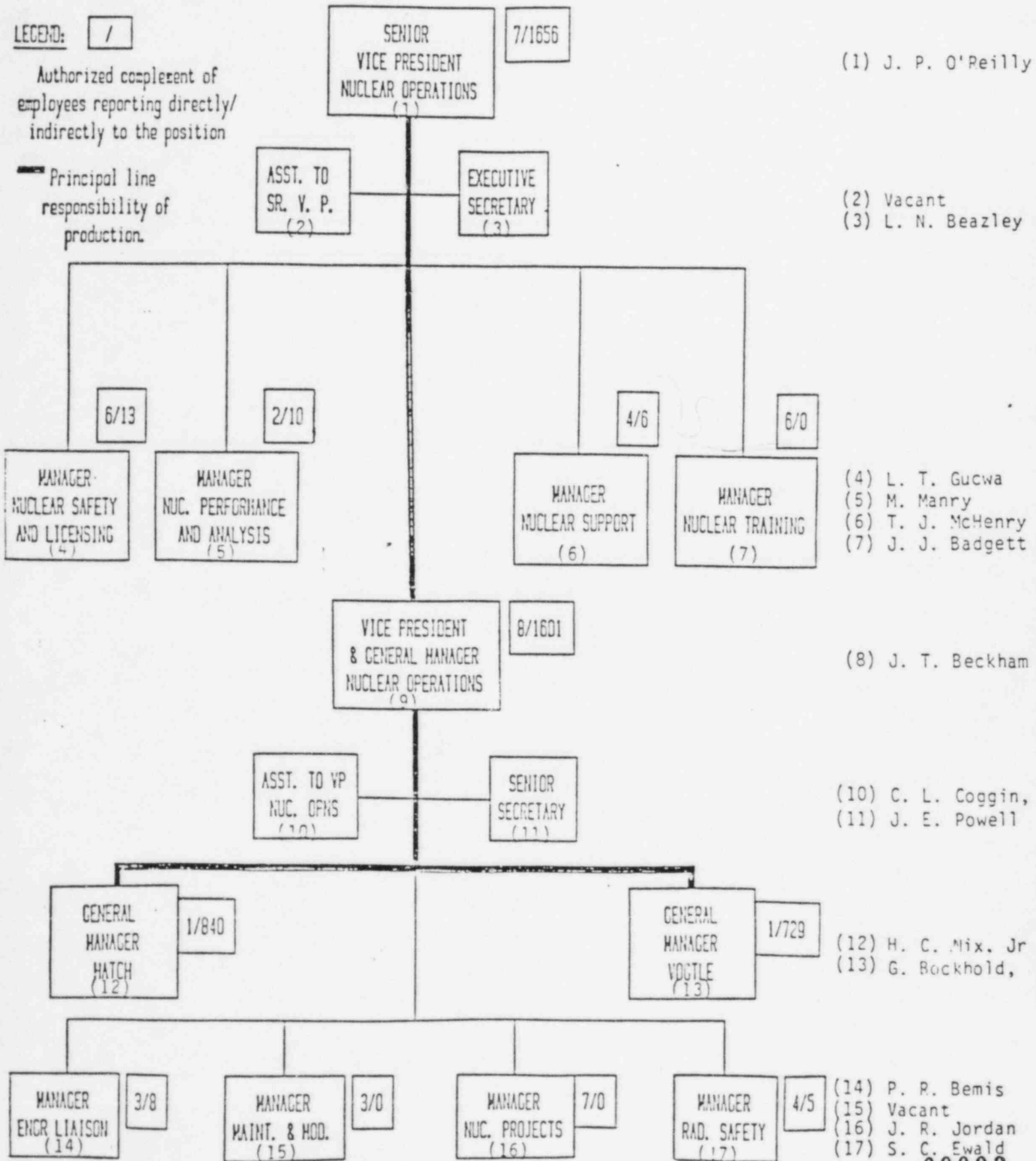
LINES OF RESPONSIBILITY
 LINES OF COMMUNICATION

FIGURE 6.2.1-1 OFFSITE ORGANIZATION

LEGEND: /

Authorized complement of employees reporting directly/indirectly to the position

Principal line responsibility of production.



(1) J. P. O'Reilly

(2) Vacant
(3) L. N. Beazley

(4) L. T. Gucwa
(5) M. Manry
(6) T. J. McHenry
(7) J. J. Badgett

(8) J. T. Beckham

(10) C. L. Coggin,
(11) J. E. Powell

(12) H. C. Mix, Jr
(13) G. Bockhold,

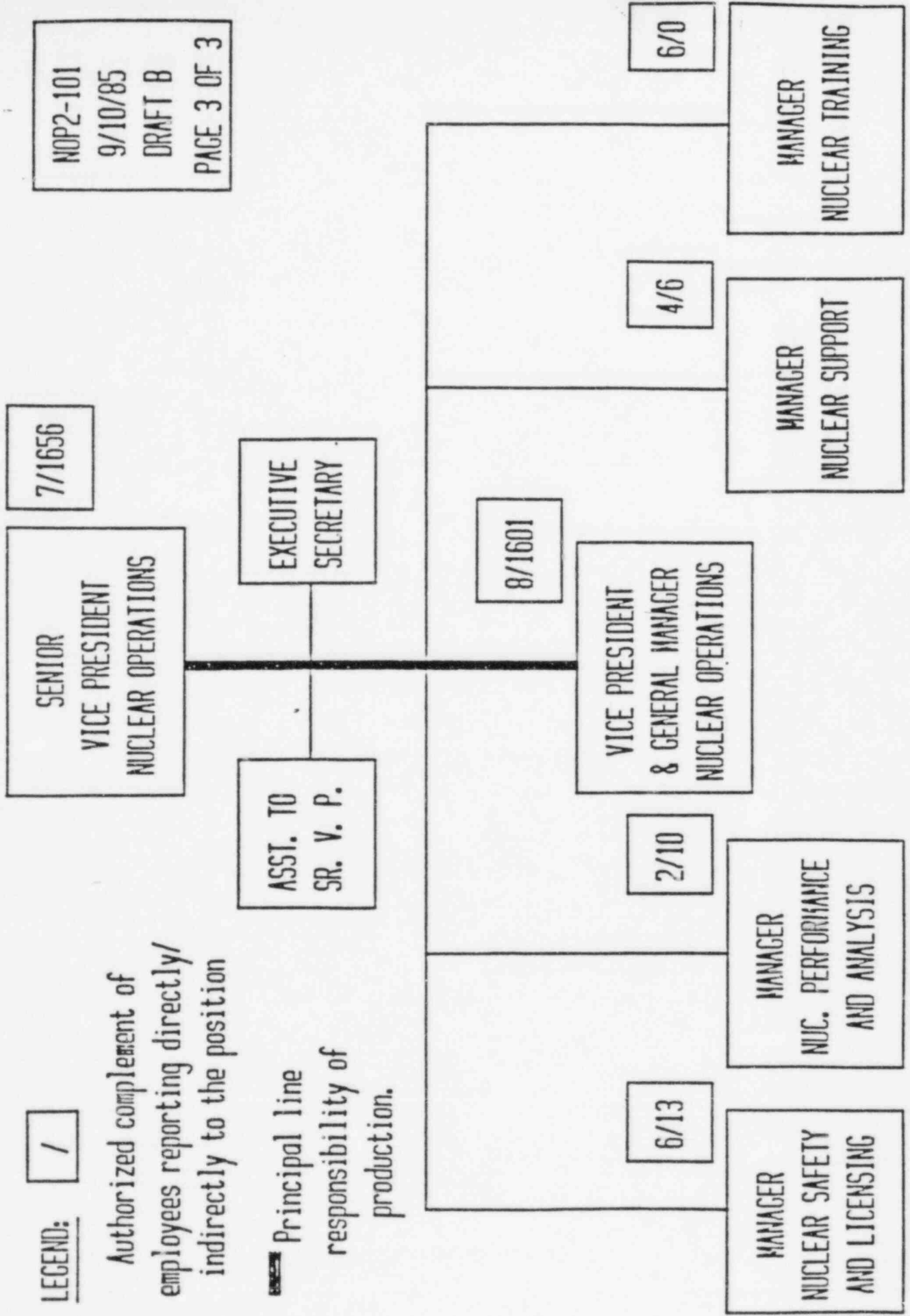
(14) P. R. Bemis
(15) Vacant
(16) J. R. Jordan
(17) S. C. Ewald

LEGEND: [/]

Authorized complement of employees reporting directly/indirectly to the position

— Principal line responsibility of production.

NOP2-101
9/10/85
DRAFT B
PAGE 3 OF 3



8/1601
VICE PRESIDENT
& GENERAL MANAGER
NUCLEAR OPERATIONS

SENIOR
SECRETARY

ASST. TO VP
NUC. OPNS

1/729
GENERAL
MANAGER
VOGTLE
NOTE 1

1/840
GENERAL
MANAGER
HATCH
NOTE 1

4/5
MANAGER
RAD. SAFETY

7/0
MANAGER
NUC. PROJECTS

3/0
MANAGER
MAINT. & MOD.

3/8
MANAGER
ENGR LIAISON
NOTE 2

LEGEND: [] /

Authorized complement of employees reporting directly/indirectly to the position

Principal line responsibility of production.

00015

NOTE 1: Included in plant complements
NOTE 2: Refer to NOP2-107 text for details of the support staff.

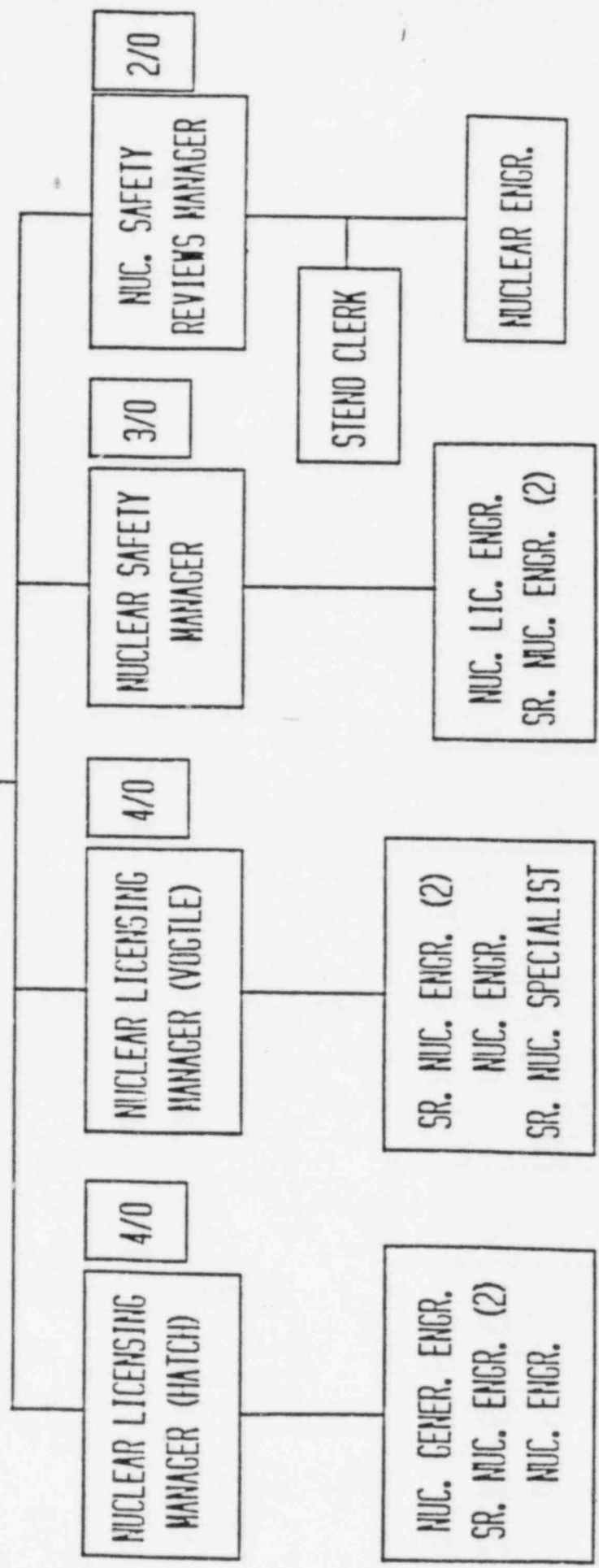
6/13
 MANAGER
 NUCLEAR SAFETY
 AND LICENSING

LEGEND: [/]

Authorized complement of
 employees reporting directly/
 indirectly to the position

SECRETARY II

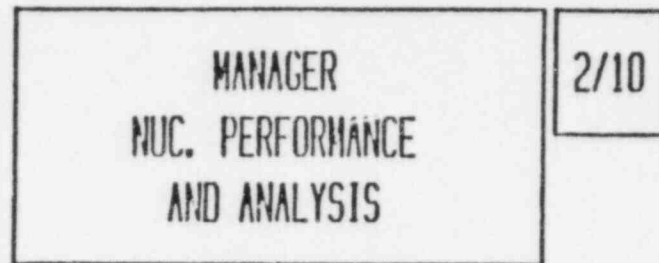
GENERAL CLERK



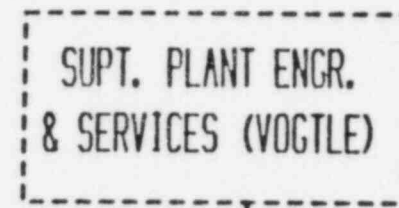
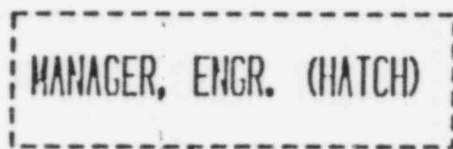
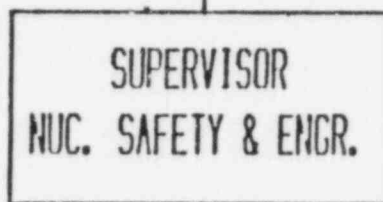
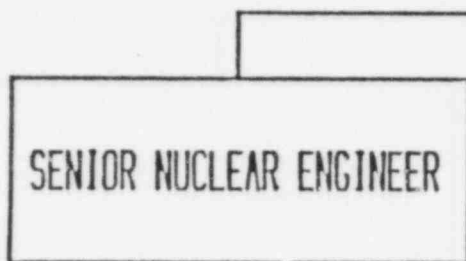
LEGEND:



Authorized complement of employees reporting directly/indirectly to the position

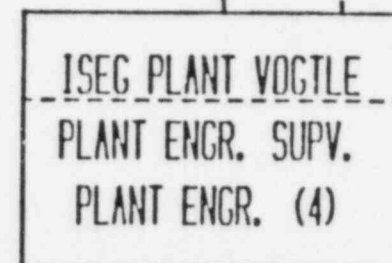
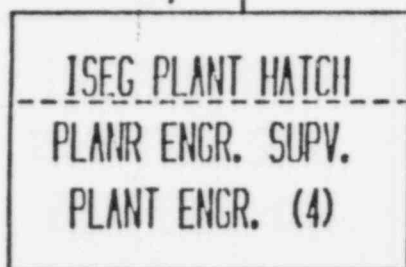


NOP2-104
9/10/85
DRAFT B
PAGE 3 OF 3



NOTE 1

NOTE 1



00032

NOTE 1: The ISEG'S (Independent Safety Engineering Groups) report administratively to the respective plant management and functionally to the Supv. Nuc. Safety & Engr.

MANAGER
NUCLEAR SUPPORT

4/6

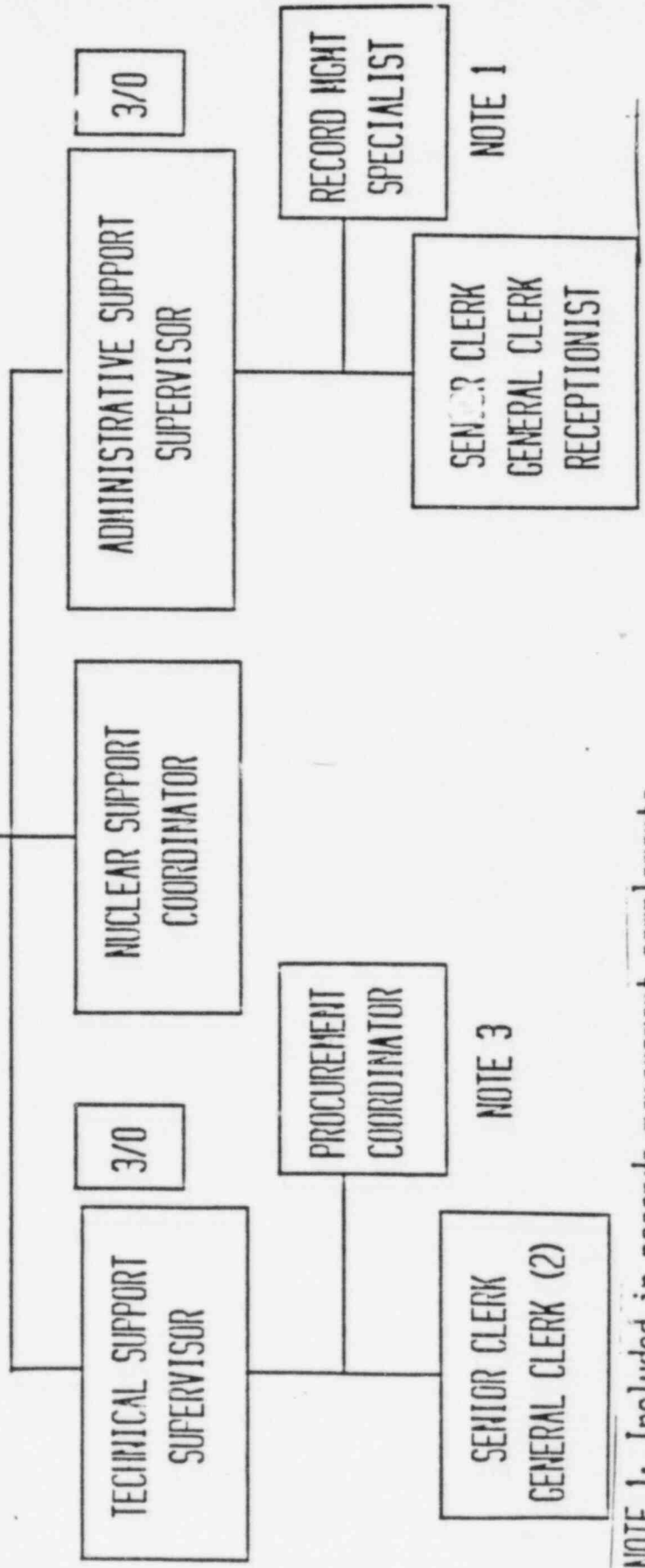
SECRETARY II

OTHER
COMPANY
SUPPORT

NOTE 2

LEGEND: [/]

Authorized complement of employees reporting directly/indirectly to the position



NOTE 1: Included in records management complements

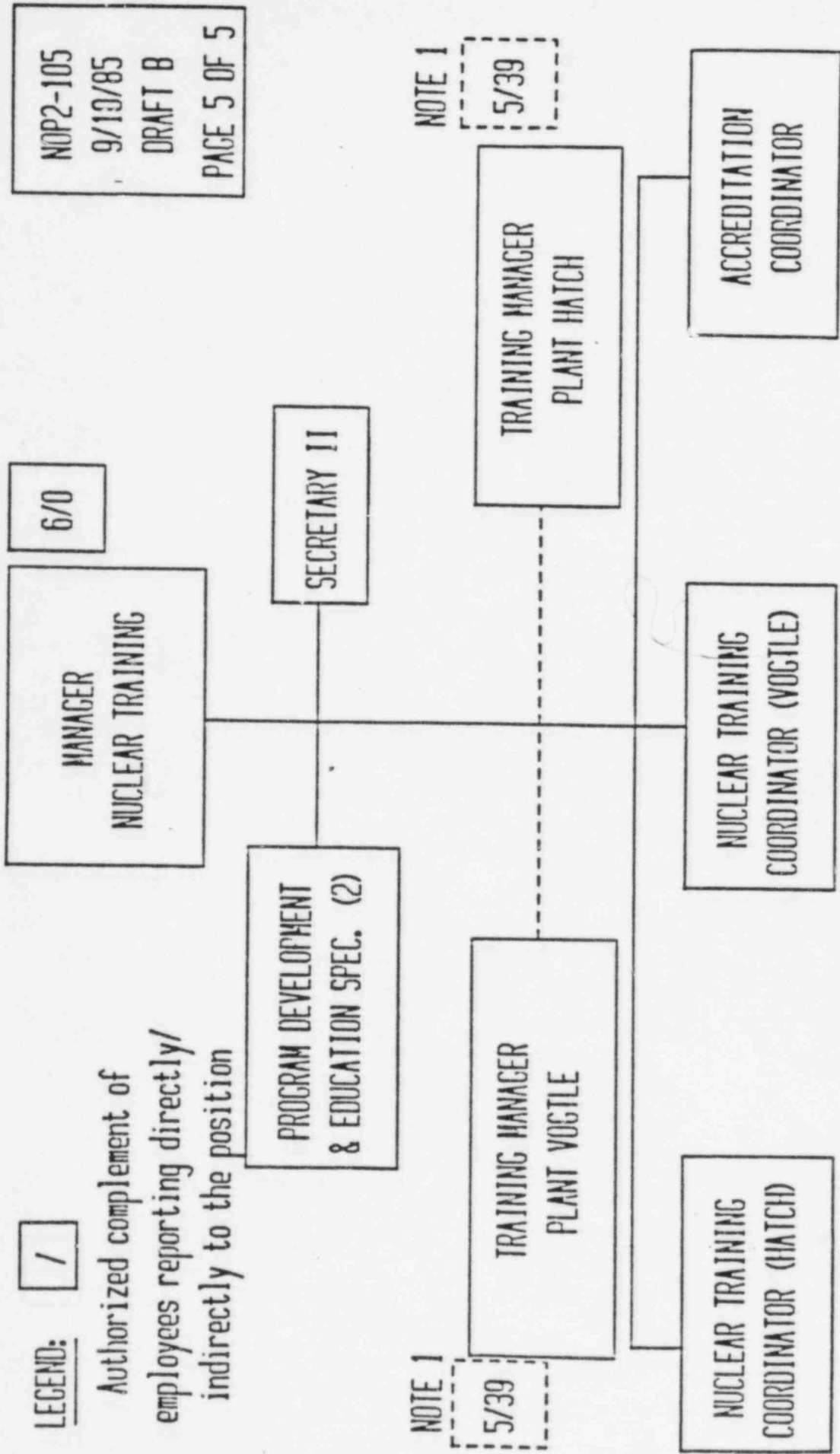
NOTE 2: See page 11 of 11

NOTE 3: Included in procurement complement.

LEGEND:



Authorized complement of employees reporting directly/indirectly to the position



NOP2-105
9/19/85
DRAFT B
PAGE 5 OF 5

NOTE 1

5/39

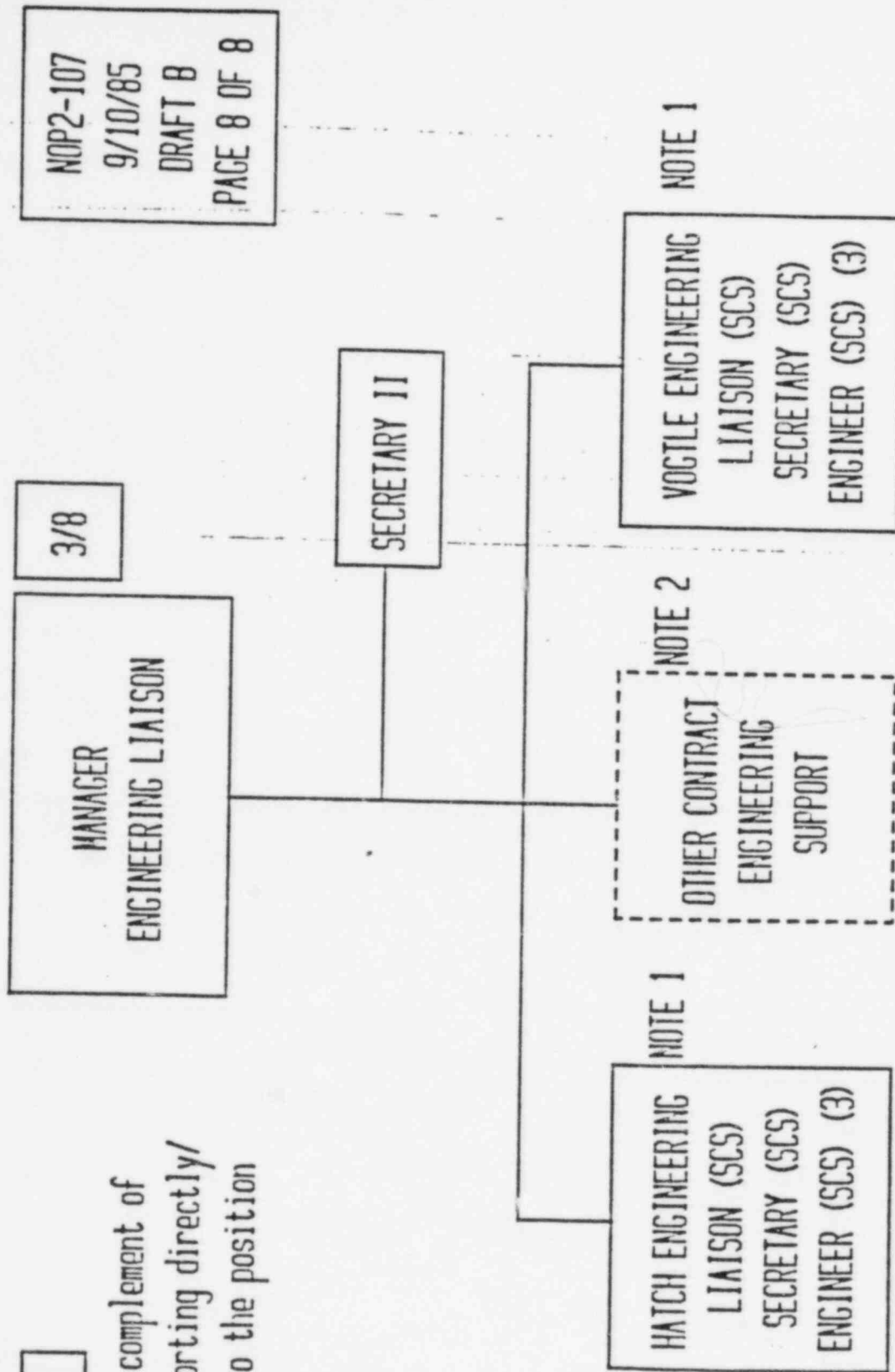
NOTE 1

5/39

NOTE 1: Plant staff training managers receive advice and programmatic direction from the Mgr. Nuc. Training; Staffs are in plant complements

LEGEND: [/]

Authorized complement of employees reporting directly/indirectly to the position



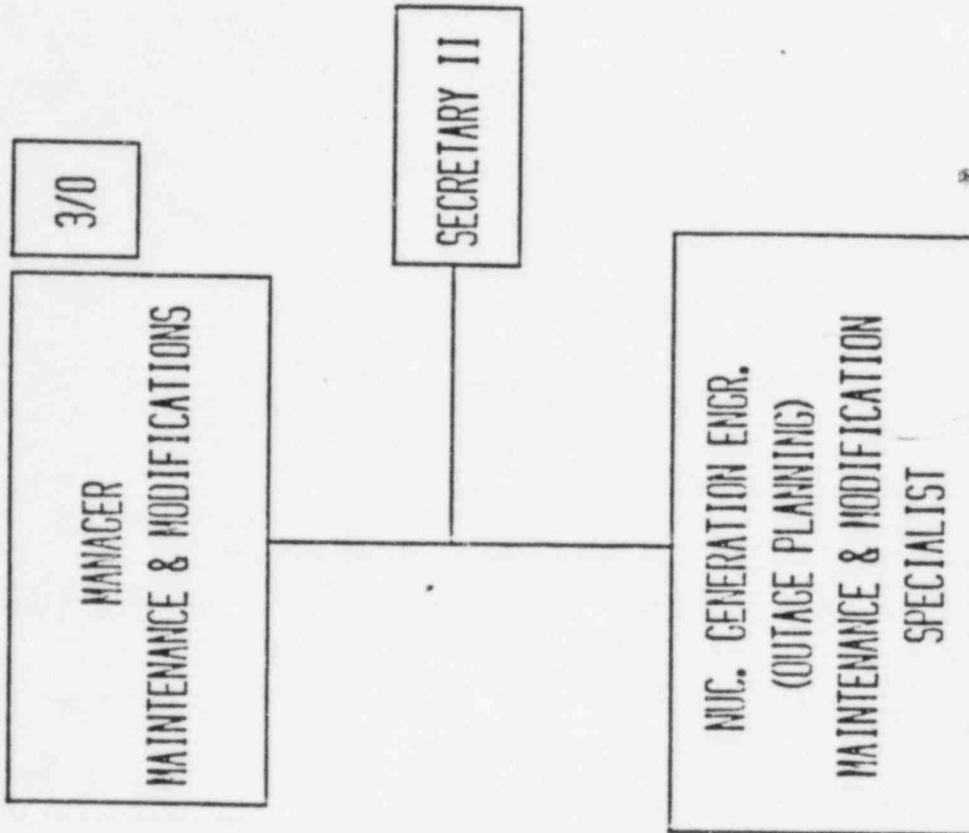
NOTE 1: Included in Georgia Power and SCS complement

NOTE 2: Refer to NOP2-107 text for details of these support staffs.

LEGEND:



Authorized complement of
employees reporting directly/
indirectly to the position



NOP2-110
9/10/85
DRAFT B
PAGE 4 OF 4

LEGEND:

/

Authorized complement of
employees reporting directly/
indirectly to the position

MANAGER
NUCLEAR PROJECTS

7/0

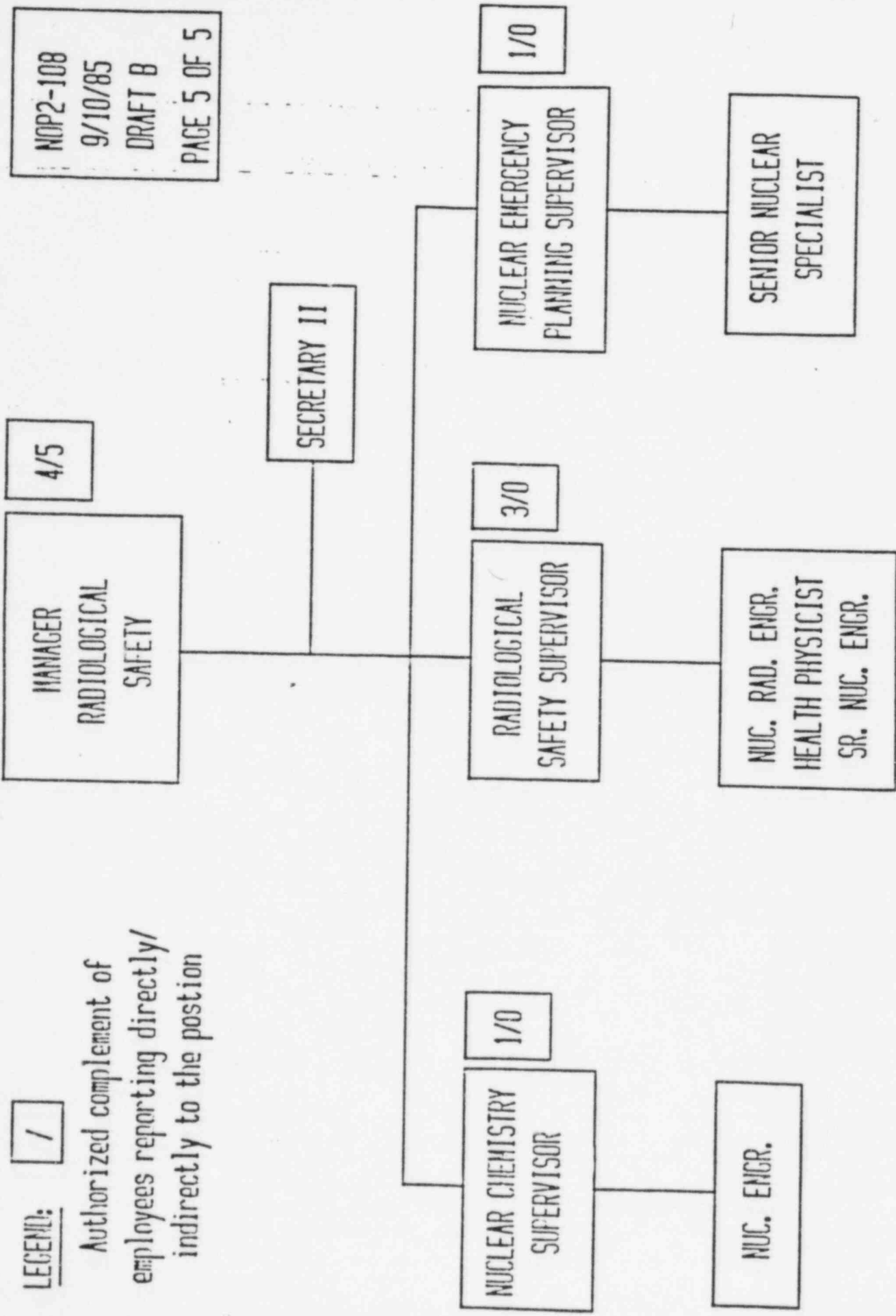
SECRETARY II

SR. NUC. PROJECTS ENGR.
NUC. PROJECTS ENGR.
SR. NUC. ENGR. (3)
SENIOR ENGINEERING ASSOCIATE

NOP2-109
9/10/85
DRAFT B
PAGE 3 OF 3

08000

LEGEND: [/]
 Authorized complement of employees reporting directly/indirectly to the position



NOP2-108
 9/10/85
 DRAFT B
 PAGE 5 OF 5