

U.S. NUCLEAR REGULATORY COMMISSION

REGION I

Meeting Report No. 50-423/85-73

Docket No. 50-423

Licensee: Northeast Nuclear Energy Company

Facility: Millstone Unit 3

Meeting At: Waterford, Connecticut

Date: November 5, 1985

Prepared By: R. J. Summers
R. J. Summers, Project Engineer
Reactor Projects Section 3B

11/12/85
date

Approved By: E. C. McCabe
E. C. McCabe, Chief,
Reactor Projects, Section 3B

11/20/85
date

Meeting Summary

The meeting was held to discuss the current completion status for construction, testing, and procedure development activities at Millstone Unit 3 in preparation for the upcoming Operating License issuance. The licensee presented information on project completion strategy and status. NRC Region I found the licensee's approach acceptable. Contact points were identified for resolution of associated inspection items.

DETAILS

1. Licensee Attendees

R. Bishop, Secretary and Counsel, Northeast Utilities
R. Busch, Project Manager, Millstone Unit 3
J. Crockett, Millstone Unit 3 Superintendent
J. Ferland, President, Northeast Utilities
J. Kelly, Station Superintendent, Services
R. Laudenat, Licensing Manager
E. Mroczka, Vice President, Nuclear Operations
S. Orefice, Millstone Unit 3 Construction Project Engineer
W. Romberg, Millstone Station Superintendent
R. Werner, Executive Vice President, Engineering and Operations

2. NRC Attendees

T. Murley, Administrator, Region I
R. Stasiostecki, Director, Division of Reactor Projects
S. Ebnetter, Director, Division of Reactor Safety
E. Wenzinger, Chief, Projects Branch 3
E. McCabe, Chief, Projects Section 3B
T. Rebelowski, Senior Resident Inspector
F. Casella, Resident Inspector
R. Summers, Project Engineer

3. Licensee Presentation and Discussion

The licensee made a presentation addressing the schedule for completing activities required prior to NRC's issuance of an Operating License for Millstone Unit 3. The licensee's presentation addressed the tracking of work on their computer-based Project Completion Punch-List, using the plant Technical Specifications to prioritize the work effort. It is the licensee's position that this approach assures that those activities required to support operating modes such as refueling (initial fuel load), plant heatup (post core hot functional test), and initial criticality, as defined by the Technical Specifications, would be completed in accordance with Technical Specifications requirements. The meeting agenda and a copy of the licensee's presentation materials are appended.

4. Meeting Results

NRC Region I agreed that the licensee's approach was acceptable. Contact points for processing of licensee work packages on open NRC items were identified. Provisions for working level discussions were made.

MILLSTONE 3 - NTOL MEETING

November 5, 1985

AGENDA

CONSTRUCTION

- Incomplete items description, safety significance, completion schedule*.
- Master Punch list size, safety significance, completion schedule*, closure rate.
- Construction personnel phase-out schedule (trades, S&W, NUSCO, others).
- CDRs, closure schedule, closure rate, carry-over beyond fuel load.

PREOPS

- Test status and completion schedule.
- Procedure review/approval status schedule.
- Test review status, schedule, progress rate.
- Test exception resolution and retest schedule.

STARTUP (includes tests through power ascension program)

- Procedure approval status and schedule.
- Results review and approval schedule.
- Retest planning.

FACILITY PROCEDURES (status & schedule)

- Surveillance procedures. (development and implementation)
- Maintenance procedures. (development and implementation)
- System operating procedures. (development and implementation)
- Abnormal condition procedures.

NRR OPEN ITEMS AND PLANNED RESOLUTION SCHEDULE

REGION I OPEN ITEMS AND PLANNED RESOLUTION SCHEDULE

* Include completion schedule in relation to fuel load, initial criticality, 5% power, 100% power, etc.

NRC REGION 1 MEETING AGENDA

- ° INTRODUCTION BOB BUSCH
- ° CONSTRUCTION COMPLETION JIM KELLEY
- ° PREOPERATIONAL TESTING JIM CROCKETT
- ° STARTUP TESTING JIM CROCKETT
- ° FACILITY PROCEDURES JIM CROCKETT
- ° NRC OPEN ITEMS JIM KELLEY

PROJECT COMPLETION STRATEGY

- ° COMPILE ALL OPEN ITEMS INTO ONE MASTER LIST - PROJECT COMPLETION PUNCH LIST.
- ° UTILIZE TECHNICAL SPECIFICATION OPERATIONAL MODES AS INITIAL CATEGORIZATION CRITERIA.
- ° UTILIZE TECHNICAL SPECIFICATION OPERABILITY AS ADDITIONAL CATEGORIZATION CRITERIA.
- ° FOR NON-TECHNICAL SPECIFICATION SYSTEMS UTILIZE TESTING MILESTONES AS THE CATEGORIZATION CRITERIA.
- ° FOR BUILDINGS UTILIZE AN AREA APPROACH AS THE CATEGORIZATION CRITERIA.
- ° FOR BUILDINGS USE OF FIRE WATCHES WILL BE LIMITED TO SPECIFIC AREAS.

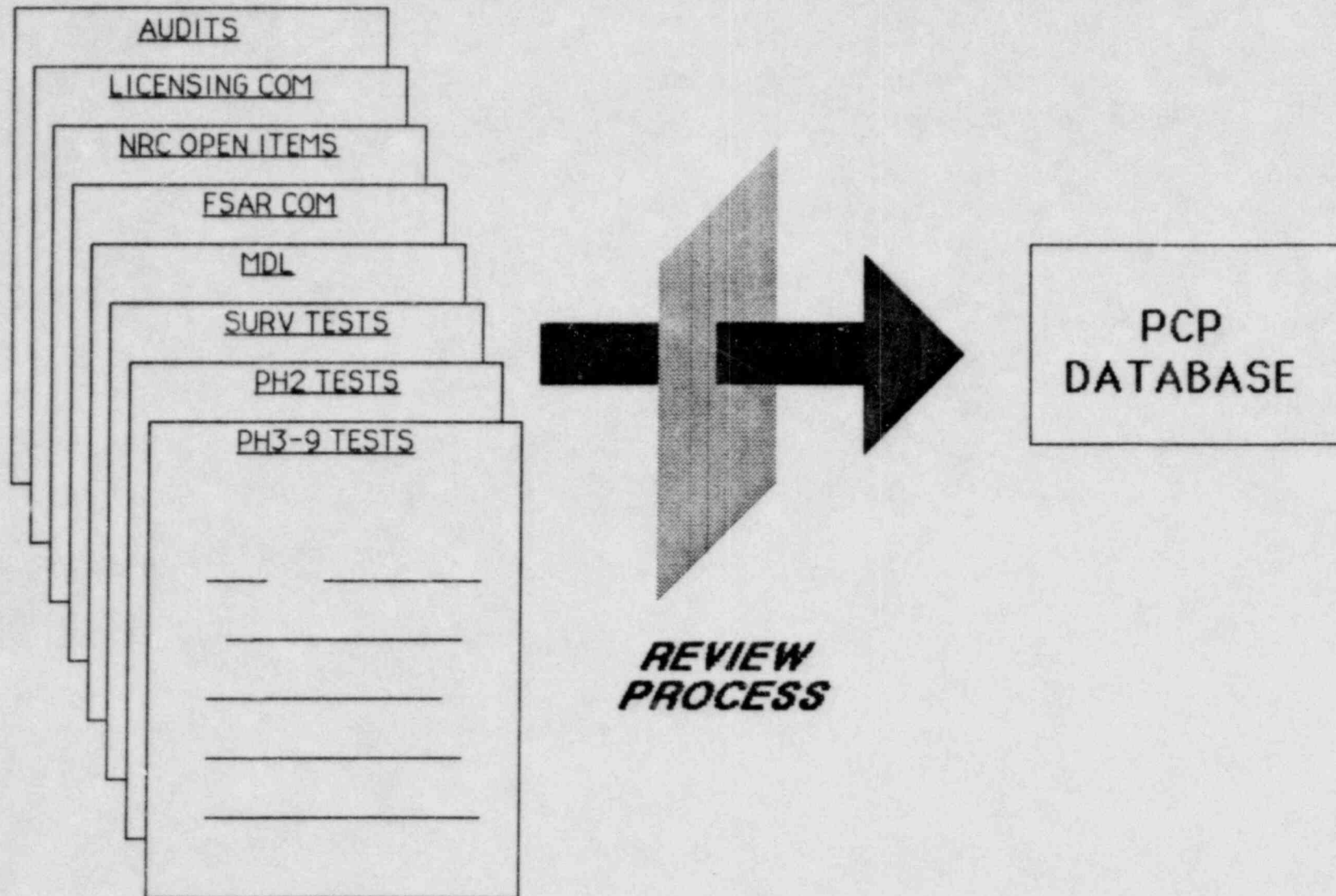
PCP

PROJECT COMPLETION
PUNCH-LIST

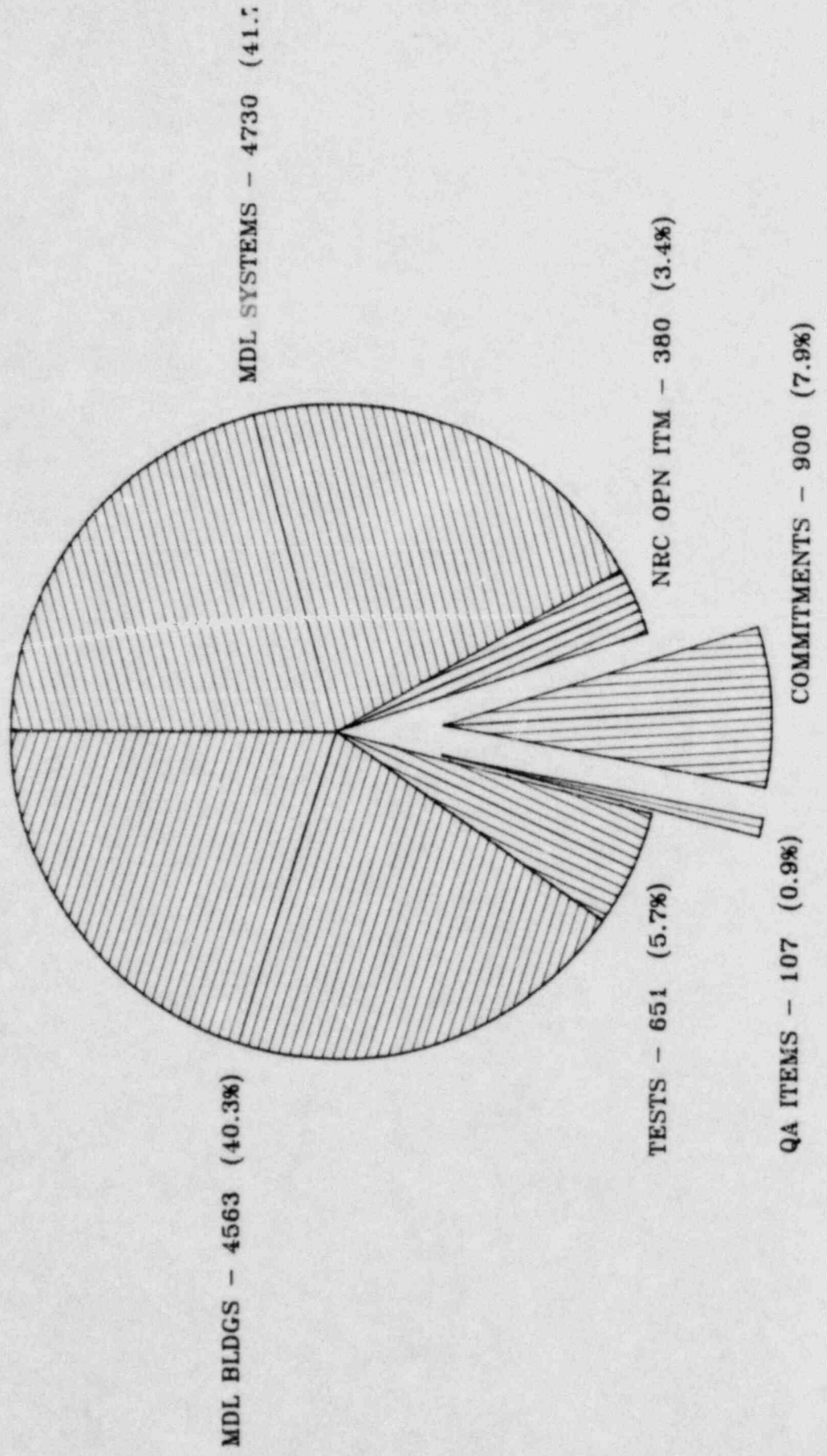
OVERVIEW AND STATUS

PCP

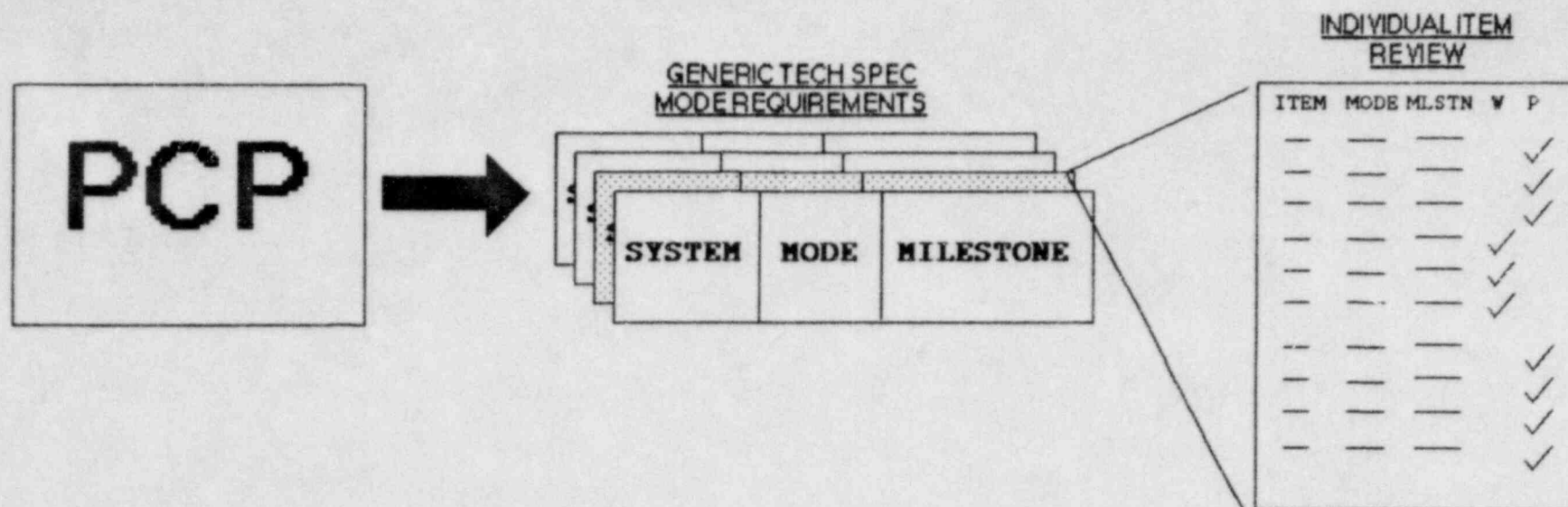
PROJECT COMPLETION PUNCH-LIST



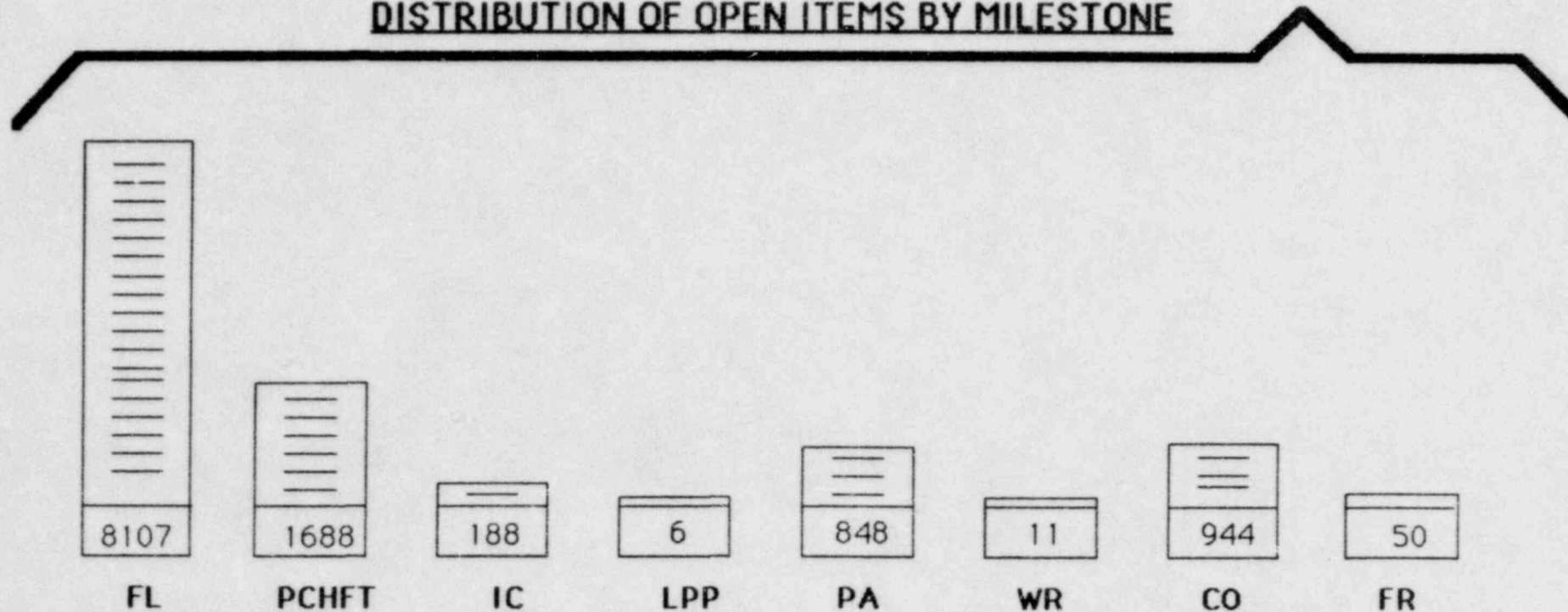
Open PCP Items by Document Category
(Total - 11331)



PCP REVIEW PROCESS



DISTRIBUTION OF OPEN ITEMS BY MILESTONE



FUEL LOAD

TOTAL	OPEN
3934	2431

MODE 6	
TOTAL	OPEN
816	614

NO MODE	
TOTAL	OPEN
3118	1817

WORK ITEM	349
--------------	-----

PAPER ITEM	265
---------------	-----

PROJECT COMPLETION PUNCHLIST

STATUS AS OF 11-3-85

BUILDING CATEGORIZATION CRITERIA

- ° BUILDING ITEMS WILL BE COMPLETED ON A PRIORITY BASES BY AREAS.
- ° COMPENSATORY MEASURES WILL BE UTILIZED IN AREAS WHERE CONSTRUCTION IS NOT COMPLETE.
- ° CONSTRUCTION ACTIVITIES WHICH REMAIN WILL NOT JEOPARDIZE OPERATING EQUIPMENT OR AREA BARRIERS.
- ° ALL AREAS ARE TARGETED FOR COMPLETION EXCEPT FOR THE CONTROL BUILDING BELOW THE CONTROL ROOM AND THE AUXILIARY BUILDING BELOW THE 66 FOOT ELEVATION.

CATEGORIES OF CLOSURE FOR
REGION 1 OPEN ITEMS

- ° SUBMITTED AS A COMPLETE PACKAGE TO THE RESIDENT INSPECTOR FOR REVIEW AND CLOSURE.
- ° ALL PHYSICAL WORK COMPLETED WITH A PACKAGE BEING PREPARED FOR SUBMITTAL TO THE RESIDENT INSPECTOR.
- ° PHYSICAL WORK TO BE PERFORMED AS TRACKED ON THE PCP FUEL LOAD COMPLETION LIST.

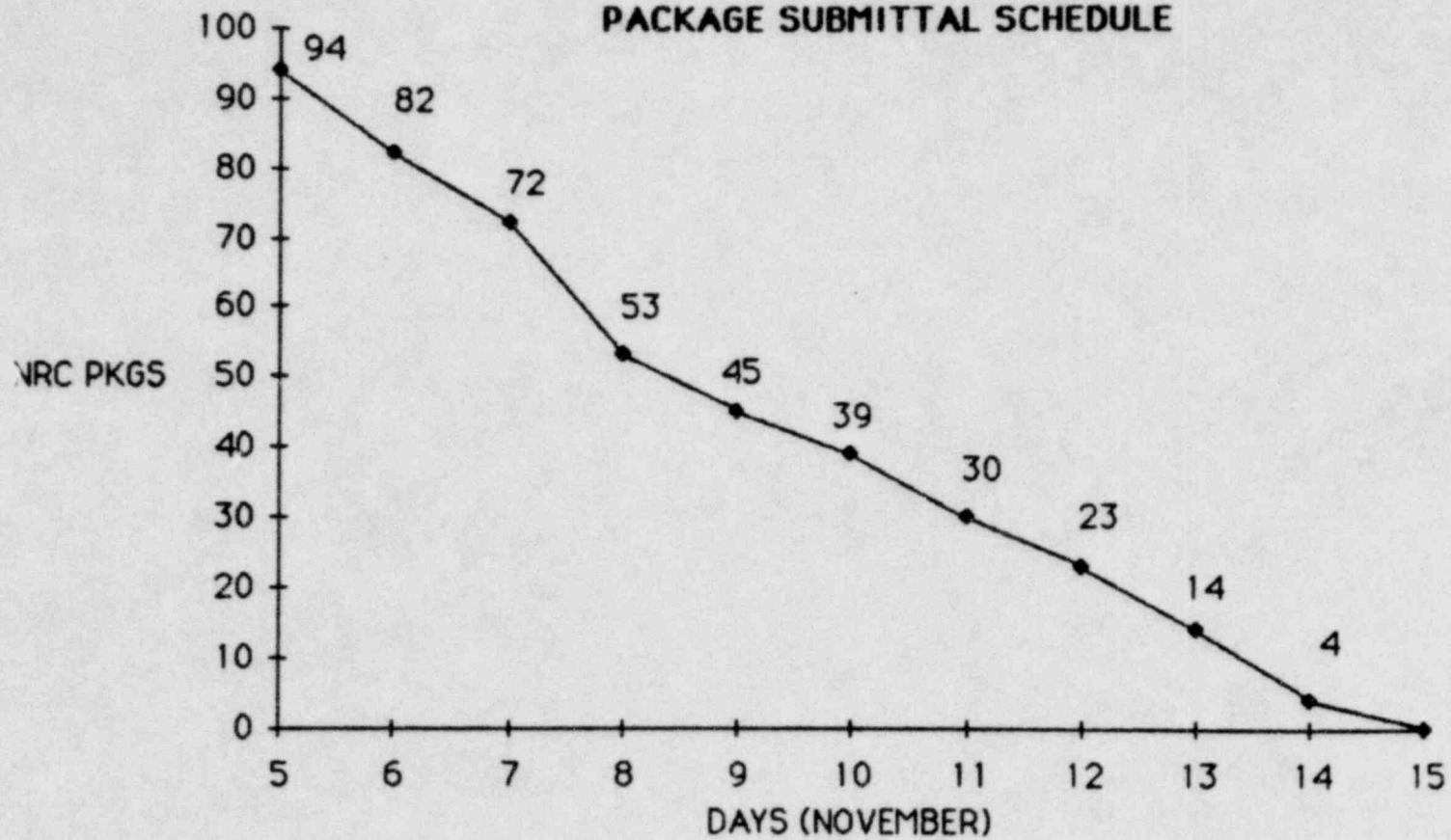
REGION 1 OPEN ITEMS

SUMMARY

11/1/85

ITEMS CLOSED		22
ITEMS SUBMITTED FOR CLOSURE		26
ITEMS BEING PREPARED FOR SUBMITTAL		
SER (85-SE)	11	
EMERGENCY PLAN (85-39)	6	
SAFE SHUTDOWN (85-53)	3	
TMI (85-TM)	5	
SECURITY	2	
REMAINDER	33	
		60
ITEMS REQUIRING PHYSICAL WORK		31
ITEMS TO BE OPEN AT FUEL LOAD		3
TOTAL ITEMS		142

**REGION I OPEN ITEMS
PACKAGE SUBMITTAL SCHEDULE**



NRR OPEN ITEMS

11/1/85

TOTAL NRR OPEN ITEMS ENTERED IN PCP 128*

ITEMS REQUIRED FOR MODE 6 73

OPEN ITEMS

TECH SPECS 11

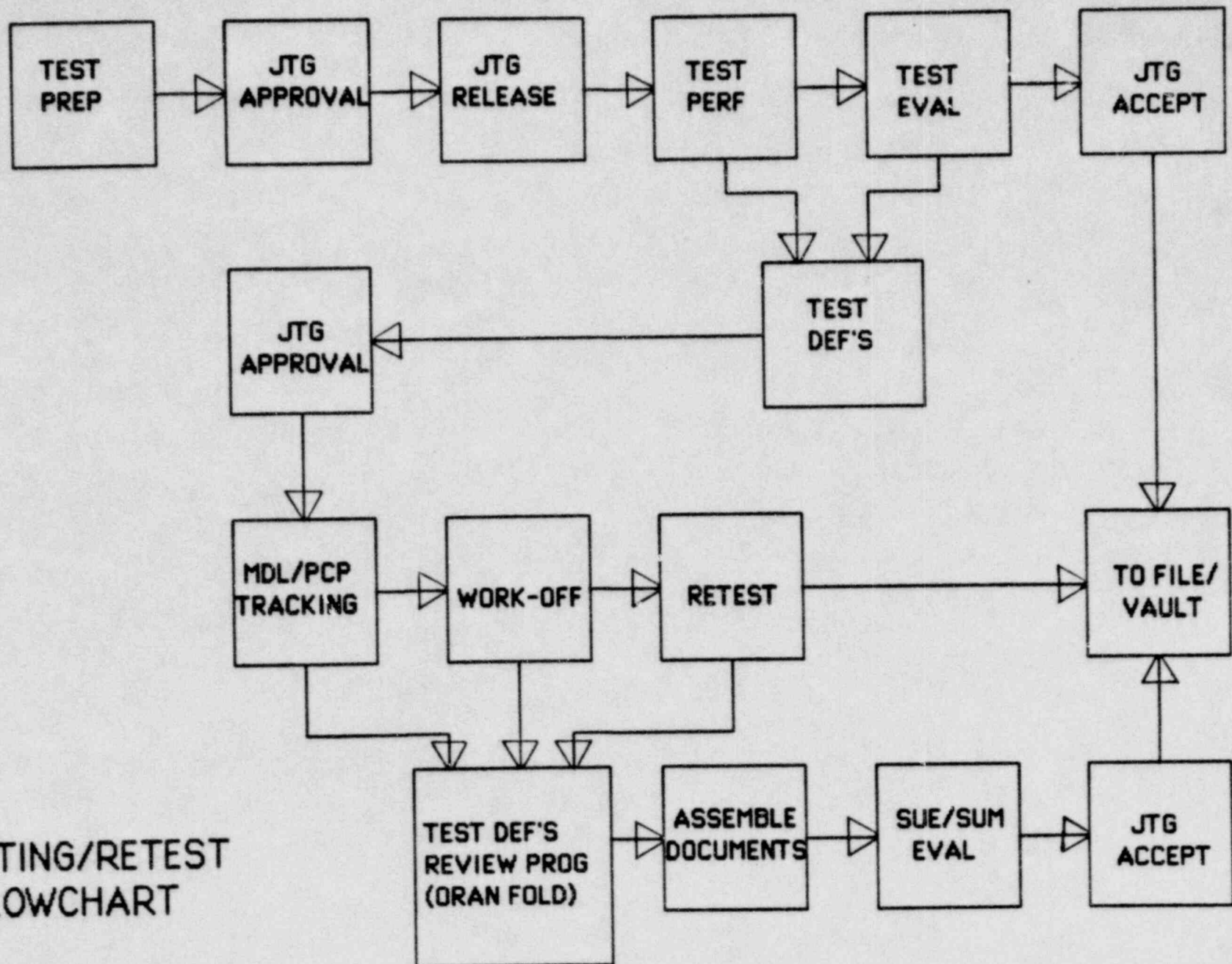
CONFIRMATORY ITEMS 14**

25

CLOSED ITEMS 48

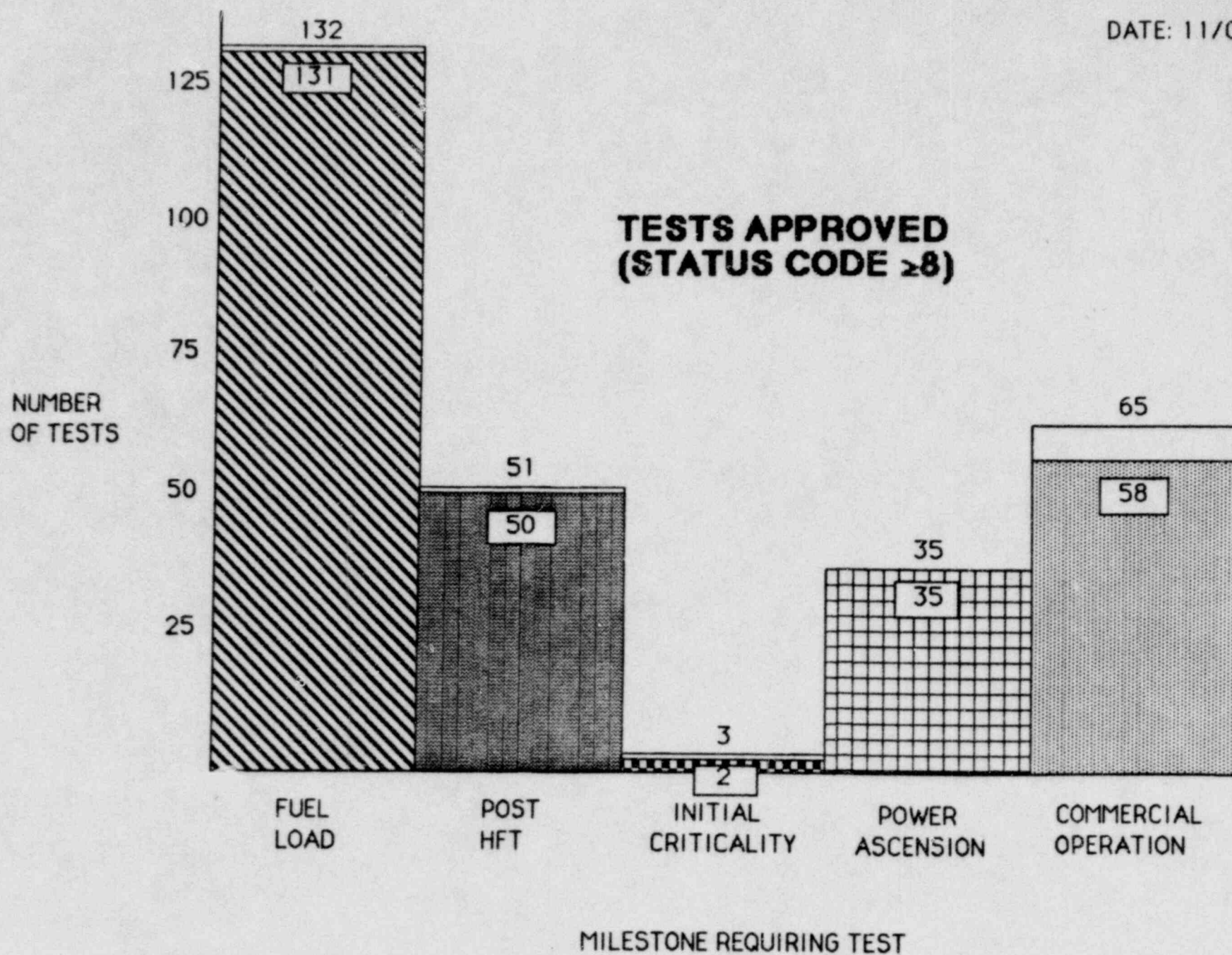
*REFLECTS ALL REMAINING ITEMS WITH NRR

**APPROXIMATELY 1/2 ARE LICENSE CONDITIONS WHICH WE ACCEPT WHILE
THE OTHER HALF ARE NEW QUESTIONS BEING RESOLVED

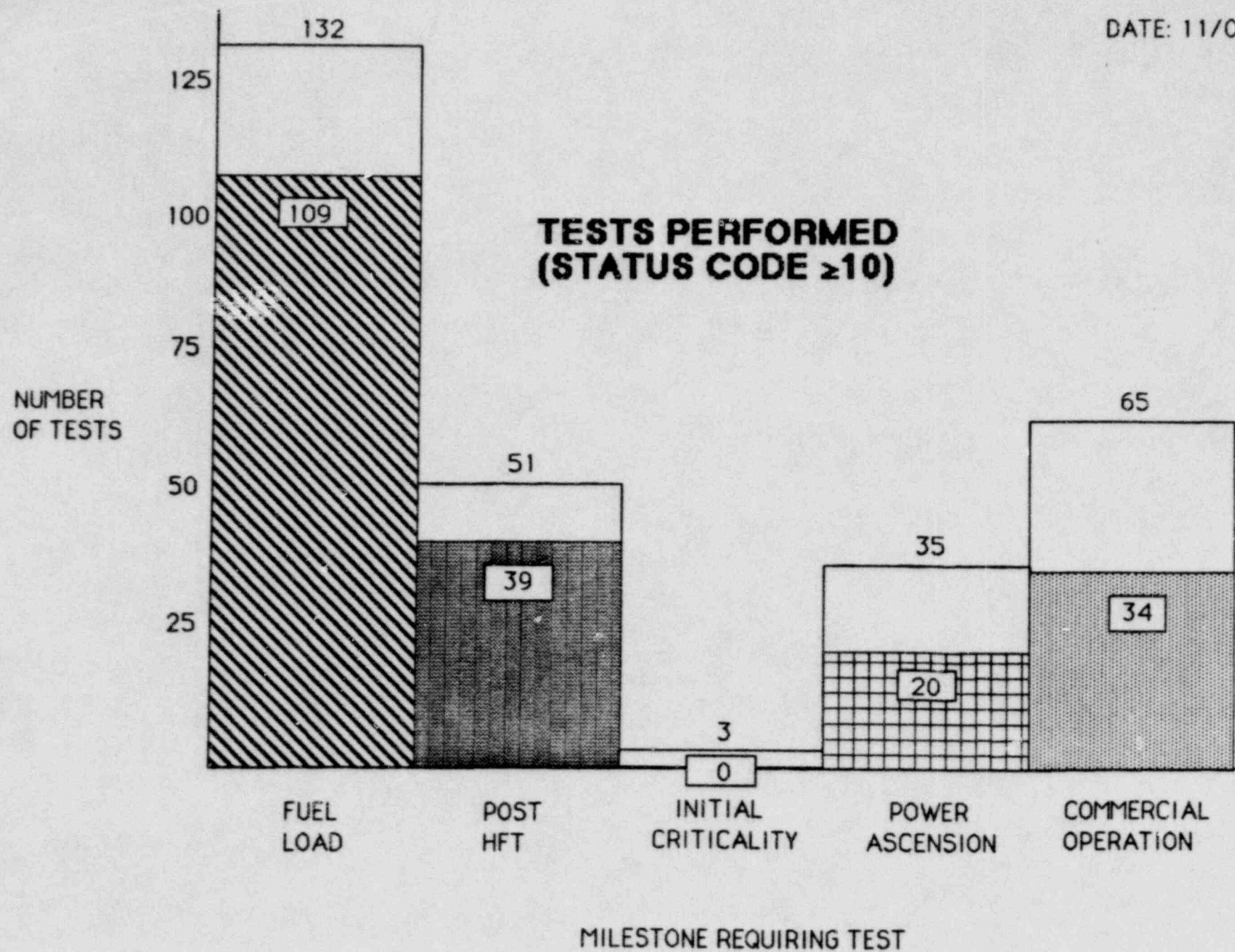


TESTING/RETEST
FLOWCHART

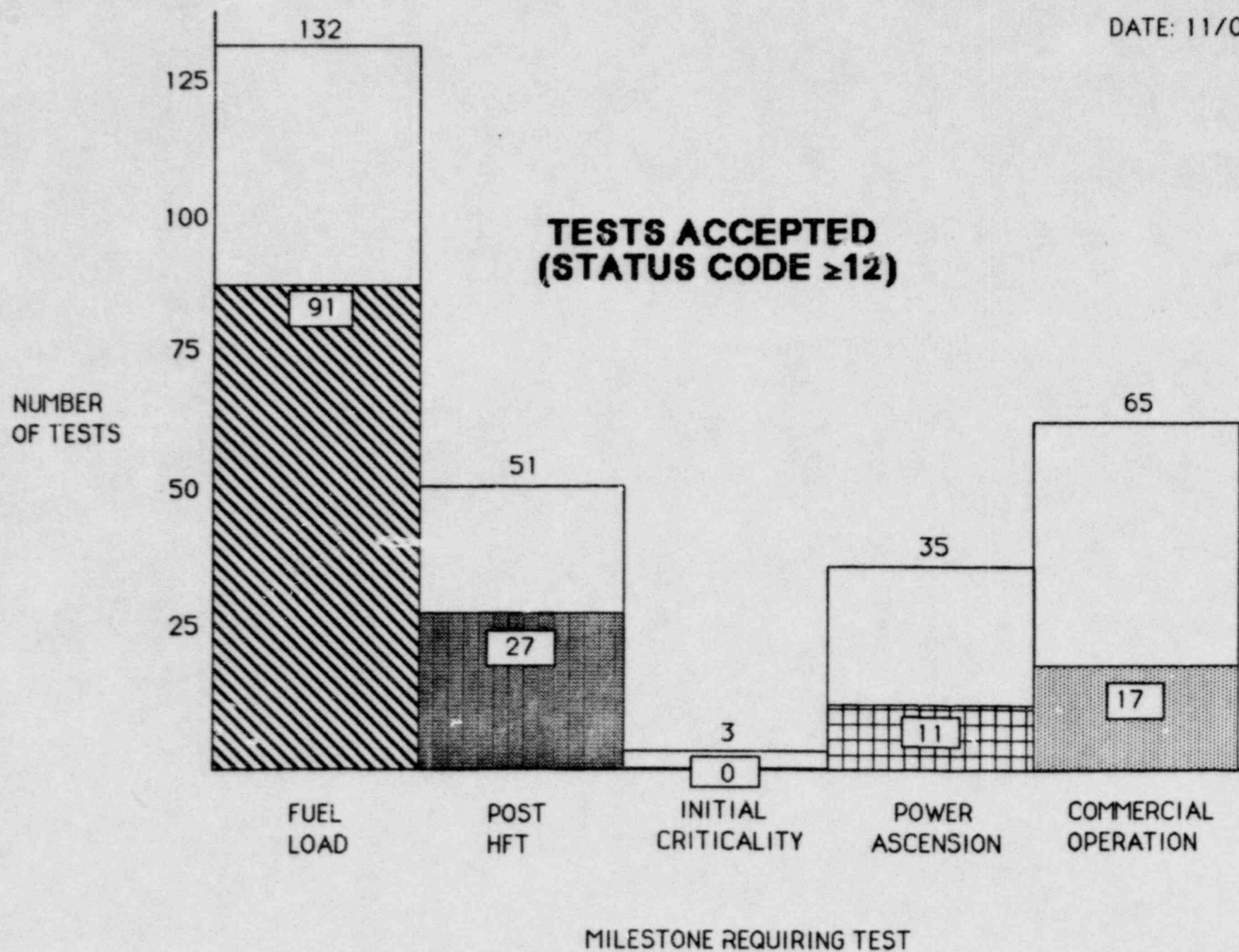
DATE: 11/04/85



DATE: 11/04/85



DATE: 11/04/85



STARTUP TEST PROCEDURE PREPARATION STATUS REPORT

DATE: 11/04/85

TEST TYPE BY PHASE

PROCEDURE STATUS CODE

0 - NOT
WRITTEN

1 - ROUGH
DRAFT

2 - DRAFT
TYPED

3 - FIRST
REVIEW

4 - SECOND
REVIEW

5 - FINAL
TYPING

7 - PORC
APPROVED

8 - APPROVED
COPY FILED

TOTAL NUMBER
IN CATEGORY

PORC APPROVAL
TARGET DATE

4 FUEL LOAD	5 POST CORE HFT	6 INITIAL CRIT	7 LPPT	8 POWER ASCENSION	9 WARRANTY RUN
	1	1		7	
	1			1	
					1
				3	1
	50 ⁴ 4			5	
2	5 6			14	1
3	1	2	6		
1	1			4	
6	14	3	6	34	3
11/12/85	11/15/85	11/29/85	11/29/85	11/29/85	12/06/85

SURVEILLANCE STATUS

	<u>TOTAL</u>	<u>PORC APPROVED</u>	<u>AGENDA</u>	<u>REMAINING TOTAL (MODE 6)</u>
<u>OPS</u>	168	82	34	52 (9)
<u>ENGR.</u>	9	2	2	5 (0)
<u>MAINT.</u>	18	12	3	1 (0)
<u>I&C</u>	98	56	30	12 (2)
<u>CHEM.</u>	23	0	13	10 (0)
<u>HP</u>	1	1	0	0

PROCEDURE STATUS

	<u>TOTAL</u>	<u>PORC APPROVED</u>	<u>AGENDA</u>	<u>REMAINING</u>
<u>3200</u> (GOP)	28	24	3	1
<u>3300</u> (SYST)	123	119	4	0
<u>3400</u> (I&C)	675	130	150	395
<u>3500</u> (EOP)	55	55	0	0
(AQP)	22	11	7	4
<u>3700</u>	119	90	10	19