

Seatt
CORPORATION

2820 Thatcher Road
Downers Grove, Illinois
U.S.A. 60515-4040
PHONE 708-963-1580
FAX 708-960-9302

September 26, 1994

Division of Industrial and Medical Nuclear Safety
Office of Nuclear Materials Safety and Safeguards
U.S. Nuclear Regulatory Commission
Washington, DC 20555-0001

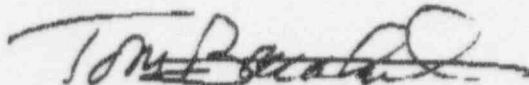
SUBJECT: License No. 12-15537-2E

Dear Sir/Madam:

Enclosed is our application for license renewal and a renewal fee in the amount of \$2300.00. Also enclosed is a complete product transfer/distribution report covering the period of September 1, 1989 through August 31, 1994.

Please do not hesitate to contact me if you need any additional information.

Sincerely,



Tom Barakat
Radiation Safety Officer

cc: U.S. N.R.C. Region III
Glen Ellyn, IL

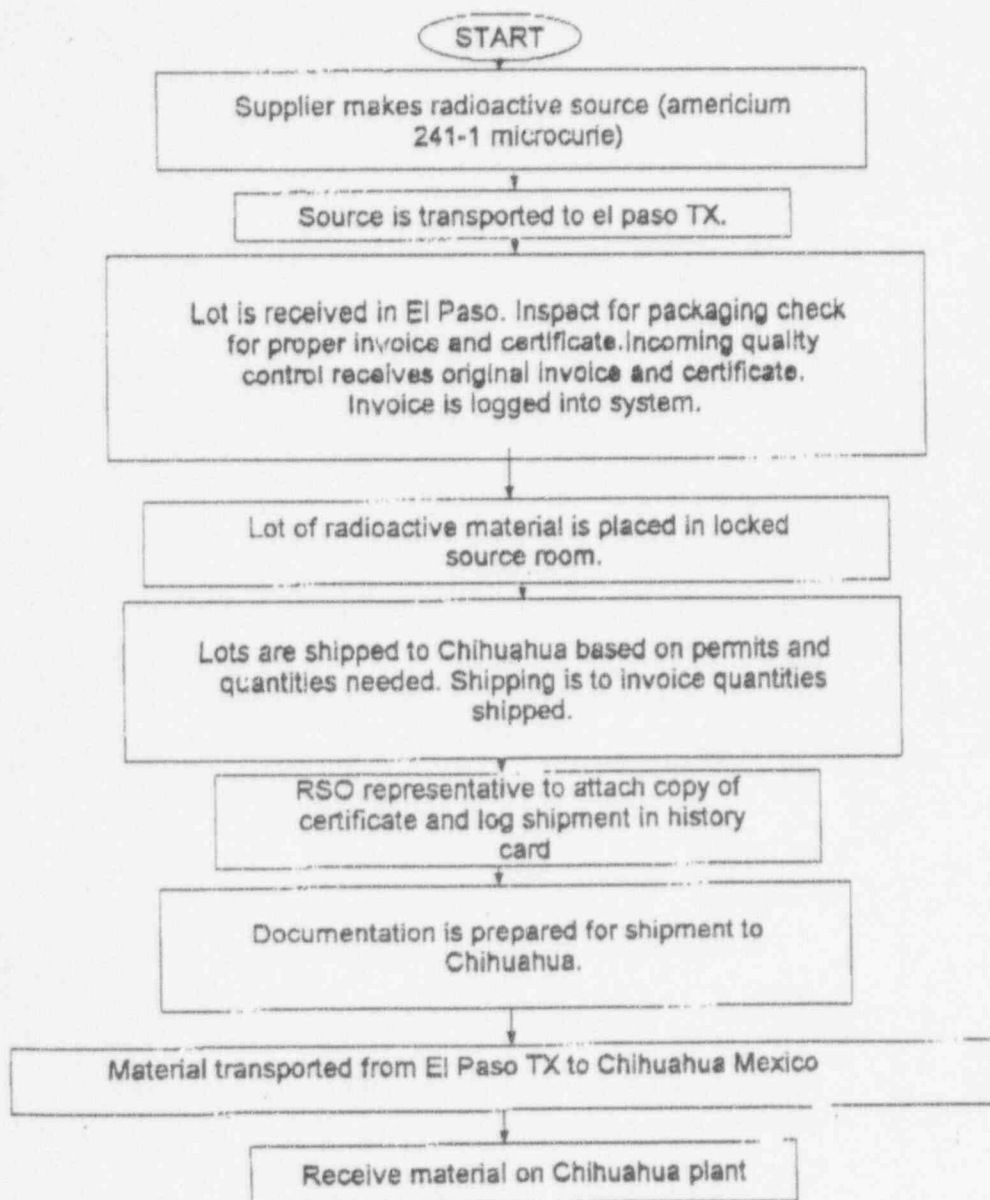
TB mic

9701140163 961230
PDR RC * PDR
SSD

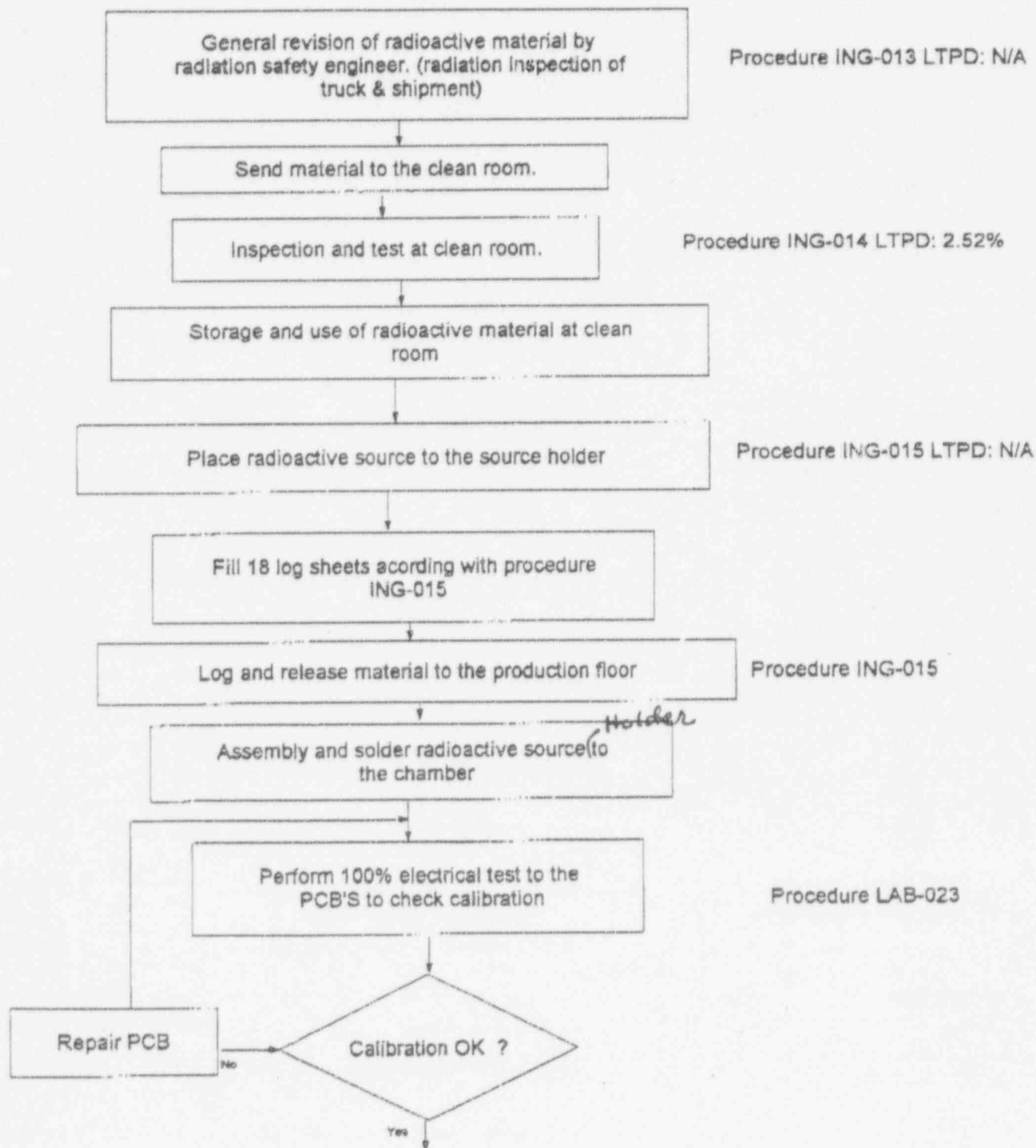
Seatt Corporation

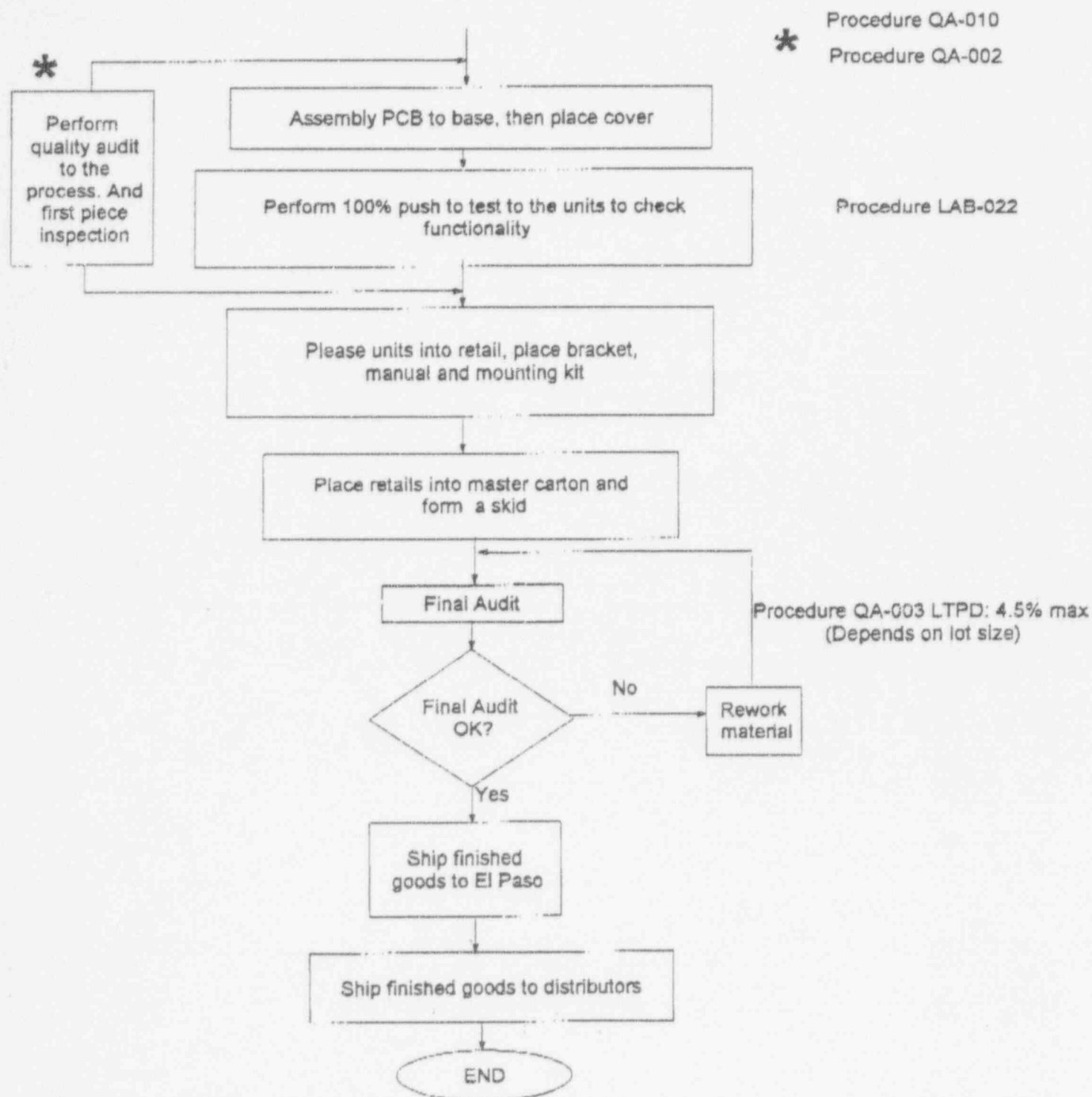
Radioactive Material - Americium 241

FLOW CHART

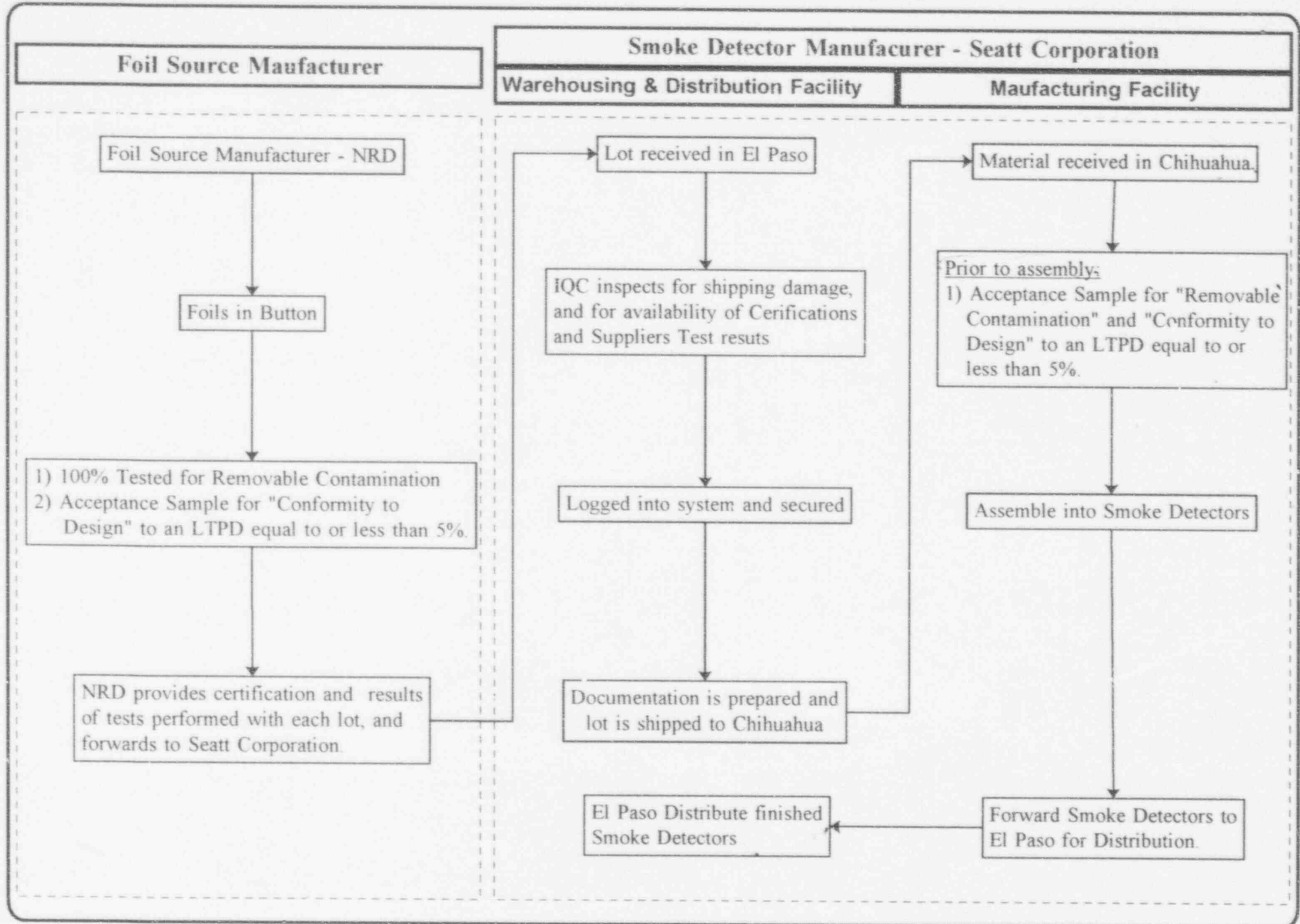


Procedure ING-012





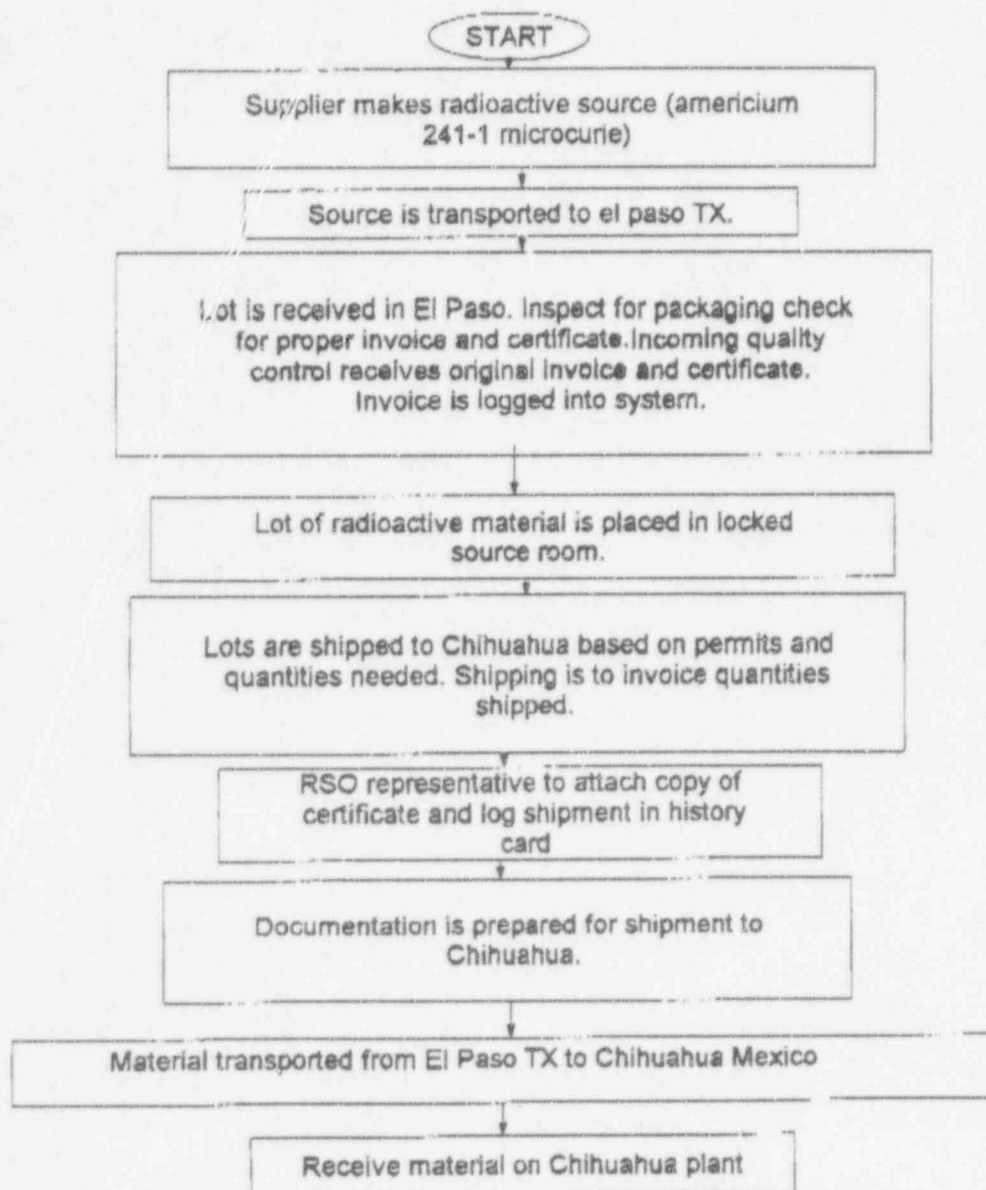
Seatt Corporation - Americium 241 Deployment Chart



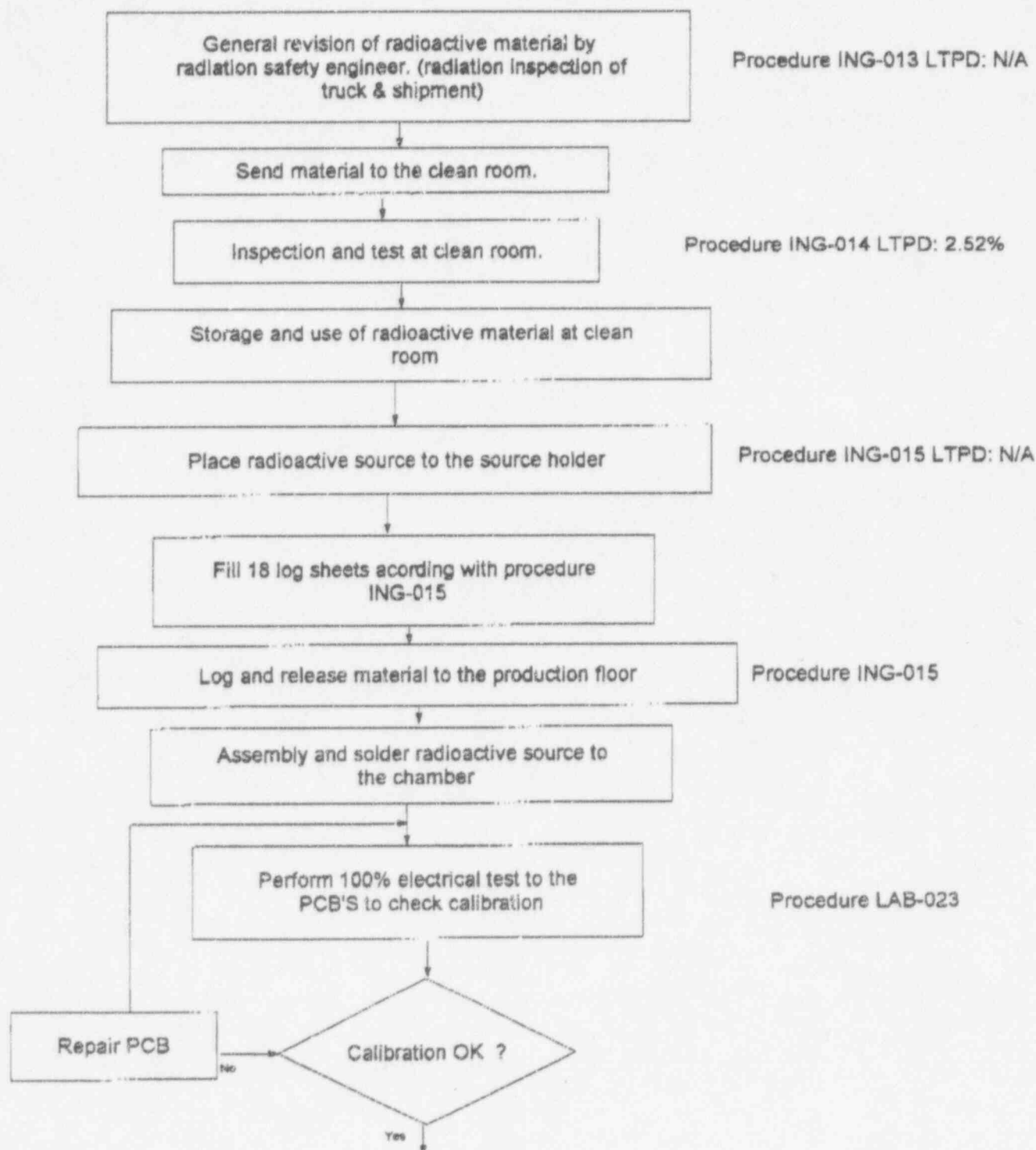
Seatt Corporation

Radioactive Material - Americium 241

FLOW CHART



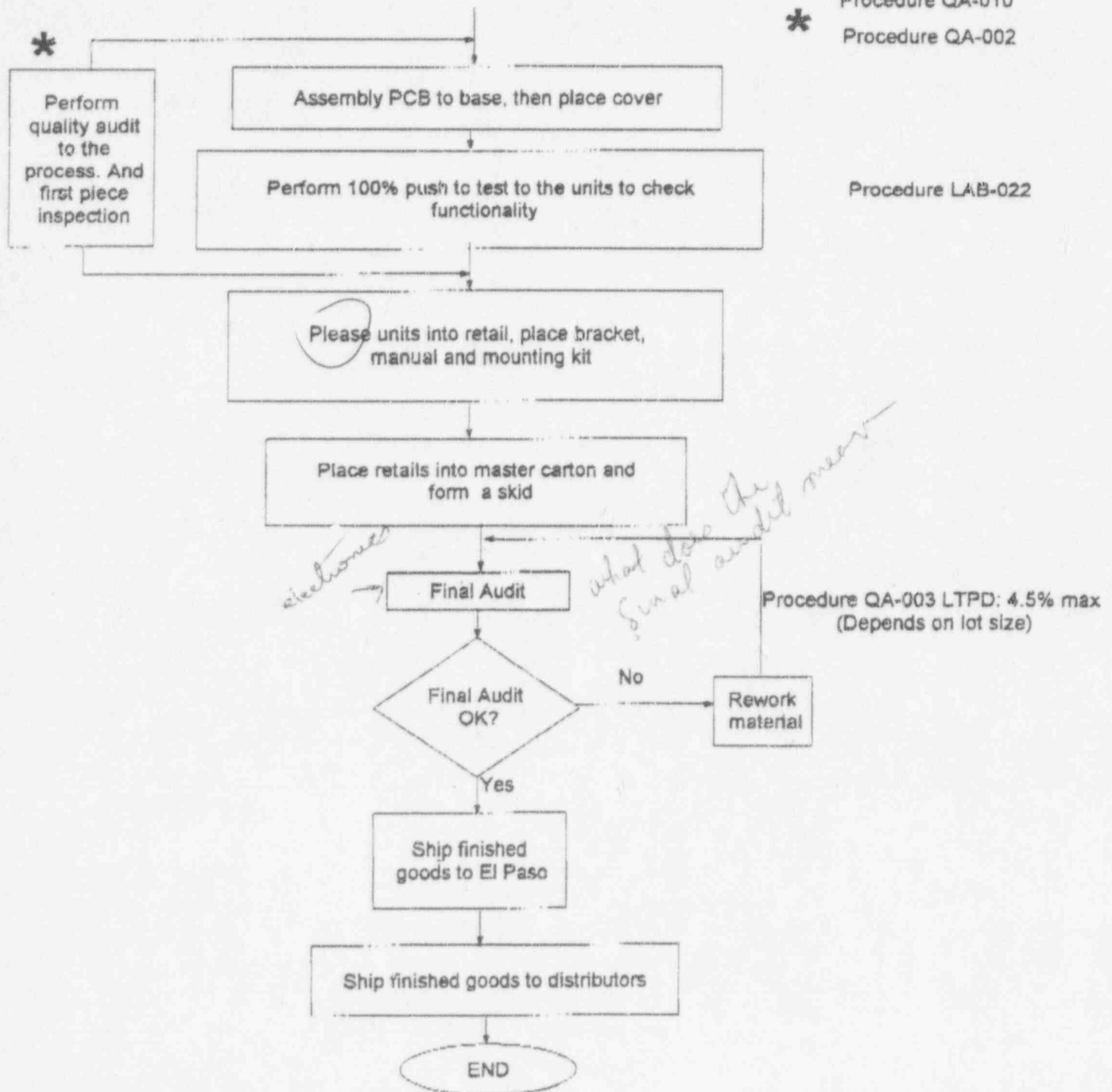
Procedure ING-012



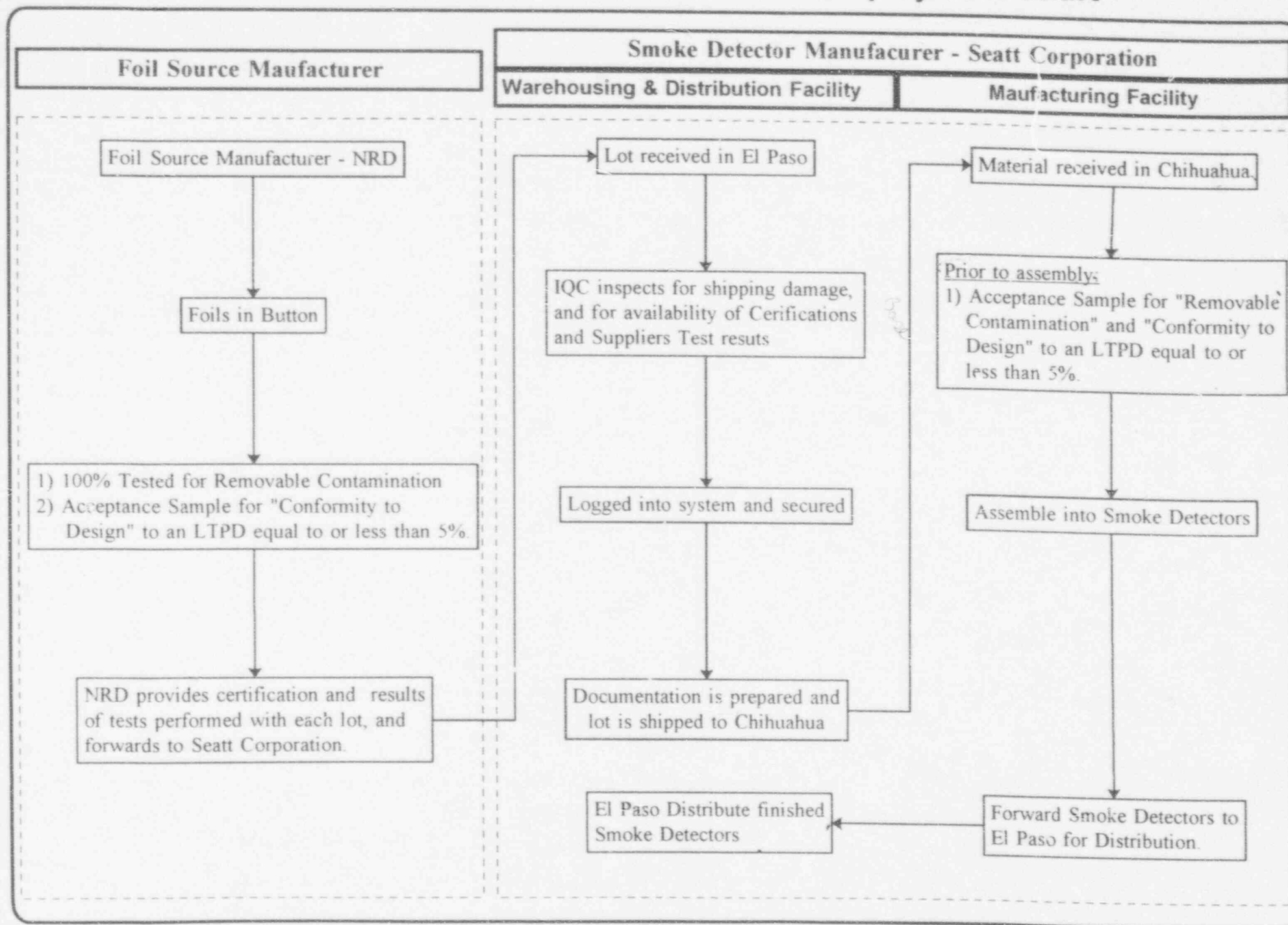
Procedure QA-010

Procedure QA-002

Procedure LAB-022



Seatt Corporation - Americium 241 Deployment Chart



RADIATION: EL PASO WAREHOUSE

1.0 PURPOSE

To provide handling work instructions to all personnel whom will need to deal with radioactive shipments.

2.0 APPLICATION

For use by anyone handling shipment of radioactive material.

3.0 RECEIVING INSTRUCTIONS

- 3.1 When lots are received need to check for any type of damage that might have occurred to the product during shipment. Boxes should be closed and should show no physical damage done to the boxes nor should the security seal show signs of tampering. If the boxes have considerable amount of damage the shipment should be refused. (Need to keep in mind that the material is packaged in tin containers and there is large amounts of padding in the box to protect it against handling and water damage.) Before returning need to consult R.S.O. representative.
- 3.2 Paperwork should be included with every shipment. Paperwork is to consist of supplier invoice and a certificate for sealed radioactive sources. Boxes are not to be opened to verify counts. Lot should be moved to the radioactive source room. Room is to be kept locked at all times and only during a transaction should anyone be near the area. General rule: radiation sources to always be as far away as possible from any work area and handling should be as minimal as possible.
- 3.3 The original packing slip should be given to the R.S.O. representative for proper filing. The copy will follow the normal receiving procedure which is to include the shipping log.

4.0 SHIPPING INSTRUCTIONS

- 4.1 Sources are shipped in accordance to permit balance and Chih in house balance. Chih, R.S.O. representative will inform shipping of needed quantities via telecon. This will allow shipping to began preparing necessary transaction for shipment of radioactive sources and to notify R.S.O. of outgoing shipment.
- 4.2 Shipping must notify the carrier of shipment of radioactive sources. Special permits must be obtained and only Bonded trailers (special trailer) are to be used.
- 4.3 After shipment is physically ready for shipment readings are taken with a Geiger counter from a distance of 3' (feet). This is performed by the R.S.O. representative. The shipping department will attach a copy of the invoice to the pallet(s). The R.S.O is to attach a copy of the supplier invoice and certificate to the pallet.
- 4.4 A copy of the packing slip is given to the R.S.O. representative to log into file.

5.0 TRANSPORTATION

- 5.1 Upon leaving the warehouse the driver must be furnished with the following documents:
 - 5.1.1 Bill of lading
 - 5.1.2 DOT routing (HC)
 - 5.1.3 Emergency Response Guide
 - 5.1.4 Must be knowledgeable of Hazardous Waste # 126 & #127

5.1.5 Must speak and write English

5.2 The trailer should be identified with the corresponding labels indicating transportation of radioactive material. R.S.O. representative from Chih. will then accompany the shipment to the Chihuahua facility.

6.0 STORAGE:

6.1 Lots to remain in source room until requested from Chihuahua is made.

6.2 No one is authorized to open sealed cardboard boxes. Only R.S.O. personnel or representative can open these boxes if requested by Cooperate R.S.O.

7.0 PERIODIC CHECKS:

7.1 Quarterly wipe tests are performed. Tin containers are damped and rubbed against the area that made contact with the radioactive sources. The cans are identified, documented and sent along with the information to Downers Grove. Lab results will indicate levels of radiation in source room, safe, and working area (if applicable).

8.0 SOURCE STORAGE

8.1 All lots rec'd need to be moved into the storage room unless shipment will be leaving same day. El Paso distribution warehouse is not authorized to open tin containers. (El Paso is a "holding area" until Chihuahua requests shipment.)

8.2 Safe.- (Found in storage room.) Utilized for storage of small quantities of radioactive material, usually form units destroyed and sources have been removed. No smoke alarms are to be thrown away until radioactive source has been removed. All sources are stored in safe until shipment is ready for disposal.

9.0 Disposal:

A) Chih and El Paso accumulate small quantities of radiation that cannot be utilized. These quantities are returned back to supplier for disposal. Control and handling is very important and should be done with supervision of R.S.O. authorized personnel.

WIPE TEST INFORMATION

