

Alpworth
6-24-85

PHILADELPHIA ELECTRIC COMPANY
PEACH BOTTOM UNITS 2 AND 3
EMERGENCY PLAN IMPLEMENTING PROCEDURE

EP-101 CLASSIFICATION OF EMERGENCIES

PURPOSE:

To define the method of classification of an event or condition into one of four emergency classifications as described in the Emergency Plan. Additionally this procedure details the method of de-escalation from one emergency action level to another.

REFERENCES:

1. Peach Bottom Atomic Power Station Emergency Plan
2. NUREG 0654 Criteria for Preparation and Evaluation of Radiological Emergency Response Plans and Preparedness in Support of Nuclear Power Plants.
3. EP-102, Unusual Event Immediate Actions
4. EP-103, Alert Immediate Actions
5. EP-104, Site Emergency Immediate Actions
6. EP-105, General Emergency Immediate Actions

ACTION LEVEL:

Implemented this procedure whenever Shift Supervision detects conditions which meet the Emergency Action Levels in Appendix EP 101, Classification Table.

IMPLEMENTATION OF THIS PROCEDURE DOES NOT CONSTITUTE
IMPLEMENTATION OF THE EMERGENCY PLAN.

PRECAUTIONS:

THE JUDGEMENT OF THE EMERGENCY DIRECTOR IS VITAL IN PROPER CONTROL OF AN EMERGENCY AND TAKES PRECEDENCE OVER GUIDANCE IN THE EMERGENCY PLAN PROCEDURE.

IMMEDIATE ACTIONS:

1.0 Shift Supervision or Emergency Director shall:

- 1.1 Select affected categories related to station events or conditions.

8508070392 850715
PDR ADDCK 05000277
F PDR

CONTROLLED COPY VALID
ONLY WHEN RED

IMMEDIATE ACTIONS (cont'd)

<u>Category</u>	<u>Reference Pages in Appendix EP-101</u>
Unplanned Shutdown	1
Personnel Injury	2
Primary Containment Integrity	3
Radioactive Material Release	4
Fire	5
Environmental	6
Loss of Power	7
Secondary Containment	8
Instrument Failure	9
Fuel Damage	10
Hazards to Station Operation	11
Control Room Evacuation	12
Security	See Contingency Plan

- 1.2 Beginning at the indicated page in Appendix EP 101, review the Emergency Action Levels for all categories selected.
- 1.3 If the most severe events or conditions are classified as an Unusual Event, implement EP 102, "Unusual Event Response."
- 1.4 If the most severe events or conditions are classified as an Alert, implement EP 103, "Alert Immediate Response."
- 1.5 If the most severe events or conditions are classified as a Site Emergency, implement EP 104, "Site Emergency Response."
- 1.6 If the most severe events or conditions are classified as a General Emergency, implement EP 105, "General Emergency Response."

FOLLOW-UP ACTIONS

- 1.0 If event is classified as Alert, Site Emergency, or General Emergency, Shift Supervision or Emergency Director shall:
 - 1.1 Periodically evaluate the event classification as listed on attached Appendix EP-101. Based upon results of corrective action taken to recover from the emergency situation, escalation or de-escalation of the emergency action level classification will be decided upon by the Emergency Director or Interim Emergency Director. (It is preferable, but not mandatory, to obtain concurrence from the Site Emergency Coordinator and Corporate Headquarters prior to classification reduction). The NRC and appropriate off-site authorities at the Emergency Operations Facility all be informed of the decision to move from one emergency class to the next. All agencies or personnel listed in checkoff lists of EP's 102, 103, 104, and 105 shall be informed as a minimum.
 - 1.2 Provide written summary within eight hours to the NRC concerning basis and circumstances surrounding reduction of emergency action level or closeout of the emergency.
- 2.0 If event is classified as an Unusual Event, Shift Supervision or Emergency Director shall periodically evaluate the event classification as listed on attached Appendix EP-101 and escalate or de-escalate the emergency action level if necessary. All appropriate agencies or personnel shall be notified using the appropriate check-off lists of EP-102, 103, 104, 105.
- 3.0 When the emergency has been mitigated and the power plant and auxiliaries have been placed in a safe shutdown condition, only then will a decision be made as to whether a recovery phase is justified. To enter the recovery phase after the emergency or accident situation is considered no longer in effect, the concurrence of the Site Emergency Coordinator, Emergency Director, the Emergency Control Officer at Corporate Headquarters, and Federal and State Government Liaison is required. The recovery phase is a departure from an emergency situation. The Site Emergency Coordinator and Emergency Director evaluates plant operating conditions as well as the in-plant and out-of-plant radiological conditions in this decision. Notifications to the various individuals and agencies that the recovery phase has been implemented is the responsibility of the Site Emergency Coordinator.

UNPLANNED SHUTDOWN

UNUSUAL EVENT	ALERT
<p><u>UNPLANNED SHUTDOWN</u></p> <ol style="list-style-type: none"> 1) controlled shutdown due to failure to meet L.C.O. 2) any scram other than planned 	<p><u>SCRAM WITH TRIPLE LO LEVEL</u></p> <ol style="list-style-type: none"> 1) scram alarm <u>and</u> 2) double low level alarm (-48") <u>and</u> 3) triple low level alarm (-130") <u>and</u> 4) increase in containment pressure to greater than 1 psig but less than 2 psig on PR-2/3508 <p><u>SCRAM WITH SMALL LEAK</u></p> <ol style="list-style-type: none"> 1) scram alarm <u>and</u> 2) double low level alarm (-48") <u>and</u> 3) triple low level alarm (-130") <u>and</u> 4) containment high pressure alarm (2 psig) <u>and</u> 5) containment pressure 2 psig or greater on PR 2/3508
SITE EMERGENCY	GENERAL EMERGENCY
<p><u>SCRAM WITH LOCA</u></p> <ol style="list-style-type: none"> 1) scram alarm <u>and</u> 2) double low level alarm (-48") <u>and</u> 3) triple low level alarm (-130") <u>and</u> 4) containment high pressure alarm (2 psig) <u>and</u> 5a) containment pressure 10 psig or greater on PR 2/3508 <u>or</u> 6b) containment dose rate greater than 10^5 R/hr on RI-8/9103A/C and RI-8/9103B/D 	<p><u>SCRAM WITH LOCA & NO ECCS</u></p> <ol style="list-style-type: none"> 1) scram alarm <u>and</u> 2) double low level alarm (-48") <u>and</u> 3) triple low level alarm (-130") <u>and</u> 4) active fuel range level indication shows less than -226" on LI-2/3-2-3-91A, B <u>and</u> 5) failure to reset triple low level alarm after 3 minutes <u>and</u> 6) containment high pressure alarm (2psig) <u>and</u> 7) containment pressure greater than 20 psig on PR-2/3508 <u>or</u> 8) containment dose rate greater than 10^6 R/hr on RI-8/9103A/C and RI-8/9103 B/D

CONTROLLED COPY VALID
ONLY WHEN RED

PERSONNEL INJURY

UNUSUAL EVENT	ALERT
<p><u>INJURY WITH EXCESS RADIATION EXPOSURE OR CONTAMINATION</u></p> <ol style="list-style-type: none"> 1) Contaminated injury warranting off-site medical treatment <u>or</u> 2) an acute whole body exposure greater than 3 R 	<p>N/A</p>
SITE EMERGENCY	GENERAL EMERGENCY
<p>N/A</p>	<p>N/A</p>

PRIMARY CONTAINMENT

UNUSUAL EVENT	ALERT
<p><u>NON-ISOLABLE LEAKAGE :</u></p> <ol style="list-style-type: none"> 1) Primary containment leakrate is greater than 0.5 percent of volume per 24 hrs. at 49.1 psig <u>or</u> 2) N₂ makeup system is not capable of maintaining pressure (not due to lack of N₂). <p><u>FAILURE TO ISOLATE PENETRATION WHEN ISOLATED BY A TRANSIENT</u></p> <ol style="list-style-type: none"> 1) incorrect valve position during Group I, II, or III isolation alarms 	<p><u>LOSS OF PRIMARY CONTAINMENT INTEGRITY</u></p> <ol style="list-style-type: none"> 1) Reactor Building vent rad effluent high rad alarm and inability to maintain pressure greater than 0.25 psig on narrow range PR-2/3508 <u>or</u> 2) Torus Room flood alarm with level decrease in torus
SITE EMERGENCY	GENERAL EMERGENCY
<p><u>LOSS OF PRIMARY CONTAINMENT INTEGRITY WITH LOCA</u></p> <ol style="list-style-type: none"> 1) erratic containment pressure fluctuations above alarm setpoints of 1.5 psig, <u>and</u> 2) Group II and III isolation alarms, <u>and</u> 3) Containment dose rate greater than 10⁵ R/hr on RI-8/9103A/C and RI-8/9103B/D <u>and</u> 4) Reactor Building area high temperature alarm, <u>or</u> Area Radiation Monitors on PR 2/3-18-55 abnormally high, <u>and</u> Reactor Bldg. vent rad effluent high alarm, <u>or</u> Main Stack Rad effluent on PR 0-17-051 increasing due to SGTS operation. 	<p>N/A</p> <p><u>SITE EMERGENCY continued</u></p> <p><u>POTENTIAL LOSS OF PRIMARY CONTAINMENT HIGH RADIATION</u></p> <ol style="list-style-type: none"> 1) containment high pressure alarm, (2.0 psig), <u>and</u> 2) scram, <u>and</u> 3) containment dose rate greater than 10⁵ R/hr on RI-8/9103A/C and RI-8/9103B/D, <u>and</u> 4) Reactor Bldg Area Rad Monitors Alarming, <u>and</u> 5) Vent Stack Rad Effluent monitor high alarm

RADIOACTIVE RELEASE

UNUSUAL EVENT	ALERT
<p style="text-align: center;"><u>INSTANTANEOUS RELEASE EXCEEDING TECH SPECS</u></p> <ol style="list-style-type: none"> 1) Liquid effluent release exceeding Tech. Spec. 3.8.B.1 2) Gaseous effluent release exceeding Tech. Spec 3.8.C.1 which may be detected by the following: <ol style="list-style-type: none"> a. If all releases are from one release point <ol style="list-style-type: none"> 1. A spike on the main stack greater than 1.8×10^4 cps on RR-0-17-051 <u>or</u> 2. A spike on the reactor bldg. vent greater than 3×10^5 cpm on RR-2/3979 <u>or</u> b. If the release is from more than one release point <ol style="list-style-type: none"> 1. A spike on the main stack greater than 6×10^3 cps on RR-0-17-051 <u>or</u> 2. A spike on the reactor bldg. vent greater than 1×10^5 cpm on RR-2/3979 <u>or</u> 	<p style="text-align: center;"><u>ACTUAL OR POTENTIAL RELEASE 0.01 REM WHOLE BODY OR 0.05 REM THYROID</u></p> <ol style="list-style-type: none"> 1) Uncontrollable release for more than 20 minutes from the: <ol style="list-style-type: none"> a) main stack greater than 6.5×10^4 cps on RR 0-17-051 <u>or</u> b) Reactor Bldg vent greater than 5×10^4 cpm on RR-2/3979 <u>or</u> 2) Continued particulate or iodine release such that analysis of particulate filter or charcoal cartridge results in the following estimated release rates: <ol style="list-style-type: none"> a) main stack greater than 5×10^2 uCi/sec <u>or</u> b) Reactor Bldg vent greater than 3×10^3 uCi/sec <u>or</u> 3) Containment dose rate greater than 10^4 R/hr on RI-8/9103 A/C and RI-8/9103 B/D
SITE EMERGENCY	GENERAL EMERGENCY
<p style="text-align: center;"><u>ACTUAL OR POTENTIAL RELEASE 0.1 REM WHOLE BODY OR 0.5 REM THYROID</u></p> <ol style="list-style-type: none"> 1) Uncontrollable release for more than 20 minutes from the: <ol style="list-style-type: none"> a) main stack greater than 6.5×10^5 cps on RR 0-17-051 <u>or</u> b) Reactor Bldg. vent greater than 5×10^5 cpm on RR-2/3979 <u>or</u> 2) continued particulate or iodine release such that analysis of particulate filter or charcoal cartridge results in the following estimated release rates: <ol style="list-style-type: none"> a) main stack greater than 5×10^3 uCi/sec <u>or</u> b) Reactor Bldg vent greater than 3×10^4 uCi/sec <u>or</u> 3) containment dose rate greater than 10^5 R/hr on RI-8/9103A/C and RI-8/9103B/D 	<p style="text-align: center;"><u>ACTUAL OR POTENTIAL RELEASE 1.0 REM WHOLE BODY OR 5.0 REM THYROID</u></p> <ol style="list-style-type: none"> 1) Uncontrollable release for more than 20 minutes from the: <ol style="list-style-type: none"> a) main stack greater than 1×10^6 cps on RR 0-17-051 <u>or</u> b) Reactor Bldg vent greater than 1×10^6 cpm on RR 2/3979 <u>or</u> 2) continued particulate or iodine release such that analysis of particulate filter or charcoal cartridge results in the following estimated release rates: <ol style="list-style-type: none"> a) main stack greater than 5×10^4 uCi/sec <u>or</u> b) Reactor Bldg vent greater than 3×10^5 uCi/sec <u>or</u> 3) containment dose rate greater than 10^6 R/hr on RI-8/9103A/C and RI-8/9103B/D

FIRE	
UNUSUAL EVENT	ALERT
<p><u>FIRE IN PROTECTED AREA LASTING 10 MIN. OR MORE AFTER INITIAL ATTEMPTS TO EXTINGUISH IT</u></p> <p>1) Alarm and verbal report from SSV</p>	<p><u>FIRE WHICH COULD MAKE AN ECCS INOP</u></p> <p>1) Fire alarm and verbal report from SSV</p>
SITE EMERGENCY	GENERAL EMERGENCY
<p><u>FIRE WHICH MAKES AN ECCS INOP</u></p> <p>1) Fire alarm and verbal report from SSV</p>	<p><u>FIRE WHICH CAUSES DAMAGE TO PLANT SYSTEMS SUFFICIENT TO LEAD TO OTHER GENERAL EMERGENCIES</u></p> <p>1) Fire alarm and verbal report from SSV, and LOCA symptoms, ECCS, or containment failure</p>

ENVIRONMENTAL

UNUSUAL EVENT	ALERT
<p><u>EARTHQUAKE</u></p> <p>1) An actual earthquake detected by seismic instrumentation systems</p> <p><u>ABNORMAL POND LEVEL</u></p> <p>1) Conowingo Pond level on LI-2/3278A, B,C: a) greater than 113 feet <u>or</u> b) less than 104 feet without prior notification by L.D.</p> <p><u>TORNADO</u></p> <p>1) A tornado is observed on site</p> <p><u>HURRICANE</u></p> <p>1) Hurricane is expected to cross the station</p>	<p><u>EARTHQUAKE</u></p> <p>1) An actual earthquake beyond the Operating Basis Earthquake (OBE)</p> <p><u>ABNORMAL POND LEVEL</u></p> <p>1) Conowingo Pond level on LI-2/3278A,B, C: a) greater than 115 feet <u>or</u> b) less than 98.5 feet without prior notification by L.D.</p> <p><u>TORNADO</u></p> <p>1) A tornado strikes the Power Block with identifiable plant damage</p> <p><u>HURRICANE</u></p> <p>1) Station is experiencing a hurricane with winds greater than 100 mph</p>
SITE EMERGENCY	GENERAL EMERGENCY
<p><u>EARTHQUAKE</u></p> <p>1) An earthquake greater than Design Earthquake as detected on seismic instruments</p> <p><u>ABNORMAL POND LEVEL</u></p> <p>1) Conowingo Pond level on LI-2/3278A,B,C exceeding the following limits: a) greater than 116 feet <u>or</u> b) less than 87 feet</p>	

LOSS OF POWER

UNUSUAL EVENT	ALERT
<p style="text-align: center;"><u>LOSS OF OFFSITE OR ONSITE: POWER</u></p> <ol style="list-style-type: none"> 1) turbine generator trip with Startup Auxiliary transformer SU2 and SU3 unavailable for service for more than 60 seconds <u>or</u> 2) loss of voltage on the four 4160 volt emergency busses or 480 volt load centers supplied from the four 4160 volt emergency busses for more than 60 seconds. 	<p style="text-align: center;"><u>LOSS OF OFFSITE AND ONSITE AC POWER FOR LESS THAN 15 MINUTES</u></p> <ol style="list-style-type: none"> 1) turbine generator trip with Startup Auxiliary transformer SU2 and SU3 unavailable for service <u>and</u> 2) failure of <u>all</u> diesel generators to energize their busses. <p style="text-align: center;"><u>LOSS OF ALL DC POWER FOR LESS THAN 15 MIN.</u></p> <ol style="list-style-type: none"> 1) less than 105 volts on the 2/3A,B,C & D distribution panels as indicated on Panels 2/3AD03, 2/3CD03, 2/3BD03, 2/3DD03 <u>and</u> 2) less than 21 volts on the 24 volt distribution panels as indicated on Panels 2/3AD28, 2/3CD28, 2/3BD28, 2/3DD28 <u>and</u> 3) loss of <u>all</u> alarms
SITE EMERGENCY	GENERAL EMERGENCY
<p style="text-align: center;"><u>LOSS OF OFFSITE AND ONSITE AC POWER FOR LONGER THAN 15 MINUTES</u></p> <ol style="list-style-type: none"> 1) turbine generator trip with SU2 and SU3 unavailable for service for longer than 15 minutes <u>and</u> 2) failure of <u>all</u> diesel generators to energize their busses for longer than 15 minutes <p style="text-align: center;"><u>LOSS OF ALL 125 VDC POWER FOR LONGER THAN 15 MINUTES</u></p> <ol style="list-style-type: none"> 1) less than 105 volts on the 2/3A,B, C&D distribution panels as indicated on Panels 2/3AD03, 2/3CD03, 2/3BD03, 2/3DD03 for longer than 15 minutes <u>and</u> 2) less than 21 volts on the 24 volt distribution panels as indicated on Panels 2/3AD28, 2/3CD28, 2/3BD28, 2/3DD28 for longer than 15 min. <u>and</u> 3) loss of all alarms for longer than 15 min. 	

SECONDARY CONTAINMENT

UNUSUAL EVENT	ALERT
<p><u>LOSS OF SECONDARY CONTAINMENT INTEGRITY</u></p> <p>1) loss of secondary containment integrity for greater than 12 hours</p>	<p>N/A</p>
SITE EMERGENCY	GENERAL EMERGENCY
<p>N/A</p>	<p>N/A</p>

INSTRUMENT FAILURE

UNUSUAL EVENT	ALERT
<p><u>SIGNIFICANT LOSS OF ASSESSMENT OR COMMUNICATION CAPABILITY IN THE MAIN CONTROL ROOM</u></p> <p>1) complete loss of all Main Control Room communication equipment</p>	<p>N/A</p>
SITE EMERGENCY	GENERAL EMERGENCY
<p>N/A</p>	<p>N/A</p>

FUEL DAMAGE	
UNUSUAL EVENT	ALERT
<p><u>POSSIBLE FUEL DAMAGE</u></p> <ol style="list-style-type: none"> 1) Air ejector discharge rad monitor high alarm <u>and</u> an increase of 500mR/hr within 30 minutes <u>or</u> a level of 2.5×10^3 mR/hr as indicated on RR-2/3-17-152, <u>or</u> 2) high reactor coolant activity as determined by sample analysis equal to or greater than 2 uCi/gm dose equivalent I-131 	<p><u>FUEL DAMAGE</u></p> <ol style="list-style-type: none"> 1) Air ejector discharge rad monitor indicating greater than 2.5×10^4 mR/hr on RR 2/3-17-152, <u>or</u> 2) High coolant activity of 300 uCi/gm dose equivalent I-131, <u>and</u> main steam line high-high radiation alarm with resultant scram alarm, <u>or</u> 3) spent fuel damage resulting in a refueling floor area radiation monitor alarm <u>or</u> a high radiation alarm on refuel floor exhaust rad monitor
SITE EMERGENCY	GENERAL EMERGENCY
<p><u>FUEL DAMAGE</u></p> <ol style="list-style-type: none"> 1) Following conditions occur: <ol style="list-style-type: none"> a) failure of control rods to fully insert on a scram <u>and</u> b) higher than normal readings on LPRMs adjacent to not-fully-inserted rods <u>and</u> c) at least 2 of the 4 containment rad monitors indicate levels greater than 10^5 R/hr on RI-8/9103A/C and RI-8/9103B/D. 2) Major damage to spent fuel in fuel pool or uncovering of spent fuel as confirmed by a fuel pool area radiation monitor alarm <u>and</u>: <ol style="list-style-type: none"> a) refuel floor exhaust radiation monitor high alarm, <u>or</u> b) refuel floor area radiation monitor alarm <u>or</u> 3) Observed major damage to spent fuel 	<p><u>FUEL DAMAGE</u></p> <ol style="list-style-type: none"> 1) When at least 2 of 4 containment rad monitors indicate levels greater than 10^6 R/hr on RI-8/9103A/C and RI-8/9103B/D <u>and</u> containment pressure exceeds 10 psig on PR 2/3508

HAZARDS

UNUSUAL EVENT	ALERT
<p data-bbox="360 325 621 351"><u>MODERATE HAZARDS</u></p> <ol data-bbox="199 390 811 648" style="list-style-type: none"> 1) Aircraft crash on or near site as determined by Shift Supervision <u>or</u> 2) Significant explosion on or near site as determined by Shift Supervision <u>or</u> 3) Toxic gas release on or near site as determined by Shift Supervision 	<p data-bbox="1070 325 1298 351"><u>SEVERE HAZARDS</u></p> <ol data-bbox="872 390 1546 713" style="list-style-type: none"> 1) Aircraft crash on the facility or missile impacts into the Reactor Bldg. Diesel Generator Bldg. or HPSW pump structure as determined by Shift Supervision <u>or</u> 2) Explosion damage to facility affecting plant safety as determined by Shift Supervision <u>or</u> 3) Chlorine gas detected in the Control Room
SITE EMERGENCY	GENERAL EMERGENCY

CONTROL ROOM EVACUATION

UNUSUAL EVENT	ALERT
<p>N/A</p>	<p><u>REMOTE CONTROL ESTABLISHED</u></p> <p>1) Evacuation of Main Control Room anticipated or required and control established at remote shutdown panels as determined by Shift Supervision</p>
SITE EMERGENCY	GENERAL EMERGENCY
<p><u>REMOTE CONTROL NOT ESTABLISHED</u></p> <p>1) Evacuation of Main Control Room and control of shutdown systems <u>not</u> established at remote shutdown panels in 15 minutes as determined by Shift Supervision</p>	<p>N/A</p>

PHILADELPHIA ELECTRIC COMPANY
PEACH BOTTOM UNITS 2 AND 3
EMERGENCY PLAN IMPLEMENTING PROCEDURE

EP-102 - UNUSUAL EVENT RESPONSE

PURPOSE

The purpose of this procedure is to provide guidelines for response to an Unusual Event.

RESPONSIBILITIES:

- 1.1 The Shift Superintendent or designated alternate shall assume the duties of the Emergency Director and implement this procedure, until relieved.
- 1.2 The Station Superintendent or designated alternate shall relieve the Emergency Director, assume the duties of Emergency Director and continue implementing this procedure, if available

ACTION LEVELS

This procedure shall be implemented when any event occurs that is classified as an Unusual Event per EP-101, Classification of Emergencies.

PRECAUTIONS:

PROCEDURE:

1.0 IMMEDIATE ACTIONS

1.1 The Shift Superintendent shall:

- 1.1.1 Assume duties of the Emergency Director
- 1.1.2 Activate Emergency Teams as necessary and designate appropriate team and group leaders.
- 1.1.3 Contact the Station Superintendent and the Shift Technical Advisor and inform them of the situation.
- 1.1.4 Complete the Unusual Event notification message in Appendix EP 102-1 and direct the communicator (PO or higher) to notify the appropriate parties as specified in Appendix EP-102-1 Unusual Event Telephone Listing.

DO NOT USE BLUE RINGDOWN PHONE FOR THESE CALLS.

CONTROLLED COPY VALID
ONLY WHEN RED

- 1.1.5 Closely monitor conditions to determine present hazards to personnel and potential accident conditions that may develop.
- 1.1.6 Designate a Licensed Operator to notify the NRC on the red phone. After completing the notification request concurrence of the NRC to terminate the telephone conversation, prior to hanging up the phone.
- 1.1.7 Provide station personnel with instructions over the Public Address System on any major changes in plant status, escalation or de-escalation of the classifications, etc. The following messages are examples:

MESSAGE

THIS (IS) (IS NOT) A DRILL, REPEAT, THIS (IS) (IS NOT) A DRILL. ATTENTION ALL PERSONNEL. ATTENTION ALL PERSONNEL. THE EMERGENCY DIRECTOR HAS DECLARED AN UNUSUAL EVENT. ALL ON SHIFT PERSONNEL REPORT TO THE CONTROL ROOM. ALL OTHER PERSONNEL STANDBY FOR FURTHER ANNOUNCEMENTS. THIS (IS) (IS NOT) A DRILL, REPEAT, THIS (IS) (IS NOT) A DRILL.

MESSAGE

THIS (IS) (IS NOT) A DRILL, REPEAT, THIS (IS) (IS NOT) A DRILL. ATTENTION ALL PERSONNEL. ATTENTION ALL PERSONNEL. THE UNUSUAL EVENT HAS BEEN DE-ESCALATED. ALL PERSONNEL SHALL RETURN TO THEIR NORMAL DUTIES. THIS (IS) (IS NOT) A DRILL, REPEAT, THIS (IS) (IS NOT) A DRILL.

- 1.1.8 Direct the evacuation of affected areas as necessary. Refer to the following procedure:

GP-15 Local Evacuation

1.2 Shift Clerk or designated person shall:

- 1.2.1 Notify additional emergency response/support personnel to report to the station, as directed by the Emergency Director/Shift Supervision using the appropriate Appendix to EP-209, Telephone List for Emergency use.
- 1.2.2 Perform the notification of the off site agencies and personnel within 15 minutes as directed by the Emergency Director using Appendix EP-102-1, Unusual Event Message and Appendix EP-102-3, Unusual Event Telephone Listing.

2.0 FOLLOW-UP ACTIONS

2.1 Emergency Director shall:

- 2.1.1 Periodically evaluate the event classification in accordance with EP-101, Classification of Emergencies

and escalate or de-escalate the classification as necessary.

DO NOT USE THE BLUE RING-DOWN PHONES FOR THESE CALLS.

- 2.1.2 If classification is de-escalated, complete Appendix EP-102-3, Unusual Event De-Escalation Message and give it to the communicator and direct communicator to perform the notifications in accordance with Appendix EP-102-2.

DO NOT USE THE BLUE RING-DOWN PHONES

- 2.1.3 Perform actions necessary to mitigate conditions of the emergency situation.
- 2.1.4 Provide site personnel with public address announcements for any major changes in plant status, such as changing emergency actions level and evacuations.

2.2 Shift Clerk shall:

- 2.2.1 Notify additional support personnel to report to the plant as directed by the Emergency Director.
- 2.2.2 Perform notifications, as directed by Emergency Directors to the off-site agencies.

FINAL CONDITIONS:

- 1.0 Contaminated injured person(s) transported to hospital
- 2.0 Fire is out, or under control, fire watch has been posted
- 3.0 All vital areas requiring occupancy are habitable
- 4.0 Site Security is established
- 5.0 Plant is in stable condition and core is cooling
- 6.0 In plant radiation levels are decreasing or are stable
- 7.0 All engineering safeguards are operable
- 8.0 Release of radioactive materials is being controlled and no significant uncontrolled releases are contemplated
- 9.0 All emergency plan implementing procedures are closed out or they have been assigned to an individual for closure

APPENDICES

- Appendix EP-102-1, Unusual Event Notification Message
- Appendix EP-102-2, Unusual Event Notification Telephone Listing

Appendix EP-102-3, Unusual Event De-Escalation Message

REFERENCE

PEAPS Emergency Plan
EP-101 Classification of Emergencies
GP-15, Local Evacuation
EP-209 Telephone Listing for Emergency Use.

APPENDIX EP 102-1

UNUSUAL EVENT NOTIFICATION MESSAGE FORMAT

THIS (IS) (IS NOT) A DRILL. REPEAT THIS (IS) (IS NOT) A DRILL.

THIS IS PEACH BOTTOM ATOMIC POWER STATION CALLING TO REPORT AN

UNUSUAL EVENT FOR UNIT _____. MY NAME IS _____

TELEPHONE NUMBER IS _____. PEACH BOTTOM IS REPORTING

AN UNUSUAL EVENT AT _____
(24 hour clock time) (date) THE BASIS PROBLEM
IS _____

THERE (HAS) (HAS NOT) BEEN AN (AIRBORNE) (LIQUID) RADIOACTIVE RELEASE

FROM THE PLANT. THE PLANT IS (STABLE) (IMPROVING) (DEGRADING) (NOT

KNOWN). THERE ARE NO PROTECTIVE ACTIONS BEING RECOMMENDED AT THIS TIME.

THIS (IS) (IS NOT) A DRILL. REPEAT, THIS (IS) (IS NOT) A DRILL.

UNUSUAL EVENT DE-ESCALATION MESSAGE FORMAT

THIS (IS) (IS NOT) A DRILL. REPEAT, THIS (IS) (IS NOT) A DRILL.

THIS IS PEACH BOTTOM ATOMIC POWER STATION CALLING TO REPORT A CHANGE IN THE
EMERGENCY CLASSIFICATION FOR UNIT NO. _____. MY NAME IS _____.

TELEPHONE NUMBER IS _____. THE UNUSUAL EVENT HAS BEEN TERMINATED.

TIME AND DATE ARE _____,
(24 hr. clock time) (Date)

THE PLANT STATUS IS (STABLE) (IMPROVING). THIS (IS) (IS NOT) A DRILL,
REPEAT, THIS (IS) (IS NOT) A DRILL.

APPENDIX EP-102-2
UNUSUAL EVENT NOTIFICATION TELEPHONE LISTING

TIME INITIATED: _____

PERSONNEL/AGENCIES TO BE NOTIFIED
WITHIN APPROXIMATELY 15 MINUTES

1. EMERGENCY DIRECTOR

ALTERNATE:

2. LOAD DISPATCHER

3. YORK COUNTY EMERGENCY

MANAGEMENT AGENCY

4. PENNSYLVANIA EMERGENCY

MANAGEMENT AGENCY (PEMA)

5. PENNSYLVANIA BUREAU OF

RADIATION PROTECTION
(BRP)

6. NRC OPERATION CENTER,
BETHESDA, MD

SECONDARY NOTIFICATION OF AN UNUSUAL NOTIFICATIONS
TO BE COMPLETED AFTER THE 15 MINUTE NOTIFICATIONS HAVE BEEN COMPLETED

SERGEANT OF THE GUARD
MANAGER, PUBLIC INFORMATION
PRIMARY:

ALTERNATE:

EMERGENCY PREPAREDNESS
PRIMARY:

ALTERNATE:

NOTIFICATION COMPLETED BY: _____

COMMUNICATOR

VERIFIED BY: _____
EMERGENCY DIRECTOR

TIME/DATE: _____

Handwritten:
6-26-85

PHILADELPHIA ELECTRIC COMPANY
PEACH BOTTOM UNITS 2 AND 3
EMERGENCY PLAN IMPLEMENTING PROCEDURE

EP-103 ALERT RESPONSE

PURPOSE

The purpose of this procedure is to provide guidelines for response to an Alert.

RESPONSIBILITIES

- 1.0 Shift Superintendent or designated alternate shall assume the role of the Emergency Director when an Alert Classification is declared, unless the Station Superintendent is present and shall perform the necessary steps in this procedure.
- 1.1 The Station Superintendent or his alternate shall assume the duties of the Emergency Director, report to the Control Room or Technical Support Center and relieve the Shift Superintendent of the responsibilities as the Emergency Director.

ACTION LEVELS:

This procedure shall be implemented when any event occurs that is classified as an Alert per EP-101, Classification of Emergencies.

PRECAUTIONS:

Planned radiation exposures should be limited to the administrative guide levels in Appendix EP-104-4, Emergency Exposure Guidelines.

PROCEDURE:

IMMEDIATE ACTIONS

- 1.1 Shift Supervision shall:
 - 1.1.1 Assume the duties of Emergency Director.
 - 1.1.2 Activate Emergency Teams as necessary and designate appropriate Team and Group Leaders.
 - 1.1.3 Contact the Station Superintendent and the Shift Technical Advisor, inform them of the situation.
 - 1.1.4 Fill out the Alert Notification Message, Appendix EP-103-1, and give it to the Communicator (PO or higher classification) and direct the Communicator to commence notification of the appropriate parties as specified in Alert Notification Telephone Listing, Appendix EP-103-2.

**CONTROLLED COPY VALID
ONLY WHEN RED**

- 1.1.5 Direct the Communicator to man the NRC RED telephone on a continuous basis if required by Procedure A-31. If Communicator is required for urgent plant operations related to the emergency, the concurrence for securing the phone should be obtained from the NRC prior to securing this telephone.
- 1.1.6 Direct the Shift Clerk to activate the 60 Minute Call List using EP-209, Appendix P. If Shift Clerk is not available, this function shall be assigned to any available individual.
- 1.1.7 Direct one of the on-shift I&C Technicians to activate the Technical Support Center and Emergency Operations Facility in accordance with EP-201 and EP-203. Inform Shift Clerk which I&C Technician will activate the centers at Unit 1 in order that the clerk will know which remaining I&C Technician to call for the prompt mobilization procedure.
- 1.1.8 Direct the Dose Assessment Team Leader to initiate off-site radiation surveys as necessary, in accordance with EP-205B, Radiation Survey Groups.
- 1.1.9 Direct the Personnel Safety Team Leader to initiate on-site radiation surveys as necessary, in accordance with EP-205B, Radiation Survey Groups.
- 1.1.10 Assign an Operations Support Center Coordinator (shift PO) and direct available shift personnel to report to the Operations Support Center on 135' elev. Turbine Building and to activate it in accordance with EP-202, if habitable. If this Operations Support Center is NOT habitable, direct shift personnel to report to the Control Room.
- 1.1.11 Closely monitor conditions to determine present hazards to personnel and potential accident conditions that may develop.
- 1.1.12 For samples, direct the on-shift Chemistry Technician or Chemistry Sampling and Analysis Team Leader to implement EP-205A, Chemistry Sampling and Analysis Team Activation.
- 1.1.13 For fire and damage repair, direct the Maintenance Shift Assistant Foreman or the Fire and Damage Team Leader to implement EP-206A, Fire Fighting Group and/or EP-206B Damage Repair Group.
- 1.1.14 For liquid release, implement EP-312, Radioactive Liquid Release, if required.
- 1.1.15 For security matters, contact Security Shift Supervisor and direct implementation of EP-208, Security Team Activation, if necessary.

- 1.1.16 Direct the evacuation of affected areas as necessary. Refer to the following procedures:

GP-15 Local Evacuation
EP-303 Partial Plant Evacuation
EP-305 Site Evacuation
EP-306 Evacuation of the Information Center

- 1.1.17 Provide station personnel with instructions over the Public Address System on any major changes in plant status, escalation or de-escalation of the classifications, etc. The following messages are examples:

MESSAGE

THIS (IS) (IS NOT) A DRILL, REPEAT, THIS (IS) (IS NOT) A DRILL. ATTENTION ALL PERSONNEL. ATTENTION ALL PERSONNEL. THE EMERGENCY DIRECTOR HAD DECLARED AN ALERT. ALL SHIFT PERSONNEL REPORT TO THE CONTROL ROOM. ALL MEMBERS OF THE EMERGENCY RESPONSE ORGANIZATION REPORT TO YOU EMERGENCY FACILITY OR EMERGENCY LOCATIONS. ALL NON-ESSENTIAL PERSONNEL AND VISITORS AWAIT FURTHER PUBLIC ADDRESS INSTRUCTIONS. THIS (IS) (IS NOT) A DRILL, REPEAT, THIS (IS) (IS NOT) A DRILL.

MESSAGE

THIS (IS) (IS NOT) A DRILL, REPEAT, THIS (IS) (IS NOT) A DRILL. ATTENTION ALL PERSONNEL. ATTENTION ALL PERSONNEL. THE ALERT CLASSIFICATION HAS BEEN DE-ESCALATED TO AN (UNUSUAL EVENT OR TERMINATED). ALL PERSONNEL SHALL WAIT INSTRUCTIONS FROM THEIR TEAM LEADERS OR SUPERVISORS. THIS (IS) (IS NOT) A DRILL, REPEAT, THIS (IS) (IS NOT) A DRILL.

2.0 FOLLOW-UP ACTIONS

2.1 The Emergency Director shall:

- 2.1.1 Verify that the Technical Support Center, Operations Support Center, and Auxiliary OSC have been activated.
- 2.1.2 Periodically evaluate the event classification in accordance with EP-101, Classification of Emergencies, and escalate or de-escalate the classification, as necessary.
- 2.1.3 If the classification is de-escalated, complete Appendix EP-103-3, Alert De-Escalation Notification Message and give it to the communicator and direct the communicator to perform the notifications in accordance with Appendix EP-103-2.

- 2.1.4 Obtain the results of the EP-316, Cumulative Population Dose Calculations from the Dose Assessment Team Leader and on-site radiation surveys from the Personnel Safety Team Leader, as necessary.
 - 2.1.5 Notify the Bureau of Radiation Protection of any change in radiological conditions.
 - 2.1.6 Perform actions as necessary to mitigate conditions of the emergency situation.
 - 2.1.7 Determine which additional support personnel are necessary for emergency functions and direct the Shift Clerk or other assigned communicator in TSC to contact those personnel, using the appropriate Appendix to EP-209, Emergency Telephone Listing.
 - 2.1.8 Provide site personnel with P.A. speaker announcements for any major changes in plant emergency status, such as changing emergency action levels and evacuations.
- 2.2 The Station Superintendent shall:
- 2.2.1 Report to the Technical Support Center or Control Room for a briefing of the situation, if not already acting as the Emergency Director.
 - 2.2.2 Assume the role of Emergency Director by formally relieving the Shift Superintendent. Announce that he has assumed the role of Emergency Director to the assembled Technical Support Center personnel.
 - 2.2.3 Verify the emergency classification.
 - 2.2.4 Verify that the Technical Support Center, the Emergency Operations Facility, the Operations Support Center and the Auxiliary Operations Support Center have been activated.
 - 2.2.5 If applicable, brief the Site Emergency Coordinator.
- 2.3 Operations Support Center Coordinator shall:
- 2.3.1 Notify the Emergency Director when their respective Operations Support Center is activated.
 - 2.3.2 Provide support to the Control Room and Shift Supervision as necessary.
- 2.4 Auxiliary Operations Support Center Coordinator shall:
- 2.4.1 Notify the Personnel Safety Team Leader or Emergency Director that the Auxiliary Operations Support Center is activated.

- 2.4.2 Provide Health Physics support to teams as directed by Personnel Safety Team Leader.
- 2.5 Dose Assessment Team Leader shall:
 - 2.5.1 Report progress and results of EP-316, Cumulative Population Dose Calculations and off-site radiation surveys to the Emergency Director or Site Emergency Coordinator, as necessary.
- 2.6 Personnel Safety Team Leader shall:
 - 2.6.1 Report progress and results of on-site radiation surveys to the Emergency Director as necessary.
- 2.7 Shift Clerk or assigned TSC Communicator shall:
 - 2.7.1 Notify additional support personnel to report to the plant as directed by the Emergency Director. Refer to the appropriate Appendix of EP-209.
 - 2.7.2 Notify the Emergency Director when the additional support personnel have been notified.
- 2.8 Shift I&C Technician shall:
 - 2.8.1 Inform the Emergency Director when the TSC and EOF are activated.
 - 2.8.2 Man the TSC and EOF data display (CCTV) positions as directed by the Emergency Director.
- 2.9 Chemistry Sampling and Analysis Team Leader shall:
 - 2.9.1 Report progress and results of any sampling activities and their results, if appropriate, to the Emergency Director.
- 2.10 Security Team Leader shall:
 - 2.10.1 Provide a briefing of the security situation, as required, to the Emergency Director, providing status on the Security Force manning.
- 2.11 Fire and Damage Team Leader shall:
 - 2.11.1 Provide a briefing on fire and damage assessment activities to the Emergency Director, if appropriate.
- 2.12 Technical Support Team Leader shall:
 - 2.12.1 Dispatch available communicators, status board keepers, etc., to support the activities in the various emergency response centers.
 - 2.12.2 Provide engineering assessments on the emergency situation, as requested by the Emergency Director.

FINAL CONDITIONS:

- 1.0 Contaminated injured person(s) transported to hospital.
- 2.0 Fire is out, or under control, firewatch has been posted.
- 3.0 All vital areas requiring occupancy are habitable.
- 4.0 Site security is established.
- 5.0 Plant is in stable condition and core is cooling.
- 6.0 In plant radiation levels are decreasing or are stable.
- 7.0 All engineering safeguards are operable.
- 8.0 Release of radioactive materials is being controlled and no significant uncontrolled releases are contemplated.
- 9.0 All Emergency Plan Implementing Procedures are closed out or they have been assigned to an individual for closure.

APPENDICES:

Appendix EP-103-1, Alert Notification Message

Appendix EP-103-2, Alert Notification/Telephone Listing

Appendix EP-103-3, Alert De-Escalation Message

REFERENCES:

PBAPS Emergency Plan

NUREG 0654

EP-101, Classification of Emergencies

GP-15, Local Evacuation

EP-303, Partial Plant Evacuation

EP-305, Site Evacuation

EP-306, Evacuation of Information Center

APPENDIX EP-103-1

ALERT NOTIFICATION MESSAGE

Message: This (is) (is not) a drill. This (is) (is not) a drill. This is
Peach Bottom Atomic Power Station calling to report an Alert has been declared
on Unit No. _____. My name is _____, telephone number
is _____. Time and date of Alert classification is _____,
(24 hr clock)
_____. The basic problem is _____
(Date)

_____.
There (is presently) (has not been) (is potential for) (has been) a radioactive
(airborne) (liquid) release from the plant. The plant status is (stable)
(improving) (degrading) (not known). There are no recommended protective
actions at this time. This (is) (is not) a drill. This (is) (is not) a drill.

APPENDIX EP-103-2

ALERT NOTIFICATION TELEPHONE LISTING

TIME INITIATED: _____

PERSONNEL/AGENCIES TO BE NOTIFIED WITHIN 15 MINUTES	PHONE NUMBERS	TIME	PERSON NOTIFIED/ DISPOSITION
11. EMERGENCY DIRECTOR ALTERNATE:			
12. LOAD DISPATCHER			
13. PENNSYLVANIA EMERGENCY MANAGEMENT AGENCY (PEMA)			
14. MARYLAND EMERGENCY MANAGEMENT & CIVIL DEFENCE AGENCY			
15. YORK COUNTY EMERGENCY MANAGEMENT AGENCY			
16. LANCASTER COUNTY EMERGENCY MANAGEMENT AGENCY			
17. CHESTER COUNTY EMERGENCY MANAGEMENT AGENCY			
18. HARFORD COUNTY DEPARTMENT OF EMERGENCY SERVICES			
19. CECIL COUNTY DEPARTMENT OF EMERGENCY SERVICES			

APPENDIX EP-103-2

ALERT NOTIFICATION TELEPHONE LISTING

10. BUREAU OF RADIATION
PROTECTION (BRP)

11. PENNSYLVANIA STATE POLICE
YORK BARRACKS

12. NRC OPERATIONS CENTER
BETHESDA, MD

13. SERGEANT OF THE GUARD

14. MANAGER, PUBLIC INFORMATION
PRIMARY:

ALTERNATE: N.

15. EMERGENCY PREPAREDNESS
PRIMARY:

ALTERNATE:

NOTIFICATION COMPLETED BY: _____ TIME/DATE: _____
COMMUNICATOR

VERIFIED BY: _____
EMERGENCY DIRECTOR

APPENDIX EP-103-3

ALERT DE-ESCALATION NOTIFICATION MESSAGE

THIS (IS) (IS NOT) A DRILL. REPEAT, THIS (IS) (IS NOT) A DRILL. THIS IS
PEACH BOTTOM ATOMIC POWER STATION CALLING TO REPORT A CHANGE IN THE
EMERGENCY CLASSIFICATION. MY NAME IS _____, TELEPHONE
NUMBER _____. THE ALERT ON UNIT NO. _____ HAS BEEN (DE-ESCALATED
TO AN UNUSUAL EVENT) (TERMINATED). TIME AND DATE ARE _____,
(24 hr clock)
_____. THE PLANT STATUS IS (STABLE) (IMPROVING). THIS (IS) (IS NOT)
(Date)
A DRILL. REPEAT, THIS (IS) (IS NOT) A DRILL.

Handwritten:
6-14-85

PHILADELPHIA ELECTRIC COMPANY
PEACH BOTTOM UNITS 2 AND 3
EMERGENCY PLAN IMPLEMENTING PROCEDURE

EP-104 SITE EMERGENCY RESPONSE

PURPOSE:

The purpose of this procedure is to provide guidelines for response to a Site Emergency.

RESPONSIBILITIES:

- 1.0 Shift Superintendent or designated alternate shall assume the role of the Emergency Director when a Site Emergency is declared, unless the Station Superintendent is present, and perform the necessary steps in this procedure.
- 1.1 The Station Superintendent or his alterante shall assume the role of the Emergency Director, report to the Technical Support Center or Control Room and relieve the Shift Superintendent of the responsibilities as the Emergency Director.
- 1.2 Site Emergency Coordinator shall report to the Emergency Operations Facility or the Alternate Emergency Operations Facility and implement the appropriate section(s) of this procedure, if necessary.

ACTION LEVELS:

This procedure shall be implemented when an event occurs that is classified as a Site Emergency per EP-101, Classification of Emergencies.

PRECAUTIONS:

Planned radiation exposures should be limited to the Administration Guide Levels in Appendix EP-104-4, Emergency Exposure Limits.

PROCEDURE:

IMMEDIATE ACTIONS

- 1.1 Shift Supervision shall:
 - 1.1.1 Assume the duties of Emergency Director.
 - 1.1.2 If not already done at an earlier emergency action level, activate Emergency Teams as necessary, designate appropriate team and group leaders.
 - 1.1.3 Contact the Station Superintendent and the Shift Technical Advisor, inform them of the situation.

**CONTROLLED COPY VALID
ONLY WHEN RED**

- 1.1.4 Fill out Appendix EP-104-1, Site Emergency Notification Message and give it to the Communicator (PO or higher classification) and direct the Communicator to commence notification of the appropriate parties per Appendix EP-104-3, Site Emergency Notification Telephone Listing.
- 1.1.5 Direct the Communicator to man the NRC RED Telephone on a continuous basis, if required by A-31. If Communicator is required for urgent plant operations related to the emergency, the concurrence for securing the phone should be obtained from NRC prior to securing this telephone.
- 1.1.6 If not already accomplished at the ALERT stage, direct the shift clerk to activate the 60 minute call list using EP-209 Appendix P, If shift clerk is not available, this function may be assigned to any available individual.
- 1.1.7 Direct one of the on-shift I&C technicians to activate the Technical Support Center and Emergency Operations Facility in accordance with EP-201 and 203, if not already activated. If not already performed previously, inform the shift clerk which I&C Technician will activate the centers at Unit 1 in order to let the clerk know which remaining I&C Technician to call for the prompt mobilization procedure.
- 1.1.8 Direct the Dose Assessment Team Leader to initiate off-site radiation surveys, as necessary, if not already done in accordance with EP-205B, Radiation Survey Groups.
- 1.1.9 Direct the Personnel Safety Team Leader to initiate on-site radiation surveys as necessary, if not already done in accordance with EP-205B Radiation Survey Groups.
- 1.1.10 Assign an Operations Support Center Coordinator (Shift PO) if not already done and direct available shift personnel to report to this Operations Support Center and to activate it in accordance with EP-202 if habitable. If the Operations Support Center is not habitable, direct shift personnel to report to the Control Room.
- 1.1.11 Closely monitor conditions to determine present hazards to personnel and potential accident conditions that may develop.
- 1.1.12 For samples, direct on-shift Chemistry Technician or Chemistry Sampling and Analysis Team Leader to implement EP-205A, Chemistry Sampling and Analysis Team Activation.
- 1.1.13 For Fire and Damage Repair, direct the Maintenance Shift Assistant Foreman or the Fire and Damage Team Leader to implement EP-206A, Fire Fighting Group and/or EP-206B, Damage Repair Group.
- 1.1.14 For a liquid release, implement EP-312, Radioactive Liquid Release, if required.

1.1.15 For Security matters, contact Security Shift Supervision and direct implementation of EP-208, Security Team Activation, if necessary.

1.1.16 If appropriate, direct the evacuation of affected areas as necessary. Refer to the following procedures:

- GP-15 Location Evacuation
- EP-303 Partial Plant Evacuation
- EP-305 Site Evacuation
- EP-306 Evacuation of the Information Center

1.1.17 Provide station personnel with instructions over the Public Address System on any major changes in plant status, upgrading or downgrading the classifications, etc. The following messages are an example:

MESSAGE

THIS (IS) (IS NOT) A DRILL, REPEAT, THIS (IS) (IS NOT) A DRILL. ATTENTION ALL PERSONNEL. ATTENTION ALL PERSONNEL. THE EMERGENCY DIRECTOR HAS DECLARED A SITE EMERGENCY. ALL ON SHIFT PERSONNEL REPORT TO THE CONTROL ROOM. ALL MEMBERS OF THE EMERGENCY RESPONSE ORGANIZATION REPORT TO YOUR EMERGENCY FACILITIES OR EMERGENCY LOCATIONS. A SITE EVACUATION HAS BEEN DECLARED. ALL NON-ESSENTIAL PERSONNEL SHALL REPORT TO (THEIR WORK LOCATIONS) (NORTH SUB STATION) (PRESIDENT'S UTILITY BUILDING) (DELTA SERVICE BUILDING). ALL VISITORS WILL REPORT WITH THEIR ESCORTS TO THE SECURITY ADMINISTRATION BUILDING AND AWAIT FURTHER INSTRUCTIONS. THIS (IS) (IS NOT) A DRILL, REPEAT, THIS (IS) (IS NOT) A DRILL.

MESSAGE

THIS (IS) (IS NOT) A DRILL, REPEAT, THIS (IS) (IS NOT) A DRILL. ATTENTION ALL PERSONNEL. ATTENTION ALL PERSONNEL. THE SITE EMERGENCY HAS BEEN (DE-ESCALATED TO AN (UNUSUAL EVENT) (ALERT) (TERMINATED)). ALL PERSONNEL SHALL AWAIT INSTRUCTIONS FROM THEIR TEAM LEADERS OR SUPERVISOR. THIS (IS) (IS NOT) A DRILL, REPEAT, THIS (IS) (IS NOT) A DRILL.

1.1.18 If necessary, direct Dose Assessment Team Leader to initiate the implementation of EP-315, Corporate Computer Dose Calculations, or EP-316, Cumulative Population Dose Calculations, and EP-317, Direct Recommendations to County Emergency Management and Civil Defense Agencies.

2.0 FOLLOW-UP ACTIONS

2.1 Emergency Director shall:

- 2.1.1 Verify that the Technical Support Center, Operations Support Center and Aux. OSC have been activated.
- 2.1.2 Periodically evaluate the event classification in accordance with EP-101, Classification of Emergencies and escalate or de-escalate the classification, as necessary.
- 2.1.3 If the classification is de-escalated, complete Appendix EP-104-3, Site Emergency De-Escalation Notification Message and give it to the Communicator to perform notifications in accordance with Appendix EP-104-2.
- 2.1.4 Obtain results of the EP-316, Cumulative Population Dose Calculations and offsite radiation surveys from the Dose Assessment Team Leader.
- 2.1.5 Obtain on-site Plant Radiation Surveys from the Personnel Safety Team Leader, as necessary.
- 2.1.6 Provide appropriate information from the previous evaluations to Communicator in the EOC for notification of the Bureau of Radiation Protection.
- 2.1.7 Perform actions as necessary to mitigate conditions of the emergency situation.
- 2.1.8 If not already performed, determine which additional support personnel are necessary for emergency functions and direct the shift clerk or other assigned communicator to contact those personnel.
- 2.1.9 Provide site personnel with P.A. speaker announcements for any major changes in plant emergency status, such as changing emergency action levels and evacuations.
- 2.1.10 Direct the Evacuation of affected areas as necessary. Refer to the following procedure:

- GP 15 Local Evacuation
- EP 303 Partial Plant Evacuation
- EP 305 Site Evacuation
- EP 306 Evacuation of the Information Center

2.2 Station Superintendent shall:

- 2.2.1 Report to the Technical Support Center or Control Room, for a briefing of the situation, if not already acting as the Emergency Director.

- 2.2.2 Assume the role of Emergency Director (if not already done) by formally relieving the Shift Superintendent of this responsibility. Announce that he has assumed the role of the Emergency Director to the assembled Technical Support Center personnel.
- 2.2.3 Verify the emergency classification.
- 2.2.4 Verify that the Technical Support Center, Emergency Operations Facility and the Operations Support Center have been activated.
- 2.3 Operations Support Center Coordinator shall:
 - 2.3.1 Notify the Emergency Director when the Operations Support Center is activated.
 - 2.3.2 Provide support to the Control Room and Shift Supervision as necessary.
- 2.4 Auxiliary Operations Support Center Coordinator shall:
 - 2.4.1 Notify the Personnel Safety Team or Emergency Director that the Auxiliary Operations Support Center is activated.
 - 2.4.2 Provide Health Physics support to teams as directed by Personnel Safety Team Leader.
- 2.5 Dose Assessment Team Leader shall:
 - 2.5.1 Notify the Emergency Director when the Emergency Operations Facility is manned.
 - 2.5.2 Report progress and results of EP-316, Cumulative Population Dose Calculations and off site radiation surveys.
 - 2.5.3 Notify the Site Emergency Coordinator of the need for assistance from Radiation Management Corporation.
- 2.6 Personnel Safety Team Leader shall:
 - 2.6.1 Report progress and results of on-site radiation surveys to the Emergency Director as necessary.
- 2.7 Shift Clerk or other assigned person shall:
 - 2.7.1 If not already done, notify additional support personnel to report to the plant as directed by the Emergency Director. Refer to the appropriate appendix of EP-209.
 - 2.7.2 Notify Emergency Director or Site Emergency Coordinator when the additional support personnel have been notified.

- 2.8 I&C Technicians shall: (if not already performed as per EP-103)
 - 2.8.1 Inform the Emergency Director when the centers are activated, if not previously done.
 - 2.8.2 Man the TSC or EOF data display (CCTV) positions as directed by the Emergency Director.
- 2.9 Chemistry Sampling and Analysis Team Leader shall:
 - 2.9.1 Report progress and results of any sampling activities and their results, if appropriate to the Emergency Director.
- 2.10 Security Team Leader shall:
 - 2.10.1 Provide a briefing of the security situation, as required, to the Emergency Director, providing status on the Security Force manning.
- 2.11 Fire and Damage Team Leader shall:
 - 2.11.1 Provide a briefing on fire and damage assessment activities to the Emergency Director, if appropriate.
- 2.12 Technical Support Team Leader shall:
 - 2.12.1 Dispatch available communicators, status board keepers, etc. to support the activities in the various emergency response centers.
 - 2.12.2 Provide engineering assessments on the emergency situation, as requested by the Emergency Director.

FINAL CONDITIONS:

- 1.0 Contaminated injured person(s) transported to hospital.
- 2.0 Fire is out, or under control, firewatch has been posted.
- 3.0 All vital areas requiring occupancy are habitable.
- 4.0 Site security is established.
- 5.0 Plant is in stable condition and core is cooling.
- 6.0 In plant radiation levels are decreasing or are stable.
- 7.0 All engineering safeguards are operable.
- 8.0 Release of radioactive materials is being controlled and no significant uncontrolled releases are contemplated.

9.0 All Emergency Plan implementing procedures are closed out or they have been assigned to an individual for closure.

APPENDICES:

Appendix EP-104-1, Alert Notification Message
Appendix EP-104-2, Alert Notification/Telephone Listing
Appendix EP-104-3, Alert De-Escalation Message
Appendix EP-104-4, Emergency Exposure Guidelines

REFERENCES:

FBAPS Emergency Plan
NUREG 0654
EP-101, Classification of Emergencies
GP-15, Local Evacuation
EP-303, Partial Plant Evacuation
EP-305, Site Evacuation
EP-306, Evacuation of Information Center

APPENDIX EP-104-1

SITE EMERGENCY NOTIFICATION CHECKOFF LIST

Message: This (is) (is not) a drill. This (is) (is not) a drill. This
is Peach Bottom Atomic Power Station calling to report a Site Emergency has
been declared on Unit _____. My name is _____, telephone
number is _____. Time and date of Site Emergency classification
is _____, _____. The basic problem is _____
(24 hr clock) (Date)

There (has not been) (is potential for) (has been) (is presently) a
radioactive (airborne) (liquid) release from the plant. The plant status
is (stable) (improving) (degrading) (not known). Recommended protective
actions are (none) _____.

This (is) (is not) a drill. This (is) (is not) a drill.

APPENDIX EP-104-2

SITE EMERGENCY NOTIFICATION TELEPHONE LISTING

TIME INITIATED: _____

PERSONNEL/AGENCIES TO BE NOTIFIED WITHIN 15 MINUTES	PHONE NUMBERS	TIME	PERSON NOTIFIED/ DISPOSITION
1. EMERGENCY DIRECTOR ALTERNATE:			
2. LOAD DISPATCHER			
3. PENNSYLVANIA EMERGENCY MANAGEMENT AGENCY (PEMA)			
4. MARYLAND EMERGENCY MANAGEMENT & CIVIL DEFENCE AGENCY			
5. YORK COUNTY EMERGENCY MANAGEMENT AGENCY			
6. LANCASTER COUNTY EMERGENCY MANAGEMENT AGENCY			
7. CHESTER COUNTY EMERGENCY MANAGEMENT AGENCY			
8. HARFORD COUNTY DEPARTMENT OF EMERGENCY SERVICES			
9. CECIL COUNTY DEPARTMENT OF EMERGENCY SERVICES			

APPENDIX EP-104-2

SITE EMERGENCY NOTIFICATION TELEPHONE LISTING

10.	BUREAU OF RADIATION PROTECTION (BRP)
11.	PENNSYLVANIA STATE POLICE YORK BARRACKS
12.	NRC OPERATIONS CENTER BETHESDA, MD
13.	SERGEANT OF THE GUARD
14.	MANAGER, PUBLIC RELATIONS PRIMARY: ALTERNATE:
15.	EMERGENCY PREPAREDNESS PRIMARY: ALTERNATE:

NOTIFICATION COMPLETED BY: _____ COMMUNICATOR TIME/DATE: _____

VERIFIED BY: _____ EMERGENCY DIRECTOR

APPENDIX EP-104-3

GENERAL EMERGENCY DE-ESCALATION NOTIFICATION MESSAGE

THIS (IS) (IS NOT) A DRILL. REPEAT, THIS (IS) (IS NOT) A DRILL. THIS IS
PEACH BOTTOM ATOMIC POWER STATION CALLING TO REPORT A CHANGE IN THE
EMERGENCY ACTION LEVEL. MY NAME IS _____, TELEPHONE
NUMBER _____. THE SITE EMERGENCY ON UNIT NO. _____ HAS BEEN
DE-ESCALATED TO (AN UNUSUAL EVENT) (AN ALERT) (AN SITE EMERGENCY) (TERMINATED).
TIME AND DATE ARE _____, _____. THE PLANT STATUS IS (STABLE)
(24 hr clock) (Date)
(IMPROVING). THIS (IS) (IS NOT) A DRILL. REPEAT, THIS (IS) (IS NOT) A DRILL.

APPENDIX EP-104-4

EMERGENCY EXPOSURE GUIDELINES

<u>Function</u>	<u>Projected Whole Body Dose</u>	<u>Thyroid Dose</u>	<u>Authorized By</u>
1. Life Saving and Reduction of Injury	75 rem*	375 rem	Emergency** Director
2. Operation of Equipment to Mitigate an Emergency	25 rem*	125 rem	Emergency** Director
3. Protection of Health and Safety of the Public	5 rem	25 rem	Emergency Director
4. Other Emergency Activities	10 CFR 20 limits	10 CFR 20 limits	Emergency Director
5. Re-Entry/Recovery Activities	Administrative Guidelines	Administrative Guidelines	N/A

*Reference: EPA-520/1-75-001 Table 2.1

**Such exposure shall be on a voluntary basis

W. Smith
6-14-85

PHILADELPHIA ELECTRIC COMPANY
PEACH BOTTOM UNITS 2 AND 3
EMERGENCY PLAN IMPLEMENTING PROCEDURE

EP-105 GENERAL EMERGENCY RESPONSE

PURPOSE

The purpose of this procedure is to provide guidelines for response to a General Emergency.

RESPONSIBILITIES:

- 1.1 Shift Superintendent or designated alternate shall assume the role of Emergency Director and implement this procedure until relieved.
- 1.2 Station Superintendent or designated alternate shall report to the Technical Support Center or Control Room, relieve the Shift Superintendent, and continue implementing this procedure, if necessary.
- 1.3 Site Emergency Coordinator shall report to the Emergency Operations Facility or the Alternate EOF and perform the appropriate sections of this procedure, if necessary.

ACTION LEVELS:

This procedure shall be implemented when an event occurs that is classified as a General Emergency per EP-101, Classification of Emergencies.

PRECAUTIONS:

Planned radiation exposures should be limited to the Administrative Guide levels in Appendix EP-105-4, Emergency Exposure Limits.

PROCEDURE:

1.0 IMMEDIATE ACTIONS

1.1 Shift Supervision shall:

- 1.1.1 Assume the duties of Emergency Director.
- 1.1.2 Activate Emergency Teams as necessary, if not already accomplished at an earlier emergency action level.
- 1.1.3 Contact the Station Superintendent and the Shift Technical Advisor, inform them of the situation.

CONTROLLED COPY
ONLY WHEN
737

- 1.1.4 Fill out Appendix EP 105-1 General Emergency Notification Message and direct Communicator (PO or higher classification) to commence notifications of the appropriate parties per Appendix EP-105-2, General Emergency Notification Telephone Listing.
- 1.1.5 Direct the Communicator to a man the NRC RED Telephone on a continuous basis if required by A-31. If communicator is required for urgent plant operations related to the emergency, the concurrence for securing the phone should be obtained from the NRC prior to securing this telephone.
- 1.1.6 If not already accomplished at the ALERT or SITE EMERGENCY stage, direct the shift clerk to activate the 60 minute call list using EP-209, Appendix P. If shift clerk is not available, this function may be assigned to any available individual.
- 1.1.7 Direct one of the on-shift I&C Technicians to activate the Technical Support Center and the Emergency Operations Facility in accordance with EP-201 and 203, if not already activated.
- 1.1.8 Direct the Dose Assessment Team Leader to initiate offsite radiation surveys, as necessary, in accordance with EP-205B, Radiation Survey Groups, if not already done.
- 1.1.9 Direct the Personnel Safety Team Leader to initiate on-site radiation surveys as necessary, in accordance with EP-205B, Radiation Survey Groups, if not already done.
- 1.1.10 Assign an Operations Support Center Coordinator (Senior PO) if not already done and direct available shift personnel to report to report to the Operations Support Center and to activate it in accordance with EP-202, if habitable. If the Operations Support Center is NOT habitable, direct shift personnel to report to the control room.
- 1.1.11 Closely monitor conditions to determine present hazards to personnel and potential accident conditions that may develop.
- 1.1.12 For samples, direct onshift Chemistry Technician or Chemistry Sampling and Analysis Team Leader to implement EP-205A, Chemistry Sampling and Analysis Team Activation.
- 1.1.13 For fire and damage repair, direct the Maintenance Shift Assistant Foreman or the Fire and Damage Team Leader to implement EP-206A, Fire Fighting Group and/or EP-206B Damage Repair Group.
- 1.1.14 For a liquid release, implement EP-312, Radioactive Liquid Release, if required.
- 1.1.15 For security matters, contact Security Shift Supervisor and direct implementation of EP-208, Security Team Activation, if necessary.

- 1.1.16 If appropriate, direct the evacuation of affected areas as necessary. Refer to the following procedures:

GP-15 Local Evacuation
EP-303 Partial Plant Evacuation
EP-305 Site Evacuation
EP-306 Evacuation of the Information Center

- 1.1.17 Provide station personnel with instructions over the Public Address System on any major changes in plant status, upgrading or downgrading the classifications, etc. The following message is an example:

MESSAGE

THIS (IS) (IS NOT) A DRILL, REPEAT, THIS (IS) (IS NOT) A DRILL. ATTENTION ALL PERSONNEL. ATTENTION ALL PERSONNEL. THE EMERGENCY DIRECTOR HAS DECLARED A GENERAL EMERGENCY. ALL ON SHIFT PERSONNEL REPORT TO THE CONTROL ROOM. ALL MEMBERS OF THE EMERGENCY RESPONSE ORGANIZATION SHALL REPORT TO THEIR EMERGENCY FACILITIES OR EMERGENCY LOCATIONS. ALL NON-ESSENTIAL PERSONNEL AND VISITORS SHOULD EVACUATE THE STATION AND RE-ASSEMBLE AT THE (NORTH SUB STATION) (PRESIDENT'S UTILITY BUILDING) (DELTA SERVICE BUILDING). THIS (IS) (IS NOT) A DRILL, REPEAT, THIS (IS) (IS NOT) A DRILL.

MESSAGE

THIS (IS) (IS NOT) A DRILL, REPEAT, THIS (IS) (IS NOT) A DRILL. ATTENTION ALL PERSONNEL. ATTENTION ALL PERSONNEL. THE GENERAL EMERGENCY HAS BEEN ((DE-ESCALATED TO AN (UNUSUAL EVENT) (ALERT) (TERMINATED))). ALL PERSONNEL SHALL AWAIT INSTRUCTIONS FROM THEIR TEAM LEADERS OR SUPERVISOR. THIS (IS) (IS NOT) A DRILL, REPEAT, THIS (IS) (IS NOT) A DRILL.

- 1.1.18 If necessary, direct Dose Assessment Team Leader to initiate the implementation of EP-315, Corporate Computer Dose Calculations, or EP-316, Cumulative Population Dose Calculations, and EP-317, Direct Recommendations to County Emergency Management and Civil Defense Agencies.

2.0 FOLLOW-UP ACTIONS

2.1 Emergency Director shall:

- 2.1.1 Verify that the Technical Support Center, OSC, Aux. OSC, and EOF have been activated.
- 2.1.2 Periodically evaluate the event classification in accordance with EP-101, Classification of Emergencies. If the conditions change, de-escalate to an appropriate classification.

- 2.1.3 If classification is de-escalated, complete Appendix EP-105-3, General Emergency De-escalation Message and direct the communication to perform notifications in accordance with Appendix EP-105-2.
 - 2.1.4 Obtain results of the EP-316 Cumulative Population Dose Calculations offsite radiation surveys from the Dose Assessment Team Leader.
 - 2.1.5 Obtain onsite radiation surveys from the Personnel Safety Team Leader.
 - 2.1.6 Referring to EP-317, direct recommendations to County Emergency Management and Civil Defense Agencies and provide appropriate information from the previous evaluations and Protective Action recommendations to a Communicator in the EOF for notification of the Bureau of Radiation Protection.
 - 2.1.7 Perform actions as necessary to mitigate conditions of the emergency situation.
 - 2.1.8 If not already performed, determine which additional support personnel are necessary for emergency functions and direct the shift clerk or other assigned person to contact those personnel.
 - 2.1.9 Provide site personnel with PA speaker announcements for any major changes in plant emergency status, such as changing emergency action levels.
 - 2.1.10 Direct the evacuation of affected areas, as necessary. Refer to the following procedures:
 - GP 15 Local Evacuation
 - EP 303 Partial Plant Evacuation
 - EP 305 Site Evacuation
 - EP 306 Evacuation of the Information Center
- 2.2 The Station Superintendent shall:
- 2.2.1 Report to the Technical Support Center or Control Room, for a briefing of the situation.
 - 2.2.2 Assume the role of Emergency Director (if not already done) by formally relieving the Shift Superintendent. Announce that he has assumed the role of Emergency Director to the assembled Technical Support Center personnel.
 - 2.2.3 Verify the emergency classification.
 - 2.2.4 Verify that the Technical Support Center, Emergency Operations Facility, Operations Support Center, and Aux. OSC have been activated.

- 2.3 Operations Support Center Coordinator shall:
 - 2.3.1 Notify the Emergency Director when the Operations Support Center is activated.
 - 2.3.2 Support the Control Room and Shift Supervision as necessary.
- 2.4 Auxiliary Operations Support Center Coordinator shall:
 - 2.4.1 Notify the Personnel Safety Team or Emergency Director that the Auxiliary Support Center is activated.
 - 2.4.2 Provide Health Physics support to teams as directed by Personnel Safety Team Leader.
- 2.5 Dose Assessment Team Leader shall:
 - 2.5.1 Notify the Emergency Director when the Emergency Operations Facility is activated.
 - 2.5.2 Report progress and results of EP-316, Cumulative Population Dose Calculations and off site radiation surveys to the Emergency Director, as necessary.
 - 2.5.3 Notify the Site Emergency Coordinator of the need for assistance from Radiation Management Corporation.
- 2.6 Personnel Safety Team Leader shall:
 - 2.6.1 Report progress and results of onsite radiation survey to the Emergency Director as necessary.
- 2.7 Shift Clerk or other assigned person shall:
 - 2.7.1 If not already done, notify additional support personnel to report to the plant as directed by the Emergency Director. Refer to the appropriate Appendix of EP-209.
 - 2.7.2 Notify Emergency Director or Site Emergency Coordinator when additional support personnel have been notified.
- 2.8 I&C Technicians shall: (if not already performed as per EP-103 or EP-104)
 - 2.8.1 Inform the Emergency Director when centers are activated.
 - 2.8.2 Man the TSC and EOF data display (CCTV) positions as directed by the Emergency Director.
- 2.9 Chemistry Sampling and Analysis Team Leader shall:
 - 2.9.1 Report progress and results of any sampling activities and their results, if appropriate to the Emergency Director.

2.10 Security Team Leader shall:

- 2.10.1 Provide a briefing of the security situation, as required, to the Emergency Director, providing status on the Security Force manning.

2.11 Fire and Damage Team Leader shall:

- 2.11.1 Provide a briefing on fire and damage assessment activities to the Emergency Director, if appropriate.

2.12 Technical Support Team Leader shall:

- 2.12.1 Dispatch available communicators, status board keepers, etc., to support the activities in the various emergency response centers.
- 2.12.2 Provide engineering assessments on the emergency situation, as requested by the Emergency Director.

FINAL CONDITIONS:

- 1.0 Contaminated injured person(s) transported to hospital.
- 2.0 Fire is out, or under control, firewatch has been posted.
- 3.0 All vital areas requiring occupancy are habitable.
- 4.0 Site Security is established.
- 5.0 Plant is in stable condition and core is cooling.
- 6.0 In plant radiation levels are decreasing or are stable.
- 7.0 All engineering safeguards are operable.
- 8.0 Release of radioactive materials is being controlled and no significant uncontrolled releases are contemplated.
- 9.0 All emergency plan implementing procedures are closed out or they have been assigned to an individual for closure.

APPENDICES:

Appendix EP-105-1, General Emergency Notification Message

Appendix EP-105-2, General Emergency Notification Telephone List

Appendix EP-105-3, General Emergency De-escalation Notification Message

Appendix EP-105-4, Emergency Exposure Guidelines

REFERENCES:

PEAPS Emergency Plan

NUREG 0654

EP-101, Classification of Emergencies

GP-15, Local Evacuation

EP-303, Partial Plant Evacuations

EP-305, Site Evacuation

EP-306, Evacuation of Information Center

APPENDIX EP-105-1

GENERAL EMERGENCY NOTIFICATION CHECKOFF LIST

Message: This (is) (is not) a drill. This (is) (is not) a drill. This is Peach Bottom Atomic Power Station calling to report a General Emergency has been declared on Unit No. _____. My name is _____, telephone number is _____. Time and date of General Emergency classification is _____, _____. The basic problem is _____
(24 hr clock) (Date)

There (is presently) (has not been) (is potential for) (has been) a radioactive (airborne) (liquid) release from the plant. The plant status is (stable) (improving) (degrading) (not known). Recommended protective actions are (none) _____.

The affected population area is (none) _____.

This (is) (is not) a drill. This (is) (is not) a drill.

APPENDIX EP-105-2

GENERAL EMERGENCY NOTIFICATION TELEPHONE LISTING

TIME INITIATED: _____

PERSONNEL/AGENCIES TO BE NOTIFIED WITHIN 15 MINUTES	PHONE NUMBERS	TIME	PERSON NOTIFIED/ DISPOSITION
1. EMERGENCY DIRECTOR ALTERNATE:			
2. LOAD DISPATCHER			
3. PENNSYLVANIA EMERGENCY MANAGEMENT AGENCY (PEMA)			
4. MARYLAND EMERGENCY MANAGEMENT & CIVIL DEFENCE AGENCY			
5. YORK COUNTY EMERGENCY MANAGEMENT AGENCY			
6. LANCASTER COUNTY EMERGENCY MANAGEMENT AGENCY			
7. CHESTER COUNTY EMERGENCY MANAGEMENT AGENCY			
8. HARFORD COUNTY DEPARTMENT OF EMERGENCY SERVICES			
9. CECIL COUNTY DEPARTMENT OF EMERGENCY SERVICES			

APPENDIX EP-105-2

GENERAL EMERGENCY NOTIFICATION TELEPHONE LISTING

10. BUREAU OF RADIATION
PROTECTION (BRP)

11. PENNSYLVANIA STATE POLICE
YORK BARRACKS

12. NRC OPERATIONS CENTER
BETHESDA, MD

13. SERGEANT OF THE GUARD

14. MANAGER, PUBLIC INFORMATION
PRIMARY:

ALTERNATE:

15. EMERGENCY PREPAREDNESS
PRIMARY:

ALTERNATE:

NOTIFICATION COMPLETED BY: _____ TIME/DATE: _____
COMMUNICATOR

VERIFIED BY: _____
EMERGENCY DIRECTOR

APPENDIX EP-105-3

GENERAL EMERGENCY DE-ESCALATION NOTIFICATION MESSAGE

THIS (IS) (IS NOT) A DRILL. REPEAT, THIS (IS) (IS NOT) A DRILL. THIS IS
PEACH BOTTOM ATOMIC POWER STATION CALLING TO REPORT A CHANGE IN THE
EMERGENCY ACTION LEVEL. MY NAME IS _____, TELEPHONE
NUMBER _____. THE GENERAL EMERGENCY ON UNIT NO. _____ HAS BEEN
DE-ESCALATED TO (AN UNUSUAL EVENT) (AN ALERT) (AN SITE EMERGENCY) (TERMINATED).
TIME AND DATE IS _____, _____. THE PLANT STATUS IS (STABLE)
(24 hr clock) (Date)
(IMPROVING). THIS (IS) (IS NOT) A DRILL. REPEAT, THIS (IS) (IS NOT) A DRILL.

APPENDIX EP-105-4
EMERGENCY EXPOSURE GUIDELINES

<u>Function</u>	<u>Projected Whole Body Dose</u>	<u>Thyroid Dose</u>	<u>Authorized By</u>
1. Life Saving and Reduction of Injury	75 rem*	375 rem	Emergency** Director
2. Operation of Equipment to Mitigate an Emergency	25 rem*	125 rem	Emergency** Director
3. Protection of Health and Safety of the Public	5 rem	25 rem	Emergency Director
4. Other Emergency Activities	10 CFR 20 limits	10 CFR 20 limits	Emergency Director
5. Re-Entry/Recovery Activities	Administrative Guidelines	Administrative Guidelines	N/A

*Reference: EPA-520/1-75-001 Table 2.1

**Such exposure shall be on a voluntary basis

Simenot.

DATE: 6/26/85

© 2006 The Authors
Journal compilation © 2006 Blackwell Publishing Ltd

PROCEDURE NUMBER

CP 207C

First Aid

© 2004 Blackwell Publishing Ltd, *Journal of Internal Medicine* 255: 103–110

© 2006 The Authors
Journal compilation © 2006 Blackwell Publishing Ltd

© 2006 The Authors
Journal compilation © 2006 Blackwell Publishing Ltd

Copyright © 2006 John Wiley & Sons, Ltd.

Source: *Author's calculations*.

Copyright © 2001 John Wiley & Sons, Ltd.

[Signature]
6-11-85

PHILADELPHIA ELECTRIC COMPANY

PEACH BOTTOM UNITS 2 AND 3

EP-209 TELEPHONE LIST FOR EMERGENCY USE

PURPOSE:

To designate members of the Emergency Teams and to supply pertinent company and non-company emergency support personnel telephone numbers.

PROCEDURE:

The names and telephone numbers listed in the appendices of this procedure are arranged for use in an emergency. Each appendix represents a specific group of personnel. In some cases, a name will appear in more than one appendix. The appendices are:

<u>Appendix No.</u>	<u>Description</u>
A	Immediate Notification Lists
C	Peach Bottom Station Supervision
D1	On Site Emergency Team Leaders
D2	Dose Assessment Team
D3	Fire and Damage Team
D4	Personnel Safety Team
D5	Security Team
D6	Re-Entry Team
D7	Technical Support Center Group
D8	Chemistry Sampling & Analysis Team
E	Corporate Emergency Team Leaders & Support Personnel
F	United States Governmental Agencies
G	Emergency Management Agencies
H	P.E. Company Consultants and Contractors
I1	Field Support Personnel
I2	Rad Services Call List
J	Nearby Public & Industrial Users of Downstream Waters
K	Miscellaneous
L	Local PECO Phones
N	Medical Support Groups
P	60 Minute Call Procedure

INTERIM FIRE AND DAMAGE TEAM LEADERS:

Shift Supervisors: Refer to Alternate Emergency Director

CONTROLLED COPY VALID
ONLY WHEN RED

FIRE AND DAMAGE TEAM:

The Fire and Damage Team consists of the Interim Team Members, the on-shift P.O.'s, APO's, and A.O.'s. The team is augmented by other personnel who are on-site or called in. The augmenting forces are trained in fire fighting but not necessarily in the Emergency Plan. These augmenting forces operate under the direction of the team members and leaders who have had Emergency Plan Training. The augmenting forces are:

1. Staff Engineers and Test Engineers
2. Maintenance personnel
3. Construction personnel
4. Janitors and Storeroom personnel
5. Delta-Cardiff Volunteer Fire Department

Most personnel in Groups 1 through 4 receive PECO fire training; Group 5 personnel are trained in fire fighting by the Delta-Cardiff Volunteer Fire Company.

PERSONNEL SAFETY TEAM:

The Personnel Safety Team is made up of on-shift P.O.'s, A.P.O.'s, and A.O.'s who are trained in the Emergency Plan Procedures. The team is augmented by other site personnel such as Plant Janitors, Test Engineers, Health Physics Technicians, and others who are not necessarily trained in the Emergency Plan but will assist under the direction of the team leaders and members.

SEARCH AND RESCUE GROUP/FIRST AID GROUP:

The Search and Rescue Group is organized by the Personnel Safety Team Leader at the direction of the Emergency Director. It will consist of personnel who are available and who are knowledgeable of the plant layout and recognize conditions which could result from the existing emergency condition. The purpose of this team is to search plant areas quickly to locate and rescue victims. Personnel who know plant layout and are available make up this team are from the following groups:

Shift Operators	Construction
Test Engineers	H.P. Technicians
Staff Engineers	Susquehanna Test Branch
Maintenance	Field Engineers
	Plant Janitors

INTERIM SECURITY TEAM LEADER AND TEAM MEMBERS:

The Security Team is made up of the Guard Force. The Sergeant of the Guard is the Interim Team Leader. The guard force is trained in security and necessary Emergency Plan Procedures.

RE-ENTRY TEAM:

The Re-Entry Team will be made up of available personnel. It is anticipated that personnel with some radiological controls experience or training would be used. Personnel from the following groups are available:

Shift Personnel	HP Technicians
Staff Engineer	Some Maintenance Personnel
Test Engineers	Some Construction Personnel

Specialized training is not required for personnel other than the team leaders.

TECHNICAL SUPPORT CENTER GROUP:

The Technical Support Center Group is organized by the Emergency Director. It consists of various staff, administrative, and consulting personnel who can jointly provide recommendations to the Emergency Director intended to correct and improve emergency conditions.

REVIEW REQUIREMENTS:

1. Changes to this procedure proper shall be in accordance with A-4.
2. Additions, deletions, or changes of names or responsibilities on the appendices shall be PORC approved in accordance with A-4.
3. Corrections by addresses or phone numbers on the appendices may be handled by the secretarial staff without PORC review and approval; however, these appendices must be signed by the superintendent or alternate.

W. Smith
6-11-85

PHILADELPHIA ELECTRIC COMPANY

PEACH BOTTOM UNITS 2 AND 3

EP-209 APPENDIX C - PEACH BOTTOM STATION SUPERVISION

Station Superintendent

Home Phone

Centrex

Assistant Station Superintendent

Engineer - Outage Planning

Engineer - Maintenance

Engineer - Technical

CONTROLLED COPY VAL
ONLY WHEN RED

Engineer - Operations

Senior - HP

Engineer - Administration

Performance Group

Project Group

Security Supervisor

Engineer - I&C

Senior - Chemist

Engineer - Chemistry

Engineer-Health Physics

Quality Engineer

Assistant Maintenance Engineer

Engineer - Reactor

Chemist

Individuals below are not required to be notified during an Alert, Site Emergency, or General Emergency.

Shift Superintendent



W. Smith
6-12-85

PHILADELPHIA ELECTRIC COMPANY

PEACH BOTTOM UNITS 2 & 3

EP-209 APPENDIX D-1 - ON SITE EMERGENCY TEAM LEADERS

Emergency Director

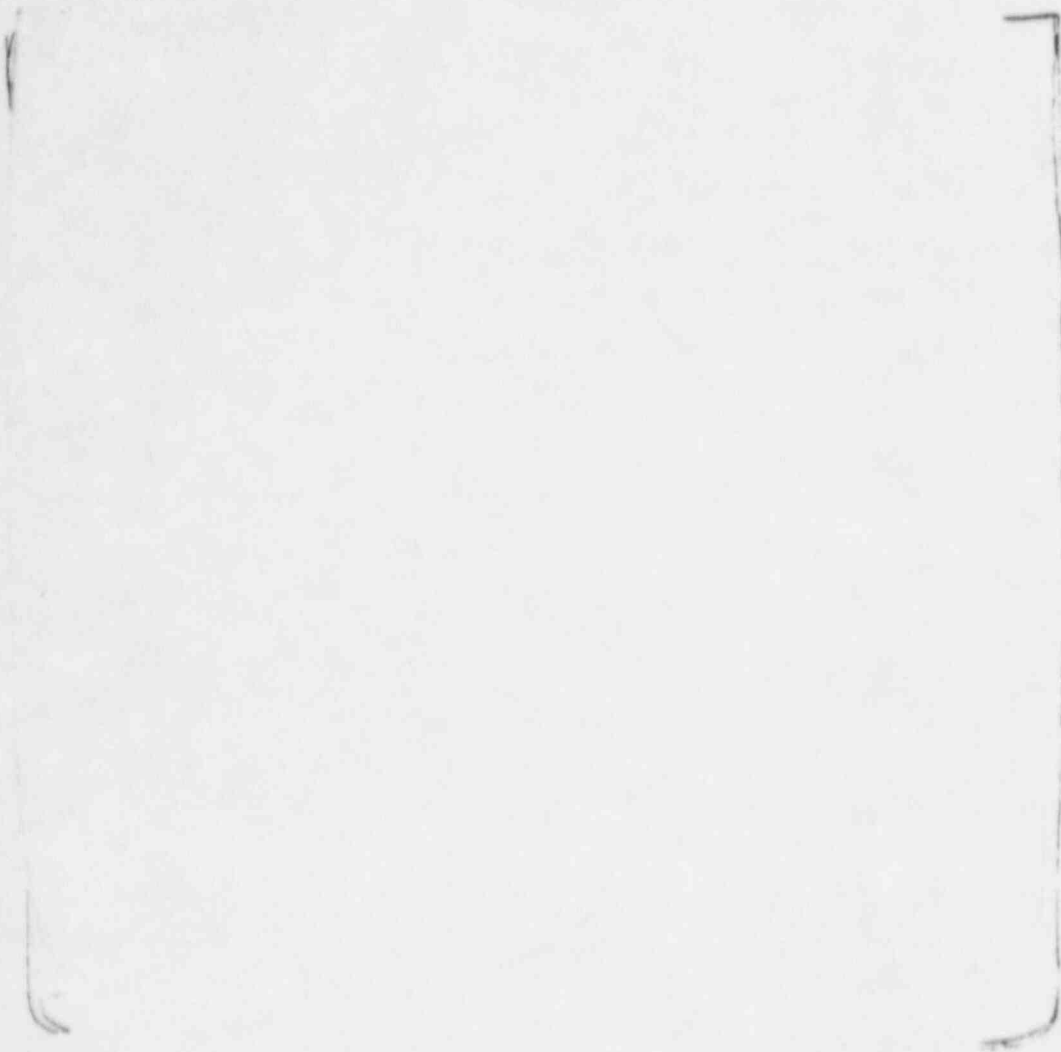
Home Phone

Centrex

PHILADELPHIA ELECTRIC COMPANY

CONTROLLED COPY VALID
ONLY WHEN RED

Alternate Interim Emergency Directors/
Interim Fire and Damage Team Leaders



Handwritten signature
6-10-85

PHILADELPHIA ELECTRIC COMPANY

PEACH BOTTOM UNITS 2 & 3

EP-209 APPENDIX D-3 - FIRE AND DAMAGE TEAM

Fire and Damage Team Leader

Alternate

Fire and Interim Damage Team Members

CONTROLLED COPY VALID
ONLY WHEN RED

Maintenance Personnel - Damage Augmentation Forces

UNCLASSIFIED
CONFIDENTIAL



clb
6-12-85

PHILADELPHIA ELECTRIC COMPANY

PEACH BOTTOM UNITS 2 & 3

EP-209 APPENDIX D-4 PERSONNEL SAFETY TEAM

Personnel Safety Team Leader

Home Phone

Centrex

Alternate Personnel Safety Team Leader

Interim Personnel Safety Team Leader

Onshift Senior Tech. HP

Interim Personnel Safety Team Members

Onshift HP's

Search and Rescue/First Aid Group Leader

Alternate Search and Rescue/First Aid Group Leader

Search and Rescue/First Aid Group Members

(Alternate)

1-244-2635

1-301-272-3419

1-456-5897

CONTROLLED COPY VALID
ONLY WHEN RED

Plant Survey Group Leader

Home Phone

Centrex

Alternate Plant Survey Group Leader

Plant Survey Group Members

For Contractor Plant Survey Group Members See EP-209 APP I-2

Evacuation Assembly Area Group Leader

Home Phone

Centrex

Alternate Evacuation Assembly Group Leader

Evacuation Assembly Area Group Members

Personnel Dosimetry, Bioassay,
Respiratory Protection Group

Home Phone

Centrex

Leaders (*) and Members

Health Physics Data Takers for Personnel
And Dose Assessment Team

Secretaries

Jr. Stenographer

Typist

Handwritten:
6-12-85

PHILADELPHIA ELECTRIC COMPANY

PEACH BOTTOM UNITS 2 & 3

EP-209 APPENDIX D-5 SECURITY TEAM

SECURITY TEAM LEADER

TELEPHONE NO.

ALTERNATES

(Security Team Super.)

(Training Lt.)

Sr. (Asst. Security Team Super.)

(Asst. Training Lt.)

SECURITY TEAM - SERGEANTS

ACCESS CONTROL/BADGING

EQUIPMENT REPAIR COORDINATOR

CLERK

CORPORALS

**CONTROLLED COPY VAI
ONLY WHEN RED**

SECURITY TEAM MEMBERS- GUARDS

- 1.
- 2.
- 3.
- 4.
- 5.
- 6.
- 7.
- 8.
- 9.
- 10.
- 11.
- 12.
- 13.
- 14.
- 15.
- 16.
- 17.
- 18.
- 19.
- 20.
- 21.
- 22.
- 23.
- 24.

SECURITY TEAM MEMBERS - WATCHPERSONS

TELEPHONE NO.

28.

29.

30.

31.

32.

33.

34.

35.

36.

37.

** 38.

** 39.

40.

41.

42.

43.

44.

** 45.

46.

47.

48.

49.

50.

51.

52.

53.

54.

55.

56.

57.

58.

* Lethal Weapons trained

** CAS/SAS trained

[Handwritten signature]

SECONDARY ALARM ST. & CONTROL ALARM

ATTENDANTS

TELEPHONE NO.

- 1.
- 2.
- 3.
- 4.
- 5.
- 6.
- 7.
- 8.
- 9.
- 10.
- 11.
- 12.

PART-TIME SECURITY TEAM MEMBERS - GUARDS

TELEPHONE NO.

- 1.
- 2.
- 3.
- 4.

PART-TIME SECURITY TEAM MEMBERS - WATCHPERSONS

TELEPHONE NO.

- 1.
- 2.
- 3.
- 4.

BURNS INTERNATIONAL SECURITY SERVICES, INC.

BURNS DISTRICT MANAGER - ALLENTOWN

PERSONNEL ADMINISTRATOR

Handwritten:
6-12-85

EP-209 APPENDIX D-7 TECHNICAL SUPPORT CENTER GROUP

Emergency Director

Home

Centrex

Alternate

Technical Engineer

Alternates

Supervising Engineers & Alternates

Outage Planning Engineer

Alternate:

Administration Engineer

Performance Group

Alternate: J. Jordan

I & C Engineer

Alternate:

CI

UNCLASSIFIED

Project Group:

Reactor Engineer

Alternate:

Senior Chemist

Alternate:

Quality Assurance Engineer

Alternate:

Maintenance Engineer ***

Alternate:

Senior Health Physicist ***

Alternate:

Applied Health Physicist ***

Alternate:

Record Keeper and Communicator

See EP-209 Appendix I-1 for personnel to fill this position.

Data Display Operators - 2 required

Notify one of the five persons in the order listed below. The person notified will contact two Data Display Operators.

- 1.
- 2.
- 3.
- 4.
- 5.

*** Required to report to the EOF when activated.

Secretaries
2 required

Home

Centrex

W. Smith
6-12-85

PHILADELPHIA ELECTRIC COMPANY

PEACH BOTTOM UNITS 2 & 3

EP-209 APPENDIX D-8 CHEMISTRY SAMPLING & ANALYSIS TEAM

Chemistry Sampling & Analysis Team Leader Home Phone Centrex

Alternate Chemistry Sampling & Analysis Team Leader

Chemistry Sampling & Analysis Team Members

Supplemental Forces are available from Rad Services Inc. Appendix I-7

CONTROLLED COPY VALID
ONLY WHEN RED

6-12-85

EP-209 APPENDIX E - CORPORATE EMERGENCY TEAM LEADERS AND SUPPORT PERSONNEL

Home Phone

Centrex

Site Emergency Coordinator

Supt., Nuclear Generation

Site Emergency Coordinator Alternate

Supt. Nuclear Services

Site Emergency Coordinator Alternate

Supt. Limerick

HP&C Coordinator

Director, Rad. Prot. Sect.

HP&C Coordinator Alternate

Physicist, Rad. Prot. Sect.

Environmental Sampling Coordinator

Supv. Eng. Env. Branch

Environmental Sampling Coordinator Alternate

Sr. Eng. Environmental Branch

CONTROLLED COPY VALID
ONLY WHEN RED

Planning & Scheduling Coordinator

Outage Planning Coordinator

Procedure Support Coordinator

Senior Engineer, Licensing

Procedure Support Coordinator Alternate

Maintenance Engineer, Limerick

Emergency Support Officer/Recovery Office

V.P. Electric Production

Emergency Support Officer/Recovery Officer Alt

Mgr. Generation Nuclear

Emergency Medical Director

Medical Director

Emergency Medical Director Alternate

Med. Disp. Physician

Emergency Security Officer

Manager, Claims-Security

Emergency Security Officer Alternate

Director, Security

Insurance Coordinator

Manager Insurance Division

Insurance Coordinator Alternate

Insurance Administrator

Core Physics Coordinator

Eng-in-charge Fuel Mgmt.

Core Physics Coordinator Alternate

Eng. Fuel Mgmt.

Administrative and Logistics Manager

Director, Corporate Analysis

Administrative and Logistics Manager Alt.

Manager, Rate Division

Administrative and Logistics Manager Alt.

Manager, T&D Services

Support Personnel Procurement Coordinator

Eng. in Charge, Licensing Section

Support Personnel Procurement Coordinator Alt.

Engineer, Licensing Section

Support Personnel Accommodations Coordinator

Mgr. Area Development

Support Personnel Accommodations Coord. Alt.

supt., Sales Analysis

Support Personnel Accommodations Coord. Alt.

Staff Asst. Business Services

Western Division - Accommodations

supv., Business Services

Western Division - Accommodations Alt.

Bus. Services Rep.

Purchasing Coordinator

Mgr., Purchasing

DDDD

Purchasing Coordinator Alternates

Supervising Buyer

Transportation Coordinator

Gen. Supt. Trans. Div.

Transportation Coordinator Alternate

Supt. Operations

Communication Equipment Coordinator

Gen. Supt. Office Systems and Communication

Communication Equipment Coordinator Alt.

Supt. Office Systems and Communication

Stores Division Coordinator

Gen. Supt. Stores Division

Stores Division Coordinator Alternate

Supt. Stores Division

T & D Support Coordinator

Mgr. T&D Operations

T & D Support Coordinator Alt.

Asst. to V.P. T&D

Design and Construction Support Officer

Chief Mech. Eng.

Design and Construction Support Officer Alt.

Chief Elec. Eng.

QA/QC Coordinator

Supt. Q/A Division Electric Production.

QA/QC Coordinator Alternate

Director, QA Division, E & R

Radwaste Coordinator

Eng. in Charge Power Plant Services Section

Radwaste Coordinator Alternate

Supv. Eng. Power Plant Services

Engineering Design Coordinator

Chief Design Engineer

Engineering Design Coordinator Alt.

Asst. Chief Design Engineer

I&C Coordinator

Supv. Eng. Power Plant Control Systems Branch
Engineer-in-Charge Control Eng. Section

I&C Coordinator Alt.

Supv. Eng. Nuclear Control Branch

Licensing Coordinator

Eng. in Charge Nuclear & Env. Section

Licensing Coordinator Alternate

Supv. Engineer Nuclear Branch

Systems Engineering - Mechanical Coordinator

Eng. in Charge, Power Plant Design

Systems Engineering - Mechanical Coordinator alt.

supv. Eng. Nuclear Steam Supply Branch

Systems Engineering - Electrical Coordinator

Eng. in Charge, Station Eng. Section

7

Public Information Officer

V.P. Corporate Communications

Public Information Officer Alt.

Manager Corporate Comm.

Muddy Run News Center Coordinator

Mgr. Corp. Communication

Muddy Run News Center Coordinator Alt.

Mgr. Public Information

EOF Liaison

Asst. Mgr. Energy Information &
Education

EOF Liaison Alt.

Sr. Energy Information Rep.
Limerick Information Center

Corporate News Media Coordinator

Mgr. Editorial Services

Corporate News Media Coordinator Alt.

Dir. Employee Info.

PROP

Systems Engineering - Electrical Coord. Alt.

Supv. Eng., Nuc.-Gen. Branch

Construction Coordinator

Gen. Supt. Construction Division

Construction Coordinator Alternate

Asst. Gen. Supt. Construction Division

Maintenance Coordinator

Gen. Supt., Maintenance Division

Maintenance Coordinator Alternate

Supt. Mechanical Maintenance

Federal and State Government Liaison

Sr. V.P. Nuclear

Federal and State Government Liaison Alt

V.P. Corporate Communications

Company Spokesman

V.P. Eng. Research

Manager, Eng. & Research

Technical Advisor (to Muddy Run News Center)

Sr. Eng. Nuc. Sect. Gen. Div.

Technical Advisor (to Muddy Run News Center) A'

Eng in charge, Nuclear Safety
Section

Ventilation Coordinator

Eng. in charge, Industrial Section

Ventilation Coordinator Alternate

Supv. Eng., Building Facilities Branch.

Civil Engineering Coordinator

Engr. in charge, Civil Section

Civil Engineering Coordinator Alternate

supv. Eng. Structural Branch

Emergency Planning Coordinator Alternate

Emergency Preparedness Section

Emergency Planning Coordinator

P.B. Emergency Preparedness Coordinator

EDF Mechanical Engineer Liason

EDF Electrical Engineer Liason

glnath
6-12-85

EP-209 APPENDIX G - EMERGENCY MANAGEMENT AGENCIES

Address

Phone

1. State Emergency Management Agencies

a. Pennsylvania Emergency Management Agency

b. Delaware Civil Defense Agency

c. New Jersey Office of Emergency Management
N.J. State Police
Division Headquarters

d. Maryland Emergency Management and Civil Defense Agency

e. County Emergency Management Agencies

a. Lancaster County

b. York County

c. Chester County

.. 1120

d. Harford County

Harford County
Emergency Management
& Civil Defence

e. Cecil County

Cecil County
Emergency Management

Handwritten signature
6-12-85

EP-209 APPENDIX H COMPANY CONSULTANTS

Phone

1. General Electric Company
General Electric Emergency
Support Program
2. Southwest Research Institute
3. VIP, International

4. Radiation Management Corp

5. Burns Detective Agency

6. Burns Detective Agency

6. Institute of Nuclear
Power Operations (INPO)

CONTROLLED COPY
ONLY WHEN RED

7. Bechtel Power Corporation
8. Babcock and Wilcox
9. Pooled Inventory Management (PIMS) (Southern Electric International)

NOTE: Only the following persons are authorized to contact PIMS:

Electric Production

or

Electric Production

Contact through Administrative and Logistics Manager.

~~PROPRIETARY~~

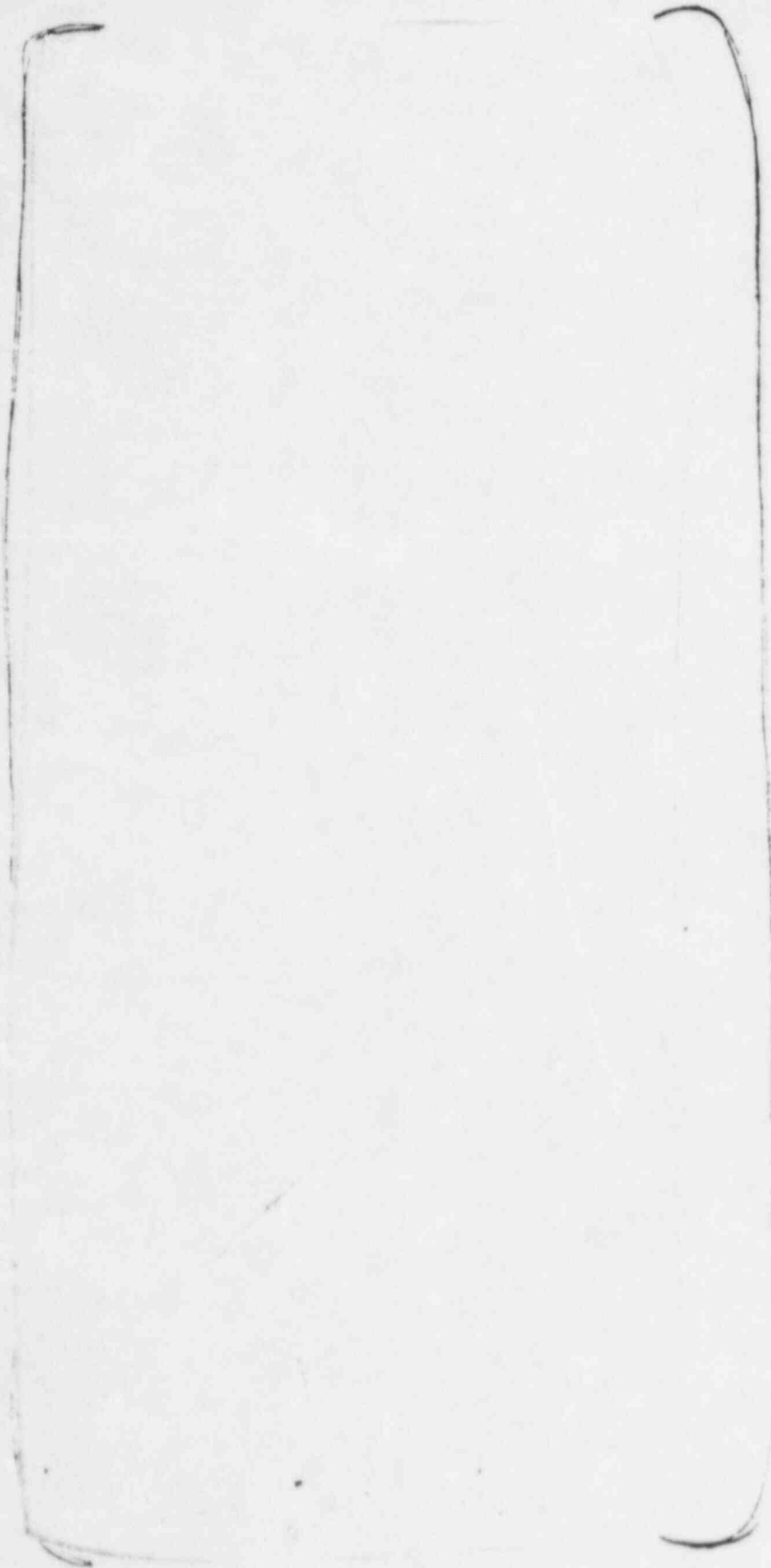
[Handwritten Signature]
6-14-85

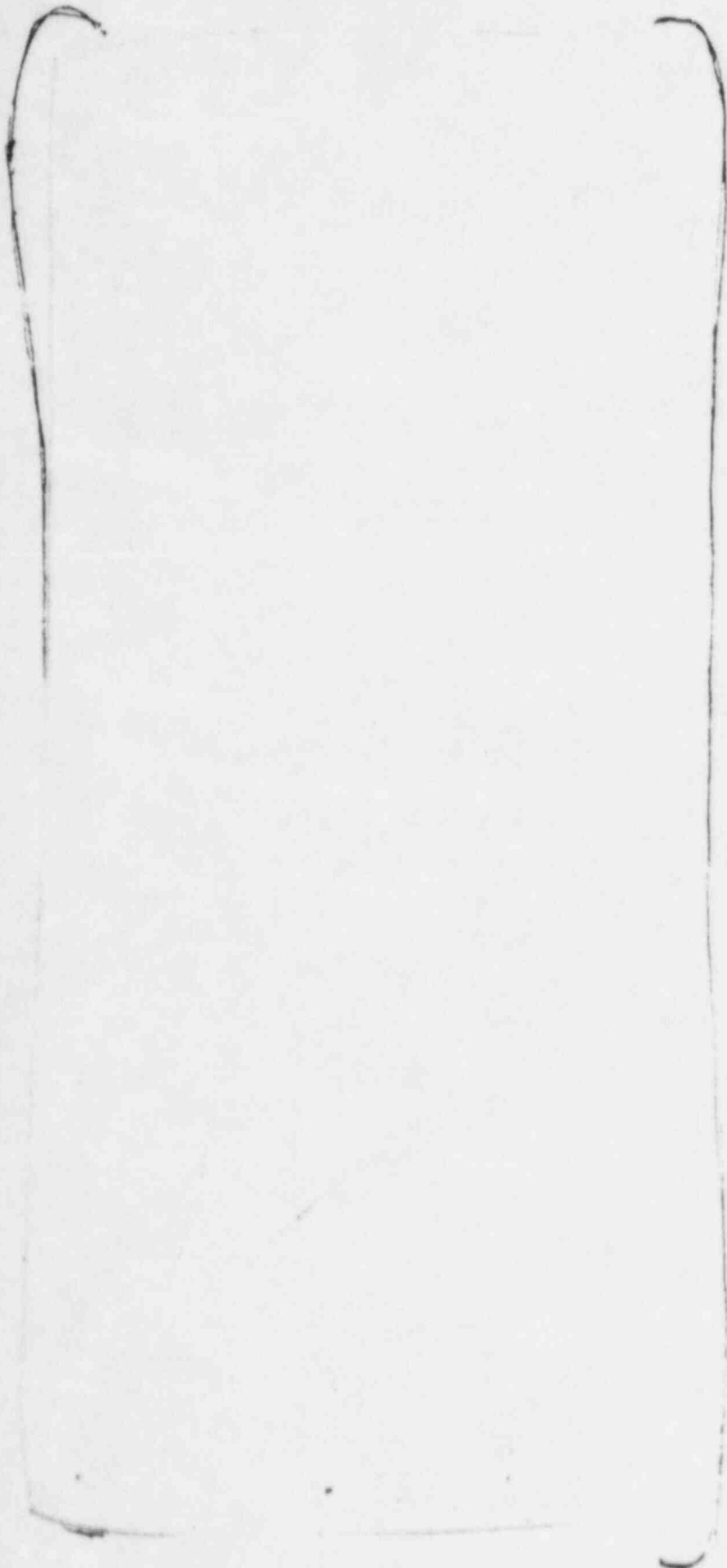
EP-209 APPENDIX I-1 FIELD SUPPORT PERSONNEL

Phone

1
2
3
4
5
6
7
8
9
10
11
12
13
14
15
16
17
18
19
20
21
22
23
24
25
26
27
28
29
30
31
32
33
34
35
36
37
38
39
40
41
42
43
44
45
46
47
48
49
50
51
52
53
54
55
56
57
58
59
60
61
62
63
64
65
66
67
68
69
70
71
72
73
74
75
76
77
78
79
80
81
82
83
84
85
86
87
88
89
90
91
92
93
94
95
96
97
98
99
100

FIELD COP. VALID
ONLY WHEN RED





6-14-85

EP-209 APPENDIX N - MEDICAL SUPPORT GROUPS

Local Physicians & Addresses

Office Phone

Home Phone

1st choice:

2nd choice:

Harford Memorial Hospital

501 South Union Avenue
Havre de Grace, MD 21078

Ambulance

Preferred No.

Alternate

Harford Civil Defense Agency

Delta-Cardiff Fire Company

Business No.

Harford Co. Fire Control
Headquarters

York County Control

Medical Director

Home Phone

Centrex

CONTROLLED COPY VALID
ONLY WHEN RED

Alternate

Pager

At the tone, dial
the number you want
him to call (touch
tone phone only)

Director - Radiation Protection Section

Radiation Management Corporation

Preferred

Alternate

- * If no one is at R.M.C. (Radiation Management Corporation) or if this number is called after 5:00 PM, a taped message will be heard. This message will instruct the caller to leave his message or to call the "after 5:00 PM" number.
- ** This number is located in the PECO load dispatcher office. Ask L.D. supervisor to contact R.M.C. and have them contact you at your number.

Handwritten signature
6-12-85

PHILADELPHIA ELECTRIC COMPANY
PEACH BOTTOM UNITS 2 AND 3
EMERGENCY PLAN IMPLEMENTING PROCEDURE

EP-209 APPENDIX P - STAFFING AUGMENTATION - 60 MINUTE CALL PROCEDURE

PURPOSE:

This appendix provides the method of contacting key staff personnel who will, in-turn, notify sufficient support personnel to meet the one-hour staffing requirement. It is used if an Emergency Plan Alert, Site Emergency, or General Emergency is declared.

1. The following steps shall be performed, in sequence, by the Shift Clerk or other assigned personnel.

2. Inform each person contacted of the event classification and that 60 minute staffing is required.

Call pager number if the phone is busy, if there is no answer, or if you know that the individual is "on-the-pager". Individuals may, of course, supply temporary numbers which should be called first.

Contact two staff senior engineers. Do not call if the Communicator and counts as one contact. Attempt to contact the "Duty" and "Interim Site Coord." engineers first. If you are unsuccessful, continue to call or page personnel on the list until you contact two individuals who can be at the site in less than 60 minutes.

<u>Name</u>	<u>Phone</u>	<u>Time Called</u>	<u>Disposition</u> <u>No Ans.-Busy-Contacted</u>	<u>Called By</u>
-------------	--------------	--------------------	---	------------------

BY VALID
RED

5. Contact one of the representatives from the Personnel Safety Team listed below and request the call-in of required Personnel Safety Team members. Make the calls in the listed order unless individuals are known not to be available.

<u>Name</u>	<u>Phone</u>	<u>Time Called</u>	<u>Disposition</u> <u>No. Ans.-Busy-Contacted</u>	<u>Called</u> <u>By</u>
-------------	--------------	--------------------	--	----------------------------

6. Contact one of the representative from the Dose Assessment Team listed below and request the call-in of required HP, TAs and Technicians. Make the calls in the listed order unless individuals are known not to be available. This step may be omitted if was contacted in Step 4.

<u>Name</u>	<u>Phone</u>	<u>Time Called</u>	<u>Disposition</u> <u>No Ans.-Busy-Contacted</u>	<u>Called</u> <u>By</u>
-------------	--------------	--------------------	---	----------------------------

7. Contact one of the representatives from the Chemistry Sampling and Analysis Team listed below and request the call-in of required Chemistry TAs and Technicians. Make the calls in the listed order unless individuals are known not to be available. This step may be omitted if was contacted in Step 4.

8. Contact the on-shift Maintenance Sub-Foreman via phone _____ or plant page system and request a call-in of two maintenance mechanics (preferably one electrician and one fitter or machinist) from their own support personnel call list.

Maintenance Sub-Foreman _____

Time Contacted _____ by _____

9. Contact the on-shift I&C technician via plant phone _____ or plant paging system and request a call-in of two additional I&C Technicians from their own support personnel call list.

I&C Technician contacted _____

Time Contacted _____ By _____

10. Contact one of the representative of the Engineering Support Group below and request the call-in of required Engineers and TAs call in the listed order unless individuals are known not to be available. This step may be omitted if _____ was contacted in Step 4.

<u>Name</u>	<u>Phone</u>	<u>Time Called</u>	<u>Disposition</u> <u>No Ans.-Busy-Contacted</u>	<u>Called</u> <u>By</u>
-------------	--------------	--------------------	---	----------------------------

11. Contact one PO or APO on list provided by SS/SSV and call-in for work as Radwaste Operator. (If the person is contacted, he is required to come to plant). This step may be waived by Shift Supervision if an extra PO or APO for Radwaste is already on shift.

PO or APO Contacted _____ Est Arrival Time _____

Time Contacted _____ by _____

12. At the discretion of the Shift Superintendent, call in a Shift Supervisor to act as OSC Coordinator. Use EP-209 APP. C for phone numbers.

Supervisor Contacted _____ Estimated Arrival Time _____

Time Contacted _____ Contacted By _____

13. Contact the Radwaste Supervisor or the Electrical Supervisor, as required, at the discretion of the Shift Superintendent for help in responding to the plant condition.

<u>Name</u>	<u>Phone</u>	<u>Time Called</u>	<u>Disposition No. Ans.-Busy-Contacted</u>	<u>Called By</u>
-------------	--------------	------------------------	--	----------------------

14. Attempt to contact all other senior engineers listed in Step 4. Document in Step 4.

15. Notify Interim Emergency Director (Shift Superintendent) when notifications are complete and inform him of any discrepancies.

Notified _____ at _____

Discrepancies _____

File Sys 3-1



JUN 28 1985

PHILADELPHIA ELECTRIC COMPANY
PEACH BOTTOM UNITS 2 AND 3
EMERGENCY PLAN IMPLEMENTING PROCEDUREEP-211 EMERGENCY RADIATION EXPOSURE GUIDELINES AND CONTROLSPURPOSE:

The purpose of this procedure is to provide guidelines and administrative controls for radiation exposures in excess of 10CFR20 limits during activities involving: life saving and/or reduction of injury, and operation or maintenance of equipment to mitigate an emergency.

This procedure applies in cases where exposure is intended to exceed 1.25 Rem per quarter or 3.00 Rem per quarter or 5 Rem per year. Emergency exposures in excess of 10CFR20 limits (refer to Appendix EP-211-2) are not dependent on whether an NRC Form 4 has been executed.

RESPONSIBILITIES:

- 1.0 The Emergency Director shall ensure that the actions outlined in this procedure are carried out.
- 1.1 The Personnel Safety Team Leader shall ensure that follow-up items are carried out.
- 1.2 The PECO Medical Director will provide guidance and ensure that his actions outlined in this procedure are carried out.

ACTION LEVELS:

- 1.0 Emergency response actions to perform life saving or accident mitigating functions are expected to result in radiation exposures in excess of 10CFR20 limits, see Appendix EP-211-2. Emergency Exposure Guidelines.
- 1.1 Every attempt shall be made to maintain exposures As Low As is Reasonably Achievable (ALARA).

PROCEDURE:1.0 IMMEDIATE ACTIONS:

- 1.1 The Emergency Director shall:
 - 1.1.1 Determine the need to perform specific tasks anticipated to result in exposures exceeding station administrative guidelines by evaluating the potential consequences resulting from not performing the tasks against the anticipated exposure.

CONTROLLED COPY VALID
ONLY WHEN RED

- 1.1.2 Follow the guidelines for emergency exposure listed in Appendix EP-211-2, Emergency Exposure Guidelines.
- 1.1.3 Verify that the personnel assigned to perform the task:
 - a. are aware of the potential biological effects associated with the requested emergency exposure, (see Appendix EP-211-4),
 - b. should not be (a) fertile female(s),
 - c. have not previously received an emergency exposure,
 - d. have been briefed of the situation, are volunteers, and
 - e. are technically qualified to perform the assigned task.

NOTE

INSTRUCTIONS ASSOCIATED WITH STEPS 1.1.4 THRU 1.1.6 MAY BE DELEGATED BY THE EMERGENCY DIRECTOR, HOWEVER, ONLY THE EMERGENCY DIRECTOR CAN SIGN AUTHORIZATION CONTAINED IN STEP 9 OF SECTION A OF ATTACHMENT EP-211-1, EMERGENCY EXPOSURE AUTHORIZATION FORM. HE SHALL APPLY APPENDIX EP-211-2, EMERGENCY EXPOSURE GUIDELINES, IN MAKING HIS DECISION

- 1.1.4 Instruct personnel not to enter any area where dose rates are unknown and unmeasurable with dose rate instruments.
- 1.1.5 Ensure that all reasonable precautions for minimizing the radiological consequences of the emergency action are taken, (i.e., protective clothing, respiratory protection, thyroid blocking agents, etc.).
- 1.1.6 Complete Section A of Attachment EP-211-1, Emergency Exposure Authorization Form.
- 1.2 The individual to receive the emergency exposure authorization shall complete Section B of Attachment EP-211-1.
- 1.3 The Personnel Safety Team Leader shall complete

Sections C and D of Attachment EP-211-1.

NOTE

ALTHOUGH IT IS PREFERABLE TO PERFORM AND DOCUMENT THESE STEPS PRIOR TO THE EXPOSURE, THE EMERGENCY DIRECTOR MAY VERBALLY AUTHORIZE THE EXPOSURE AND COMPLETE THE DOCUMENTATION AT A LATER TIME.

2.0 FOLLOW-UP ACTIONS:

2.1 The Personnel Safety Team Leader shall:

- 2.2.2 Ensure that the exposure incident is brought to the attention of PECO Medical Director and the Health Physics and Chemistry Coordinator.
- 2.1.2 Implement the direction of PECO Medical Director regarding subsequent medical examinations.
- 2.1.3 Ensure that the exposure evaluation and a full report on the emergency exposure, including the necessary reports in accordance with 10CFR20.403 are completed.
- 2.1.4 Ensure that emergency exposure data are provided for incorporation into the individual's exposure record.
- 2.1.5 Ensure that appropriate supervisory personnel are aware of the routine exposure restrictions for these individuals, for current and subsequent quarters.
- 2.1.6 Ensure that all sections of EP-211-1, (Emergency Exposure Authorization Form), have been completed, and reports prepared in accordance with 10CFR20.403 have been completed forwarded to Nuclear Generation Division, Nuclear Services, Engineer-In-Charge, Licensing, for submittal to NRC.

2.2 The Medical Director shall:

- 2.2.1 Review radiation exposure data with the Personnel Safety Team Leader or the Health Physics and Chemistry Coordinator.
- 2.2.2 Provide advice concerning the need for

medical evaluation or expert consultation.

APPENDICES:

- EP-211-1, Emergency Exposure Authorization Form
- EP-211-2, Emergency Exposure Guidelines
- EP-211-3, Criteria For Medical Evaluation Re:
Emergency Exposure
- EP-211-4, Potential Biological Effects Associated
with Emergency Exposure Guidelines

REFERENCES:

- FBAPS Emergency Plan
- 10CFR20.403 Notification of Incidents
- EPA 520/2-75-001 Table 2.1
- BEIR III

ATTACHMENT EP-211-1

EMERGENCY EXPOSURE AUTHORIZATION FORMSection A

1. Name (to receive exposure): _____
 2. Soc. Sec. No: _____ 3. Sex _____ 4. Age _____
 5. Individual TLD Number: _____
Employer/Work Group: _____ / _____
 6. Task(s) to be Performed: _____

 7. Date of Authorization: _____ Authorized Limit: _____ Rem _____
 8. Conditions:
Individual is a volunteer
Individual is familiar with radiological consequences of exposure.
Fertile females should not take part.
Individual has not received an emergency exposure before.
- Basis for Authorization:
- Life Saving Action _____
Mitigating Action _____
9. Emergency Director: _____ (Signature)

SECTION B

I have been briefed in the radiological consequences of the proposed emergency exposure, and I have volunteered to perform the emergency measures during which I will receive the emergency exposure.

1. Signature: _____ Date: _____

ATTACHMENT EP-211-1 (CONTINUED)

EMERGENCY EXPOSURE AUTHORIZATION FORMSECTION C (Attached exposure evaluation)

1. Dose equivalent assigned for entry: _____

2. TLD/Dosimeter Results: _____

3. Bioassay Results: _____

4. Medical Evaluation/Action: _____

- Doctor: _____
5. Personnel Safety Team Leader: _____ Date _____

SECTION D

1. Disposition (Allow additional exposure, restricted access, etc.): _____

2. Individual assigned to follow up report(s): _____
3. Personnel Safety Team Leader: _____ Date: _____

APPENDIX EP-211-2

EMERGENCY EXPOSURE GUIDELINES

<u>Function</u>	<u>Projected Whole Body Dose</u>	<u>Thyroid Dose</u>	<u>Authorized By</u>
1. Life Saving and Reduction of Injury	75 rem*	375 rem	Emergency** Director
2. Operation of Equipment to mitigate an Emergency	25 rem*	125 rem*	Emergency** Director
3. Protection of Health and Safety of the Public	5 rem	25 rem	Emergency Director

*Reference: EPA-520/2/75-001 Table 2.1

**Such exposure shall be on a voluntary basis.

APPENDIX EP-211-3
CRITERIA FOR MEDICAL EVALUATION
Re: EMERGENCY EXPOSURE

The following criteria should be applied as a minimum to any individual potentially exposed to excessive radiation levels:

1. 10 Rem whole body
2. 30 Rem thyroid
3. 60 Rem skin
4. 150 Rem extremity
5. internal deposition equivalent to one organ burden

The details of the exposure incident shall be brought to the attention of the Company Medical Director. He shall determine the need, extent, and nature of any clinical, biological, or biochemical examinations, or the need for expert consultation.

APPENDIX EP-211-4

POTENTIAL BIOLOGICAL EFFECTS ASSOCIATED WITH EMERGENCY
EXPOSURE GUIDELINES

<u>Projected Whole Body Dose</u>	<u>Biological Effects Summary</u>	<u>Long Term Risks</u>
5.0 Rem	No Detectable ill effects	0.135% (or 13.5 additional cases) in 10,000 of contacting cancer. (See Note 1)
25 Rem	(See Note 2) Slight transient reduction in white blood cells.	0.75% (or 75 additional cases) in 10,000 of con- tacting cancer. (See Note 1)
75 Rem	May experience one or more of the following: nausea, anorexia vomiting fatigue	2.25% (or 225 additional cases) in 10,000 of con- tacting cancer. (See Note 1)

Note 1: The normal incidence of cancer is approximately 2500 in 10,000 (or 25%). The long term risks indicate potential increases above the normal incidence, if 10,000 people received the projected whole body dose.

Note 2: The acute effects are similar over the range from 25 Rem to 75 Rem, but are more likely to be experienced as exposures increase.

ASF

PHILADELPHIA ELECTRIC COMPANY
PEACH BOTTOM UNITS 2 AND 3
EMERGENCY PLAN IMPLEMENTING PROCEDURE

JUN 28 1985

EP-311 CONTAMINATED INJURY

PURPOSE:

To define the necessary actions required to expedite emergency medical treatment and if required, decontamination efforts to reduce contamination to an acceptable level.

RESPONSIBILITIES:

- 1.0 The Shift Superintendent, or his designated alternate will assume the duties of the Emergency Director, until relieved by the Station Superintendent.
- 2.0 The Emergency Director shall ensure that the following personnel and agencies are notified, if they are required to provide assistance. See Appendix EP-311-2, Medical Support Group Phone List.

- 2.1 Claims-Security
- 2.2 PECO Medical Director
- 2.3 Sergeant of the Guard
- 2.4 Ambulance
- 2.5 Hospital

- 3.0 The Claims-Security personnel shall provide the notification to the injured person's family.

ACTION LEVELS

- 1.0 Person(s) injured with possible contamination is classified as an Unusual Event per EP-101, Classification of Emergencies.
- 2.0 Personnel that are not contaminated, but are injured will not be reported under the provisions of this procedure, but will be provided the necessary emergency medical treatment and if required, transported to the hospital. Reporting of the injury, will be handled as an industrial workmens compensation injury or accident.

PRECAUTIONS:

- 1.0 Primary concern is providing the injured person(s) with emergency medical treatment.
- 2.0 Secondary concern is the removal of contamination.

CONTROLLED COPY VALID
ONLY WHEN RED

3.0 HPO/CO-7, Personnel Decontamination, is the procedure to be followed for decontamination.

PROCEDURE:

1.0 IMMEDIATE ACTIONS

1.1 Emergency Director shall:

- 1.1.1 Upon receipt of information concerning an accident on site involving an injured person(s) make the following Public Address announcement to dispatch the First Aid Group:

MESSAGE

THIS (IS) (IS NOT) A DRILL, REPEAT, THIS (IS) (IS NOT) A DRILL. ATTENTION ALL PERSONNEL. ATTENTION ALL PERSONNEL. MEMBERS OF THE FIRST AID GROUP SHALL REPORT TO _____.

Designate Accident/Injury Location

ALL OTHER PERSONNEL STAND CLEAR OF THIS LOCATION.

THIS (IS) (IS NOT) A DRILL, REPEAT, THIS (IS) (IS NOT) A DRILL.

- 1.1.2 Notify the First Aid Facility (ext. _____) on the available details of the emergency and the location. This facility functions on dayshift, Monday thru Friday.
- 1.1.3 Based on information transmitted from the accident scene as provided by First Aid Group Leader, determine if hospitalization is required, if the injured victim is contaminated, etc.
- 1.1.4 Notify the Load Dispatcher to contact the following personnel and provide them with the information contained in Appendix EP-311-1, First Aid/Search & Rescue Group Injury Report Form:
- a. Claims-Security
 - b. PECO Medical Director
- 1.1.5 If the decision is made to transport the victim to hospital, use Appendix EP-311-1, First Aid/Search & Rescue Group Injury Report Form, to notify the following offsite assistance agencies:

- a. Harford Memorial Hospital
 - b. Delta-Cardiff Ambulance
 - c. Radiation Management Corp.
- 1.1.6 Direct the Shift Clerk to call the Sergeant of the Guard to alert them of the arrival of the ambulance.
 - 1.1.7 If hospitalization is not necessary and the First Aid Facility is not in operation, request one of the physicians shown on Appendix EP-311-2, Medical Support Group Phone List, to standby to treat the injured individual or come to the station to treat the injured victim.
 - 1.1.8 If ambulance is not available or not required to transport the injured to the local physician, private transportation or company vehicle shall be used to transport to receive medical treatment.
 - 1.1.9 Decontamination, if required will be performed in accordance HP/CO-7, Personnel Decontamination.
 - 1.1.10 First Aid Group Leader will keep the Control Room updated in regards to the victims condition.

2.0 FOLLOW-UP ACTIONS:

2.1 The Emergency Director shall:

- 2.1.1 Provide updated accident details and injury status as required, to the following agencies and personnel.
 - a. Claims-Security
 - b. PECO Medical Director
 - c. Station Superintendent
 - d. PBAPS Safety Coordinator

FINAL CONDITIONS:

When the contaminated injured person(s) arrive at the hospital or receive emergency medical attention, the Unusual Event shall be determined and offsite agencies will be notified of this action. Use Appendix EP-102-3, Unusual Event De-Escalation Message for the notification of offsite agencies and the NRC.

APPENDICES:

Appendix EP-311-1, First Aid/Search & Rescue Group Injury Report Form

Appendix EP-311-2, Medical Support Group Phone List

REFERENCES:

PBAPS Emergency Plan, Section 5.2.1.5.7, Personnel Safety Team,
and Section 5.2.1.5.7.1, First Aid/Search & Rescue Group.

NUREG 0654

EP-207, Personnel Safety Team Activation

EP-207A, Search And Rescue/First Aid Group

EP-211, Emergency Radiation Exposure Guidelines and Controls

HP/CO-7, Personnel Decontamination

EMERGENCY PLAN PROCEDURES INDEX

PEACH BOTTOM UNITS 2 AND 3

 EP Index
 Page 1
 Rev. 51 *
 07/01/85 *

<u>Number</u>	<u>Title</u>	<u>Review Date</u>	<u>Rev. No.</u>	<u>Revision Date</u>
EP-101	Classification of Emergencies	06/24/85	12	06/24/85 *
EP-102	Unusual Event Response	06/26/85	10	06/26/85 *
EP-103	Alert Response	06/26/85	11	06/26/85 *
EP-104	Site Emergency Response	06/14/85	11	06/14/85 *
EP-105	General Emergency Response	06/14/85	11	06/14/85 *
EP-110	Personnel Assembly and Accountability	06/20/83	1	06/20/83
EP-201	Technical Support Center (TSC) Activation	10/12/84	7	10/12/84
EP-202	Operations Support Center (OSC) Activation	01/23/85	7	01/23/85
EP-203	Emergency Operations Facility (EOF) Activation	10/12/84	7	10/12/84
EP-203A	Alternate Emergency Operations Facility (EOF) Activation	10/12/84	0	10/12/84
EP-205	D E L E T E D	09/12/84		
EP-205A	Chemistry Sampling and Analysis Group	09/18/84	5	09/18/84
EP-205A .1	Operation of Post Accident Sampling Station	09/20/84	5	09/20/84
EP-205A .2	Obtaining Drywell Gas Samples from Containment Atmosphere Dilution Cabinets	05/26/82	0	05/26/82
EP-205A .3	Retrieving and Changing Sample Filters and Cartridges from the Drywell Radiation Monitor During Emergencies	04/25/83	1	04/25/83
EP-205A .4	Obtaining Drywell Gas Samples from the Drywell Radiation Monitor Sampling Station	05/25/82	0	05/25/82
EP-205A .5	Obtaining Reactor Water Samples from Sample Sinks Following Accident Conditions	05/25/82	0	05/25/82
EP-205A	Obtaining Canal Discharge Water			

 CONTROLLED COPY VALID
 ONLY WHEN RED

EMERGENCY PLAN PROCEDURES INDEX

PEACH BOTTOM UNITS 2 AND 3

EP Index
Page 2
Rev. 51 *
07/01/85 *

<u>Number</u>	<u>Title</u>	<u>Review Date</u>	<u>Rev. No.</u>	<u>Revision Date</u>
.6	Samples Following Radioactive Liquid Releases After Accident Conditions	05/25/82	0	05/25/82
EP-205A .7	Obtaining the Iodine and Particulate Samples from the Main Stack and Roof Vents Following Accident Conditions	11/21/83	2	11/21/83
EP-205A .8	Obtaining Liquid Radwaste Samples from Radwaste Sample Sink Following Accident Conditions	05/25/82	0	05/25/82
EP-205A .9	Obtaining Samples from Condensate Sample Sink Following Accident Conditions	05/25/82	0	05/25/82
EP-205A .10	Obtaining Off-Gas Samples from the Off-Gas Hydrogen Analyzer Following Accident Conditions	05/25/82	0	05/25/82
EP-205A .11	Sample Preparation and Handling of Highly Radioactive Liquid Samples	02/29/84	2	02/29/84
EP-205A .12	Sample Preparation and Handling of Highly Radioactive Particulate Filters and Iodine Cartridges	01/10/84	3	01/10/84
EP-205A .13	Sample Preparation and Handling of Highly Radioactive Gas Samples	02/29/84	2	02/29/84
EP-205A .14	Offsite Analysis of High Activity Samples	11/23/83	0	11/23/83
EP-205A .15	Guidelines for the Order of Analysis on Post-Accident Samples	02/29/84	0	02/29/84
EP-205B	Radiation Survey Groups	09/18/84	5	09/18/84
EP-205C	Personnel Dosimetry Bioassay and Respiratory Protection Group	09/20/84	3	09/20/84
EP-206	D E L E T E D	04/27/83		
EP-206A	Fire Fighting Group	01/10/84	6	01/10/84
EP-206B	Damage Repair Group	05/31/83	3	05/31/83
EP-207	Personnel Safety Team Activation	09/20/84	6	09/20/84
EP-207A	Search and Rescue	04/13/83	3	04/13/83

EMERGENCY PLAN PROCEDURES INDEX

PEACH BOTTOM UNITS 2 AND 3

EP Index
Page 3
Rev. 51 *
07/01/85 *

<u>Number</u>	<u>Title</u>	<u>Review Date</u>	<u>Rev. No.</u>	<u>Revision Date</u>
EP-207B	D E L E T E D	04/27/84		
EP-207C	D E L E T E D	06/26/85		*
EP-207D	Evacuation Assembly Group	04/25/83	3	04/25/83
EP-207E	Vehicle and Evacuee Control Procedure	08/01/83	2	08/01/83
EP-207F	Vehicle Decontamination Procedure	05/31/83	1	05/31/83
EP-208	Security Team	05/31/83	1	05/31/83
EP-209	Telephone List For Emergency Use	05/20/85	10	06/11/85 *
EP-209 Appendix A	Immediate Notification Call List	05/20/85	9	01/11/85
EP-209 Appendix B	D E L E T E D	11/04/81		
EP-209 Appendix C	Peach Bottom Station Supervision	05/20/85	16	06/11/85 *
EP-209 Appendix D-1	On Site Emergency Team Leaders	05/20/85	12	06/12/85 *
EP-209 Appendix D-2	Dose Assessment Team	05/20/85	16	05/02/85
EP-209 Appendix D-3	Fire and Damage Team	05/20/85	14	06/12/85 *
EP-209 Appendix D-4	Personnel Safety Team	05/20/85	17	06/12/85 *
EP-209 Appendix D-5	Security Team	05/20/85	12	06/12/85 *
EP-209 Appendix D-6	Re-Entry and Recovery Team	05/20/85	4	01/11/85
EP-209 Appendix D-7	Technical Support Center Group	05/20/85	16	06/12/85 *
EP-209 Appendix D-8	Chemistry Sampling & Analysis Team	05/20/85	2	06/12/85 *
EP-209 Appendix E	Corporate Emergency Team Leaders and Support Personnel	05/20/85	13	06/12/85 *

EMERGENCY PLAN PROCEDURES INDEX

PEACH BOTTOM UNITS 2 AND 3

EP Index
Page 4
Rev. 51 *
07/01/85 *

<u>Number</u>	<u>Title</u>	<u>Review Date</u>	<u>Rev. No.</u>	<u>Revision Date</u>
EP-209 Appendix F	U. S. Government Agencies	05/20/85	5	06/24/83
EP-209 Appendix G	Emergency Management Agencies	05/20/85	6	06/12/85 *
EP-209 Appendix H	Company Consultants	05/20/85	11	06/12/85 *
EP-209 Appendix I-1	Field Support Personnel	05/20/85	17	06/14/85 *
EP-209 Appendix I-2	Chemistry & Health Physics Contractor Call List	05/20/85	16	06/12/85 *
EP-209 Appendix J	Nearby Public and Industrial Users Of Downstream Waters	05/20/85	7	05/03/85
EP-209 Appendix K	Miscellaneous	05/20/85	6	06/24/83
EP-209 Appendix L	Local PECO Phones	05/20/85	6	01/11/85
EP-209 Appendix M	D E L E T E D	10/21/84		
EP-209 Appendix N	Medical Support Groups	05/20/85	9	06/14/85 *
EP-209 Appendix P	Staffing Augmentation - 60 Minute Call Procedure	05/20/85	12	06/12/85 *
EP-210	Dose Assessment Team	09/18/84	1	09/18/84
EP-211	Emergency Radiation Exposure Guidelines and Controls	06/28/85	0	06/28/85 *
EP-301	Operating the Evacuation Alarm and Pond Page System	12/23/82	1	12/23/82
EP-303	Partial Plant Evacuation	06/20/83	2	06/20/83
EP-304	D E L E T E D	12/04/81		
EP-305	Site Evacuation	06/21/83	5	06/21/83
EP-306	Evacuation of the Information Center	05/25/82	2	05/25/82

EMERGENCY PLAN PROCEDURES INDEX

PEACH BOTTOM UNITS 2 AND 3

EP Index
Page 5
Rev. 51 *
07/01/85 *

<u>Number</u>	<u>Title</u>	<u>Review Date</u>	<u>Rev. No.</u>	<u>Revision Date</u>
EP-307	Reception and Orientation of Support Personnel	09/18/84	1	09/18/84
EP-311	Contaminated Injury	06/28/85	4	06/28/85 *
EP-312	Radioactive Liquid Release (Emergency Director Functions)	09/20/84	2	09/20/84
EP-313	Control of Thyroid Blocking (KI) Tablets	09/20/84	1	09/20/84
EP-315	Corporate Computer Dose Calculations	10/12/84	0	10/12/84
EP-316	Cumulative Population Dose Calculations for Airbourne Releases Manual Method	10/12/84	6	10/12/84
EP-316 Appendix A	Worksheets/Meterological Calculations	11/08/84	7	11/08/84
EP-316 Appendix B	Activity After Reactor Shutdown	10/12/84	6	10/12/84
EP-316 Appendix C	Index of X/Q Outputs for Off-gas Stack Releases	10/12/84	6	10/12/84
EP-316 Appendix D	Relative Dispersion Values for Emergency Dose Calculation Procedure	10/12/84	6	10/12/84
EP-316 Appendix E	Percent Isotopic Abundance vs. Decay Time Since the Reactor Shutdown	10/12/84	6	10/12/84
EP-316 Appendix F	Population Distribution by Compass Sector - Summer Day	10/12/84	6	10/12/84
EP-316 Appendix G	I-131/I-133 Percent Abundance vs. Time Since Reactor Shutdown	10/12/84	6	10/12/84
EP-316 Appendix H	Iodine Source Term from TCS Field Data	10/12/84	6	10/12/84
P-316A	Reading the Rapid Dose Assessment I Program into the TI-59	10/03/84	1	10/03/84
EP-316B	Calculating Rapid Dose Assessment on the TI-59	10/03/84	1	10/03/84
EP-316C	Reading the Refine Dose Assessment I Program onto the TI-59	10/15/84	0	10/15/84

EMERGENCY PLAN PROCEDURES INDEX

PEACH BOTTOM UNITS 2 AND 3

EP Index
Page 6
Rev. 51 *
07/01/85 *

<u>Number</u>	<u>Title</u>	<u>Review Date</u>	<u>Rev. No.</u>	<u>Revision Date</u>
EP-317	Direct Recommendations to County Emergency Management and Civil Defense Agencies	10/12/84	3	10/12/84
EP-318	Liquid Release Dose Calculation Method for Intake Water at Downstream Facilities	04/13/83	1	04/13/83
EP-319	Liquid Release Dose Calculation Method for Fish	04/13/83	1	04/13/83
EP-320	Procedure for Leaking Chlorine	03/12/82	1	03/12/82
EP-325	Use of the Containment Radiation Monitor to Estimate Release Source Term	06/09/82	0	06/09/82
EP-401	Entry for Emergency Repair and Operations	09/15/84	5	09/15/84
EP-500	Review and Revision of Emergency Plan (FSAR Appendix 0)	04/01/81	0	04/01/81